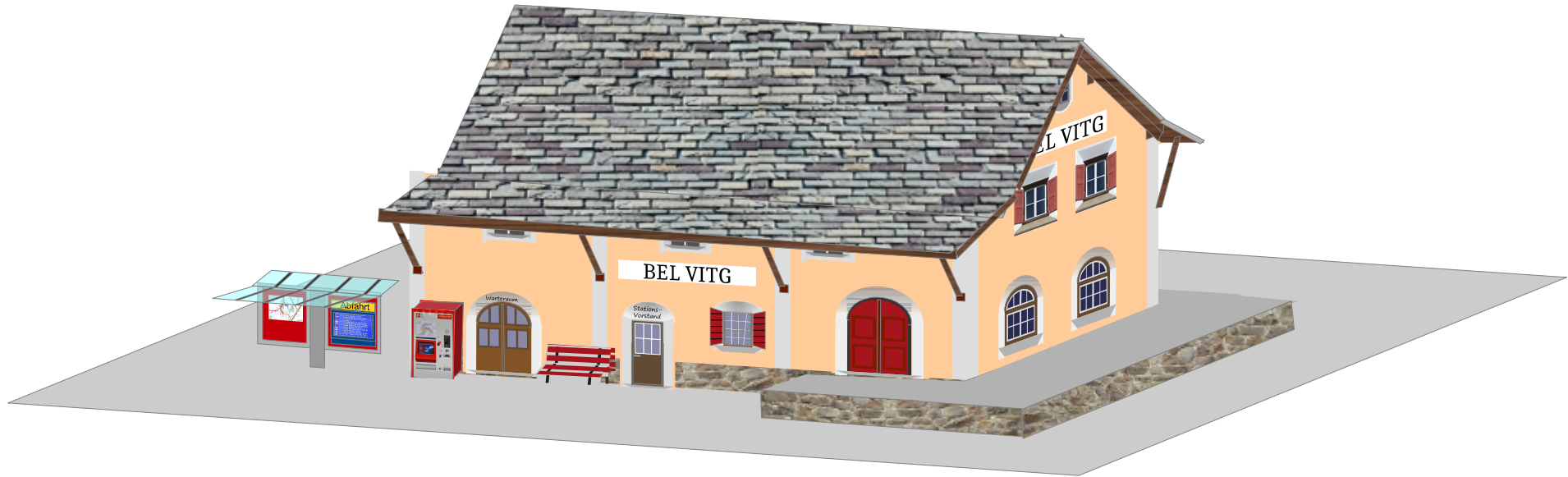


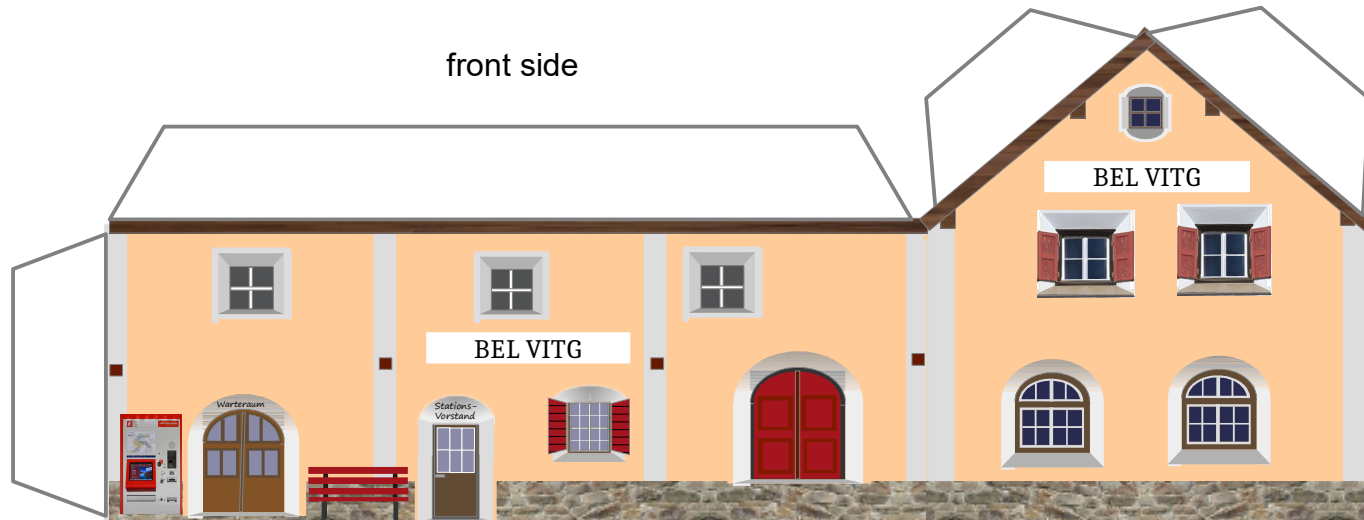
## Typical train station of Rhaetian Railway's "Engadin Line"



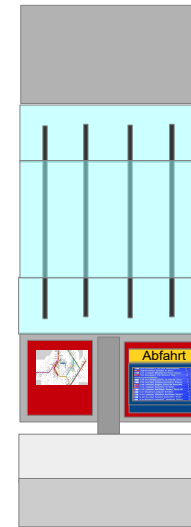
On the line from Bever to Scuol of the Rhaetian Railway there are 8 stations that look practically identical. They are built in typical "Engadine style" and fit wonderfully into the mountain environment. This model has a fictional name and represents these stations.

# Typical train station of Rhaetian Railway's "Engadin Line"

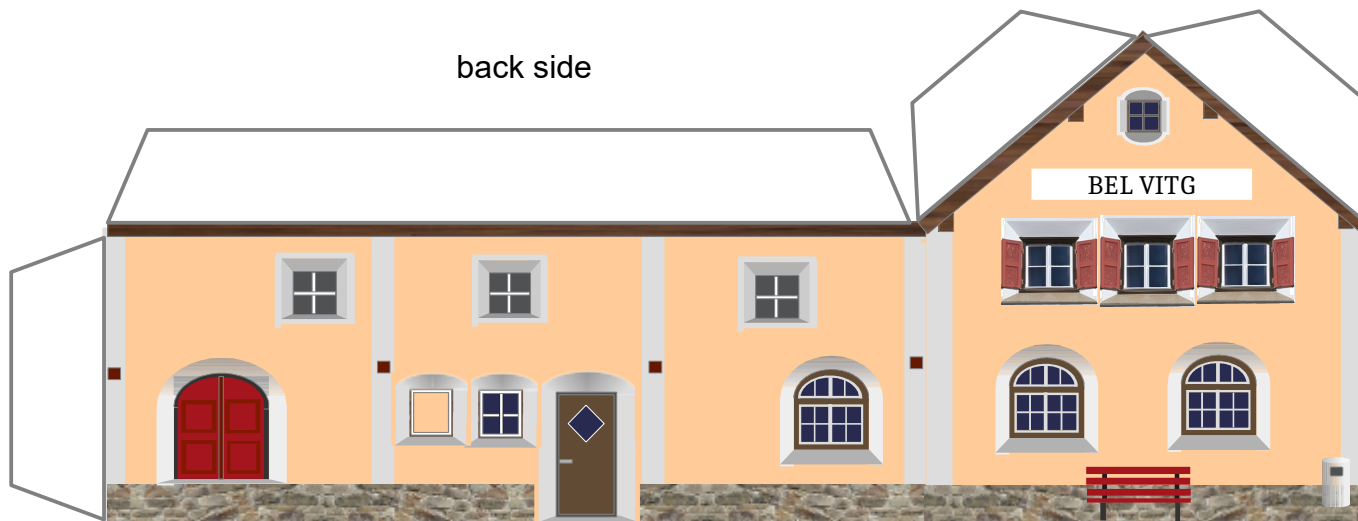
front side



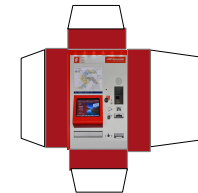
Information board



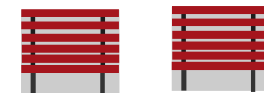
back side



ticket vendor machine



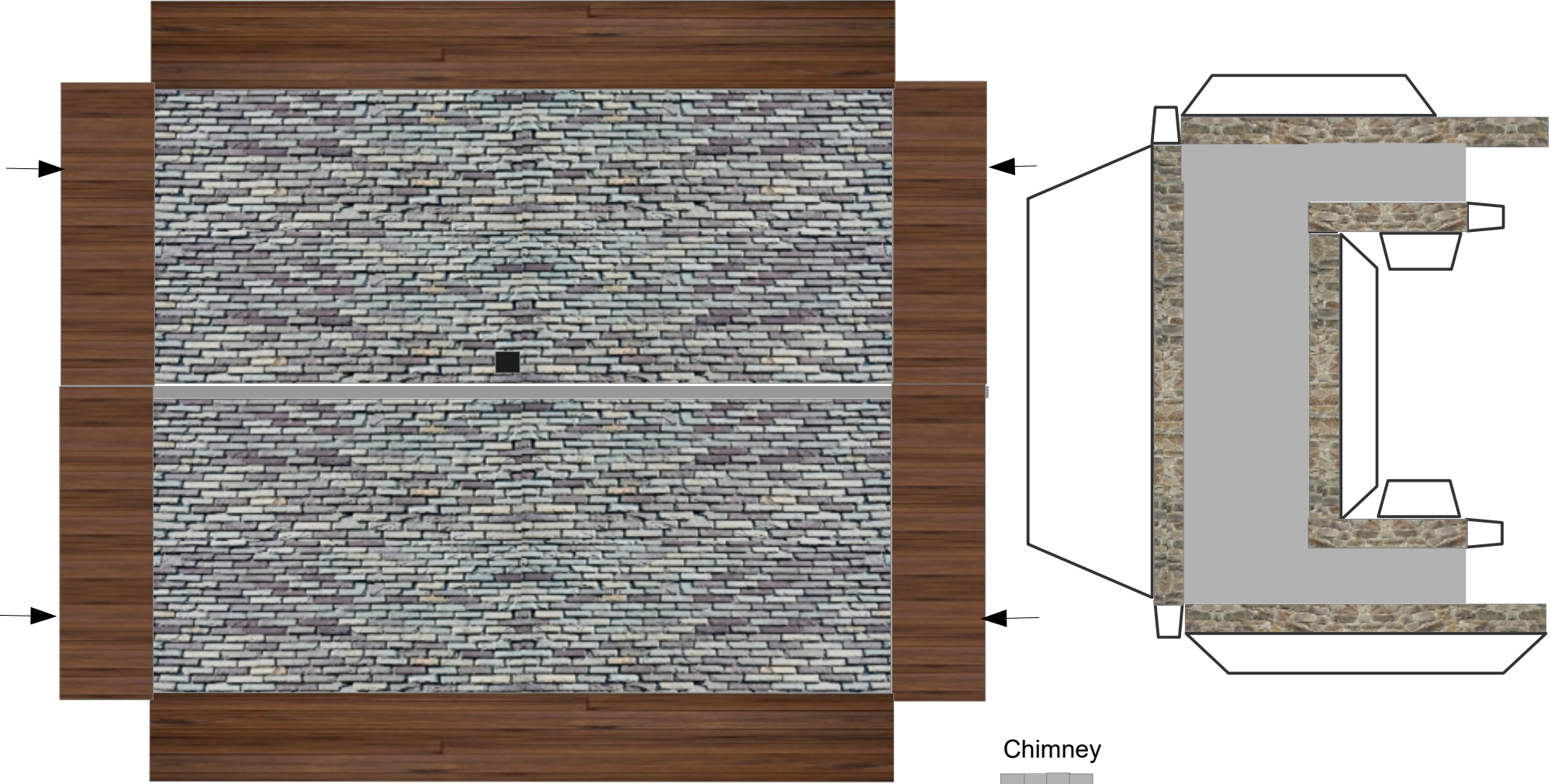
benches



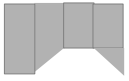
# Typical train station of Rhaetian Railway's "Engadin Line"

roof

ramp



Chimney



# Assembly info Typical train station of Rhaetian Railway's "Engadin Line"

