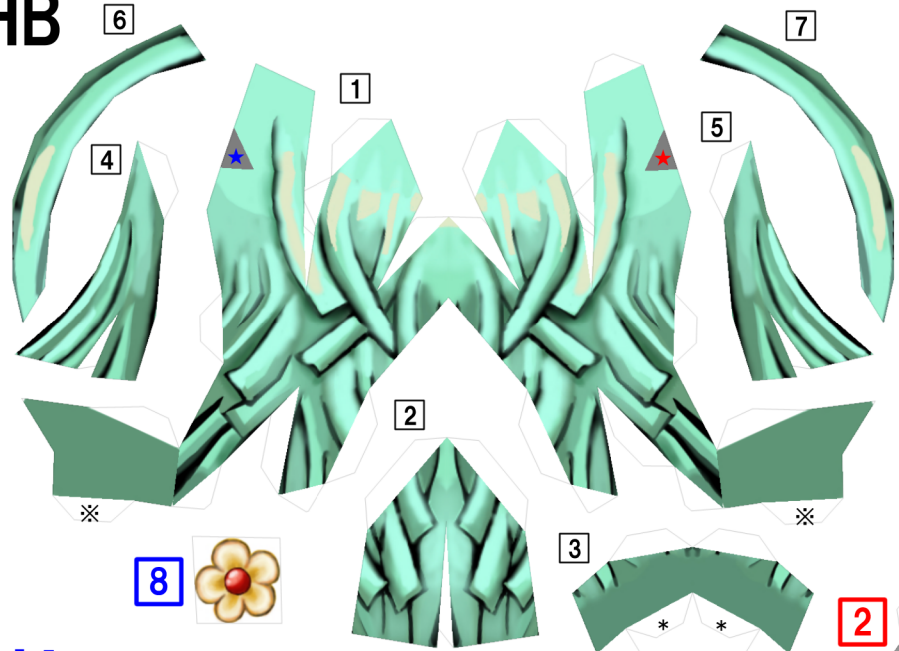
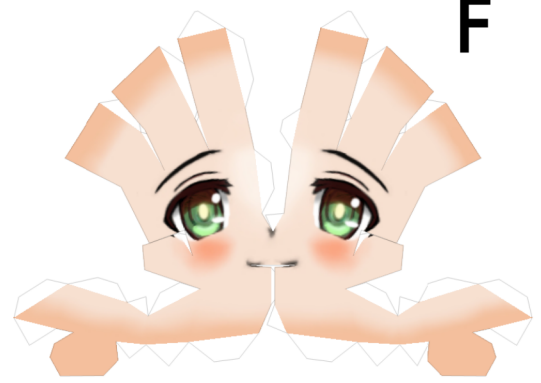


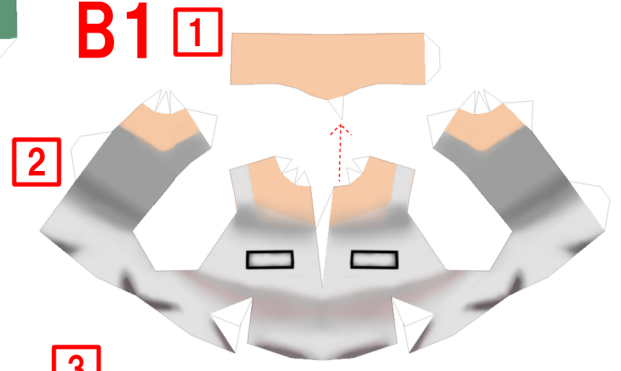
HB



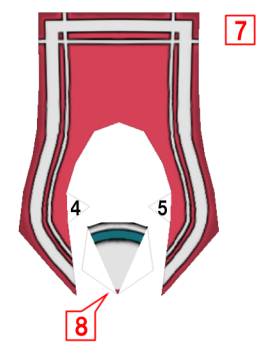
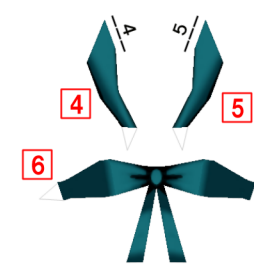
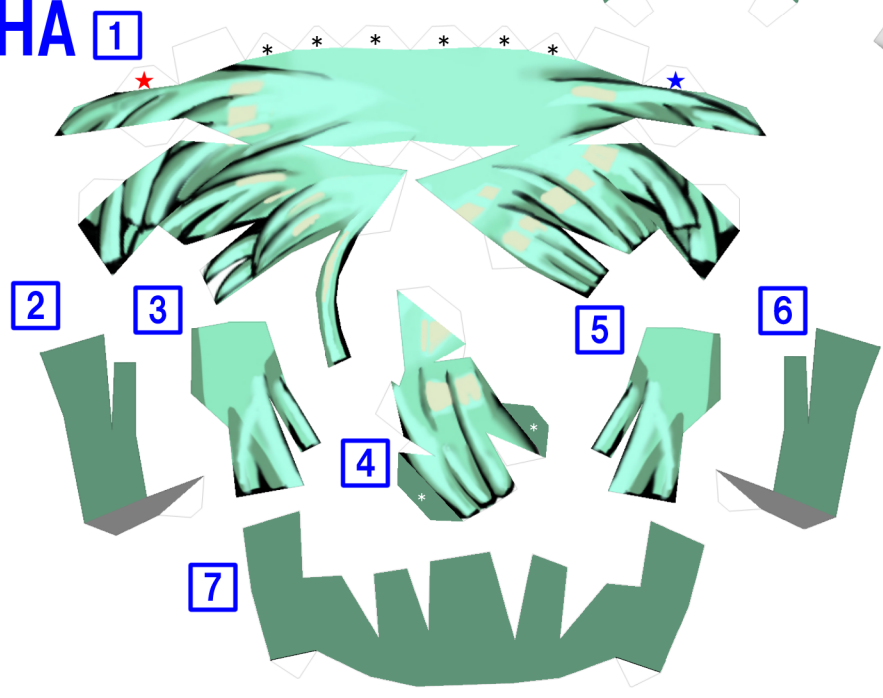
F



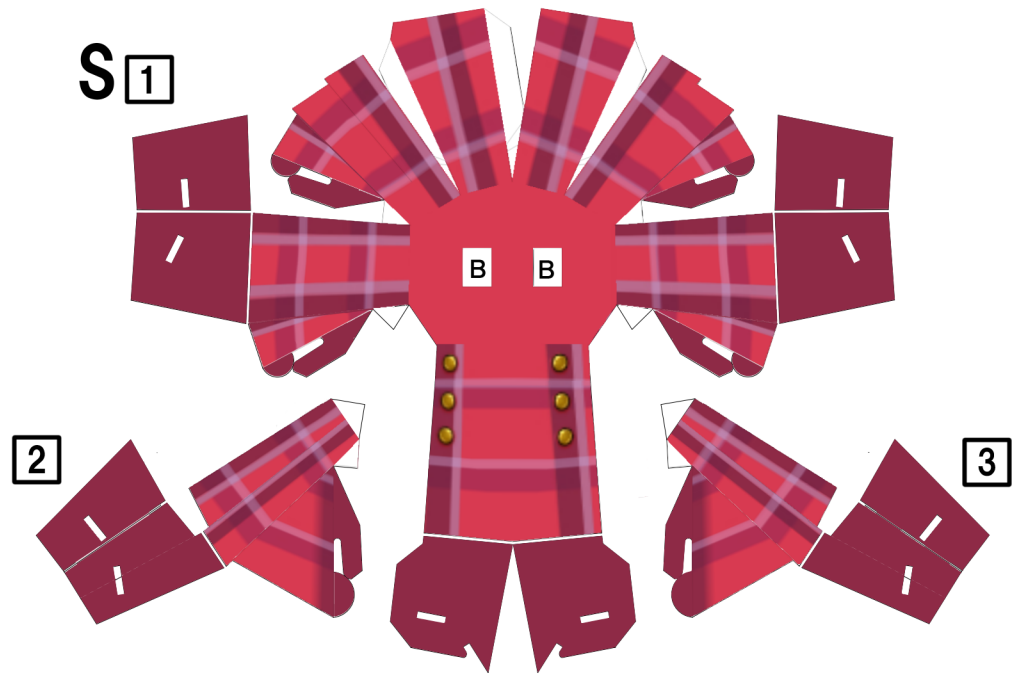
B1



HA



S



1



HAND

HAND

A2

P1

P1

A2

1

1

1

1

2

2

A3

A1

2

2

A1

A3

A4

A4

P2

P2

R1

R1

R2

R2

R3

R3

R5

R5

1

2

2

1

R4

R4

R

L

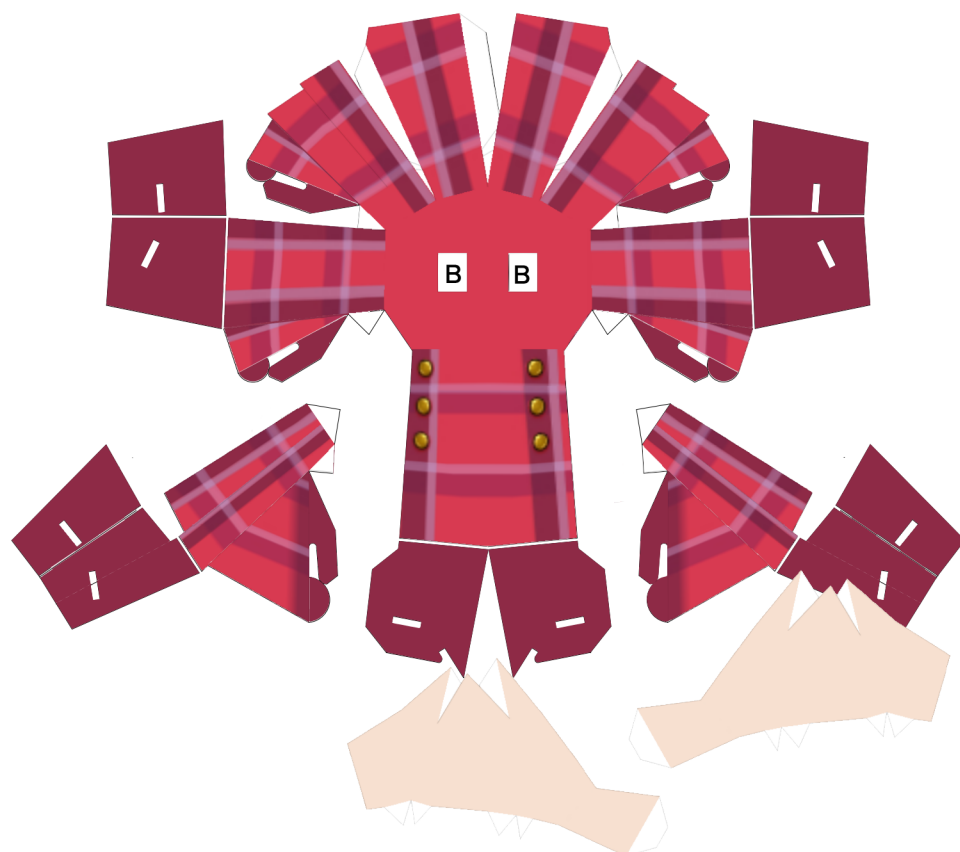
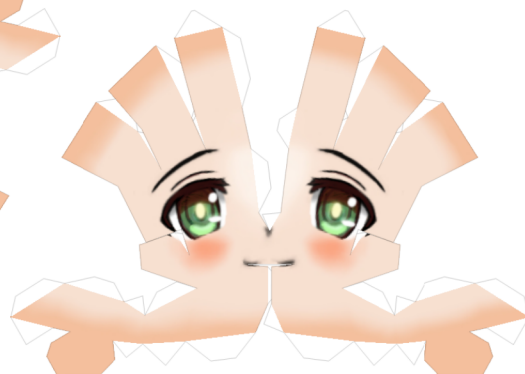
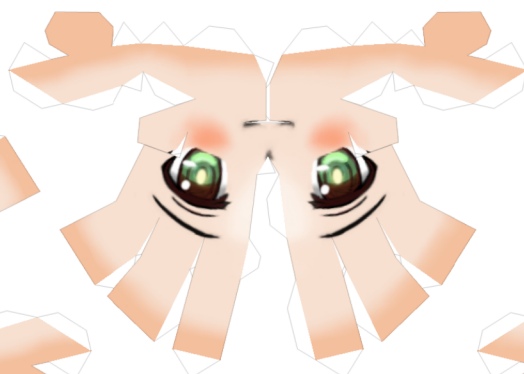
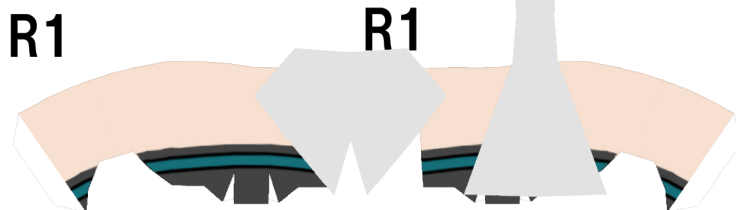
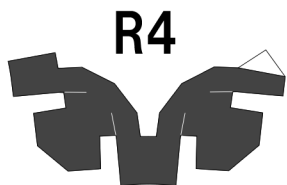
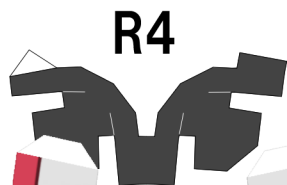
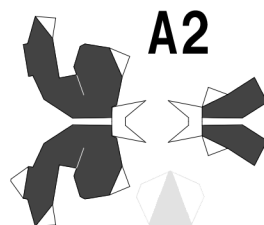
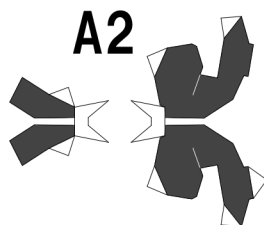
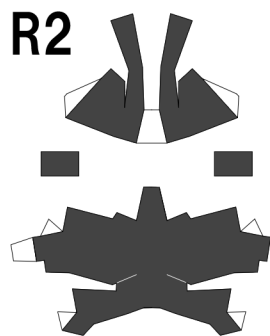
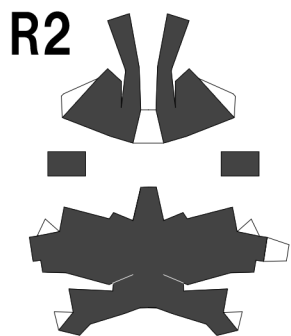
2

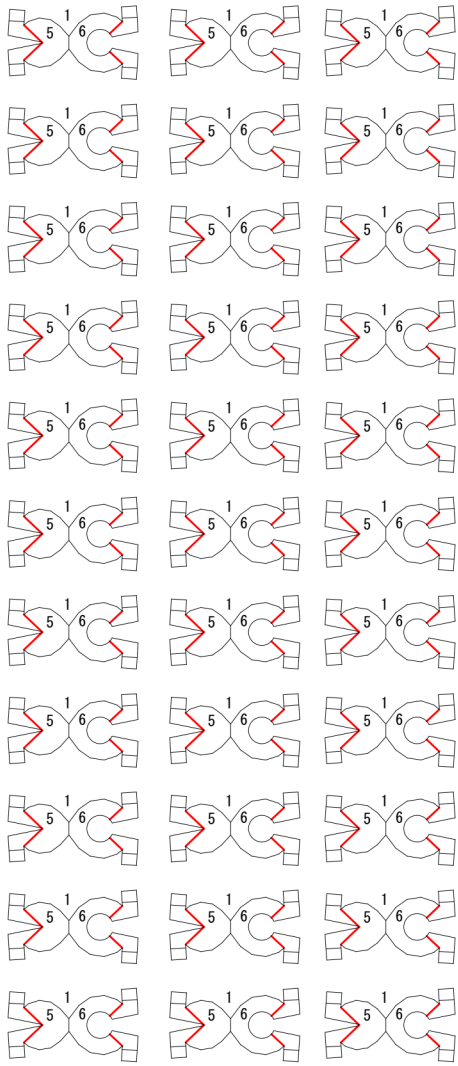
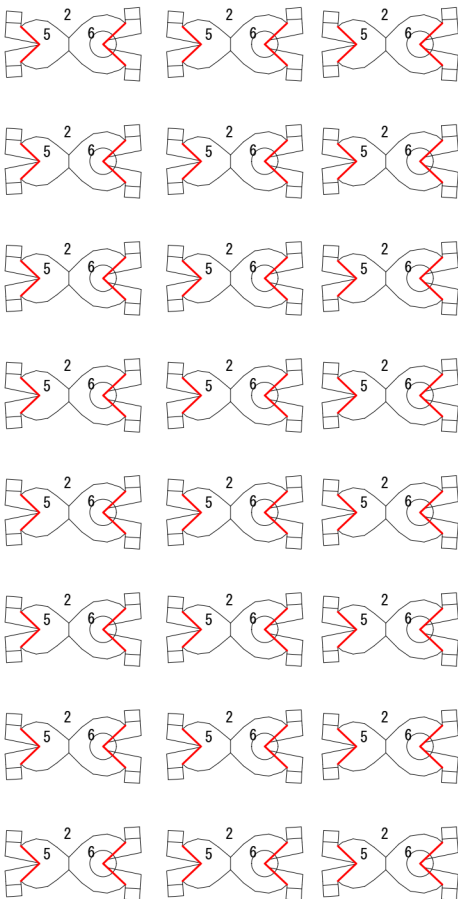
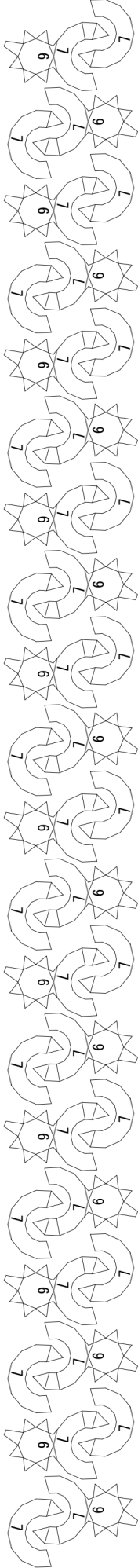
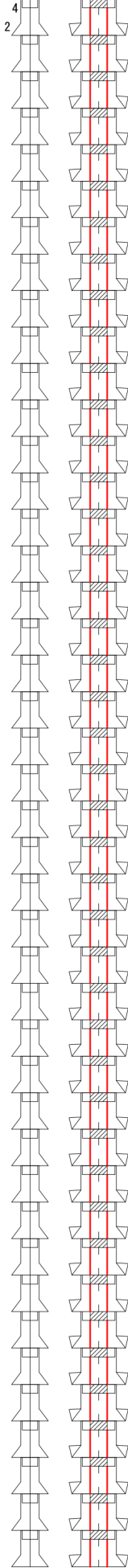
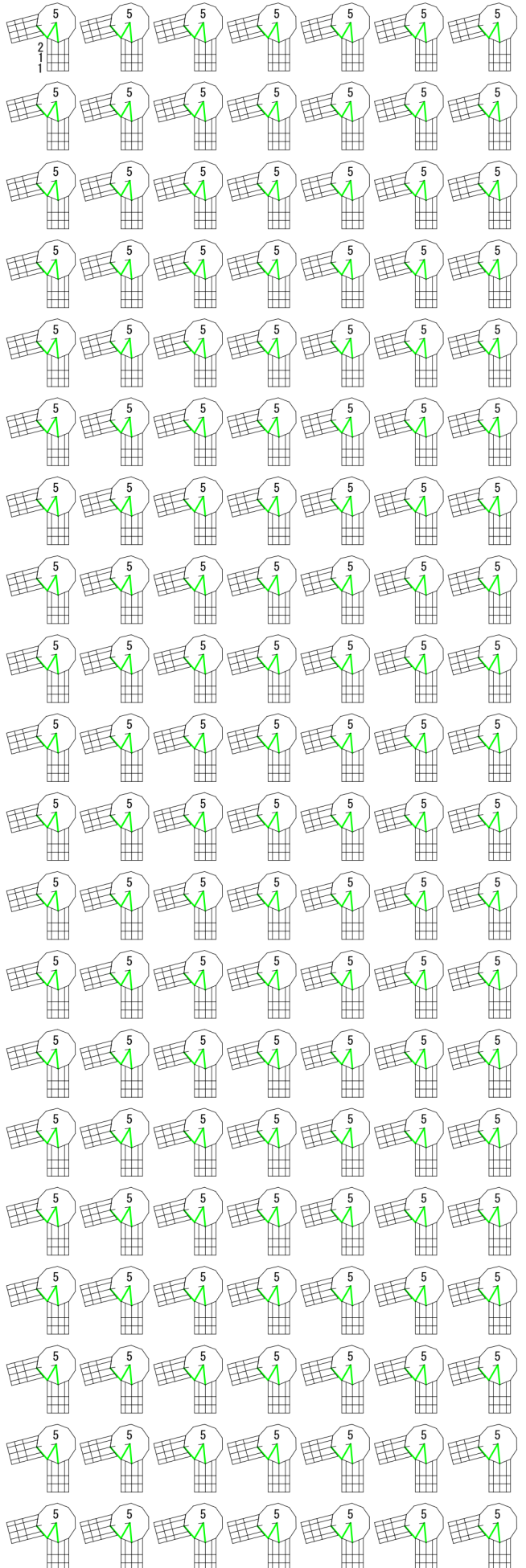
B2

1

2

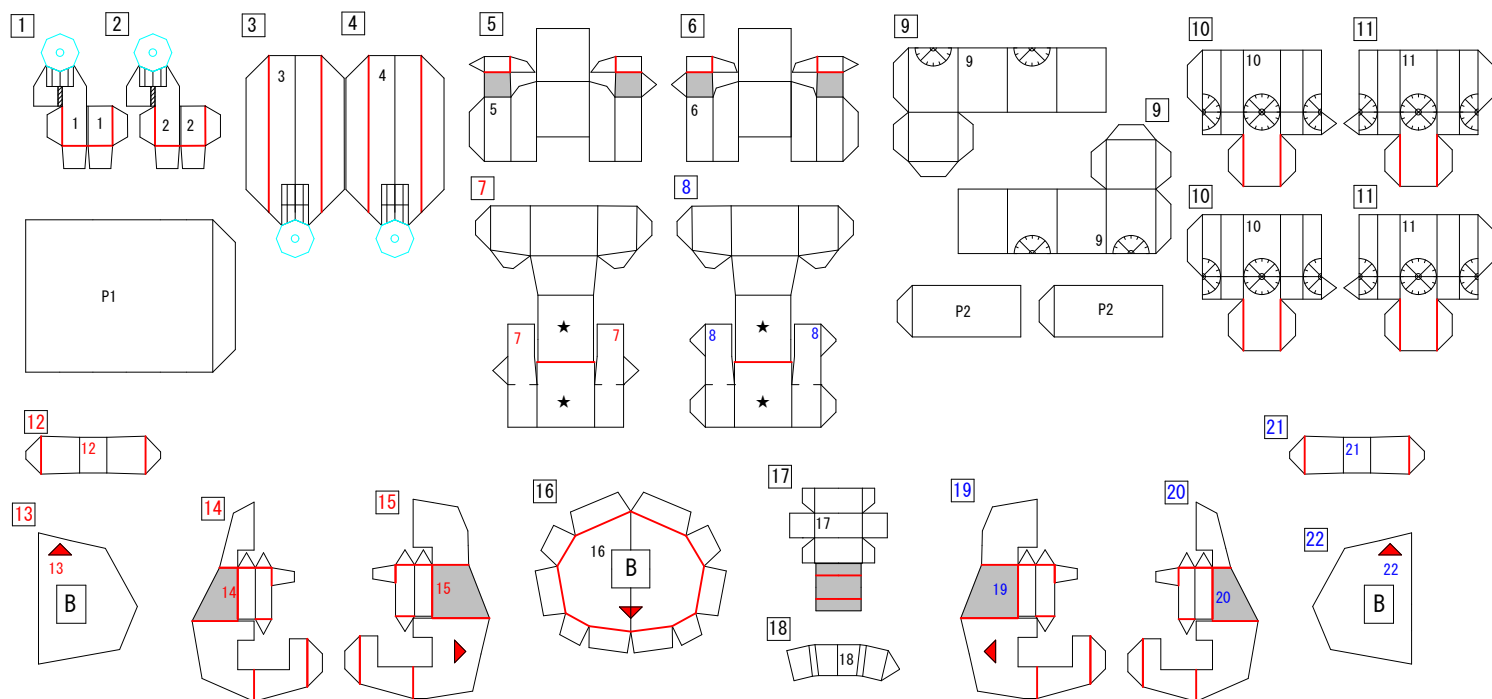




JB₅₁₆JB₅₂₆JD₆₇JC₂₁₄JA₅₁₂

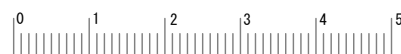
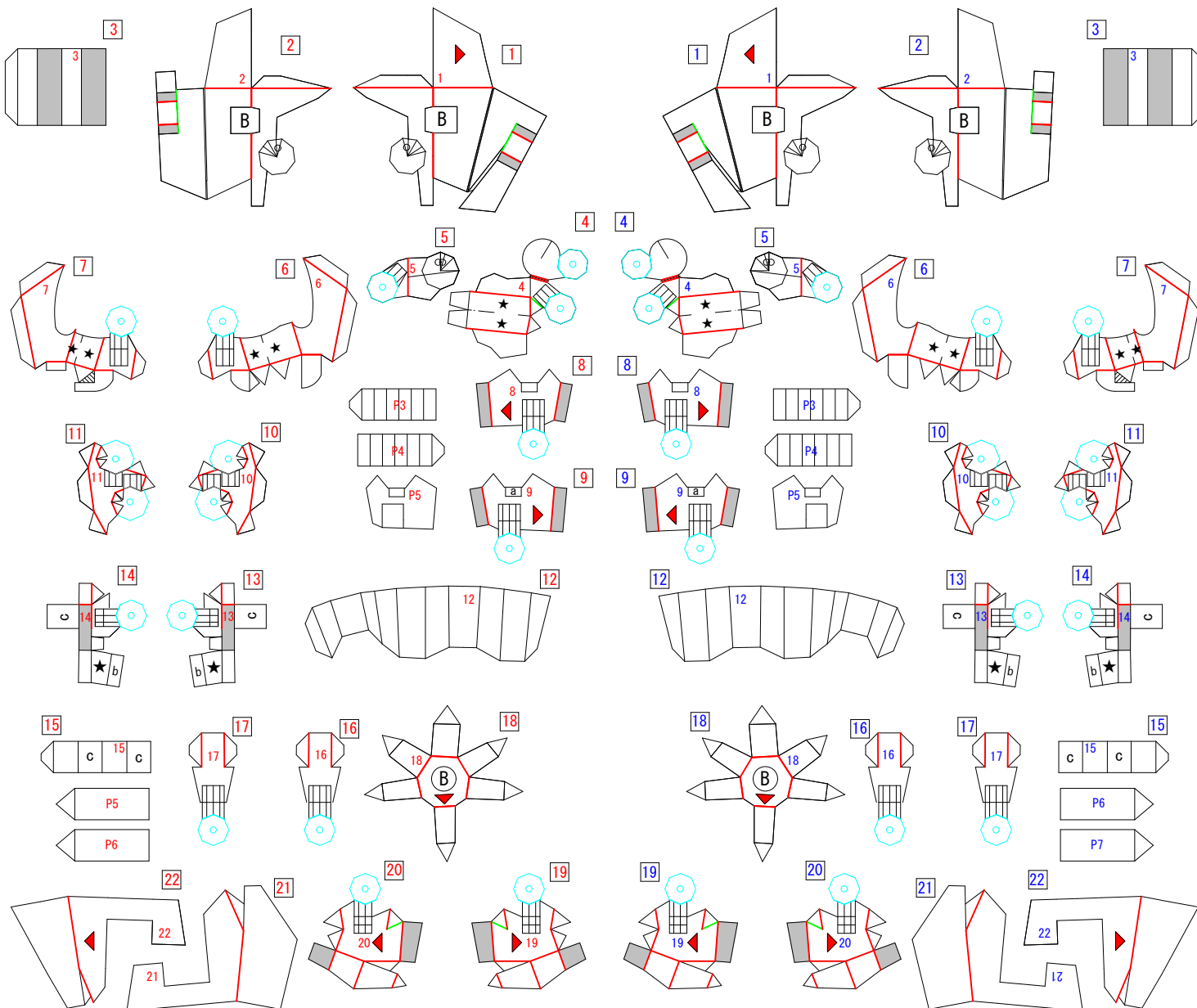
IA - BODY PARTS

BONE V7. 1 Kako Natume



IB - REG PARTS - R

IB - REG PARTS - L

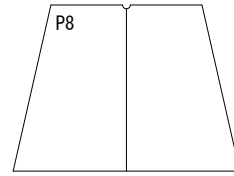
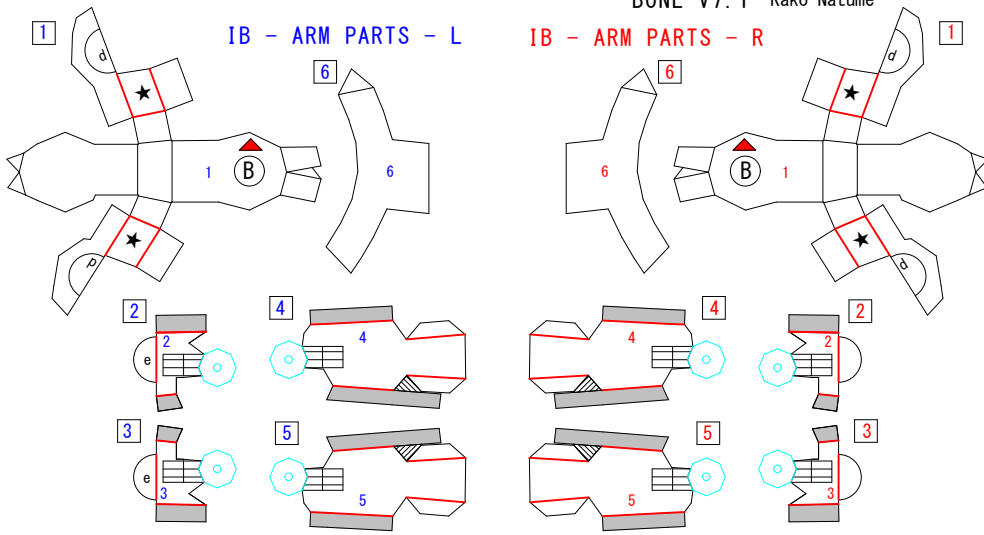


— 谷折りvalley fold

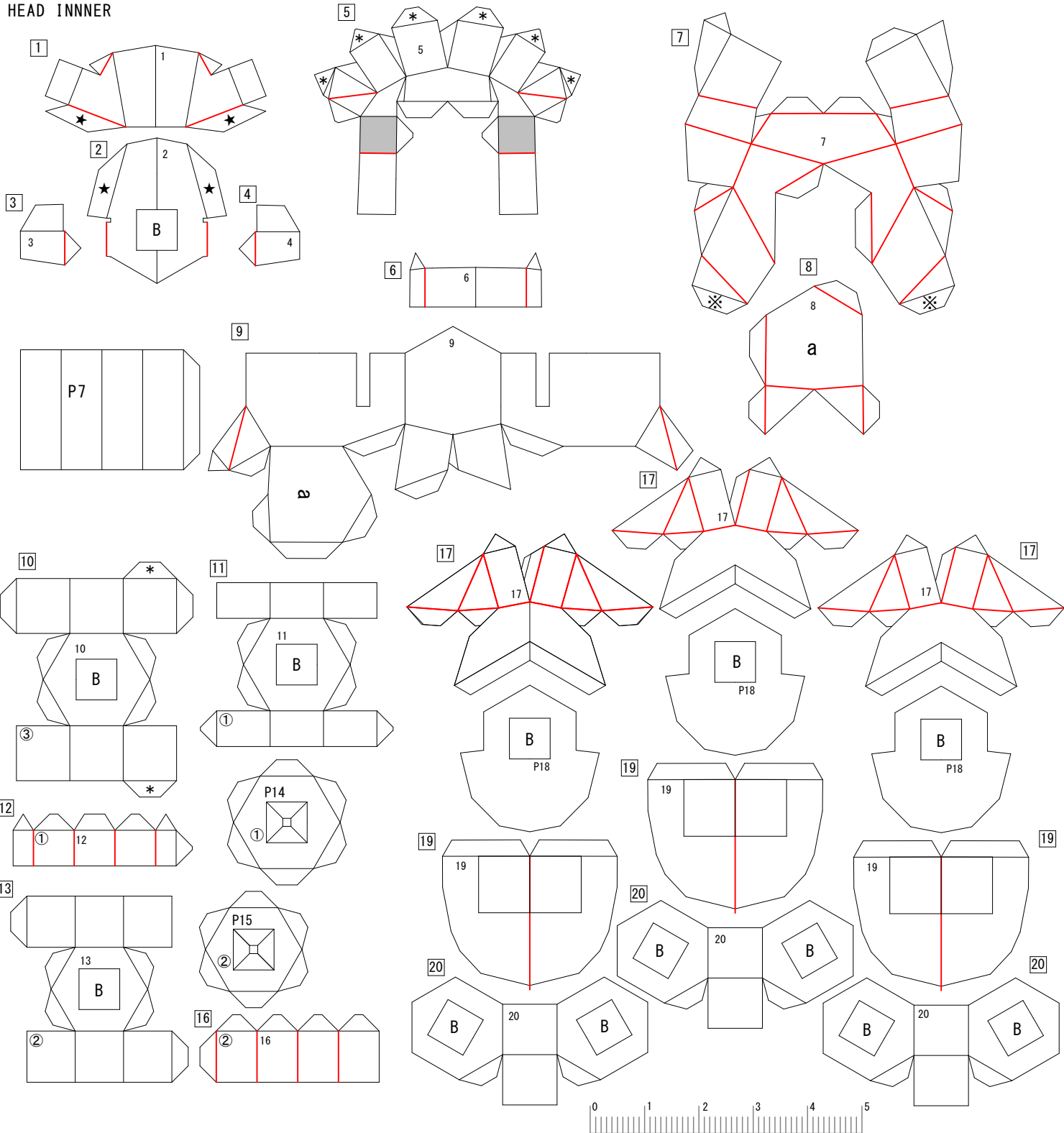
— 切り込みを入れる
Insert a notch▨ & B 斜線部は切り抜く
Cut out hatching part

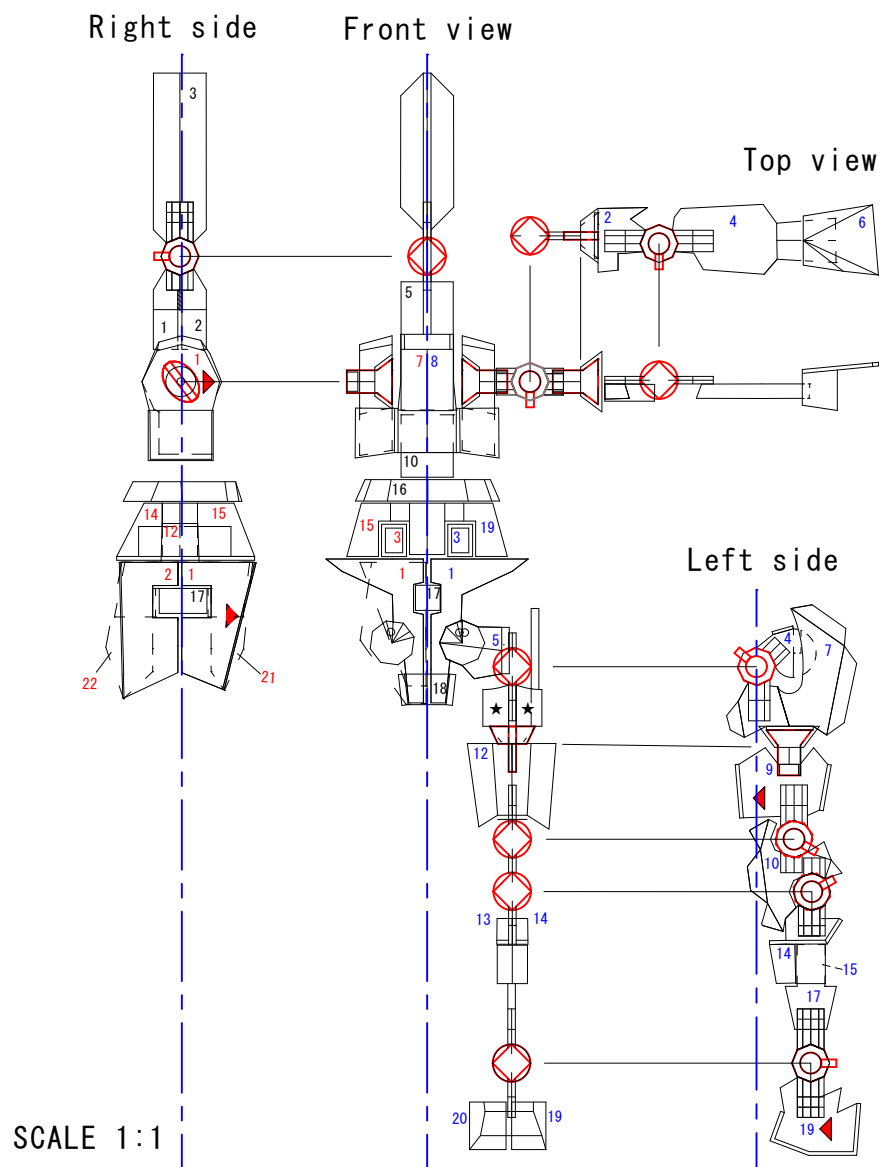
IB - ARM PARTS - L

IB - ARM PARTS - R



IC - HEAD INNER





Body Bone V7.1s

©2018 @kujiracraft

