



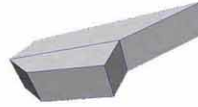
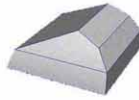
THUNDERCHILD PAPERMECHS

SDF - 1 (HD)

Constructions Instructions

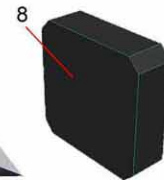
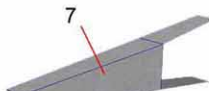
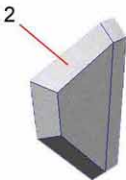
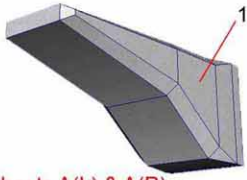
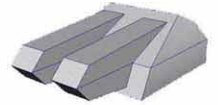
1

Main Gun & Chest
NB!!! - This page instructs Left AND Right

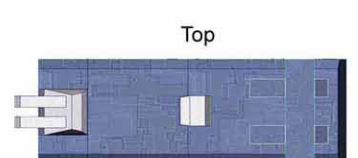
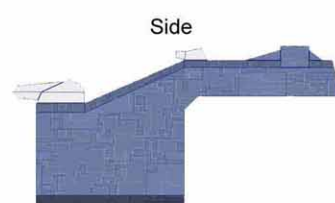
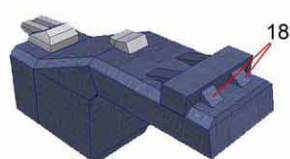
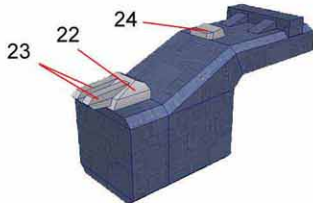
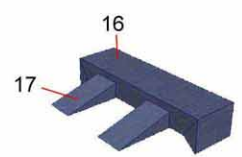
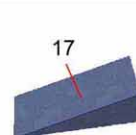
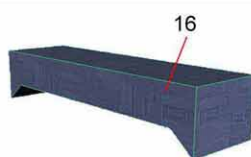
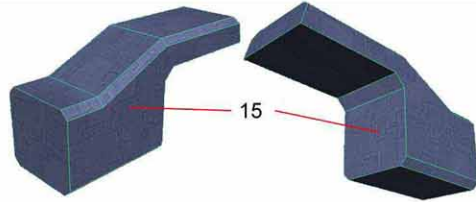
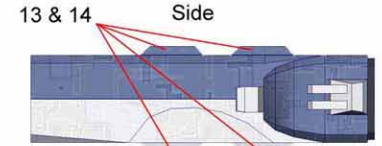
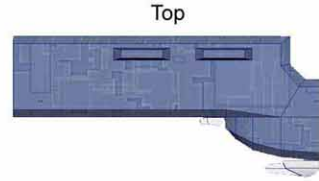
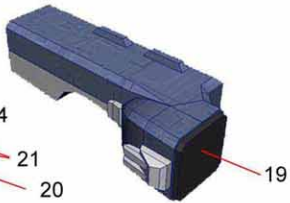
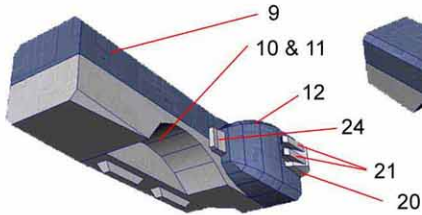
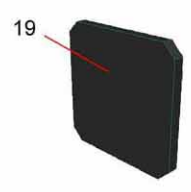
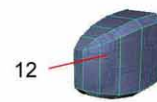
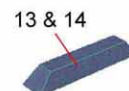
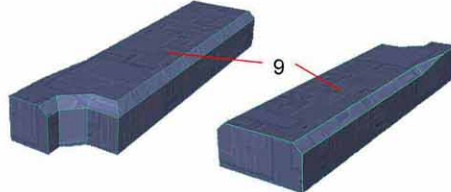
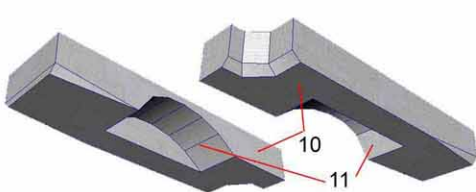
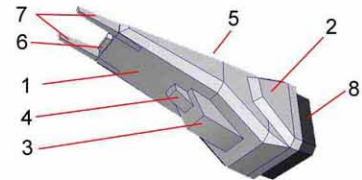


!!!Please Note: These parts will be repeated throughout the entire model!!!

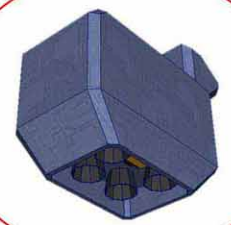
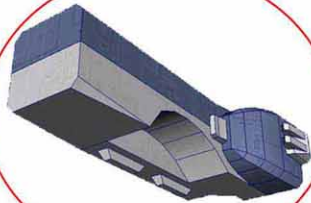
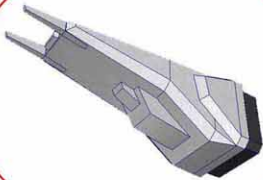
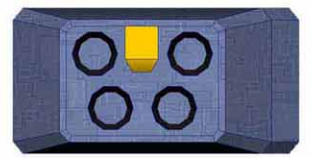
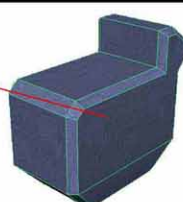
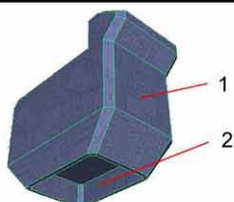
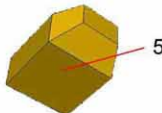
(REFERENCE)



Sheets A(L) & A(R)



Sheets B(L) & B(R)



PARTS FINALIZED:



THUNDERCHILD PAPERMECHS

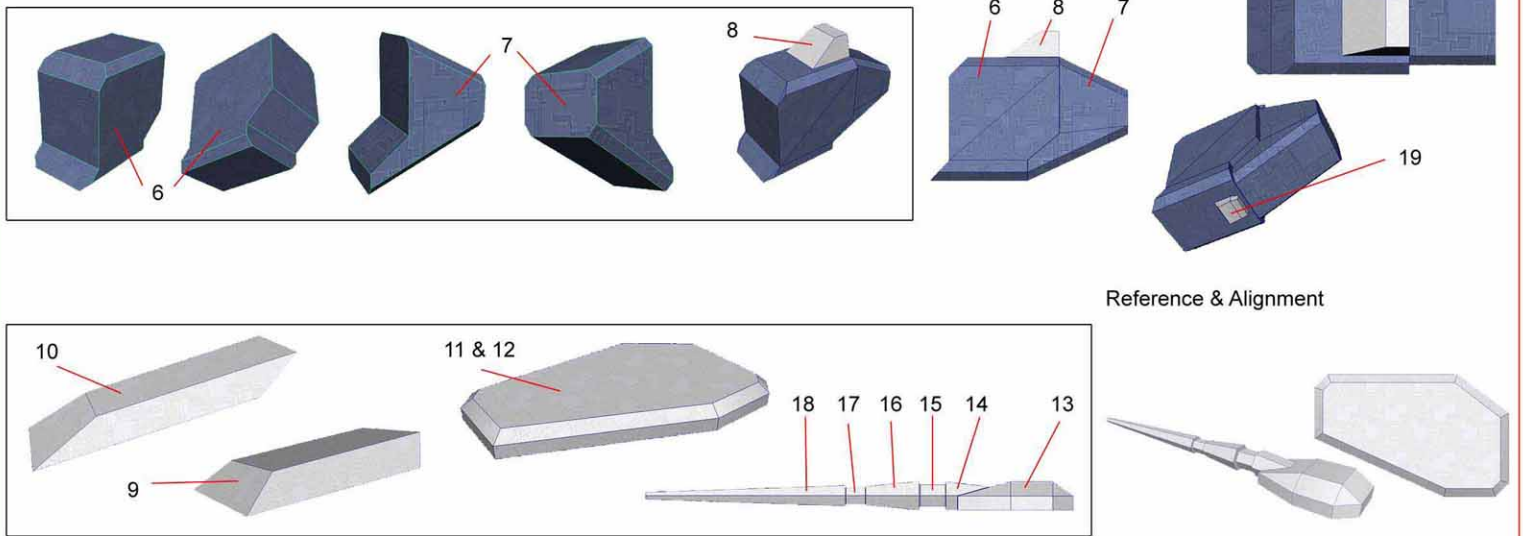
SDF - 1 (HD)

Constructions Instructions

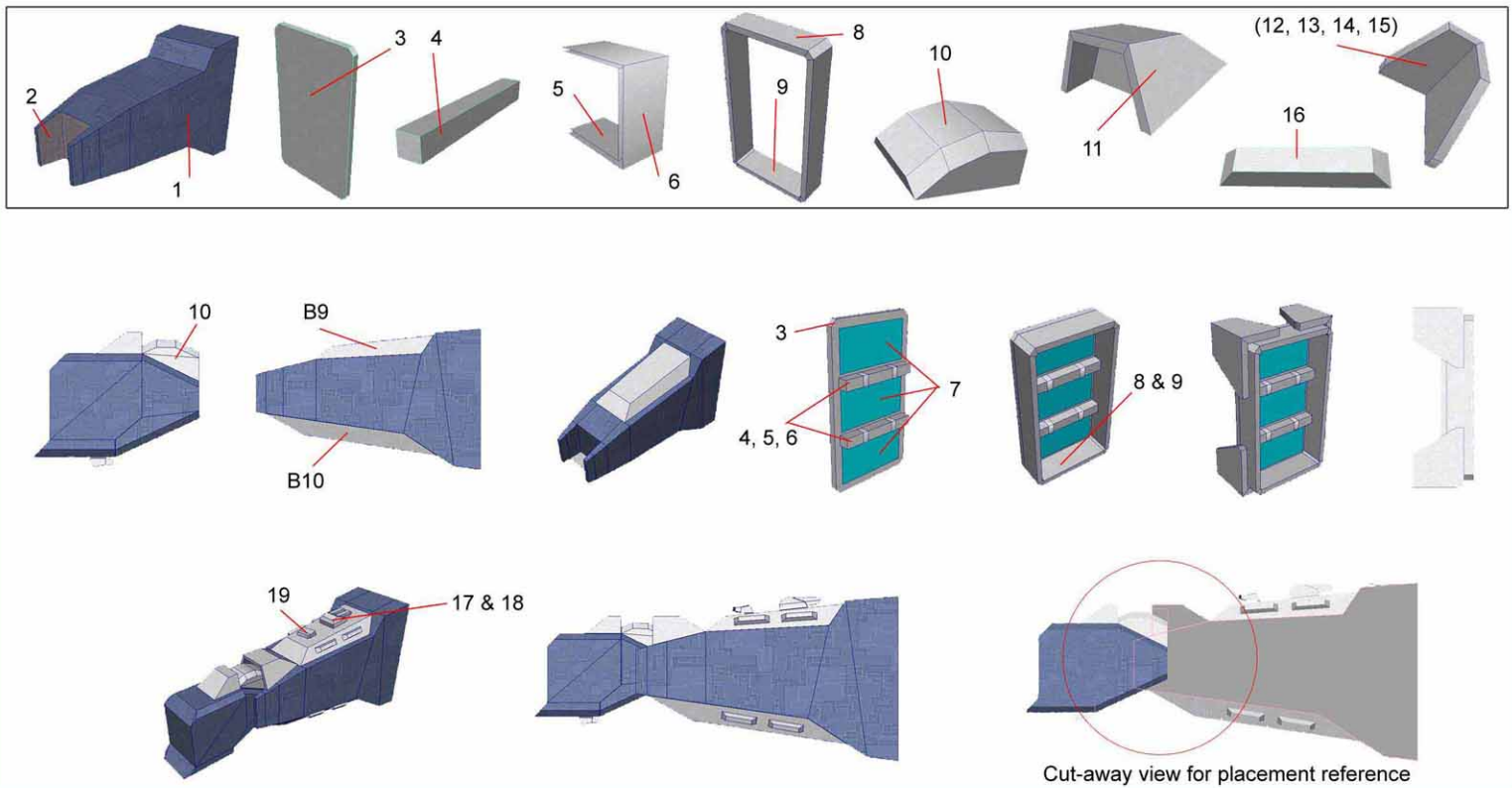
2

Legs & Shoulder Covers
NB!!! - This page instructs Left AND Right

Sheets B(L) & B(R)



Sheets C(L) & C(R)



PARTS FINALIZED:



THUNDERCHILD PAPERMECHS

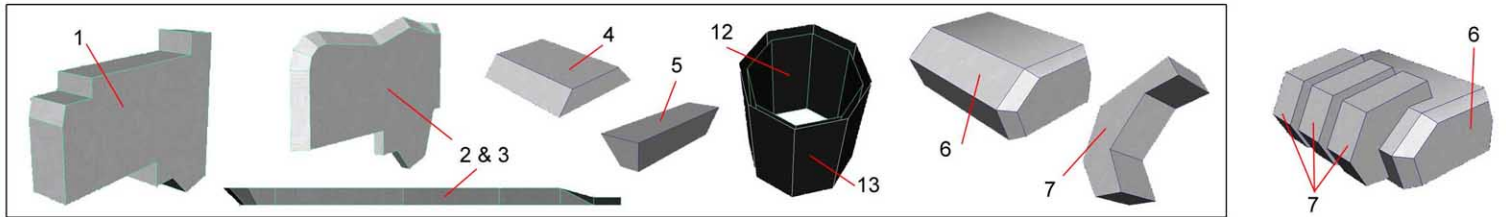
SDF - 1 (HD)

Constructions Instructions

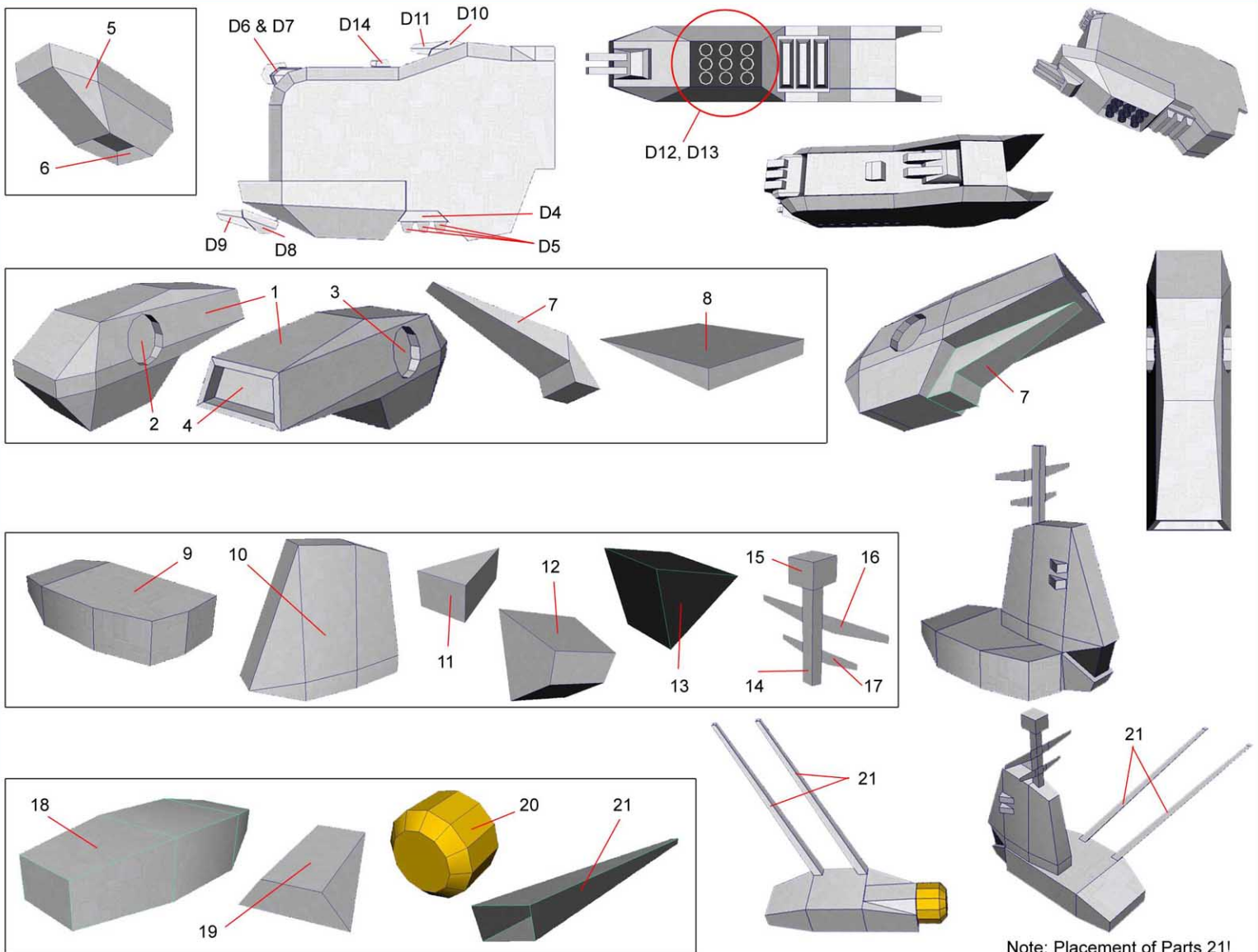
3

Centre Structure

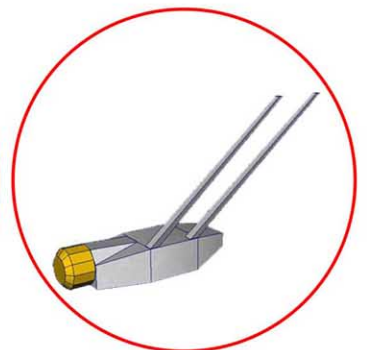
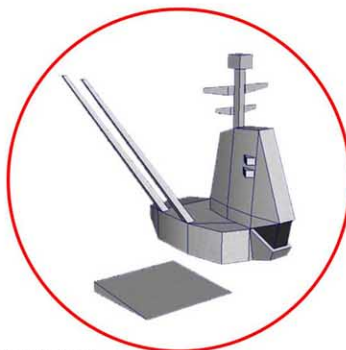
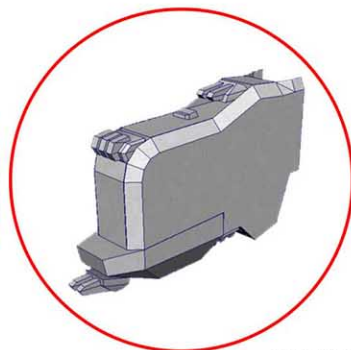
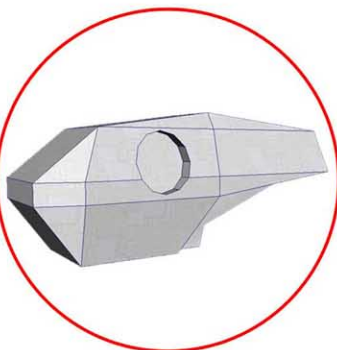
Sheet D



Sheet E



PARTS FINALIZED:





THUNDERCHILD PAPERMECHS

SDF - 1 (HD)

Constructions Instructions

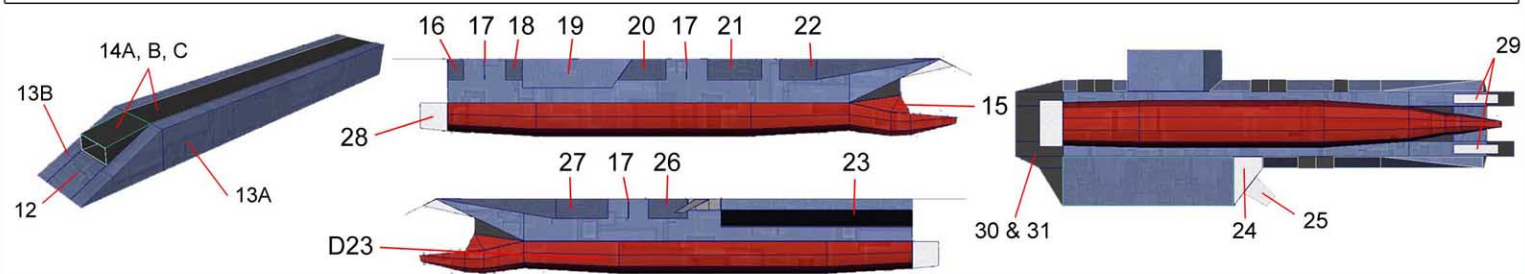
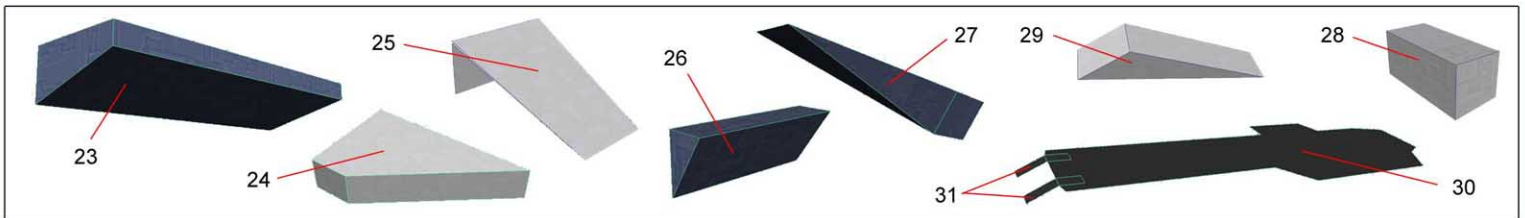
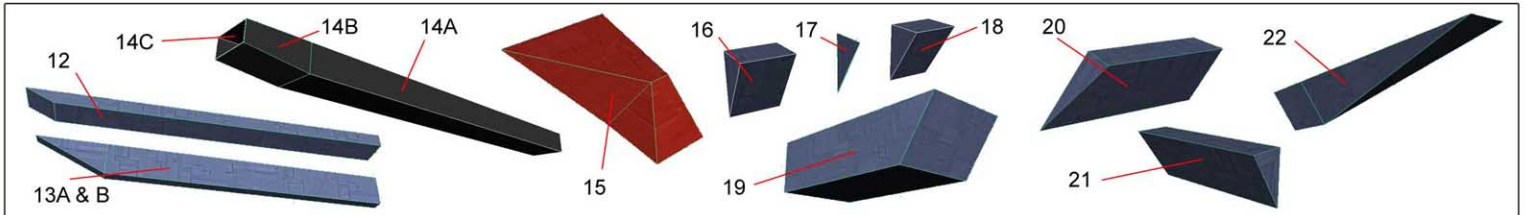
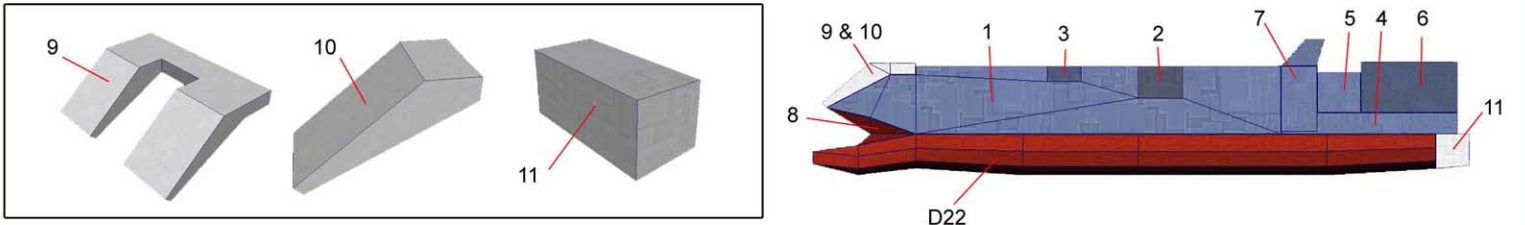
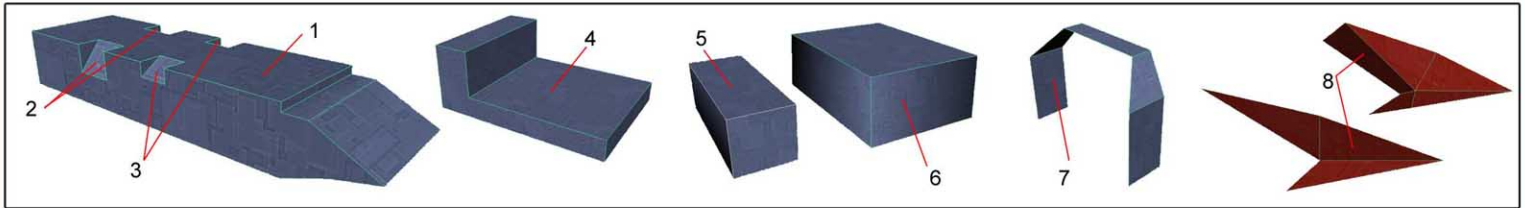
4

Carriers Daedalus & Prometheus

Sheet E



Sheet F



PARTS FINALIZED:



THUNDERCHILD PAPERMECHS

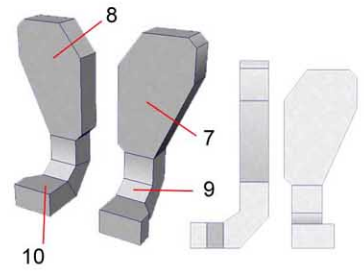
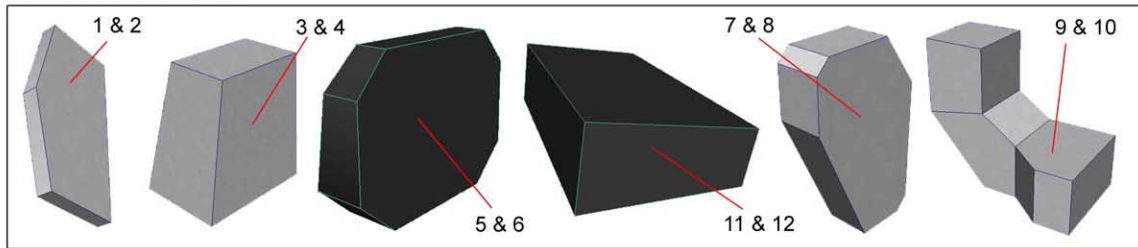
SDF - 1 (HD)

Constructions Instructions

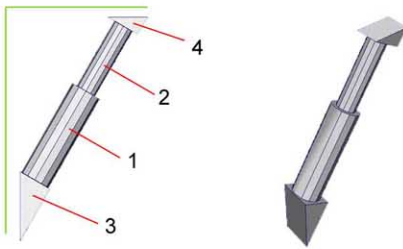
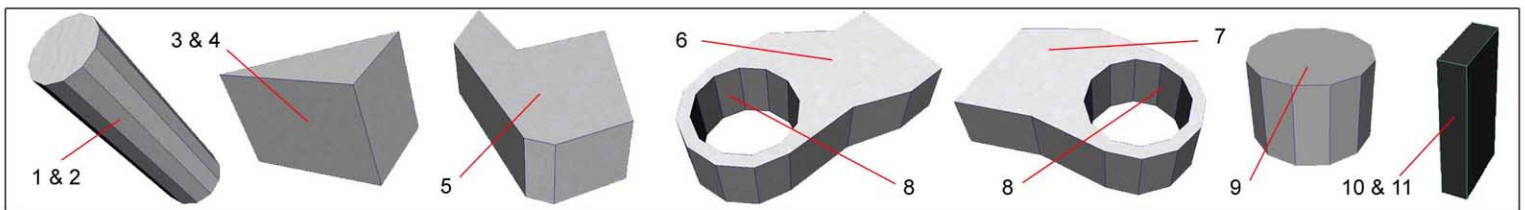
5

NB!!! - Time to choose!!!
Build **Sheet I** for Battle Fortress or **Sheet J** for Cruiser

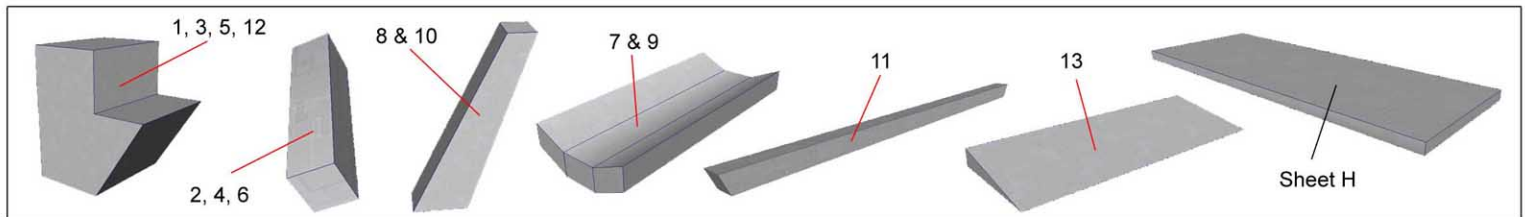
Sheet I (Battlefortress)



Sheet J (Cruiser)

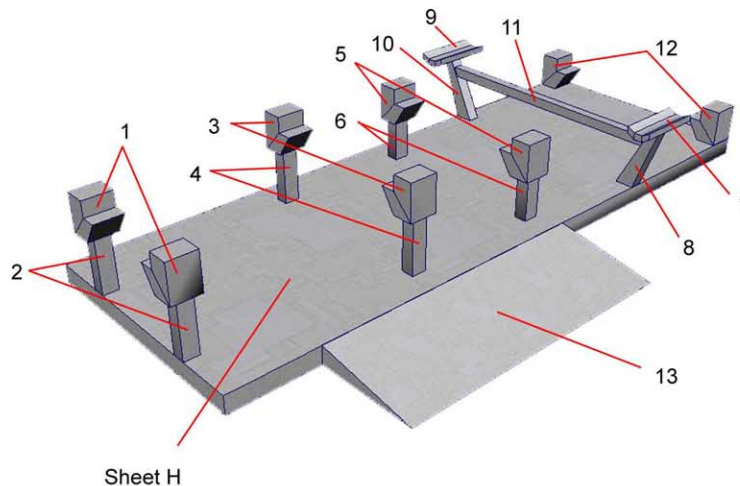


Sheets G & H Display stand OPTIONAL (Cruiser mode only)



NB!!!: Place Part 11 only after parts 7 & 8,
and Parts 9 & 10 have been placed!

Also note that parts 7 & 8, and Parts 9 & 10
seem similar, but are different sizes!



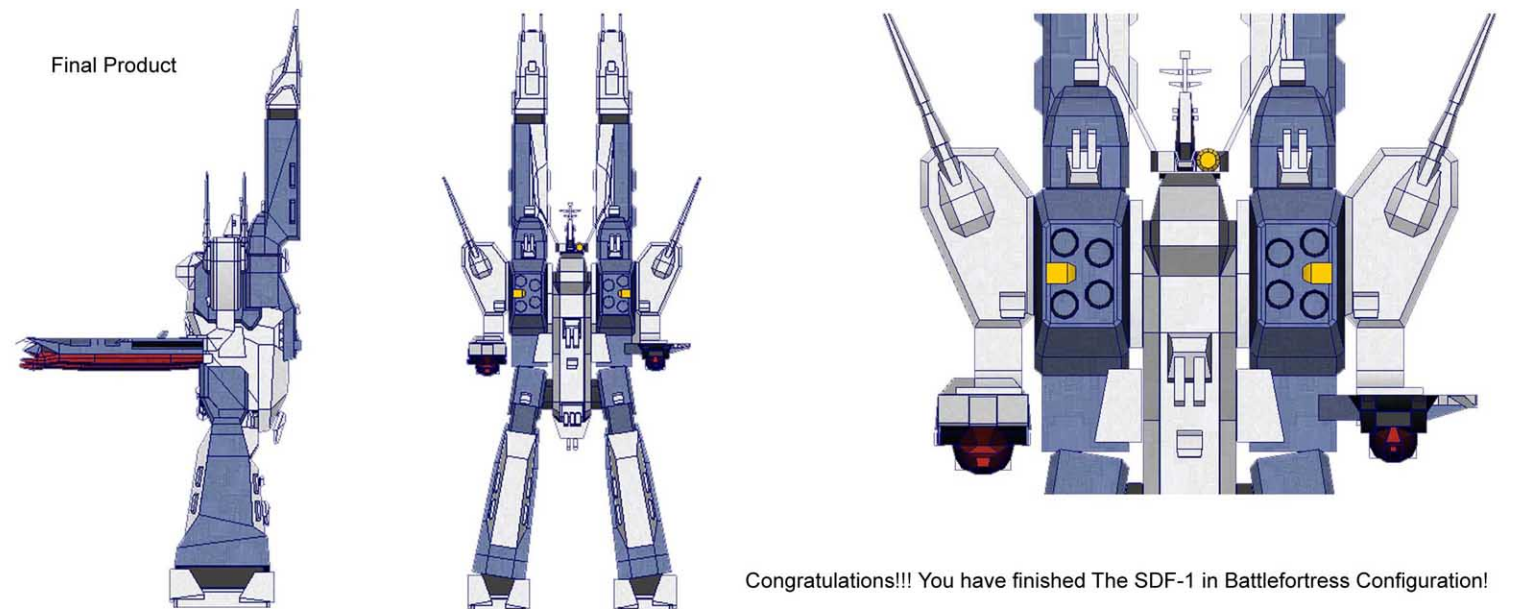
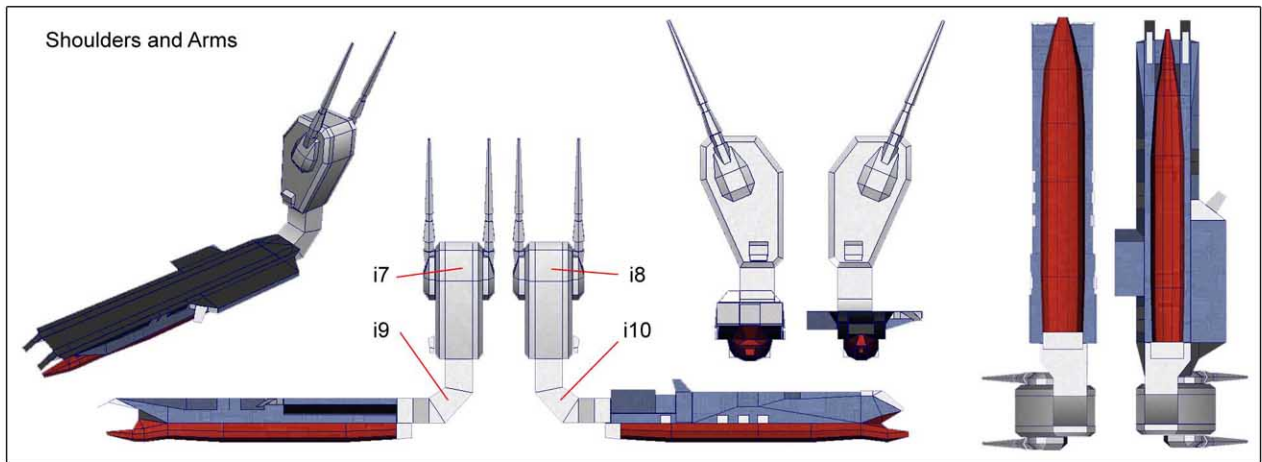
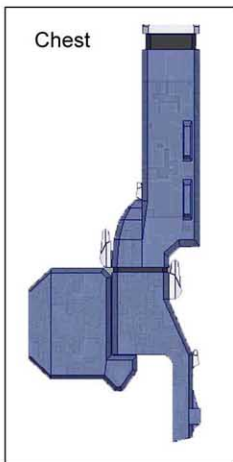
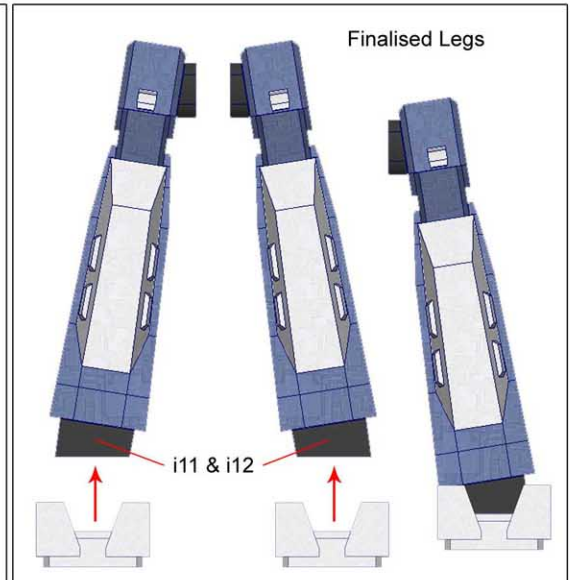
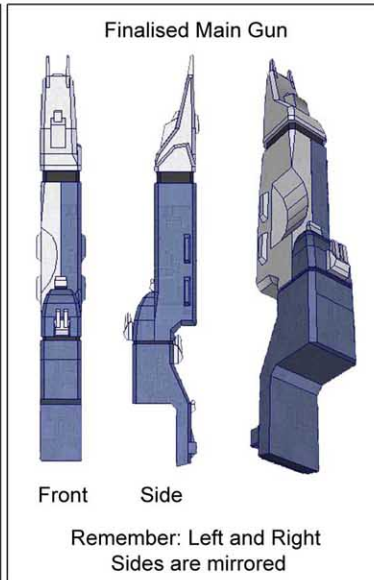
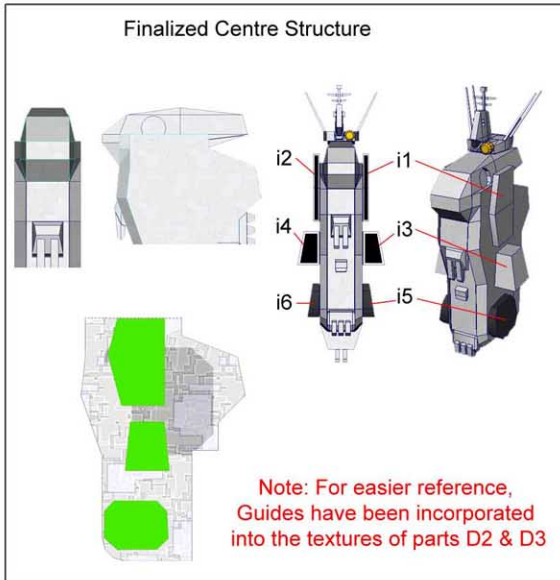
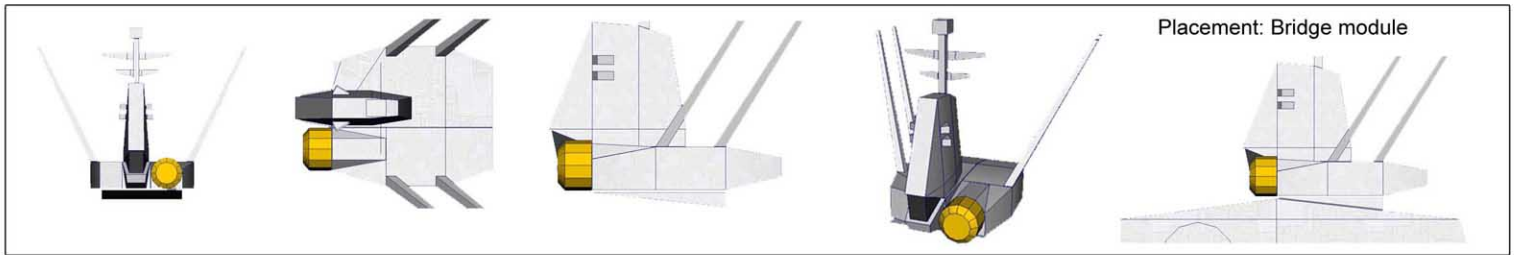
THUNDERCHILD PAPERMECHS

SDF - 1 (HD)

Constructions Instructions

6

Parts Integration - Mode: Battle Fortress



Congratulations!!! You have finished The SDF-1 in Battlefortress Configuration!

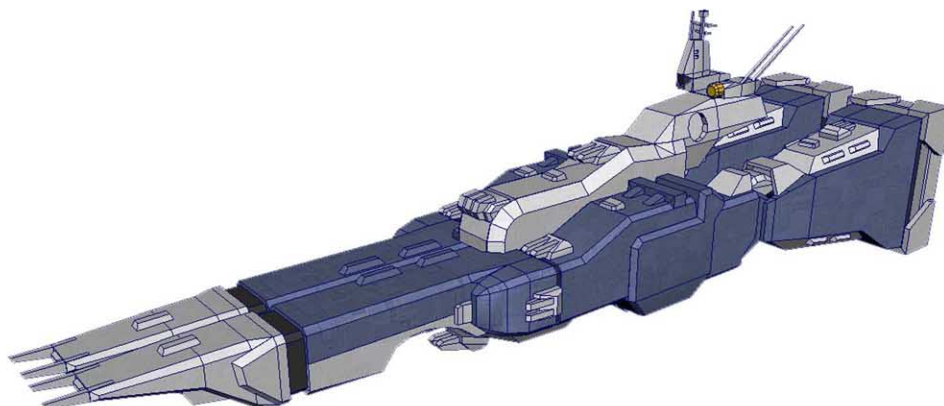
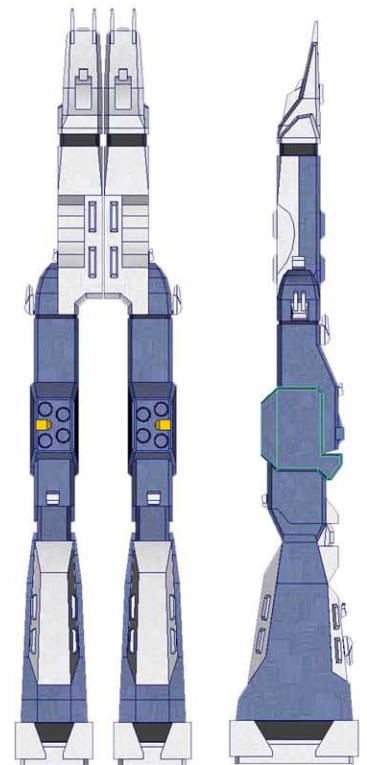
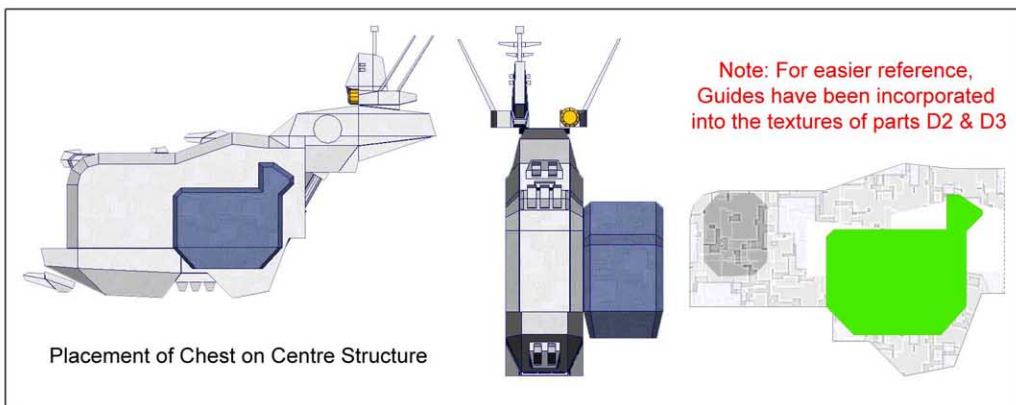
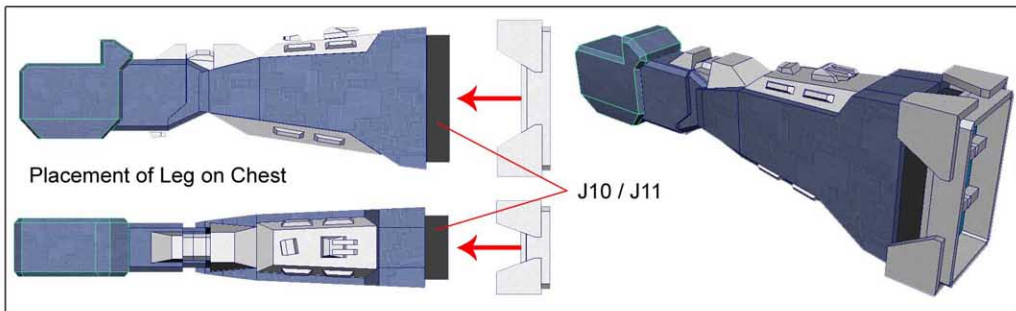
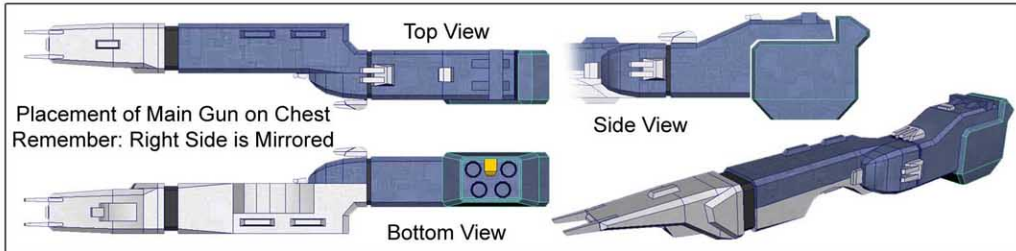
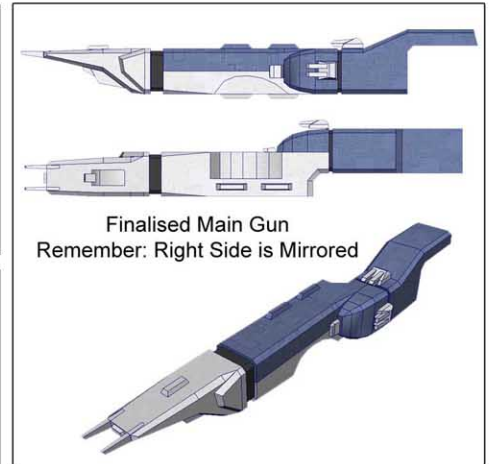
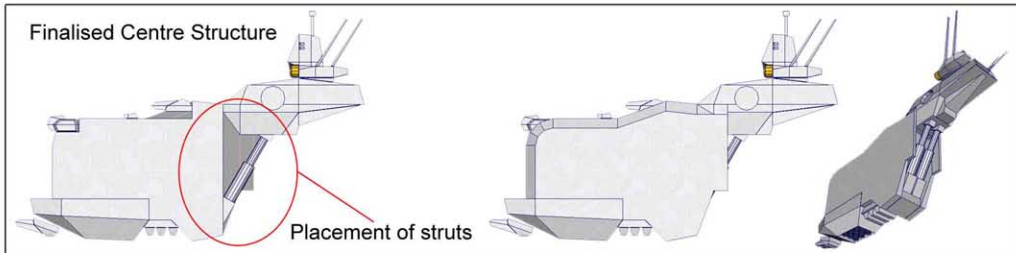
THUNDERCHILD PAPERMECHS

SDF - 1 (HD)

Constructions Instructions

7

Parts Integration - Mode: Cruiser



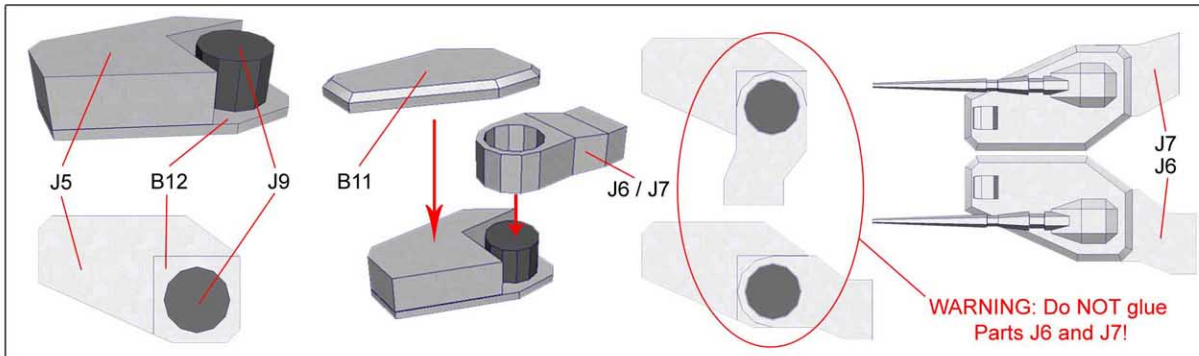
THUNDERCHILD PAPERMECHS

SDF - 1 (HD)

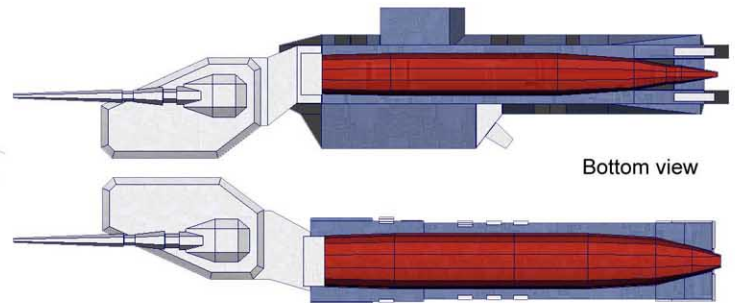
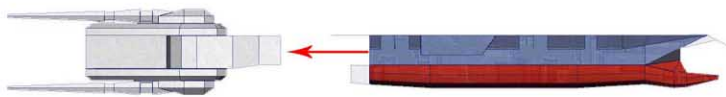
Constructions Instructions

8

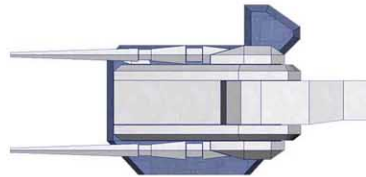
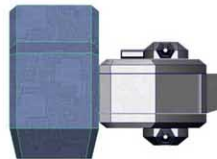
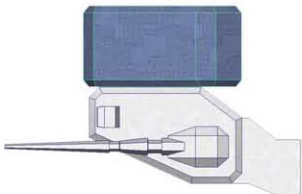
Parts Integration - Mode: Cruiser



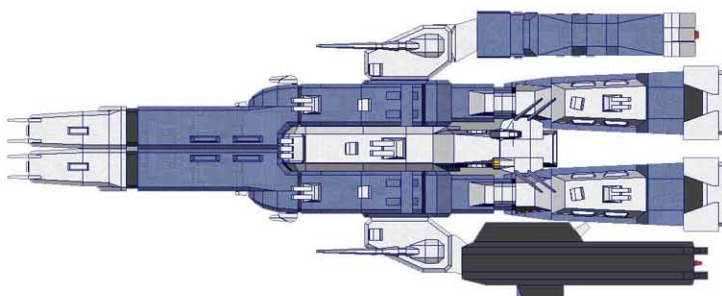
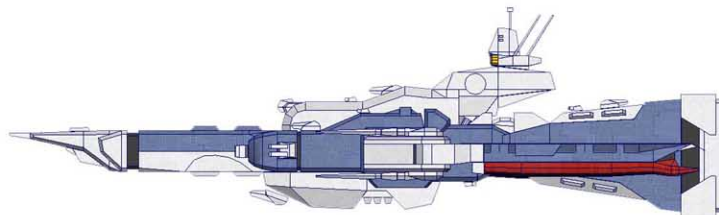
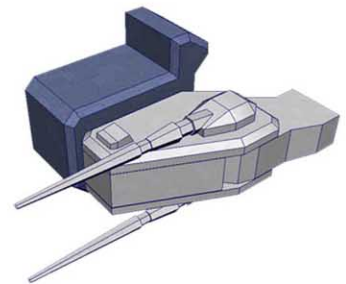
Finalised Shoulder: Placement of Carriers



Placement of Shoulder to chest



Note: Placement guide on Texture of Chest



CONGRATULATIONS! You have completed the SDF-1!

Special thanks Goes to Getter 1, his insights and guidance helped a lot!

Thanks to Everyone at www.Zealot.com, for their guidance, assistance, comments and above all, their motivation! You guys are the best!

This model is provided free!! and is **NOT** for sale.
Distribution on sites other than Zealot.com **ONLY** with designer's permission!

Designer: **ThunderChild**
Email: thunderchild_pdp@yahoo.com

