

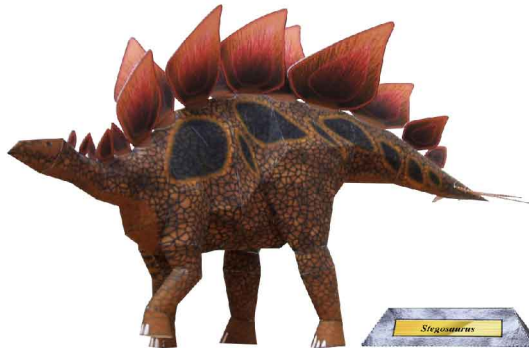
# Stegosaurus : Assembly Instructions

© Canon Inc. © Y. Watanabe

Canon

## PAPER CRAFT

<http://www.canon.com/c-park/en/>

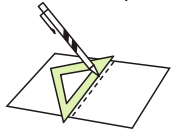


View of completed model

\*This model was designed for Papercraft and may differ from the original in some respects.

### ■ Assembly Instructions : Six US letter sheets (No. 1 to No. 6)

\*Build the model by carefully reading the Assembly Instructions, in the parts sheet page order.



\*Hint: Trace along the folds with a ruler and an exhausted pen (no ink) to get a sharper, easier fold.

### Assembly Instructions



**Mountain fold(dotted line)**  
Make a mountain fold.



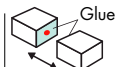
**Valley fold(dashed and dotted line)**  
Make a valley fold.



**Scissors line(solid line)**  
Cut along the line.



**Cut in line(solid line)**  
Cut along the line.



Glue  
The glue spot(colored dot) shows where to apply the glue.



**Glue spot(Red dot)**  
Glue parts with the same number together.



**Glue spot(Green dot)**  
Glue within the same part.



**Glue spot(Blue dot)**  
Glue to the rear of the other part.

#### Tools and materials



Scissors, set square, glue(We recommend stick glue), pencil, used ballpoint pen, toothpicks, tweezers, (useful for handling small parts)

#### Assembly tip



Before gluing, crease the paper along mountain fold and valley fold lines and make sure rounded sections are nice and stiff.

#### Caution



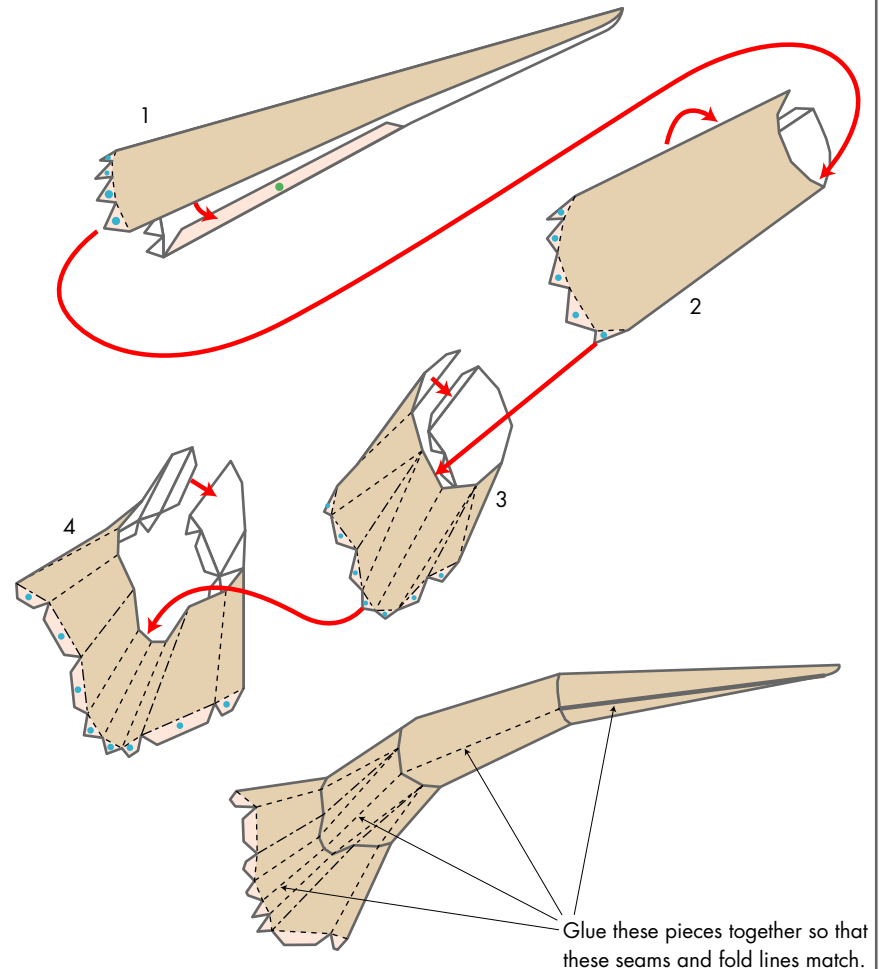
Glue, scissors and other tools may be dangerous to young children so be sure to keep them out of the reach of young children.

Before starting assembly: Writing the number of each section on its back side before cutting out the sections is highly recommended.  
(\* This way, you can be sure which section is which even after cutting out the sections.)

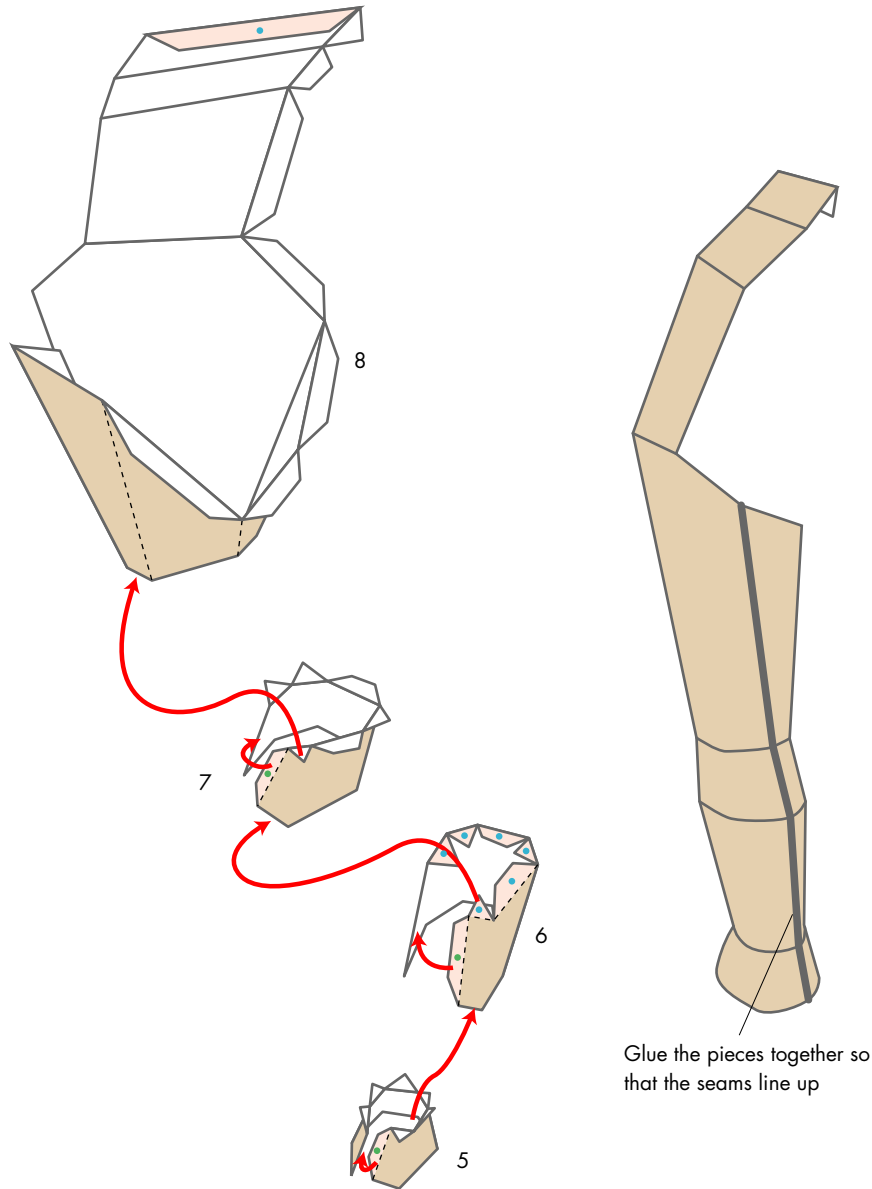
→ Indicates where sections should be glued together.

#### Assembling the tail : Parts 1 - 4

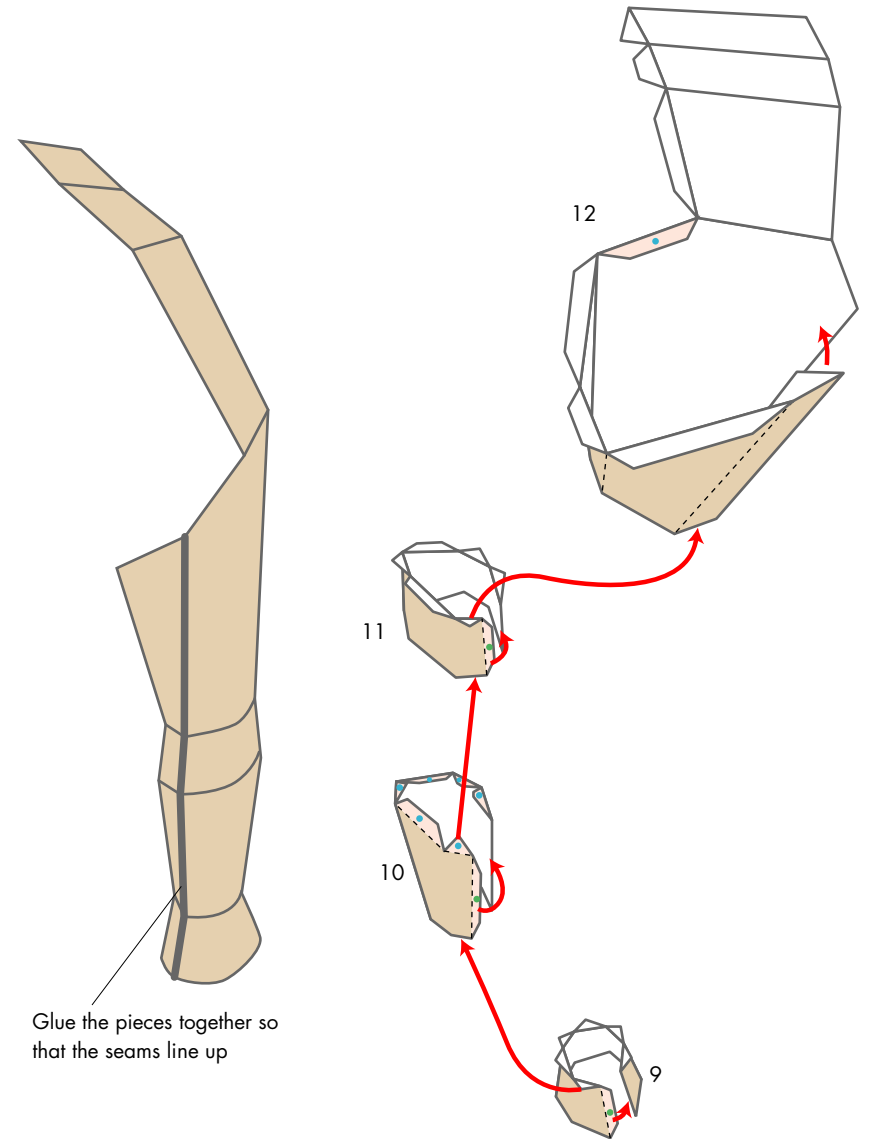
Glue each part into a tubular shape and attach the parts to each other in part-number order, from 1 through 4.



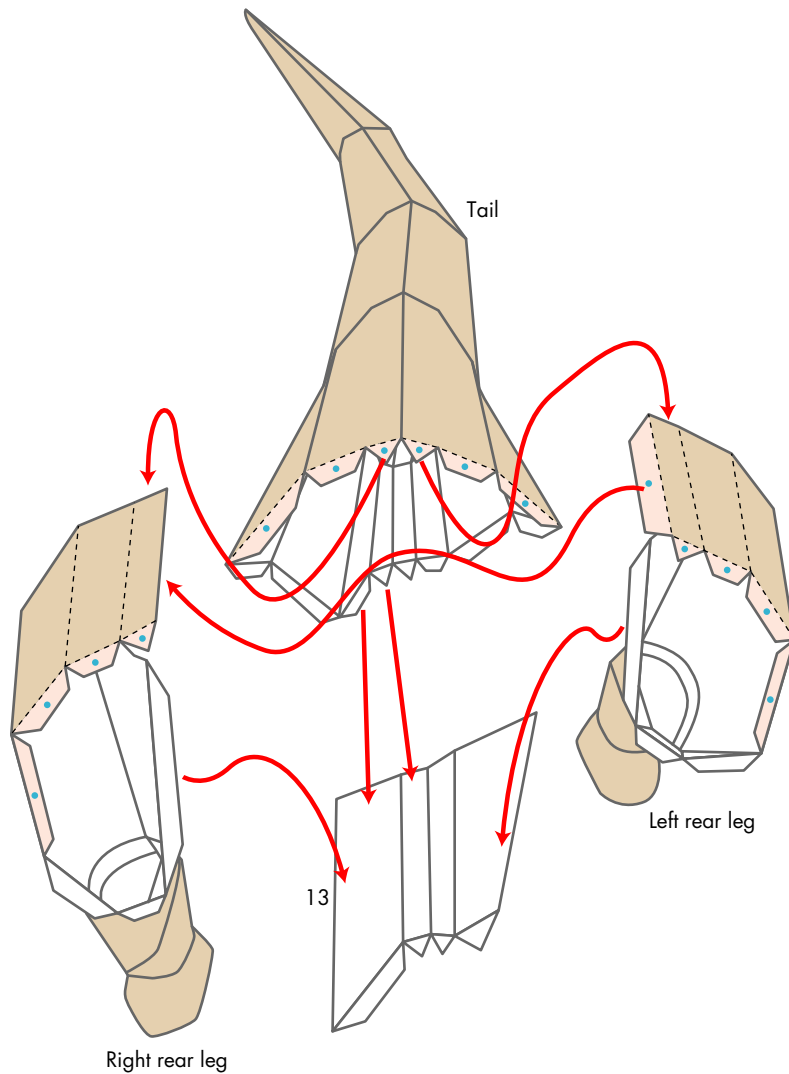
Assembling the left rear leg : Parts 5 - 8



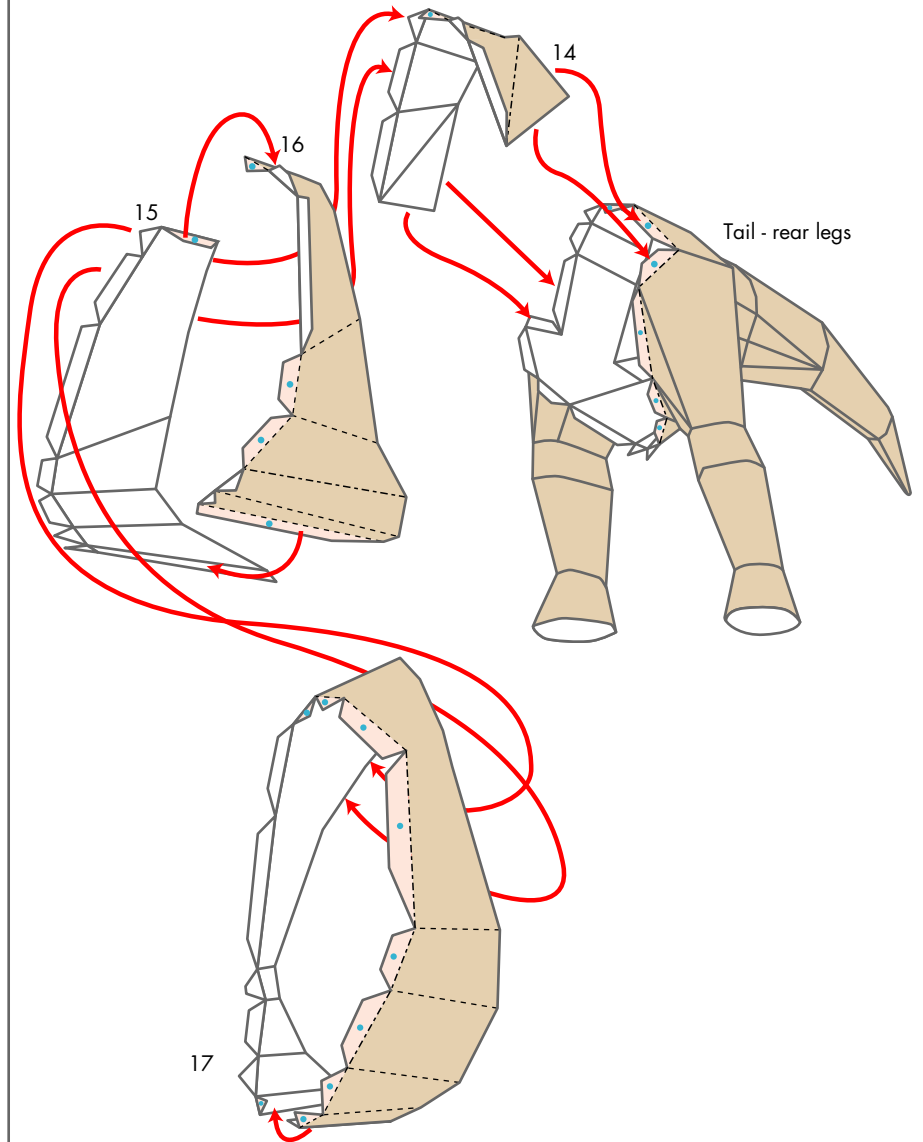
Assembling the right rear leg : Parts 9 - 12



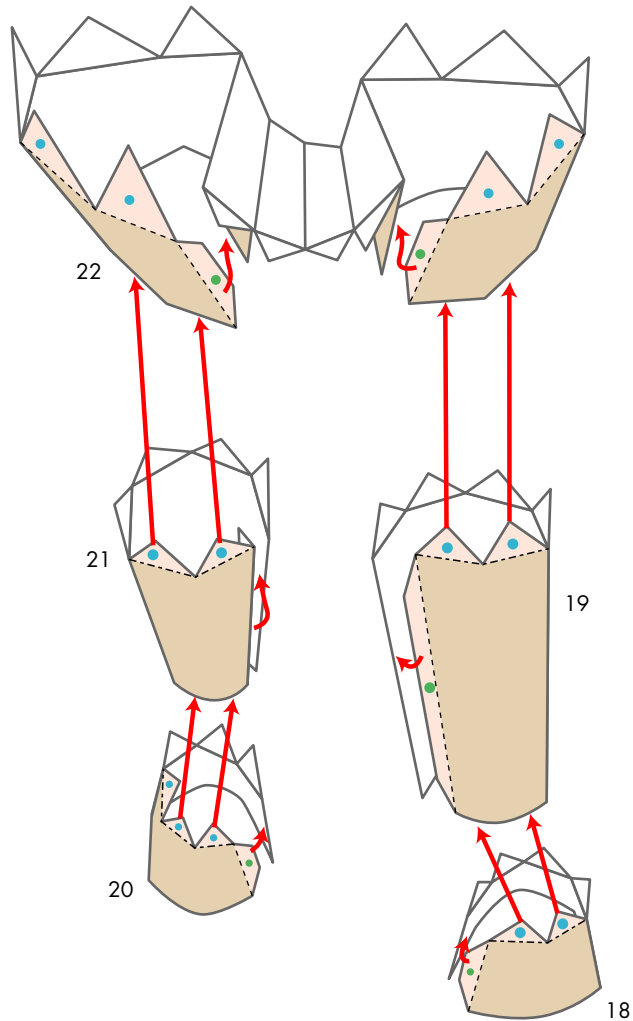
Assembling the rear legs, the tail, and the lower back region : Part 13



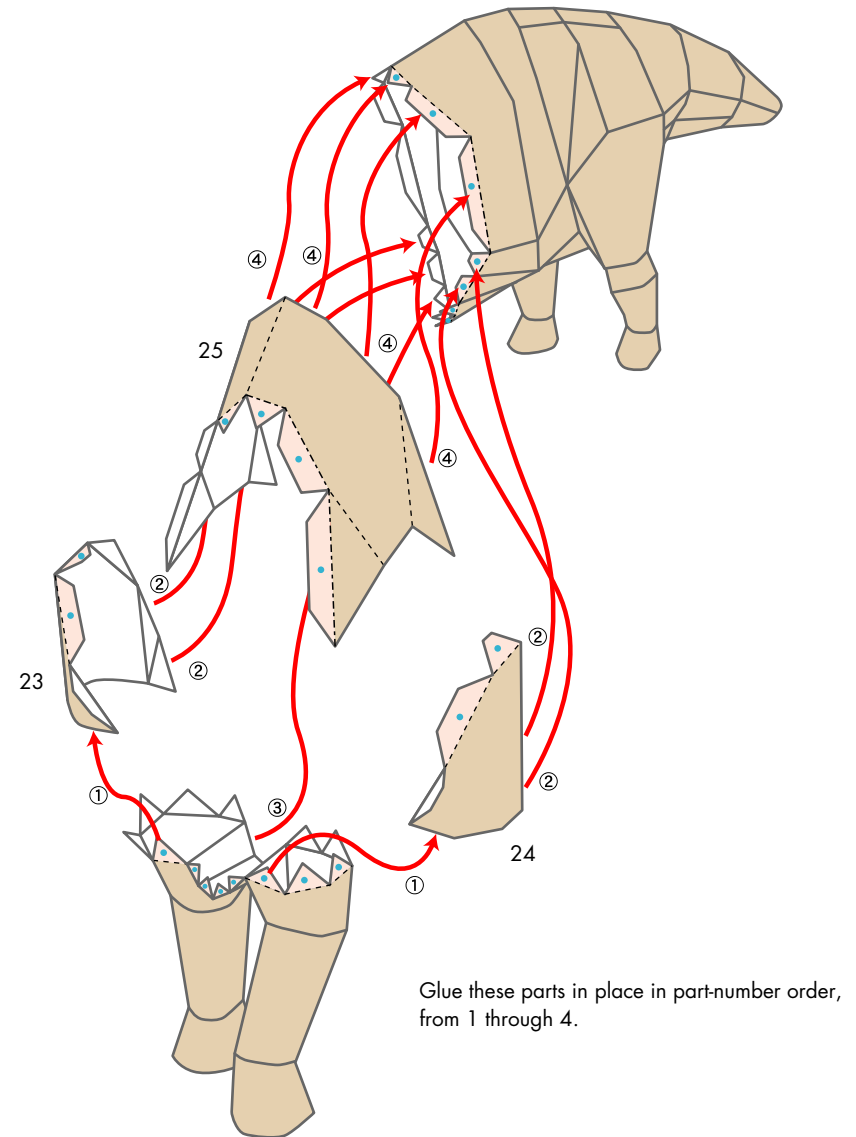
Assembling the body : Parts 14 - 17



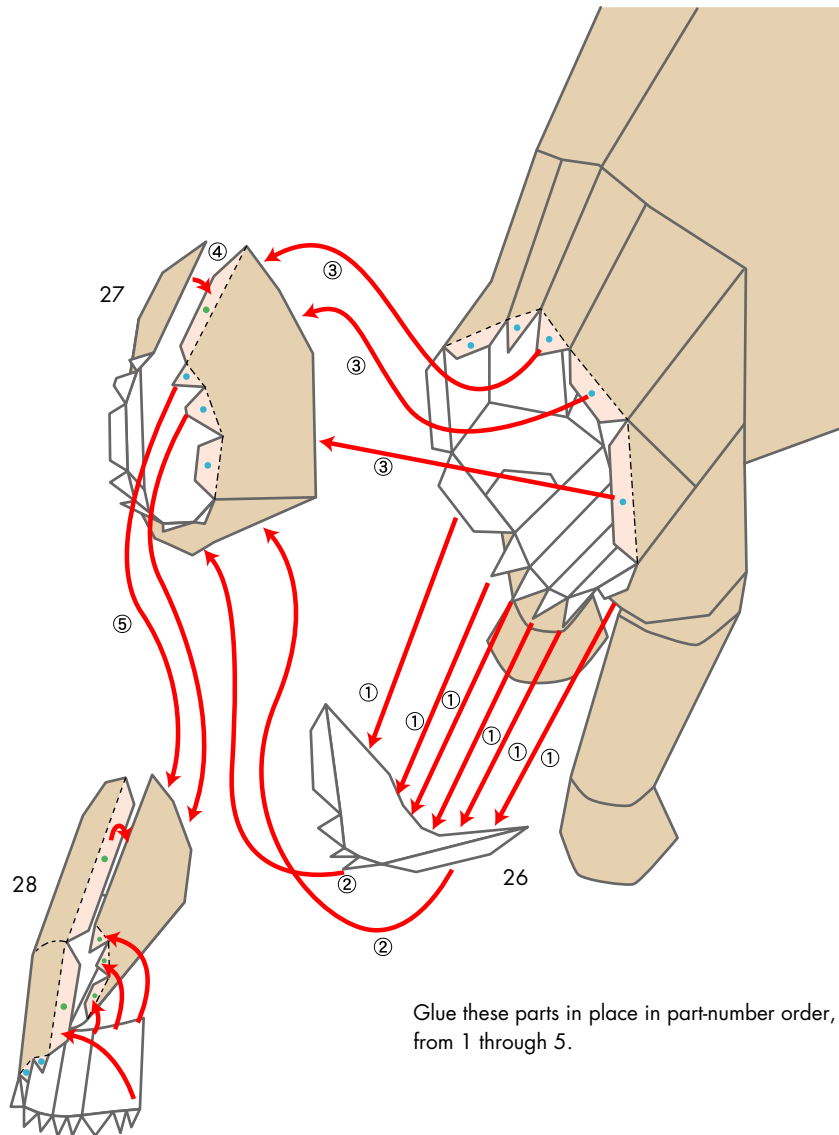
Assembling the front legs : Parts 18 - 22



Assembling the front legs : Parts 23 - 25

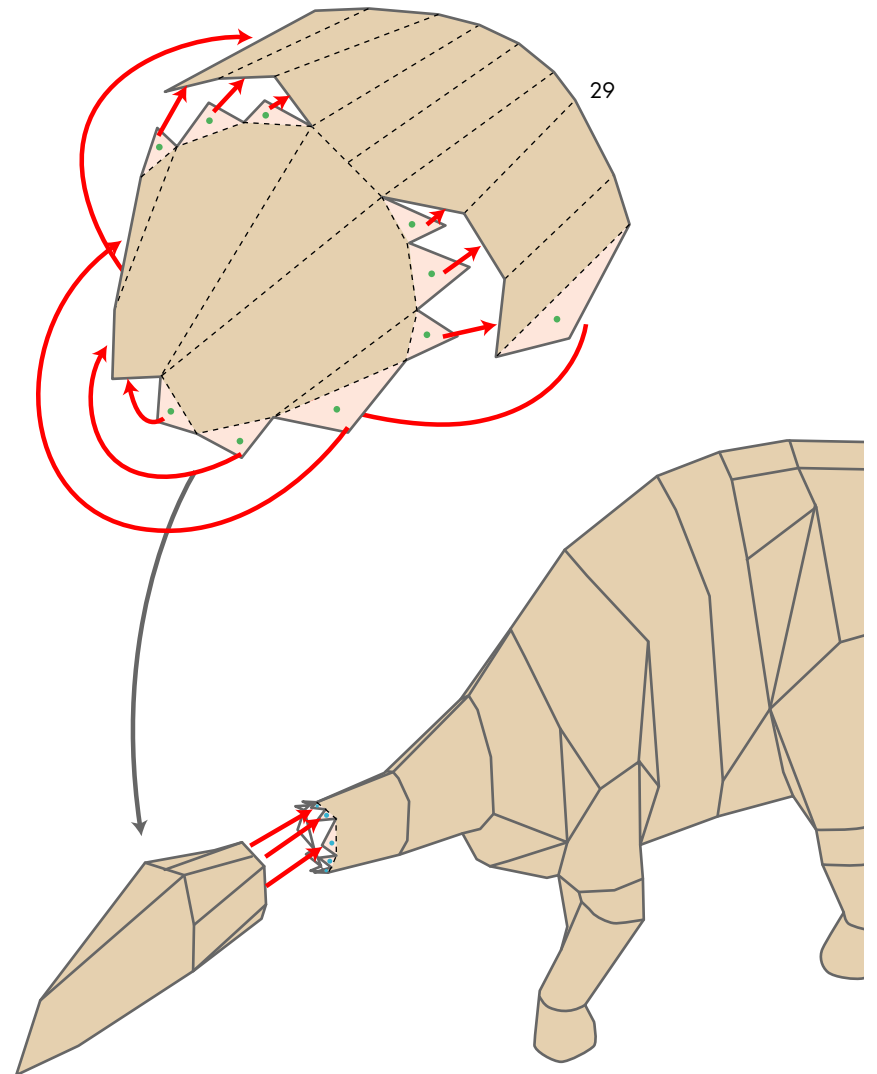


Assembling the neck : Parts 26 - 28



Glue these parts in place in part-number order, from 1 through 5.

Assembling the head : Part 29

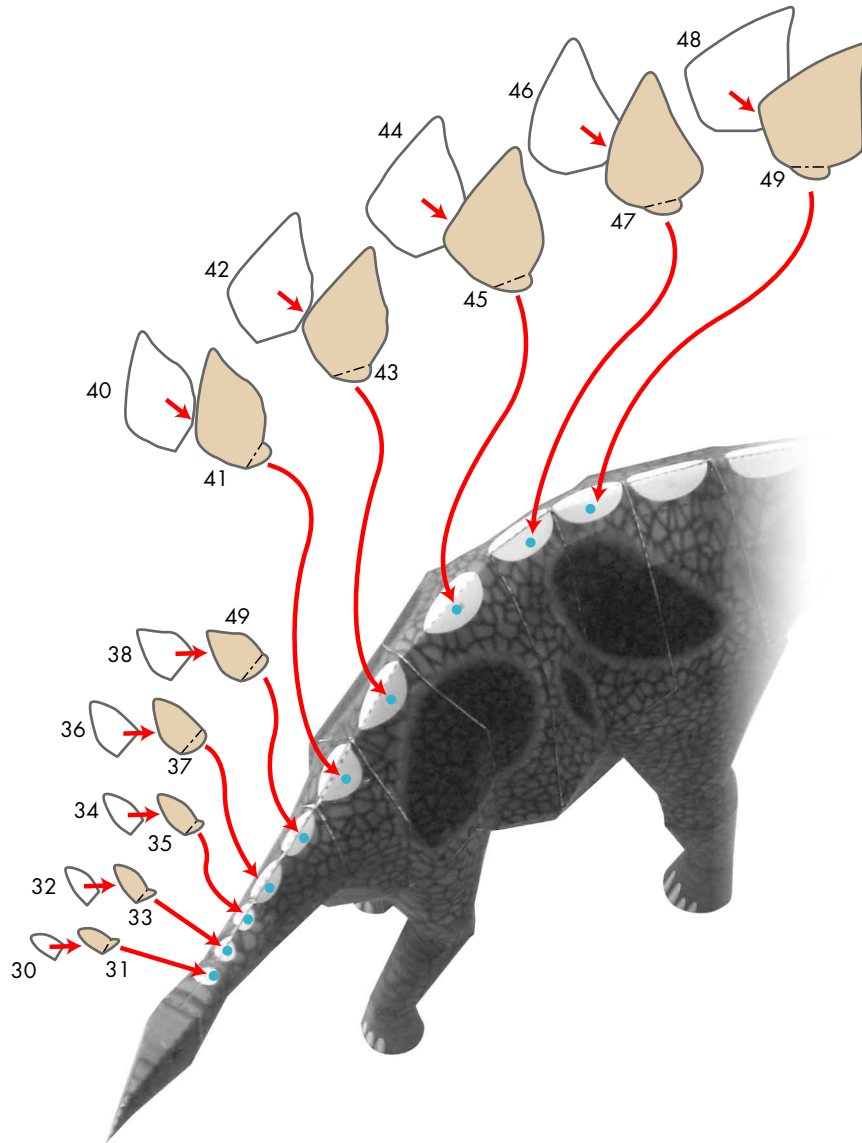


# Stegosaurus : Assembly Instructions

© Canon Inc. © Y. Watanabe

Canon

Assembling the bony plates : Parts 30 - 49



Assembling the bony plates and the label : Parts 50 - 62

