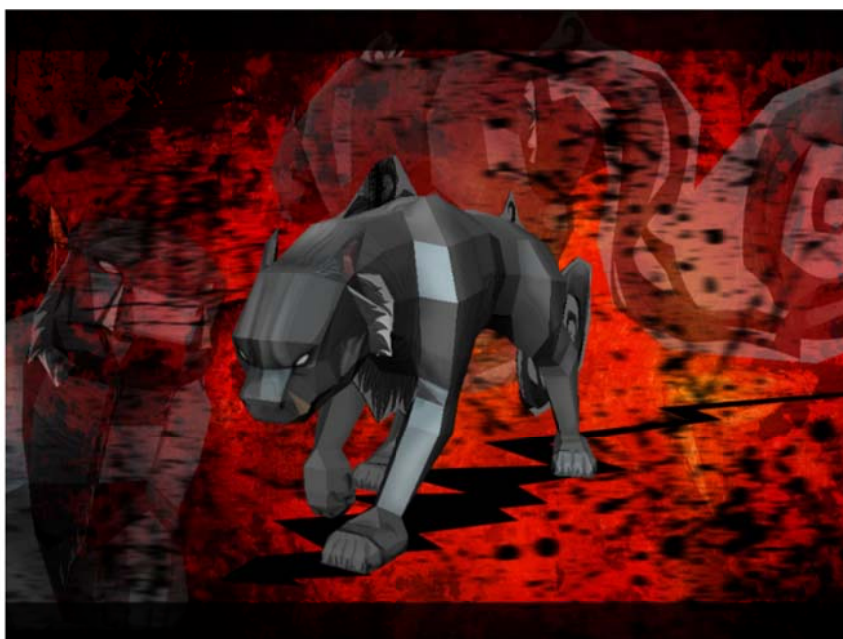


Black Rage Papercraft

by the-Adventurer-0815

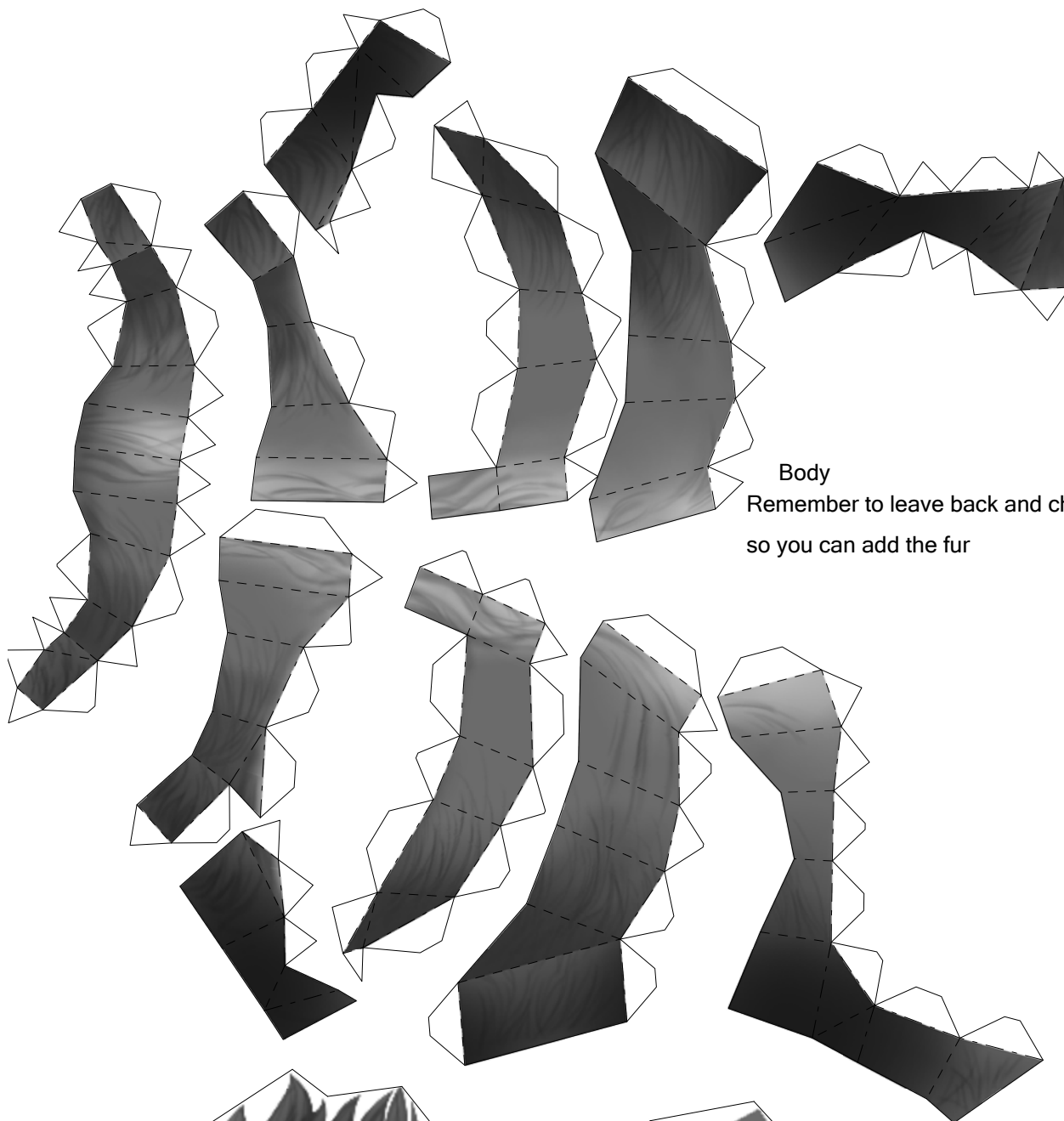


2

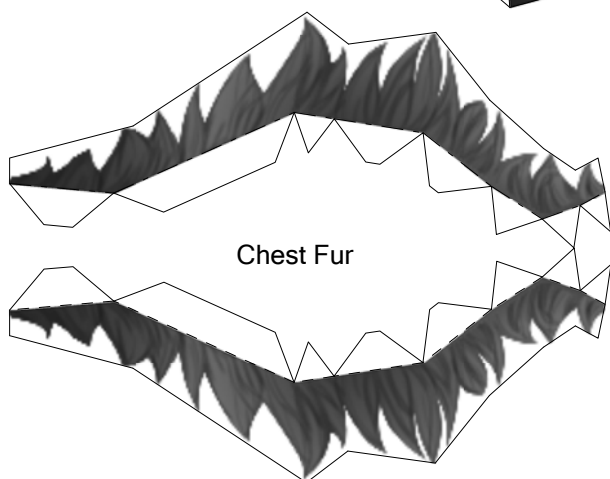
This beast, known as black Rage is a thought entity known only to live in the strongest of minds. It represents irrational hatred and anger and might even be hostile towards its "owner". When encountered during a dream or the state of meditation, this muscle and fur packed beast usually has the size of an ox and will pursue its prey relentlessly until one dies

The papercraft:
Lucky for you, this beast's papercraft is not as half as dangerous than the original.
Height: 10 cm
Length: 22 cm
Width: 6 cm
This model's details include the fur, ears and the Jaw which can be attached either open or closed.

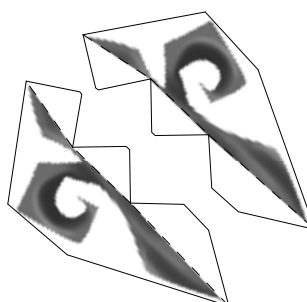




Body
Remember to leave back and chest open
so you can add the fur



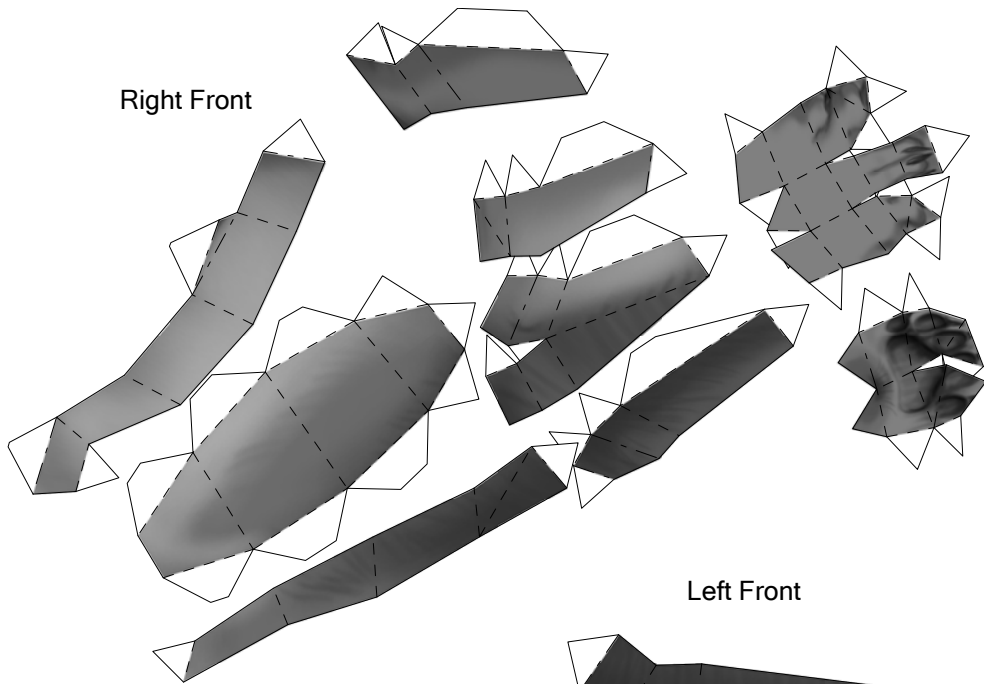
Chest Fur



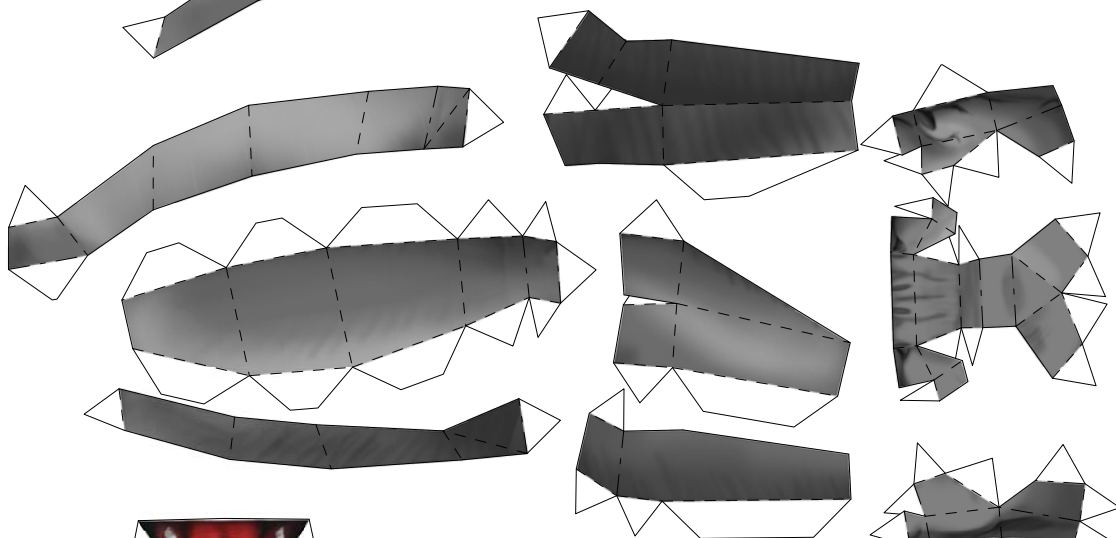
BackFur

First, glue both sides of the fur together
then attach them to one half of the body
then combine with the other half
You can cut the fur out either before
or after assembling. (Before should be easier)

Right Front



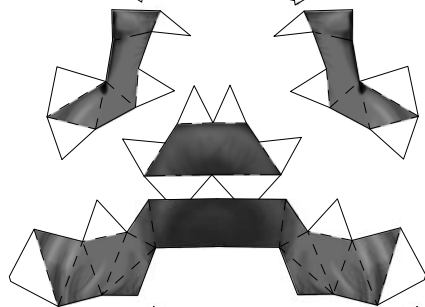
Left Front



Jaw



-- these small bits go inside the jaw



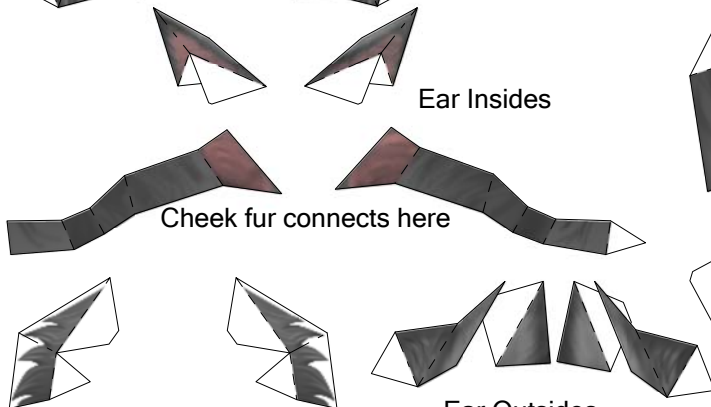
Assemble the jaw carefully.

With the extra folds/flaps on the cheeks

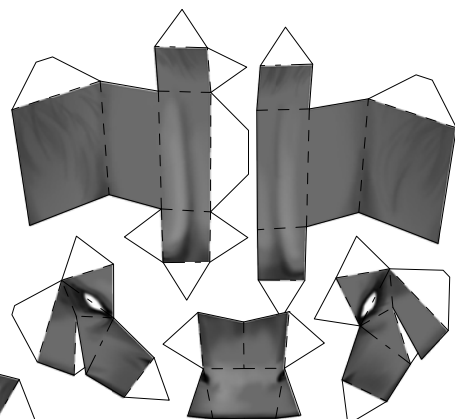
you can glue the jaw into whatever position you like.

Ear Insides

Cheek fur connects here



Ear Outsid



Head

