



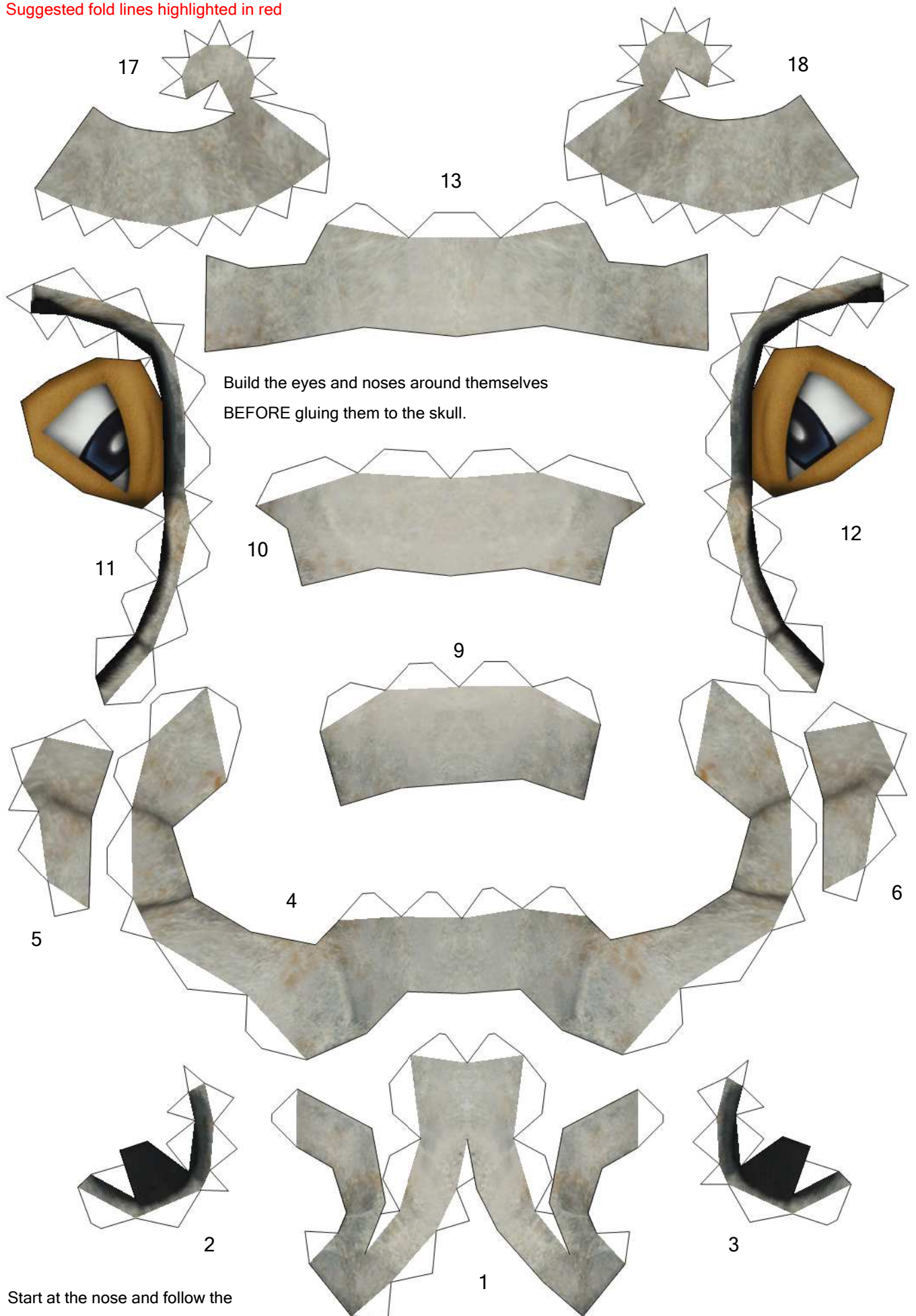
Cubone V3

By Brandon

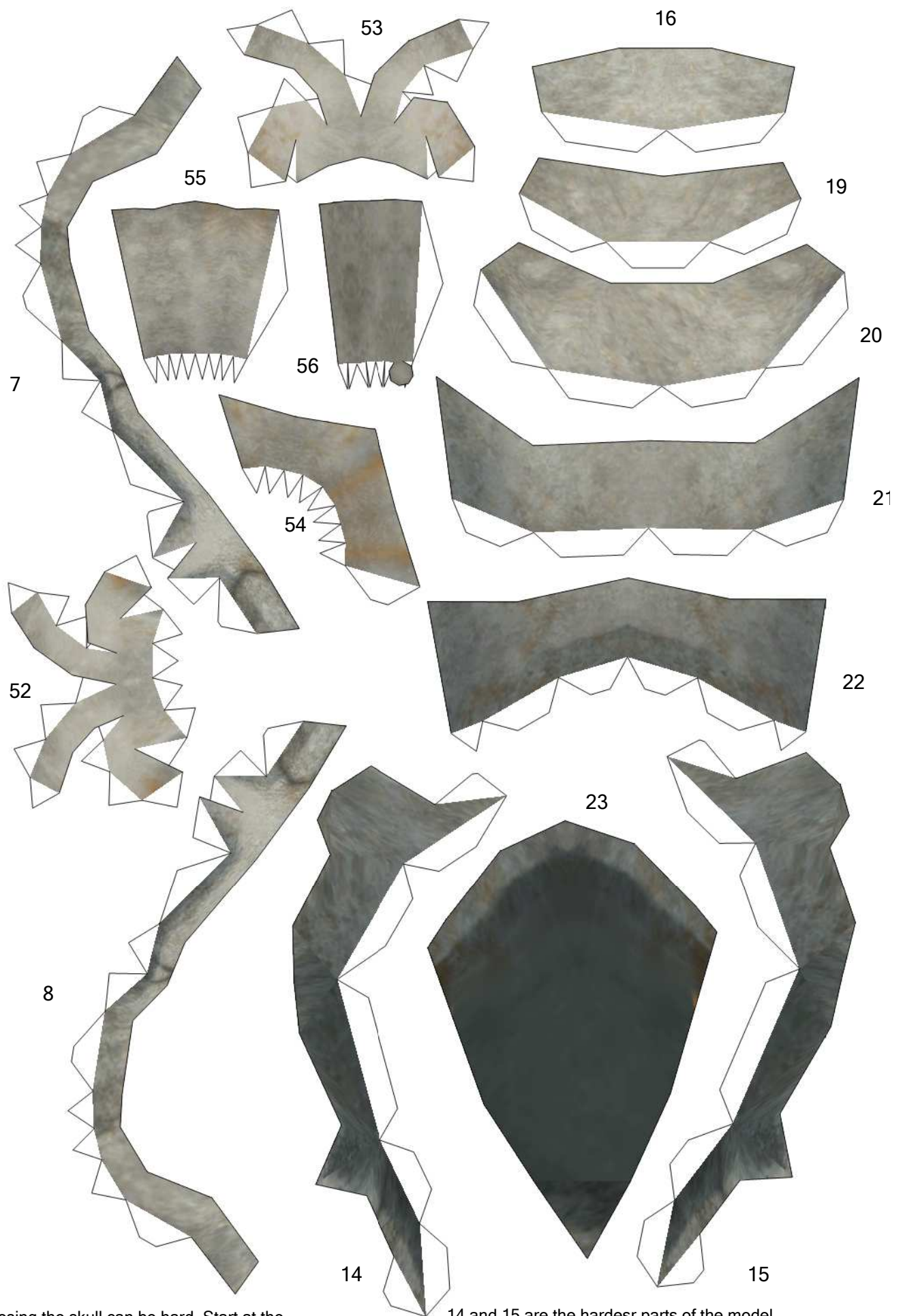
Build by LuIS

Paper Pokés
www.pokemonpapercraft.net

Suggested fold lines highlighted in red

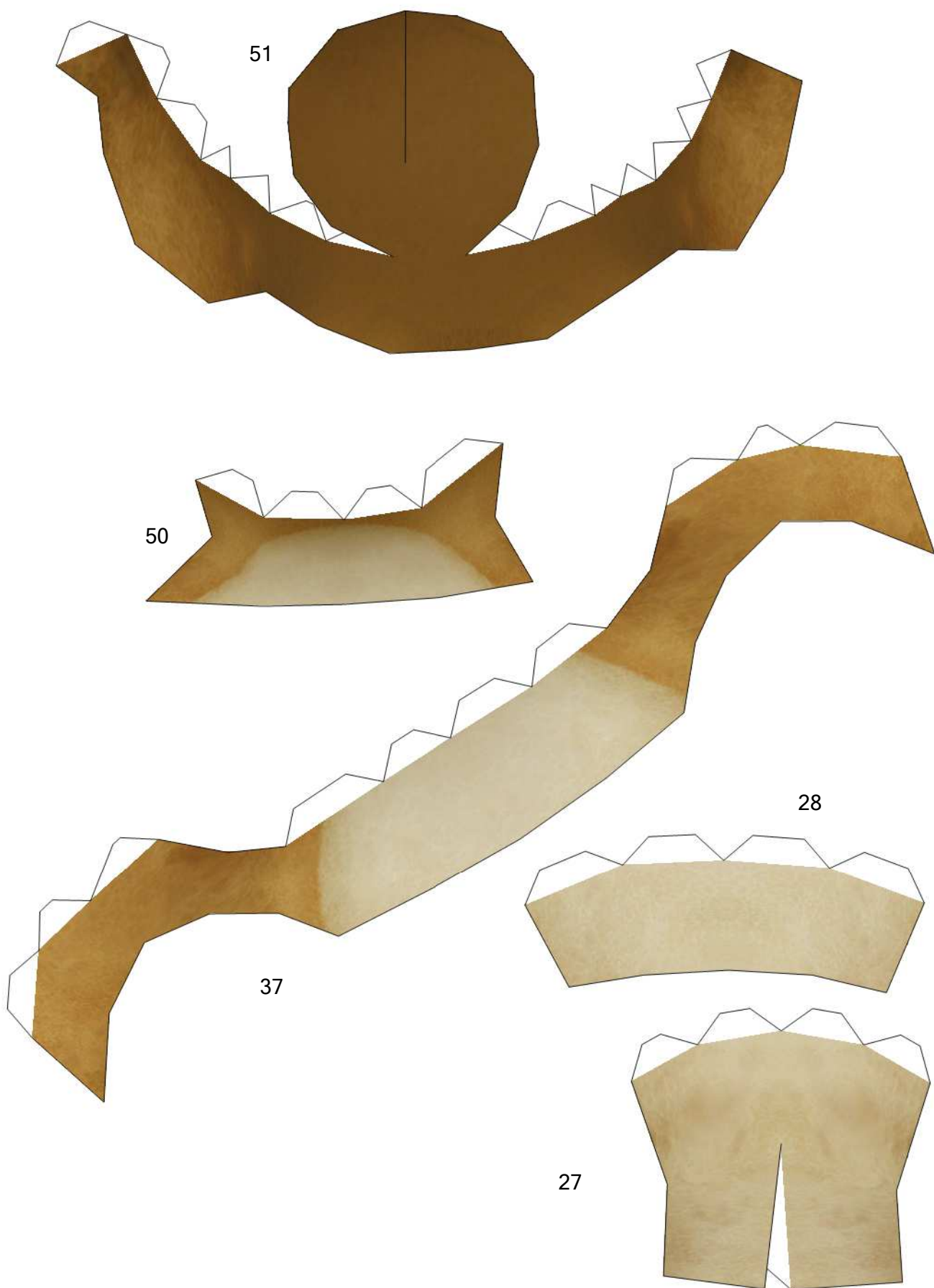


Start at the nose and follow the
numbers on the skull.

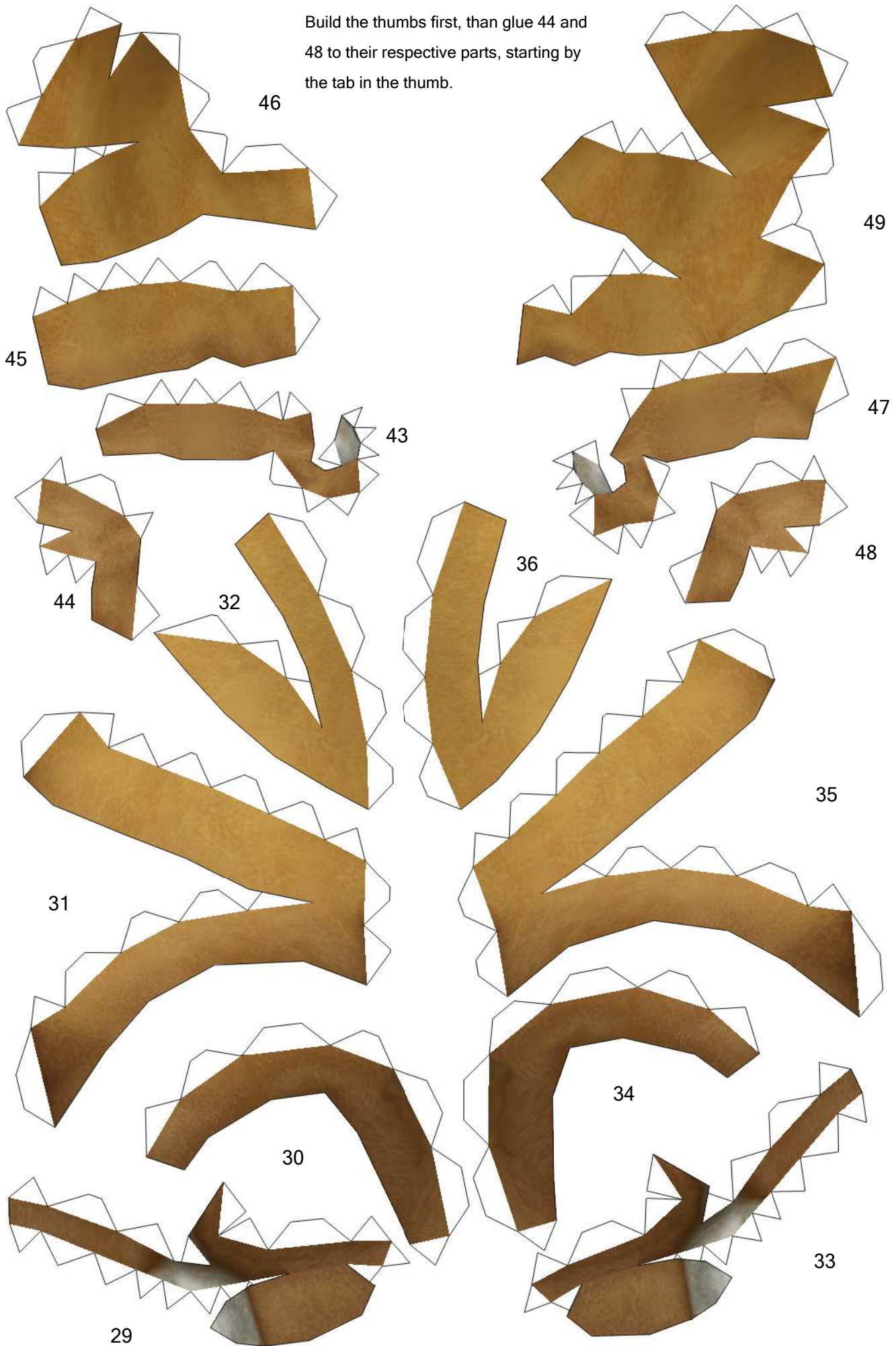


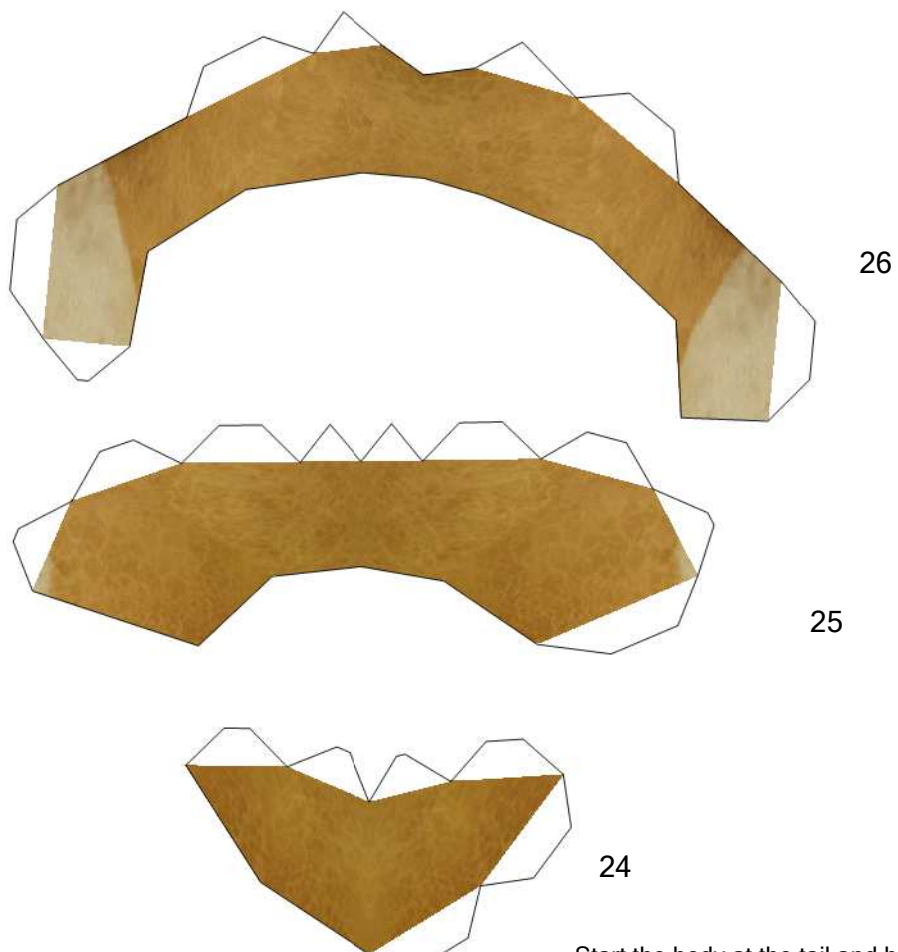
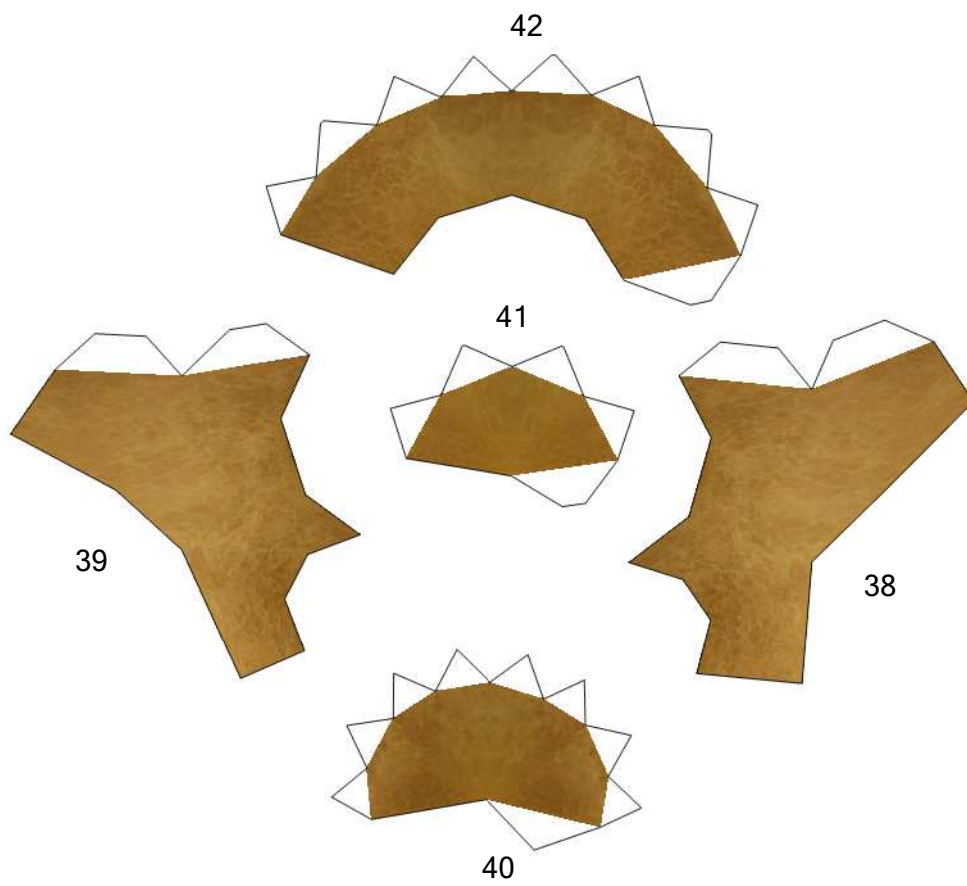
Closing the skull can be hard. Start at the front and close at the back.

14 and 15 are the hardest parts of the model.
I strongly recommend you fold the indicated lines.



Build the thumbs first, than glue 44 and 48 to their respective parts, starting by the tab in the thumb.





Start the body at the tail and build up.