

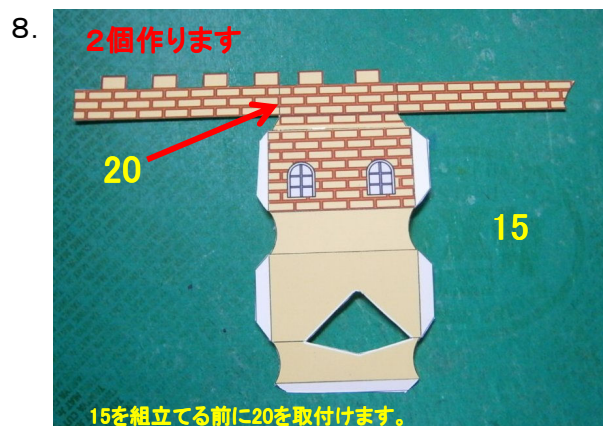
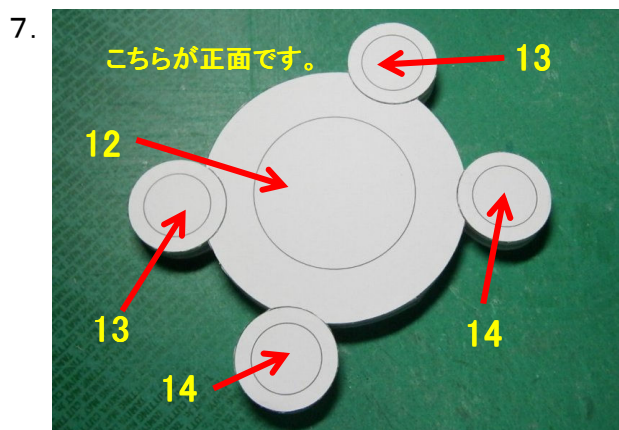
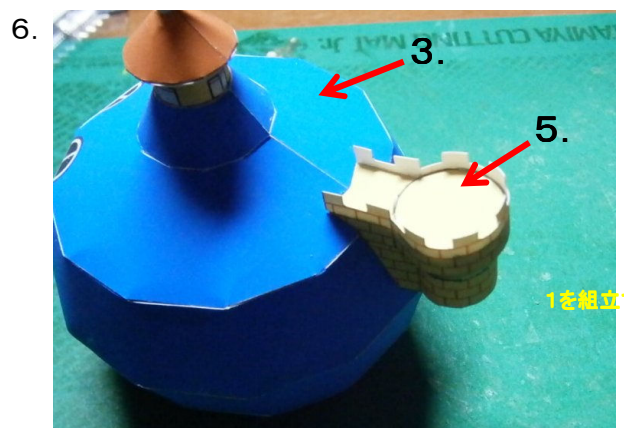
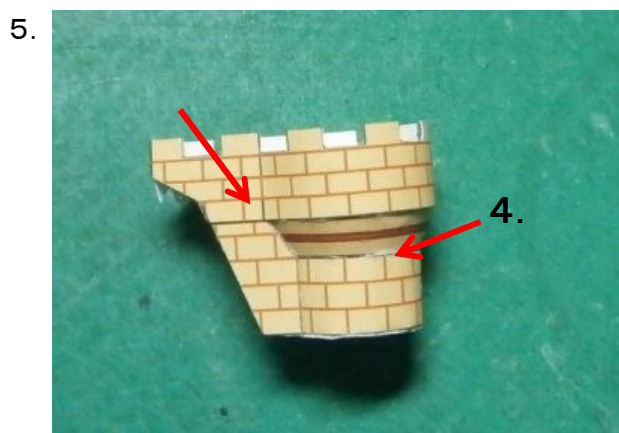
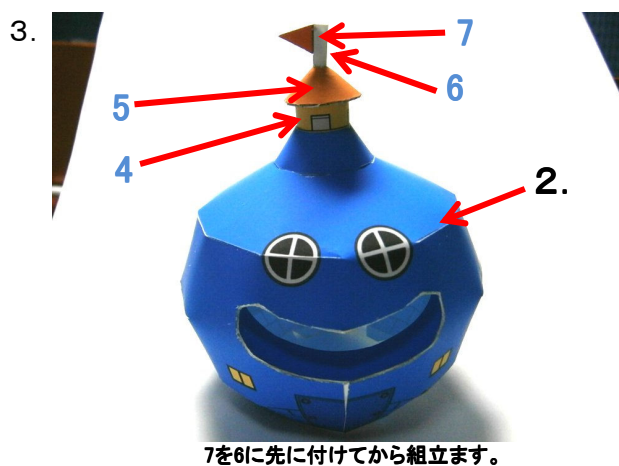
勇車スラリソタル 組立説明書

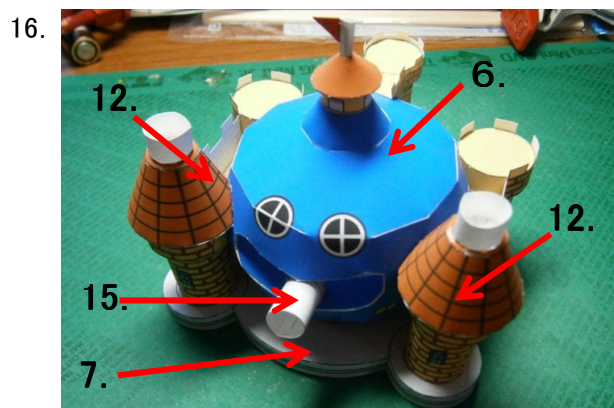
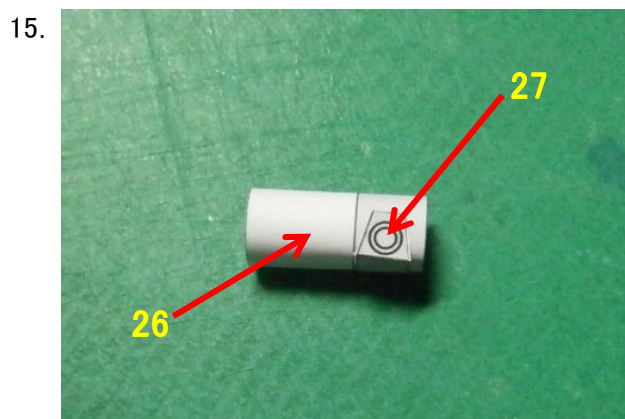
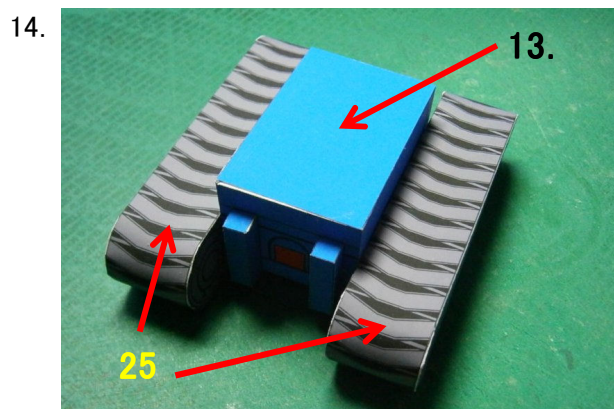
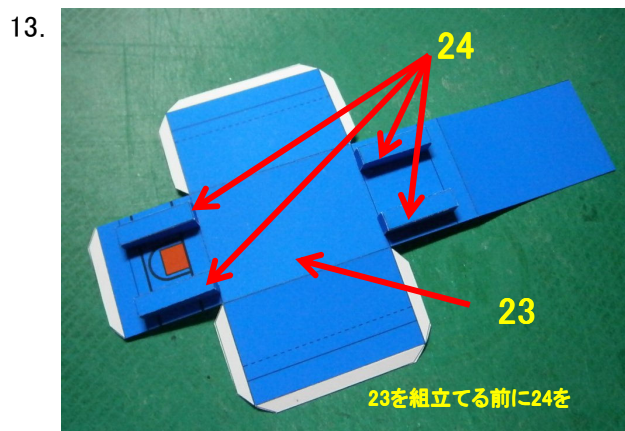
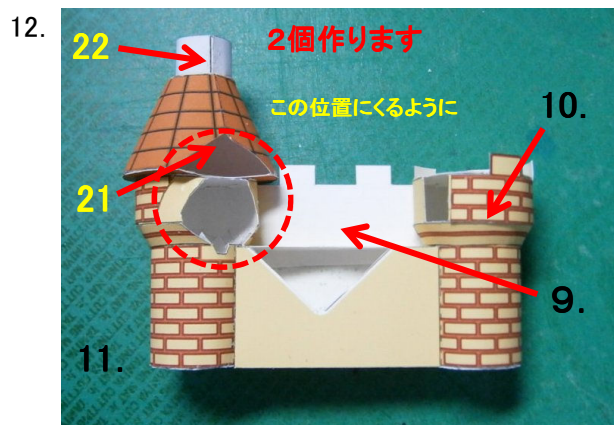
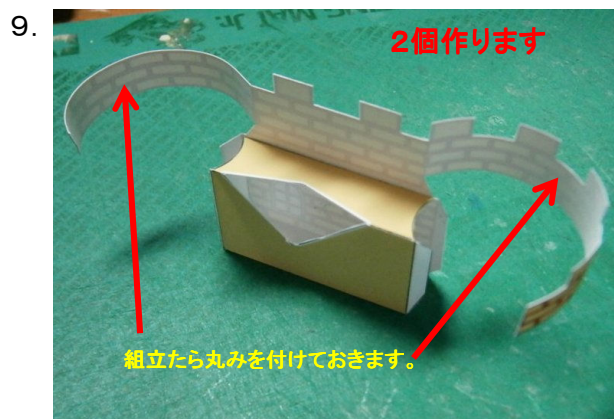
このたびは、勇車スラリソタルをDLして頂き、誠に有難う御座います。
組立説明の前に注意事項をお読み下さい。

1. 用紙はインクジェット紙の厚口を推奨します。
2. 「作り方が分らないぞ! (〃〃) ゴルア!」
説明書をみても分からなければ下記のアドレスまで御一報下さい。

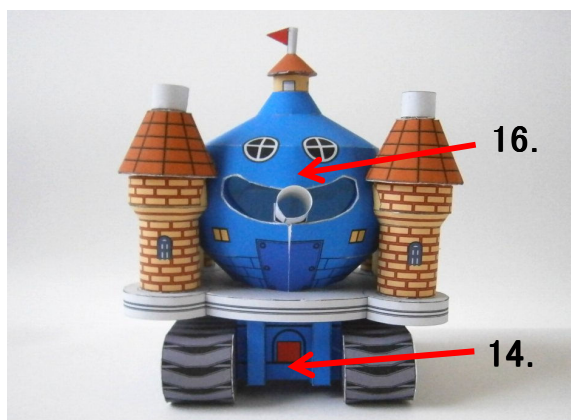
よっしいの屋根裏作業部屋
<http://blog.livedoor.jp/punipuniman100/>
mail: punipuniman100@livedoor.com

スラリンガルの組立

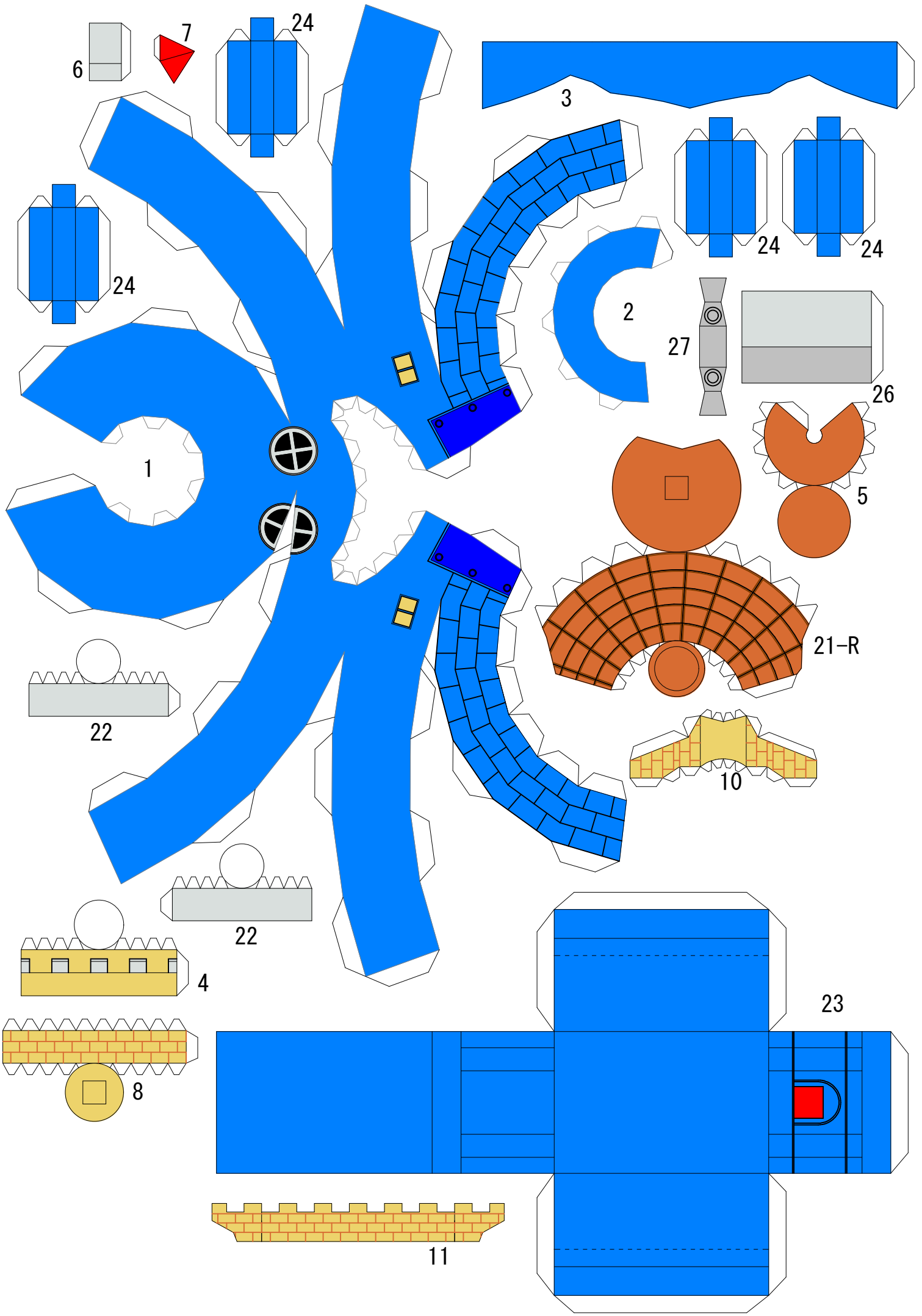


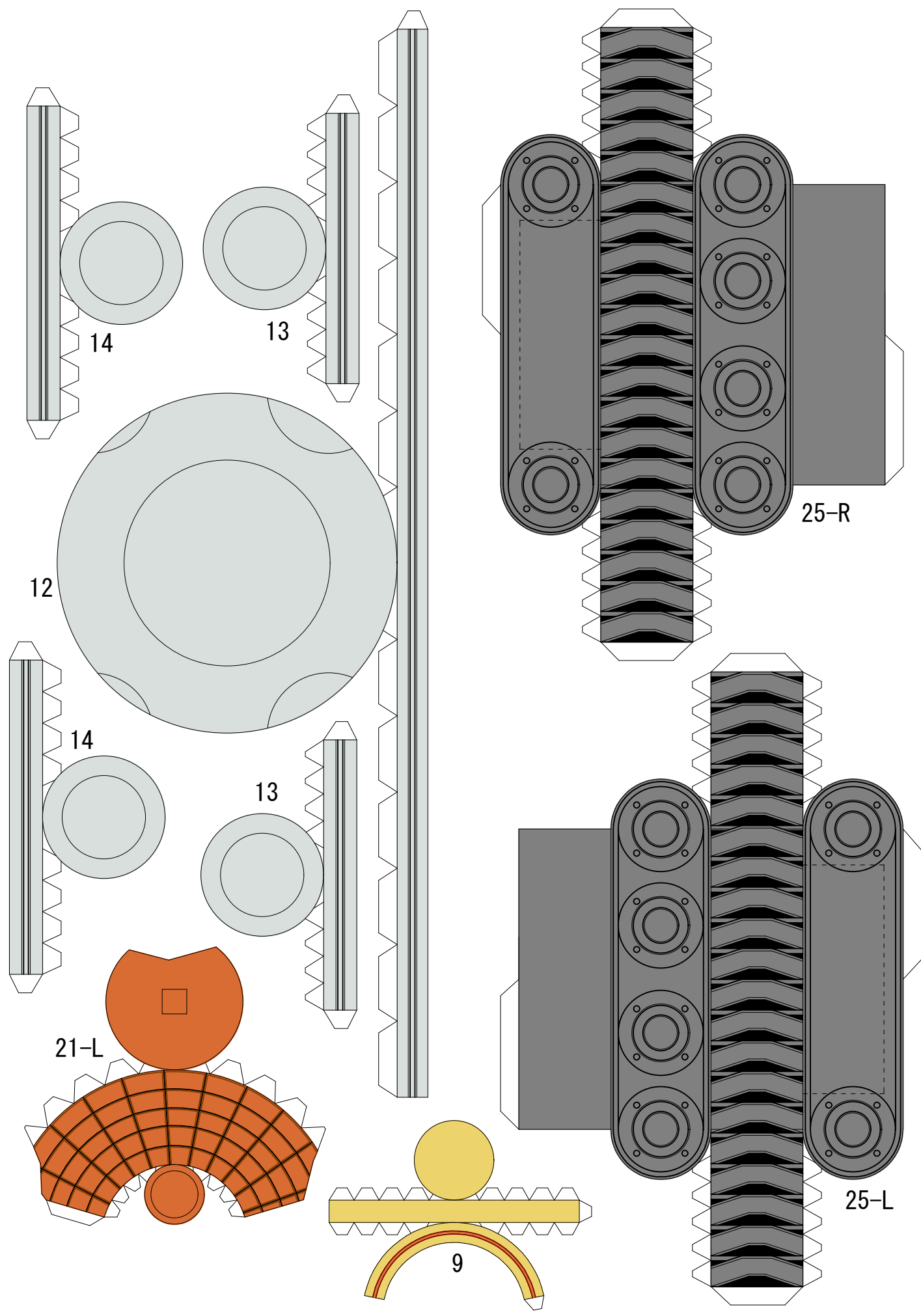


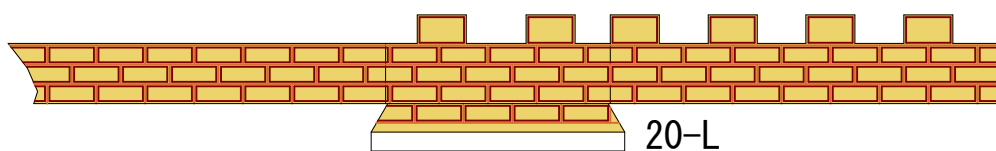
17.



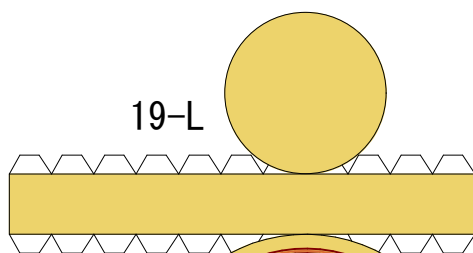
完 成



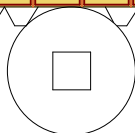
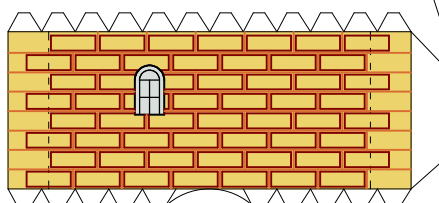
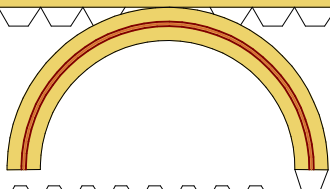




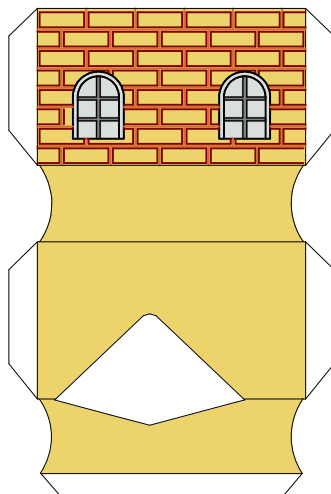
20-L



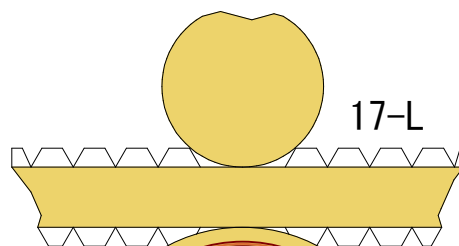
19-L



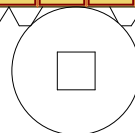
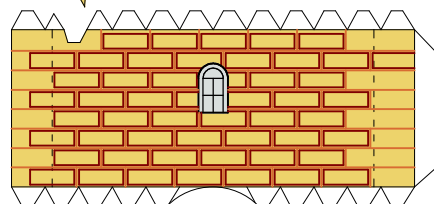
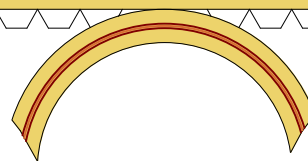
18-L



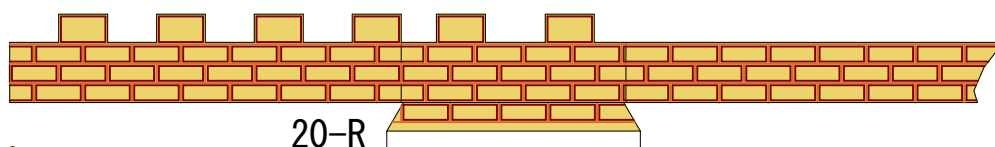
15-L



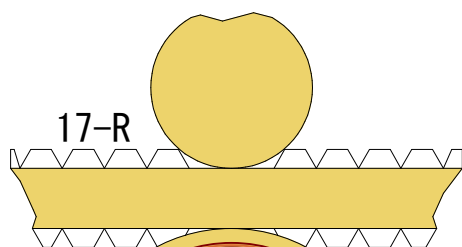
17-L



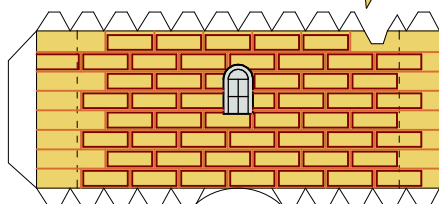
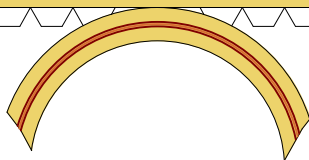
16-L



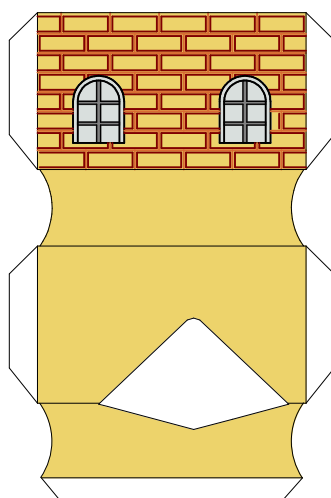
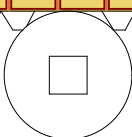
20-R



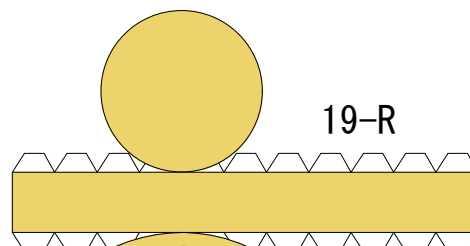
17-R



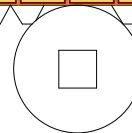
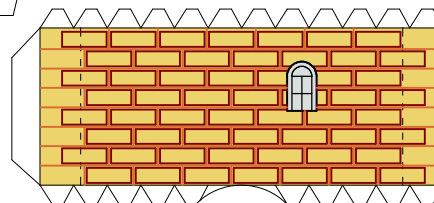
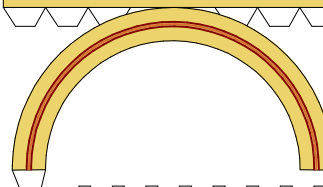
16-R



15-R



19-R



18-R