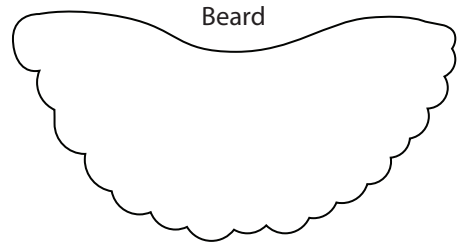


Arm

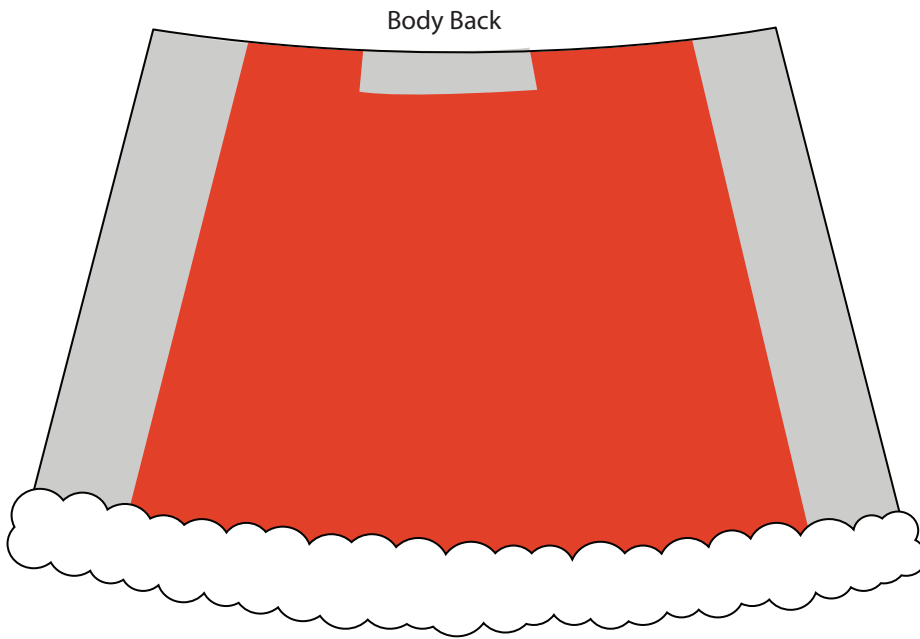


Beard

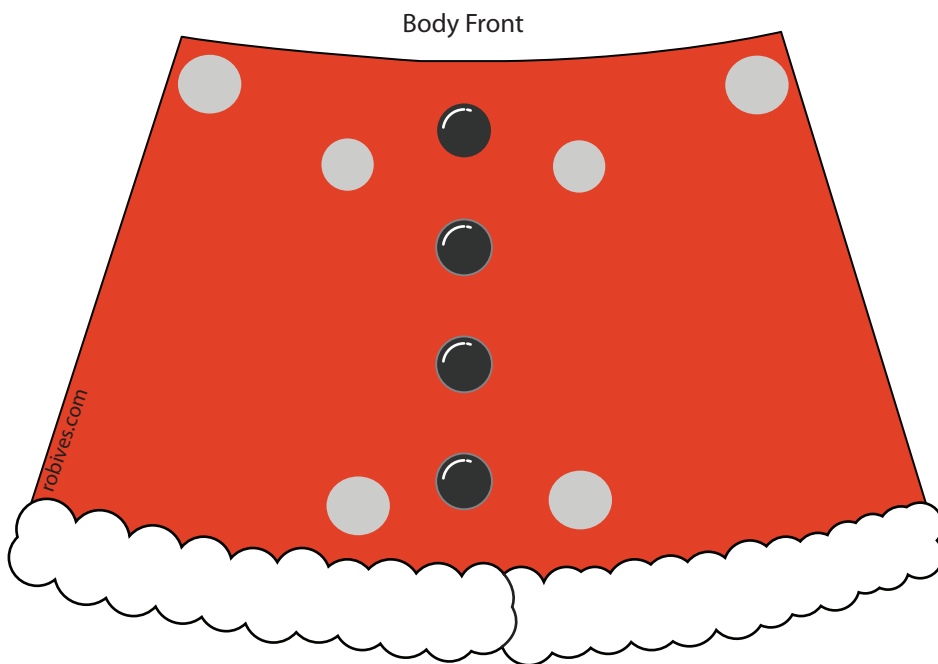


Moustache

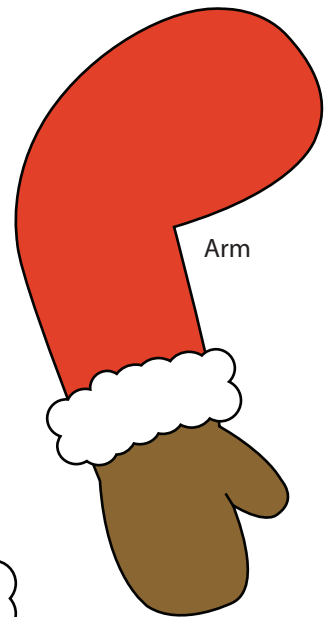
robives
.com



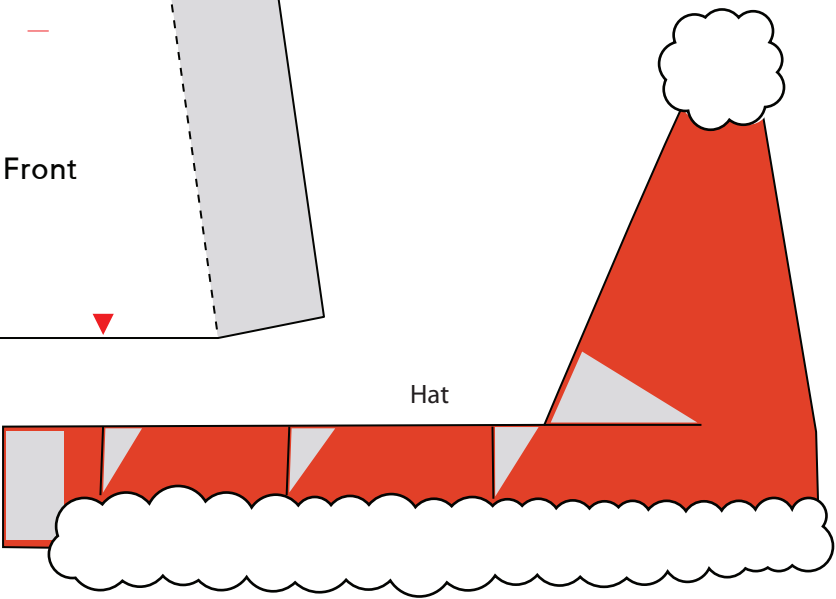
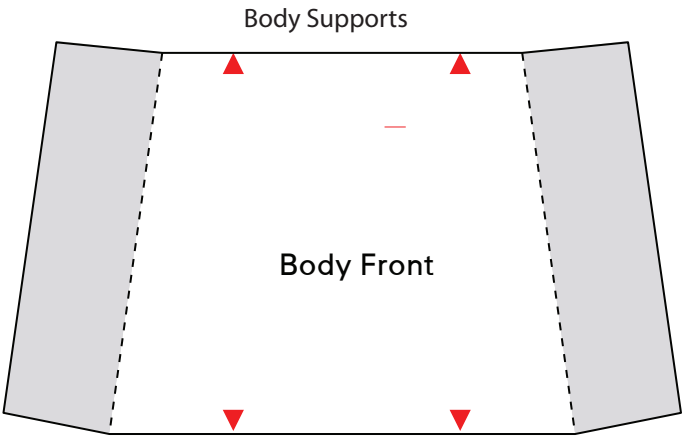
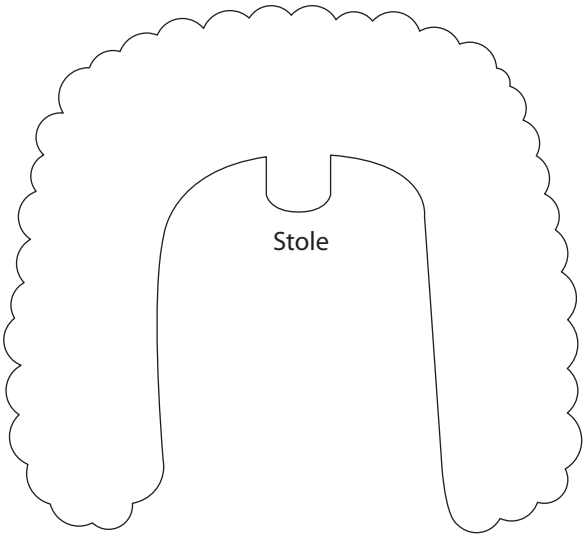
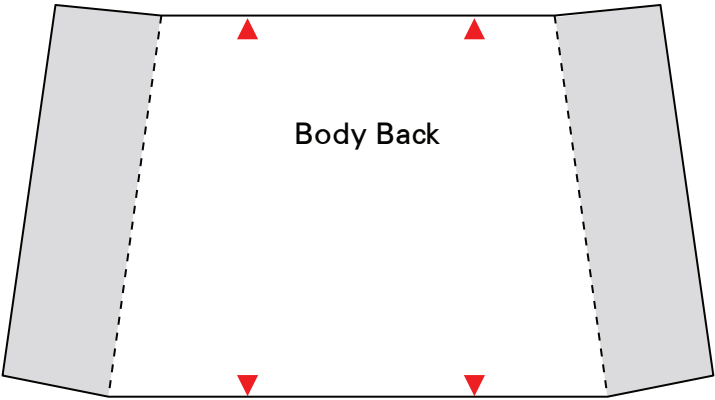
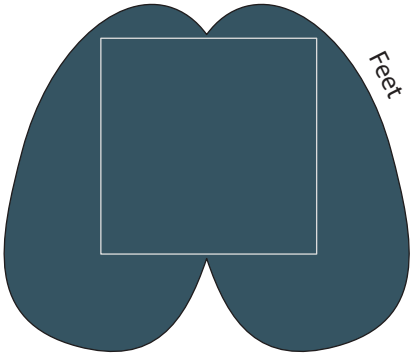
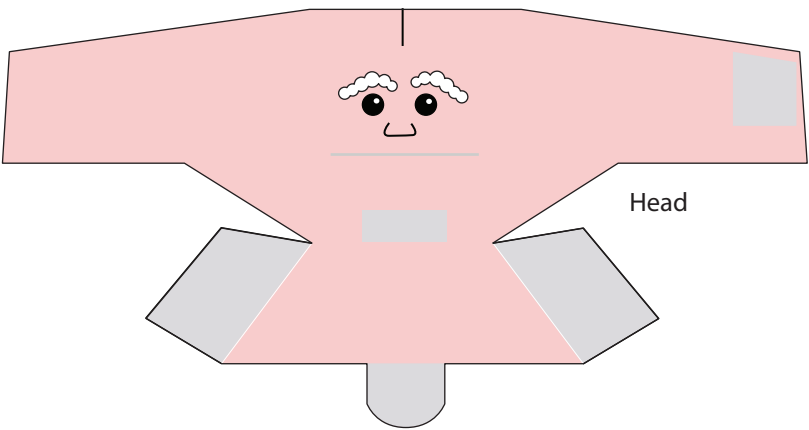
Body Back

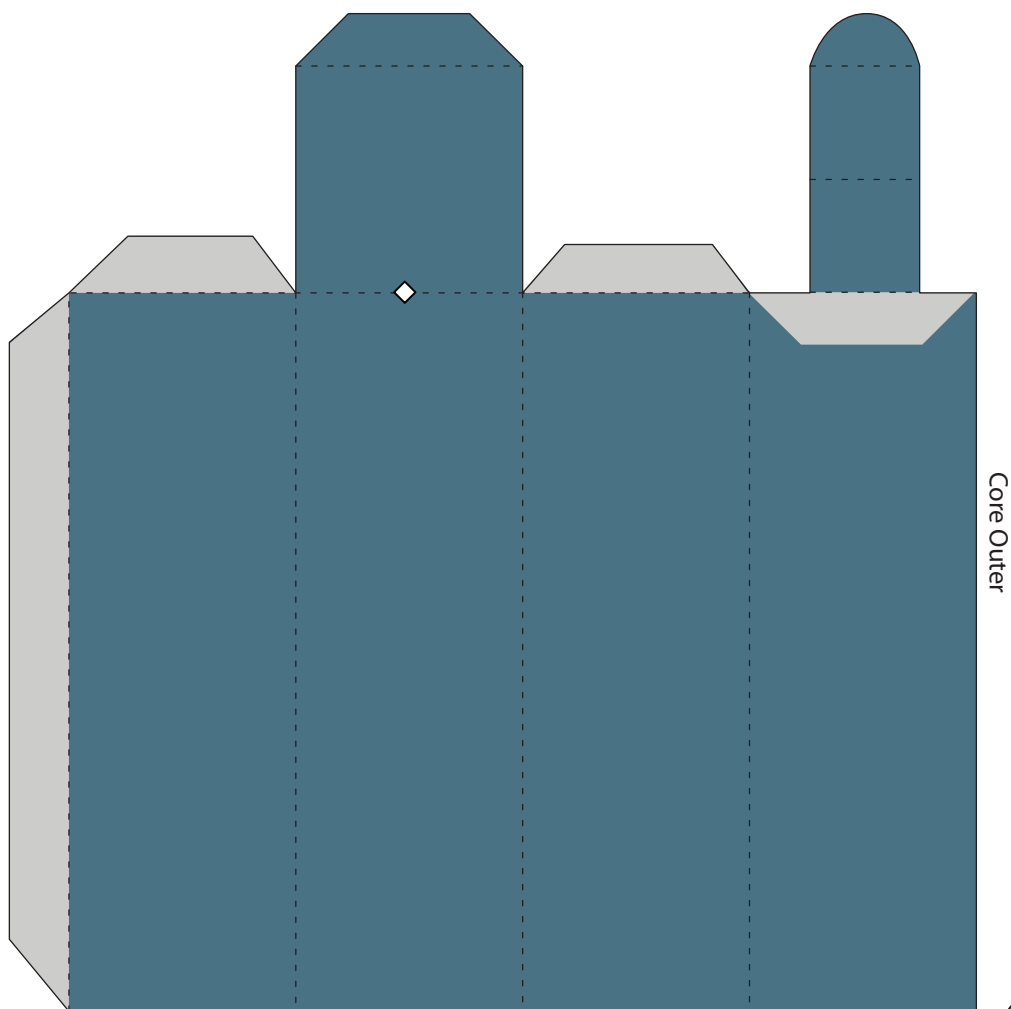


Body Front

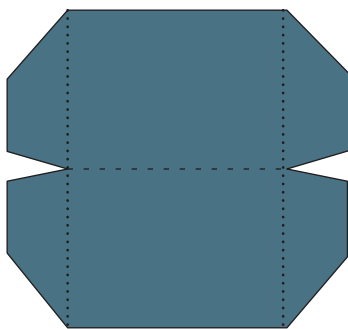


Arm

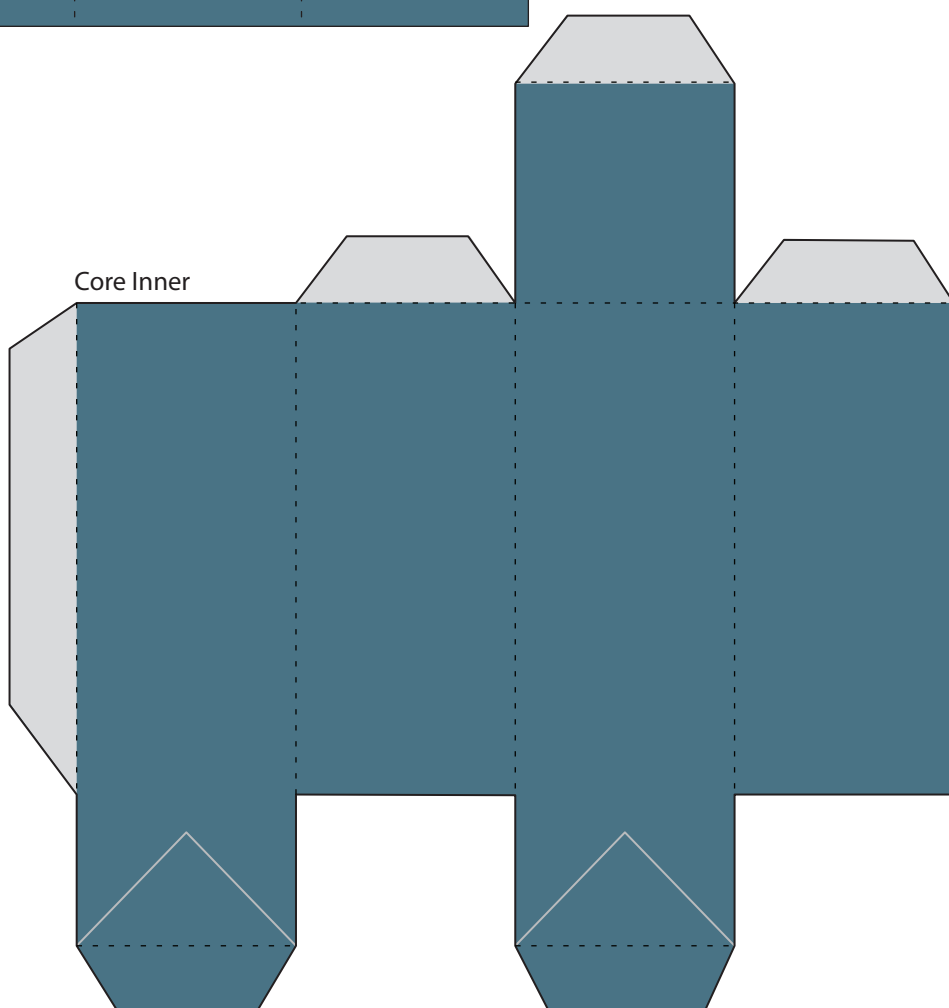




Core Base



Core Inner



Candy Santa.

Print out the parts onto thin card (230 gsm/ 230 micron is ideal)

Score along the dotted lines then carefully cut out the parts.

Follow the instructions for construction at www.robives.com/blog/candysanta