



Instructions

Pattern: 3 sheets

Number of Parts: 9

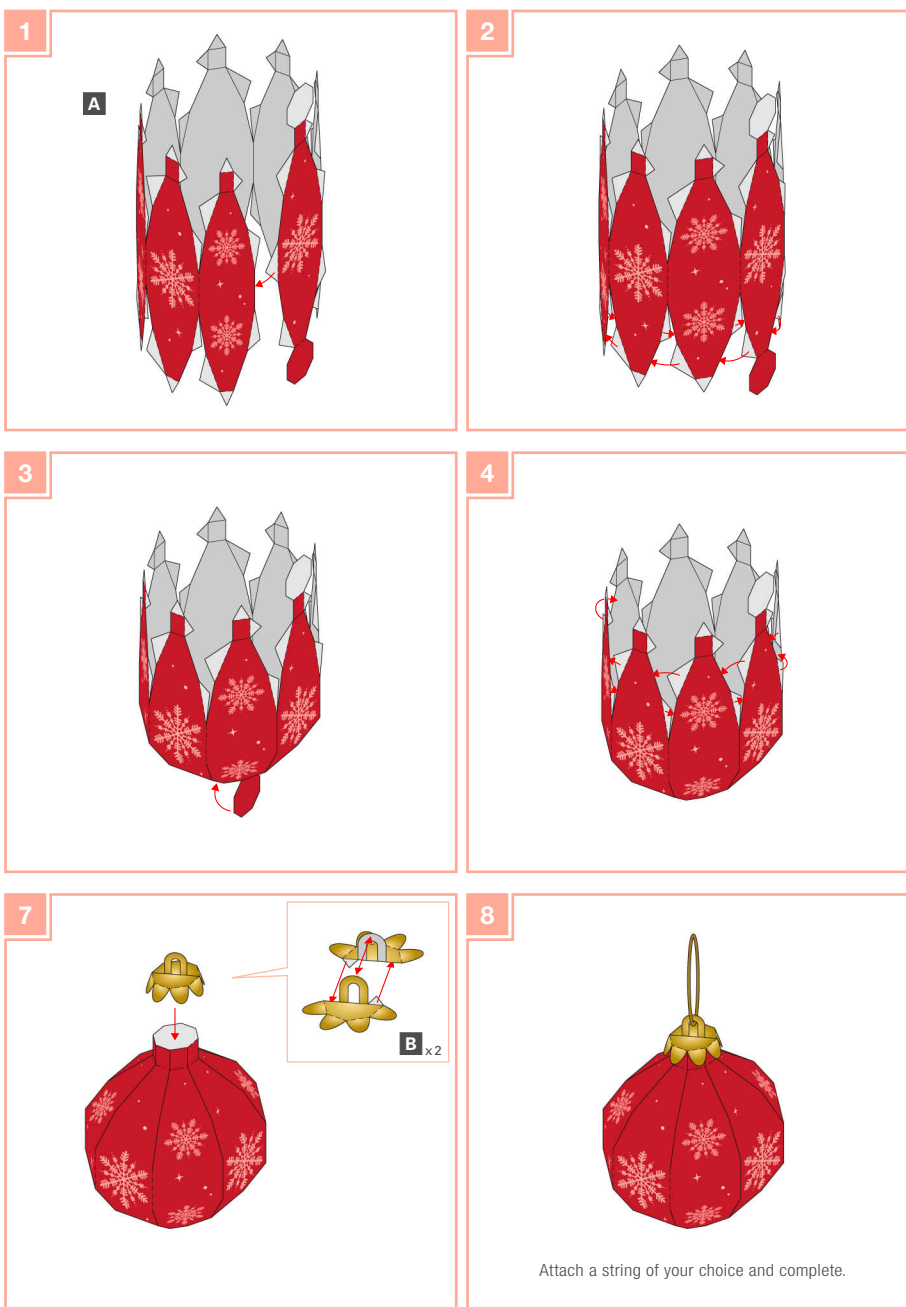
----- Mountain fold
—— Valley fold
—— Scissors line
Cut out

—— Valley fold
—— Cut in line
Glue spot

You will need: Scissors, glue, a ruler, a used ball-point pen

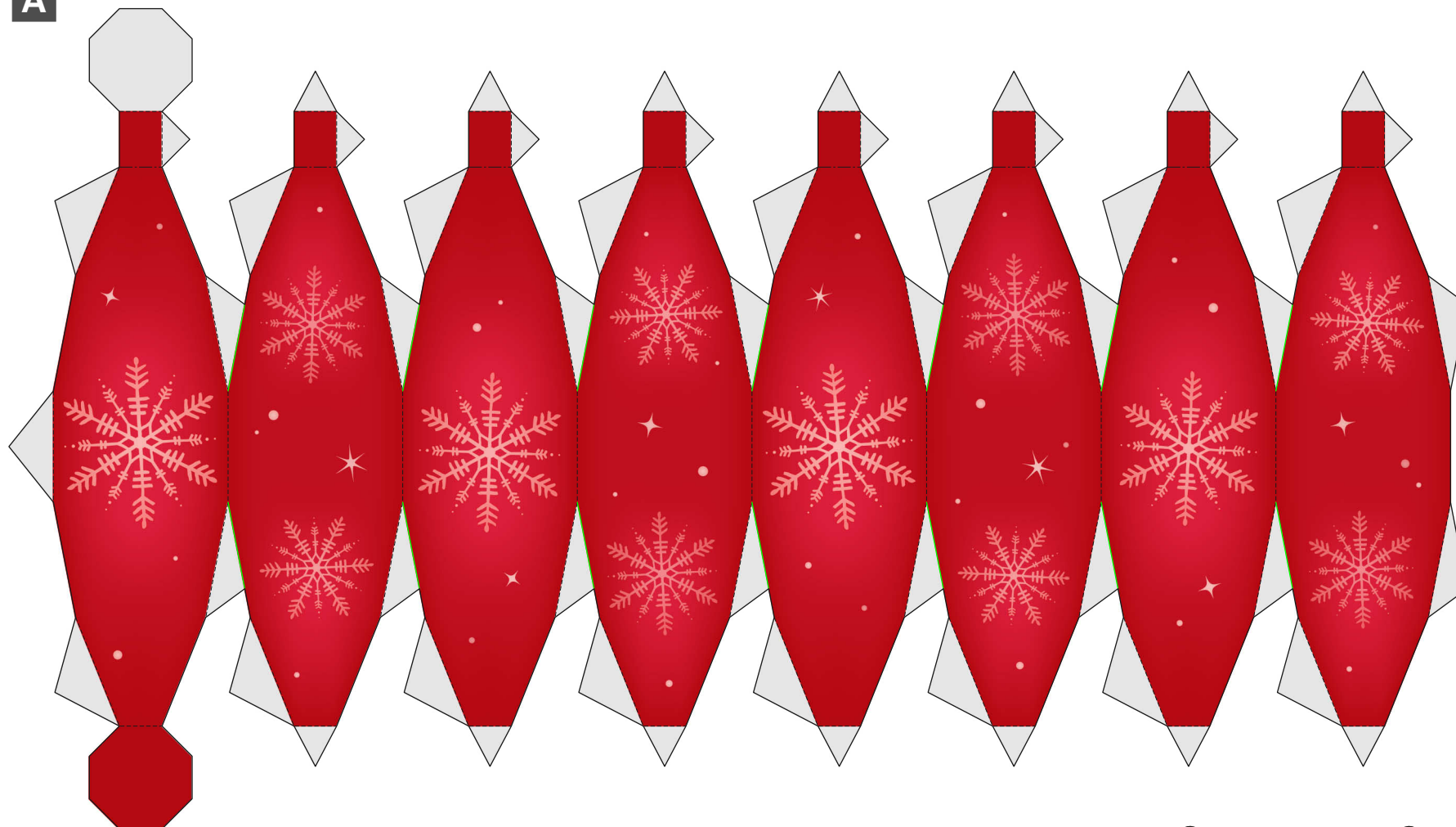
Assembly tip: Trace along the folds with a ruler and a used pen(no-ink) to get a sharper, easier fold.

Caution: Glue, scissors and other tools may be dangerous to young children so be sure to keep them out of the reach of young children.

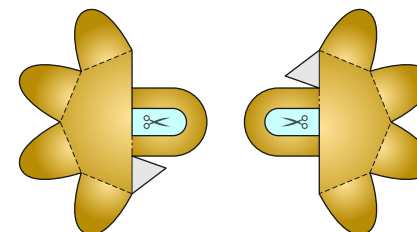


Attach a string of your choice and complete.

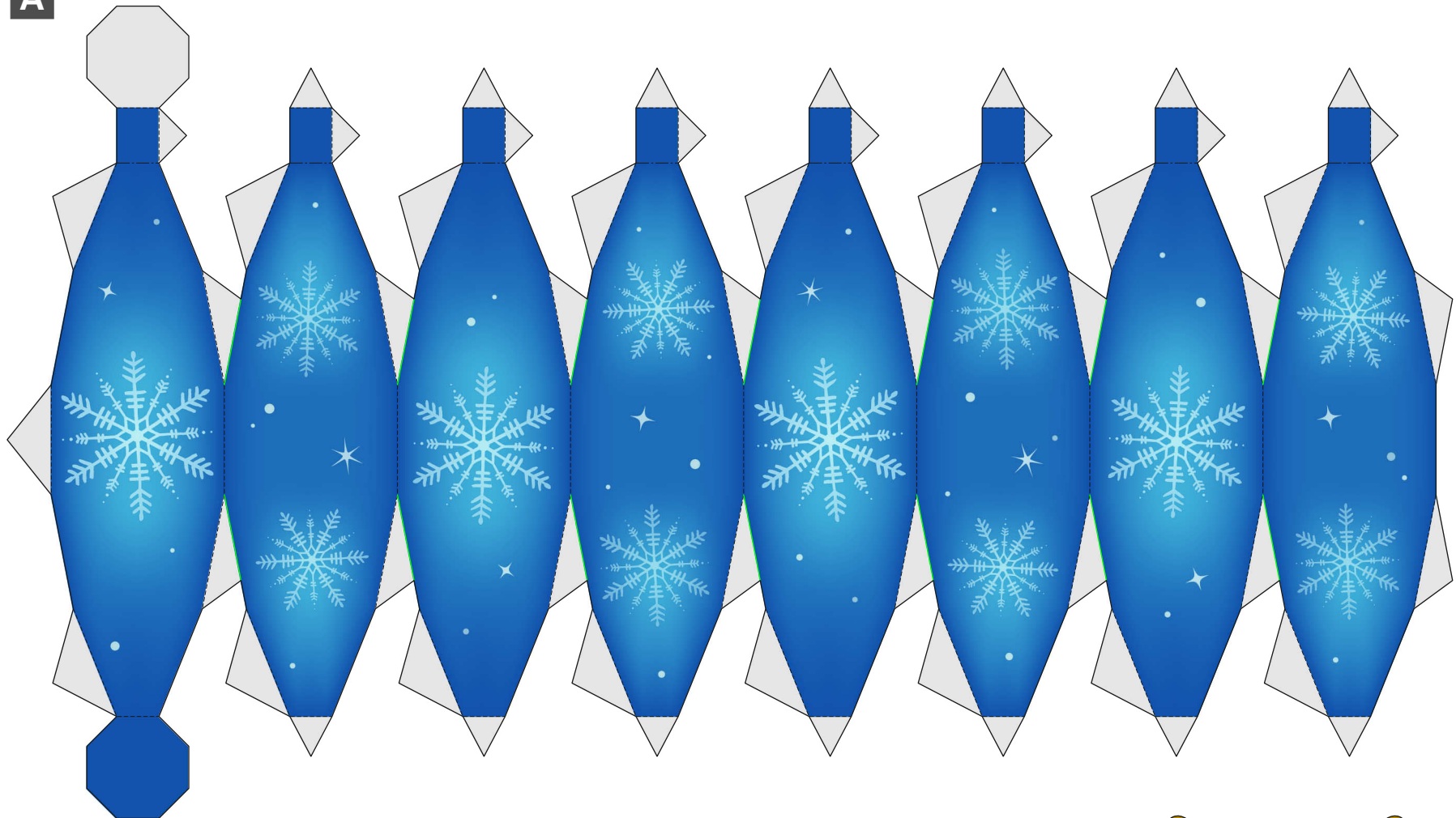
A



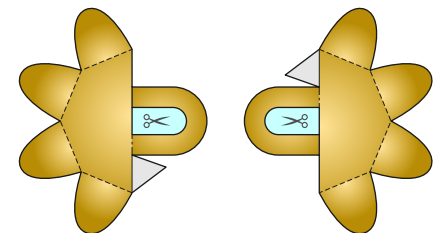
B x2



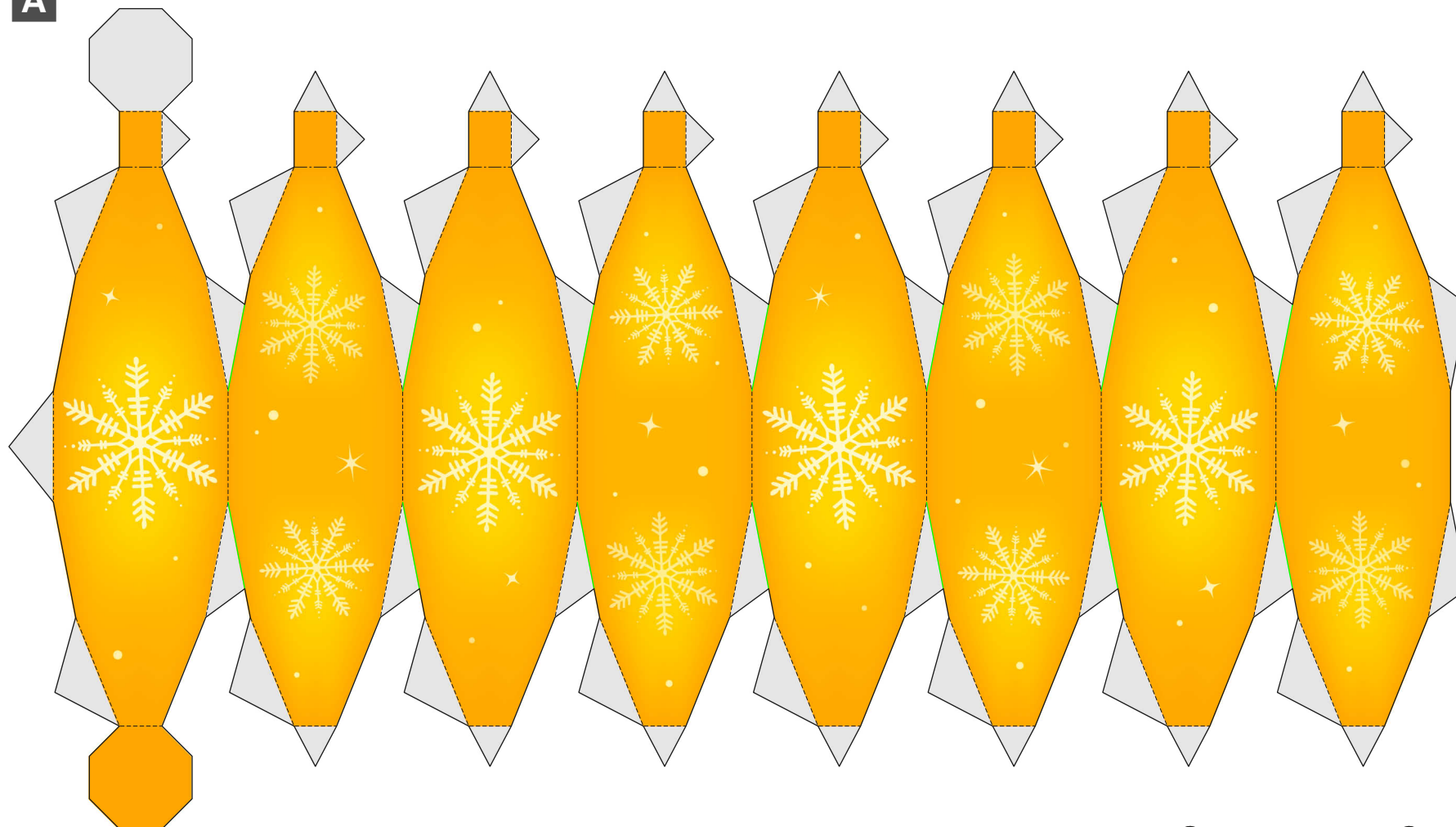
A



B x2



A



B x2

