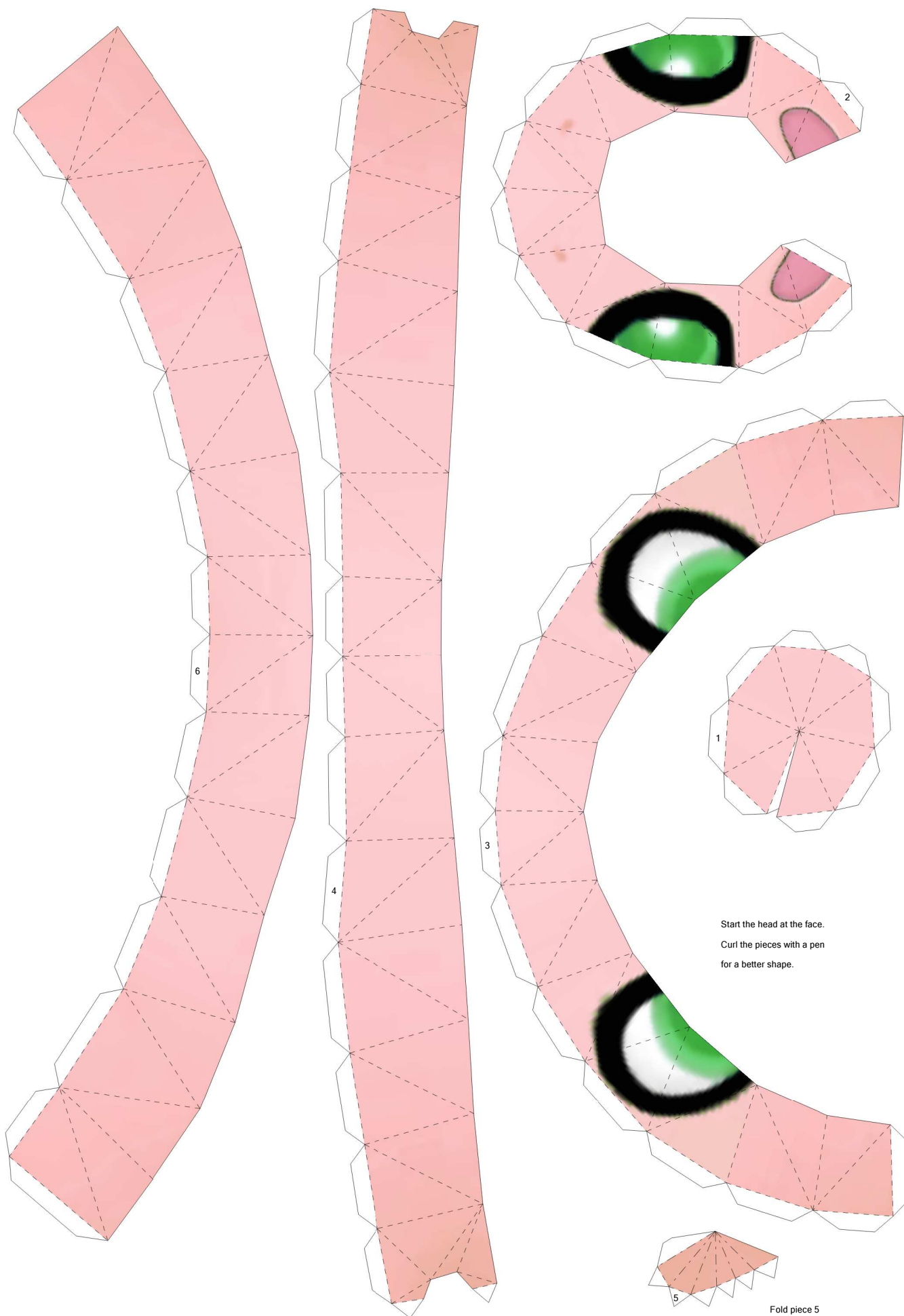




Celebi V2

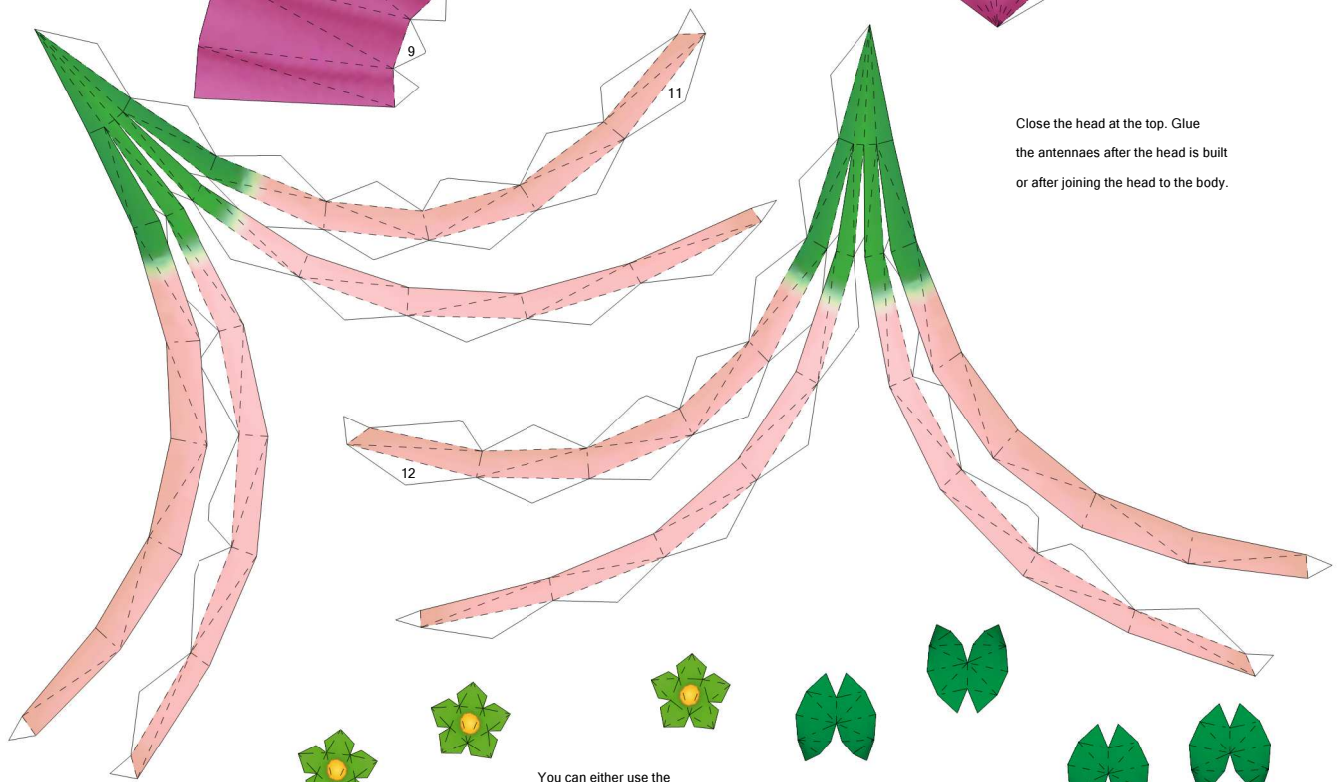
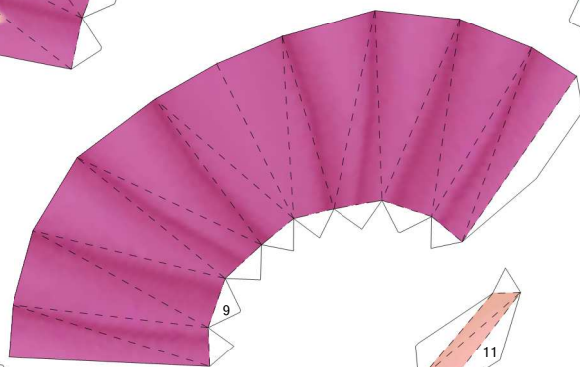
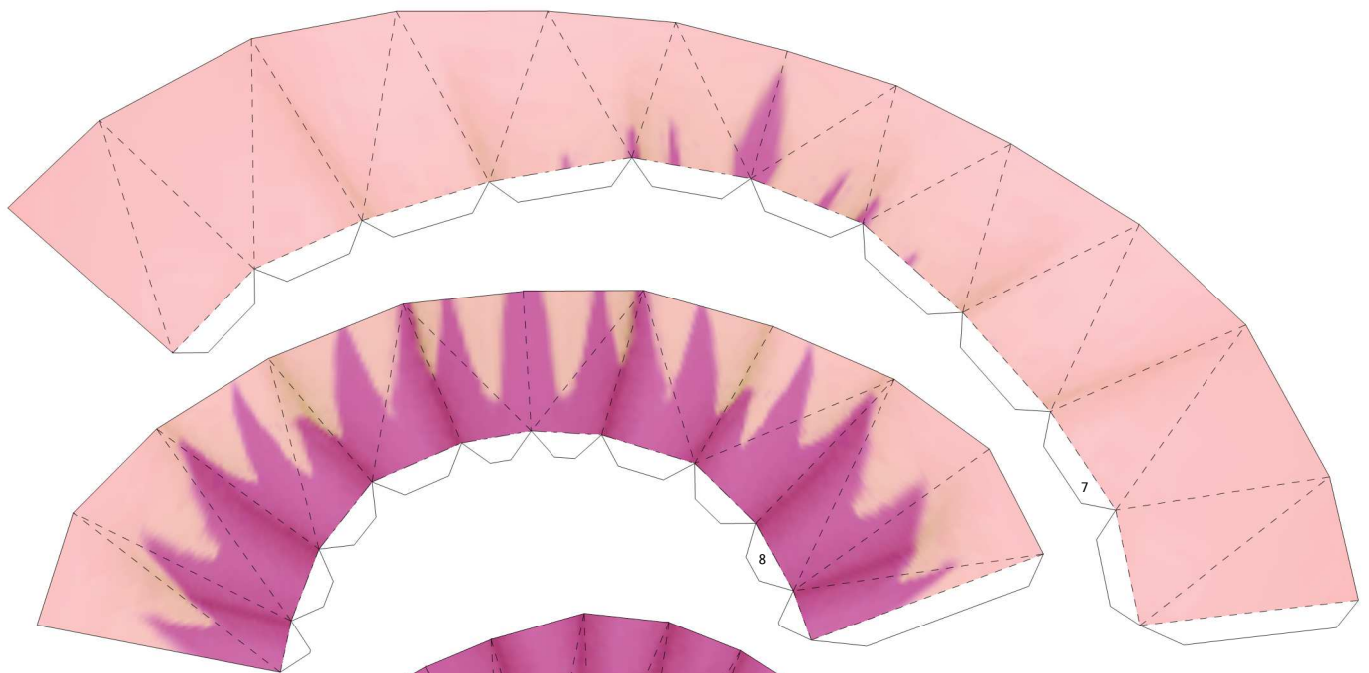
by LuIS

PaperPokés
www.pokemonpapercraft.net

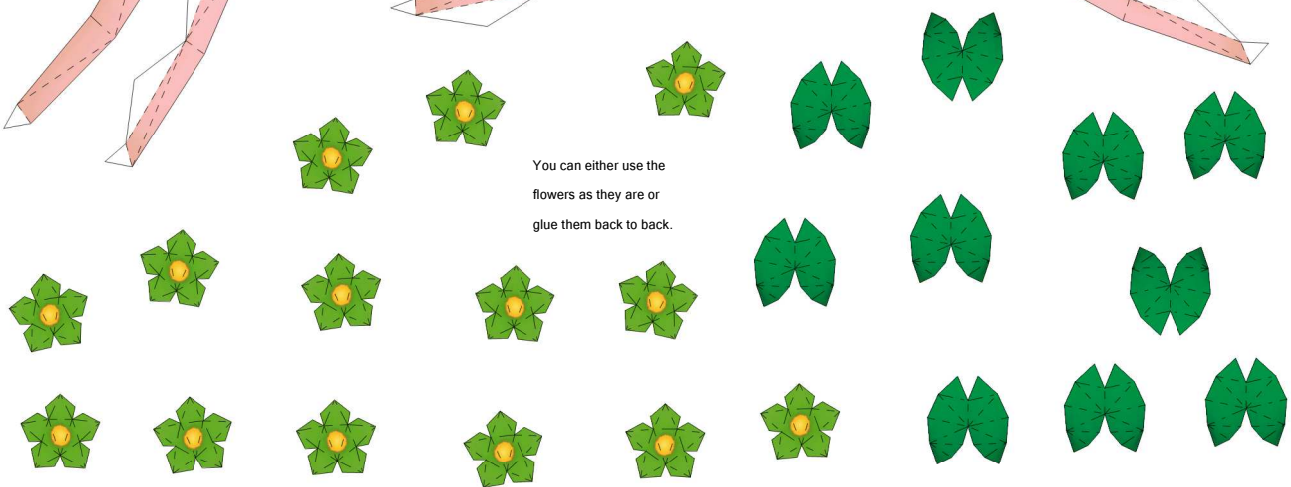


Start the head at the face.
Curl the pieces with a pen
for a better shape.

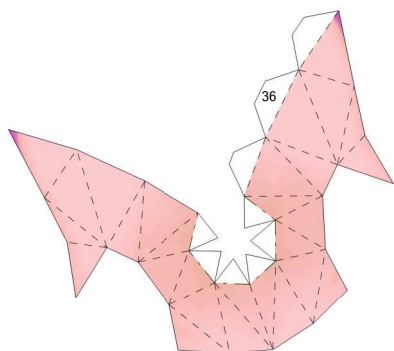
Fold piece 5



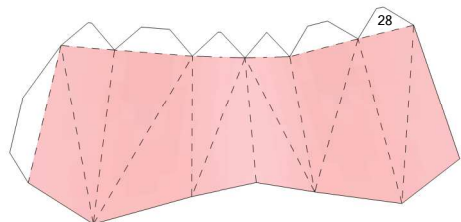
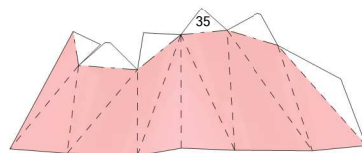
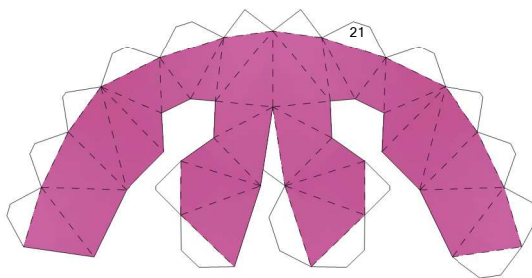
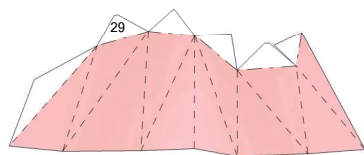
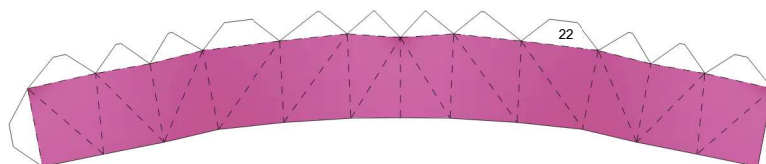
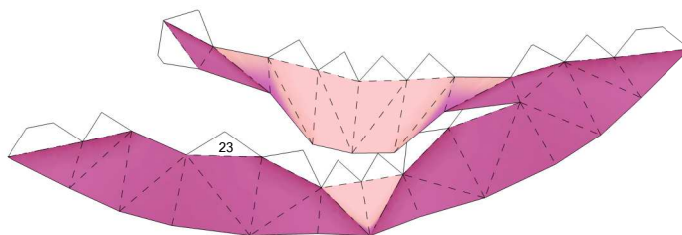
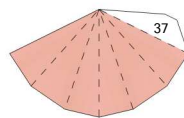
Close the head at the top. Glue the antennae after the head is built or after joining the head to the body.



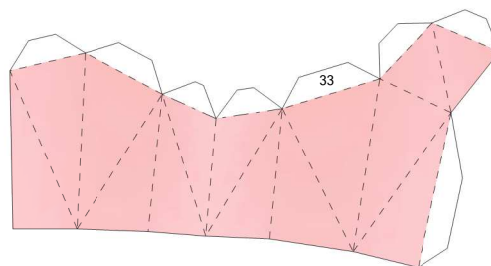
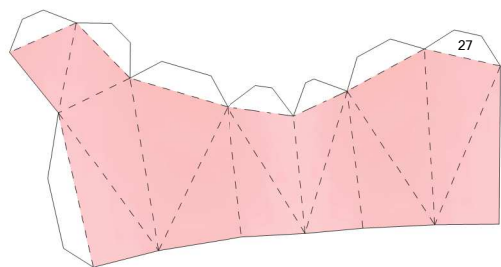
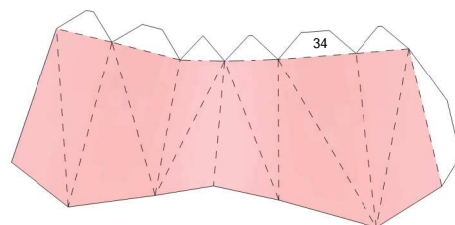
You can either use the flowers as they are or glue them back to back.



Join both arms and piece 36 together to the body.



Reinforce the inside of the connections between the arms and the body and the legs and the body by gluing some scrap paper inside.



It needs weight to stand, even with the base.
Keep the last piece of the body open, and put some weight inside little by little, pop the head without gluing to see if it stands.
When it stands, close the head to the body by putting glue inside the head, where it will connect with the body.
You can glue it to the base, in which case, you might need to weight the base.

