



Bunnelby

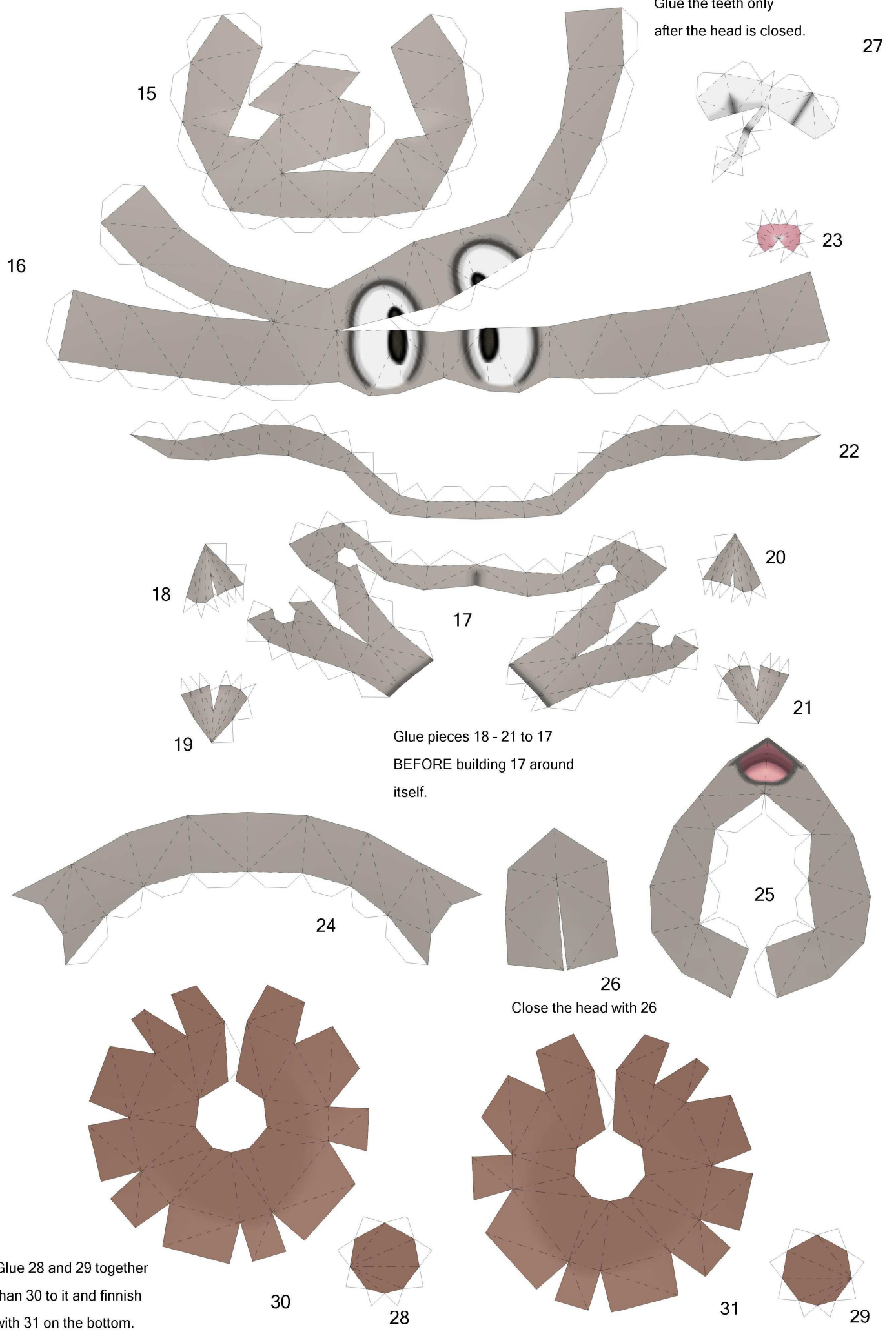
By Brandon

Build by LuIS

PaperPokés
www.pokemonpapercraft.net

Start the ears at the top and build them down. The top is the hardest part of the model, so take your time there.





Glue the teeth only
after the head is closed.

27

23

22

20

21

17

Glue pieces 18 - 21 to 17
BEFORE building 17 around
itself.

25

26

Close the head with 26

24

30

28

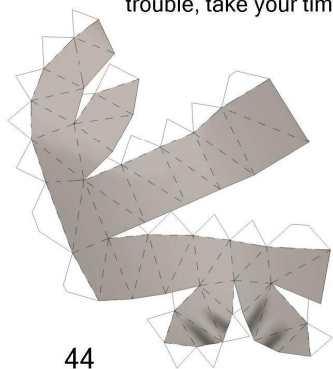
31

29

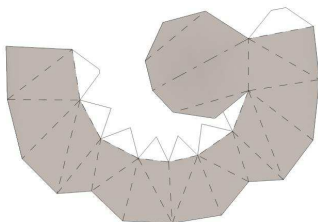
Glue 28 and 29 together
than 30 to it and finish
with 31 on the bottom.

Placing the arms can offer some trouble, take your time there.

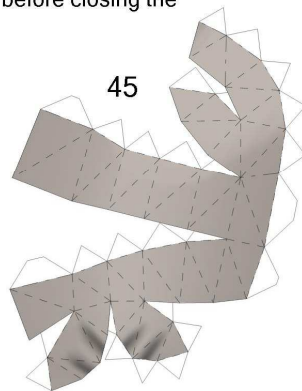
It may take some weight to stand, add it before closing the body.



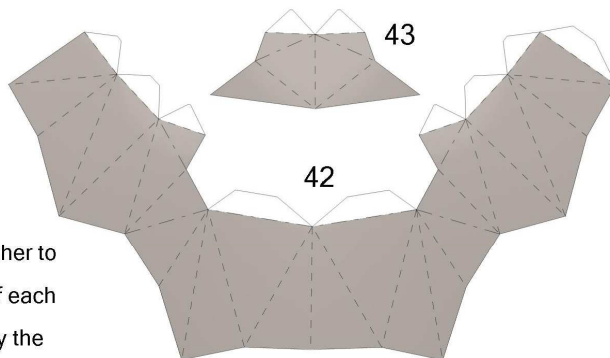
44



46

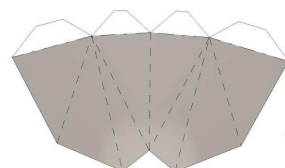


45



43

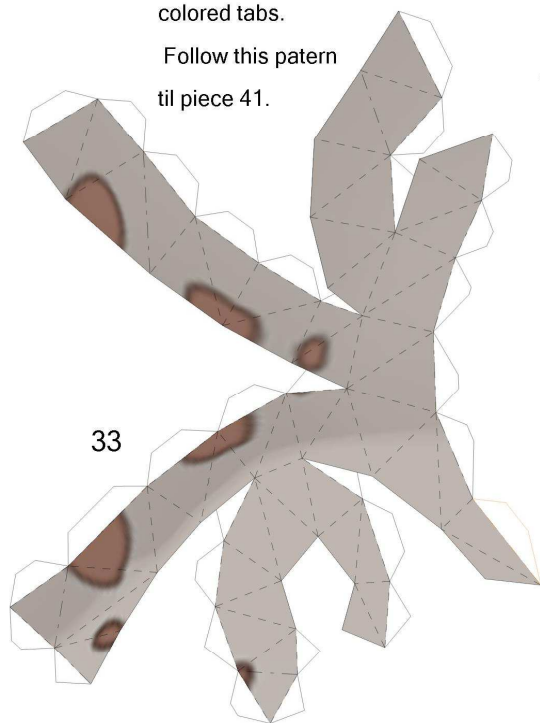
42



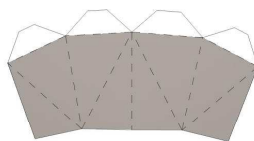
41

Join both legs together to piece 36, one tab of each at a time, starting by the colored tabs.

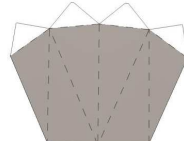
Follow this pattern til piece 41.



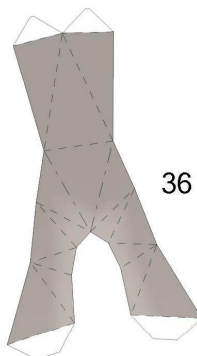
33



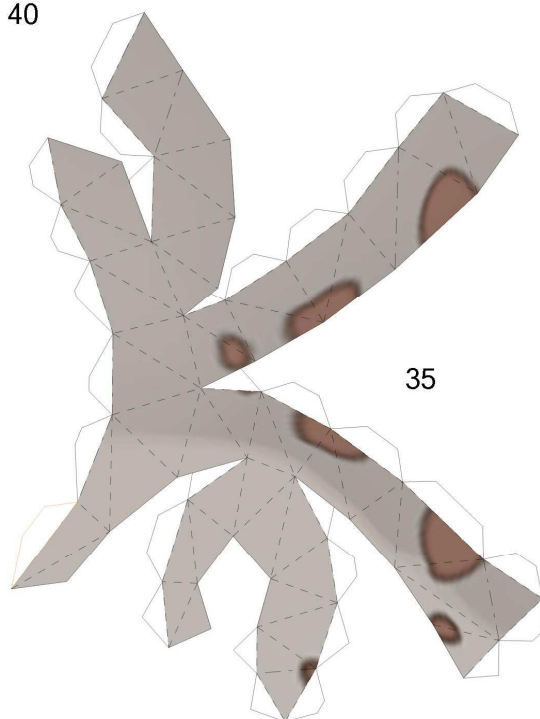
40



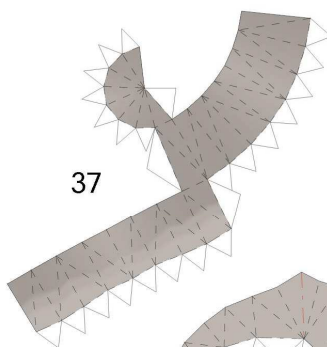
39



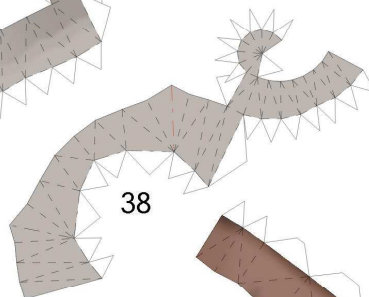
36



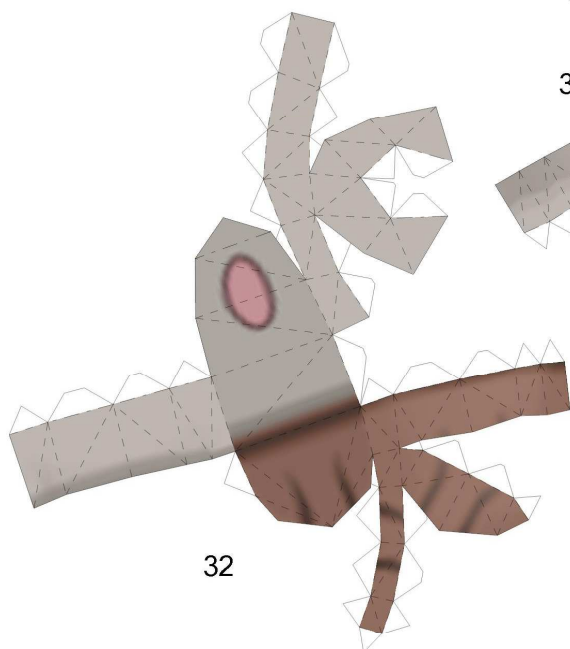
35



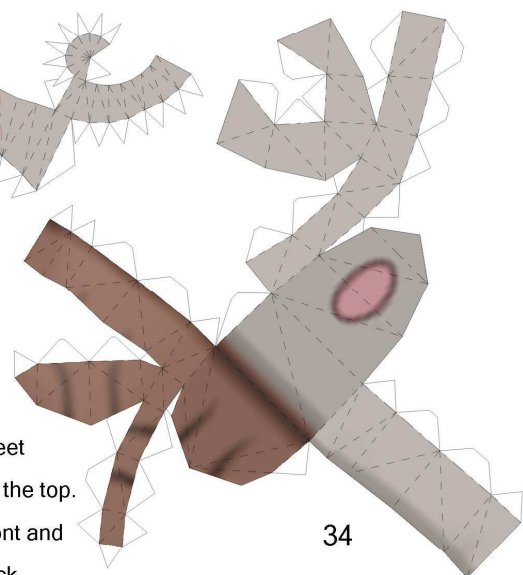
37



38



32



34

Start the body at the feet and build up. Close at the top.
Start the feet at the front and finish them at the back.