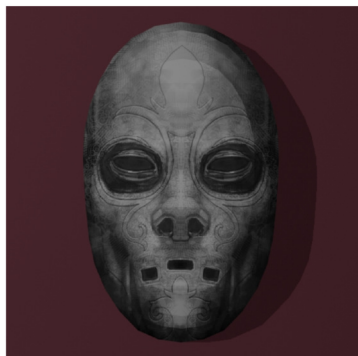
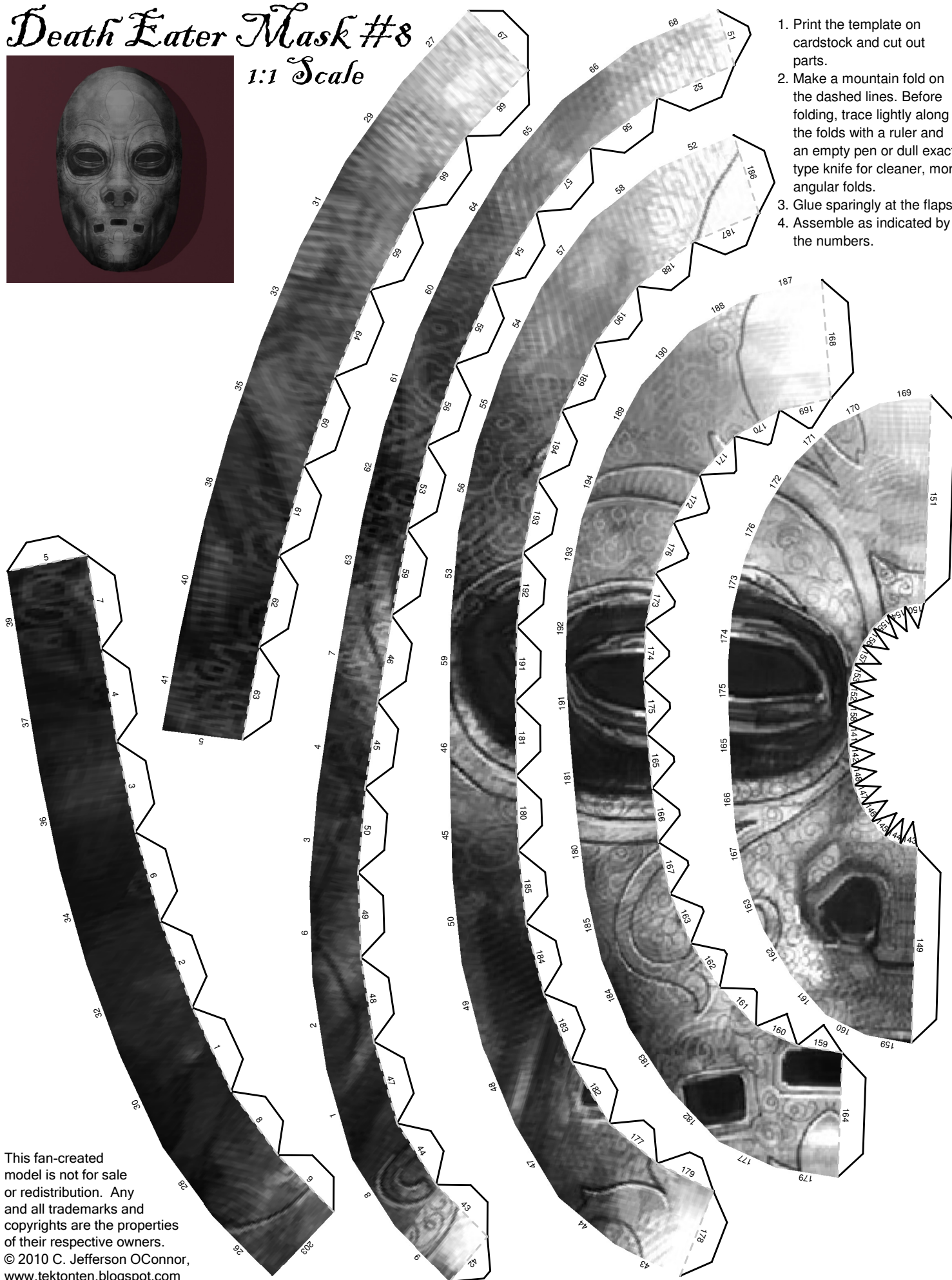


Death Eater Mask #8

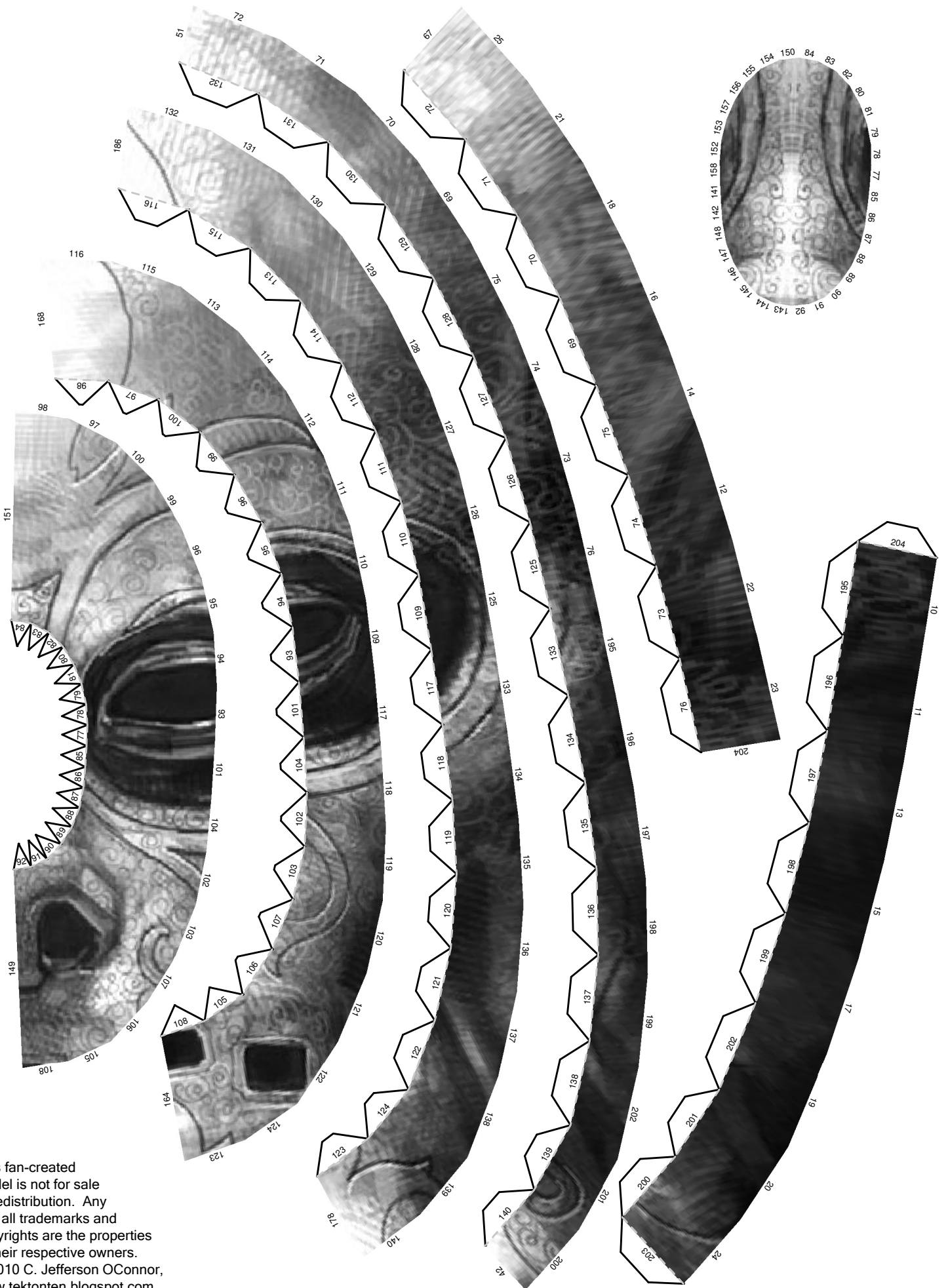
1:1 Scale



1. Print the template on cardstock and cut out parts.
2. Make a mountain fold on the dashed lines. Before folding, trace lightly along the folds with a ruler and an empty pen or dull exacto type knife for cleaner, more angular folds.
3. Glue sparingly at the flaps.
4. Assemble as indicated by the numbers.



This fan-created model is not for sale or redistribution. Any and all trademarks and copyrights are the properties of their respective owners.
© 2010 C. Jefferson OConnor,
www.tektonten.blogspot.com



This fan-created model is not for sale or redistribution. Any and all trademarks and copyrights are the properties of their respective owners.
 © 2010 C. Jefferson OConnor,
www.tektonten.blogspot.com



This fan-created model is not for sale or redistribution. Any and all trademarks and copyrights are the properties of their respective owners.
 © 2010 C. Jefferson OConnor,
www.tektonten.blogspot.com

OPTIONAL BACK