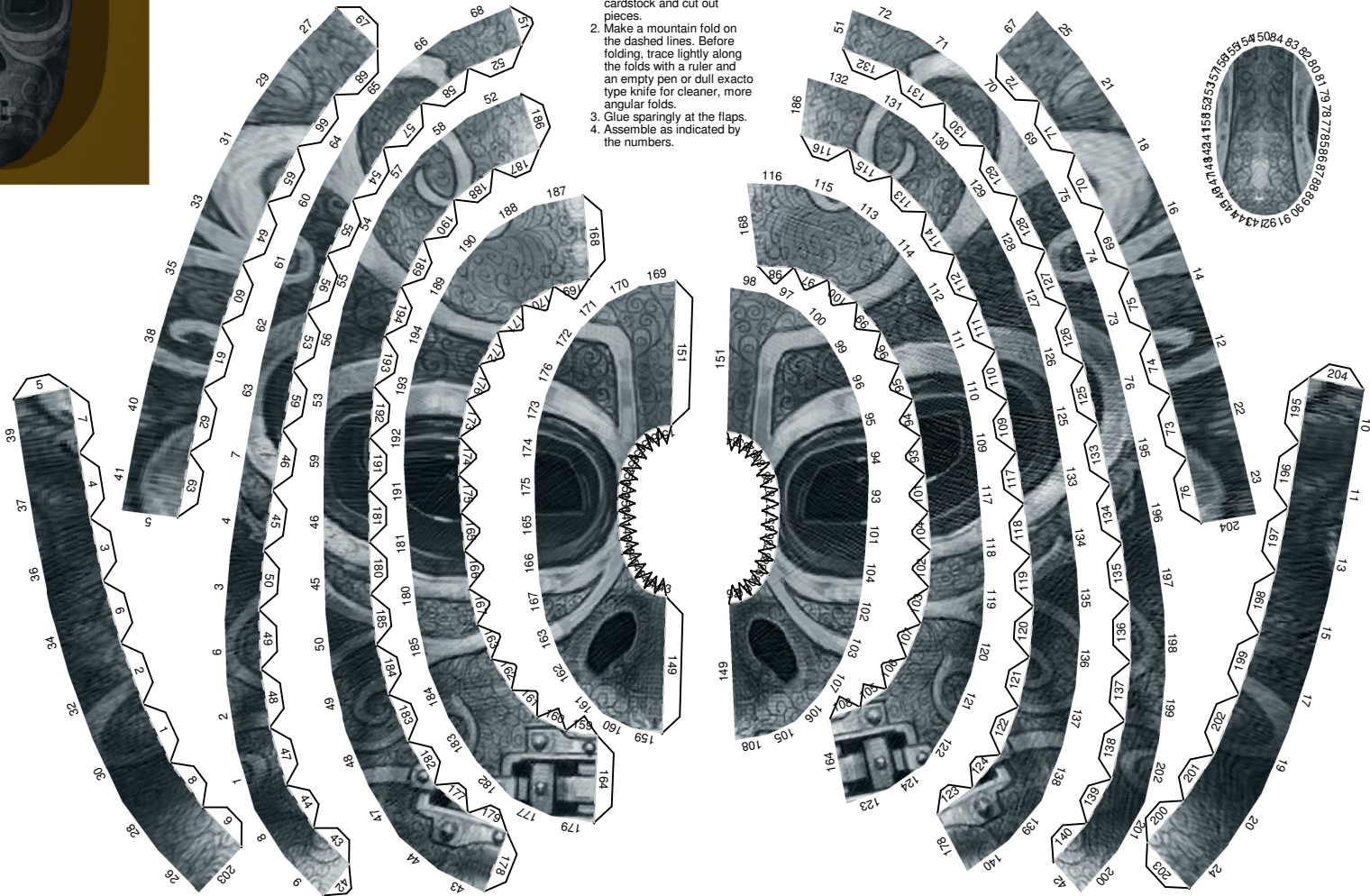


# Death Eater Mask #7

## 1:2 Scale



1. Print the template on cardstock and cut out pieces.
2. Make a mountain fold on the dashed lines. Before folding, trace lightly along the folds with a ruler and an empty pen or dull exacto type knife for cleaner, more angular folds.
3. Glue sparingly at the flaps.
4. Assemble as indicated by the numbers.





OPTIONAL BACK