

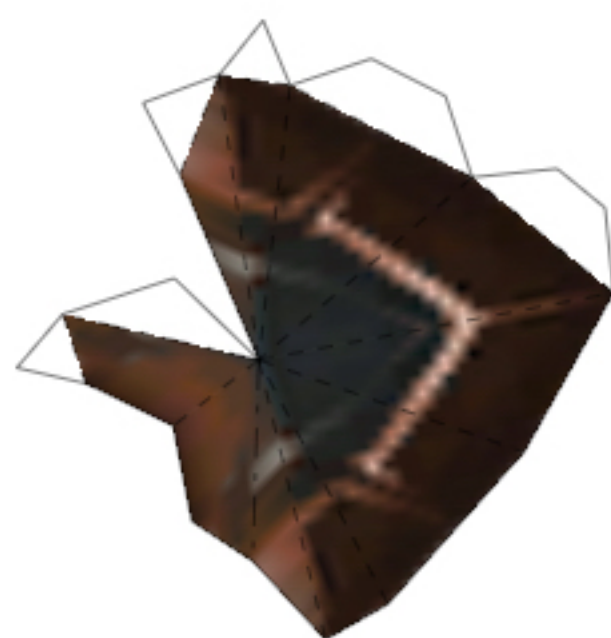


DEATH KNIGHT RUNESWORD

BY BARBARIAN



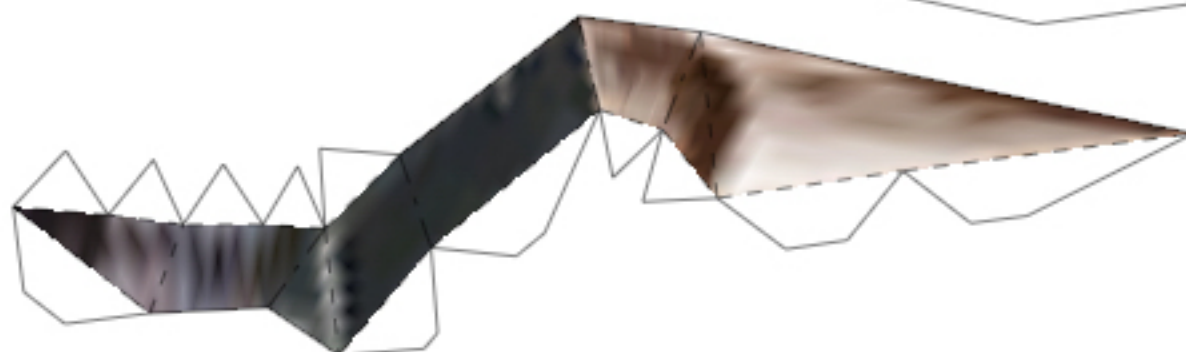
LEFT



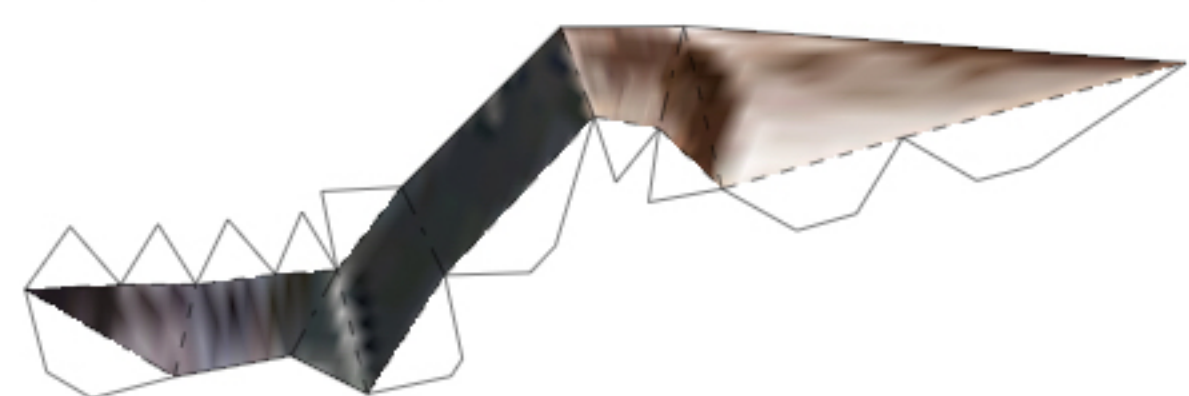
RIGHT



RIGHT



LEFT



RIGHT

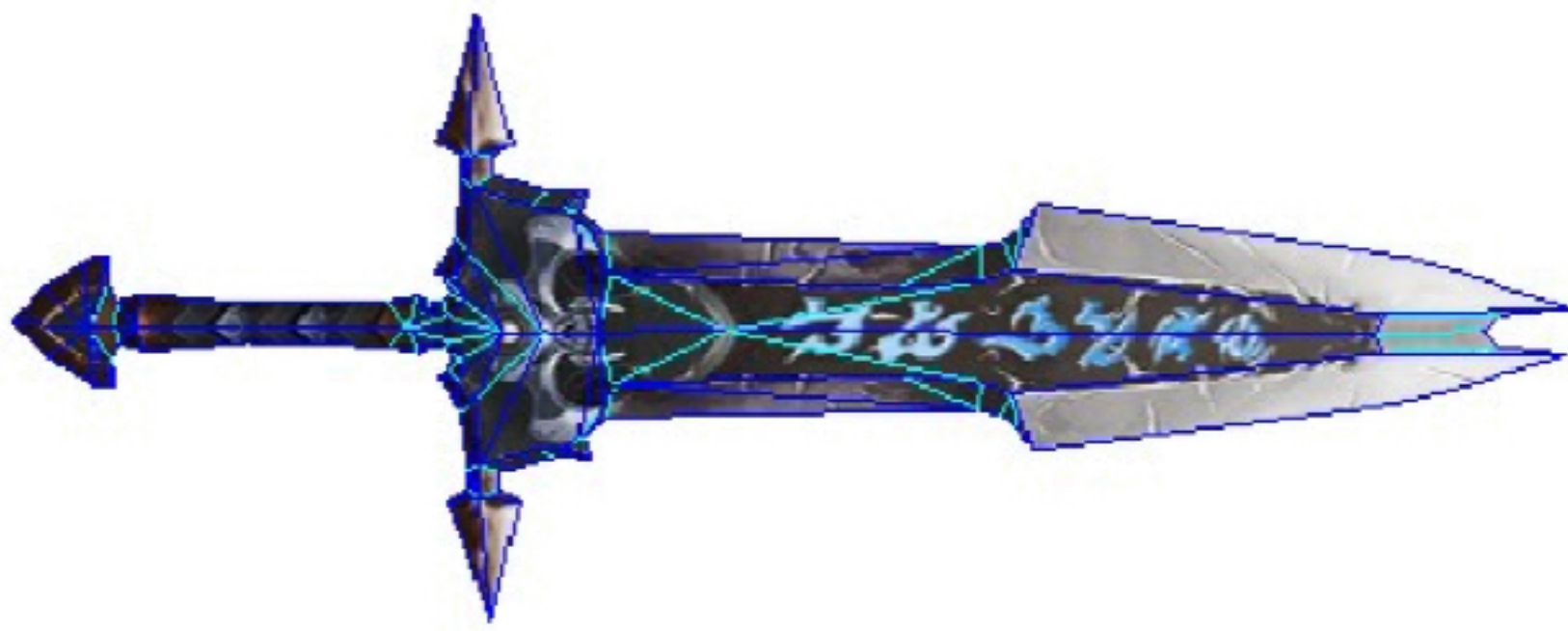




LEFT

GUIDELINES:

CONSIDER THE DEFAULT MODEL VIEW
IN THE 3D WINDOW AS LEFT SIDE.



LEAVE THE POMMEL (THE HILT'S END) TO BE
THE LAST PIECE TO BUILD.

THIS WAY YOU CAN INSERT A WOODEN STICK
OR A ROLLED PAPER INSIDE THE SWORD'S BODY,
MAKING THE MODEL MORE STABLE.