



SHEILA'S  
PAPERMODELS

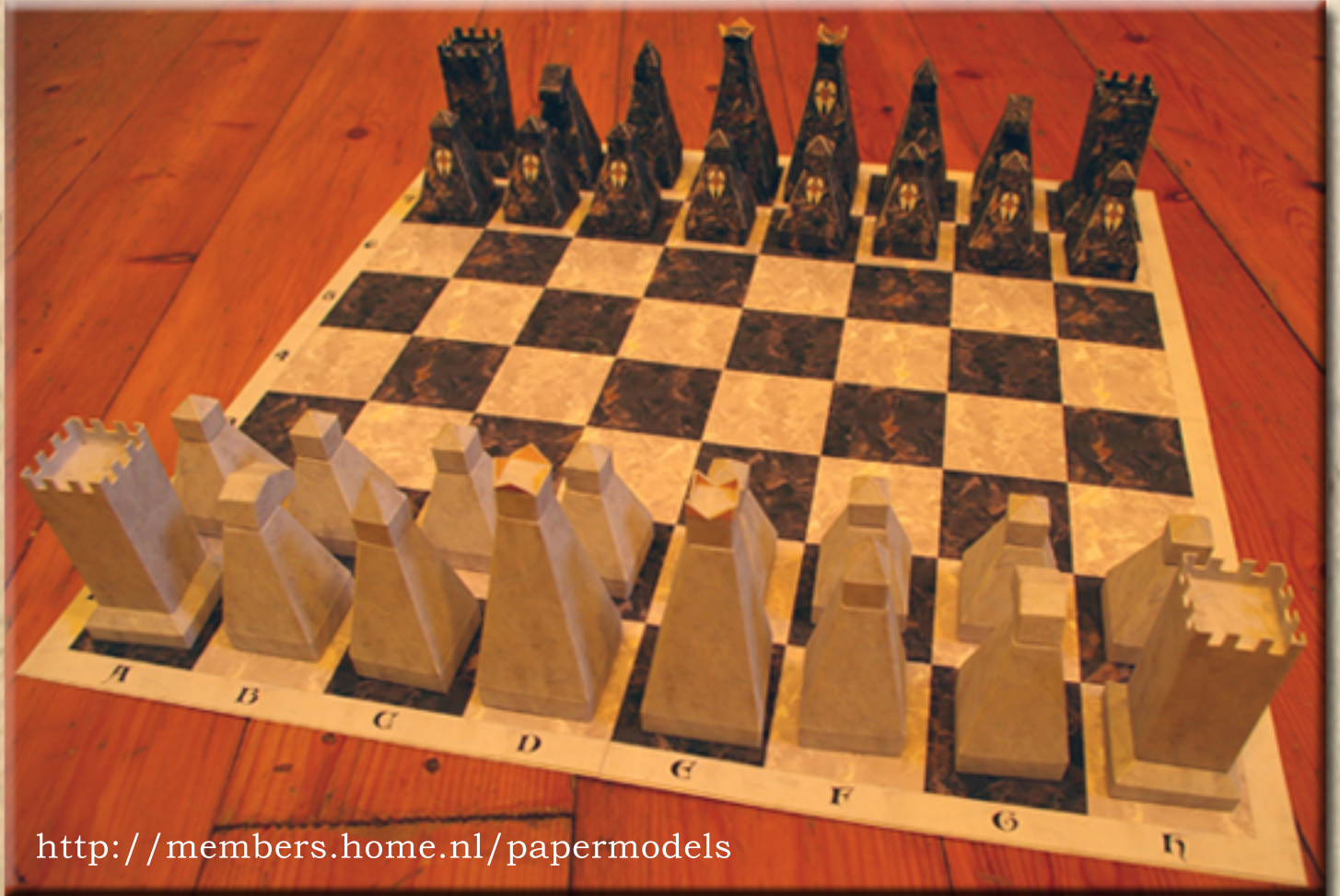
FREE!

# CHESSPIECES WITH BOARD COMPLETE SET

designed by Sheila Mertens

Size 38x38 cm

Assembly instructions included



<http://members.home.nl/papermodels>

Also available at

**KARTONMODELL**  **FORUM**  
Frank-Michael Goldmann • Wolfgang Mühlbauer • Thomas Pleiner

## Chesspieces w. Board - assembly instructions

Before you begin:

- Read the instructions entirely before assembly. Get to know the different parts of the model. Study the photographs before you proceed. Dry-fit every part prior to gluing it into position.

- Scoringlines have been drawn on the outside of every piece of the model (they are the dotted lines), thus keeping the visible surface of the model 'clean'. Also note that all gluetabs have textures on them too, thus reducing the risk of 'white edges' after gluing pieces in place. ALWAYS APPLY SCORINGLINES TO EVERY PIECE PRIOR TO CUTTING IT OUT.

- double check that ALL foldinglines are scored; especially the head of the knight, which is a little tricky.

**Tip:** You may consider making the individual figures a little bit heavier by gluing small metal rings, or coins, inside their base prior to closing their bodies. Filling the bodies with dry rice is also an option.

Enjoy!

*Model created & designed by Sheila Mertens 2006.  
Free for personal, non-commercial use only.*

--- assembly instructions ---

1. Print all sheets on 160-180 grams A4 paper (or equivalent).

2. Starting with the pawns, score, cut out and fold the 'bodies' as shown in image 01. First, close the base of the body as shown in image 03. Glue the 'baseplate' with the printed side down, inside the body (see also image 10). The heads are assembled as shown in image 02. Now, close the sides of the body, gluing one vertical tab at a time, see image 04 for result. Finally glue the head to the body.

Note: all pieces except the rooks have basically the same shape and method of construction as the pawn.

3. Score, cut out and fold the upper body of the rook as shown in image 05. Fold back and glue the upper part with the battlements to the inside of the body (but don't glue the tabs too, see image 05). Wait until the glue is dry, then carefully cut out the battlements.

Assemble the upper part of the rook as shown in image 07 - one small square goes to the bottom, the other small square goes inside the battlements, printed side facing upward.

Score, cut out and fold the base of the rook as shown in image 06. First close the base, as with the pawn (image 03), then glue the baseplate inside, then close the sheer edges of the top of the base. Finally, glue the upper part of the rook to its base (image 07).

4. Assemble the body of the knight just as you assembled the body of the pawn. The head of the knight is assembled as shown in images 08 and 09.

5. Assembling the bishop is similar to the pawn.

6. The bodies of the king and queen are assembled the same way as the pawn. Their heads are simple, little cubes. Their crowns are assembled as shown in image 11 - this is the king's crown, the queen's crown is a little different. See image 12 for the endresult.

7. Finally, cut out and assemble the four pieces of the board. You could glue the entire board on thick cardboard, or make a fold-up model. Anyway, the easiest way to construct the board, is to apply long strips of spare paper to the underside of the board, gluing the four parts together.

\* \* \*



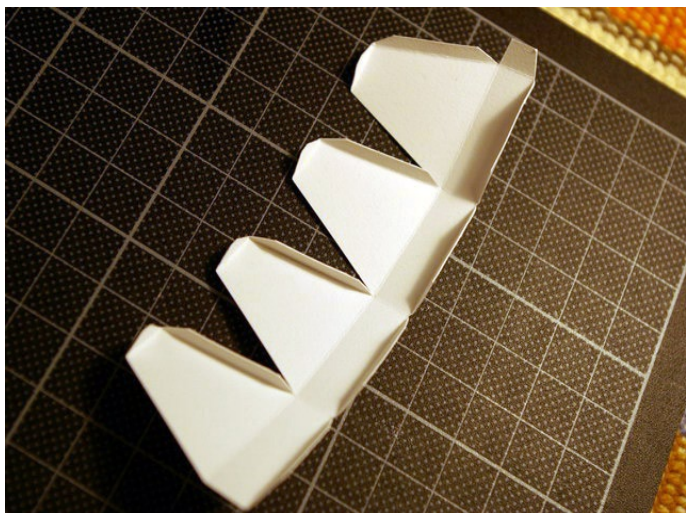


image 01

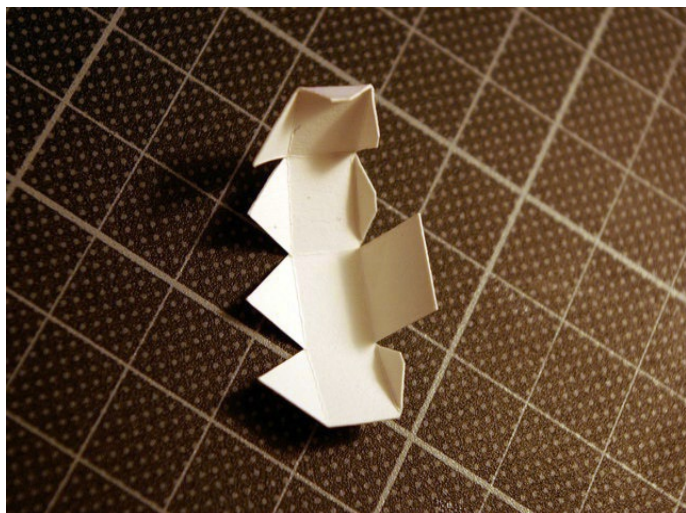


image 02

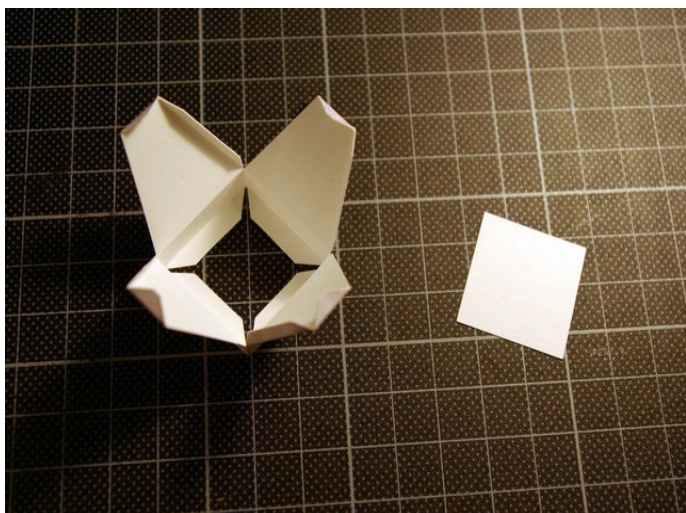


image 03



image 04



image 05

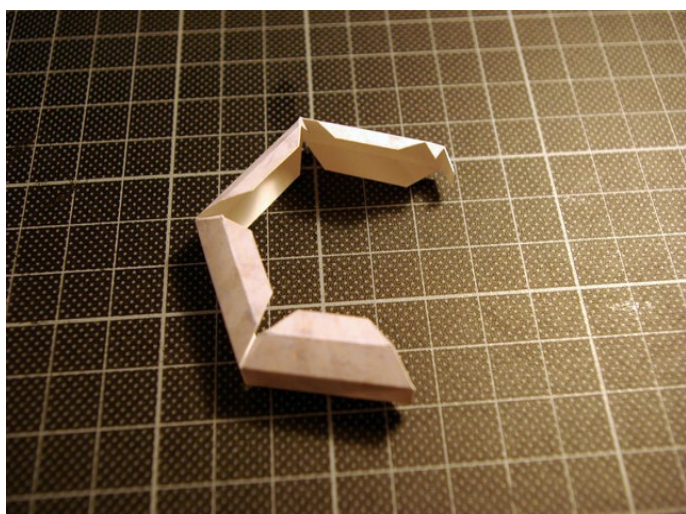


image 06



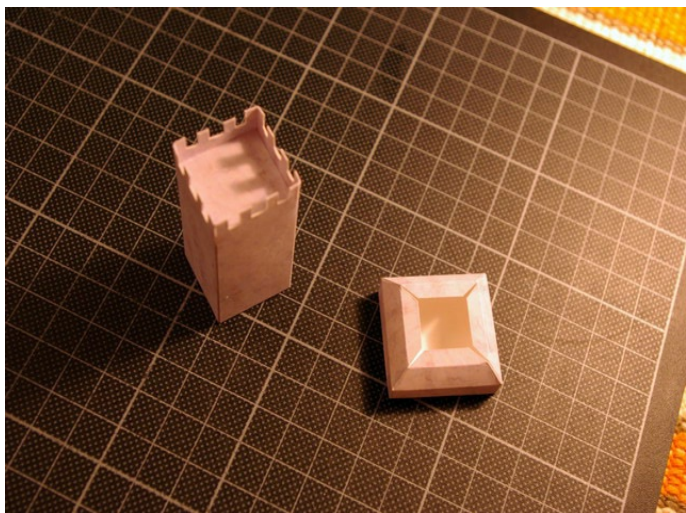


image 07

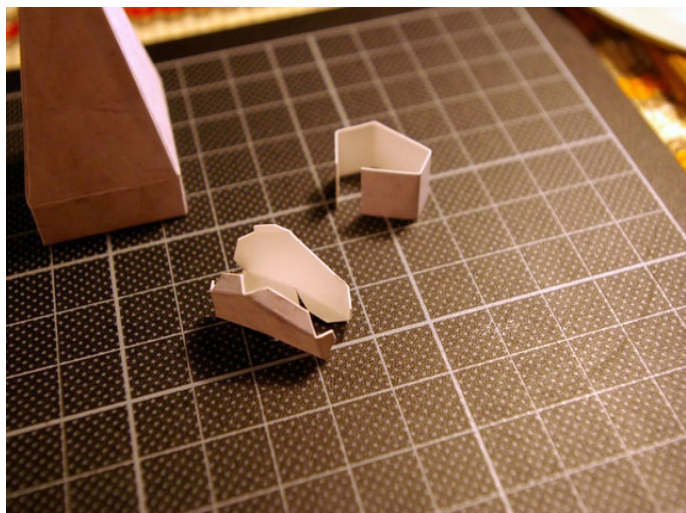


image 08

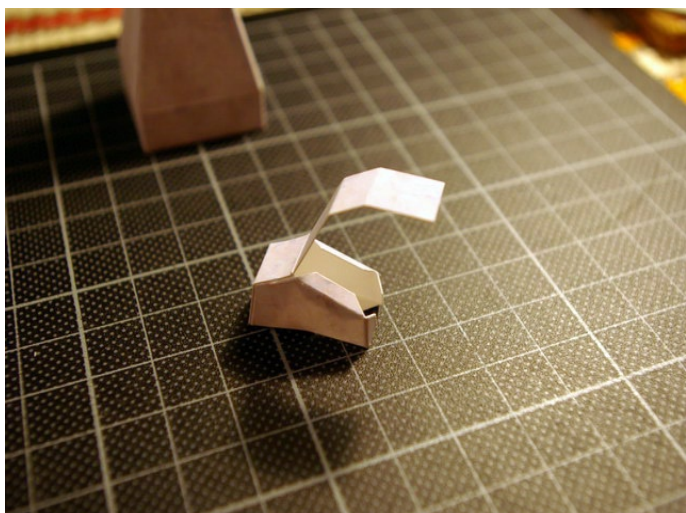


image 09

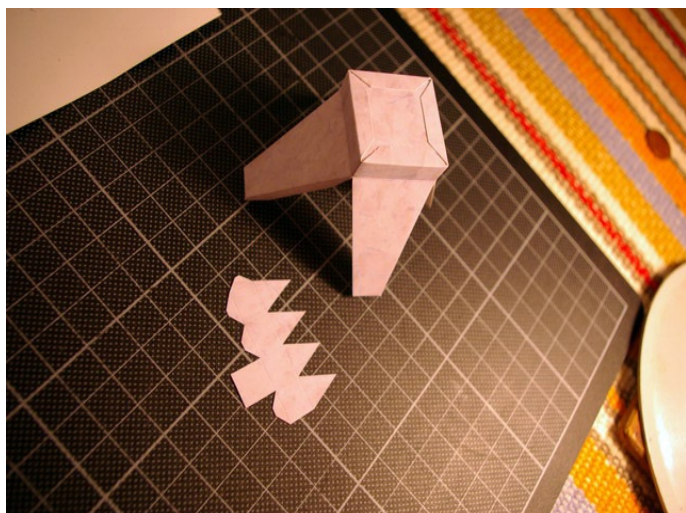


image 10

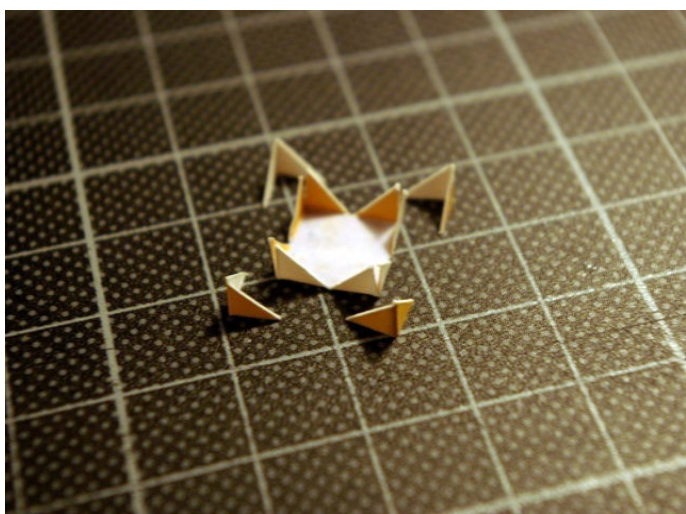
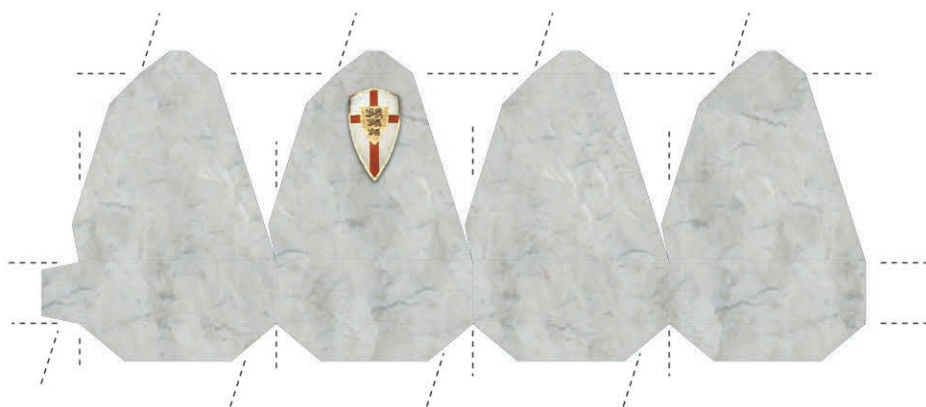
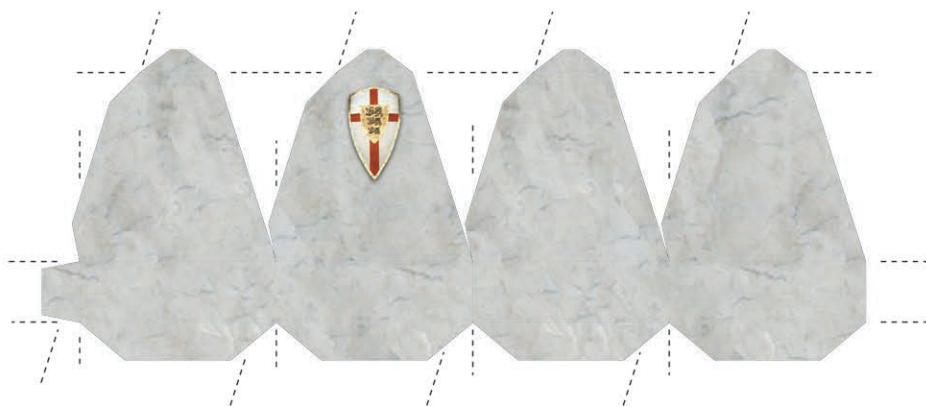


image 11

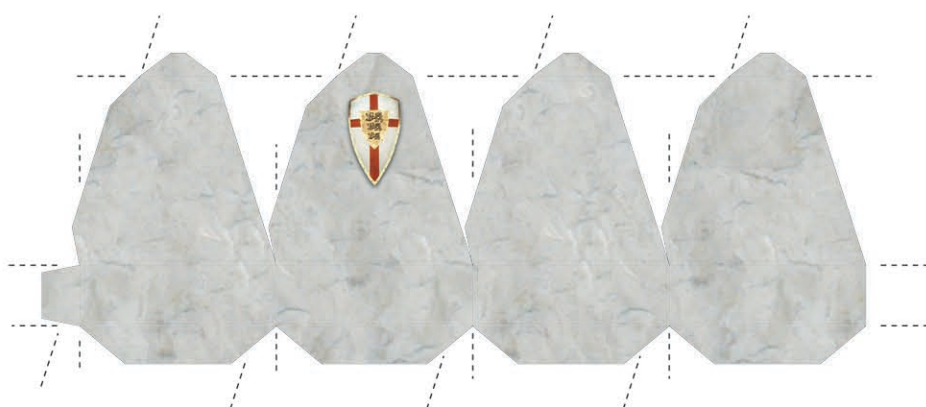
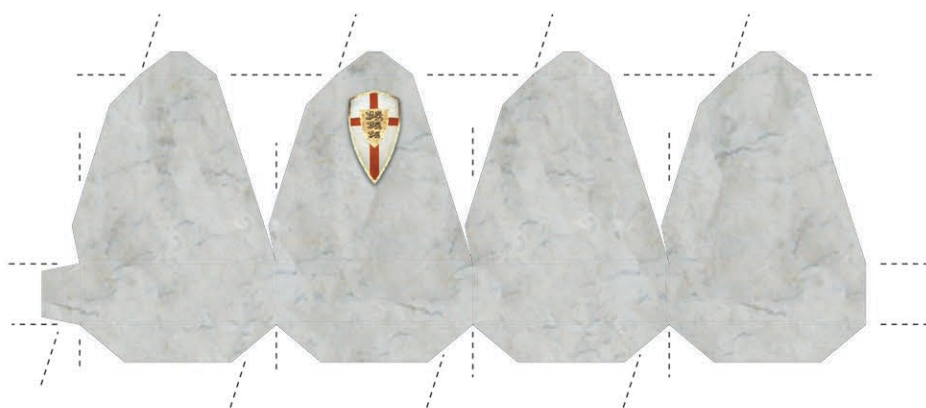


image 12

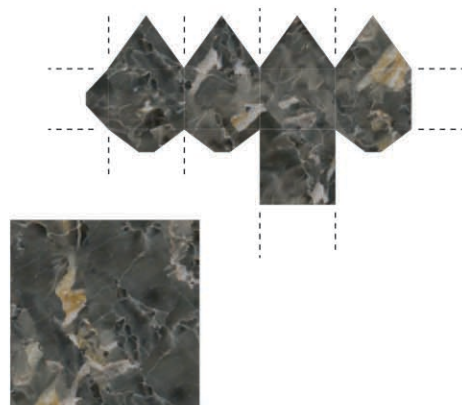
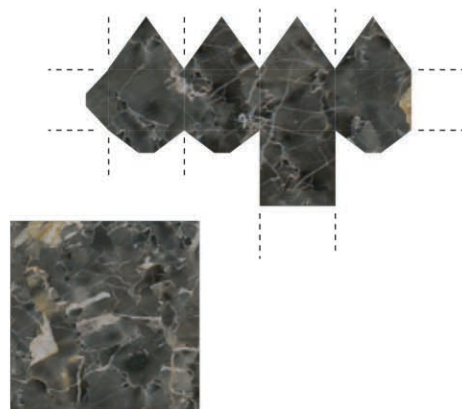




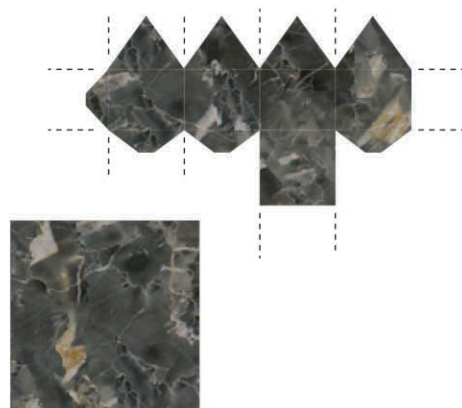
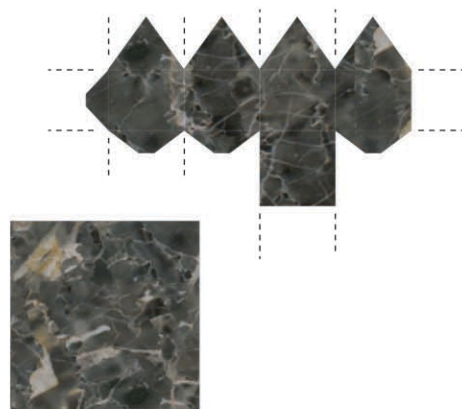
Designed by Sheila Mertens 2006



- PAWNS - PRINT THIS SHEET 2x -

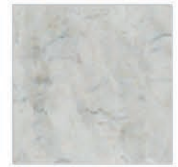
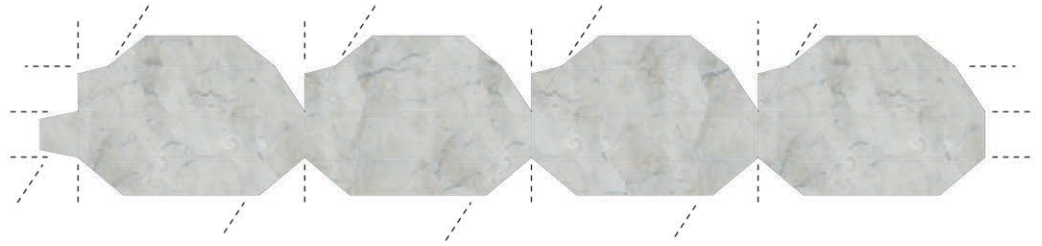


Designed by Sheila Mertens 2006

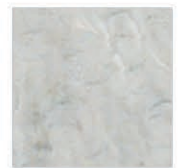
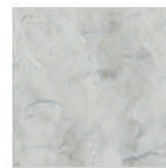
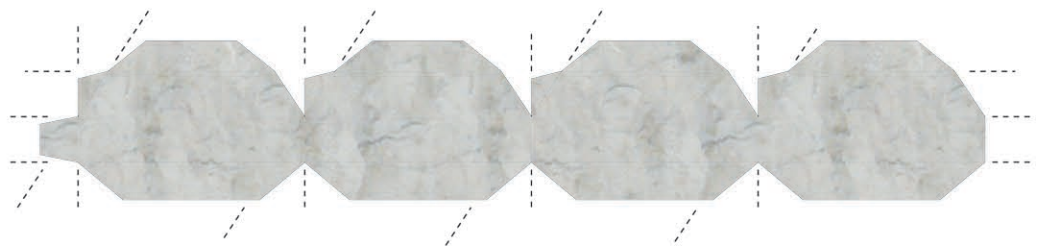


- PAWNS - PRINT THIS SHEET 2x -

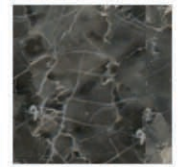
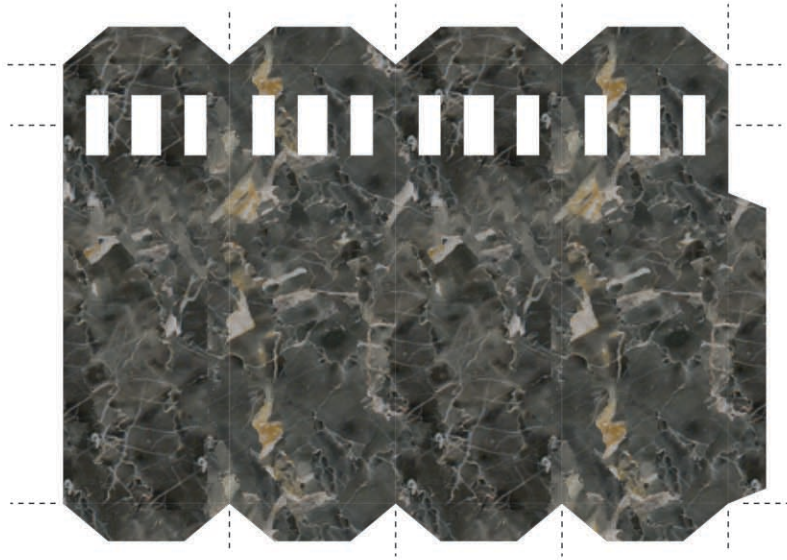
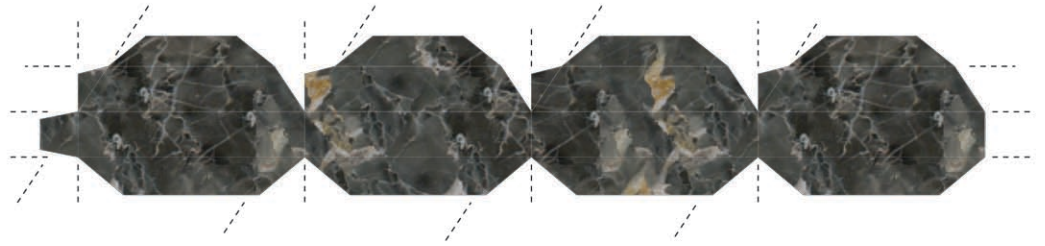
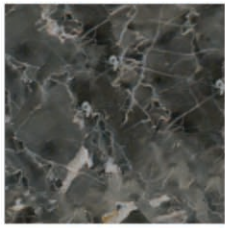




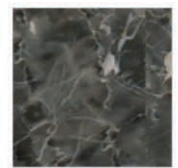
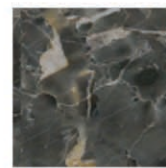
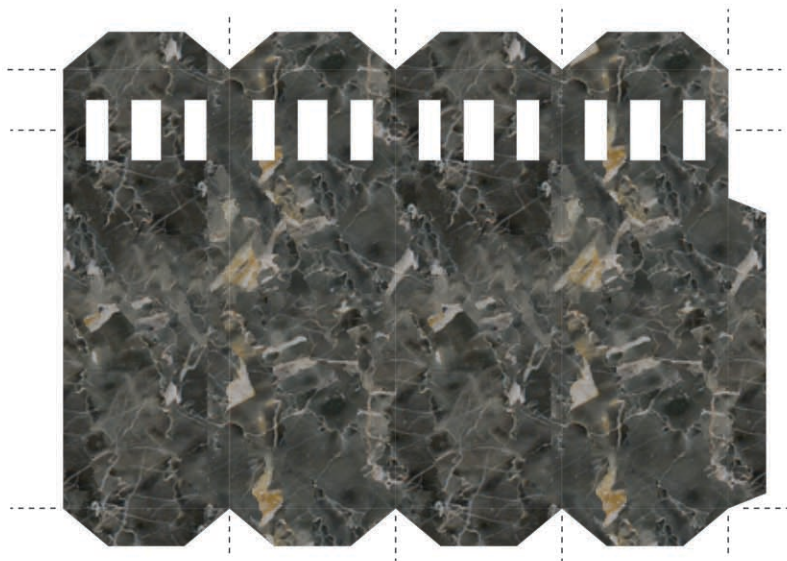
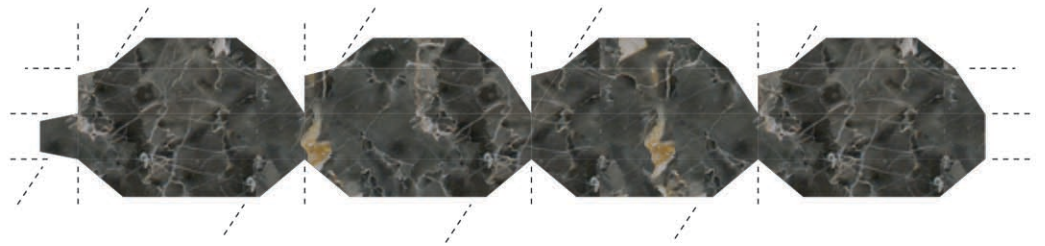
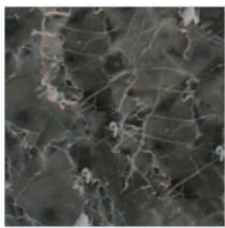
Designed by  
Sheila Mertens 2006



- ROOK -

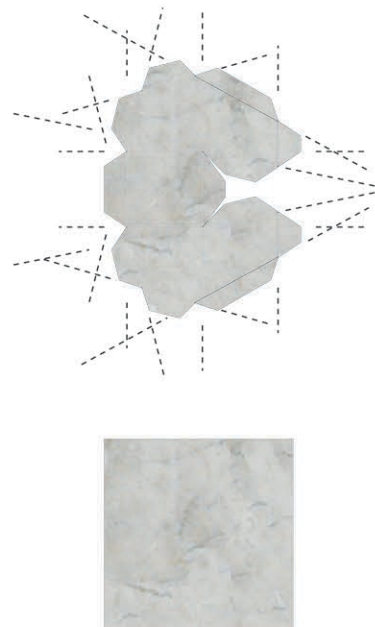
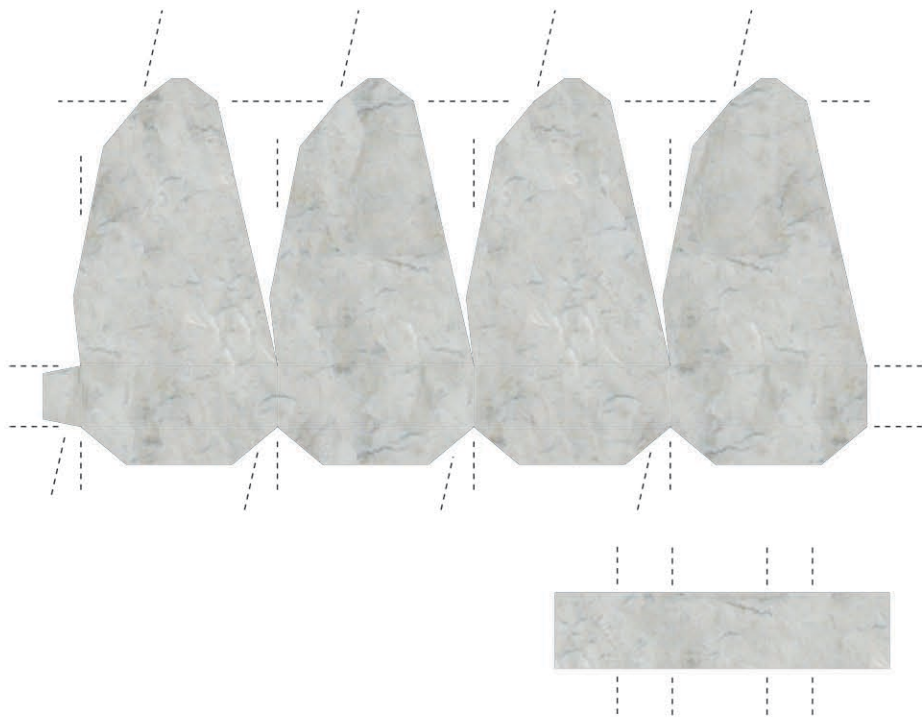


Designed by  
Sheila Mertens 2006

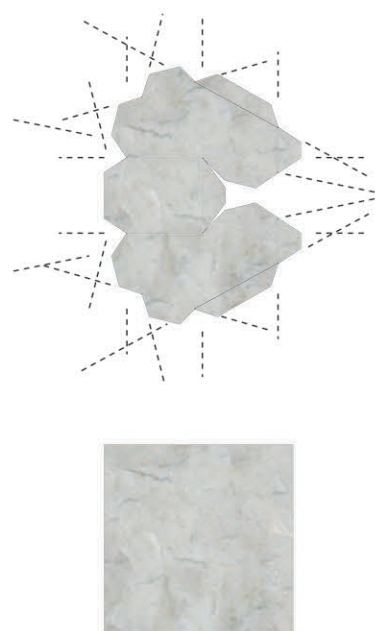
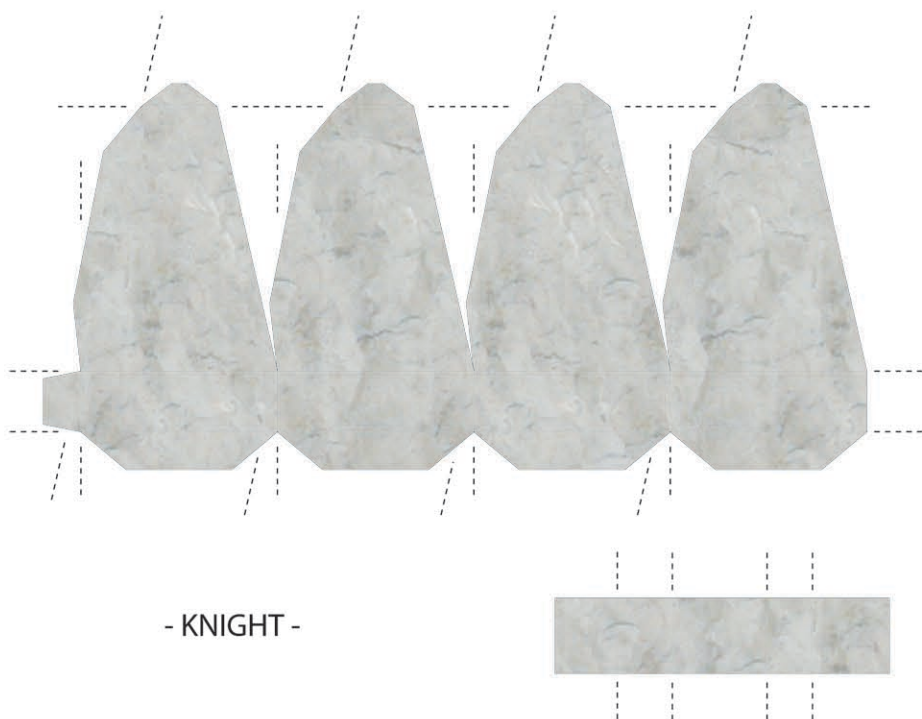


- ROOK -



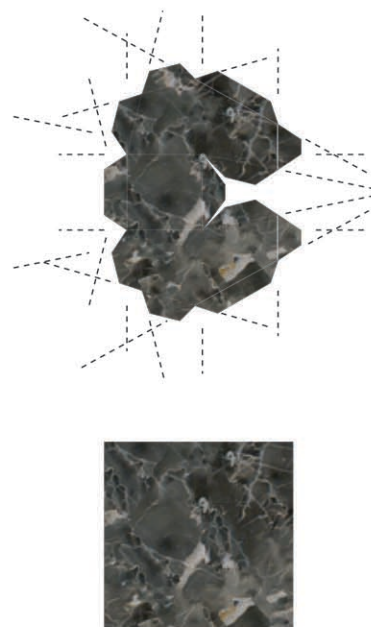
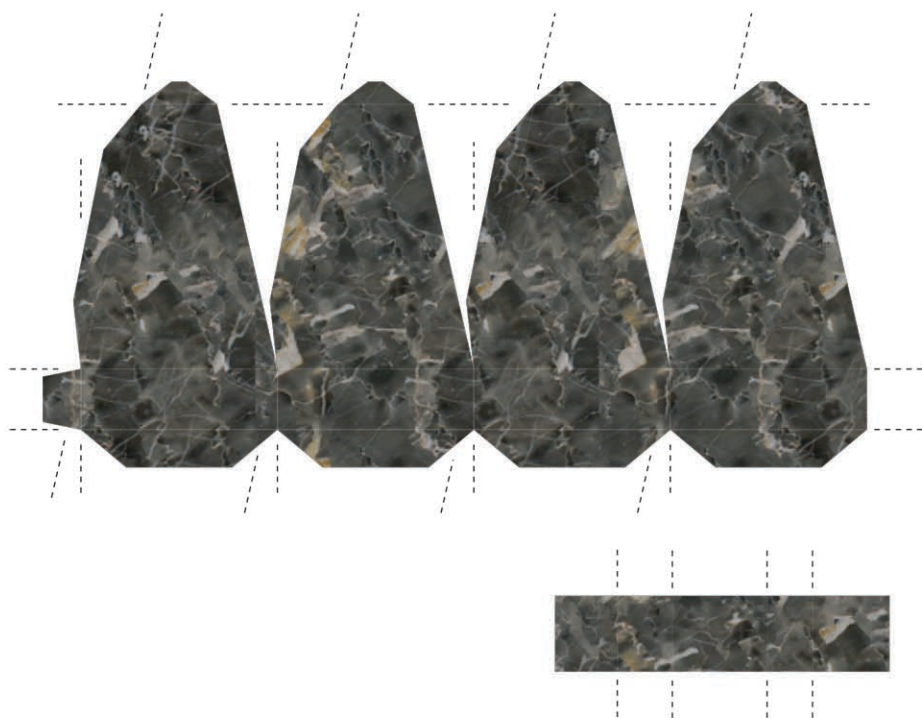


Designed by Sheila Mertens

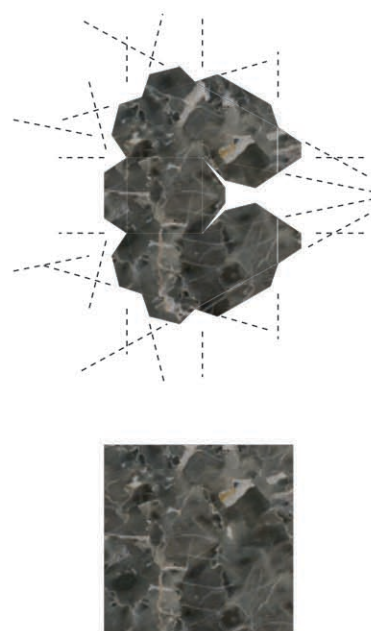
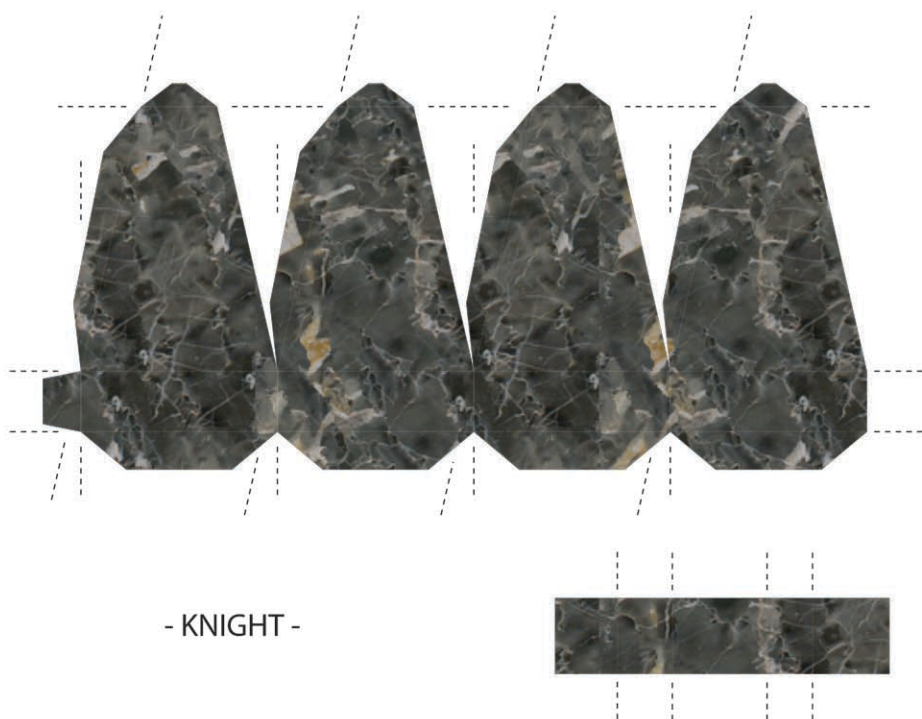


- KNIGHT -





Designed by Sheila Mertens



- KNIGHT -





Designed by Sheila Mertens



- BISHOP -



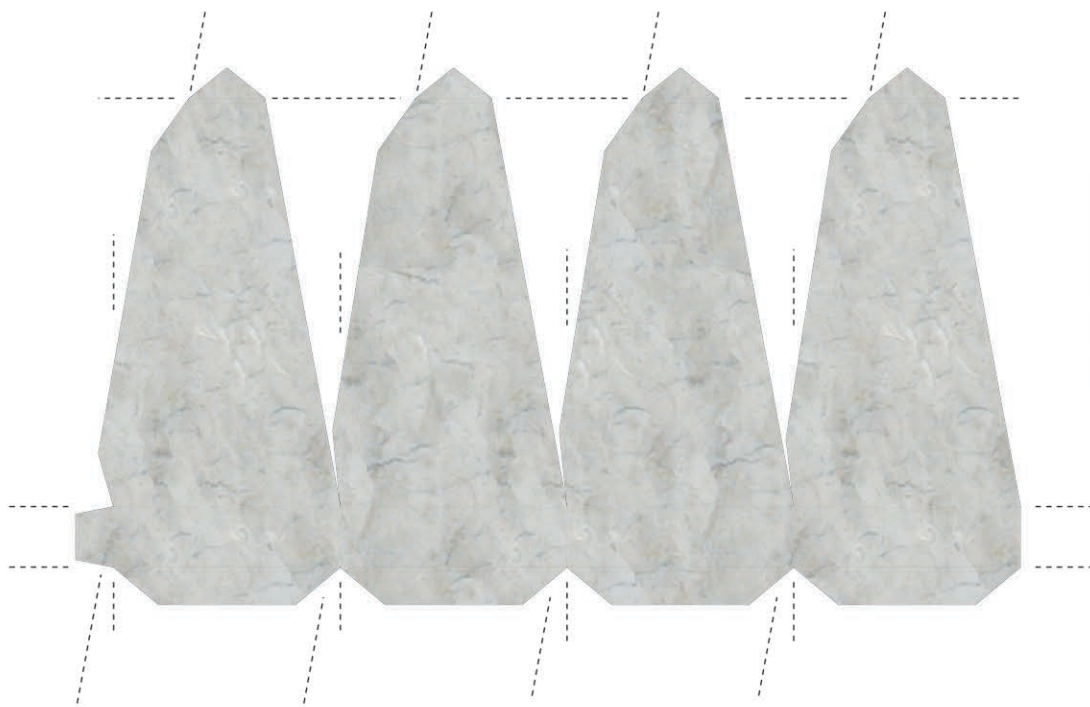


Designed by Sheila Mertens



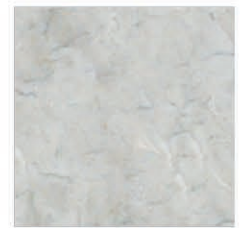
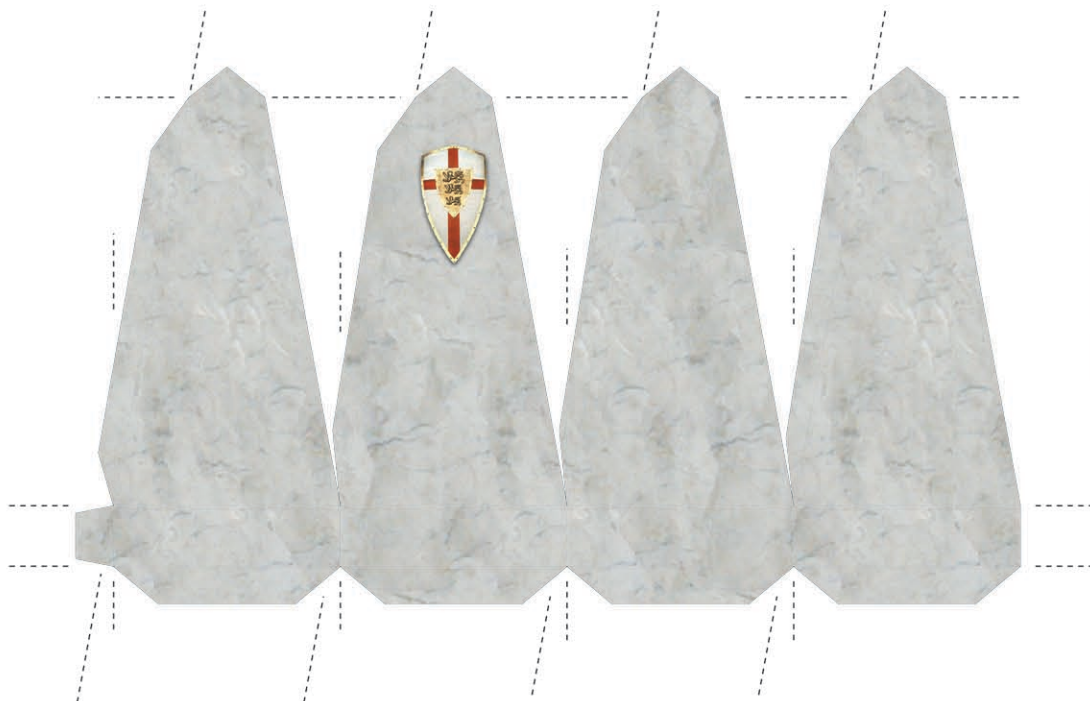
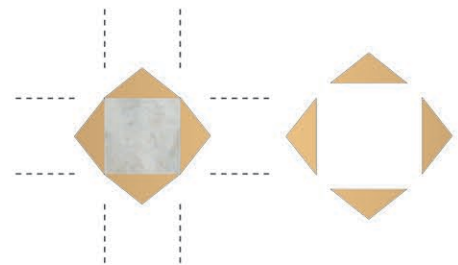
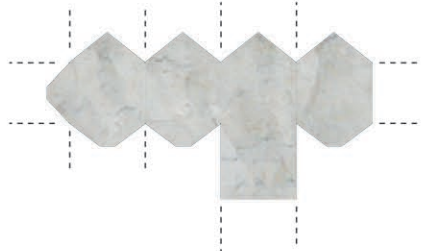
- BISHOP -



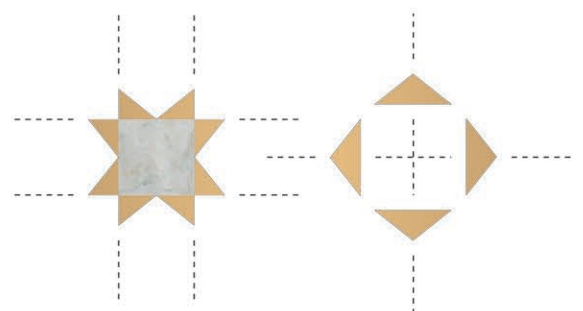
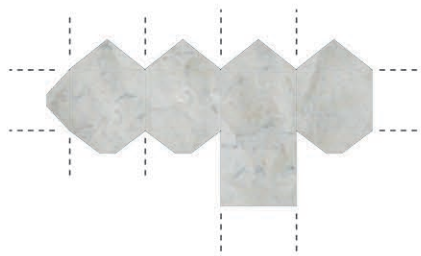


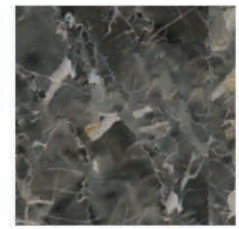
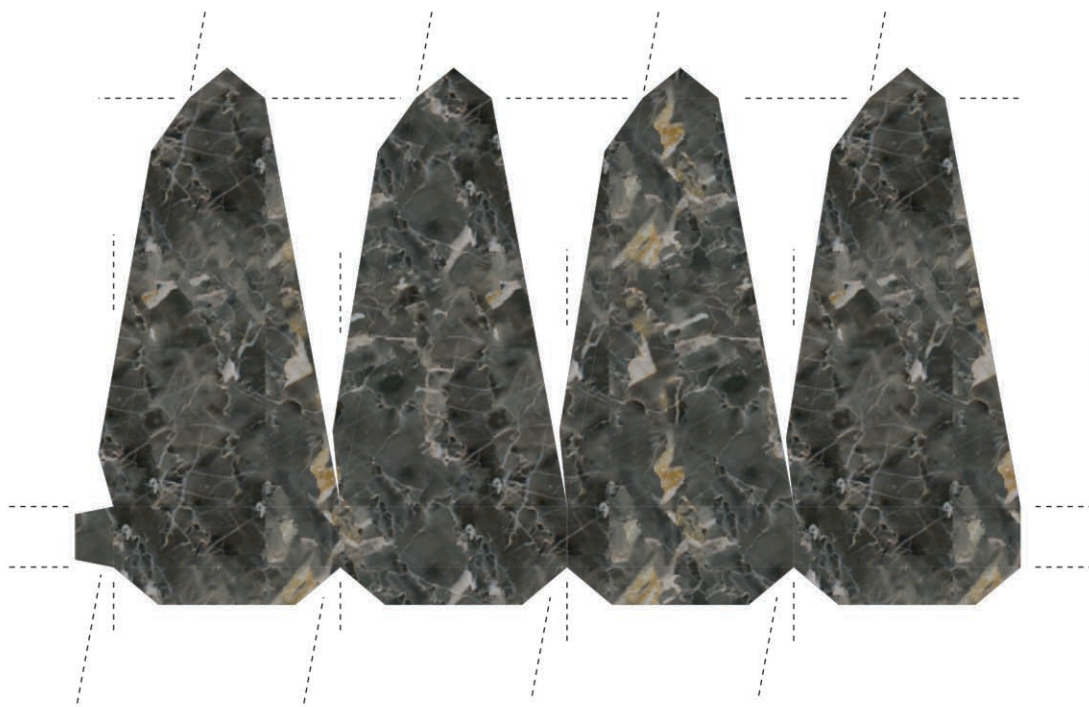
- QUEEN -

Designed by  
Sheila Mertens



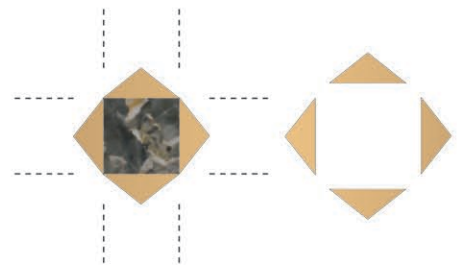
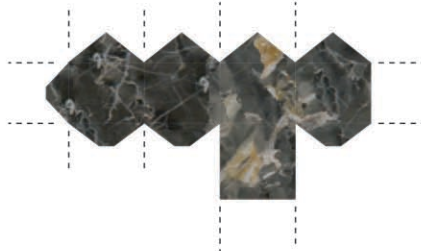
- KING -



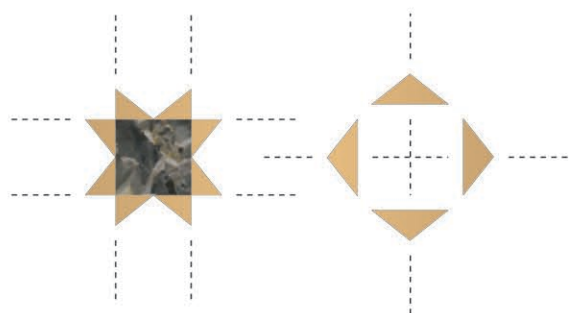
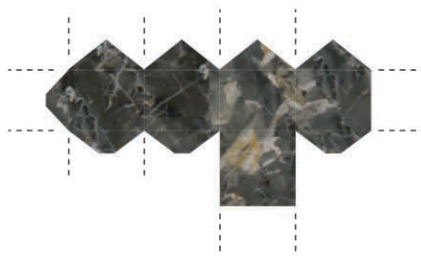


- QUEEN -

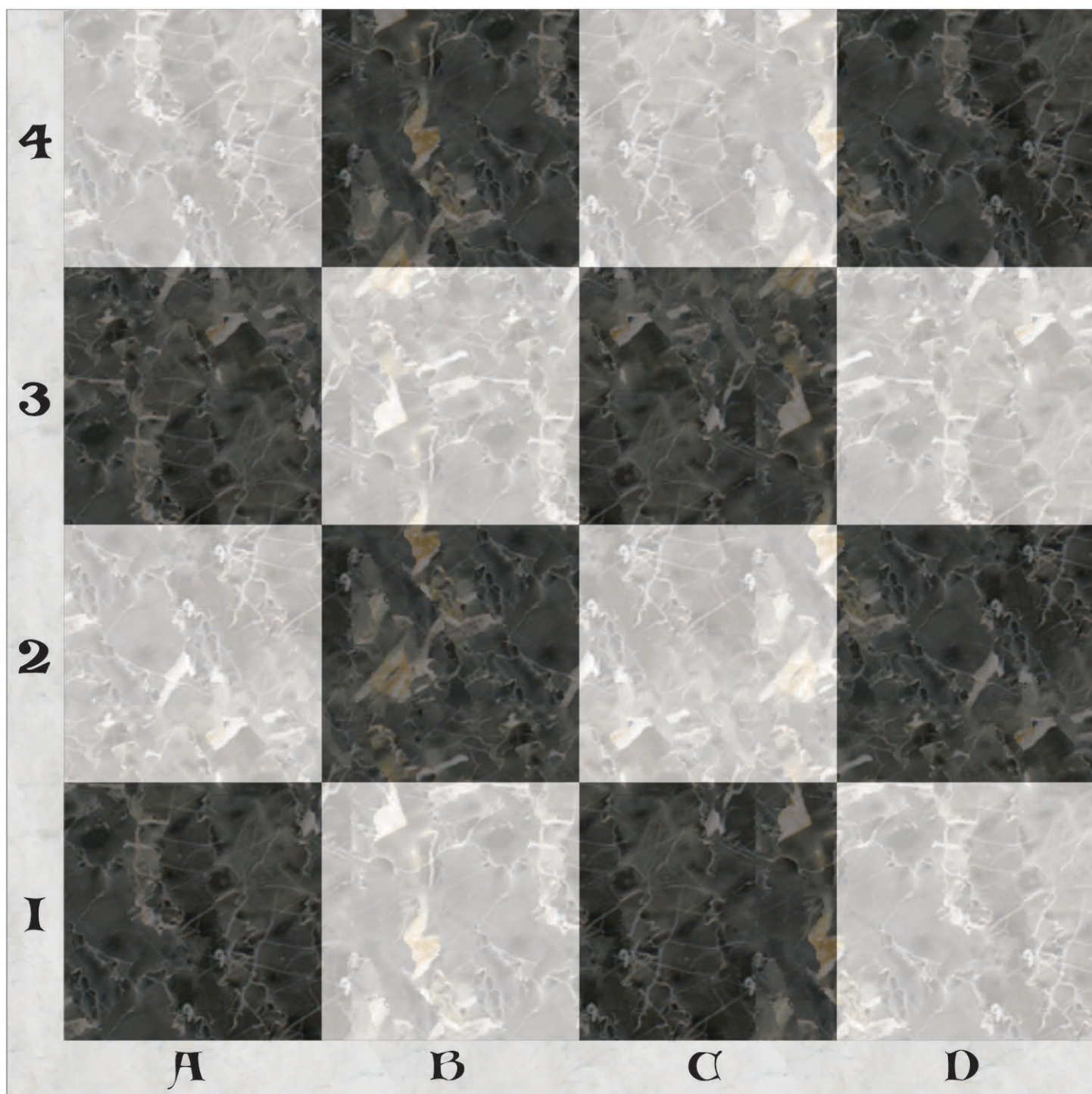
Designed by  
Sheila Mertens



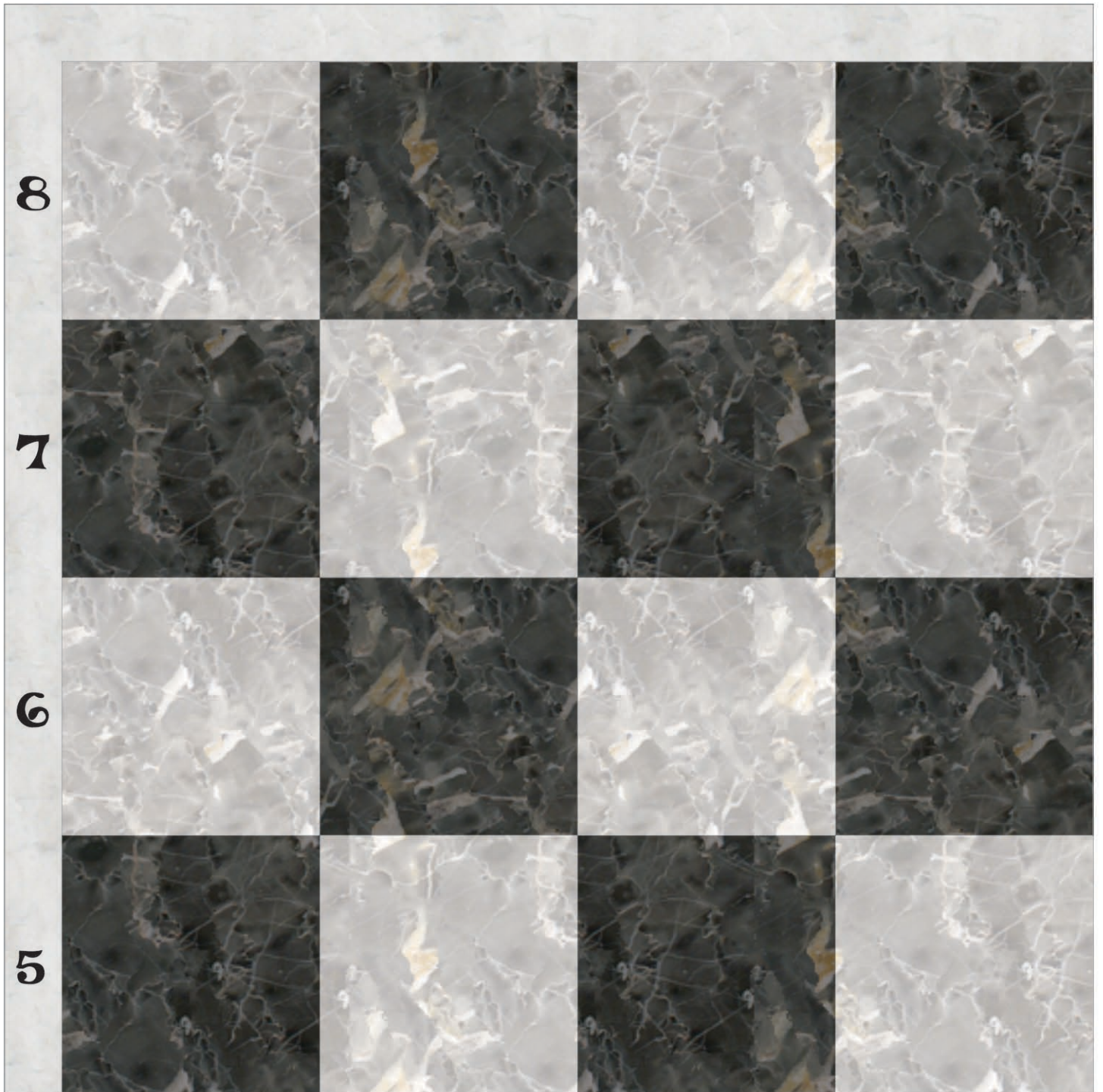
- KING -





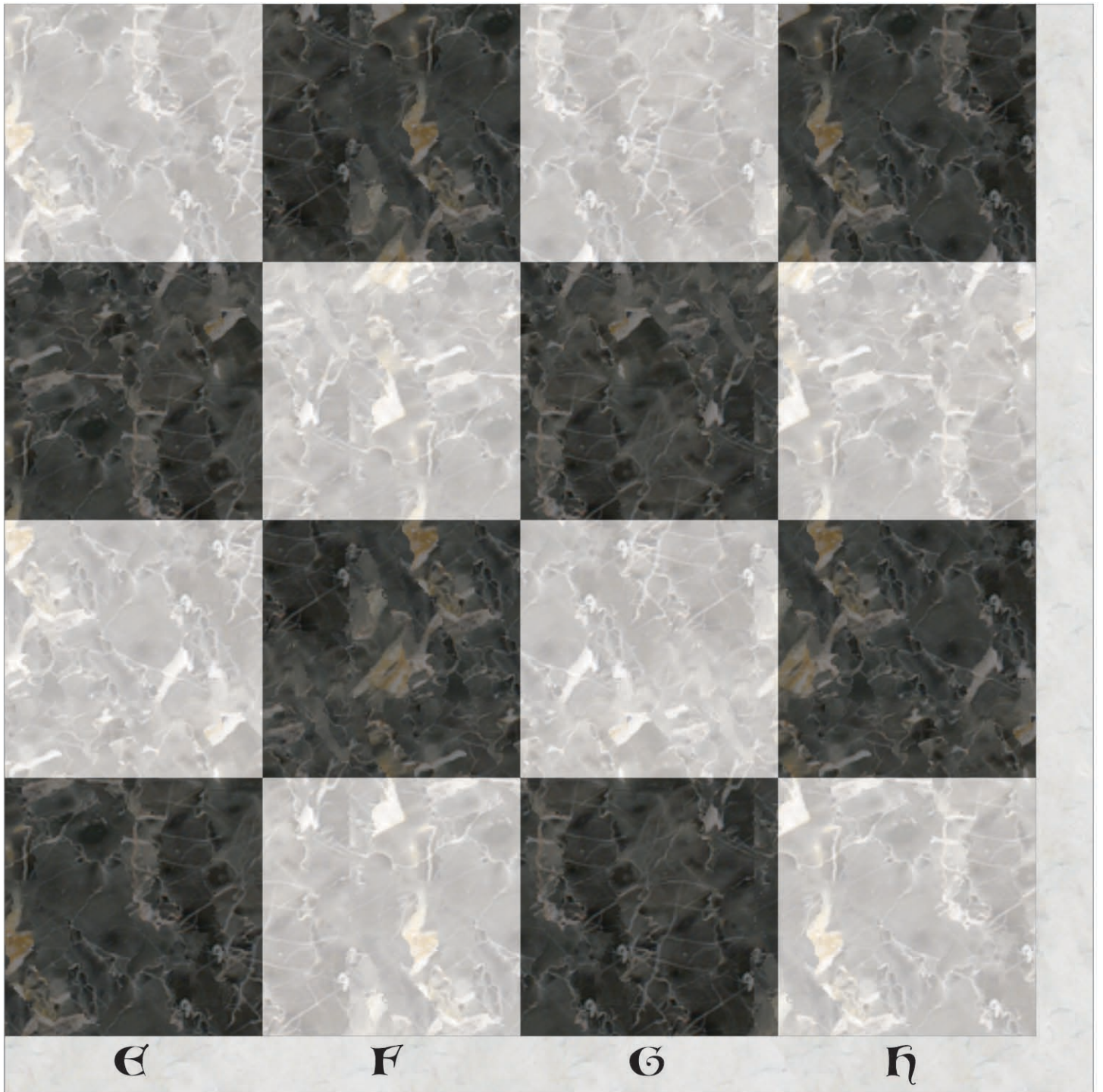


Designed by Sheila Mertens 2006



Designed by Sheila Mertens 2006





Designed by Sheila Mertens 2006



Designed by Sheila Mertens 2006