

Create your own classic cube puzzle, one of the most clever types of puzzle around, with paper! Fit the seven pieces together to form a cube, each face with a neat, checked pattern. The puzzle has 21 different solutions, but none of them are easy to come by! Method of play is simple yet addictive - why not give it a try?

Puzzle Editing Supervisor: MINE. Uyematsu(DYLAN-Kobo)

Instructions

Pattern: 12 sheets

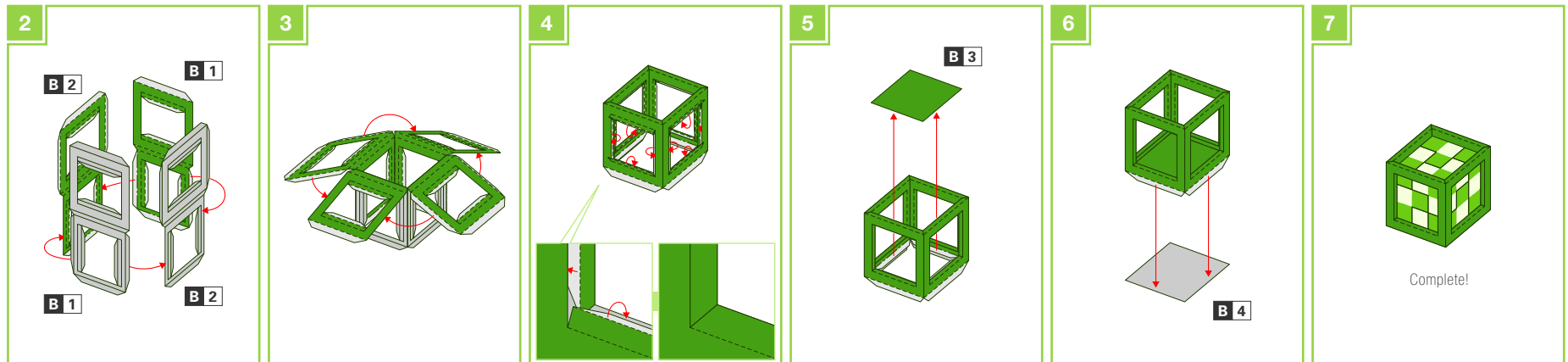
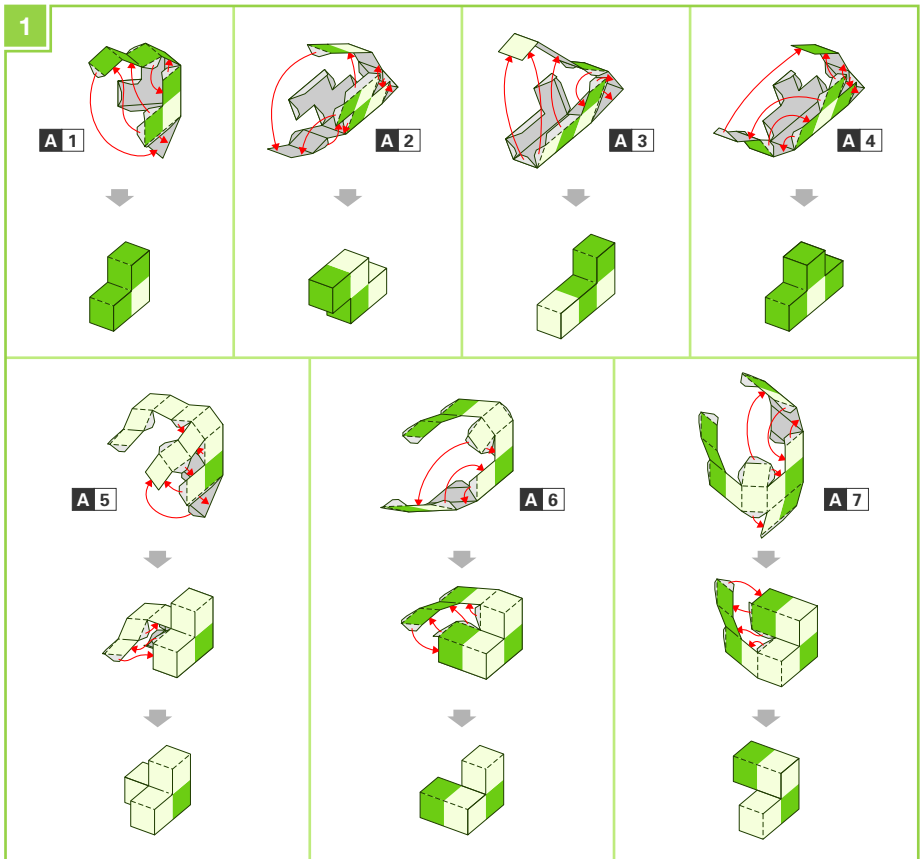
Number of Parts: 13

- Mountain fold
- Valley fold
- Scissors line
- Cut in line
- ✂ Cut out
- Glue spot

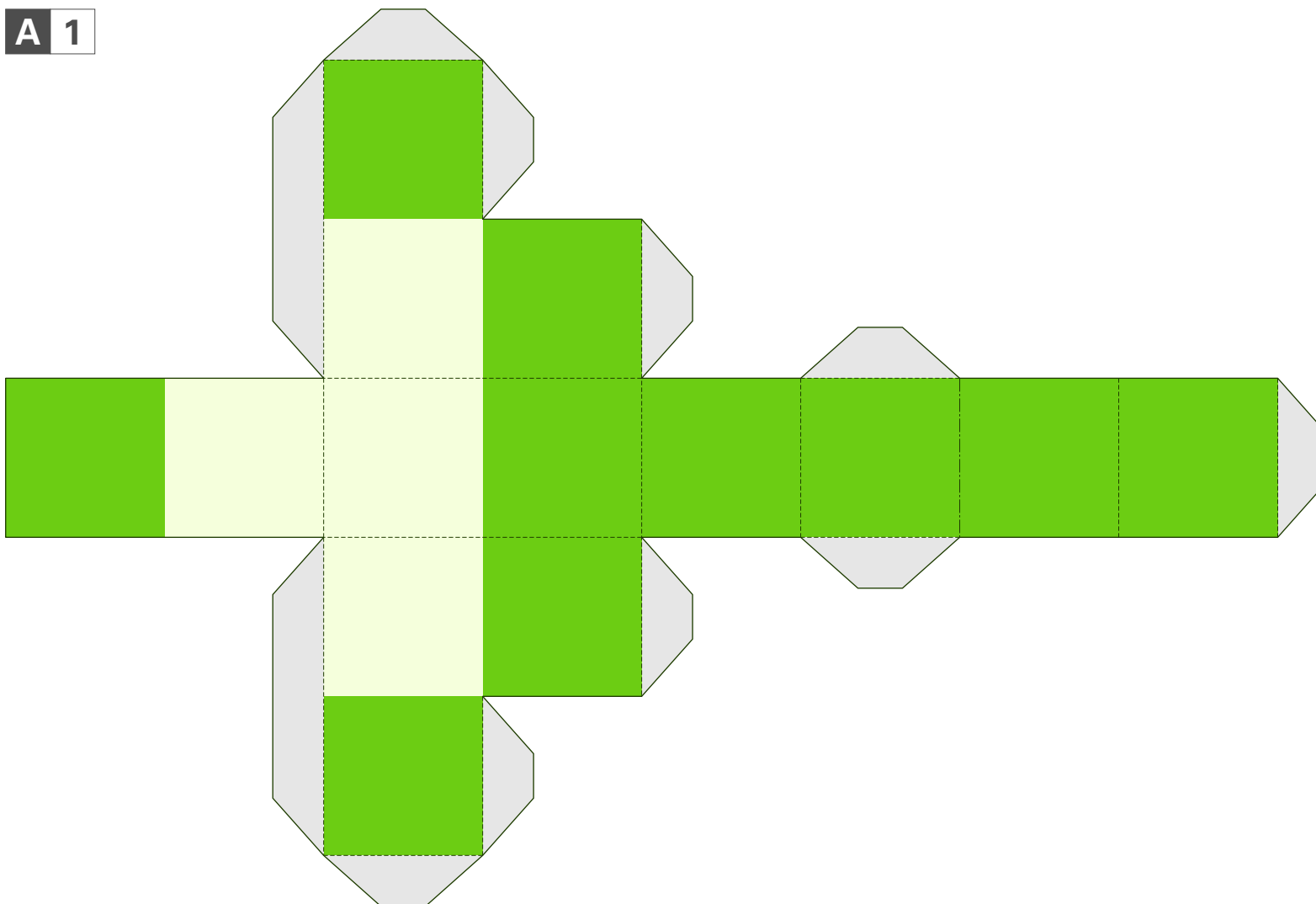
You will need: Scissors, glue, a ruler, a used ball-point pen

Assembly tip: Trace along the folds with a ruler and a used pen(no-ink) to get a sharper, easier fold.

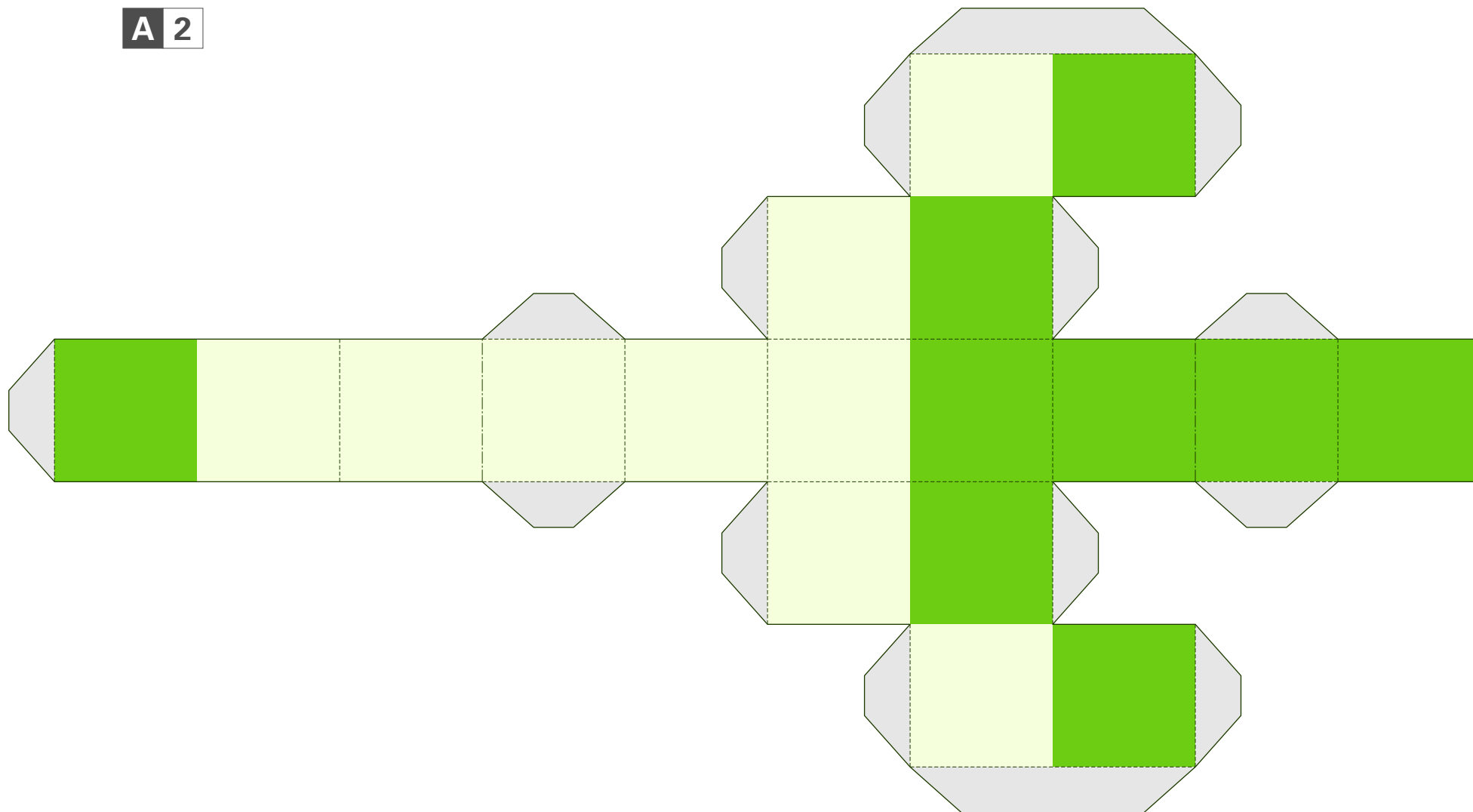
Caution: Glue, scissors and other tools may be dangerous to young children so be sure to keep them out of the reach of young children.



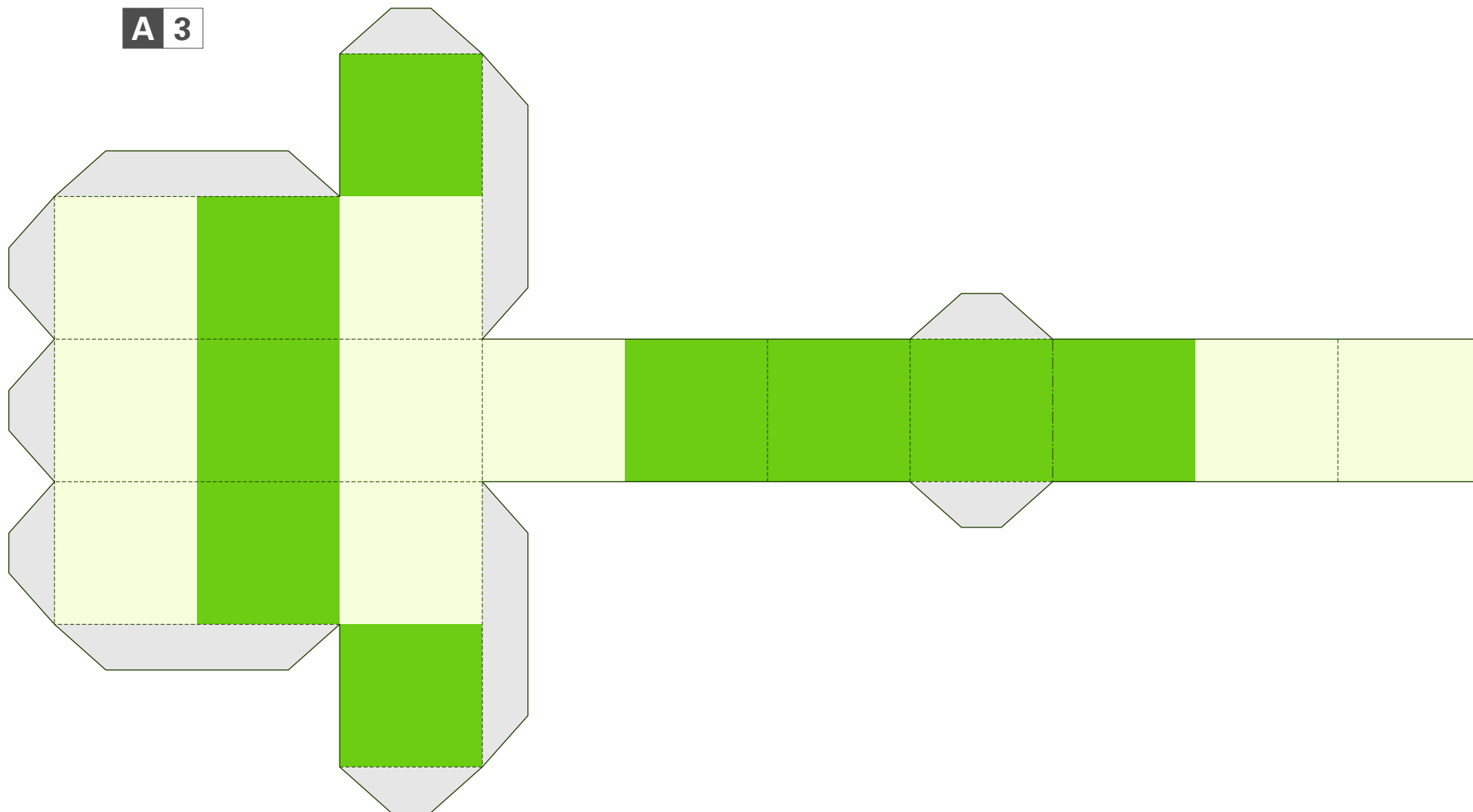
A 1



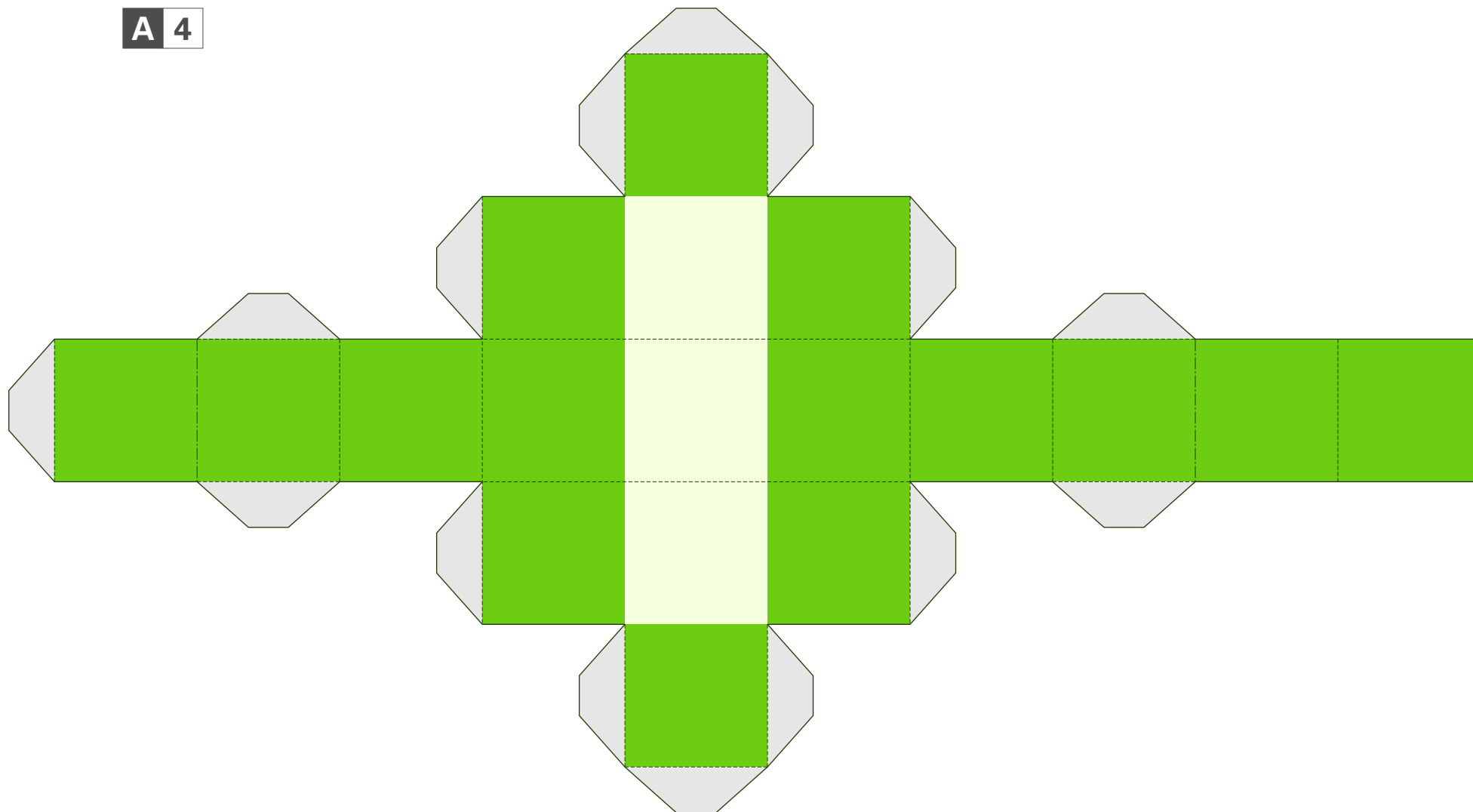
A 2



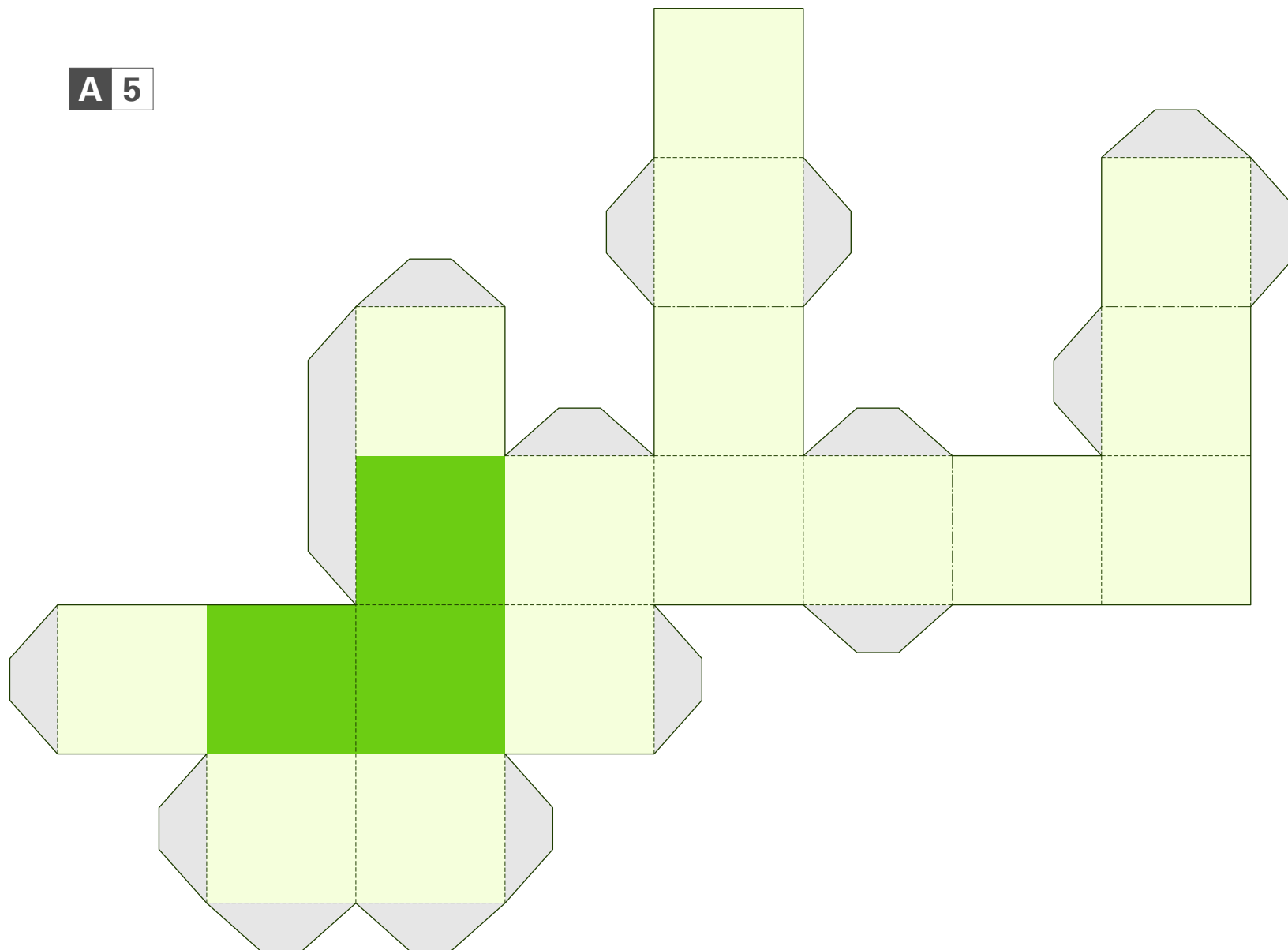
A 3



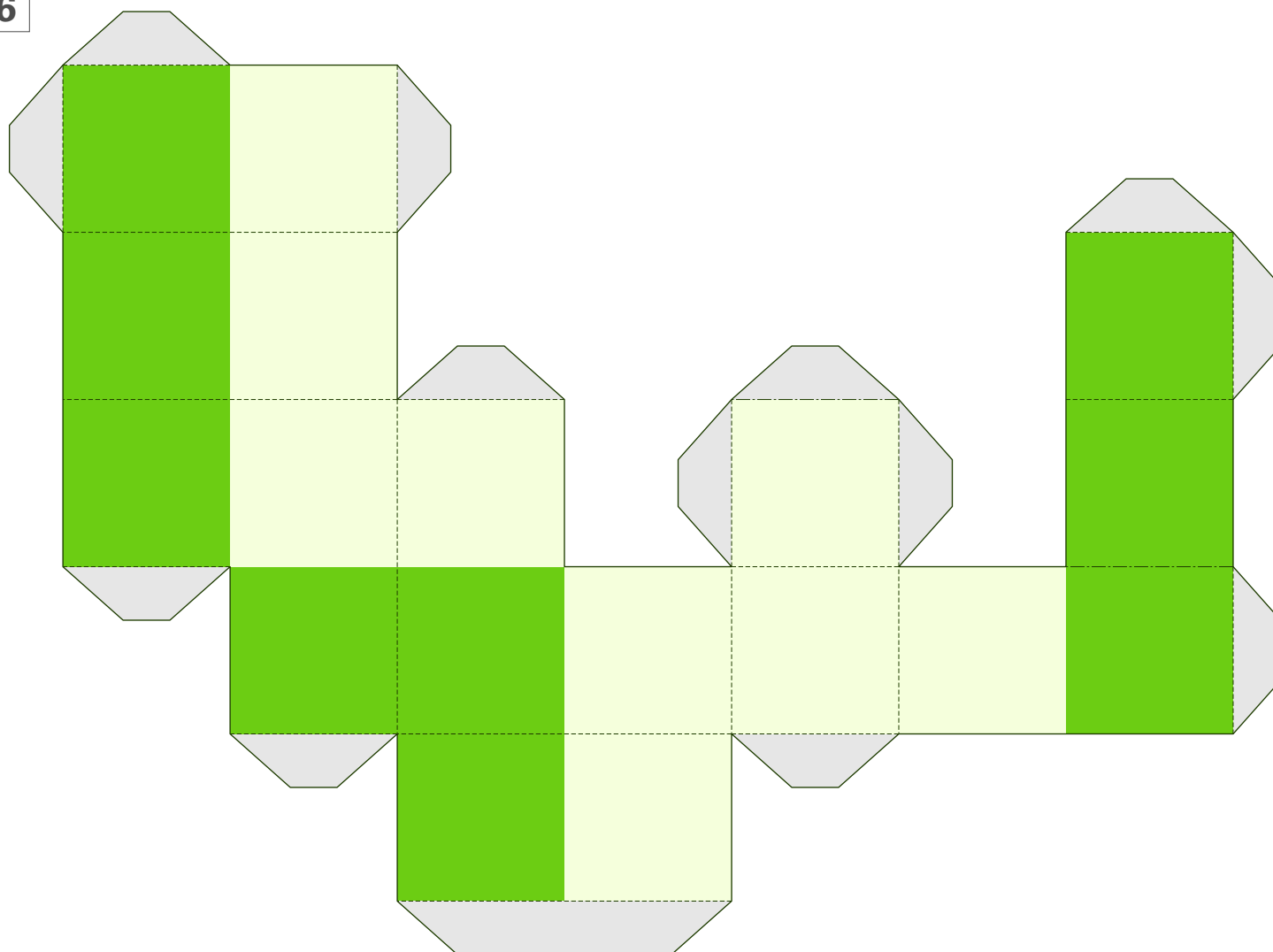
A 4



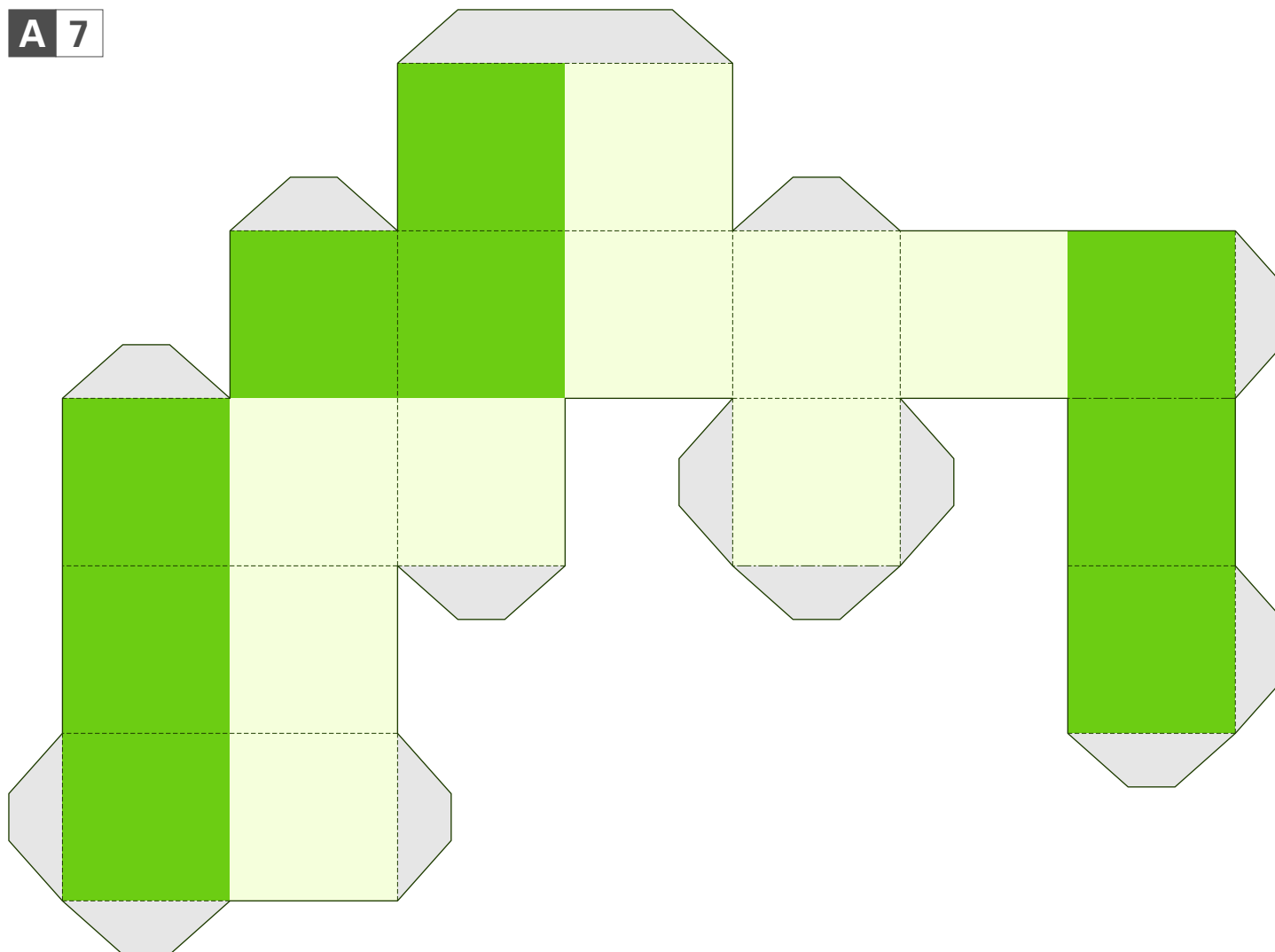
A 5

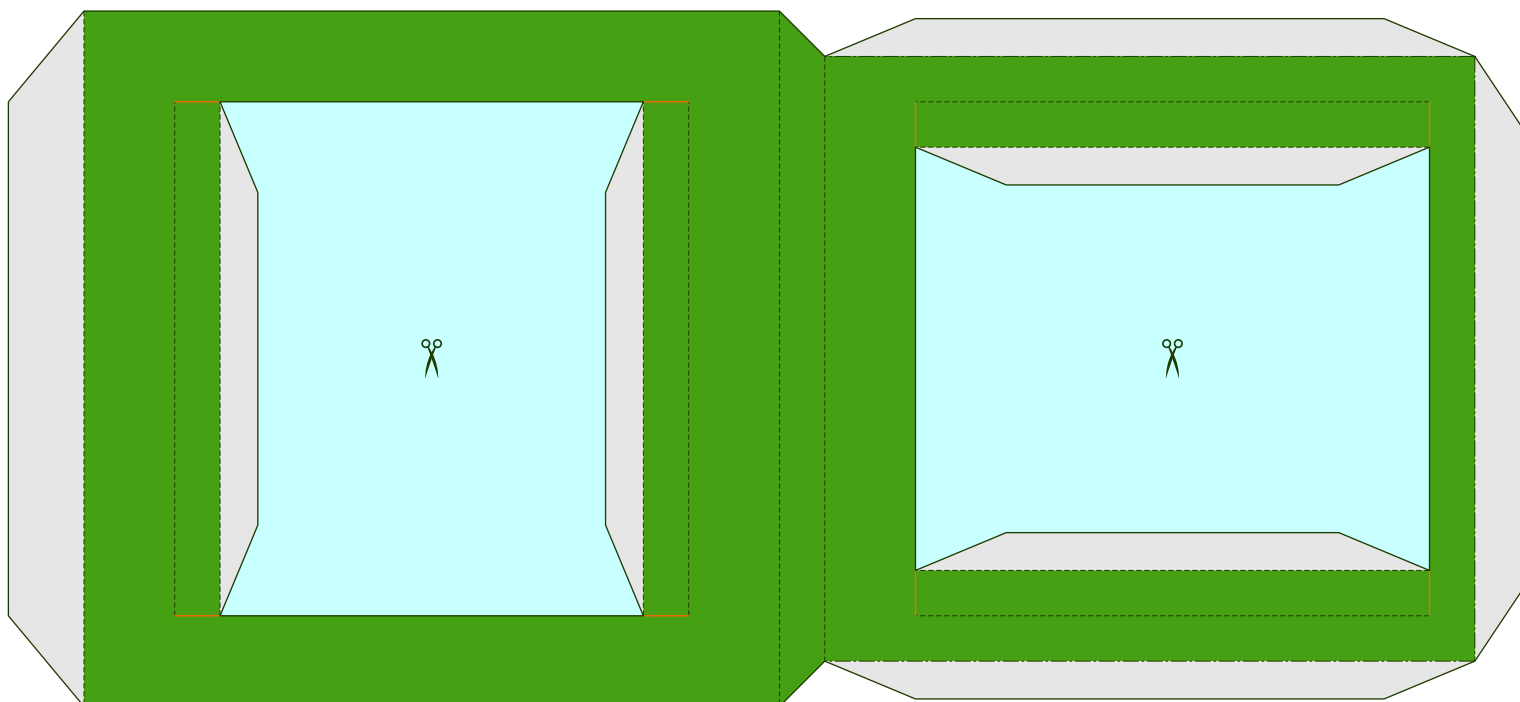


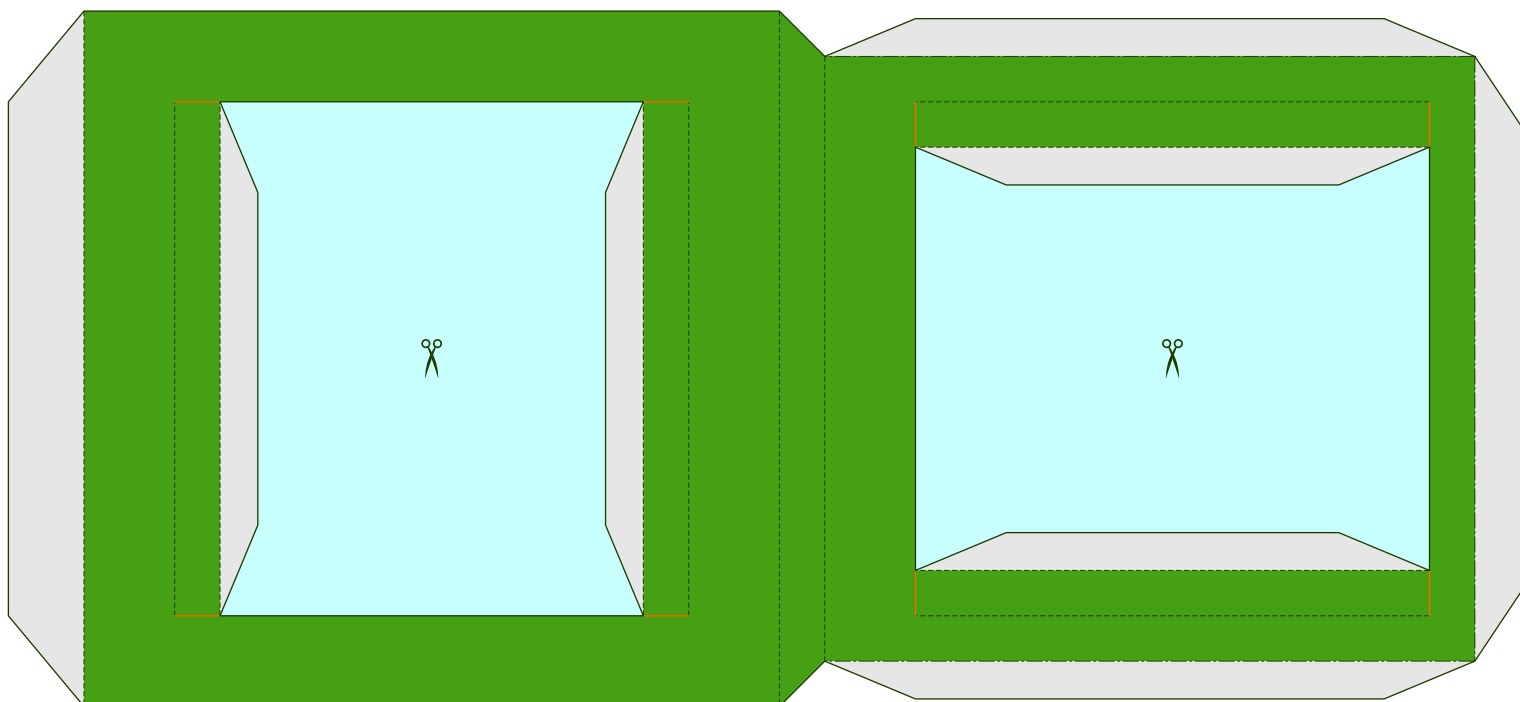
A 6

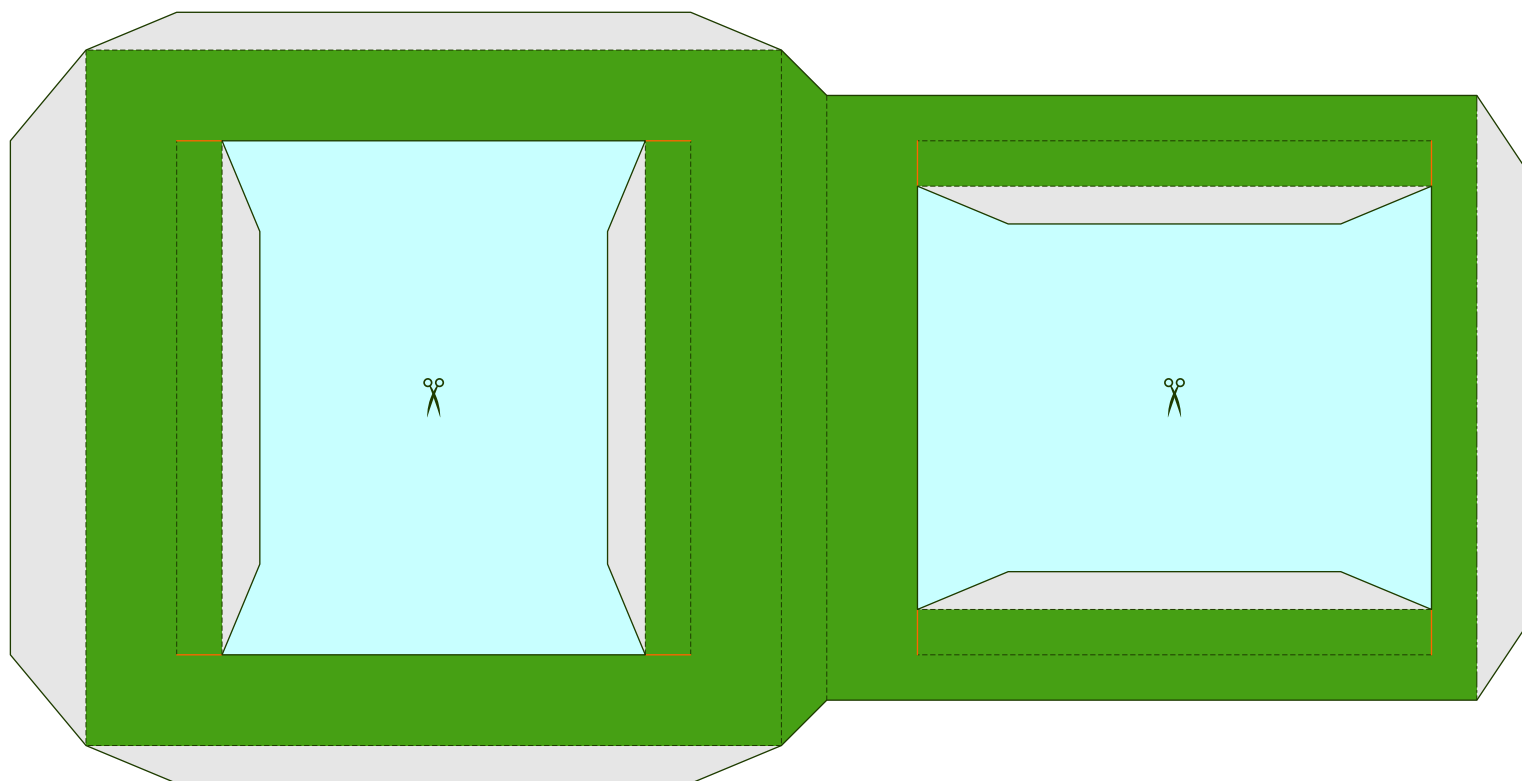


A 7

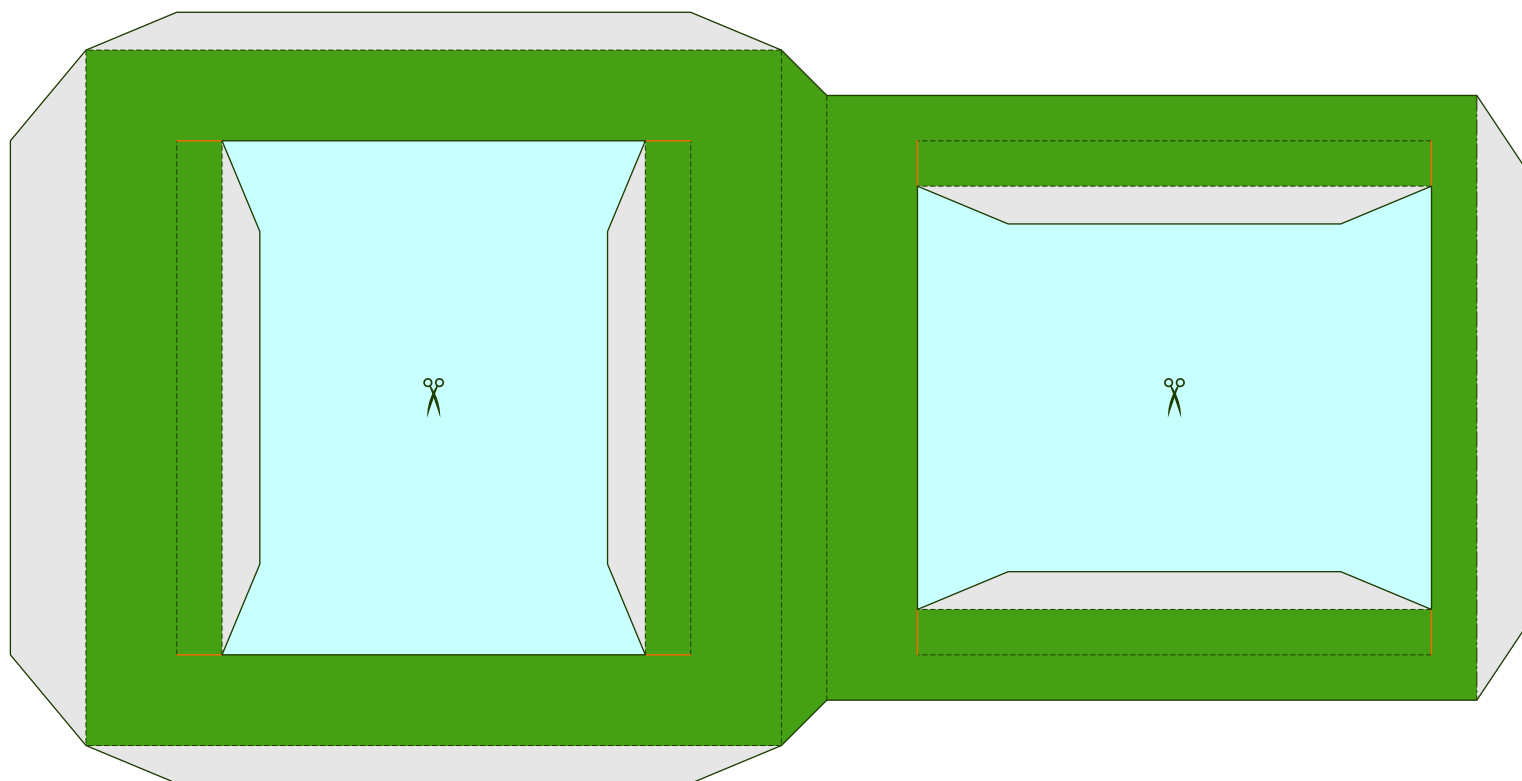


B 1

B 1

B 2

B 2



B 3



B 4

Solution Example

The puzzle has 21 different solutions.

1

2

CAUTION

Do not hit other people with the pointed edges.
Doing so could result in injury.
Adults should make sure that children observe this caution.

Canon
CREATIVE PARK
<http://www.canon.com/c-park/>
© DYLAN-Kobo © erico