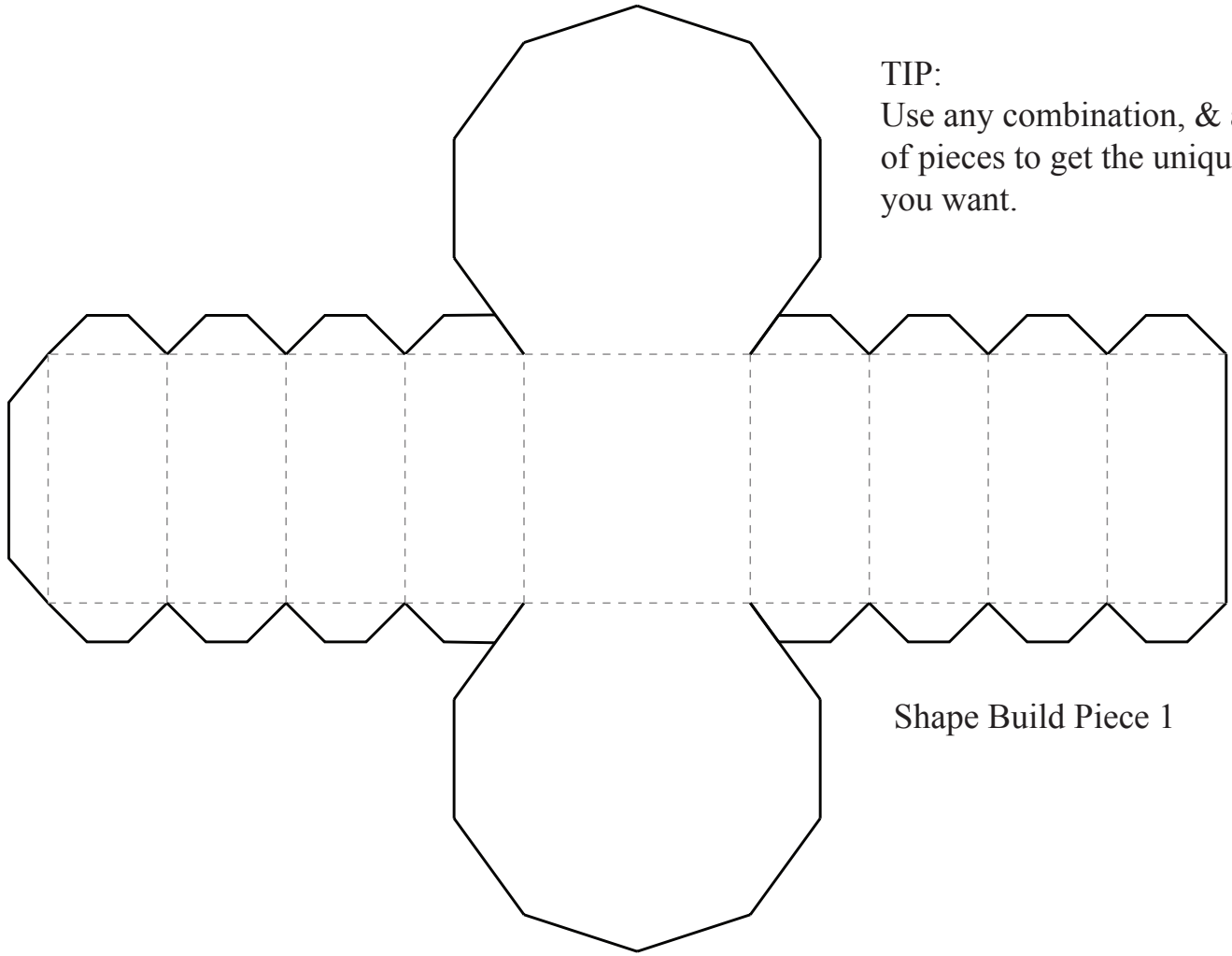


TINY TIKI IDOL PAPER TOY

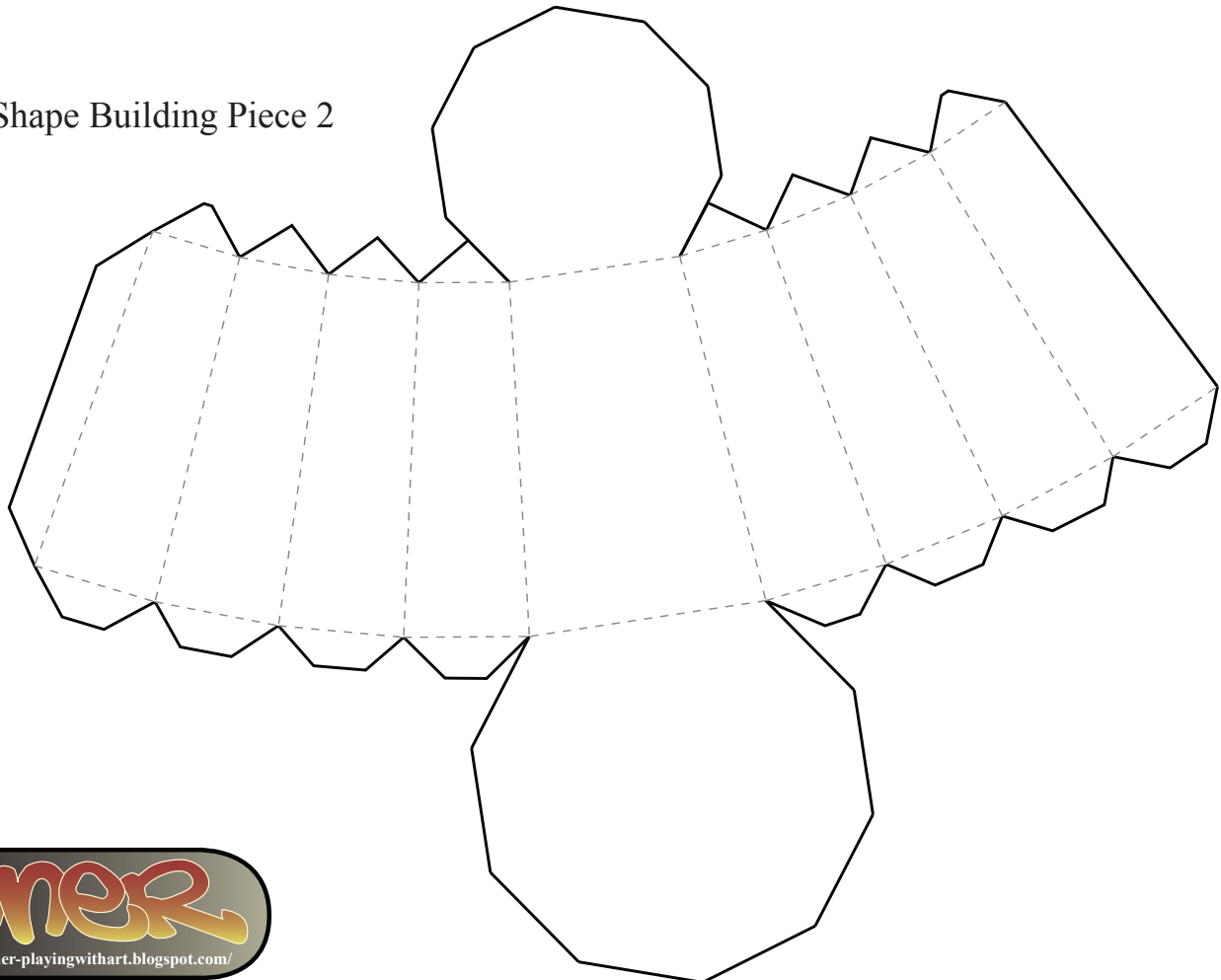
TIP:

Use any combination, & amount of pieces to get the unique look you want.

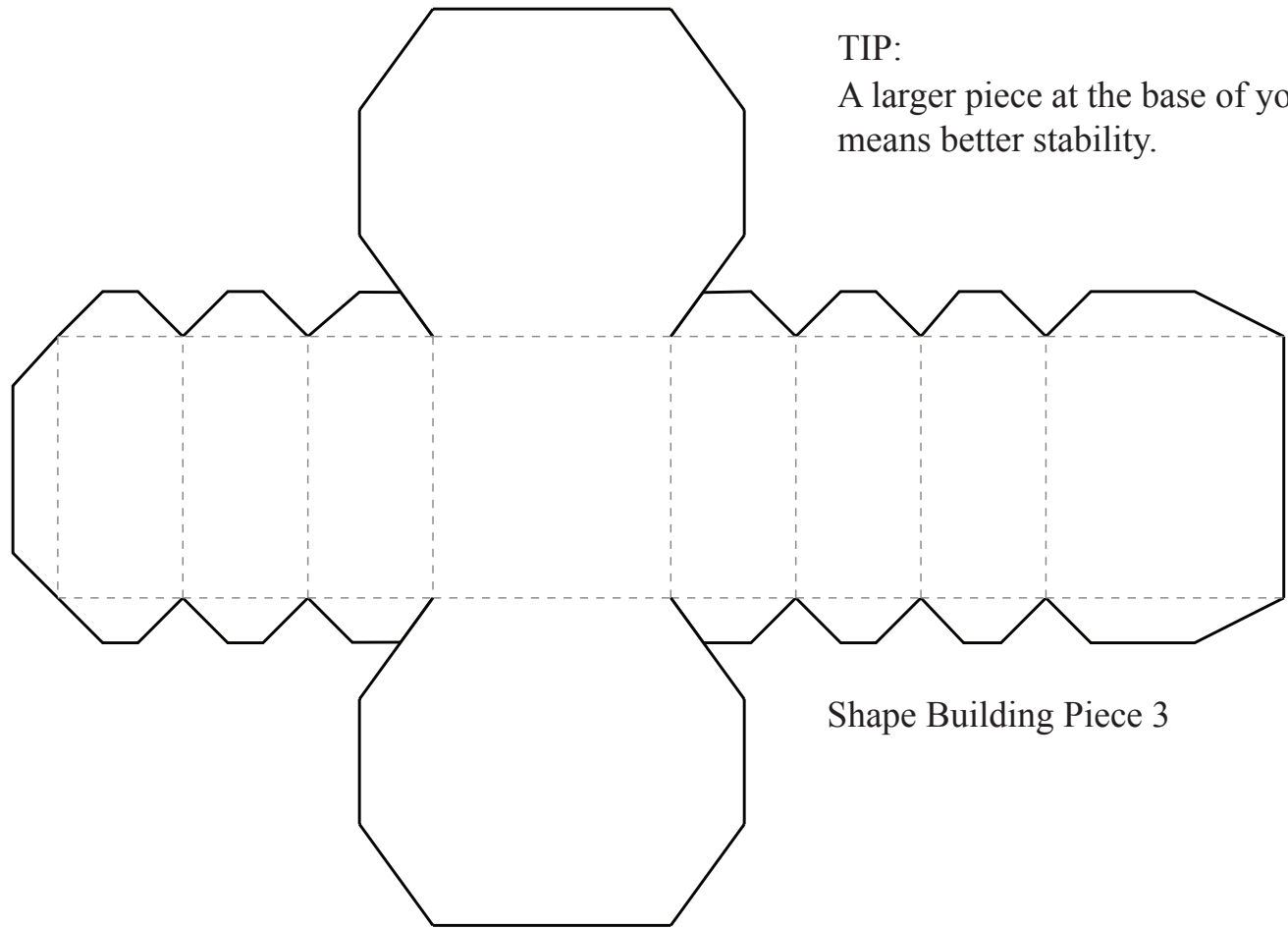


Shape Build Piece 1

Shape Building Piece 2



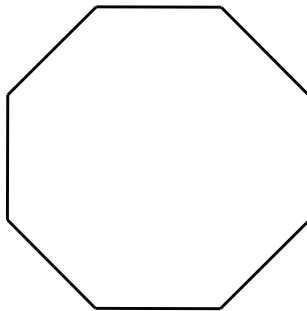
TINY TIKI IDOL PAPER TOY



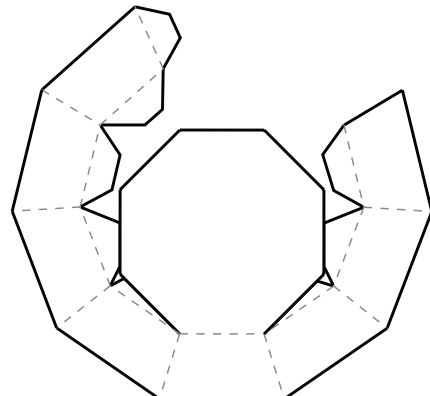
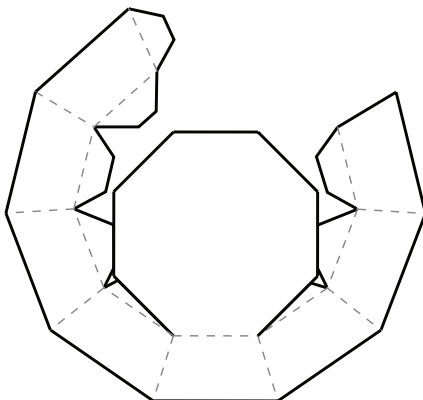
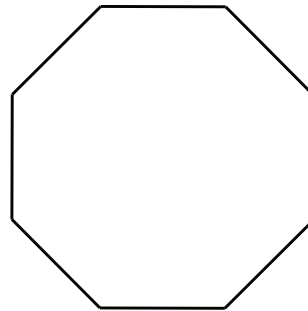
TIP:

A larger piece at the base of your Tiki means better stability.

Shape Building Piece 3



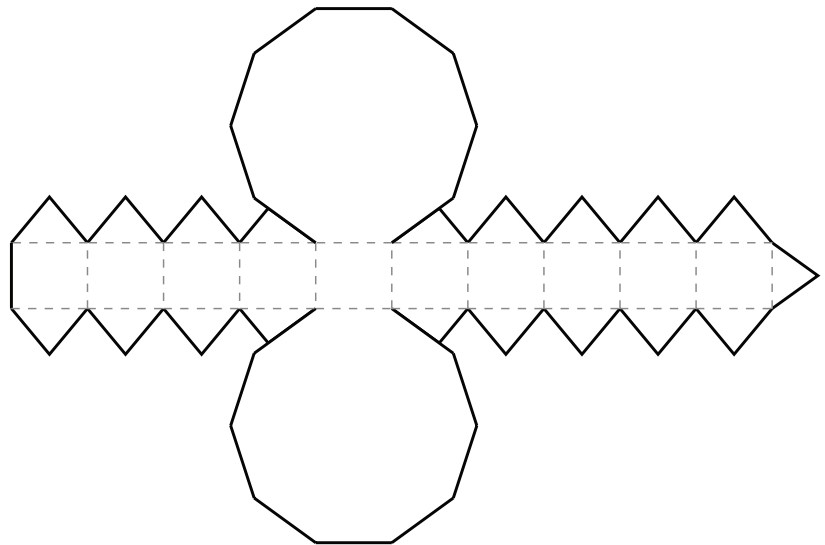
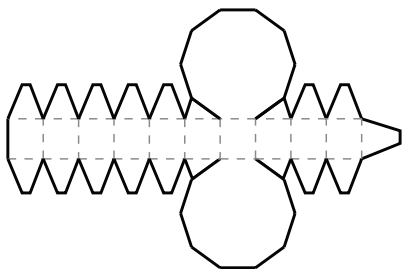
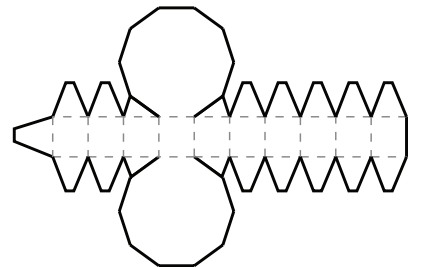
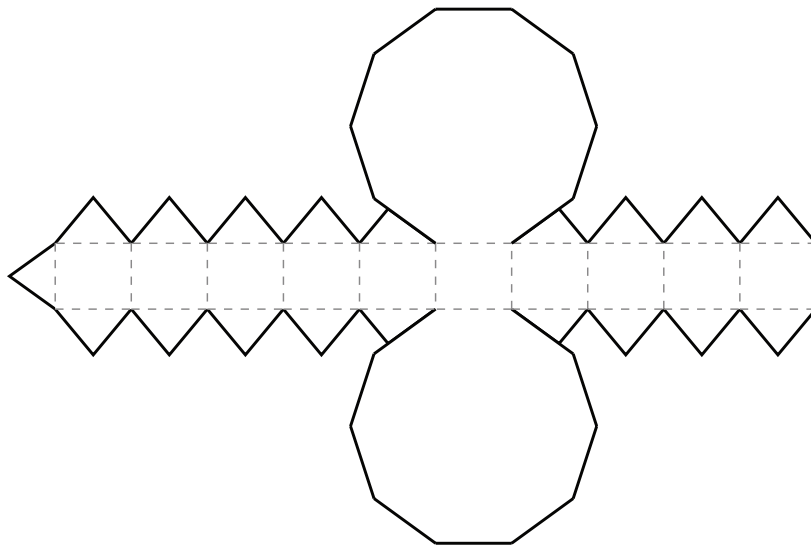
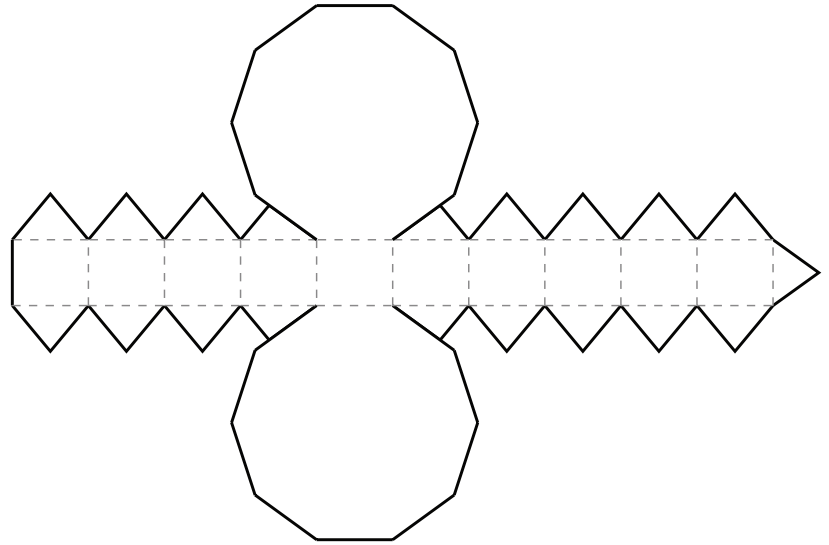
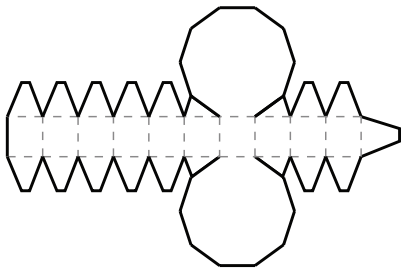
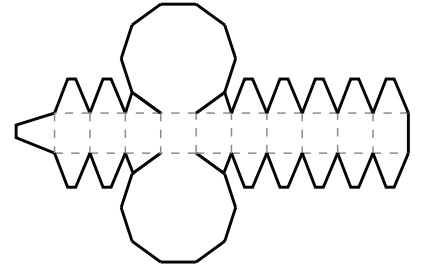
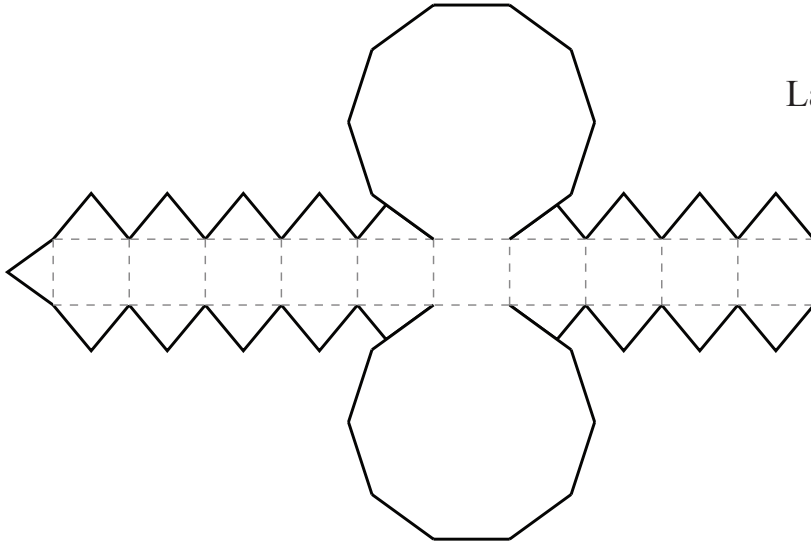
Flat end cap



Beveled End-cap

TINY TIKI IDOL PAPER TOY

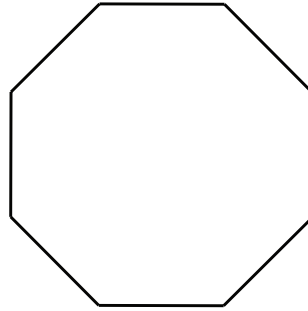
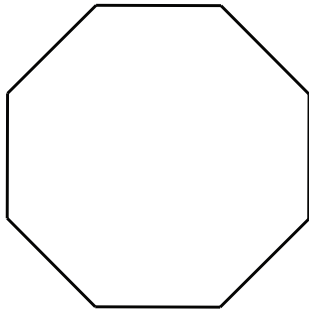
Large & Small Eye / Nose / Decorative



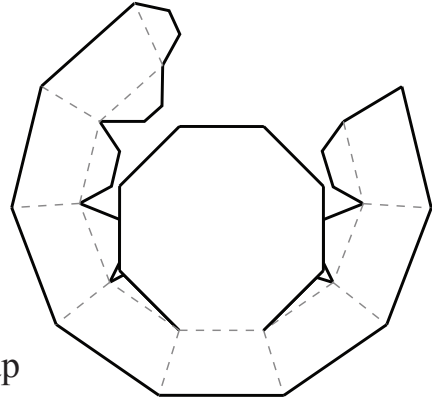
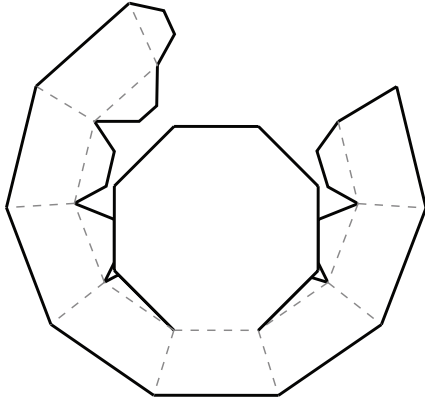
TIP:

If you stack a Totem Piece, directly above or below a Shape Building Piece, you don't need to use an End-Cap

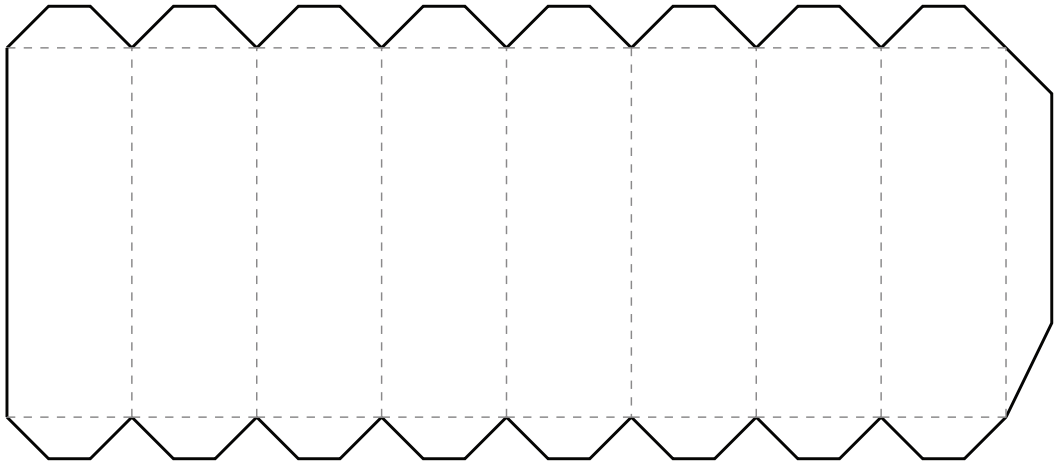
TINY TIKI IDOL PAPER TOY



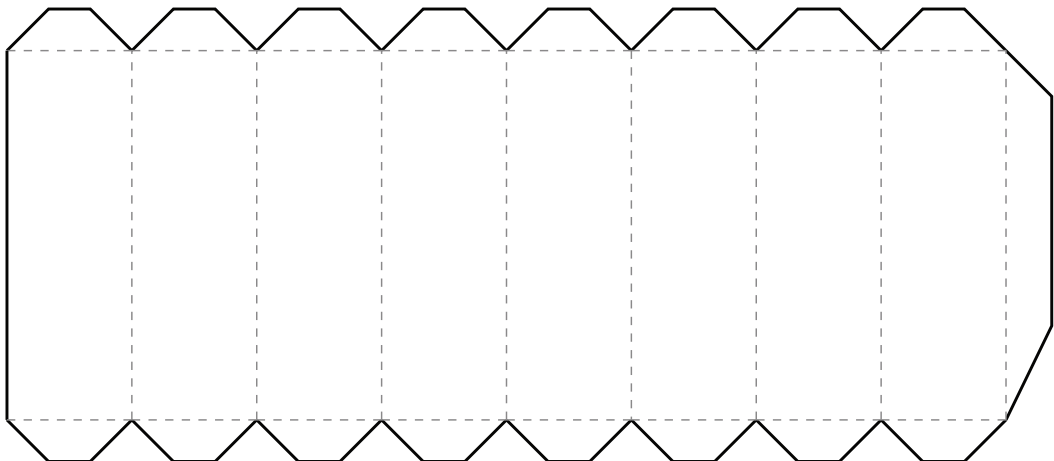
Flat end cap



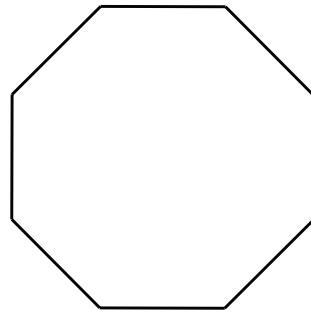
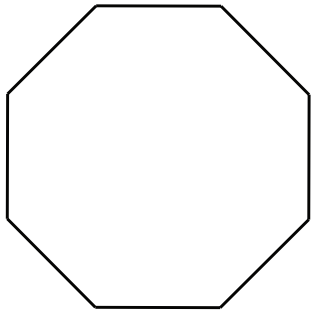
Beveled End-cap



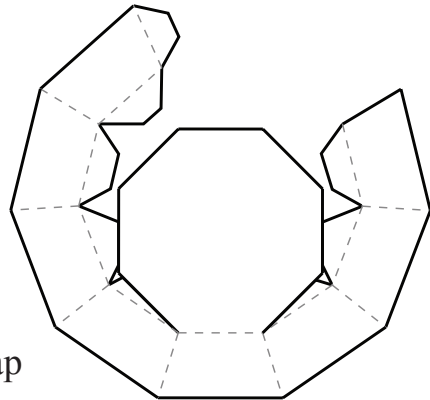
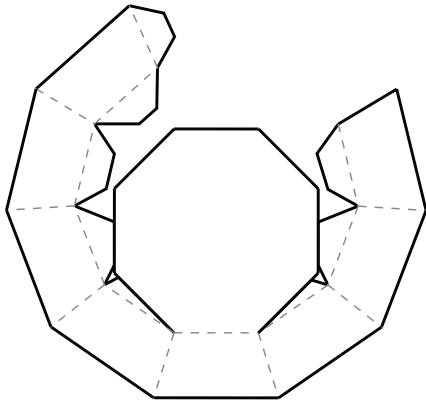
Large Totem Piece



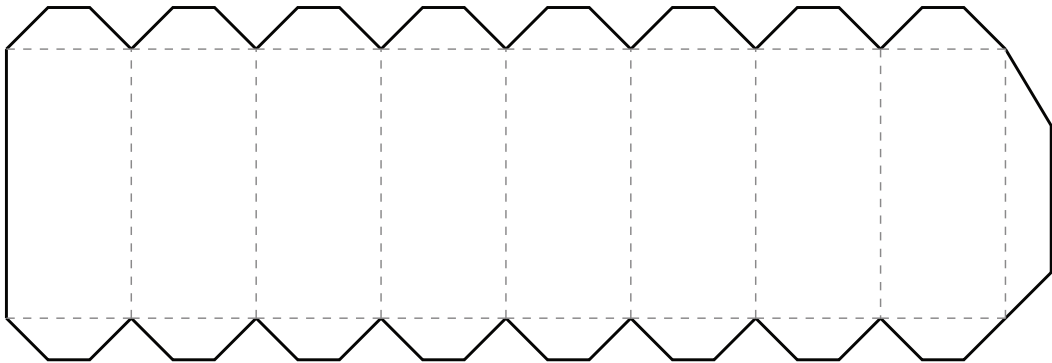
TINY TIKI IDOL PAPER TOY



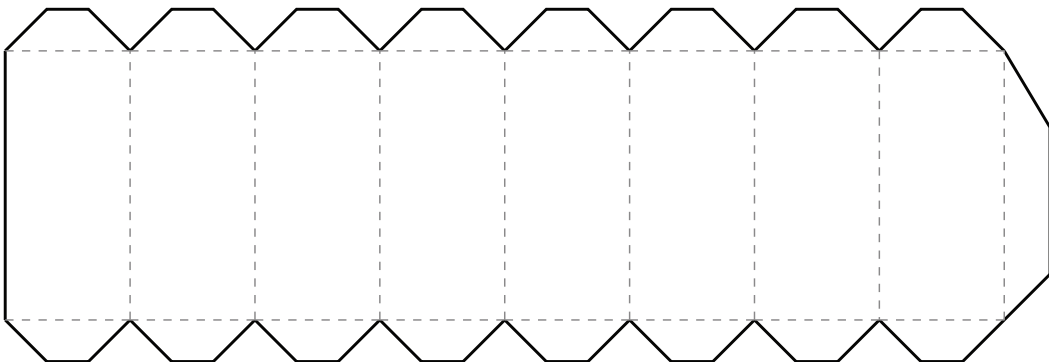
Flat end cap



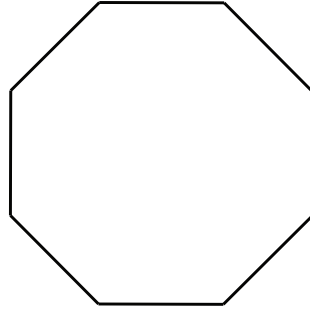
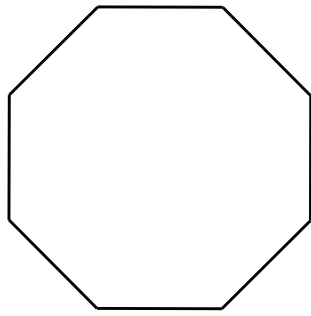
Beveled End-cap



Medium Totem Piece



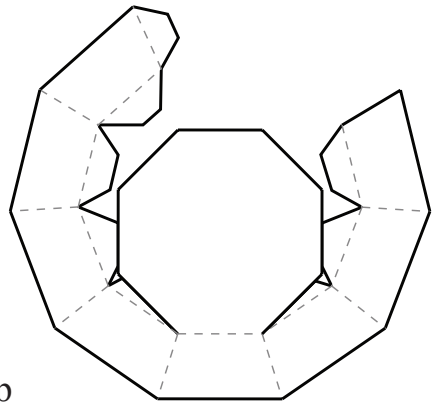
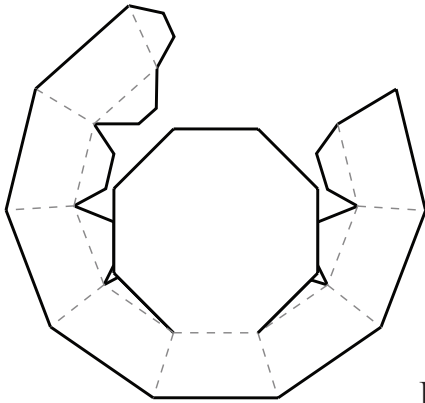
TINY TIKI IDOL PAPER TOY



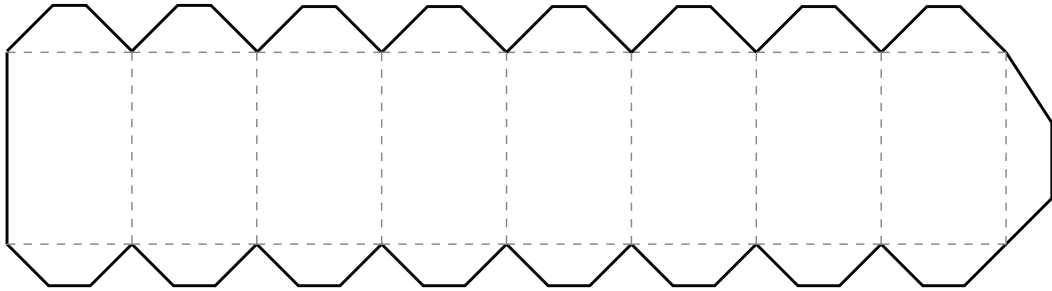
Flat end cap

TIP:

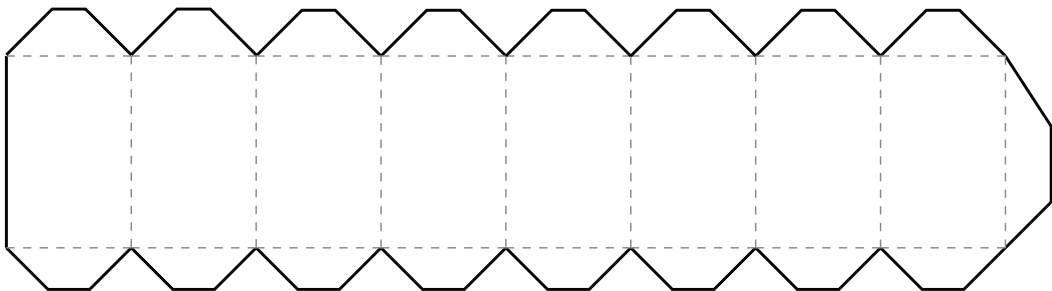
All the Tips are just suggestions. Creativity is encouraged, so have fun with it.



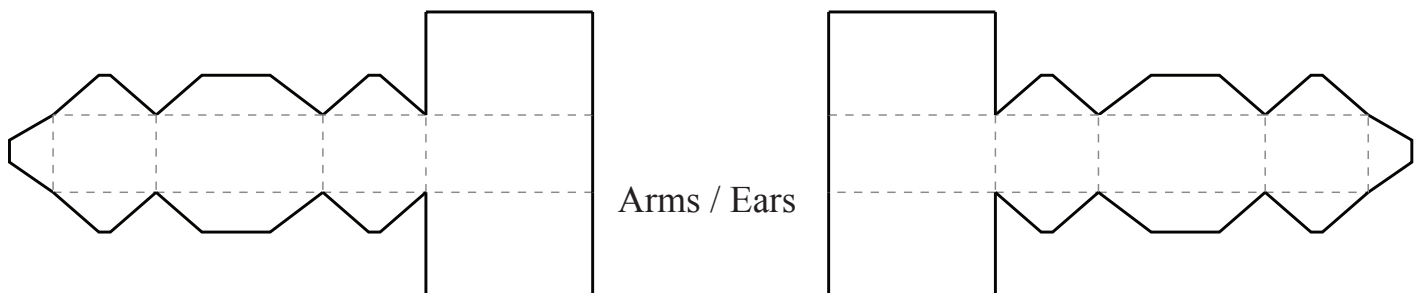
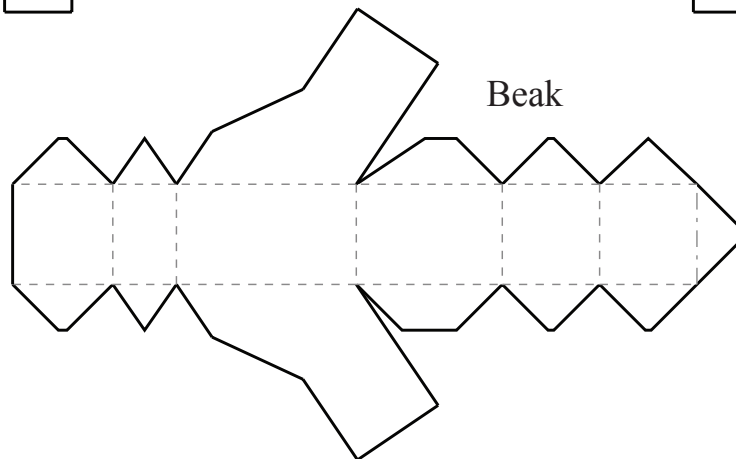
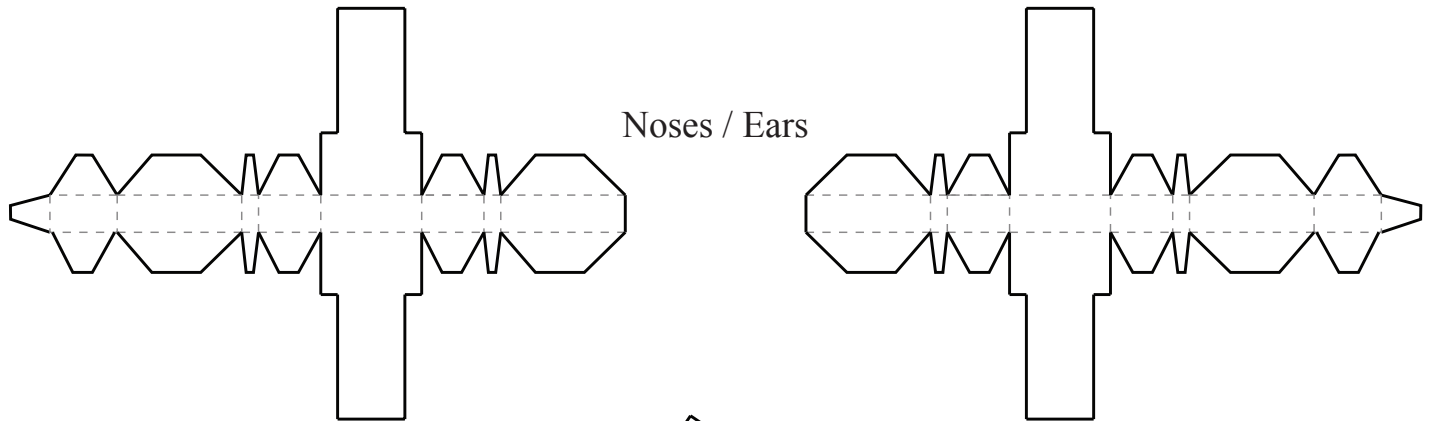
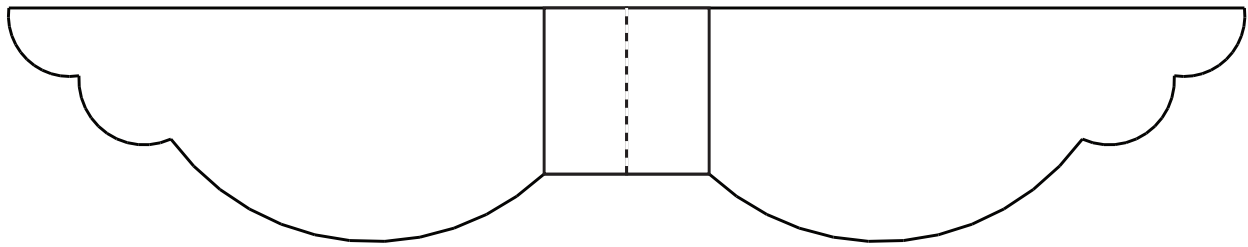
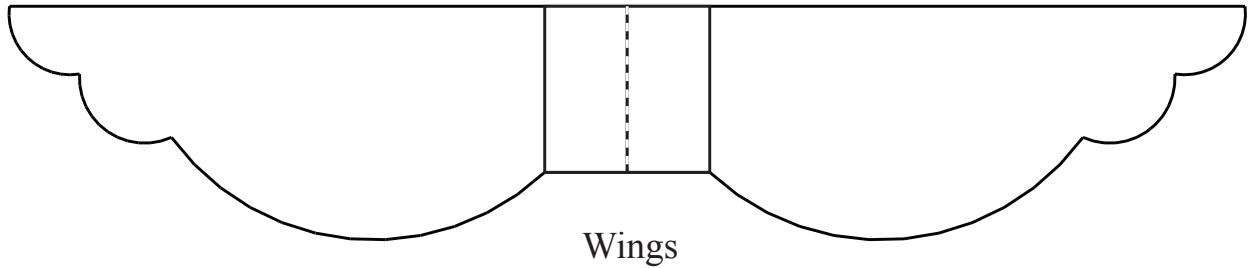
Beveled End-cap



Small Totem Piece



TINY TIKI IDOL PAPER TOY

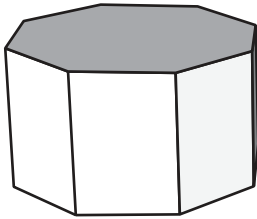


TIP:

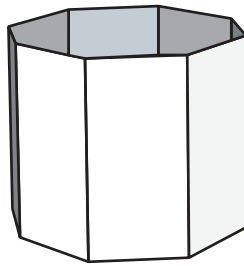
Make your Tiki even more unique by
designing your own extras

TINY TIKI PARTS LIST

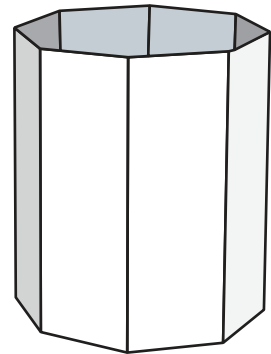
Flat end cap



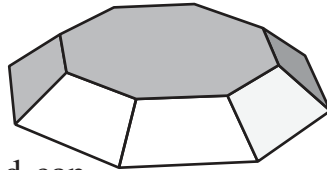
Small Totem Piece



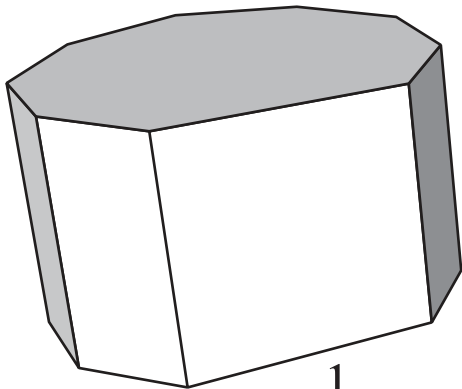
Medium Totem Piece



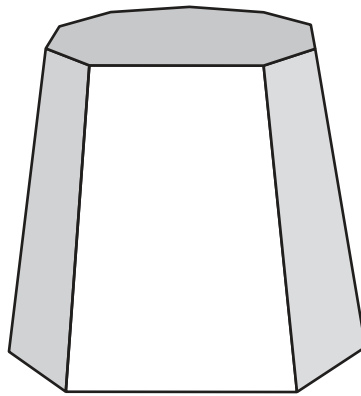
Large Totem Piece



Beveled End-cap

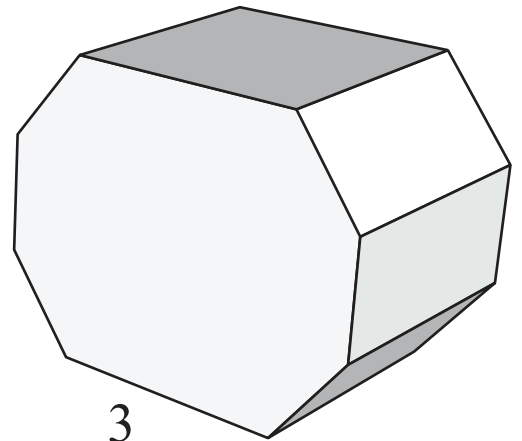


1



2

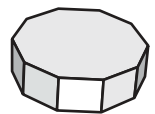
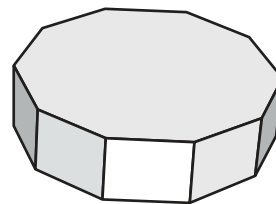
Shape Building Pieces



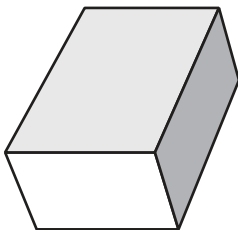
3



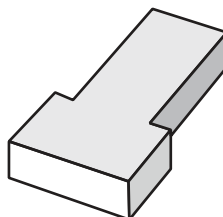
Wing



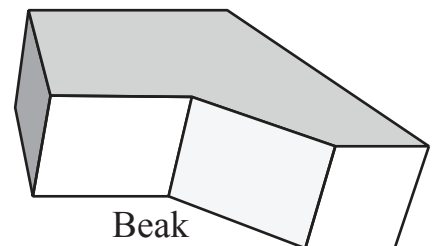
Large & Small Eye / Nose



Arm / Ear



Nose



Beak