

# KAPITEIN KNOEST (REDBEARD)

PAPERCRAFT "MINI"FIG BY NINJATOES



# PIRATES

PAPERCRAFT PIRATE CAPTAIN KNOEST  
(REDBEARD)

1989 was the year minifigs got cool.

It was the year that LEGO launched their new Pirates line, and for the first time, the minifigs had facial features other than the neutral, non-offensive "standard grin" pattern!

The Pirate Captain "Knoest" was the first to get an eyepatch, a rugged, red beard, and even a wooden leg and a hook for a hand.

It doesn't get much more pirate than that, and that's what still makes him the coolest minifigure LEGO ever created! :o)

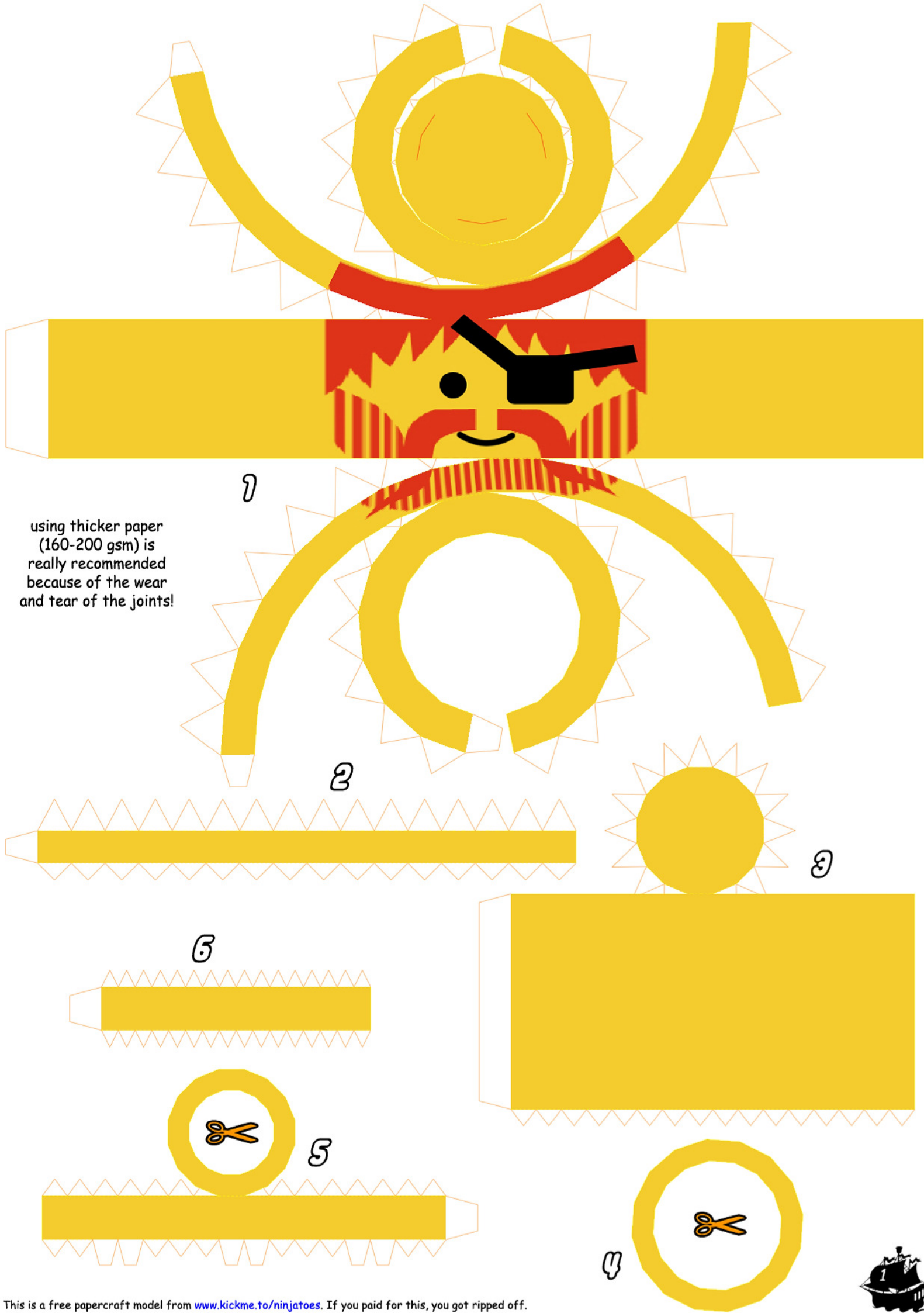


dot-dash lines:  
fold up (valley fold)

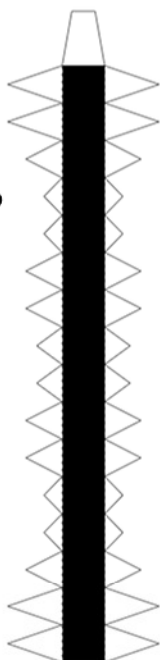


dashed lines:  
fold down (mountain fold)

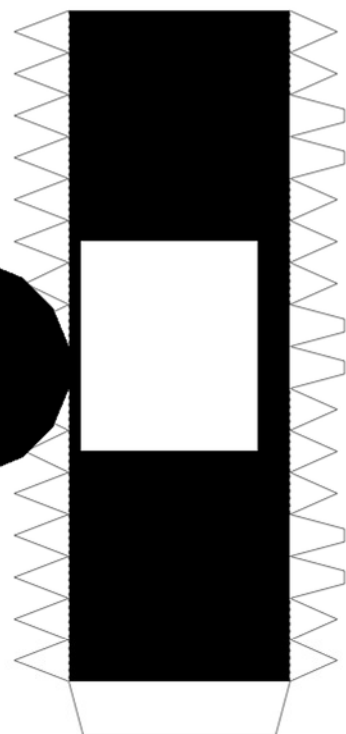
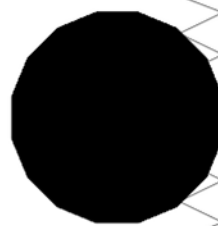




15

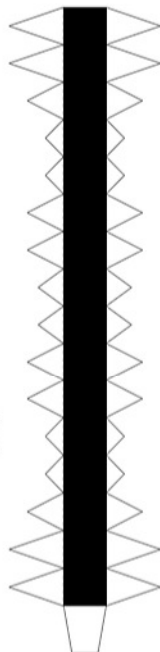


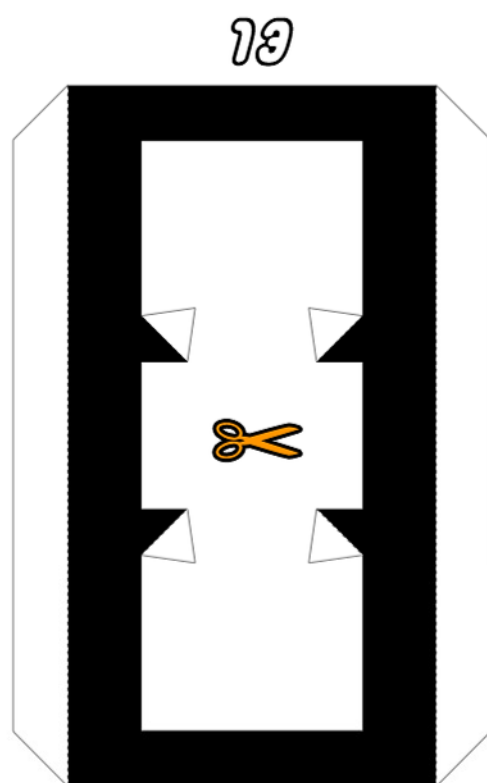
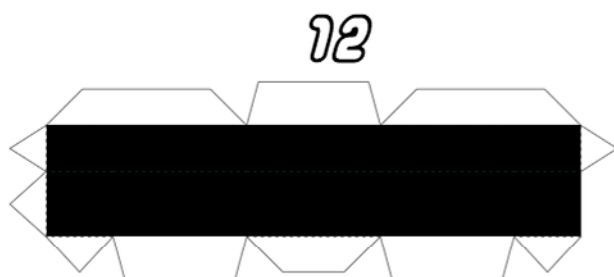
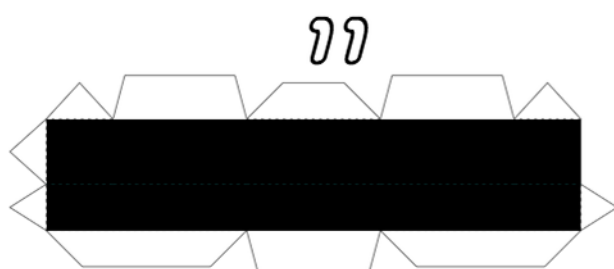
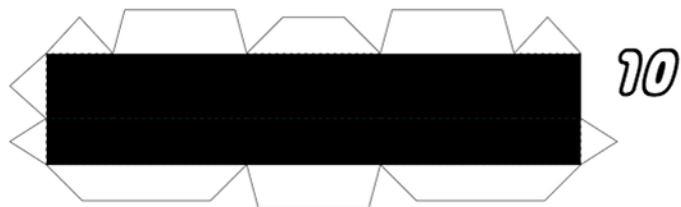
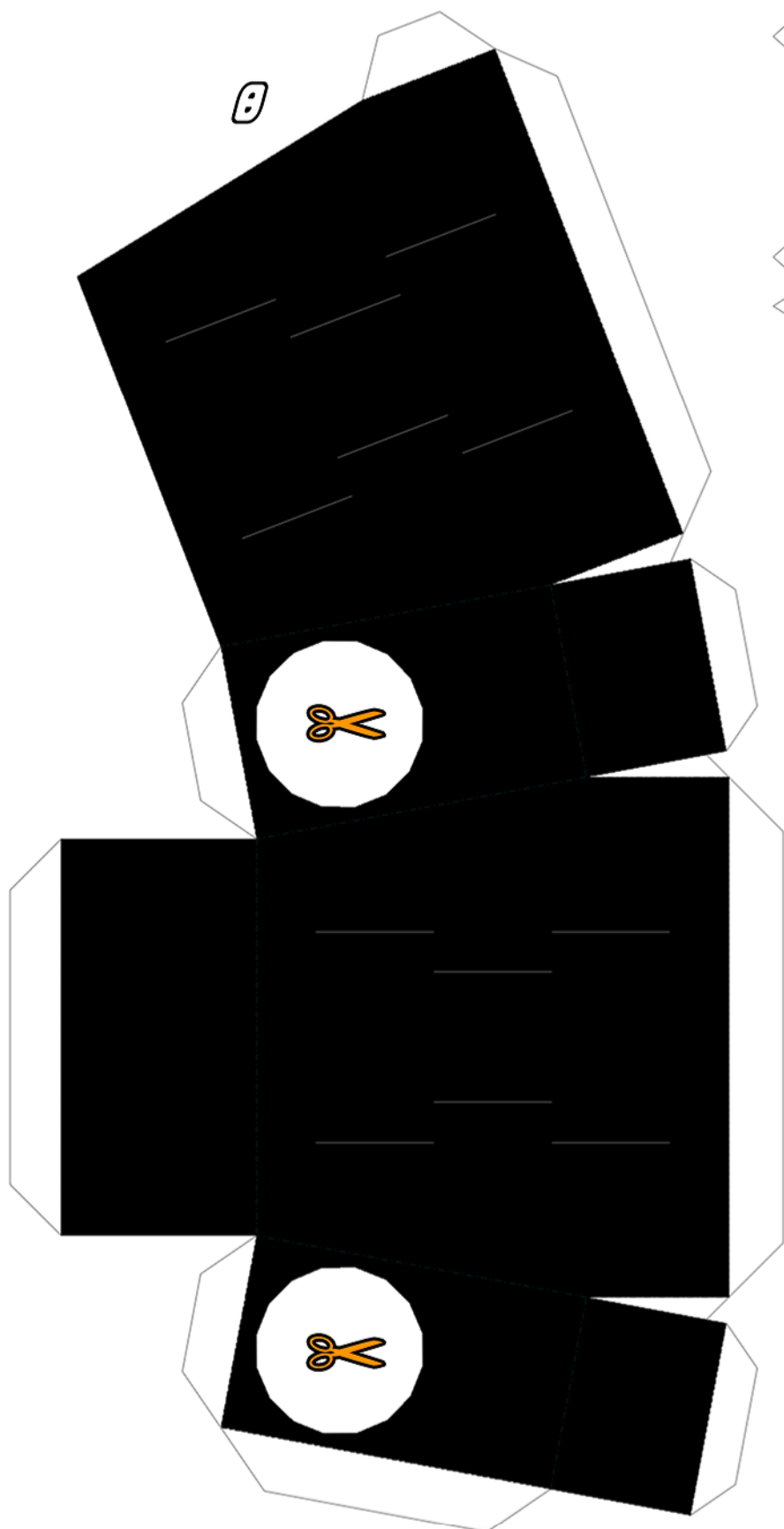
16

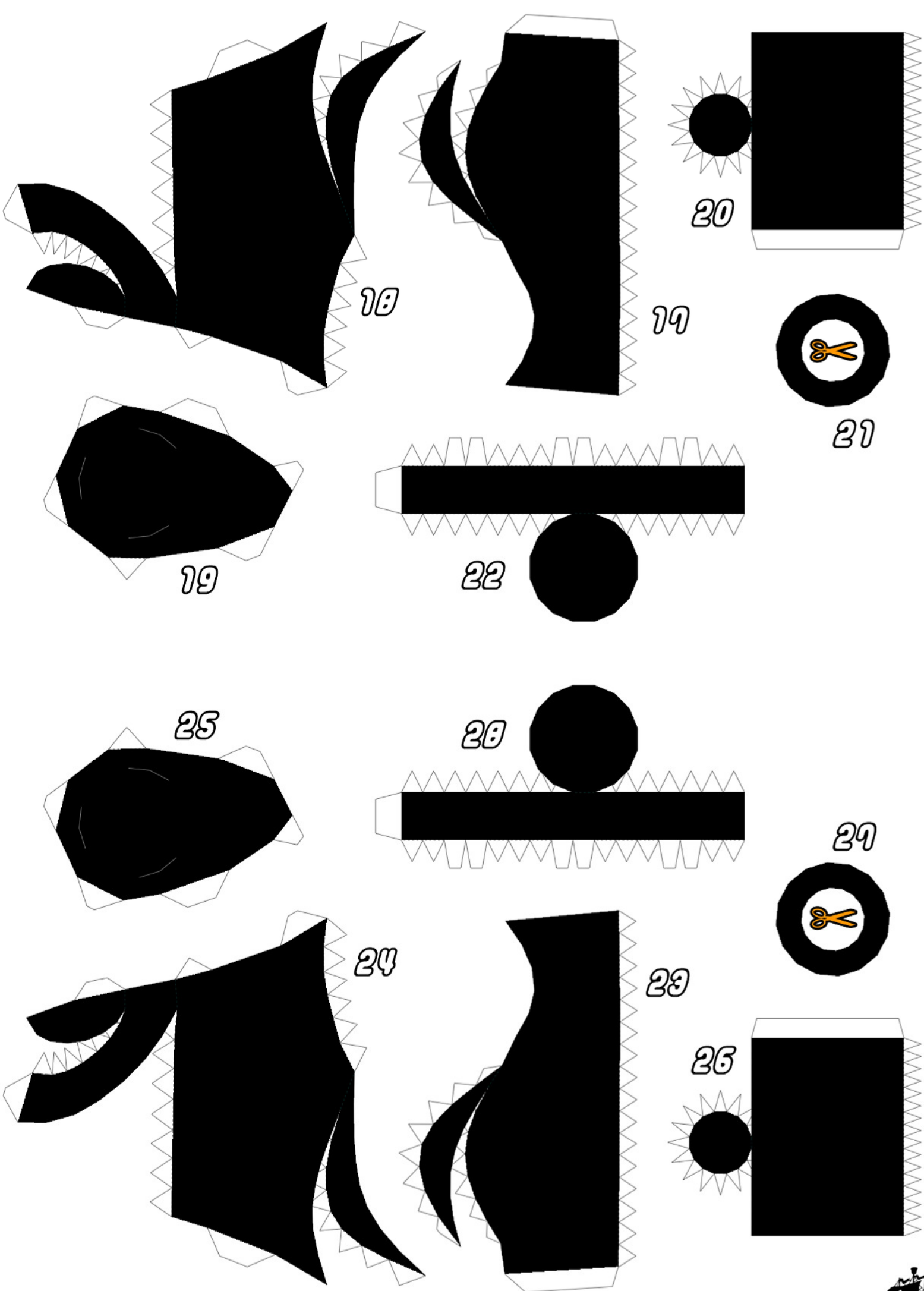


9

14

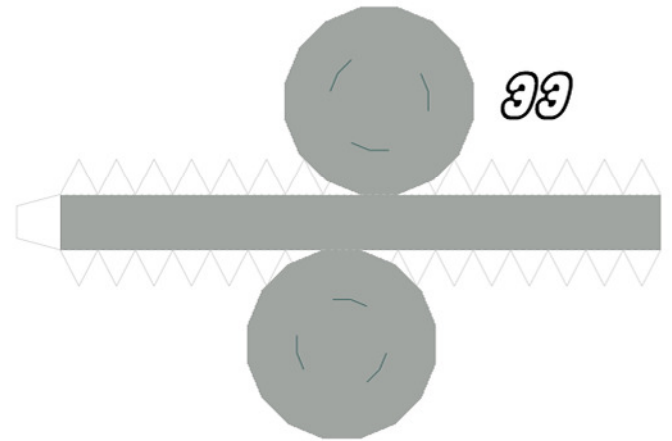
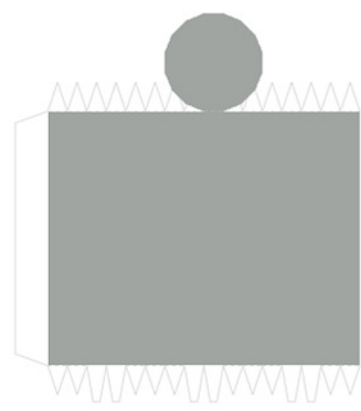






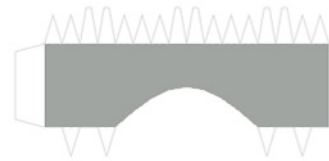


34

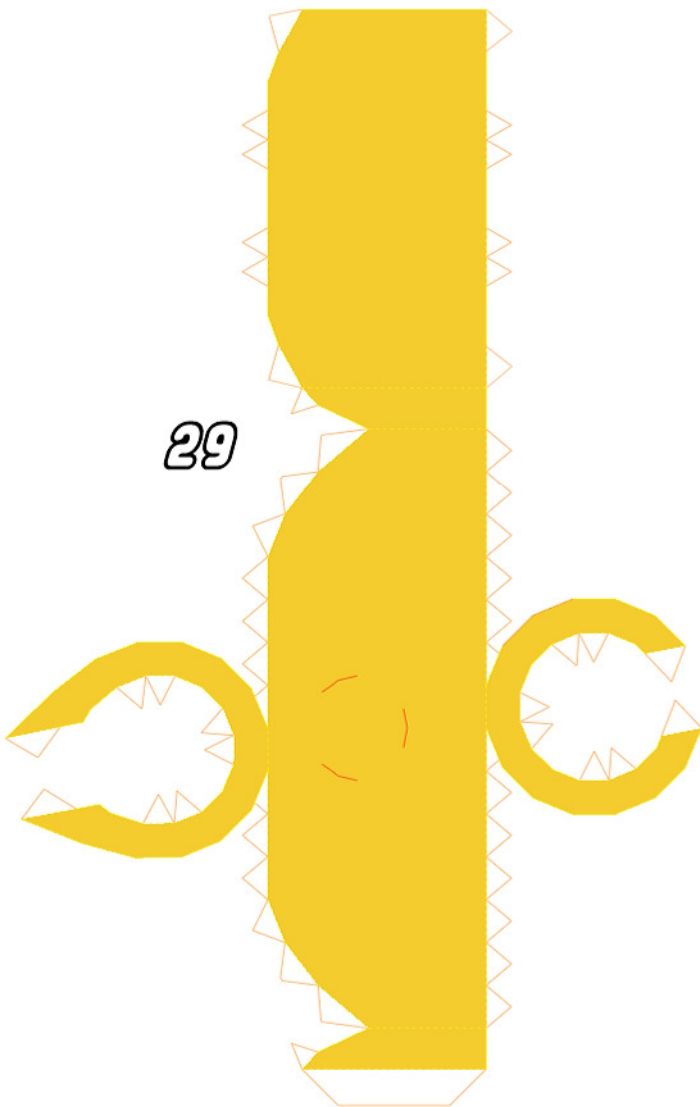


33

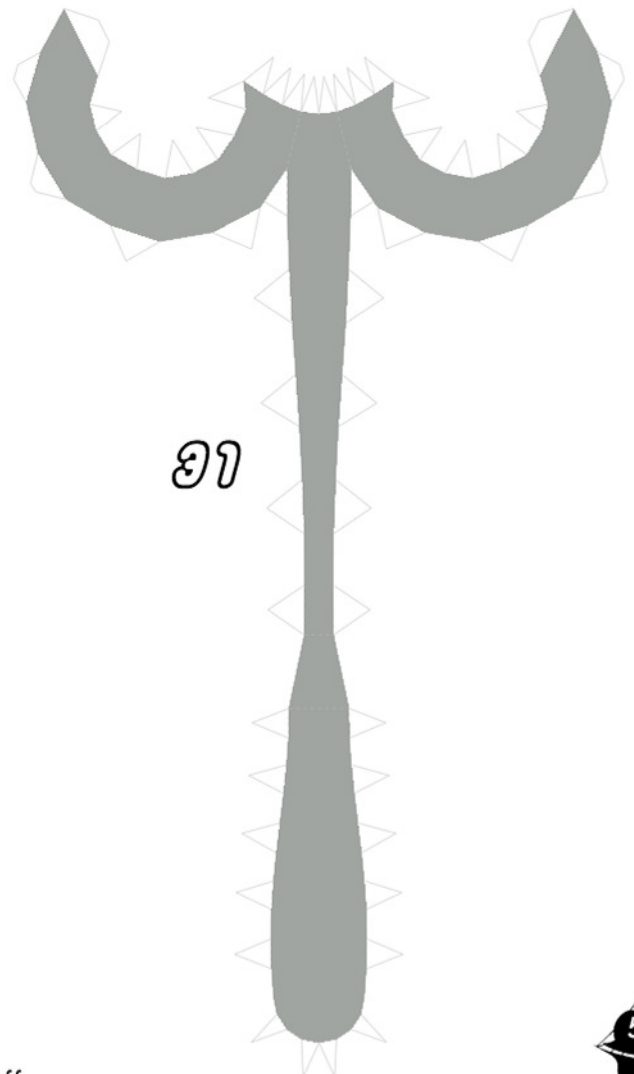
32



29

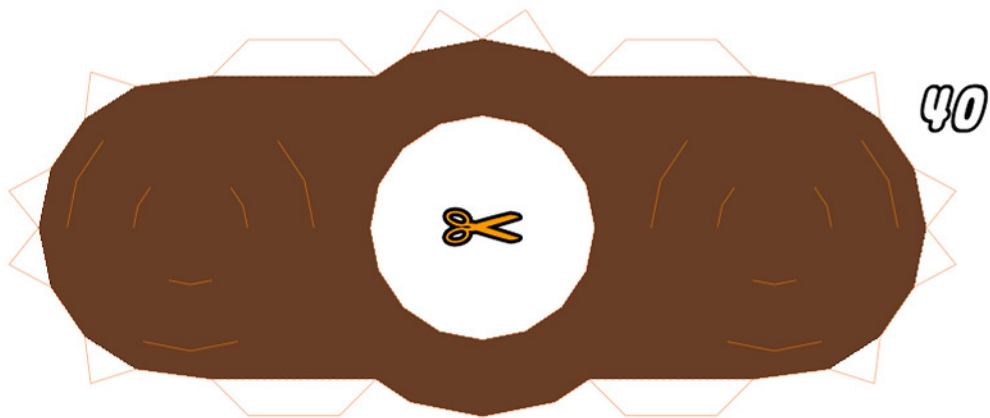


31



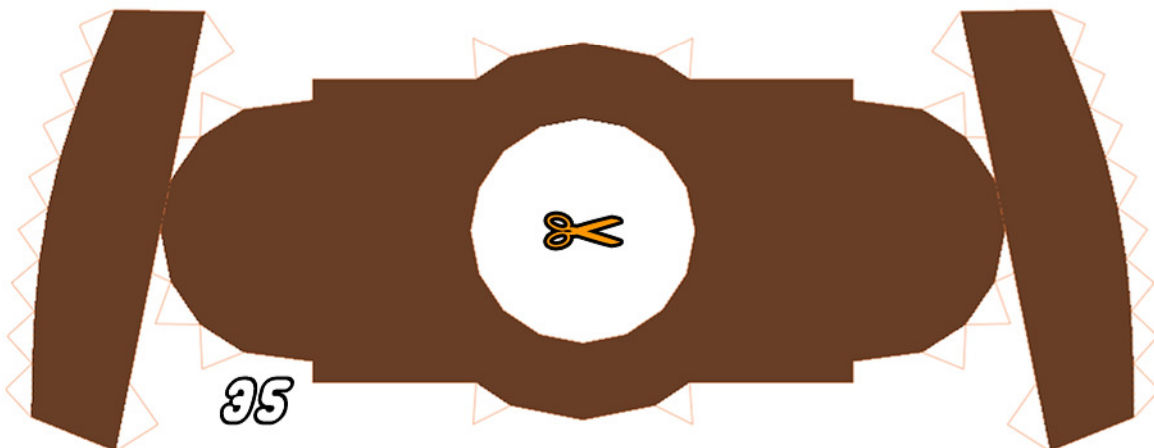


38



40

39



35



36



37

41



42



43



44



47



48

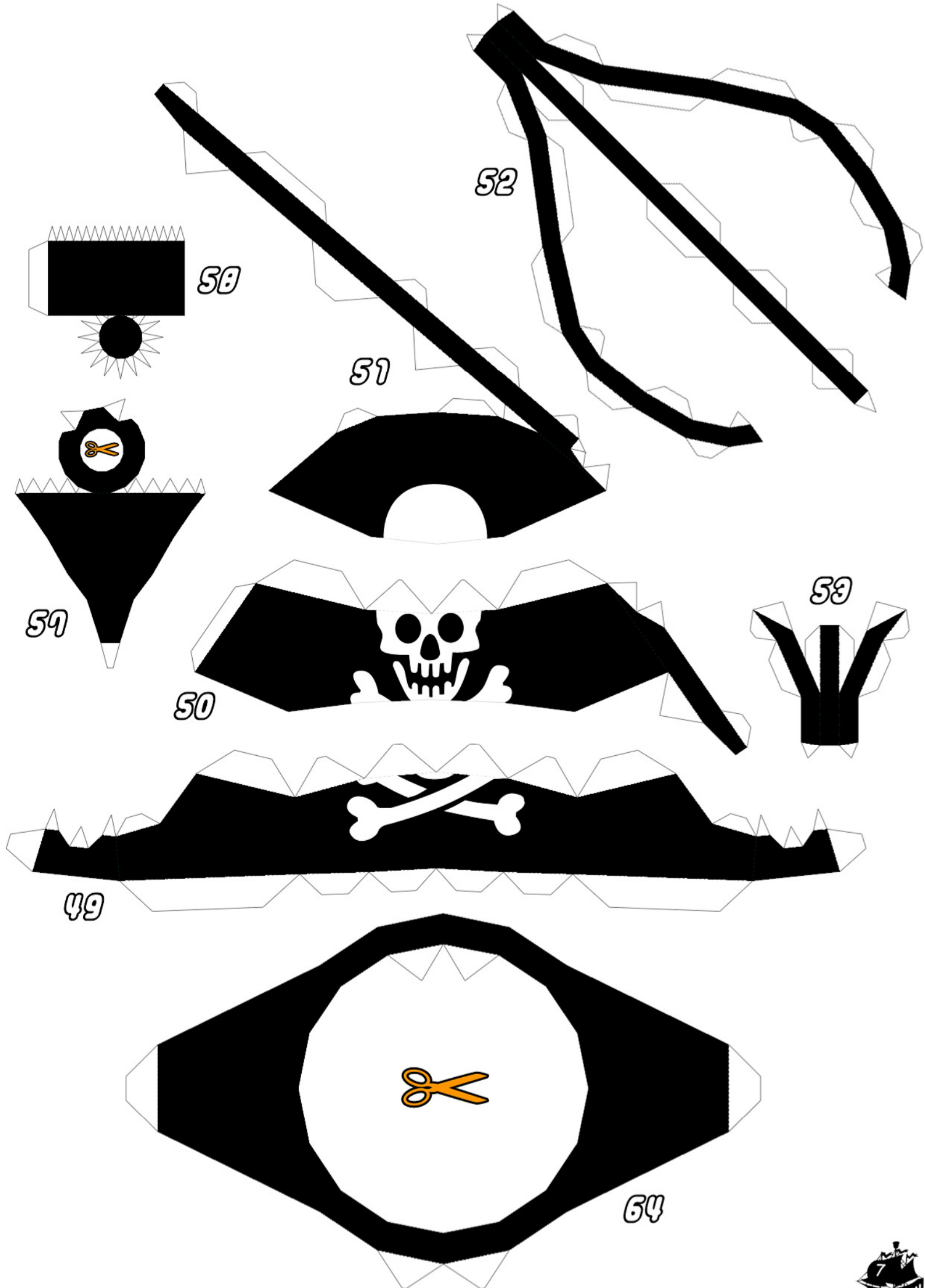


45

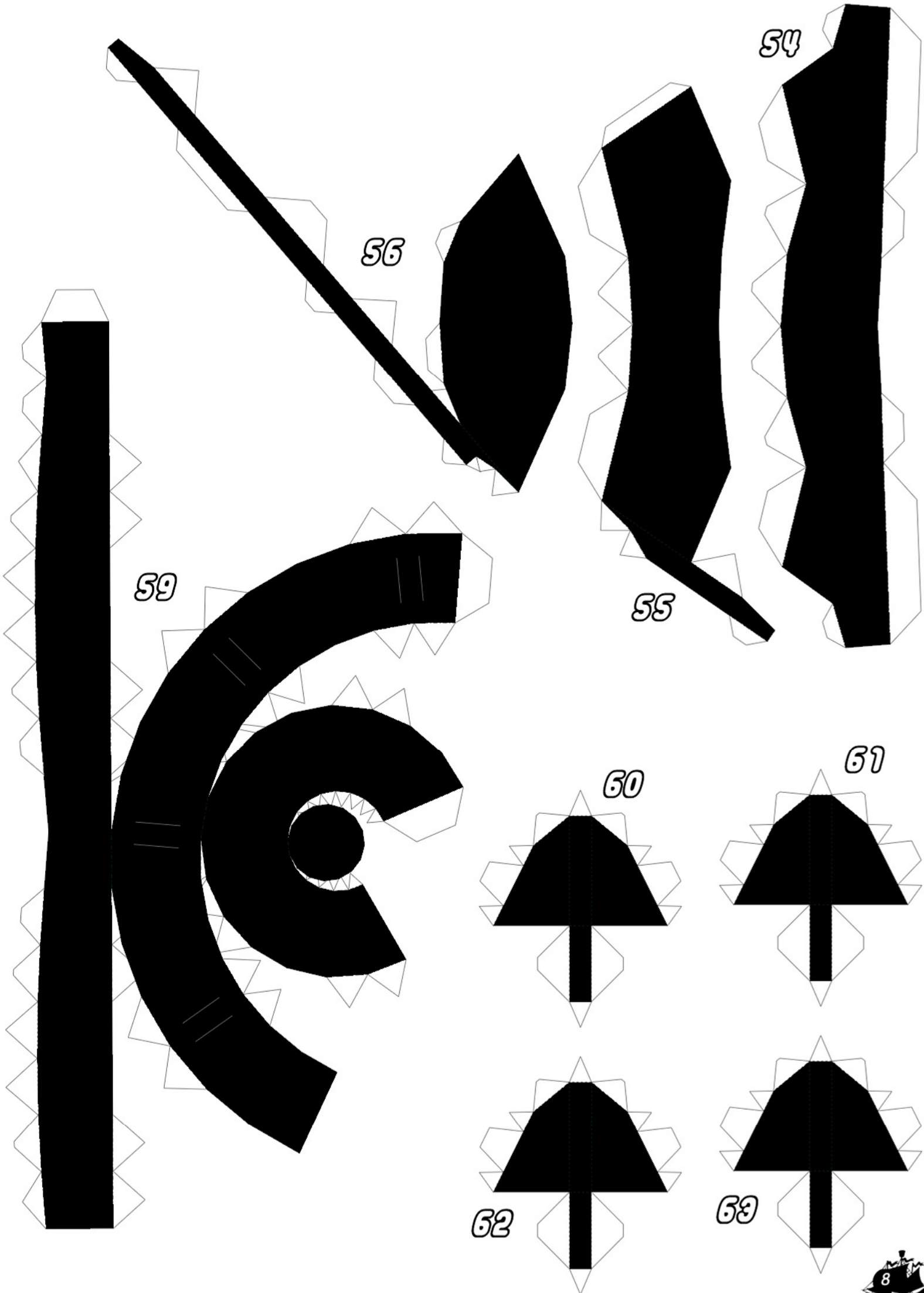


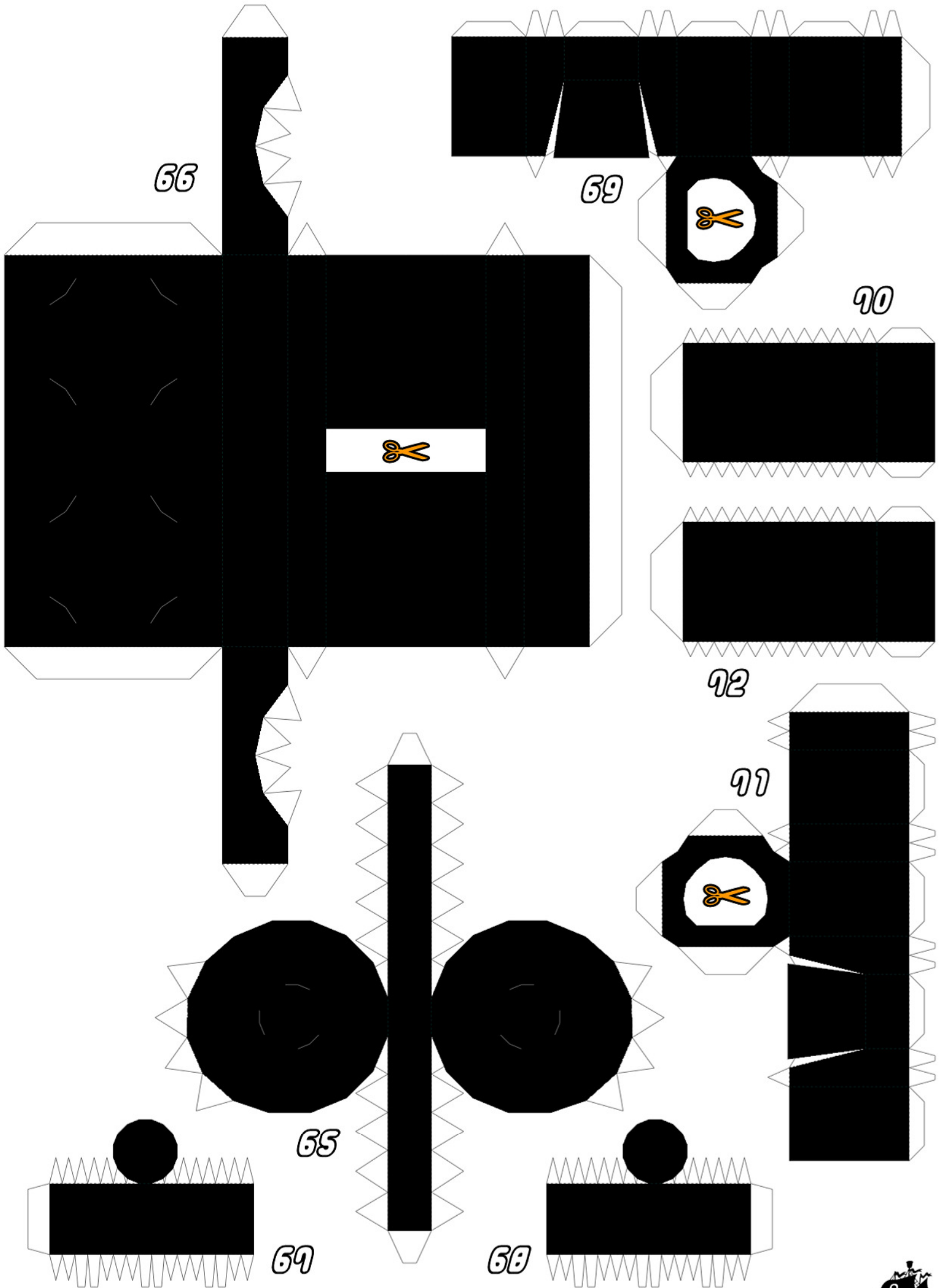
46



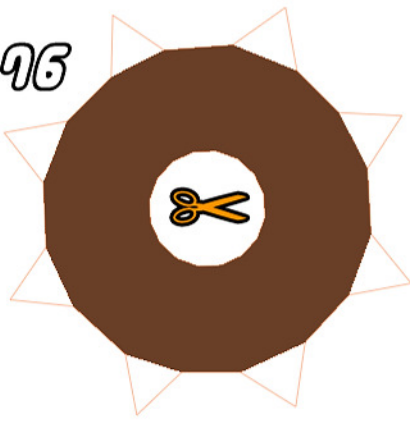




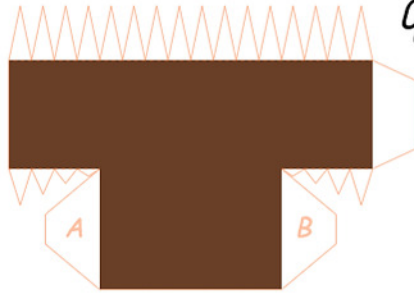




၇၆



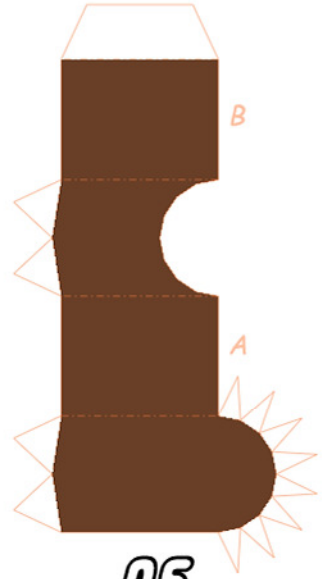
၇၇



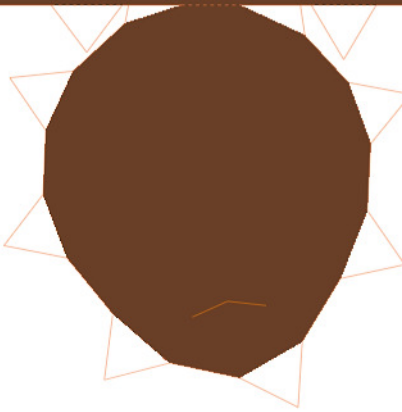
B

A

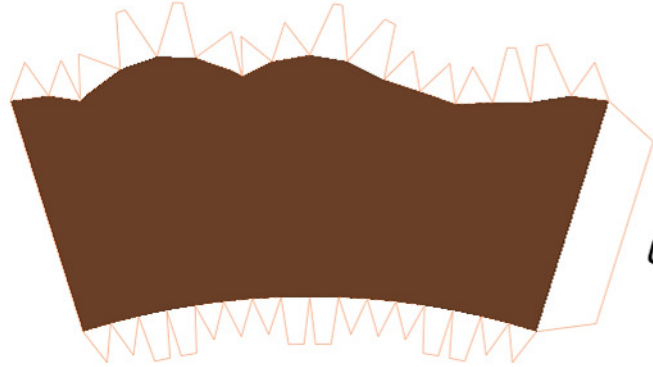
၇၅



၇၈



၇၇



၇၉



၈၀



၇၉

