



Chinese Phoenix

Known in Chinese as Fenghuang, the Chinese Phoenix is a mythological bird, that is said to reign over all other winged creatures. The males are known as Feng and the females as Huang. They are said to be similar in appearance to a peacock, but are about 130~170cm tall and colored in five vibrant shades. They sing a melody that spans five different notes. The Fenghuang is said to drink from sacred springs and feed on bamboo seeds, and nest only in wu t'ung trees. In the Classic of Rites, the Fenghuang is named as one of the four holy animals of Chinese mythology, along with the unicorn Qilin, the tortoise Gui Xian, and the dragon Long.

With this papercraft you can create a bright, five-colored Fenghuang in flight position. The model measures approx. 65cm in length and 60cm across.

Assembly Instructions

- 1) Carefully cut out the parts.
- 2) Make mountain folds and valley folds along the dotted lines, as indicated by the directions.
- 3) Assemble the parts in the order shown by the numbers on the glue tabs. (Read the assembly instruction for more information.)
- 4) Attach the parts in order. (Read the assembly instruction for more information.)
- 5) Your Paper craft model is finished.

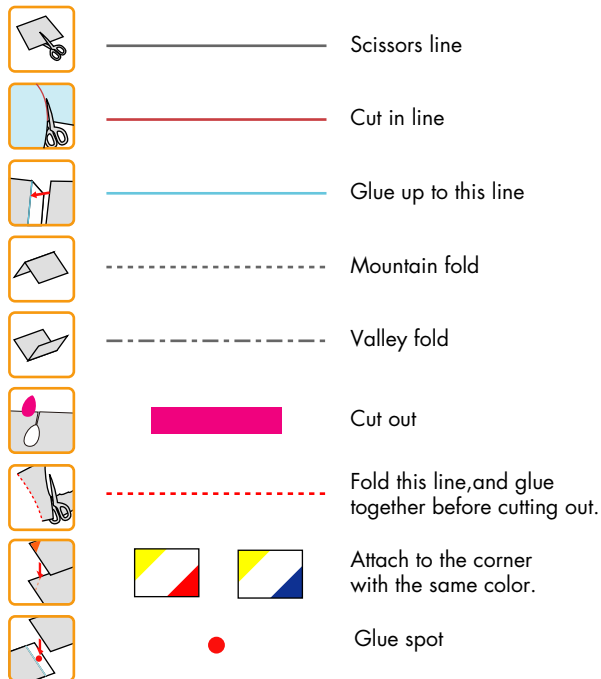
Tools

Scissors, glue (We recommend a strong adhesive such as woodwork glue.)

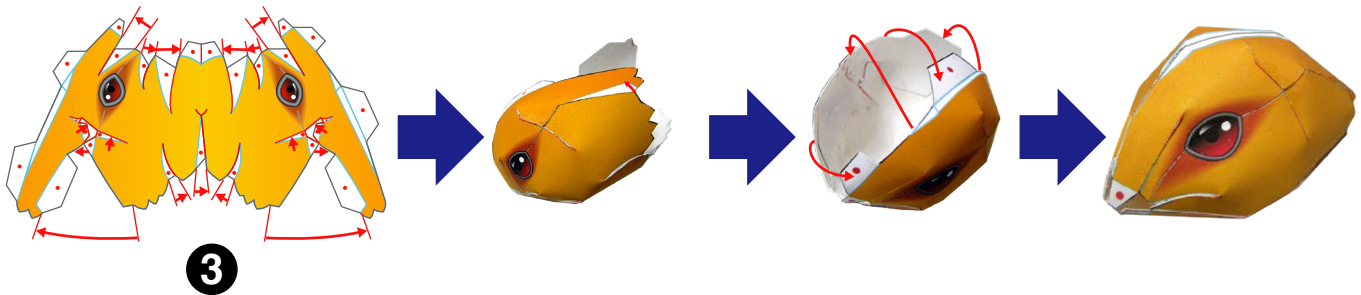
Caution

Keep glue away from small children.
Be careful not to cut your fingers when using scissors.

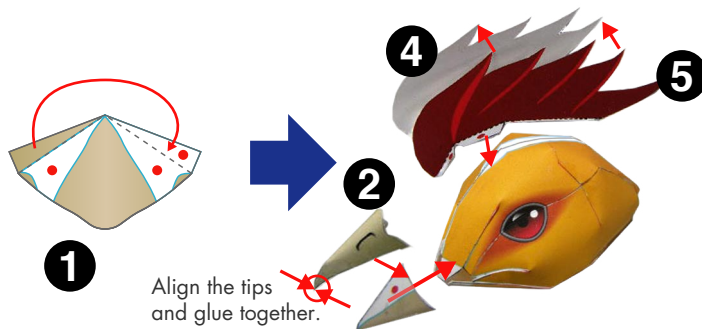
Notation Key



Assemble ③.

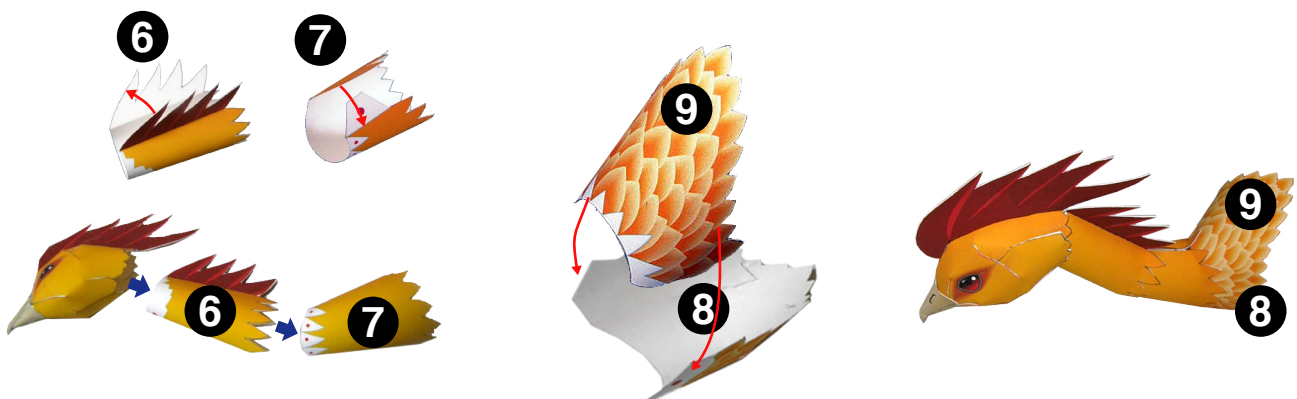


Assemble ①, ②, ④ and ⑤, attach them to ③.

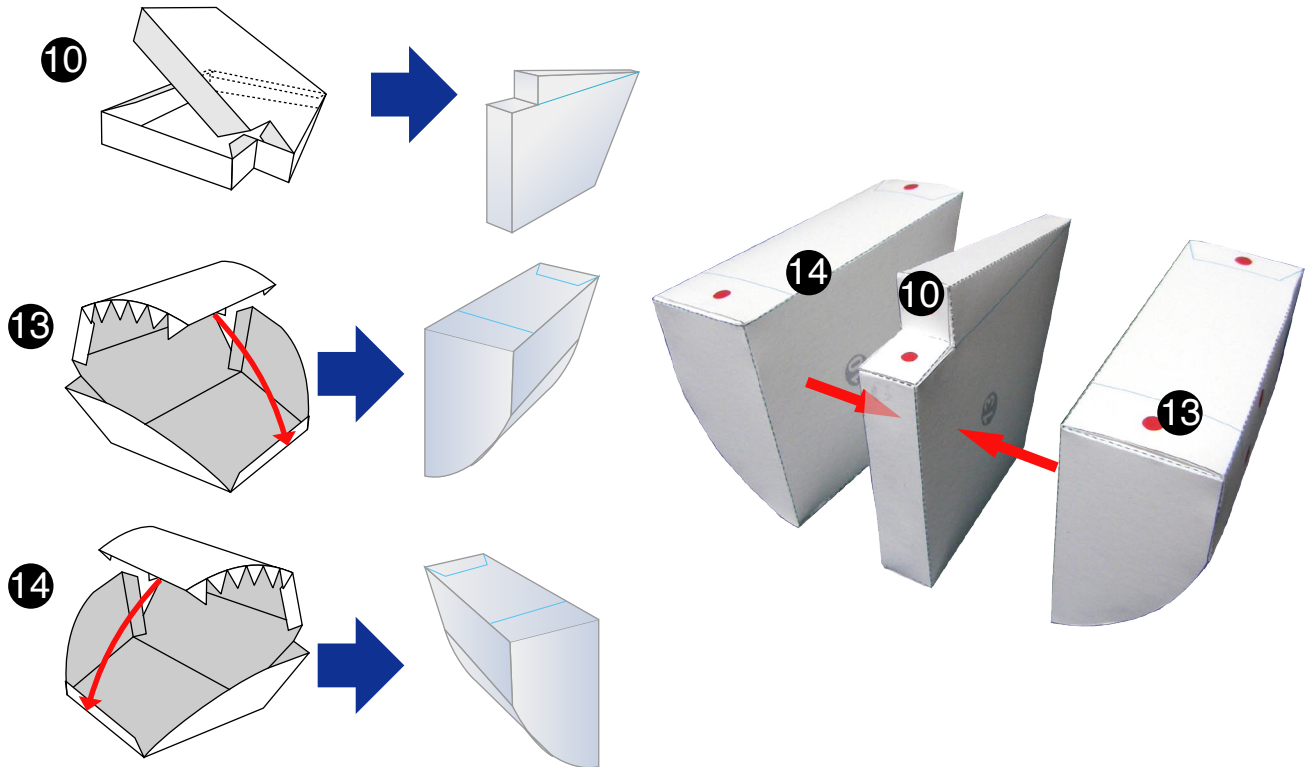


Completed head

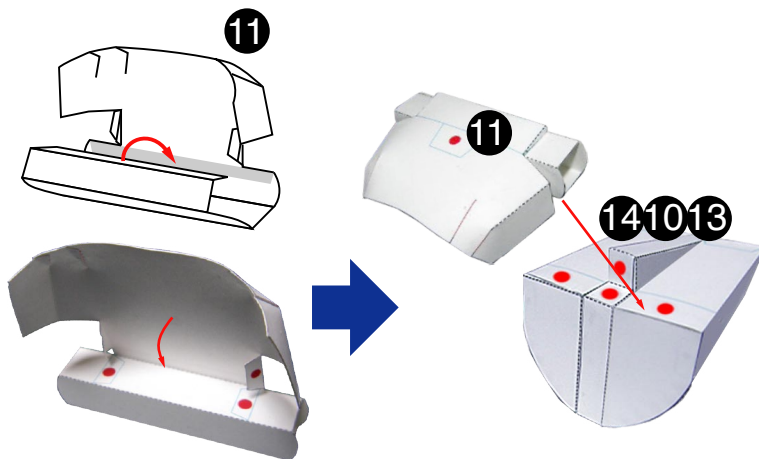
Assemble ⑥ and ⑦, attach them to the head, assemble and attach ⑧ and ⑨.



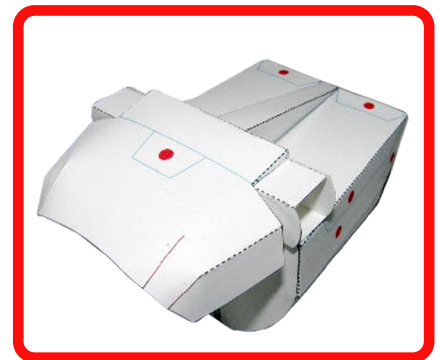
Assemble ⑩, ⑬ and ⑭, attach them.



Assemble ⑪, and attach it to ⑩ ⑬ ⑭ .

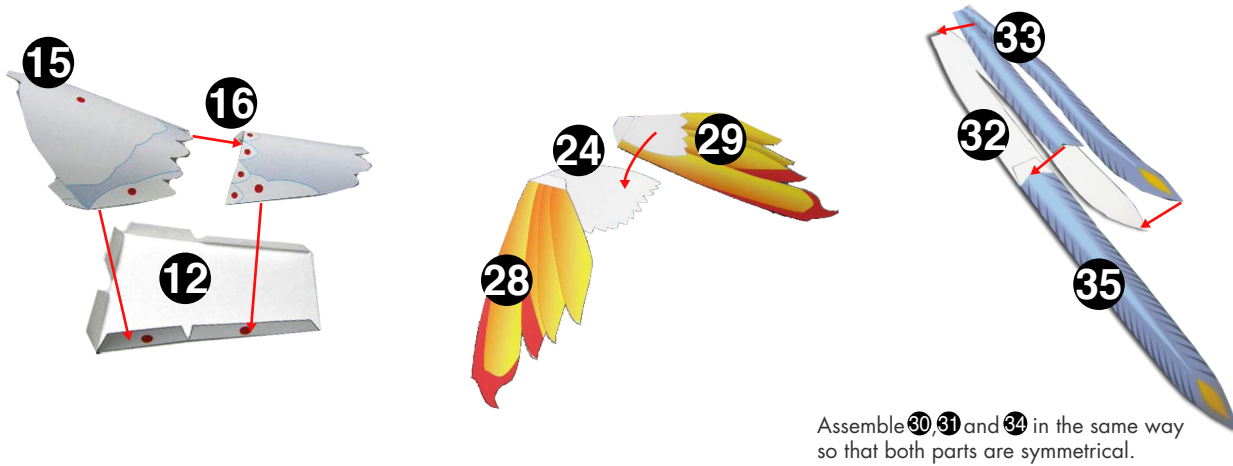


The shape of ⑪ is very complicated, so take extra care when assembling it, following the assembly order shown in the above diagram.

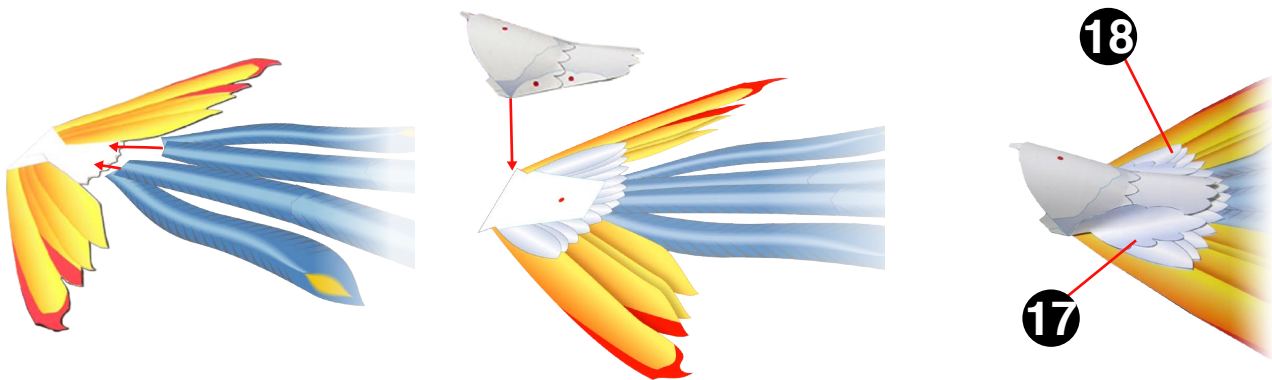


Completed internal frame

Assemble 12, 15 and 16, glue 24, 28, and 29 together, and glue 32, 33, and 35 together.



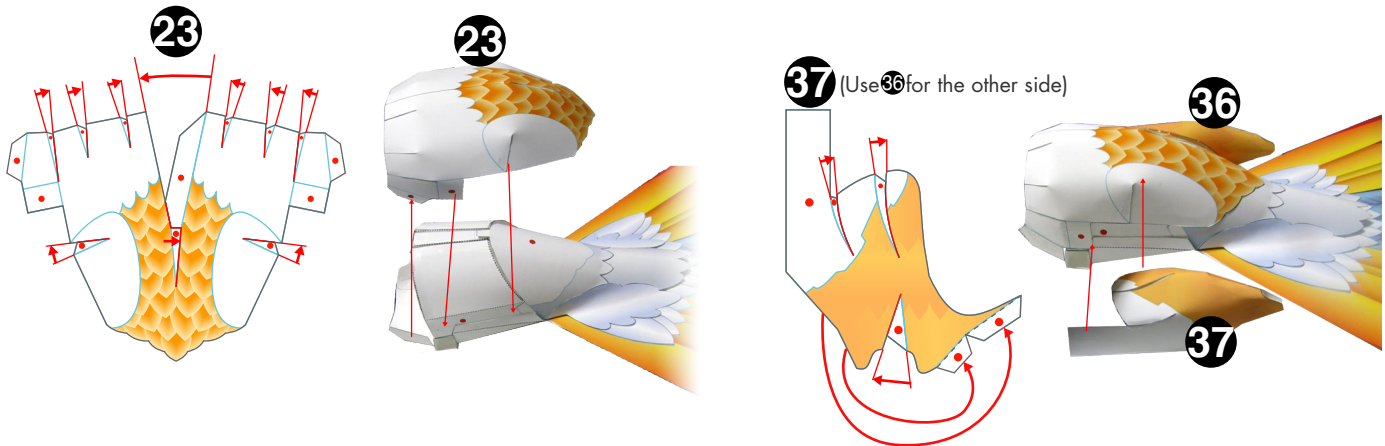
Glue the decorative feathers to the tail feathers, and attach 12 15 16. Attach 17 18.



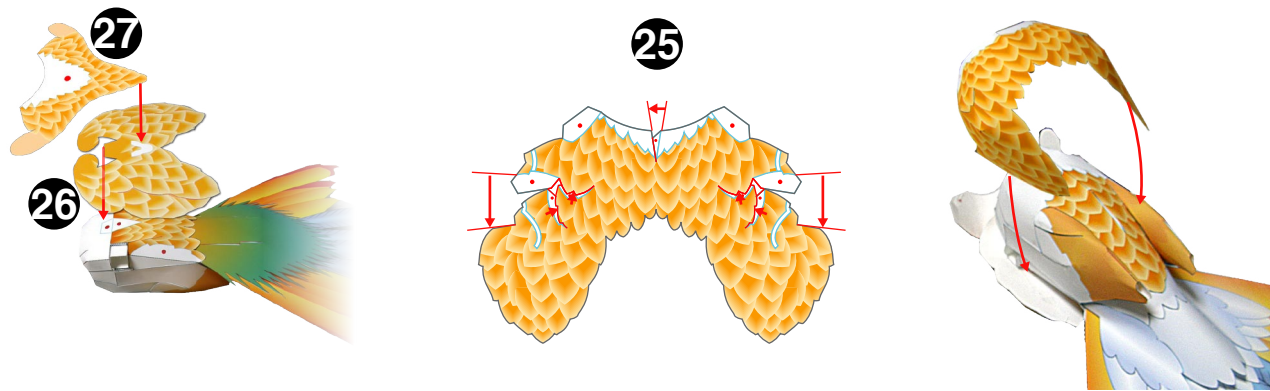
Glue the tail feathers to the internal frame, and assemble 21 and 22.



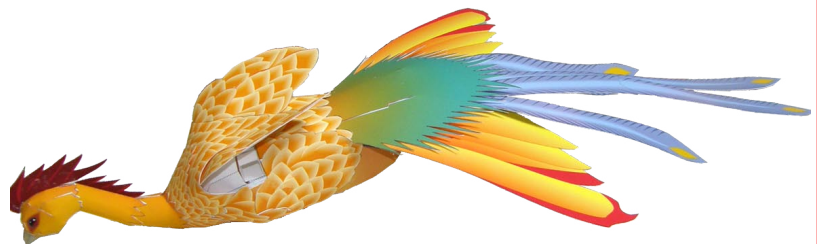
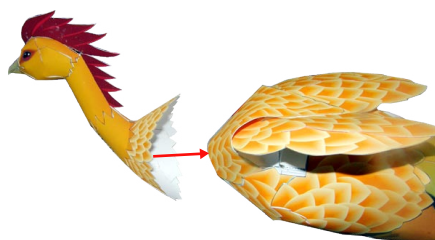
Assemble 23 and attach it to the body, then assemble 36 and 37 and attach them to the body.



Assemble 26 and 27, and attach it to the body after gluing it together. Then attach 25.

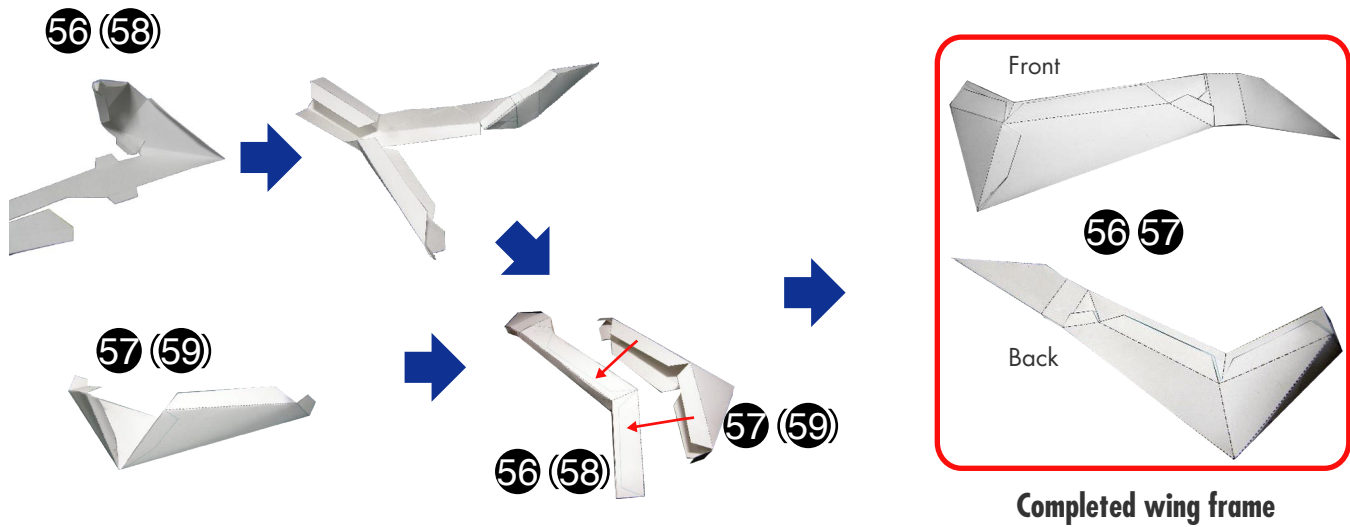


Attach the head and neck to the trunk to complete the body.



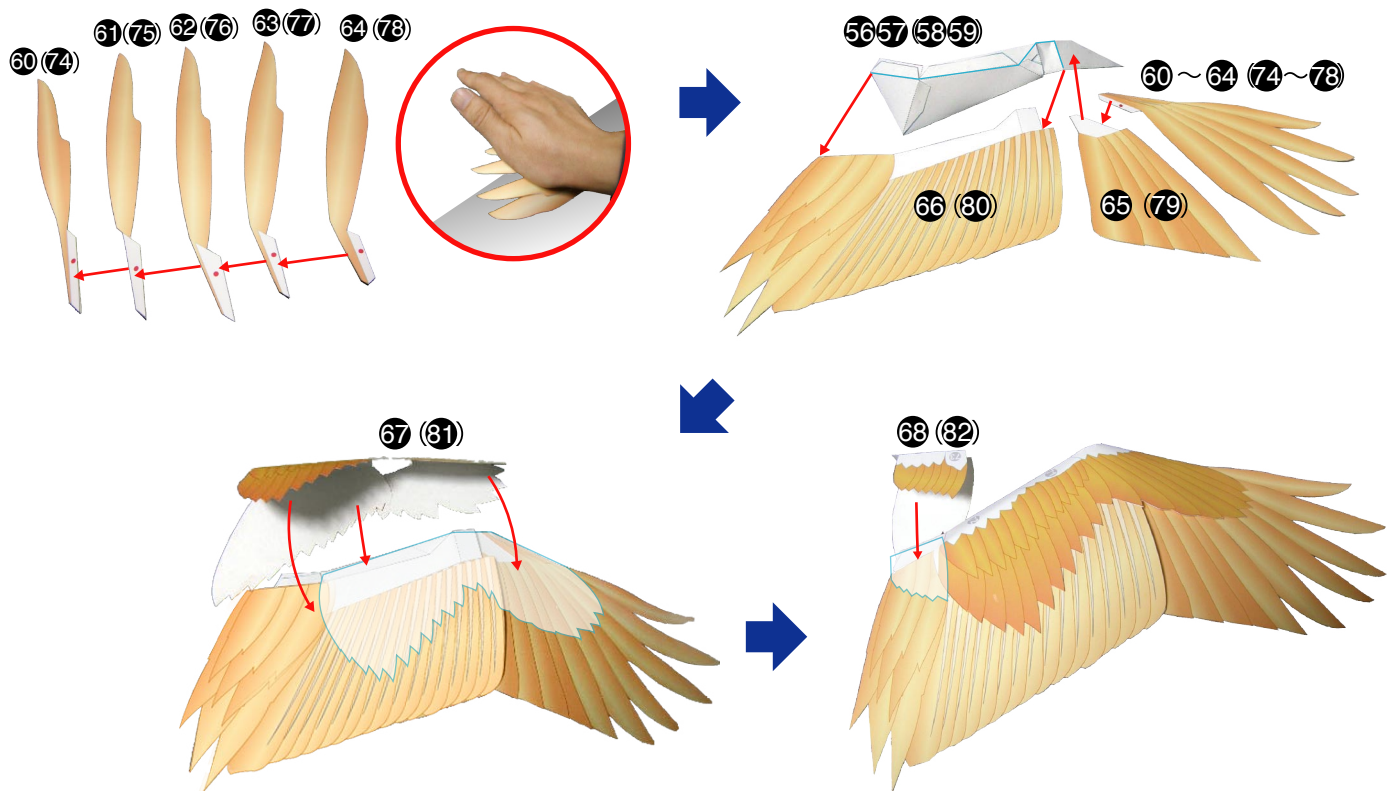
Completed body

Assemble 56 and 57, and assemble the wing frame.



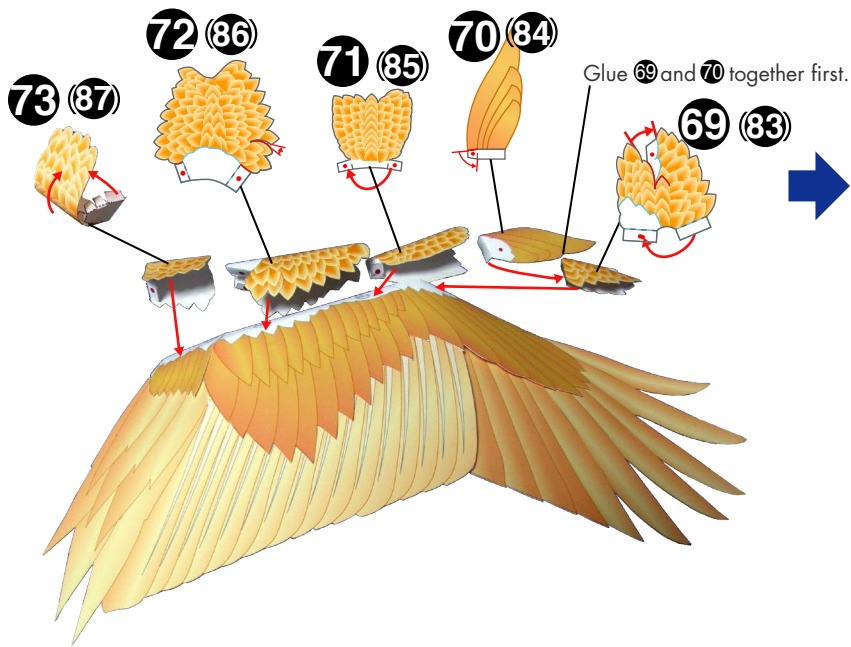
Assemble 58 and 59 in the same way so that both parts are symmetrical.

After gluing 60~64 together, attach them to 65, and attach 65~68 to the wing frame.



Assemble 74~82 in the same way so that both parts are symmetrical.

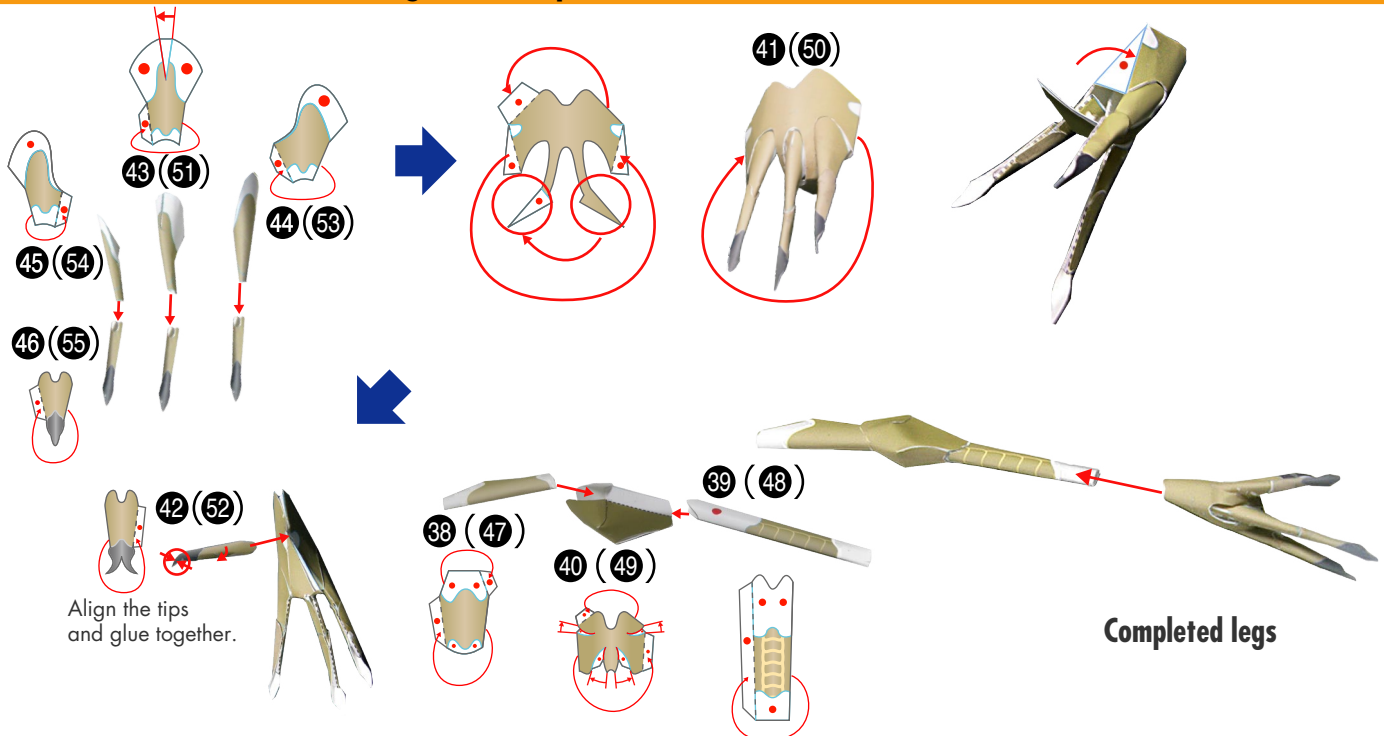
Assemble 69 ~ 73, and the wings are complete.



Assemble 83 ~ 87 in the same way so that both parts are symmetrical.

Completed wings

Assemble 38 ~ 46, and the legs are complete.

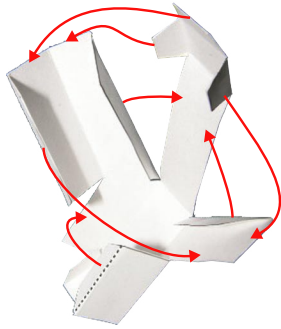


Assemble 47 ~ 55 in the same way so that both parts are symmetrical.

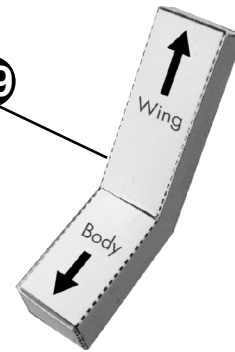
Completed legs

Attach the assembled 88 to 89 to make the connector part for the body and wings.

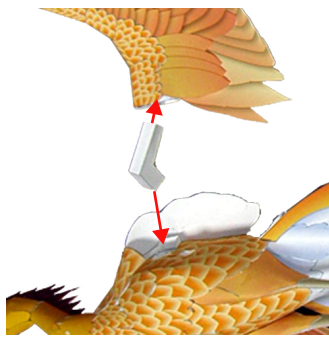
88 × 2



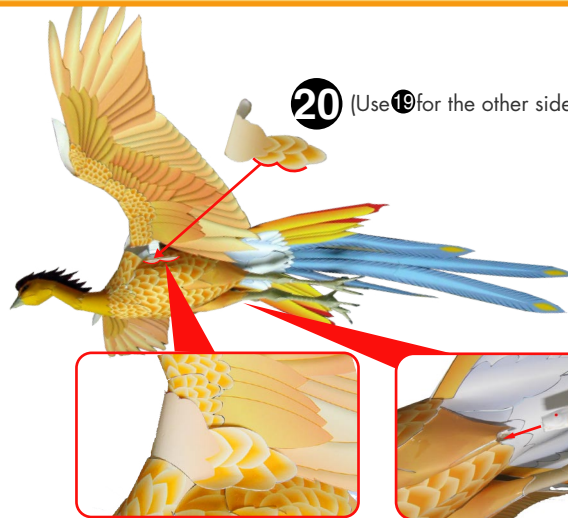
89



Attach the wings and legs to the body.



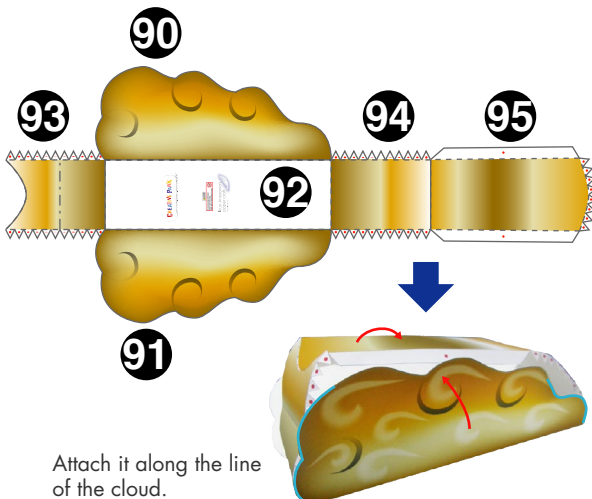
Insert the other side in the same way.



20

(Use 19 for the other side)

Make the stand and place the Fenghuang on it, and you're done!



Attach it along the line of the cloud.



It will balance if you place it so its chest is here.

Complete!