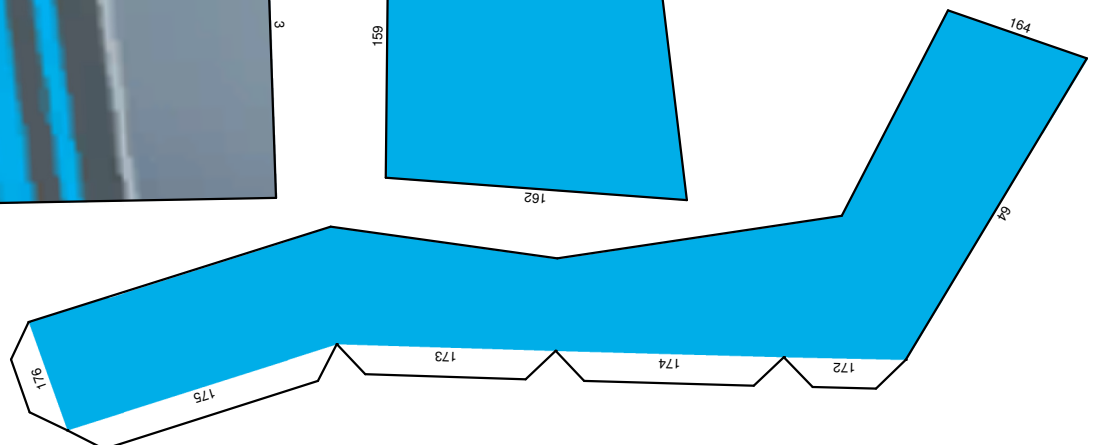
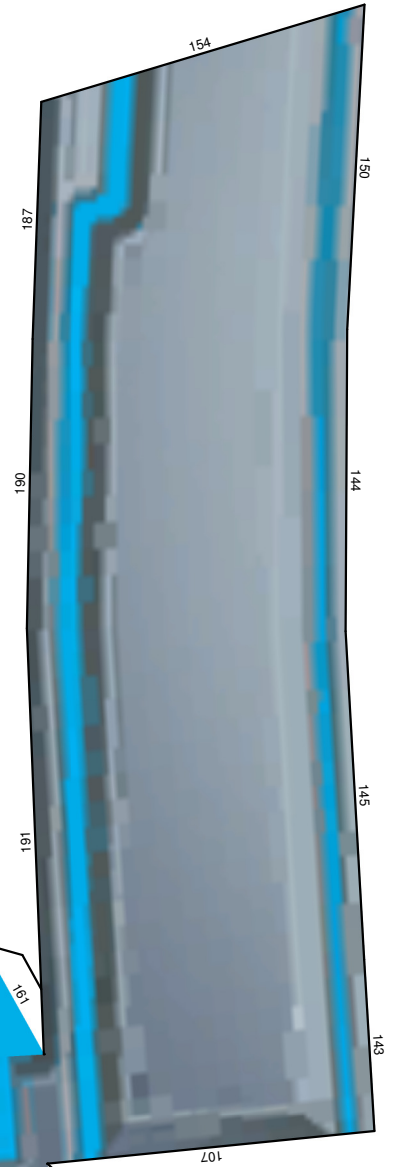
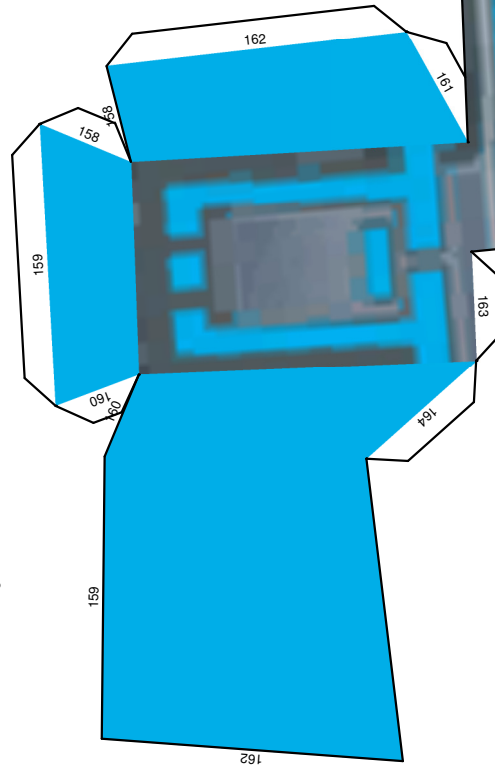


TRON 2.0

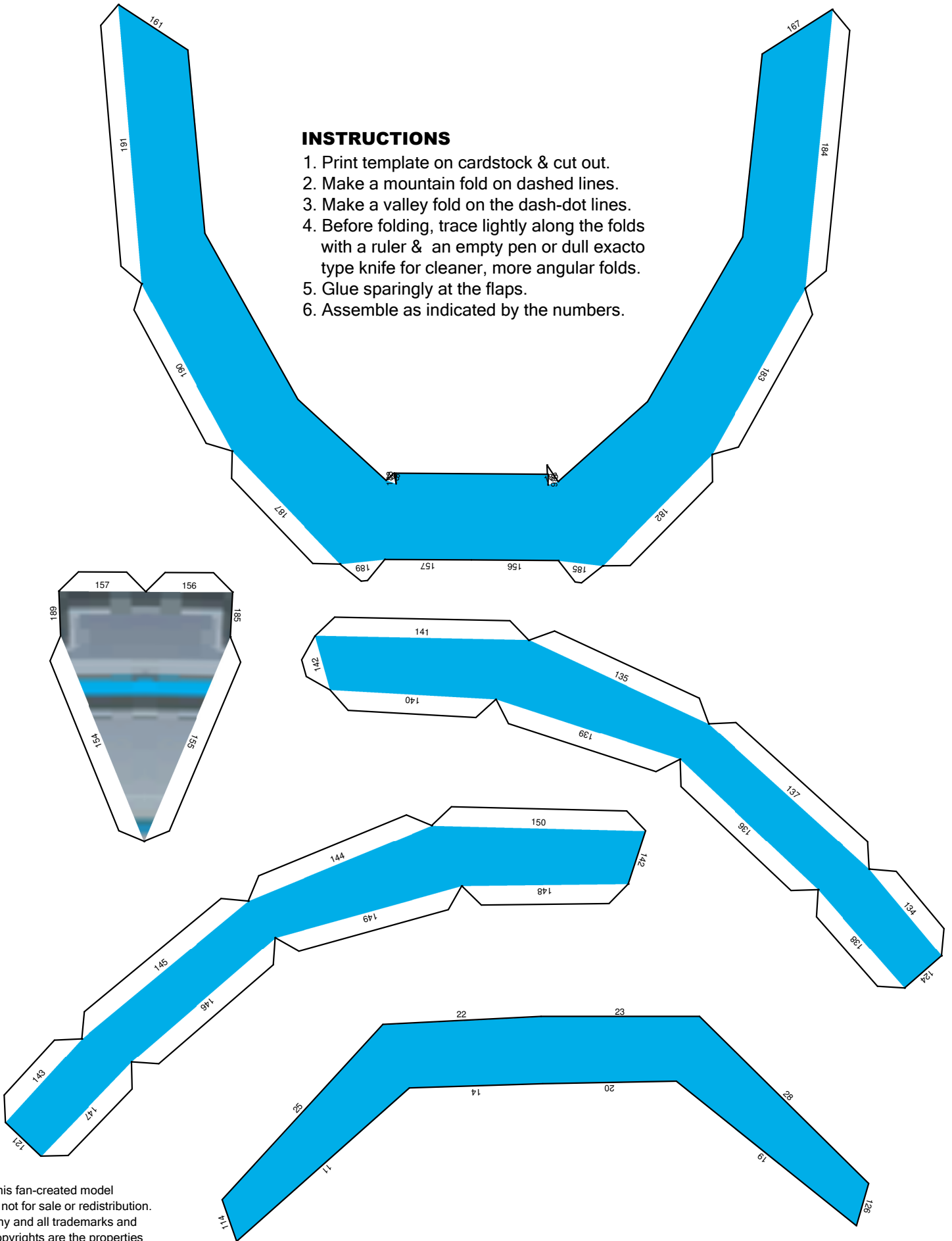
ALAN BRADLEY'S HELMET 1:1 SCALE

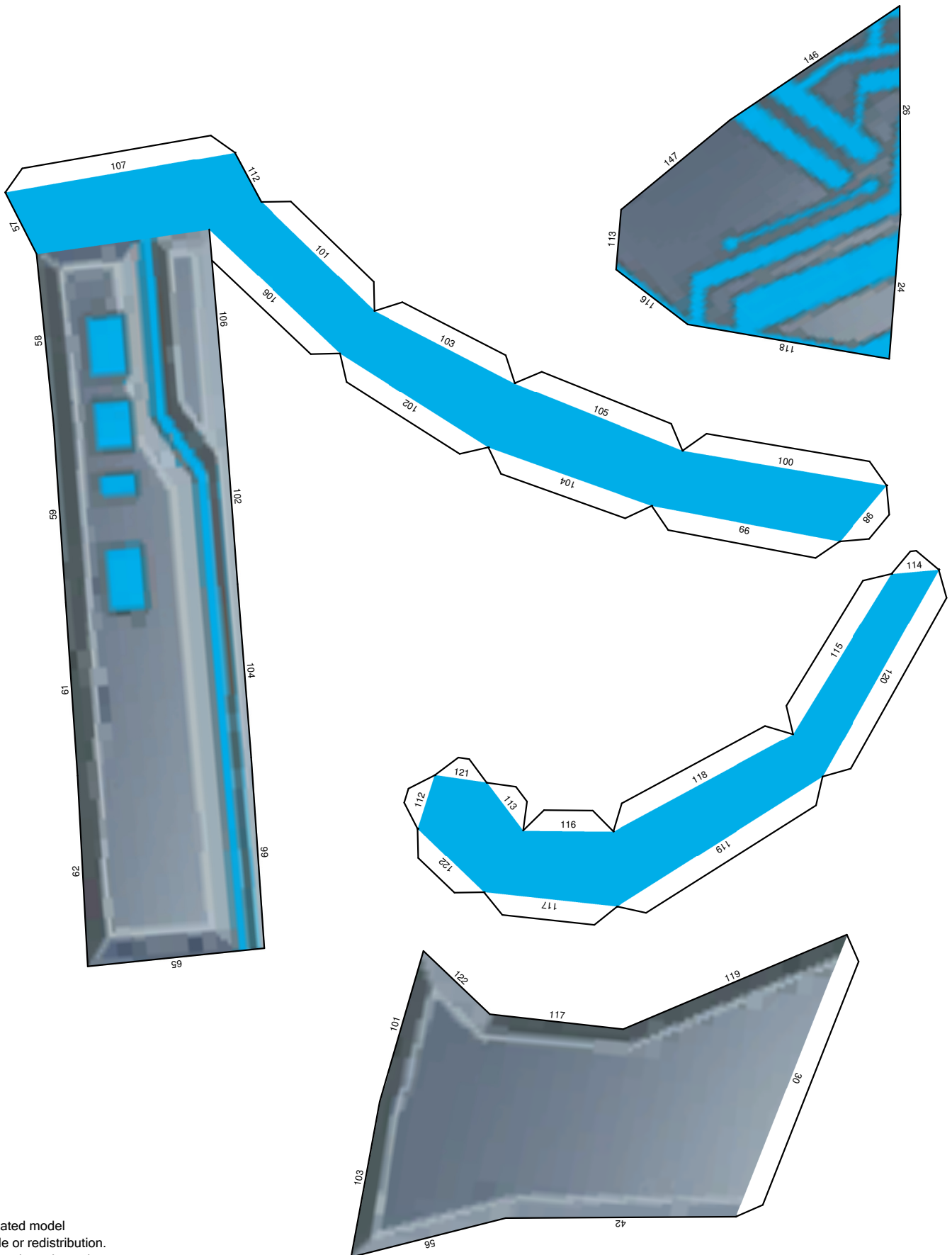


This fan-created model
is not for sale or redistribution.
Any and all trademarks and
copyrights are the properties
of their respective owners.
© 2009 C. Jefferson OConnor,
www.tektonten.blogspot.com

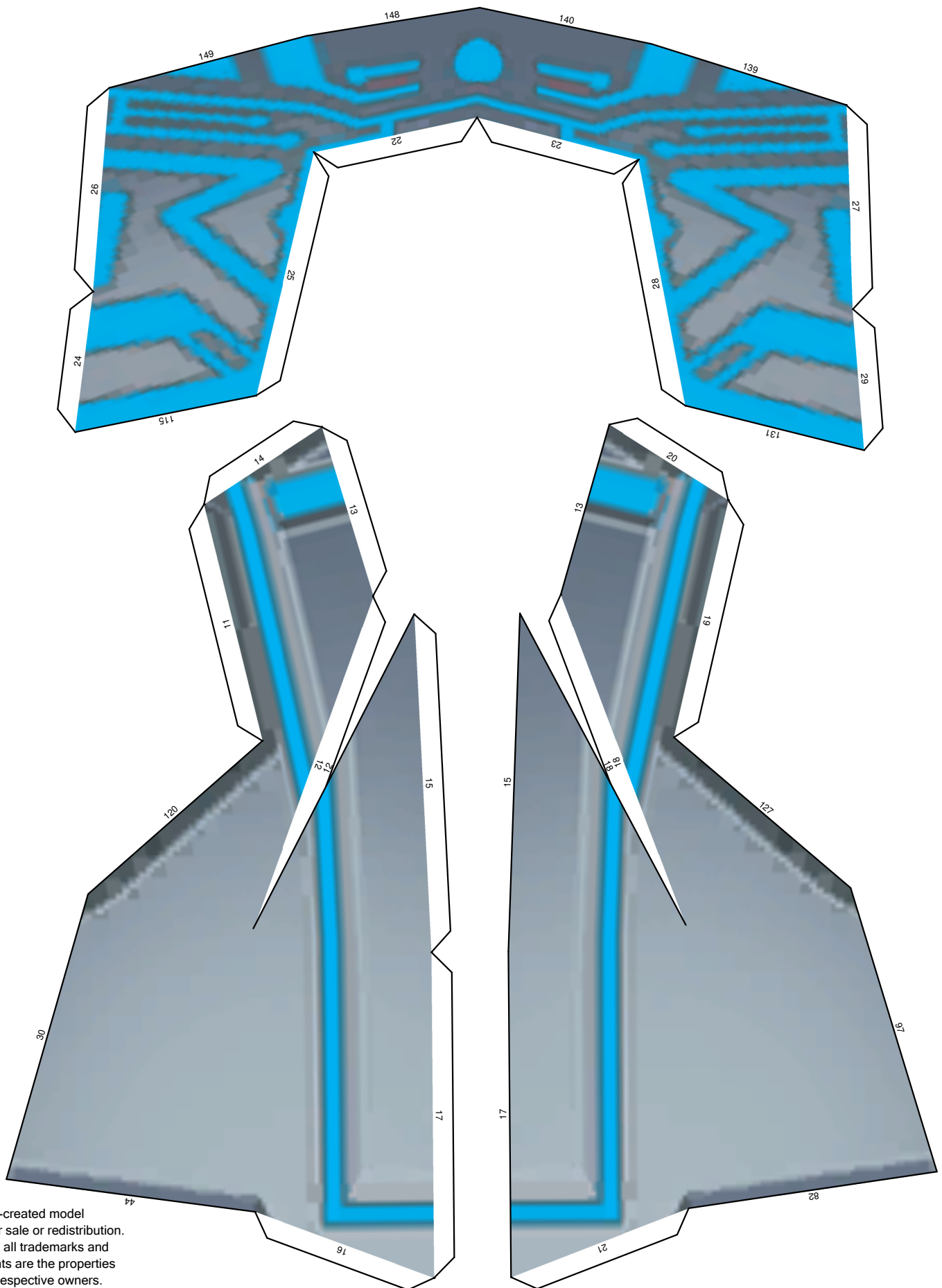
INSTRUCTIONS

1. Print template on cardstock & cut out.
2. Make a mountain fold on dashed lines.
3. Make a valley fold on the dash-dot lines.
4. Before folding, trace lightly along the folds with a ruler & an empty pen or dull exacto type knife for cleaner, more angular folds.
5. Glue sparingly at the flaps.
6. Assemble as indicated by the numbers.

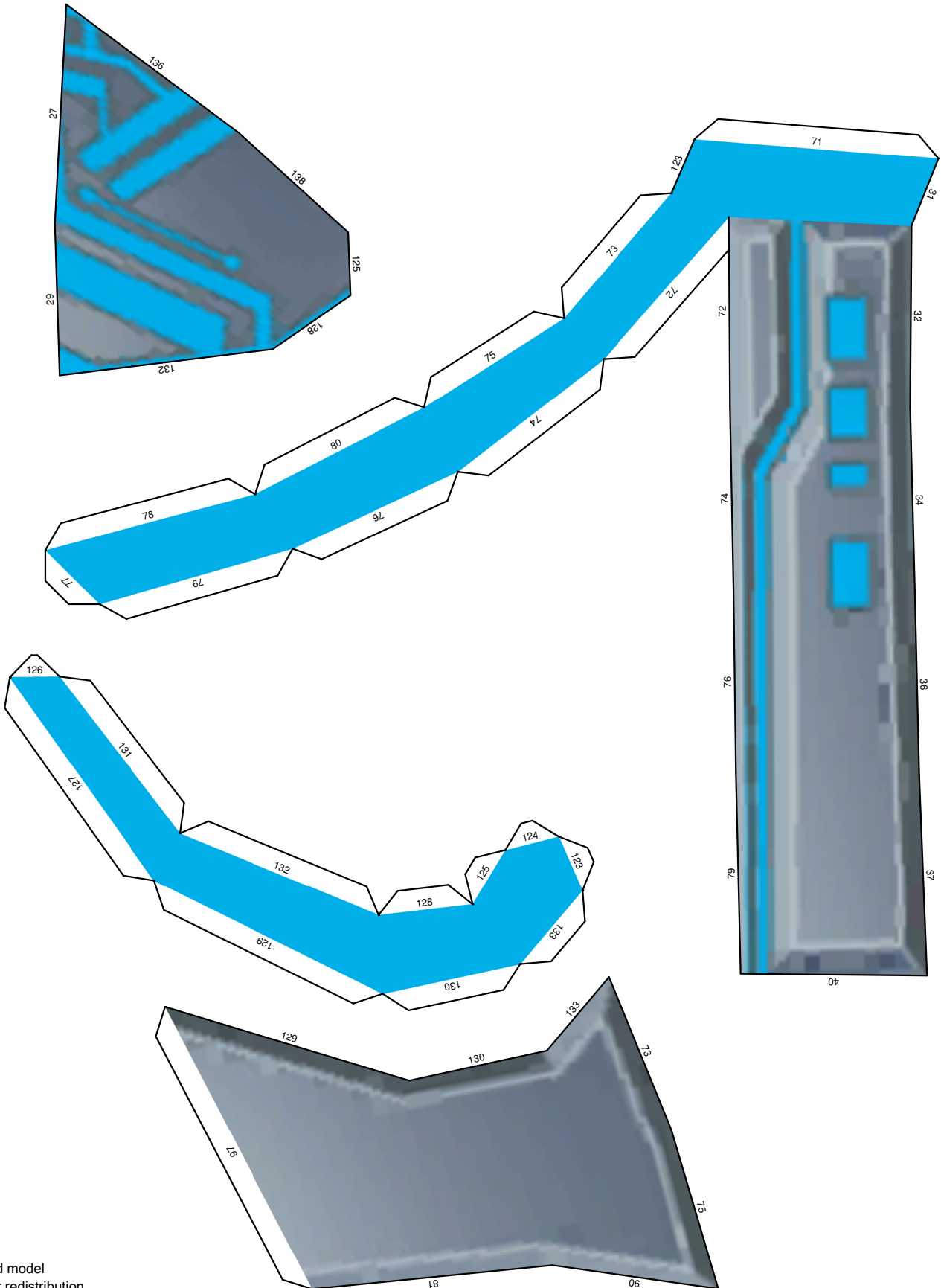




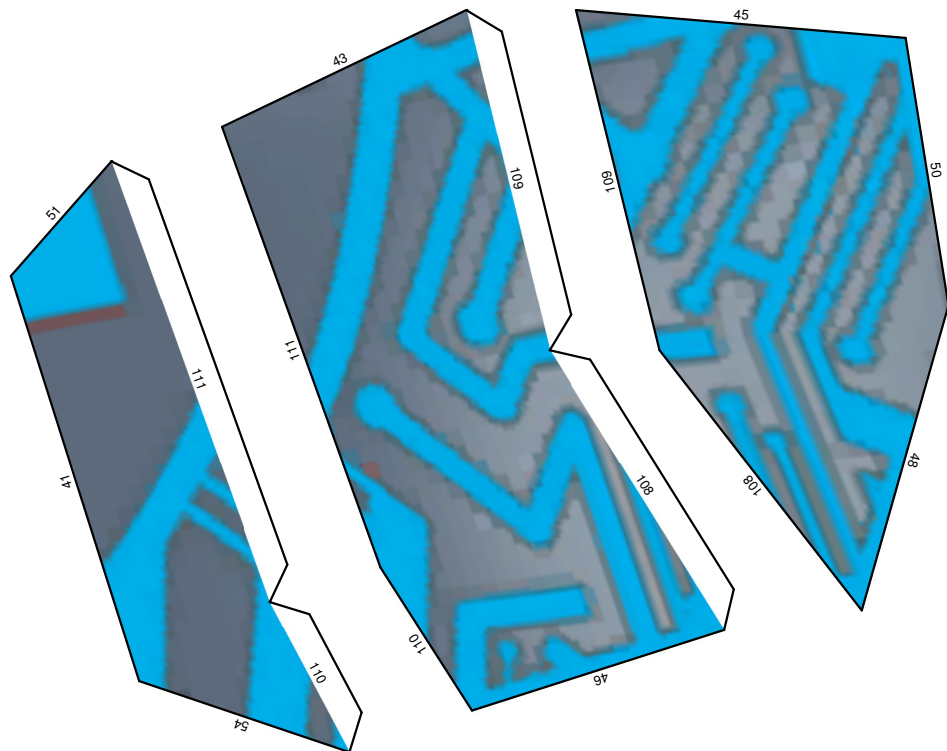
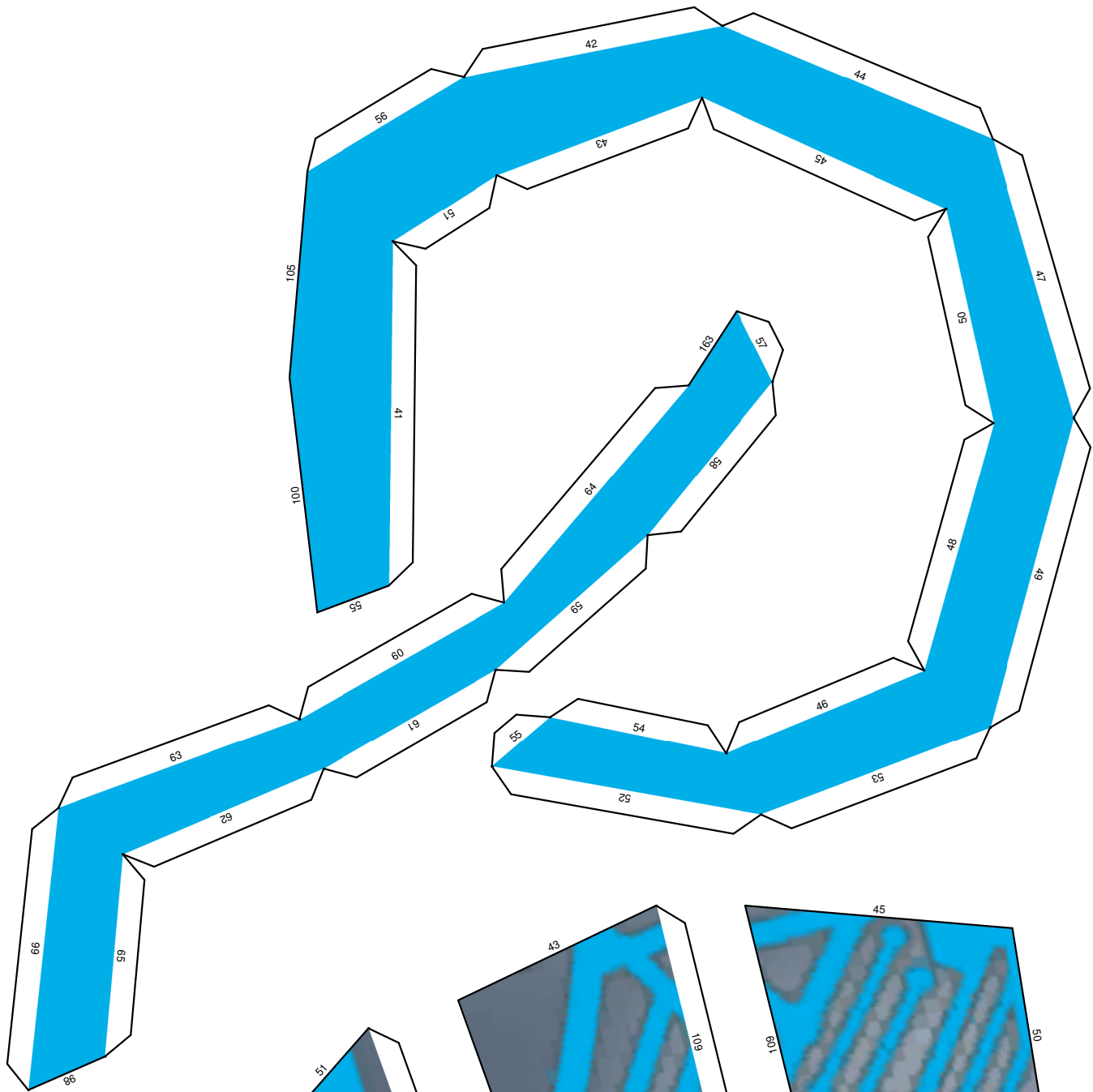
This fan-created model
is not for sale or redistribution.
Any and all trademarks and
copyrights are the properties
of their respective owners.
© 2009 C. Jefferson OConnor,
www.tektonten.blogspot.com



This fan-created model
 is not for sale or redistribution.
 Any and all trademarks and
 copyrights are the properties
 of their respective owners.
 © 2009 C. Jefferson OConnor,
www.tektonten.blogspot.com



This fan-created model is not for sale or redistribution. Any and all trademarks and copyrights are the properties of their respective owners. © 2009 C. Jefferson OConnor, www.tektonten.blogspot.com



This fan-created model
is not for sale or redistribution.
Any and all trademarks and
copyrights are the properties
of their respective owners.
© 2009 C. Jefferson OConnor,
www.tektonten.blogspot.com

