

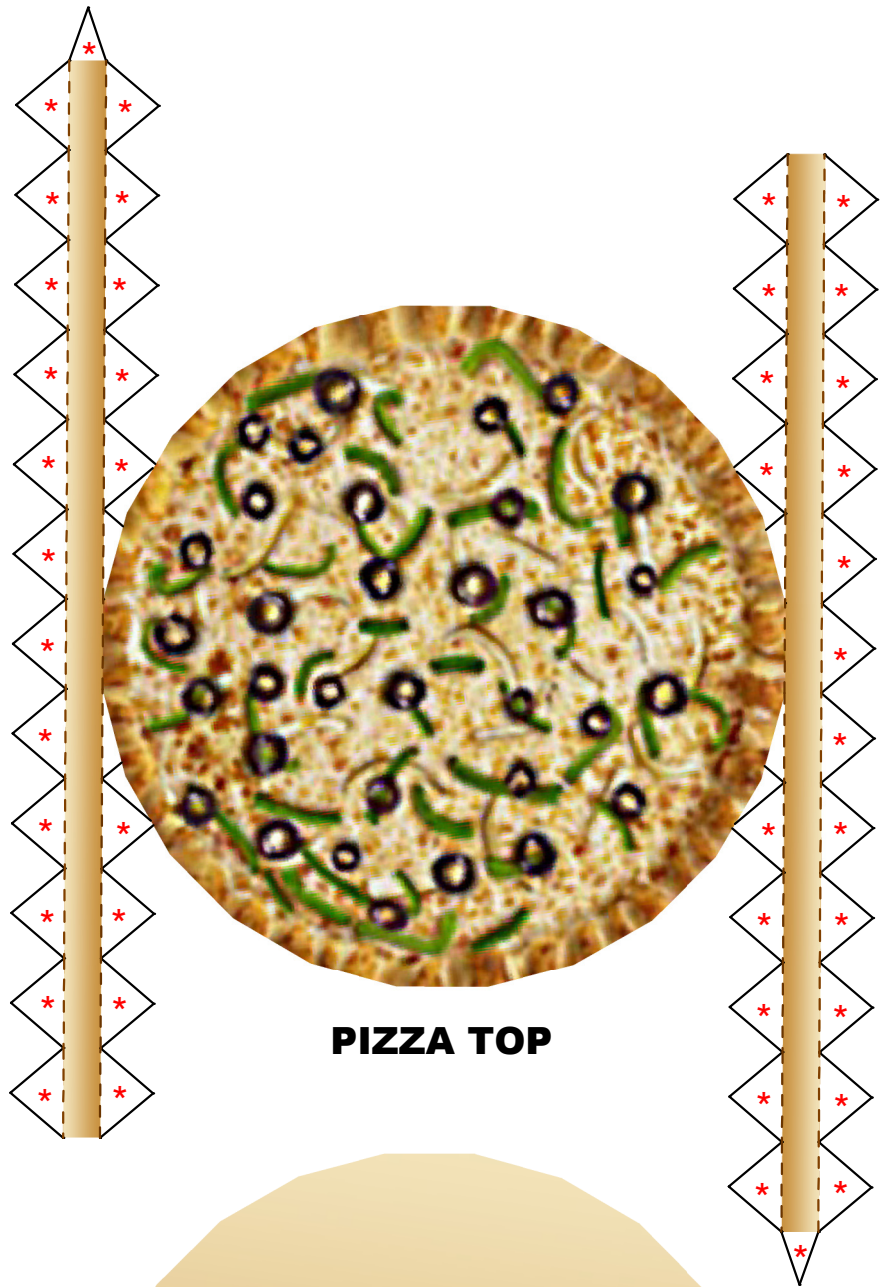
Domino's Pizza

Paper Toy - 1:4 Scale

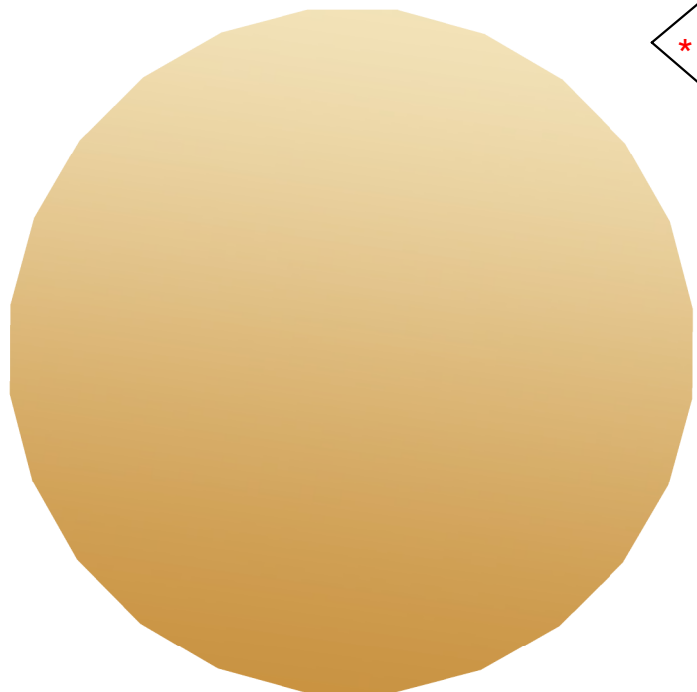


INSTRUCTIONS:

1. Print the template on cardstock.
2. Cut out the pieces.
3. Make a mountain fold on the dashed lines. Before folding, trace lightly along the folds with a ruler and an empty pen or dull exacto type knife for cleaner, more angular folds.
4. Glue sparingly where indicated by the red stars. Do not glue the three flaps on the pizza box lid.
5. Cut at the half circle on the pizza box lid to create a finger hole for opening the lid.



PIZZA TOP

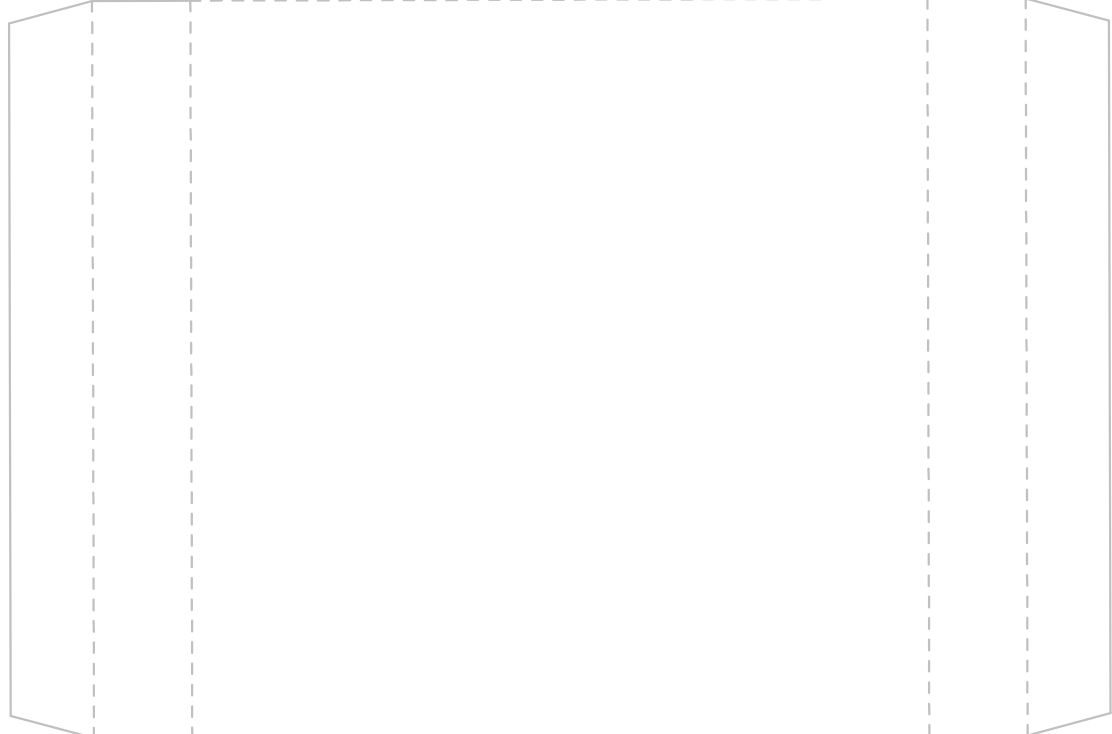


PIZZA BOTTOM



Glue the
back of
this flap

Glue the
back of
this flap



Glue the
back of
this flap

PIZZA BOX