



# Tomb Raider 3

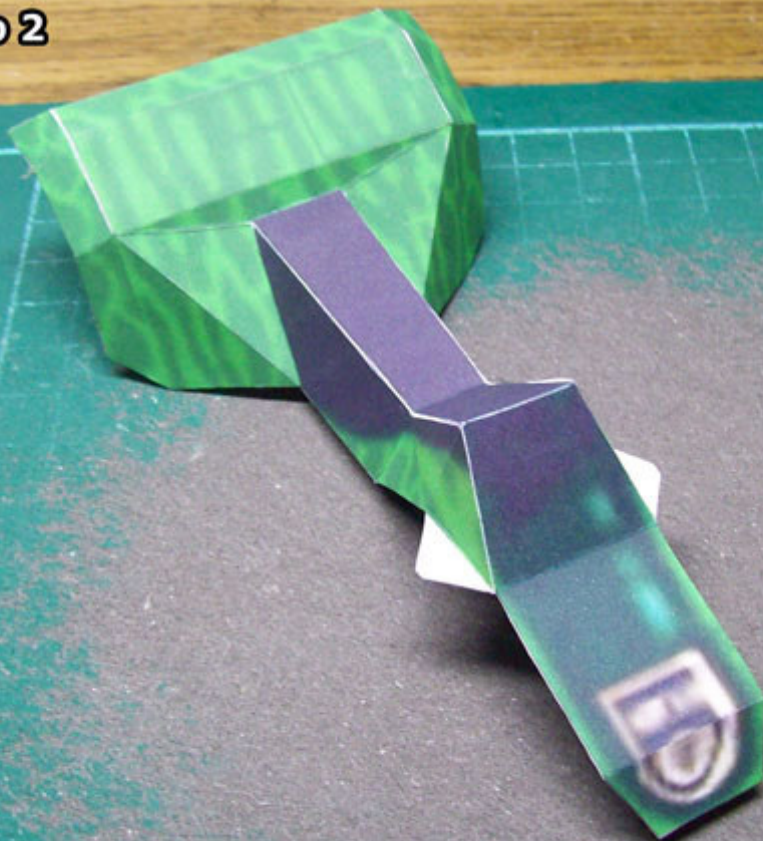
## quad bike instructions

**step 1**



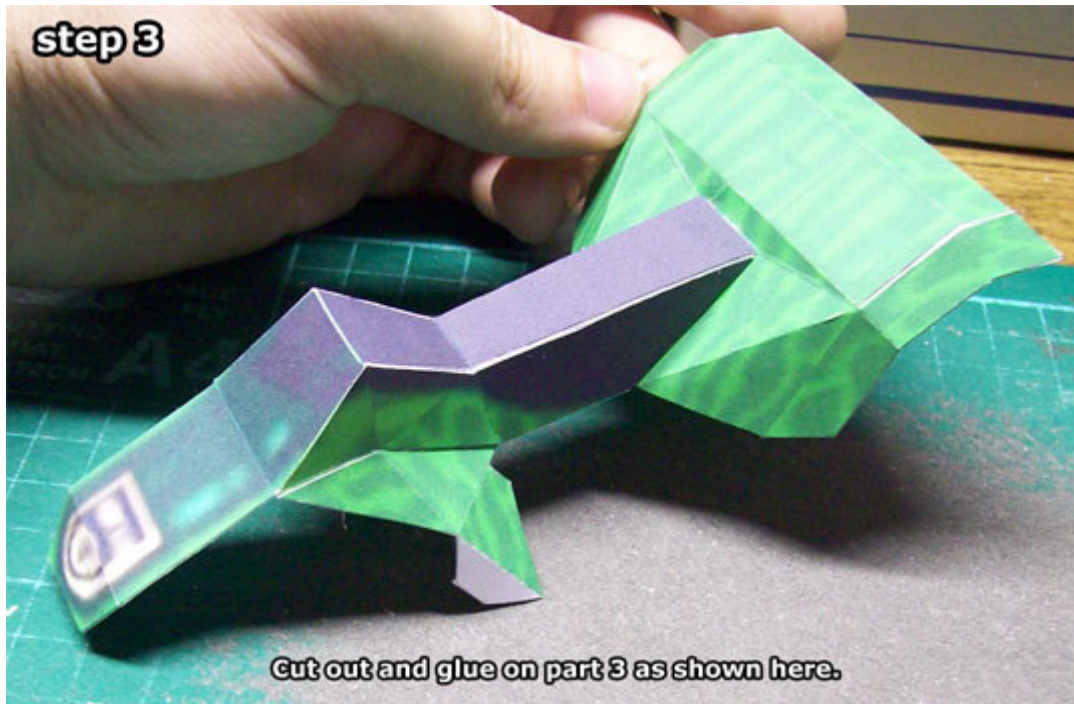
Cut out part 1 (from any of the body kits you have chosen) and glue it together as shown here.

**step 2**



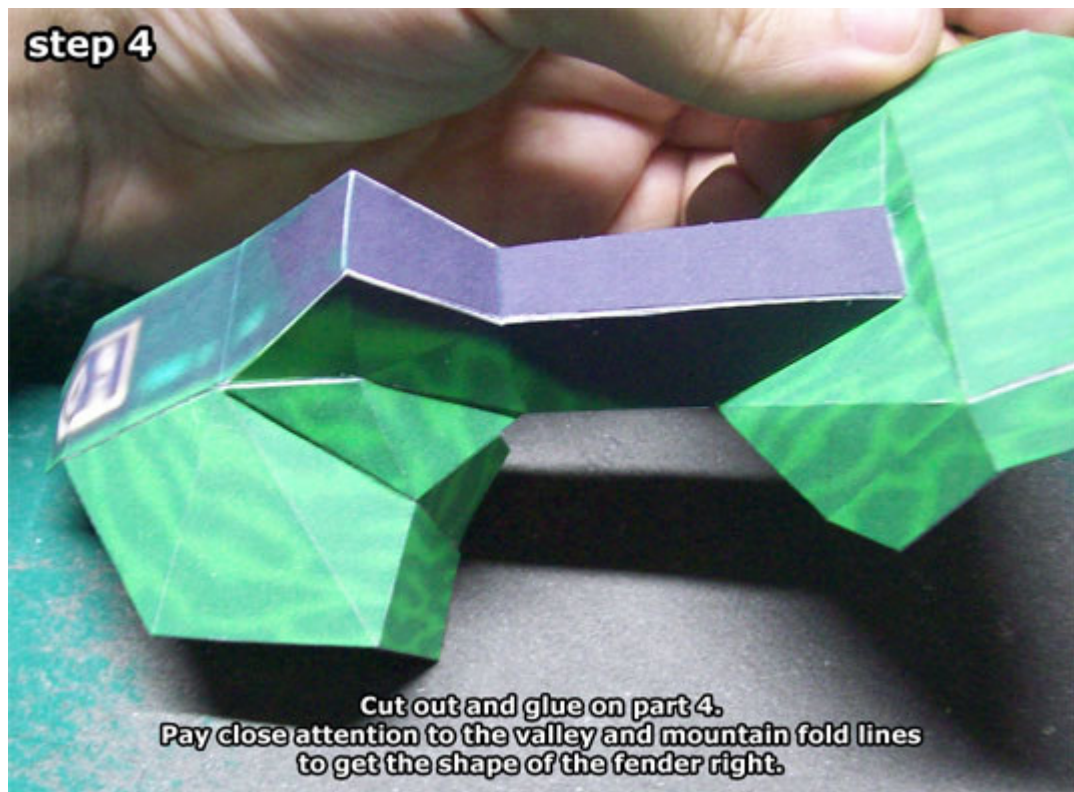
Cut out and assemble part 2, and glue it to part 1 as shown here.

**step 3**

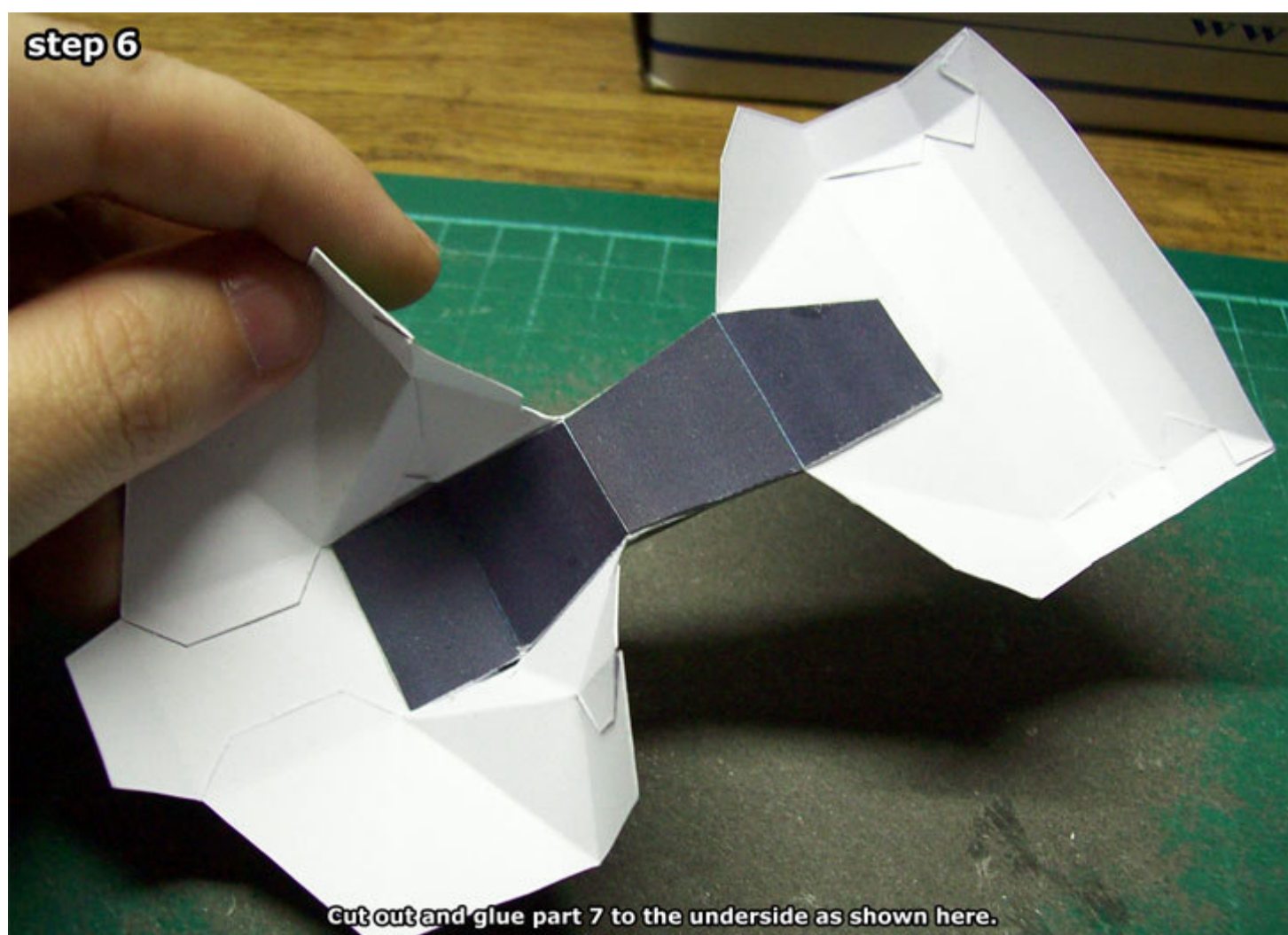
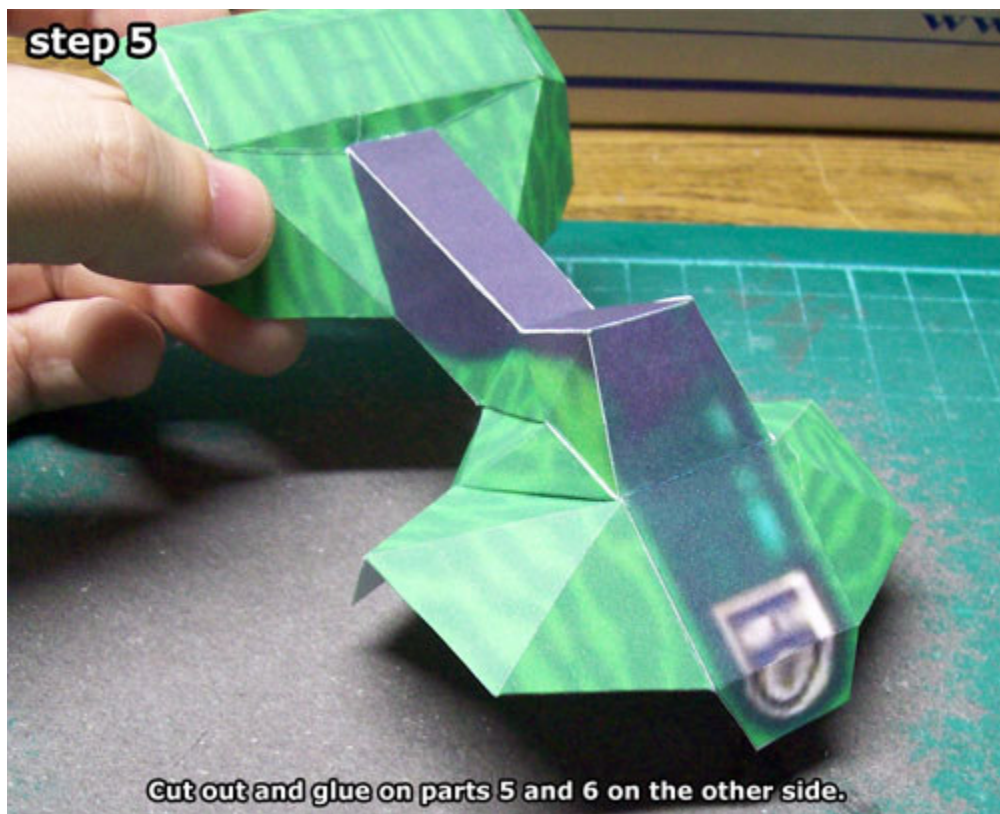


Cut out and glue on part 3 as shown here.

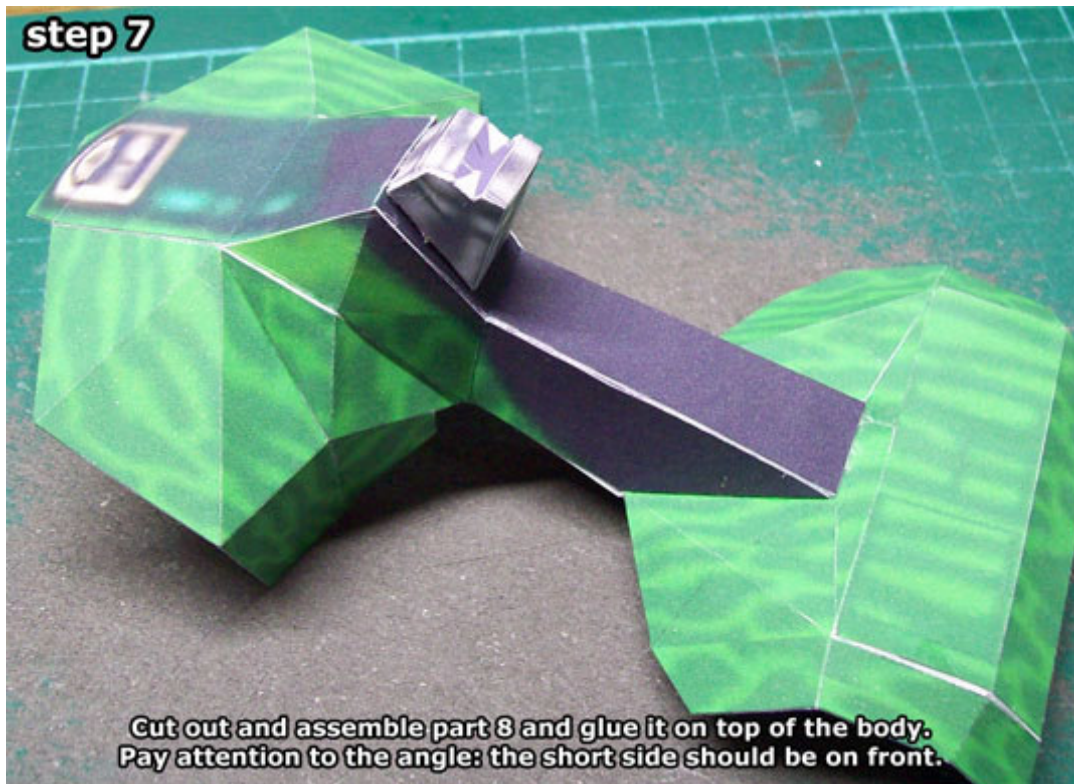
**step 4**



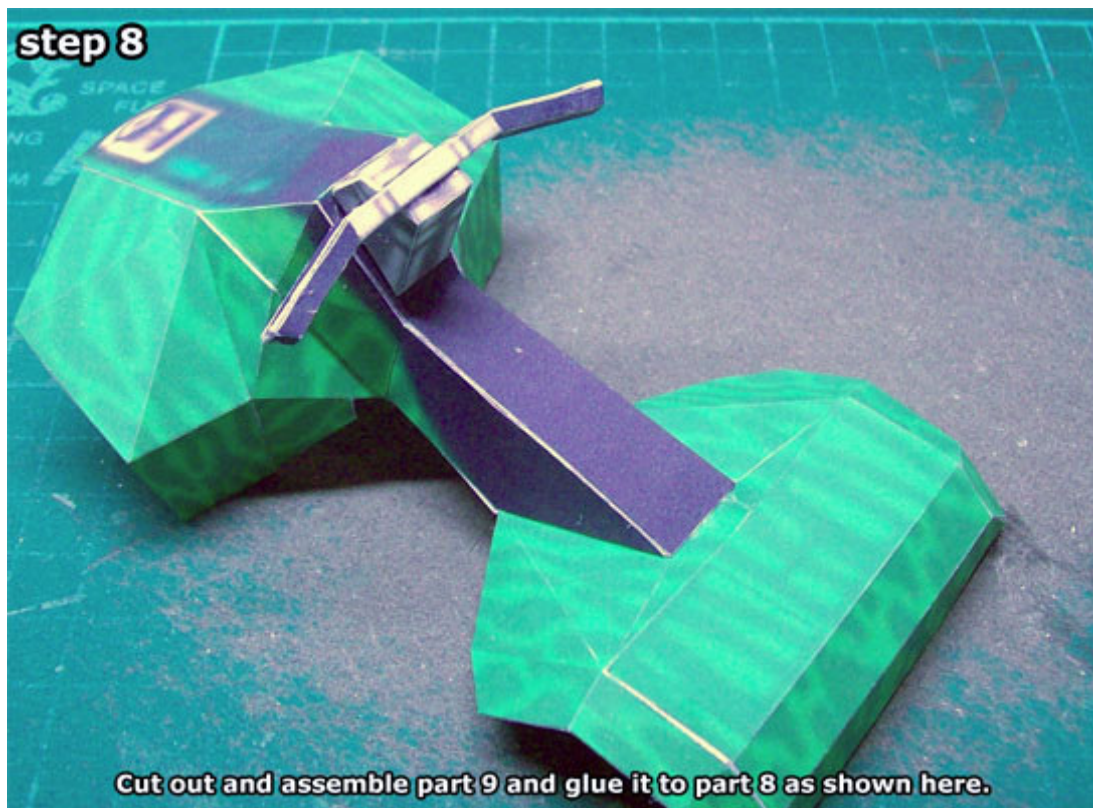
Cut out and glue on part 4.  
Pay close attention to the valley and mountain fold lines  
to get the shape of the fender right.



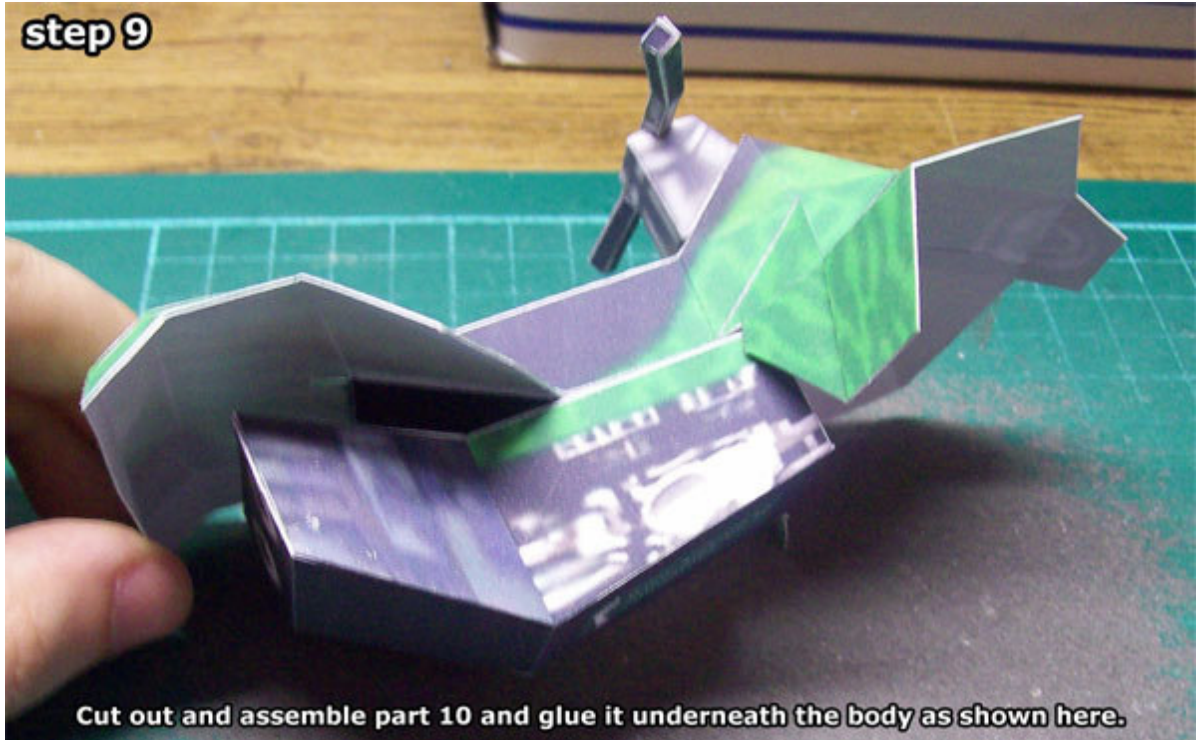
### step 7



### step 8

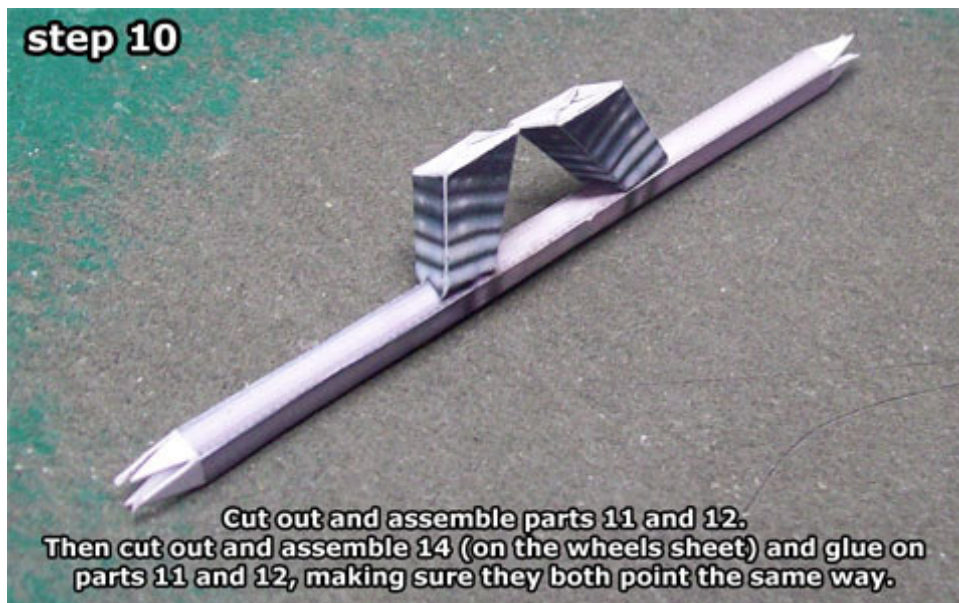


**step 9**



Cut out and assemble part 10 and glue it underneath the body as shown here.

**step 10**



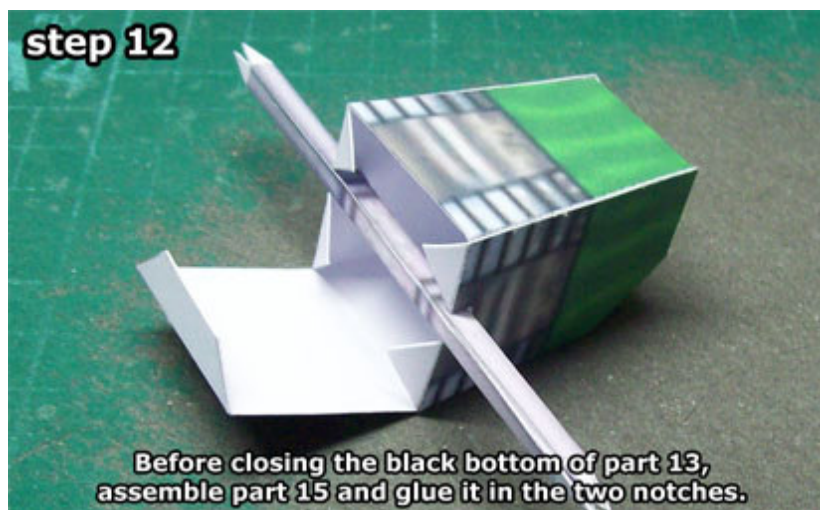
Cut out and assemble parts 11 and 12.  
Then cut out and assemble 14 (on the wheels sheet) and glue on  
parts 11 and 12, making sure they both point the same way.

**step 11**



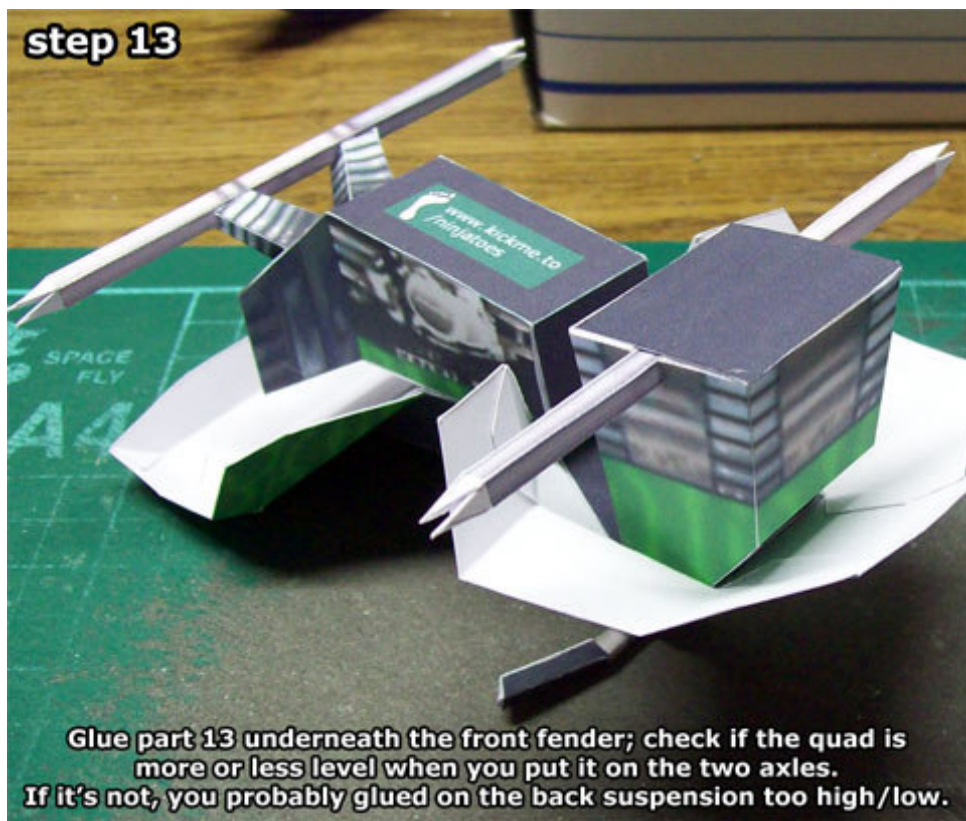
Glue the rear axle and suspension to the rear.  
(dûh...)

**step 12**



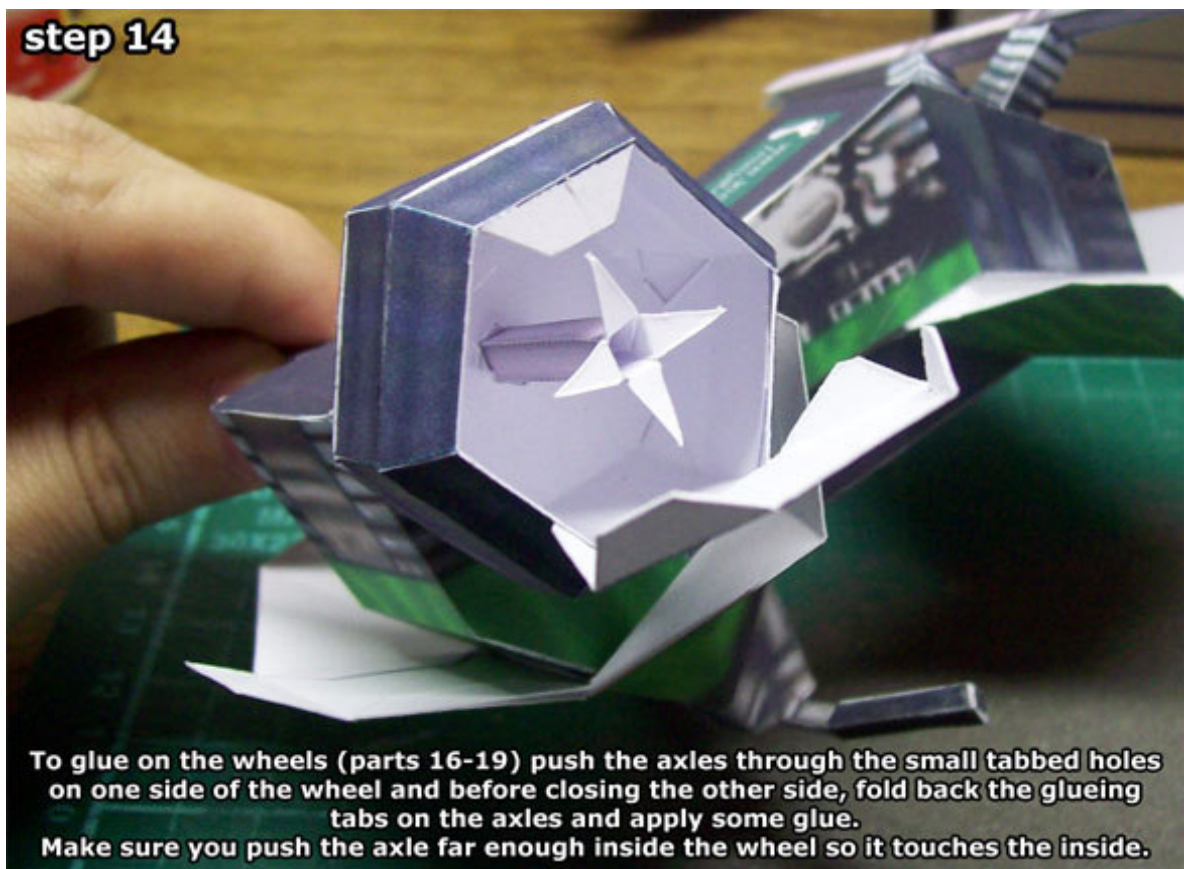
Before closing the black bottom of part 13,  
assemble part 15 and glue it in the two notches.

### step 13



Glue part 13 underneath the front fender; check if the quad is more or less level when you put it on the two axes. If it's not, you probably glued on the back suspension too high/low.

### step 14



To glue on the wheels (parts 16-19) push the axles through the small tabbed holes on one side of the wheel and before closing the other side, fold back the glueing tabs on the axles and apply some glue. Make sure you push the axle far enough inside the wheel so it touches the inside.

**step 15**



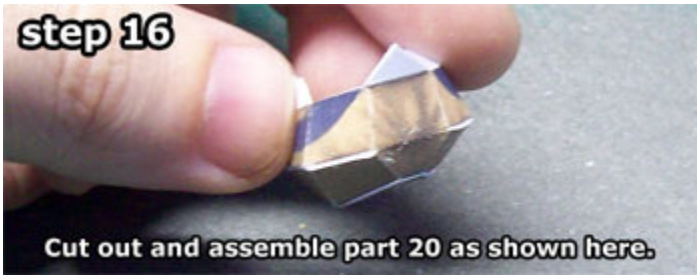
**It's called a quad bike for a reason,  
so you need to make three more wheels.**



# Tomb Raider 3

## Lara Croft figure instructions

**step 16**



Cut out and assemble part 20 as shown here.

**step 17**



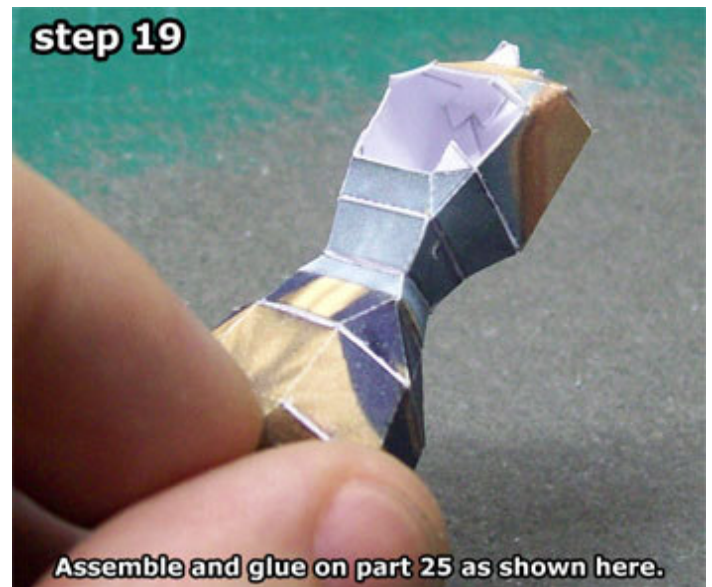
Assemble and glue on part 21 as shown here.

**step 18**



Assemble and glue on parts 22-24 as shown here.

**step 19**



Assemble and glue on part 25 as shown here.

**step 20**



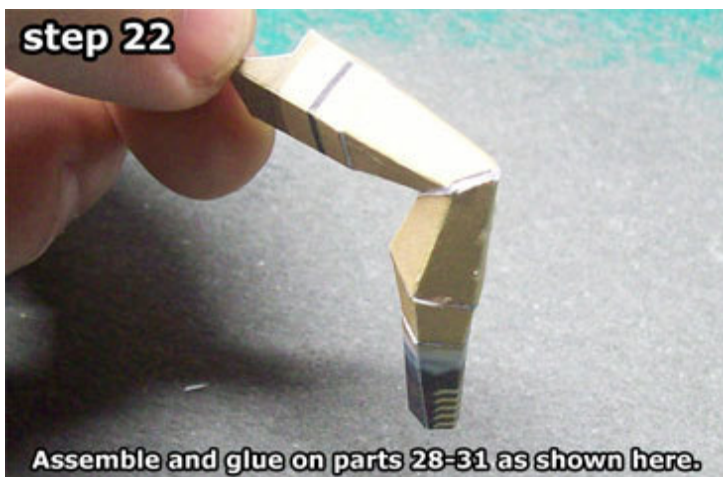
Assemble and glue on part 26 as shown here.

**step 21**



Cut out and assemble part 27 as shown here.

**step 22**



Assemble and glue on parts 28-31 as shown here.

**step 23**



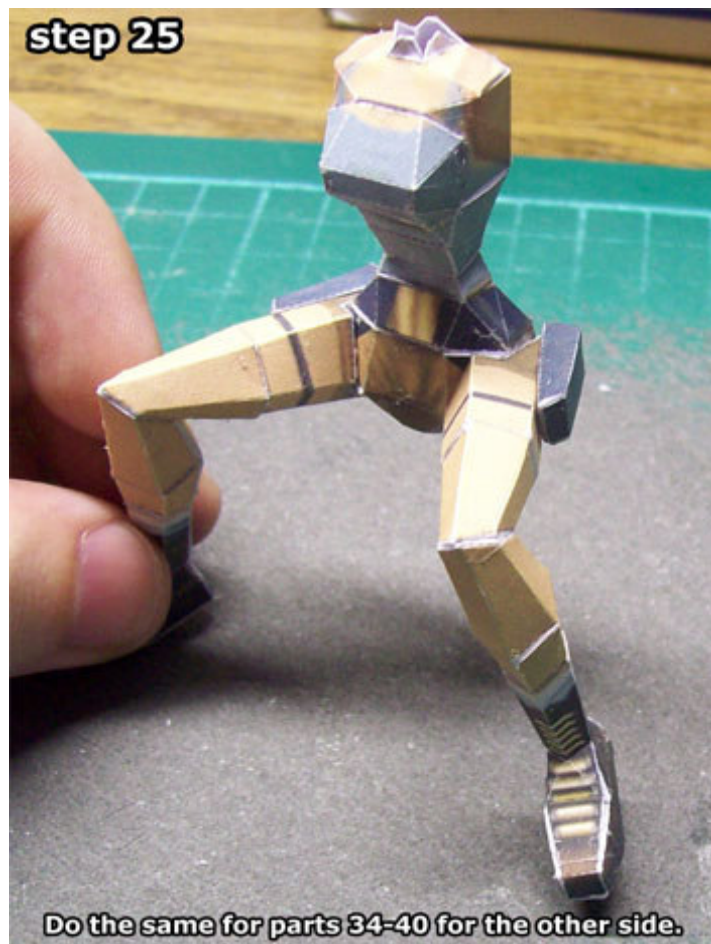
Cut out and assemble part 32 as shown here.

### step 24



Glue the assembled part 32 to the leg and then the leg to the shorts.  
Also assemble part 33 and glue it on as shown here.

### step 25



Do the same for parts 34-40 for the other side.

### step 26



Cut out and assemble part 41 as shown here.

### step 27



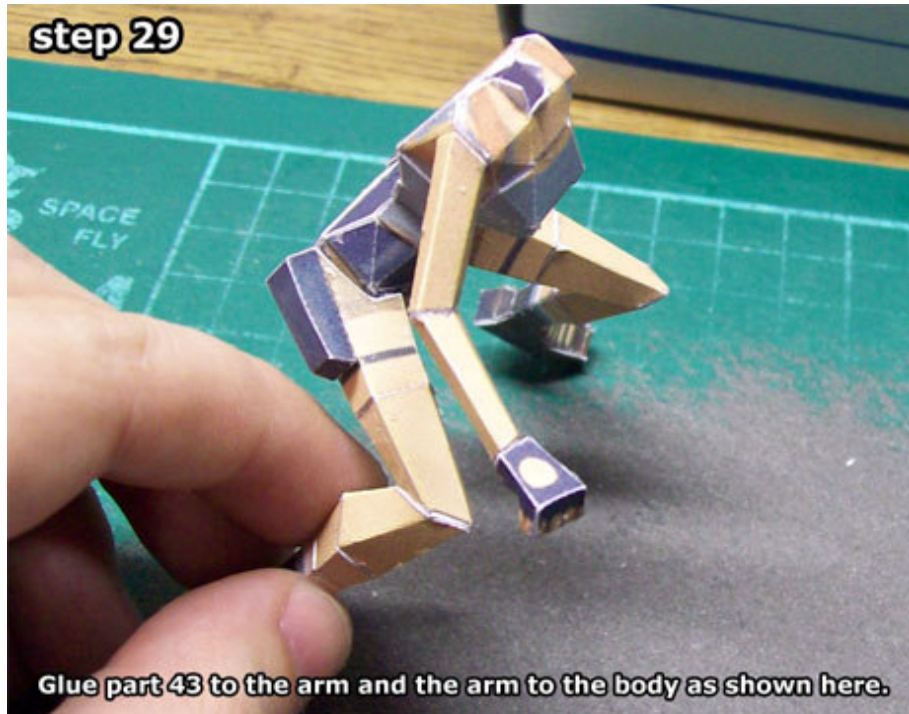
Assemble and glue on part 42 as shown here.

### step 28



Cut out and assemble part 43 as shown here.

### step 29



Glue part 43 to the arm and the arm to the body as shown here.

### step 30



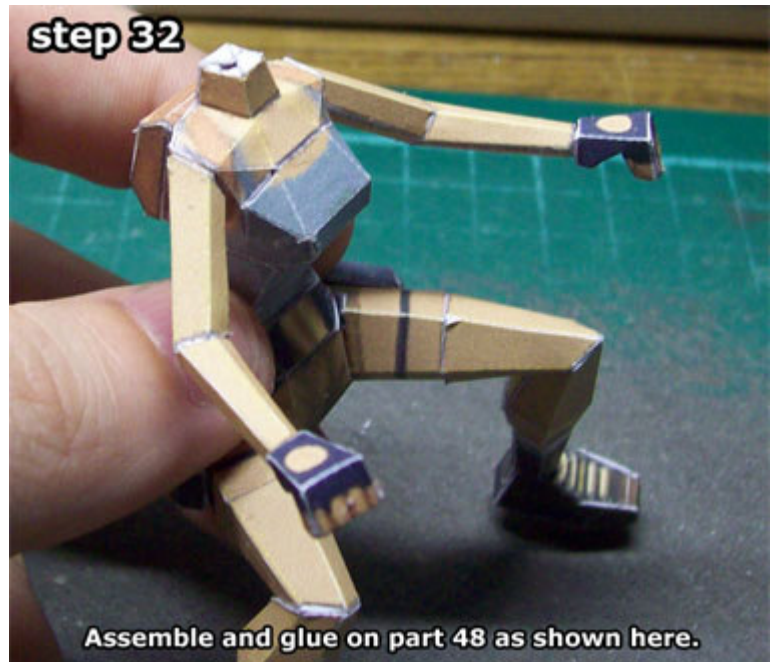
Do the same for parts 44-46 for the other side.  
Check to make sure the notches on the hands allow Lara to grab a hold of the steering wheel while sitting comfortable on the quad's seat.

**step 31**



Assemble and glue on part 47 as shown here.

**step 32**



Assemble and glue on part 48 as shown here.

**step 33**



Cut out and glue together parts 49-52 as shown here.

**step 34**



Cut out and glue on part 53 as shown here.

**step 35**



Cut out and assemble part 54 as shown here.

**step 36**



Assemble and glue on part 55 as shown here.

**step 37**



Glue the hair to Lara's head. Take your time to do this right.

**step 38**



Cut out and assemble part 56 and glue it to the back of the hair.

**step 39**



**Glue the head to the rest of the body.**  
**Thank you for downloading and building a Ninjatoes' paper model!!!**  
[www.kickme.to/ninjatoes](http://www.kickme.to/ninjatoes)