

Planet StarFreak Model No. 7

Andorian Battlecruiser (Kumari Class)

~1/1700



This is my paper model of the Andorian Battlecruiser from the TV series Star Trek: Enterprise. There are no exact measurements of the ship available, so I assumed the length to be 360m as stated on www.ex-astris-scientia.org. This should make a scale of 1/1700 for the Kumari.

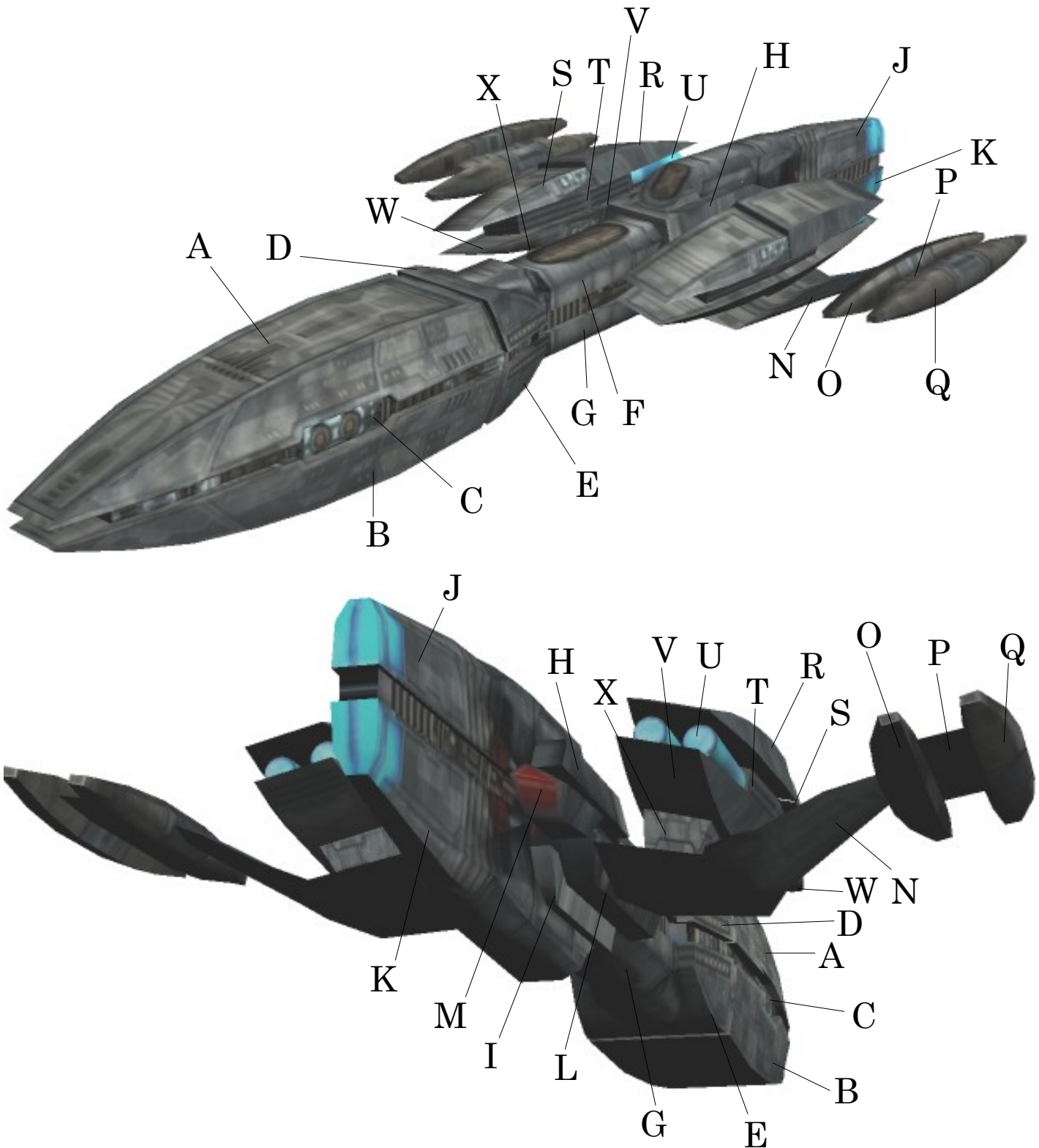
Most parts are constructed in what I call the box-and-cover-method, like all my models. This means you should be able to build them completely like a box, of course depending on their shape, leaving a cover that can be closed at the end. This enables you to support the part from the inside when glueing.

This paper model was downloaded from
www.PlanetStarFreak.de

PSF: Andorian Battlecruiser (Kumari Class)



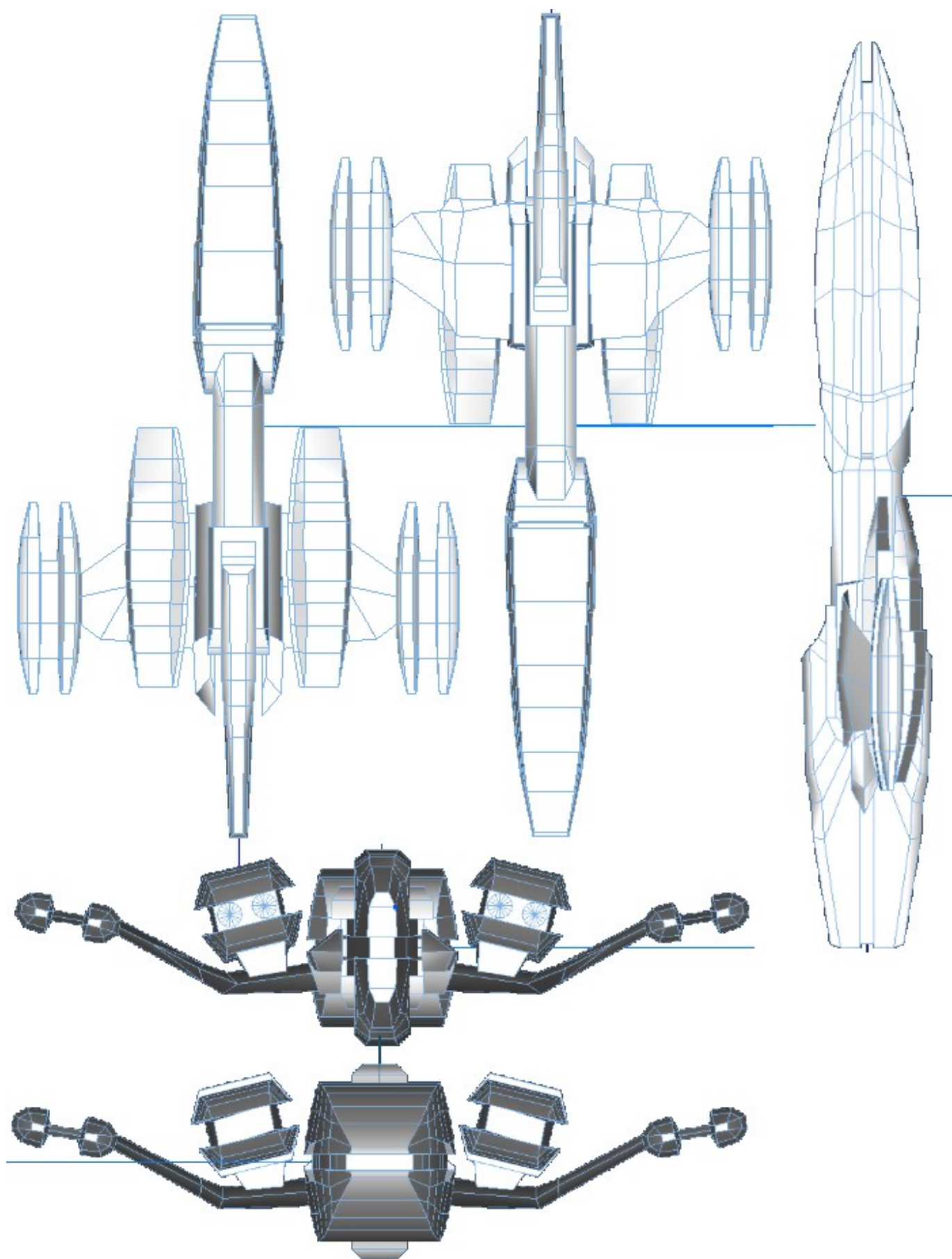
This overview shows where all the parts go. Most upper and lower or starboard and port parts are identical for building, but some are mirrored, so they should not be confused. The parts should be numbered in the same order you need them.

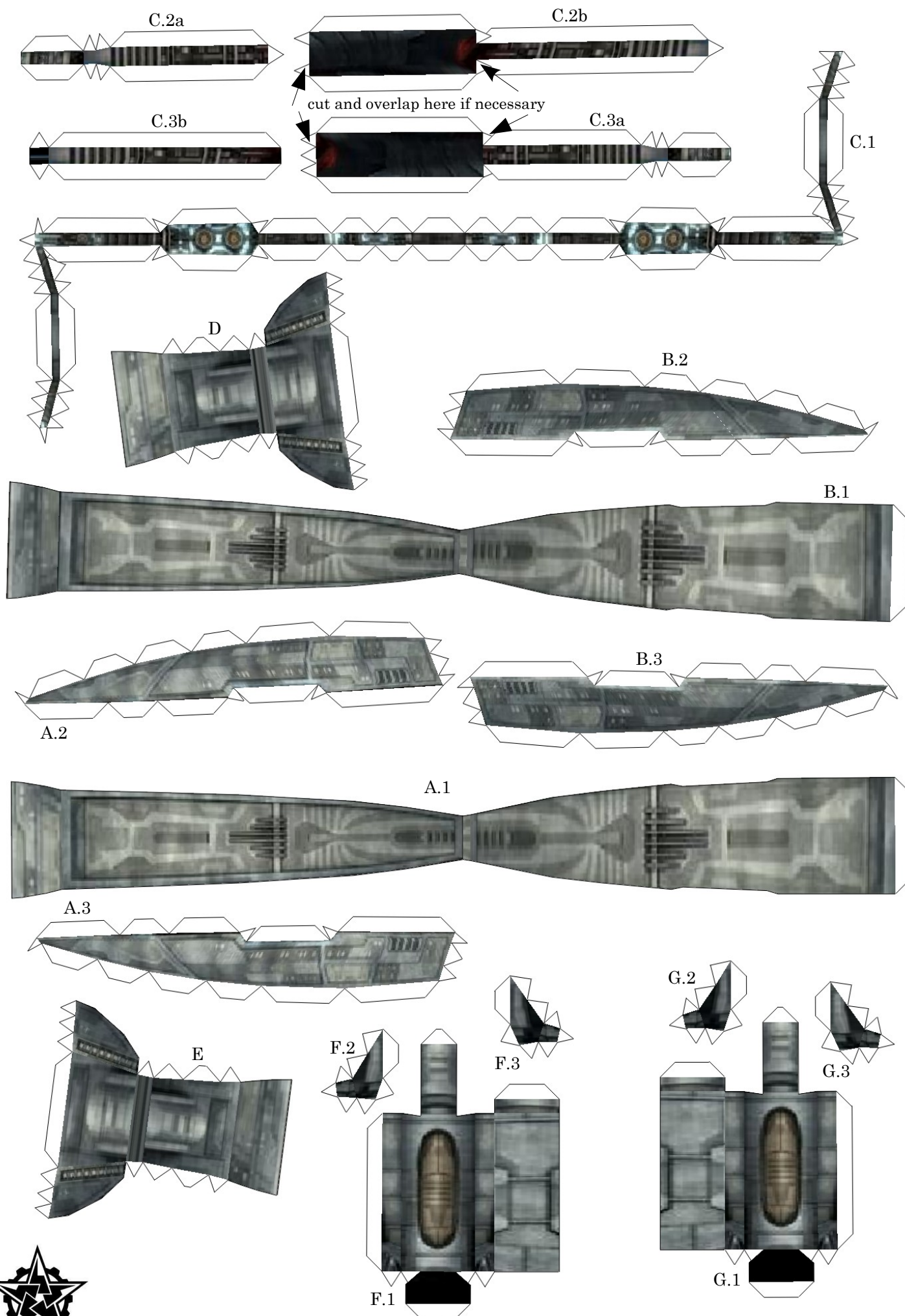


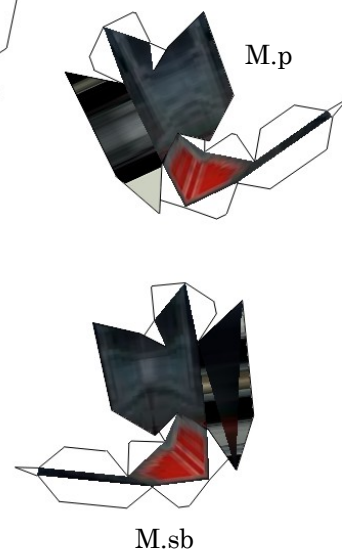
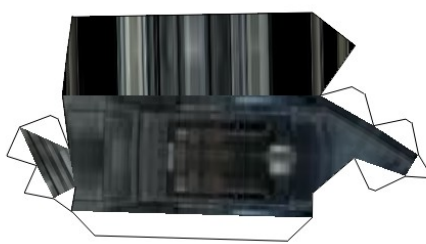
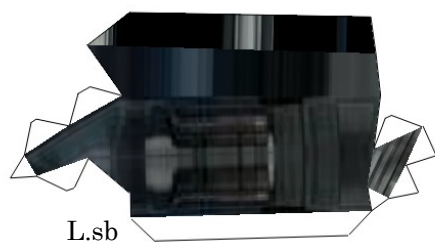
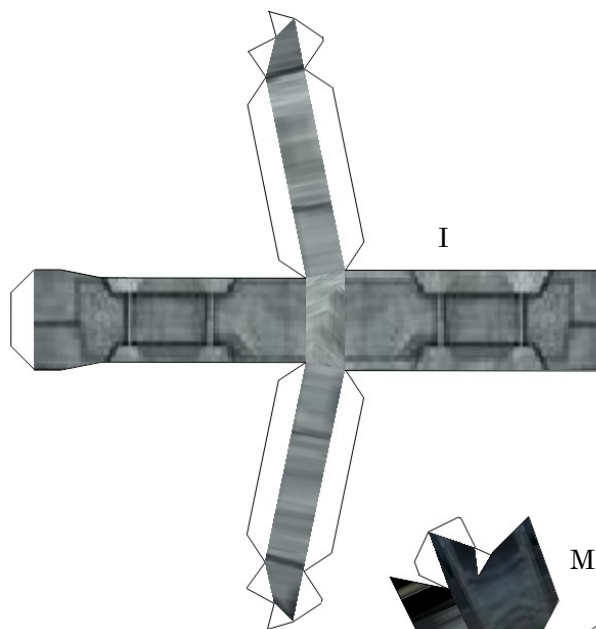
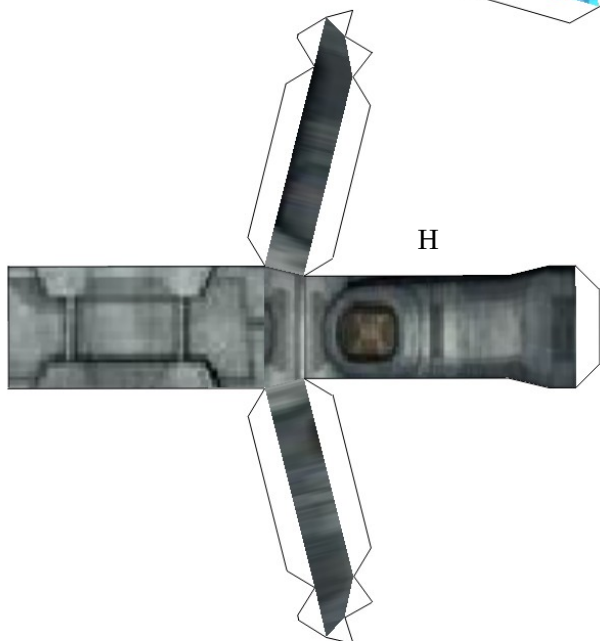
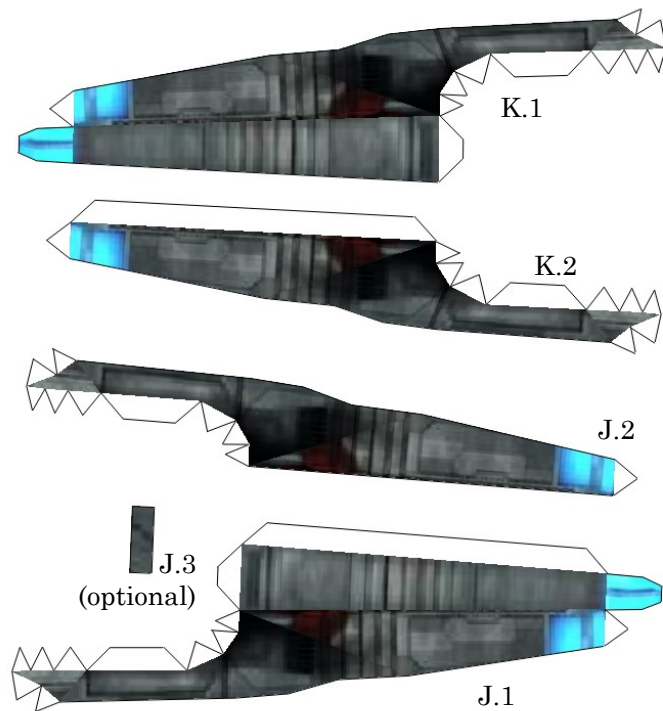
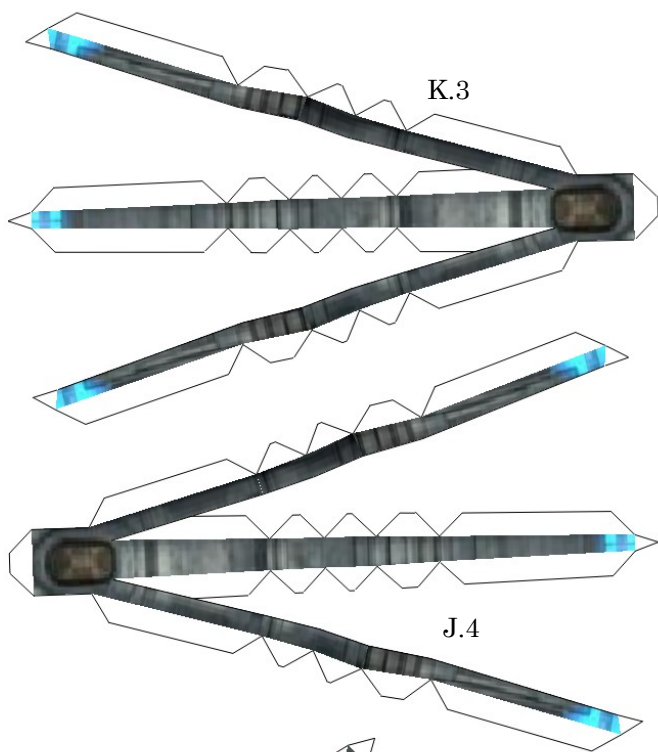
PSF: Andorian Battlecruiser (Kumari Class)



Orthographic Views









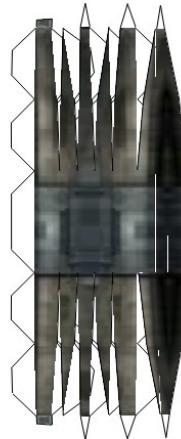
Q.p



P.p



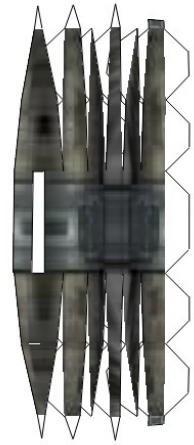
O.p



O.sb



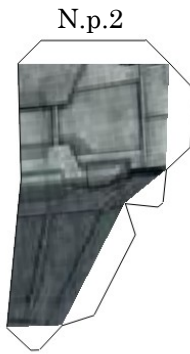
P.sb



Q.sb



N.p.1



N.p.2



N.p.3



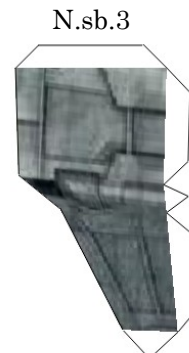
N.p.4



N.sb.1



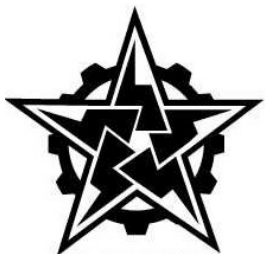
N.sb.2

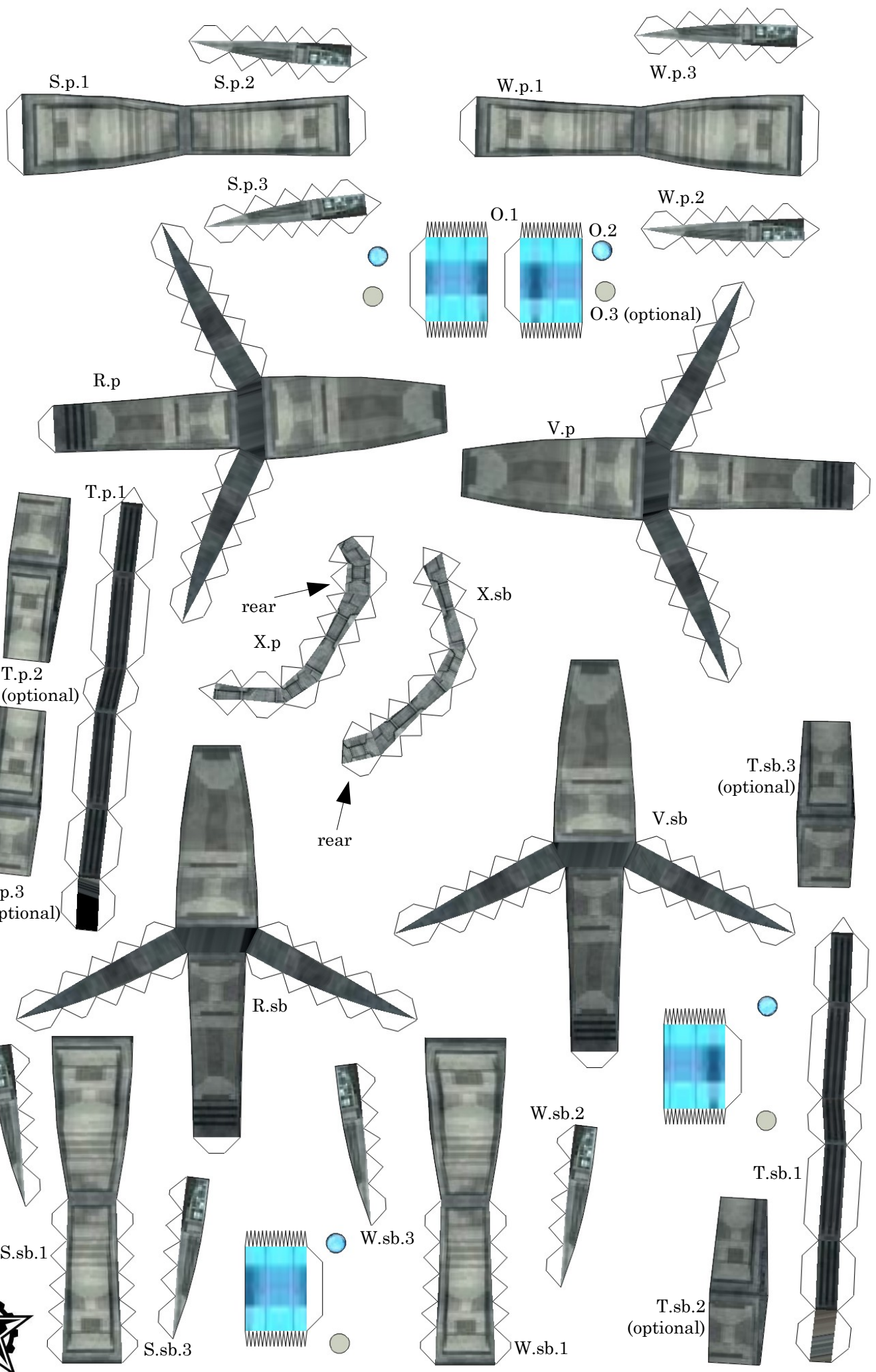


N.sb.3



N.sb.4



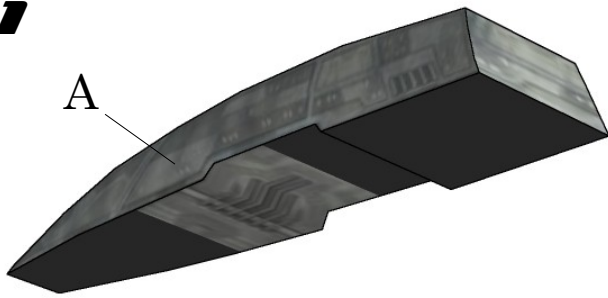


PSF: Andorian Battlecruiser (Kumari Class)



1

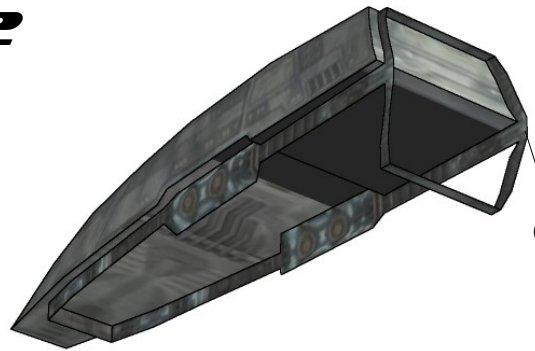
A



Assemble parts A and B. Up to step 10 all upper parts are identical in shape to their lower counterparts.

2

C.1

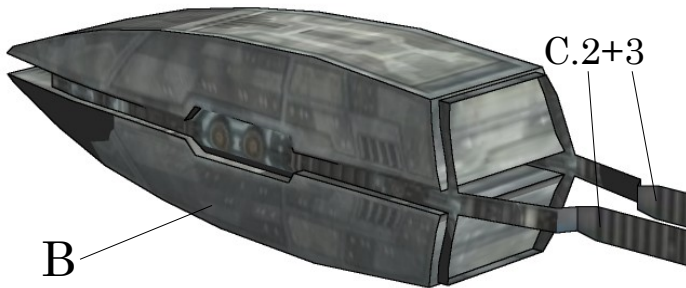


Assemble part C.1 and attach it to part A.

3

C.2+3

B

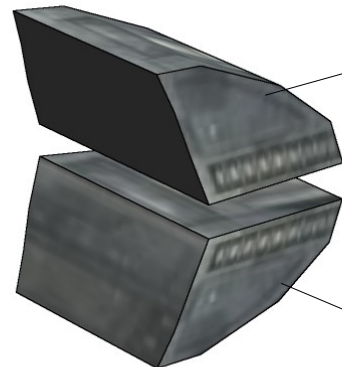


Attach part B and parts C.2 and 3 afterwards. Part B is slightly darker than part A, that way you can tell apart top and bottom.

4

D

E



Assemble parts D and E.

5

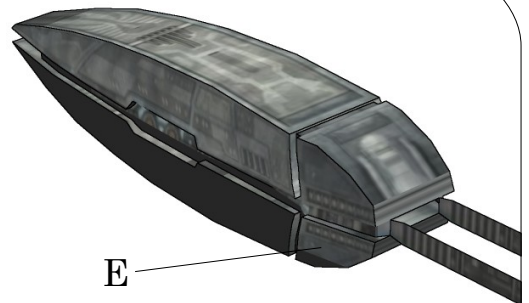
D



Attach part D.

6

E

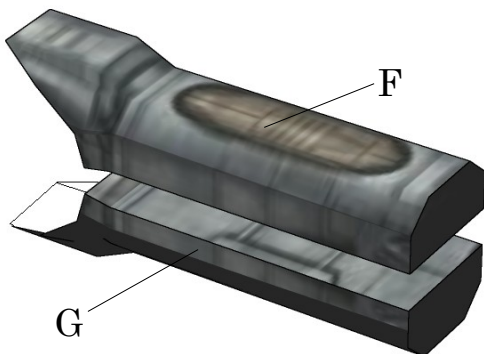


Attach part E.

7

F

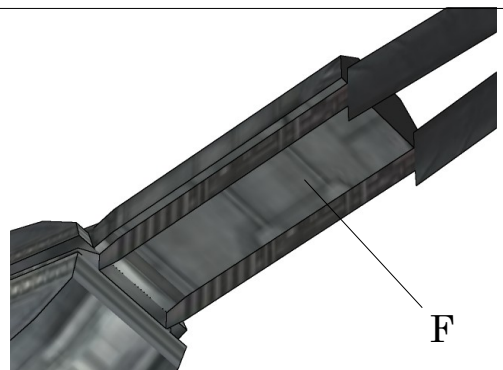
G



Assemble parts F and G.

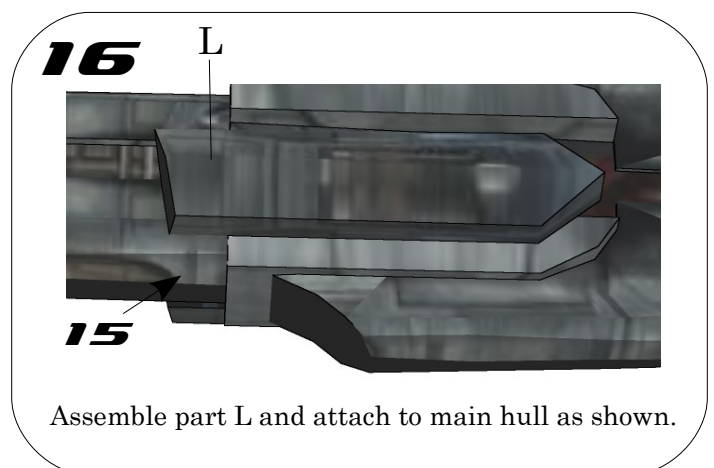
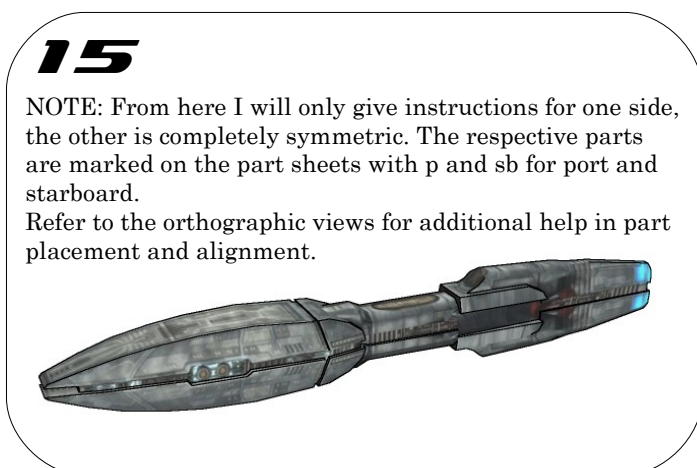
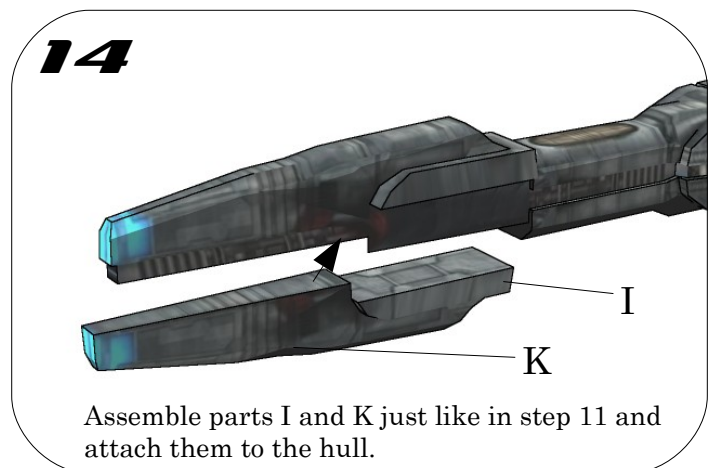
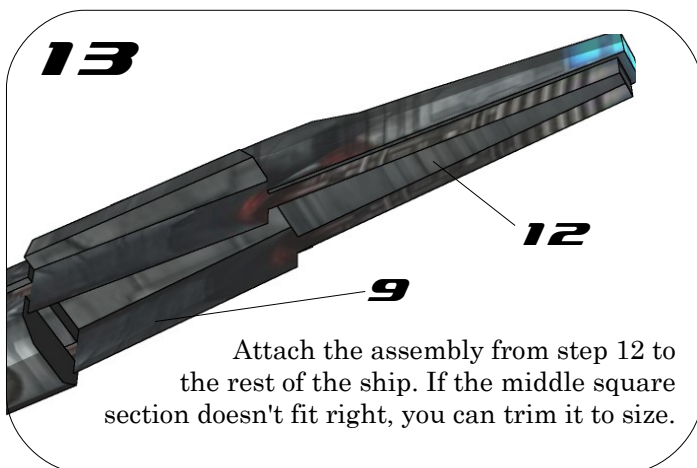
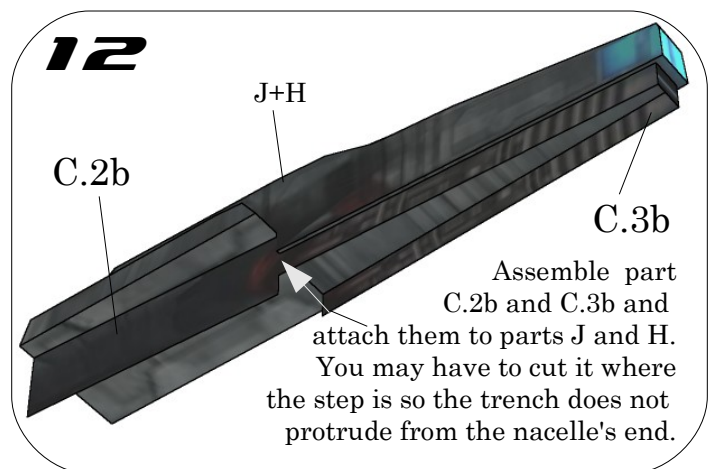
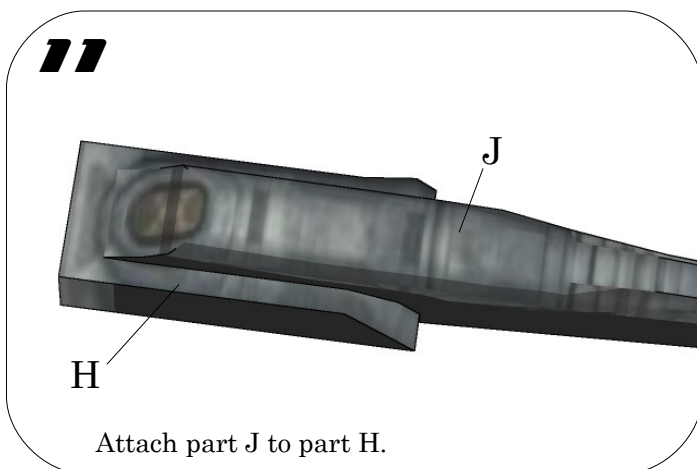
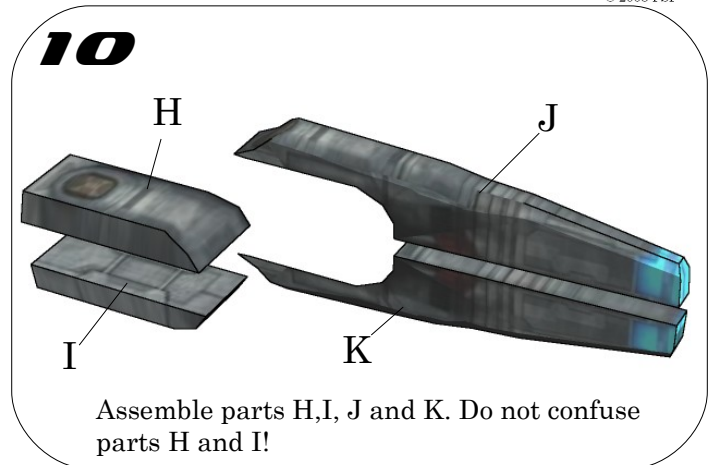
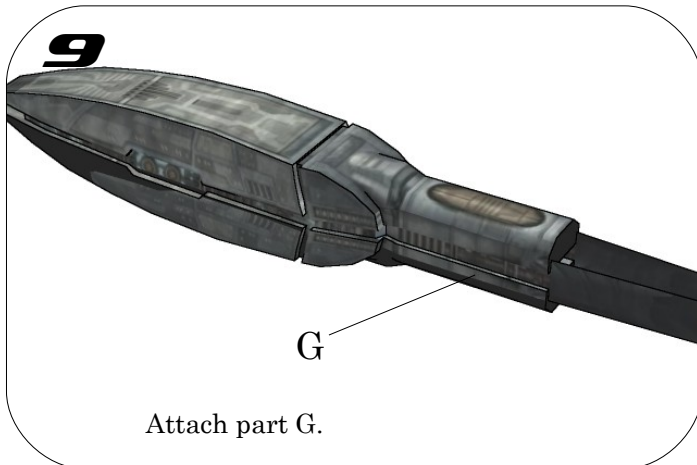
8

F

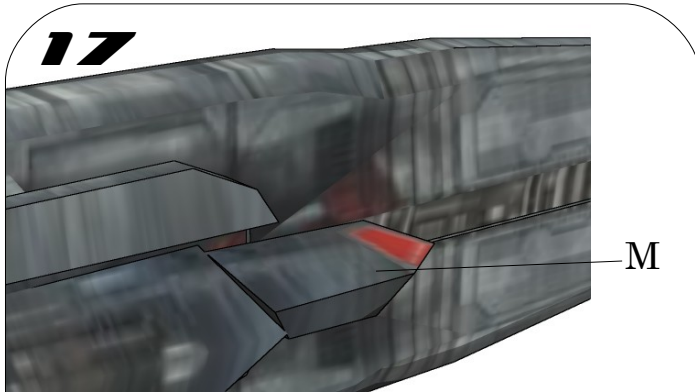


Attach part F.

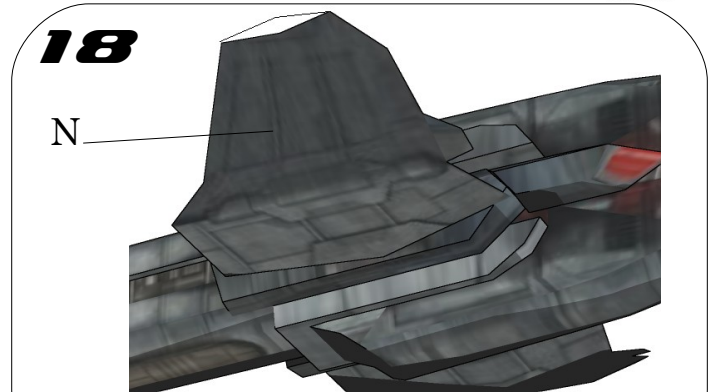
PSF: Andorian Battlecruiser (Kumari Class)



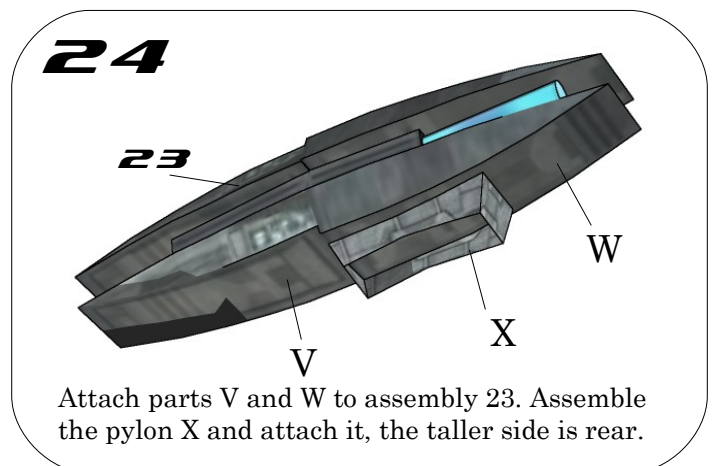
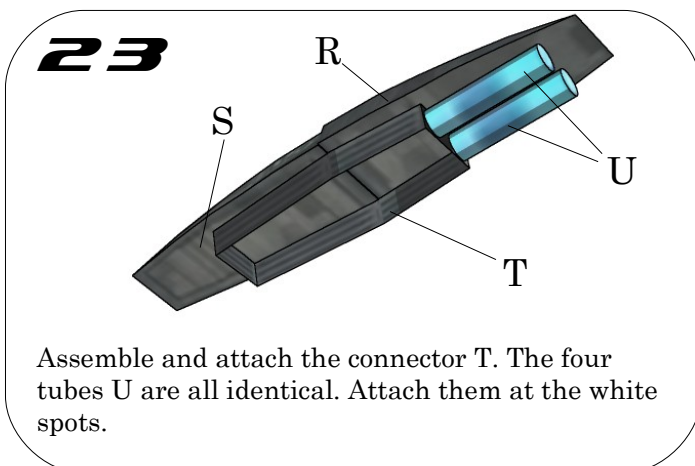
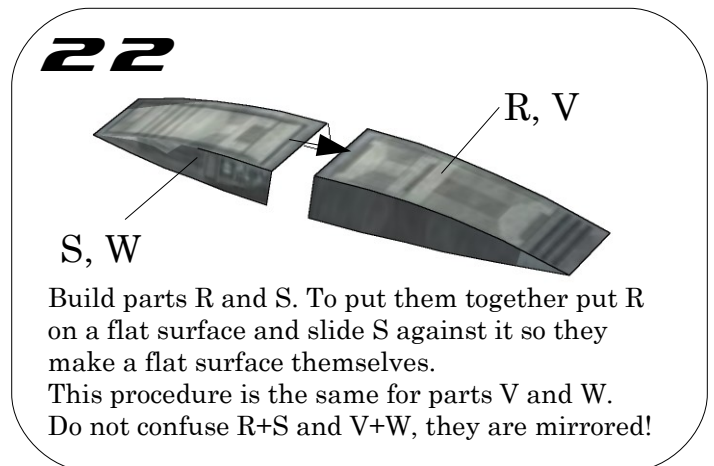
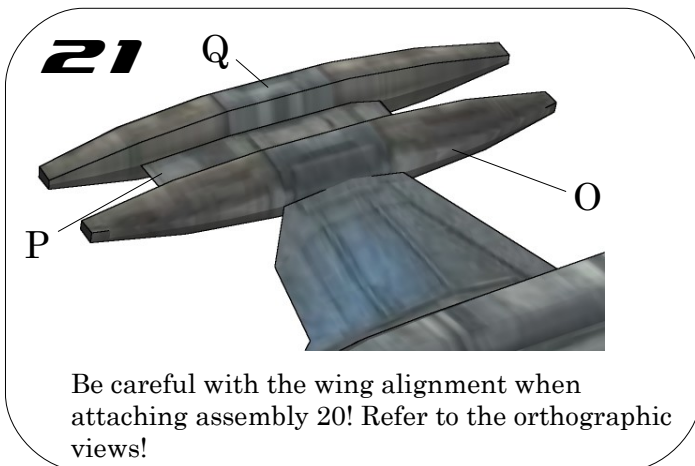
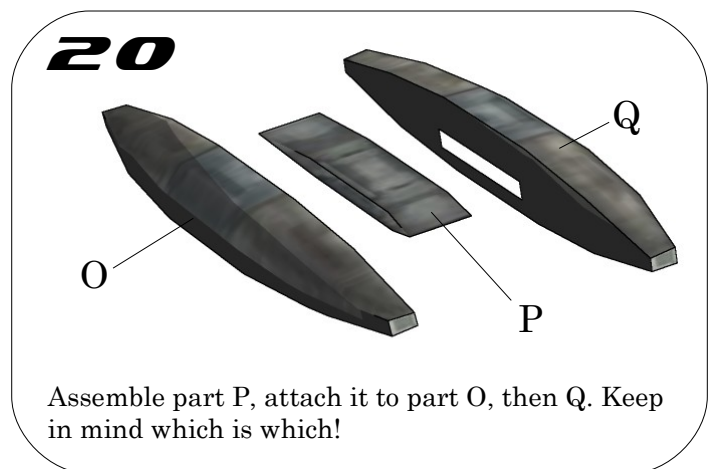
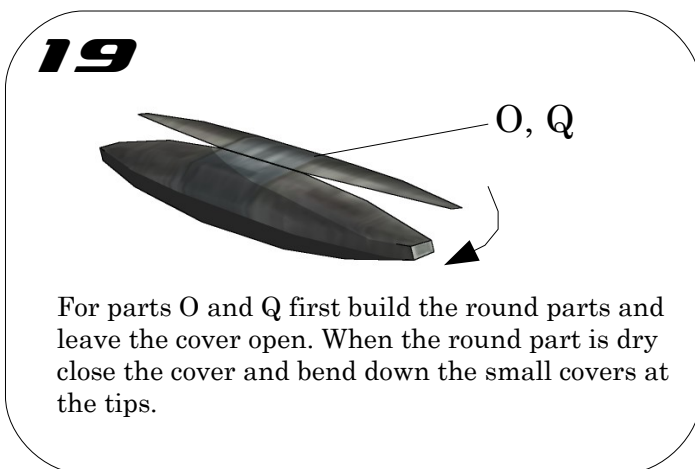
PSF: Andorian Battlecruiser (Kumari Class)



Assemble and attach part M as shown.



Assemble and attach parts N.

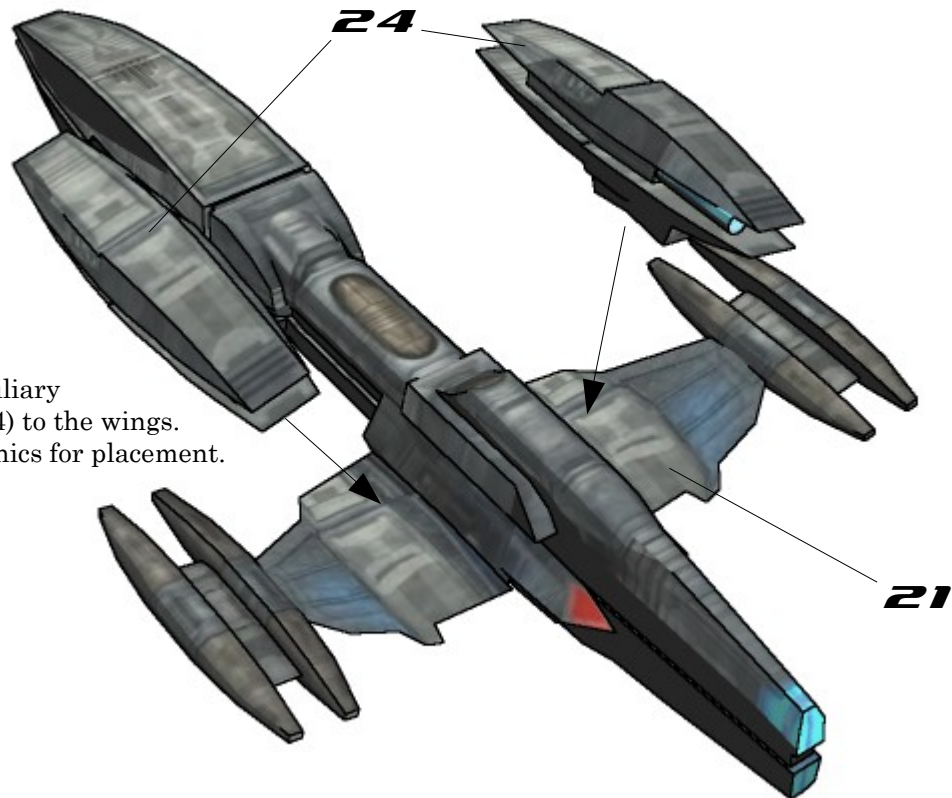


PSF: Andorian Battlecruiser (Kumari Class)

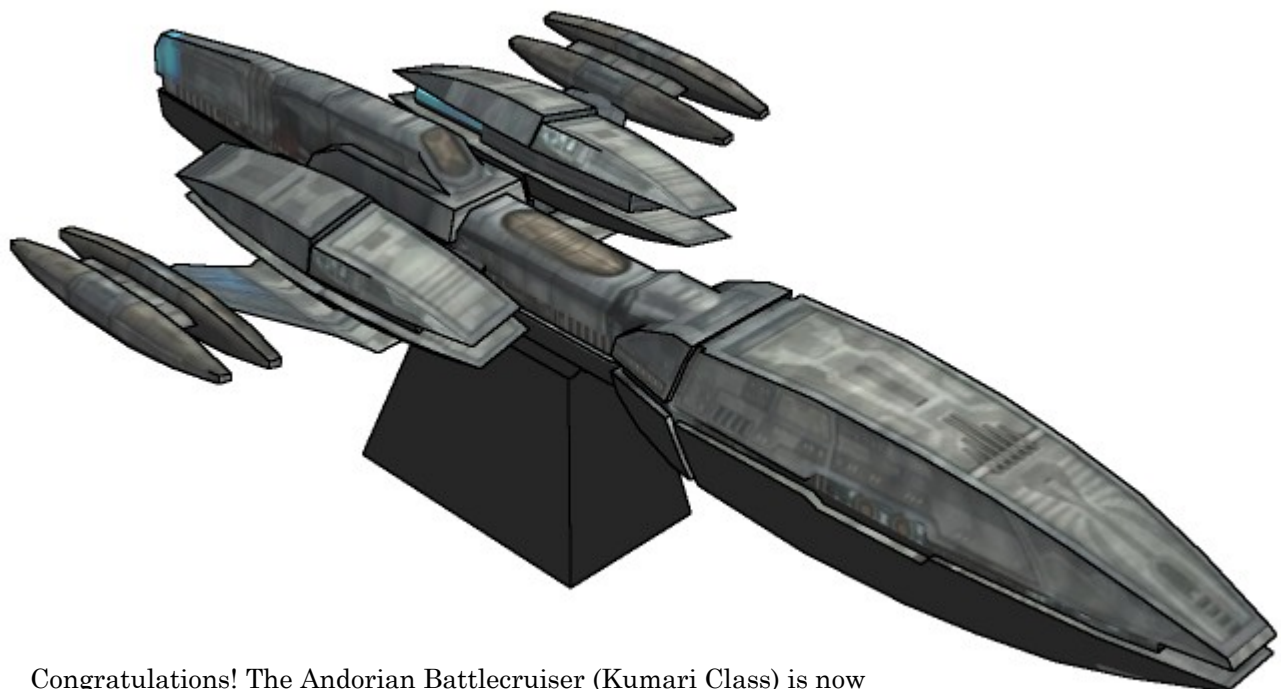


25

Finally, attach the auxiliary engine nacelles (step 24) to the wings. Also refer to orthographics for placement.



26



Congratulations! The Andorian Battlecruiser (Kumari Class) is now finished. You can put it on the display stand.
Thank you for building this model and always feel free to send me pics of the build to starfreak@gmx.net!!

PSF: Andorian Battlecruiser (Kumari Class)



The display stand is somewhat complex so it fits the middle section nicely, you can decide for yourself if you want to use the bottom cover. The lazy modeler might rather throw it away and cut off the flaps for it ;)

