

# BATTLESTAR GALACTICA

## COLONIAL ONE



This cardmodel is free. It is a non-profit fan project and for personal use only. No commercial use.

Battlestar Galactica ©, (R) and TM 1978 - 2008 Universal City Studios / Sci-Fi Channel. No infringement intended.

Original 3D model and textures by the creators of the Battlestar Galactica Ship Pack Coxson, MadJohn, and Dave975. Converted into a SketchUp model by Marian87.

Cleanup and prep, retexturing, unfolding and arrangement, display stand and new pylon bridge parts by Marcell "Revell-Fan" von dem Berge (11/2011).

To know more read this thread:  
<http://www.zealot.com/forum/showthread.php?t=151556>

Visit <http://sketchup.google.com/3dwarehouse/> to get the .skp 3D model.

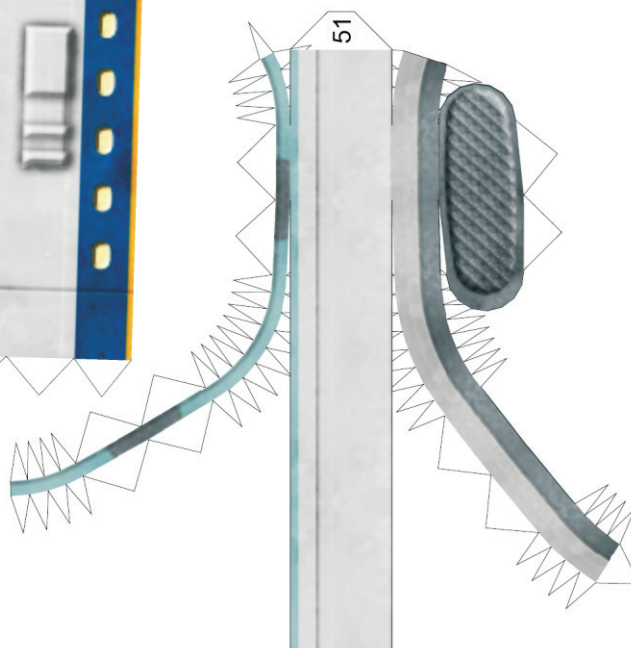
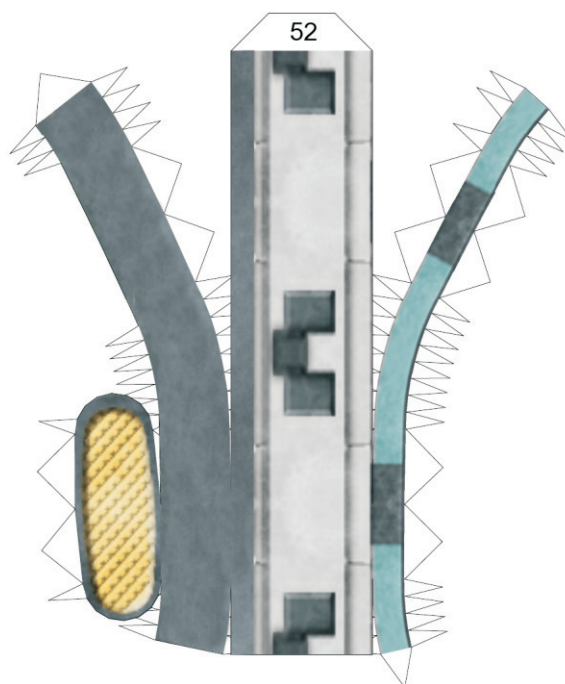
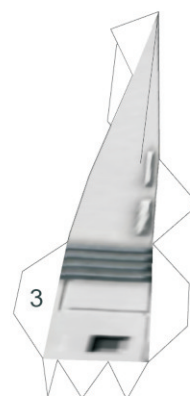
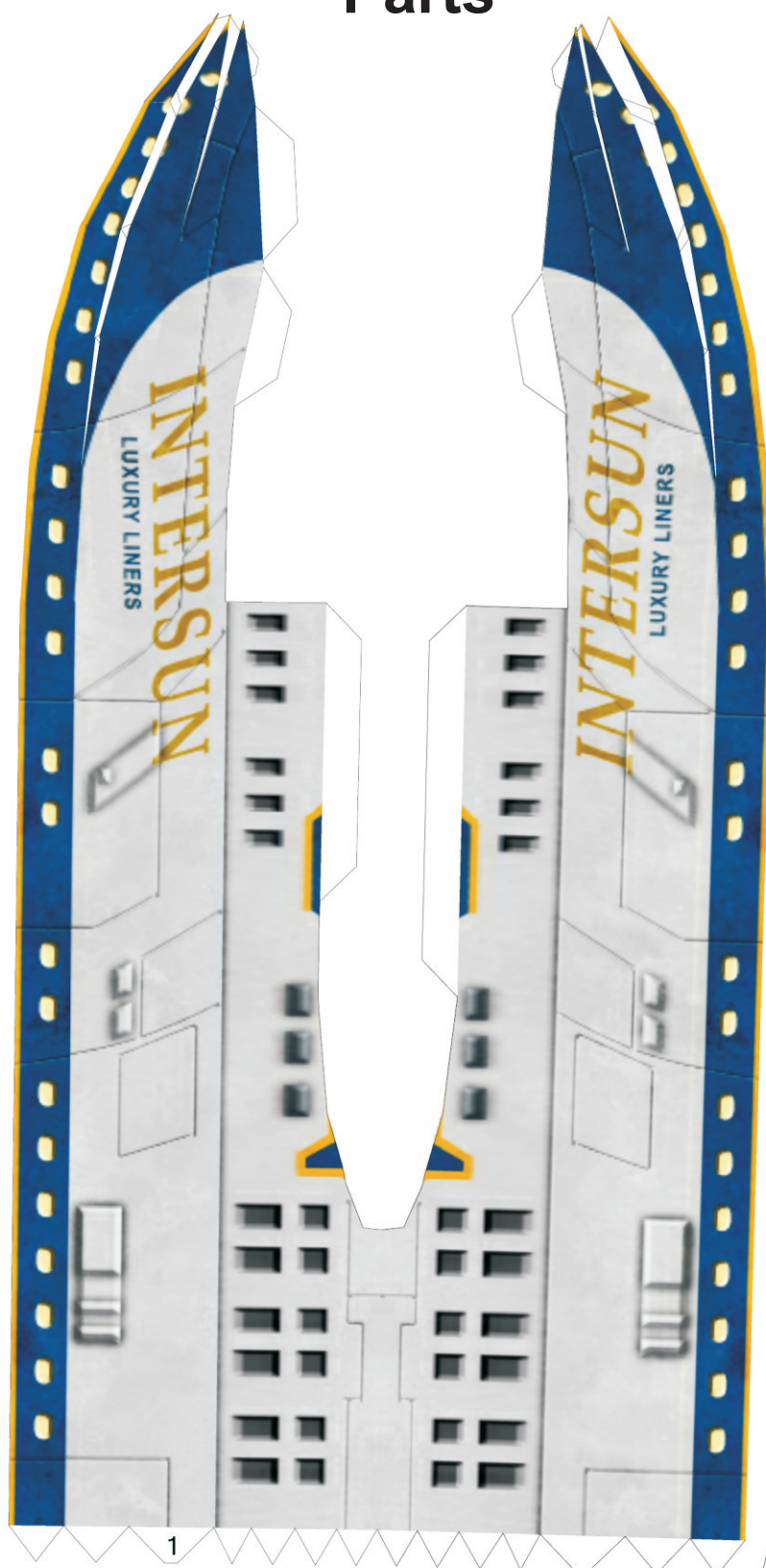
Please post pictures of your builds on [www.zealot.com](http://www.zealot.com) or send them to [gal78@hotmail.de](mailto:gal78@hotmail.de) (please refer to "model pics" or your mail will be regarded as spam).

Have fun and enjoy!

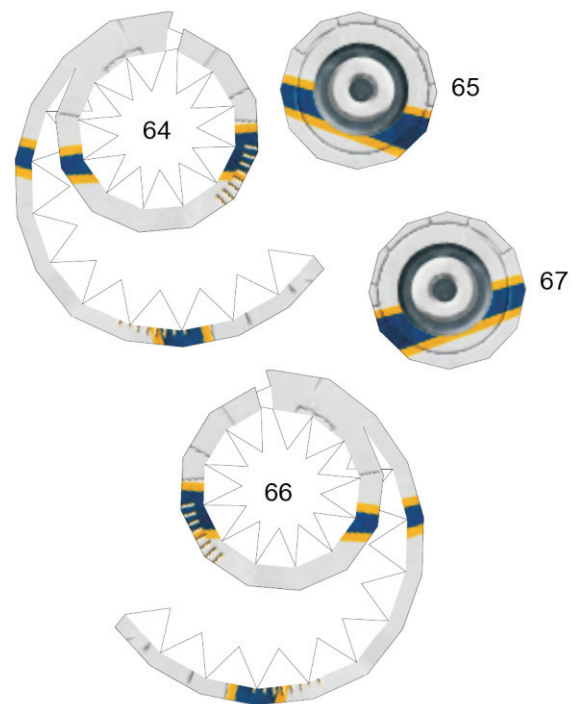
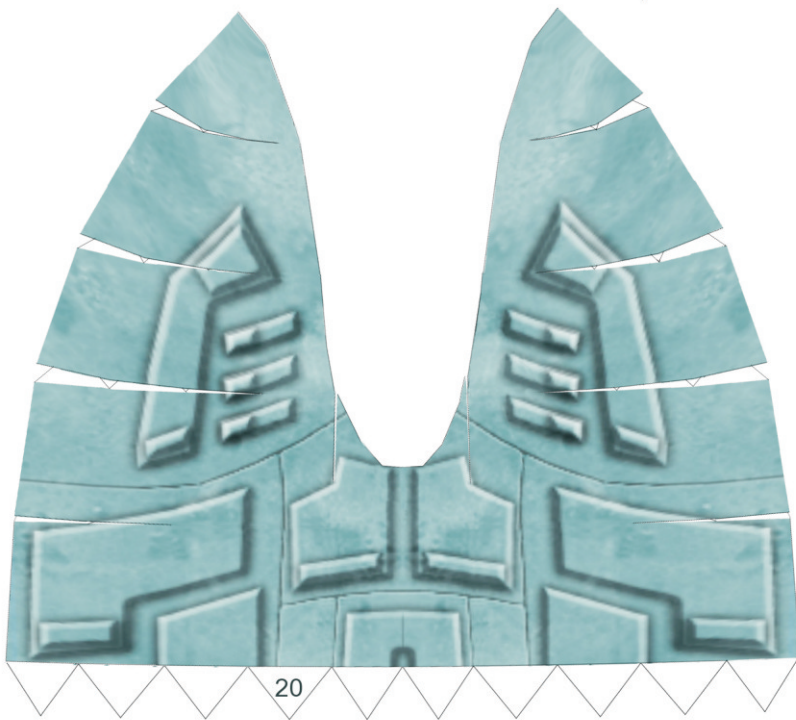
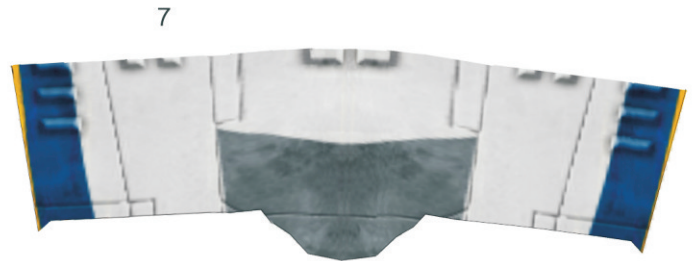
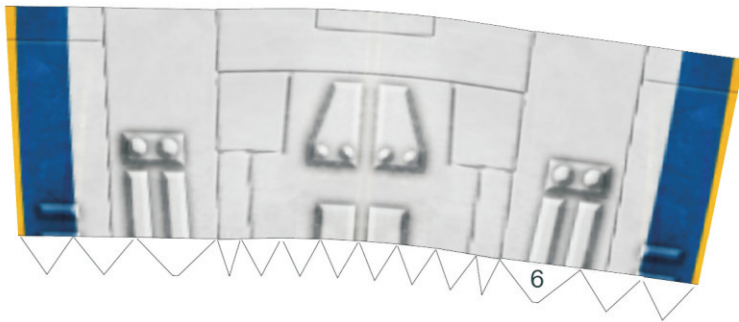
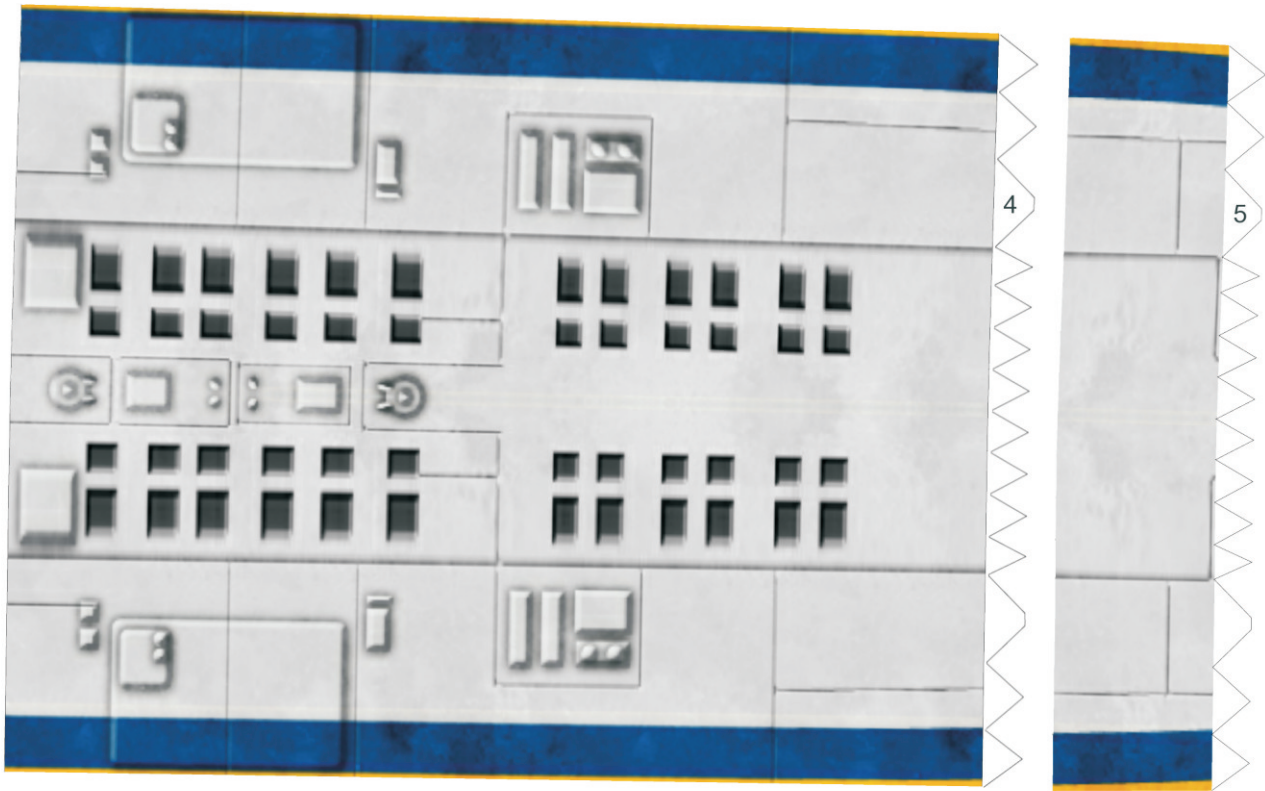


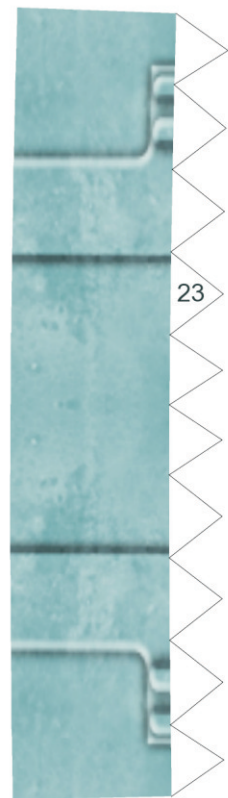
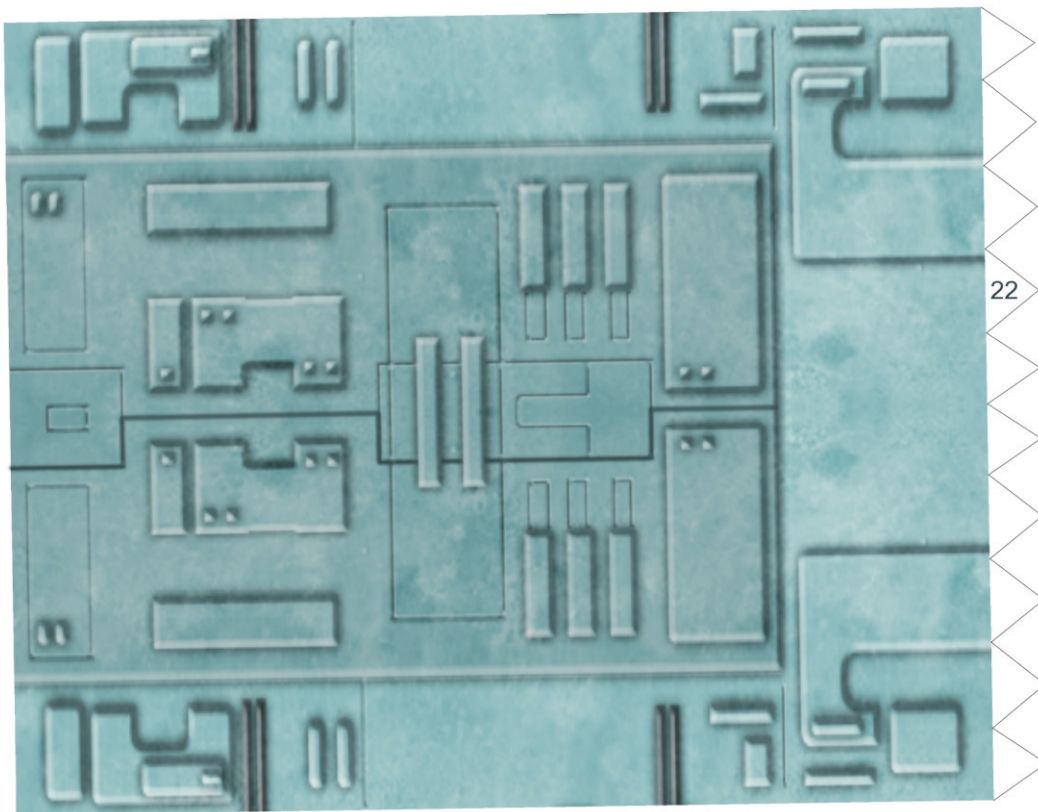
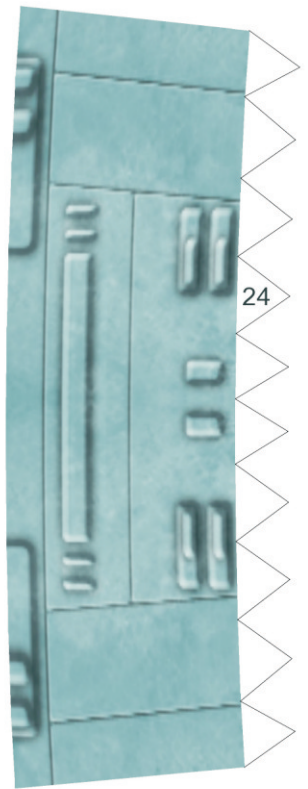
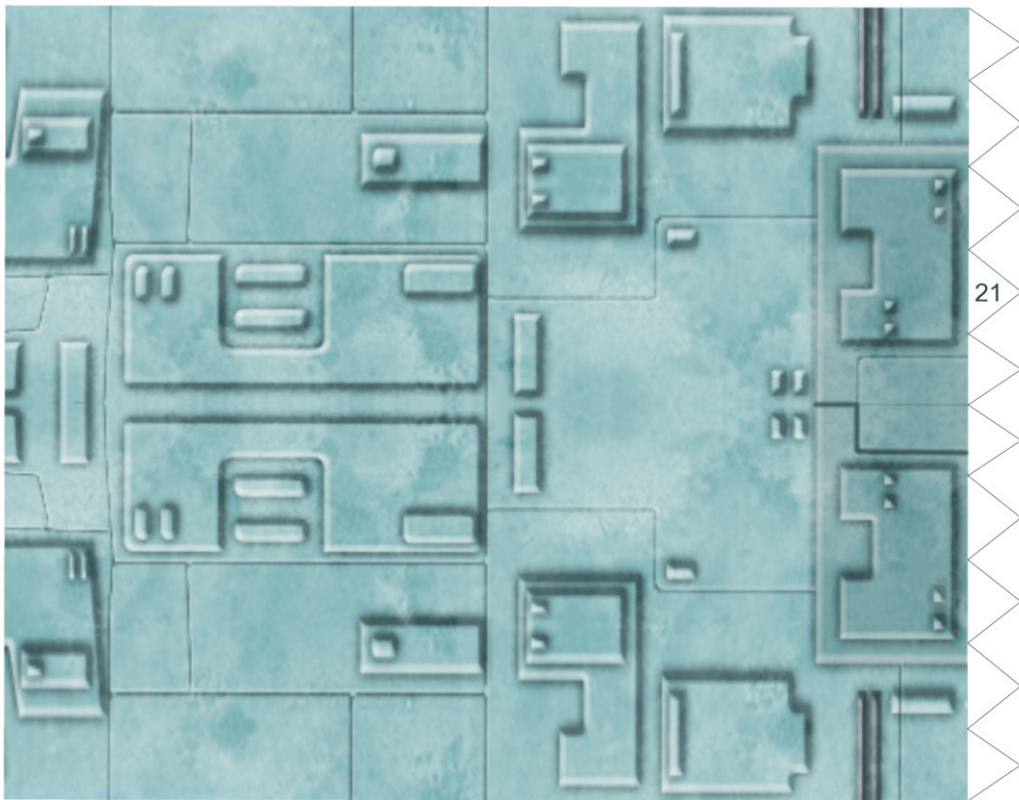
11/2011

# Parts

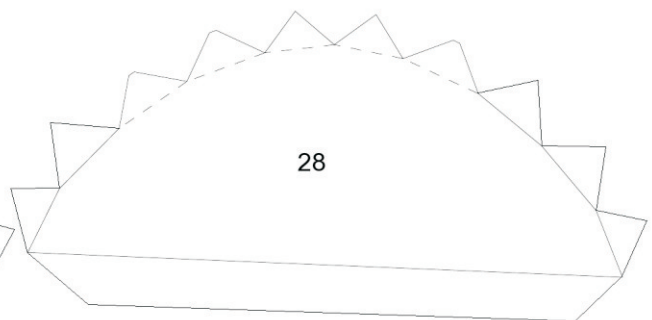
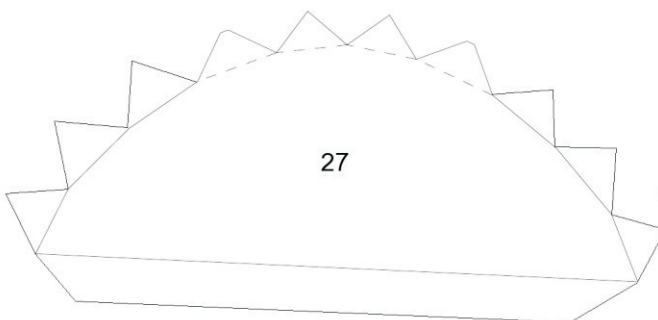
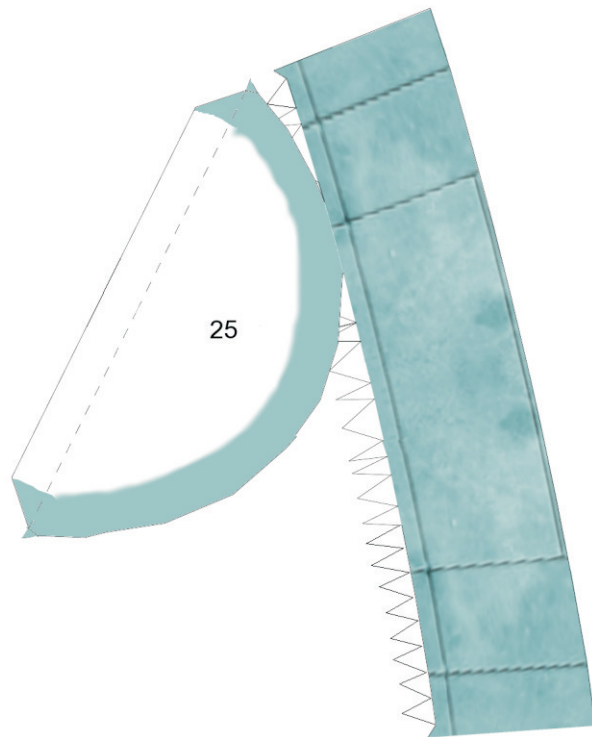
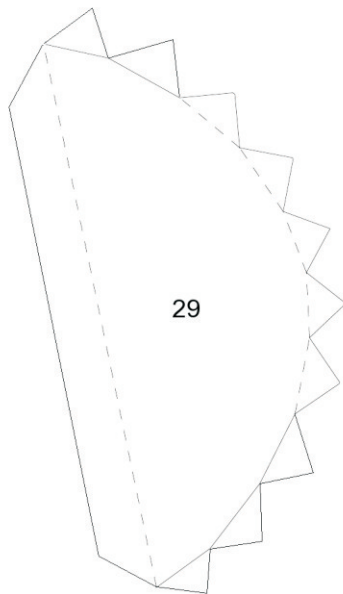
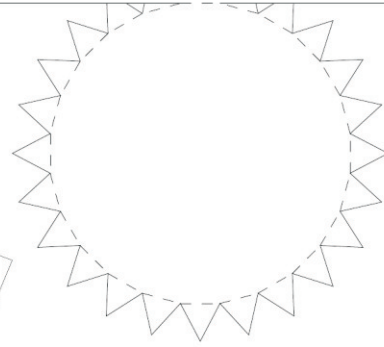
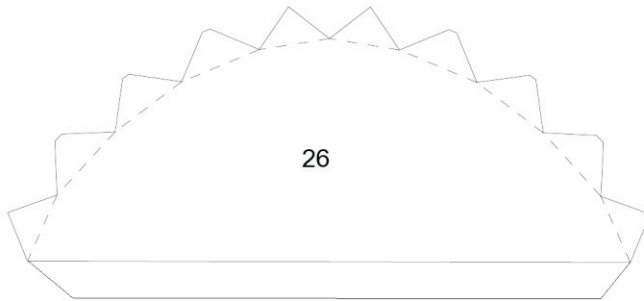
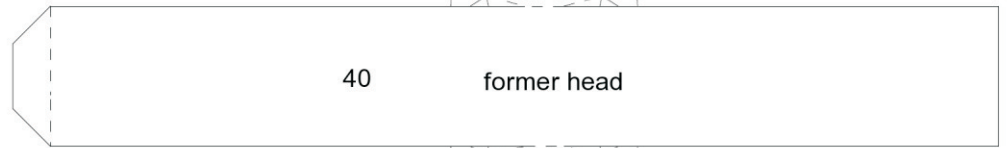
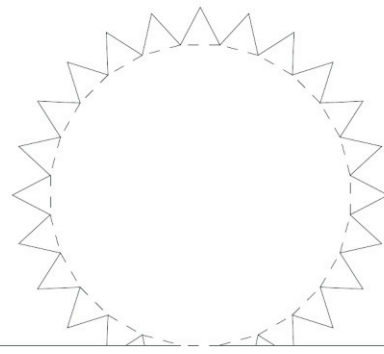


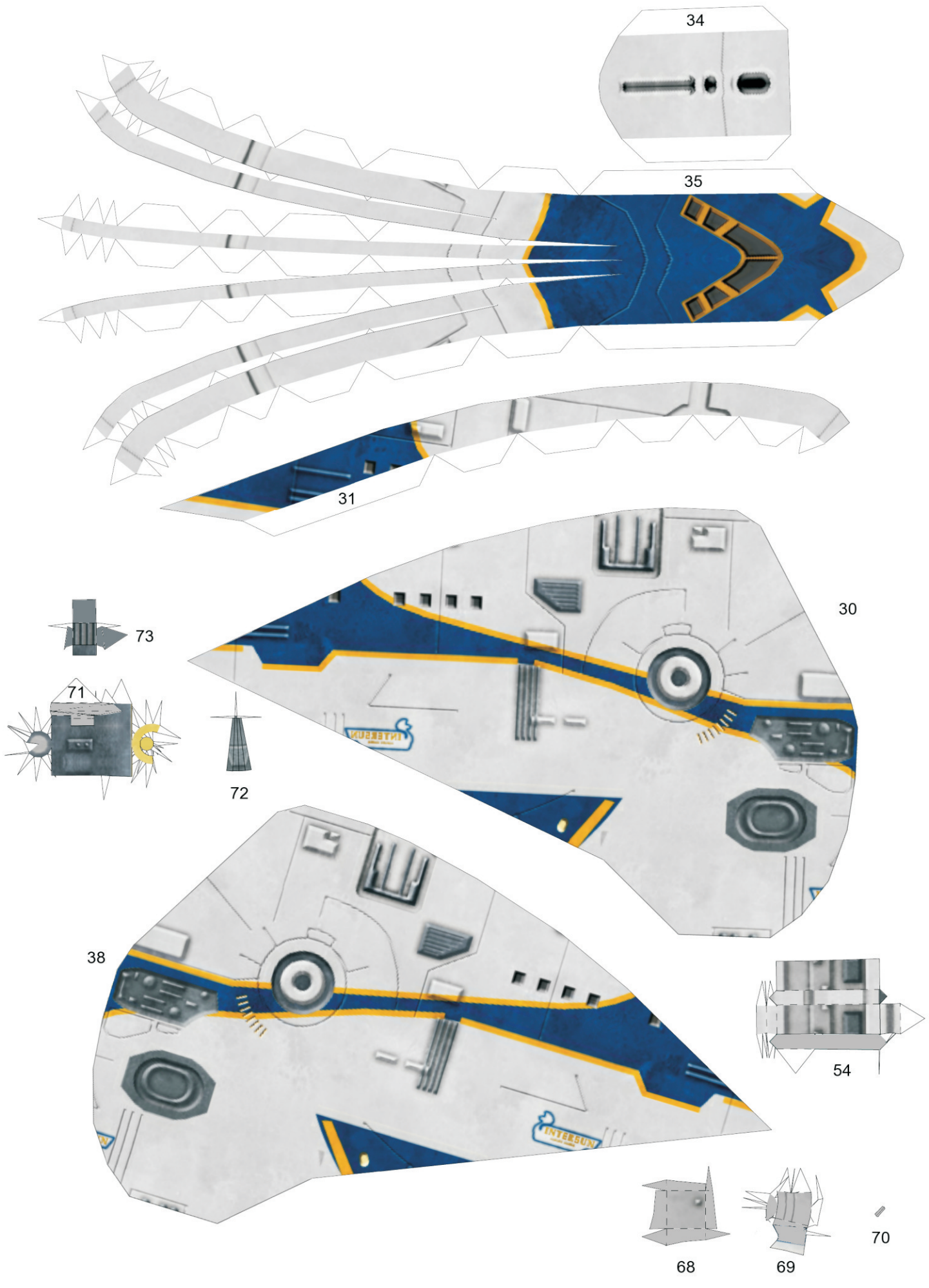




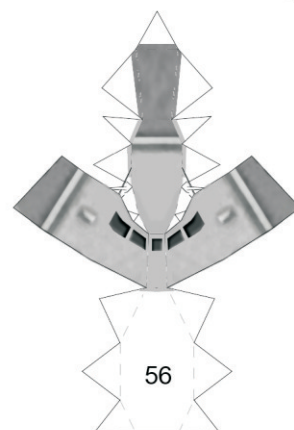
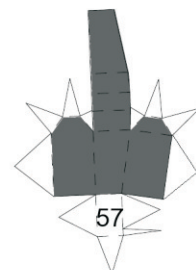
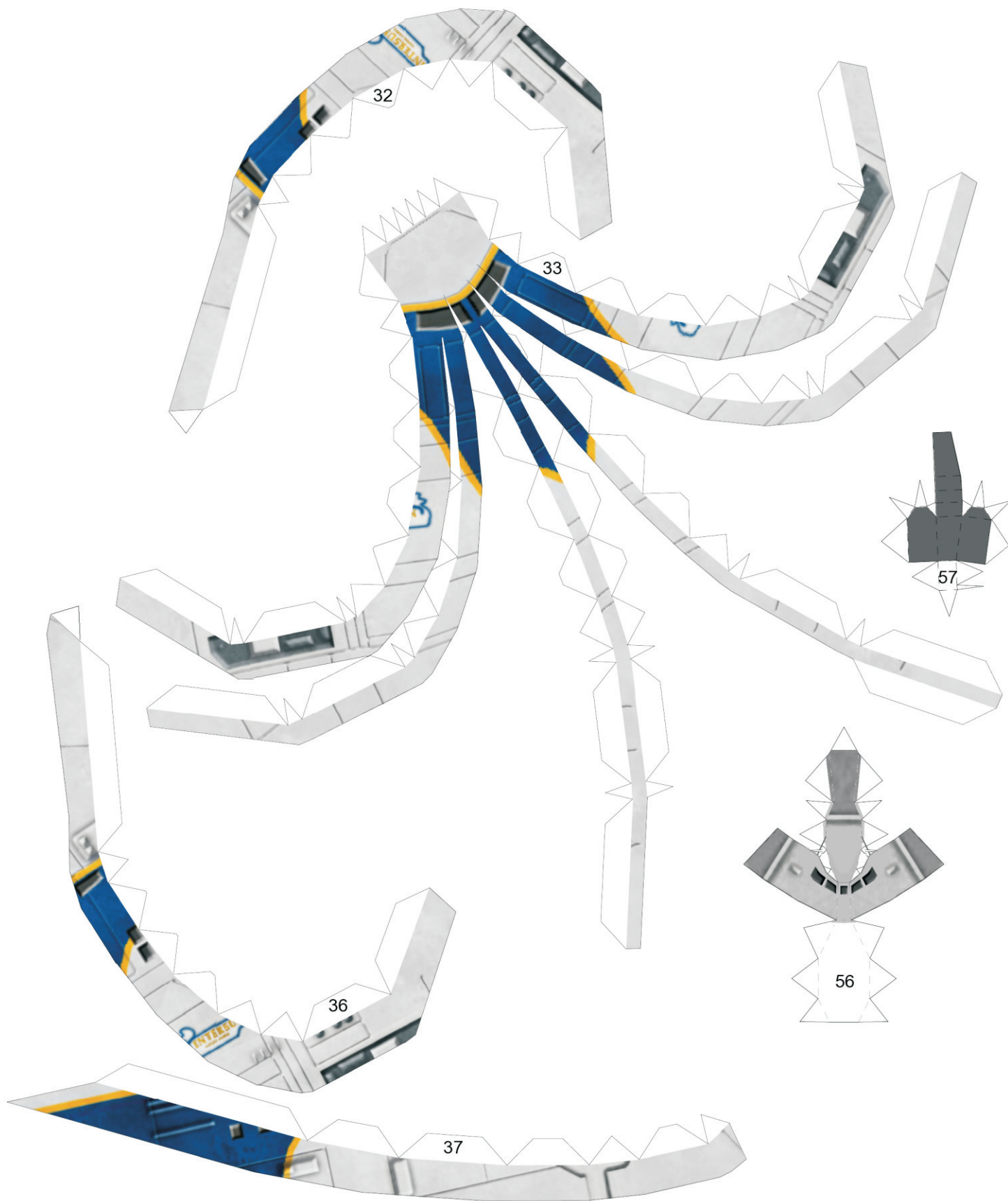


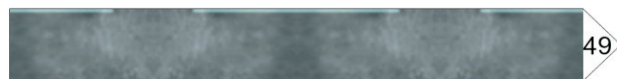
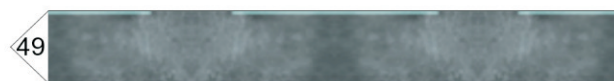
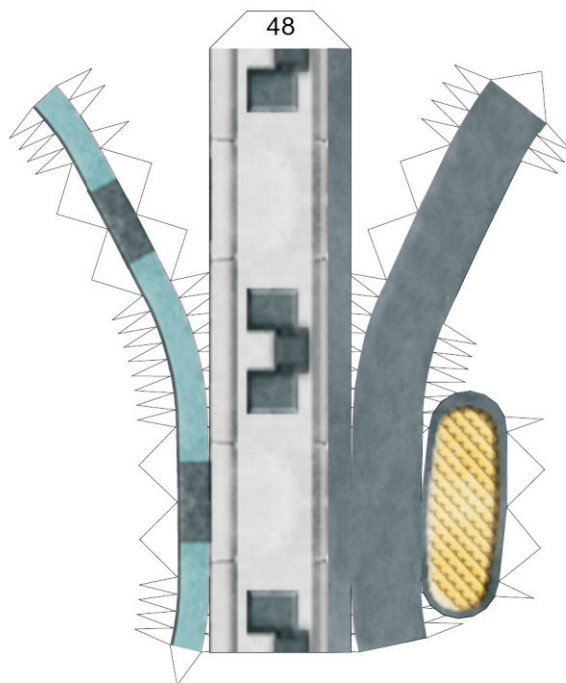
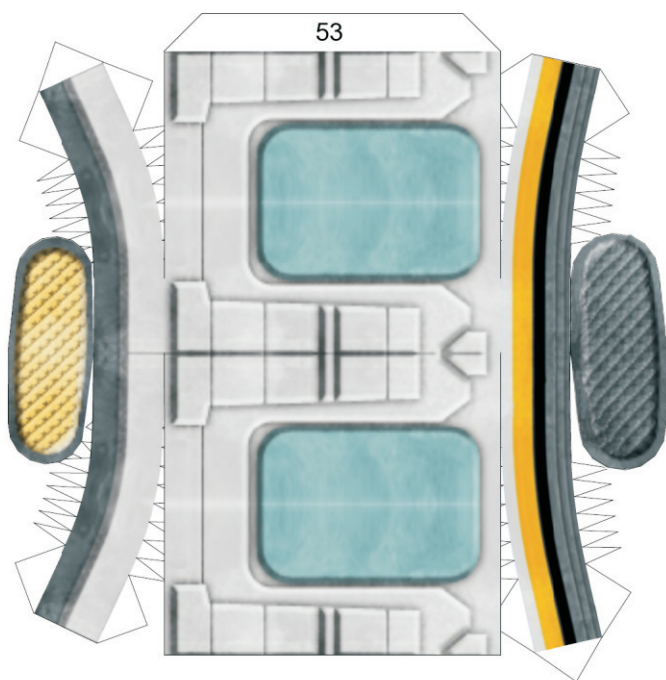
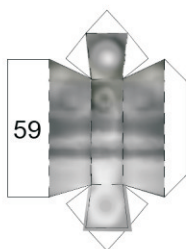
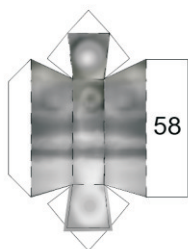
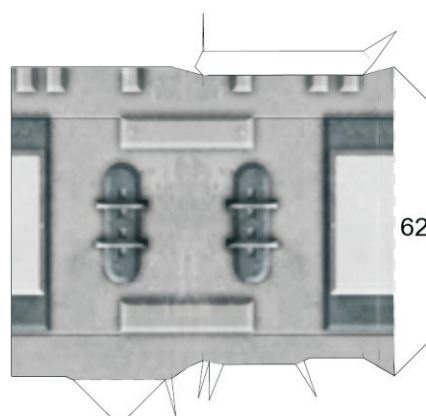
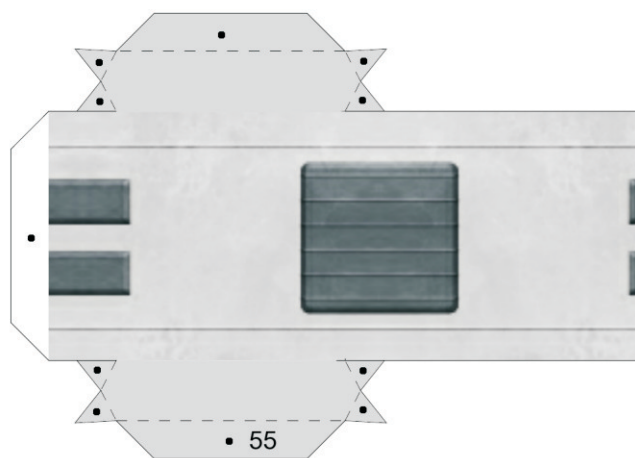
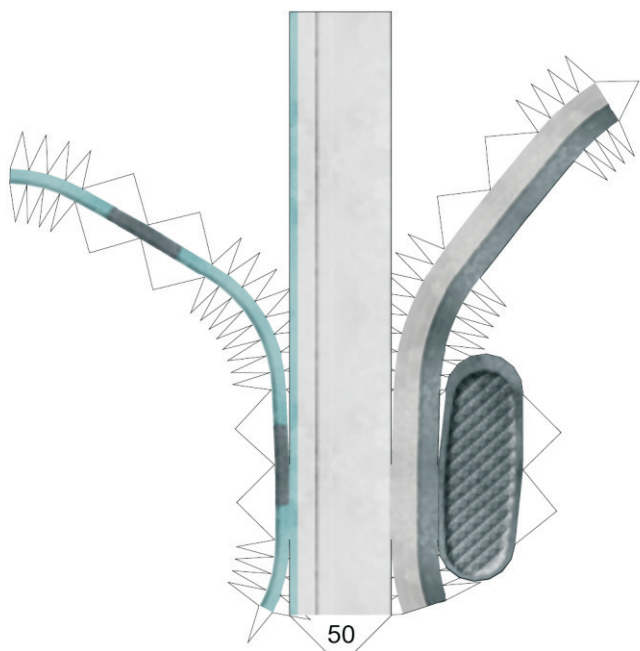




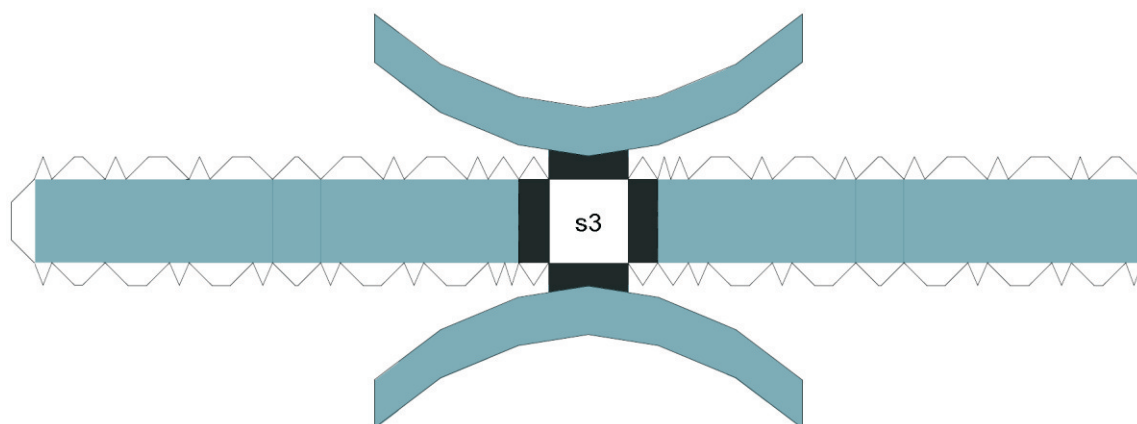
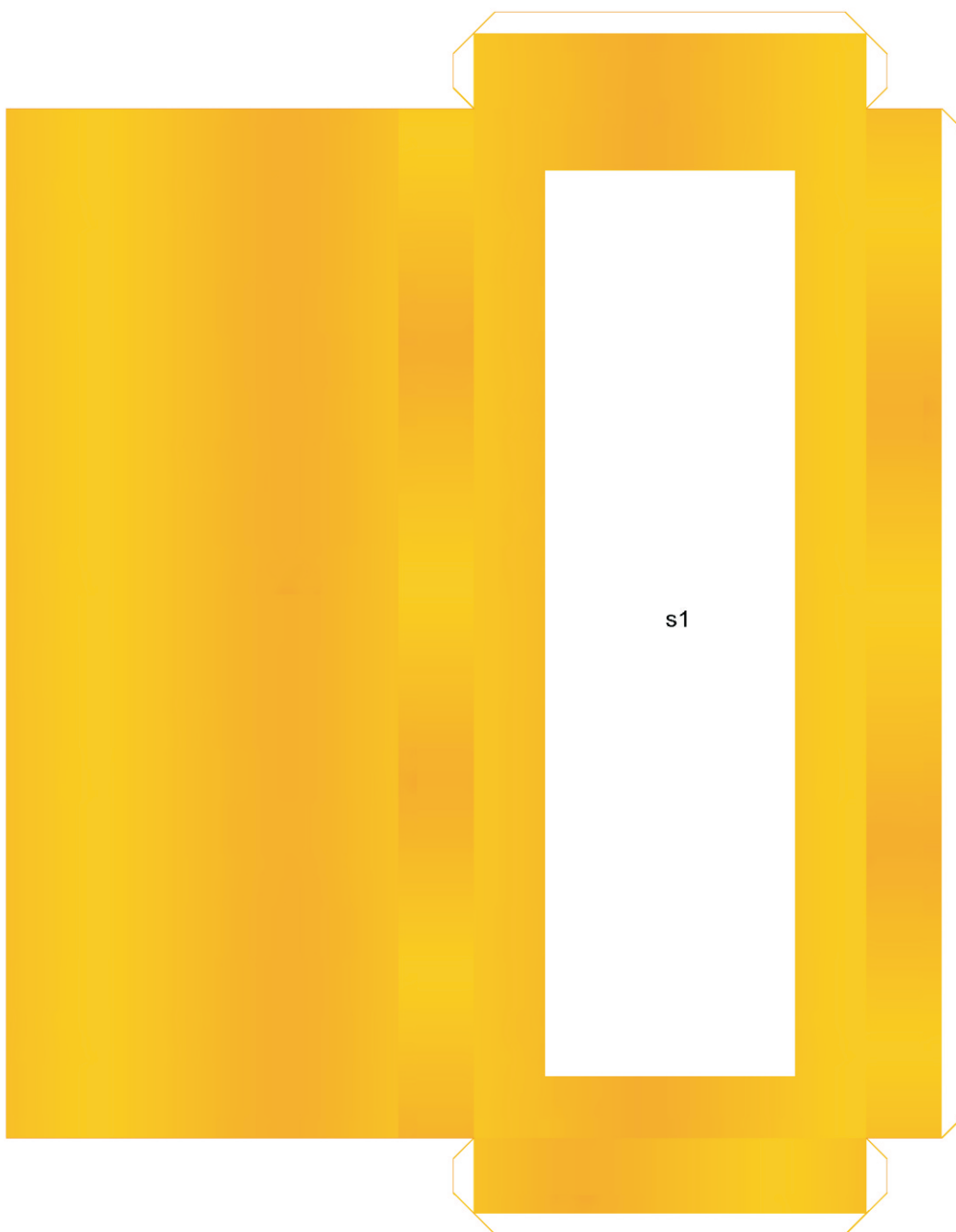






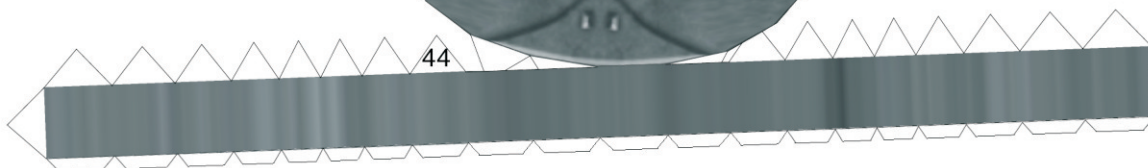
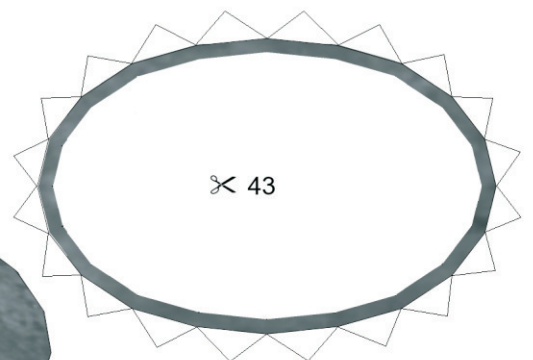
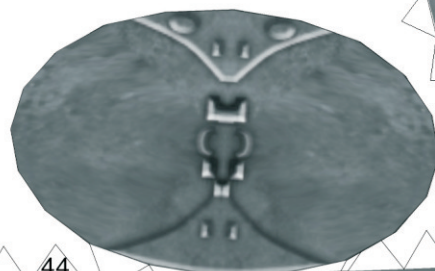
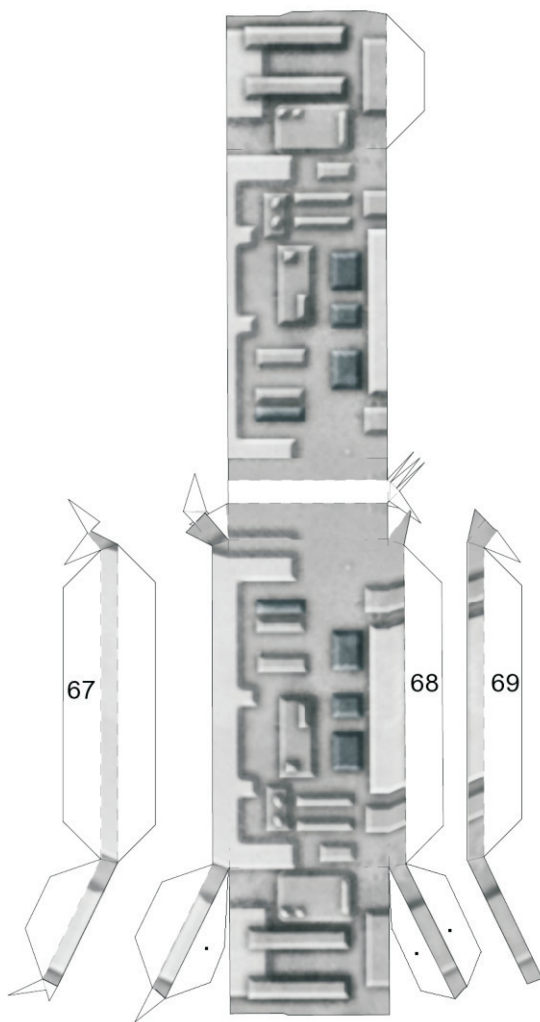
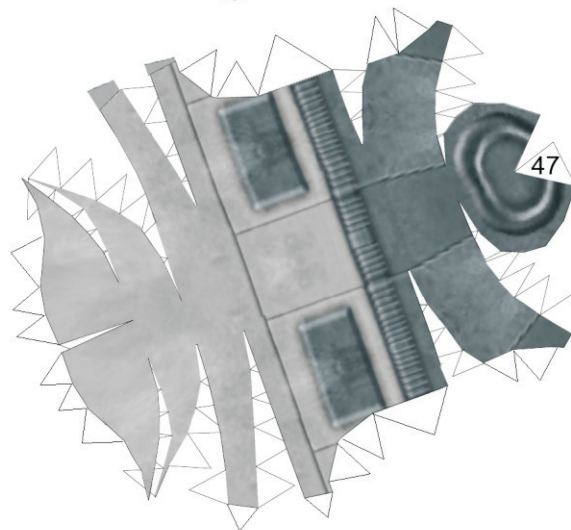
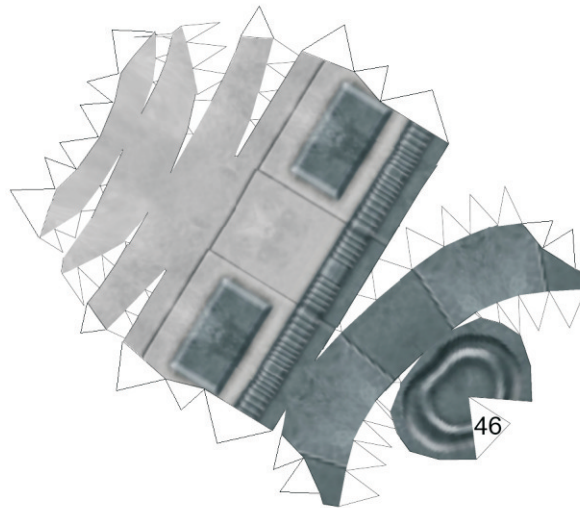
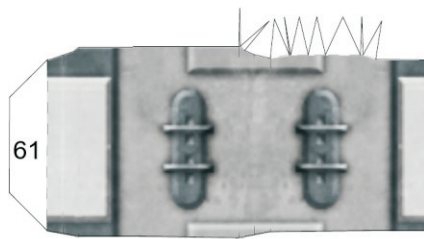
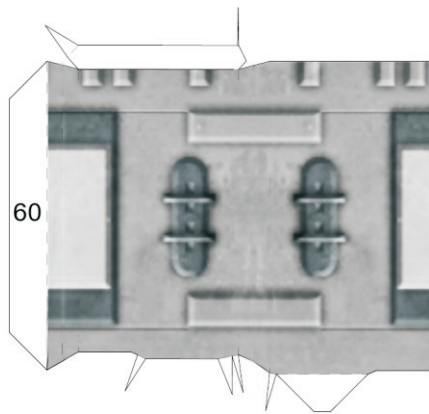






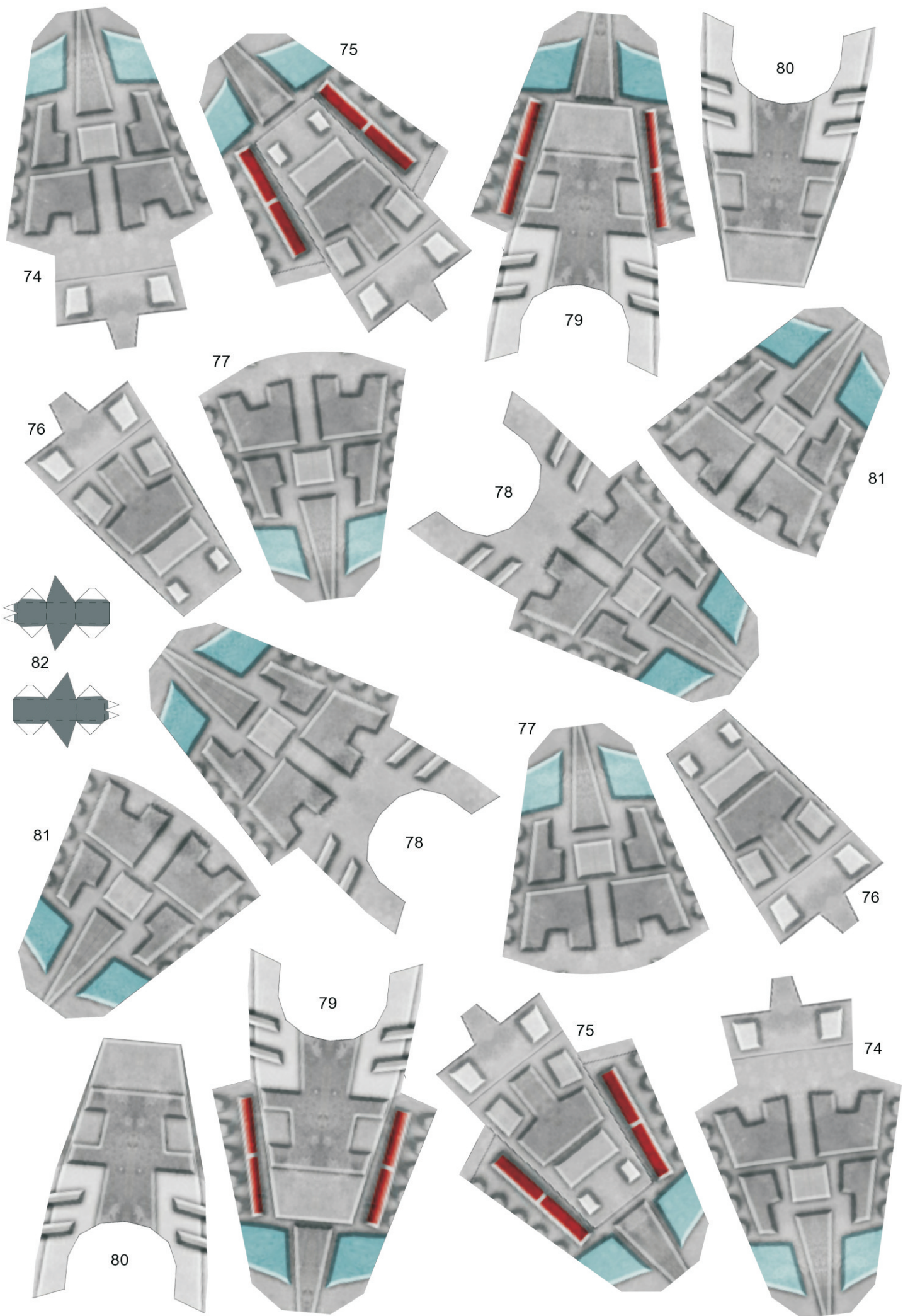


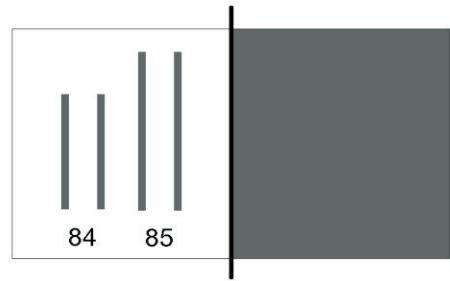




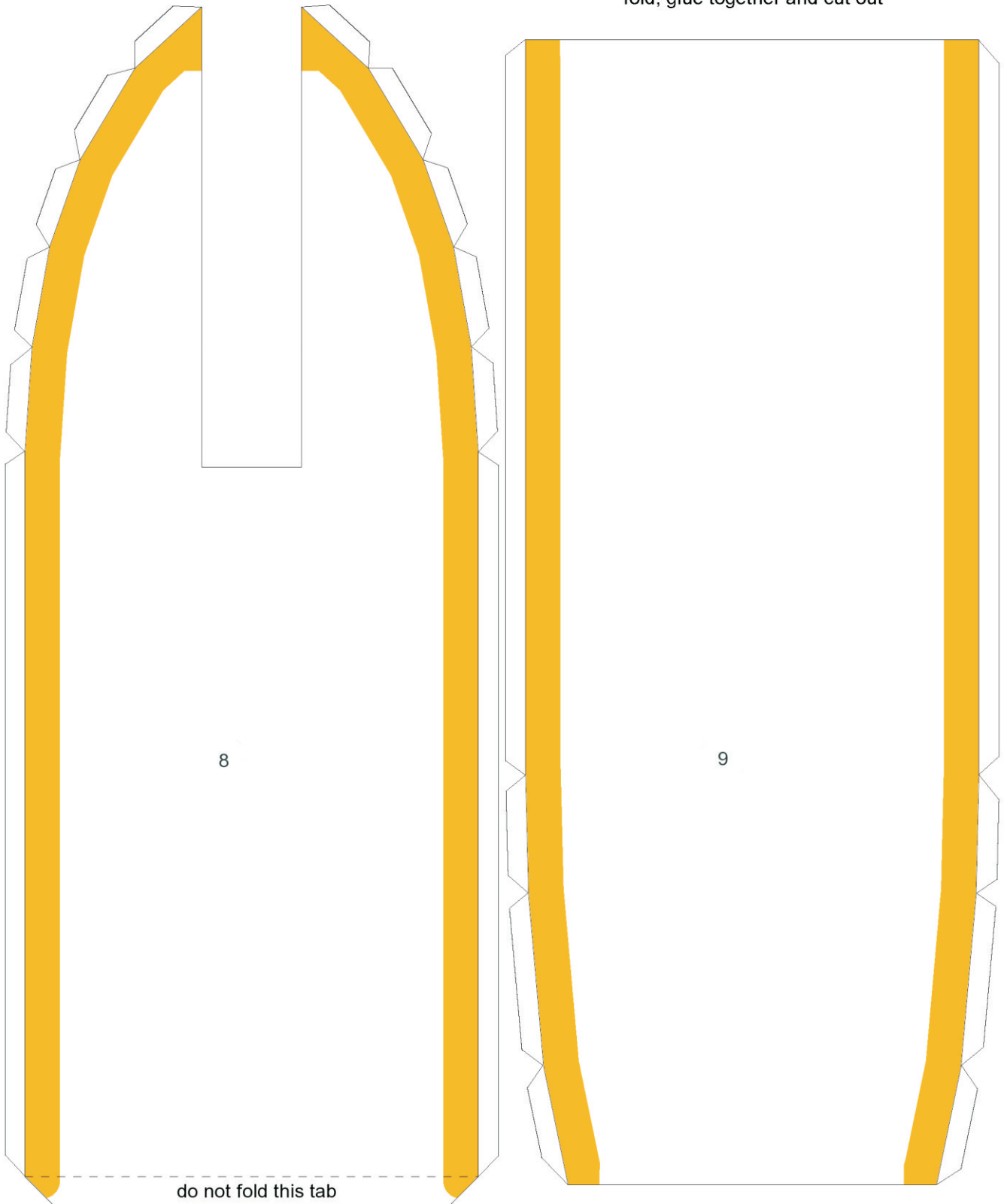


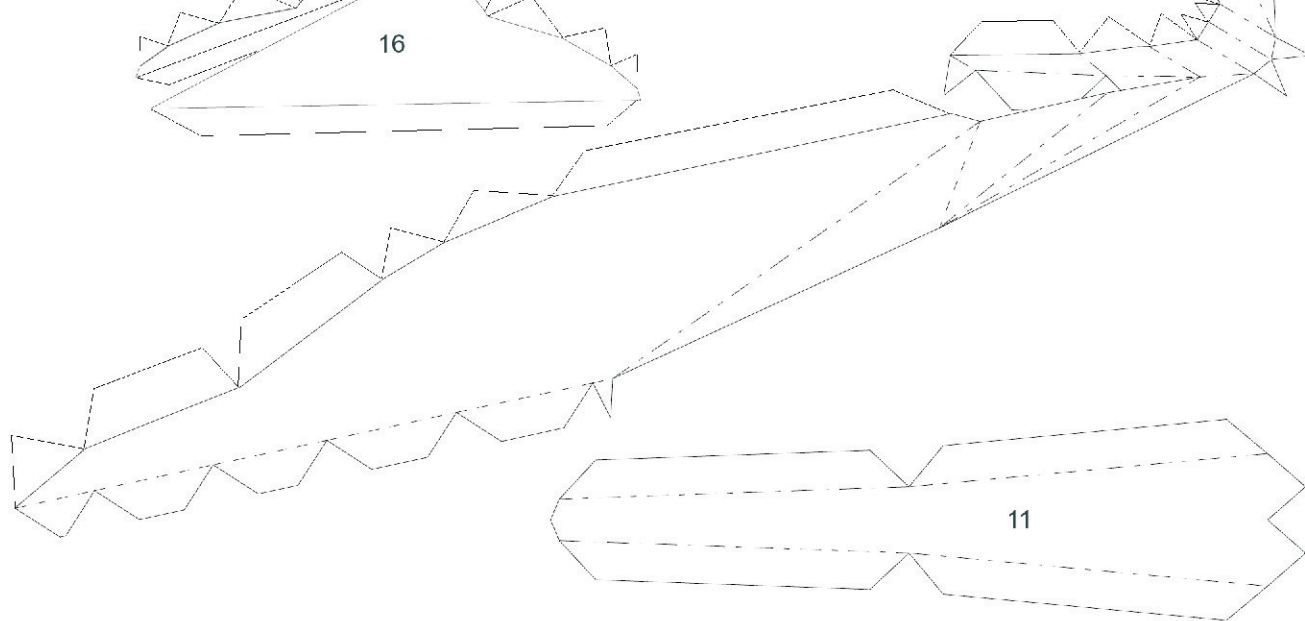
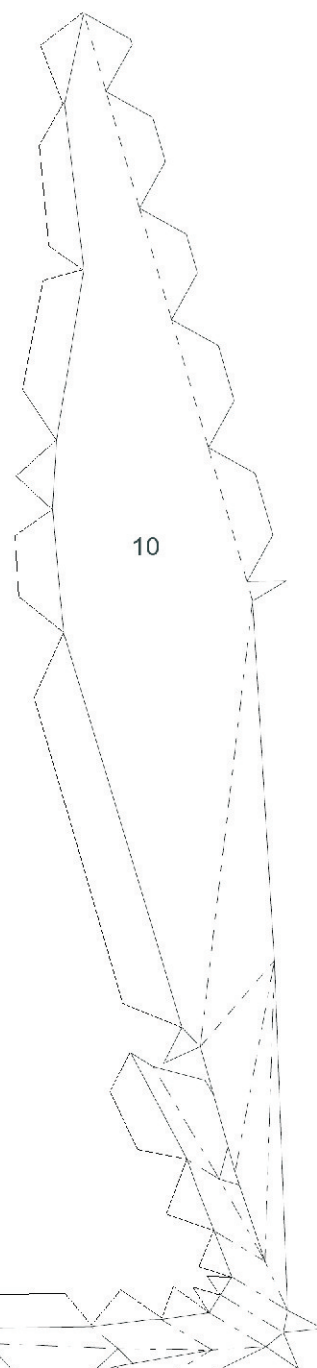
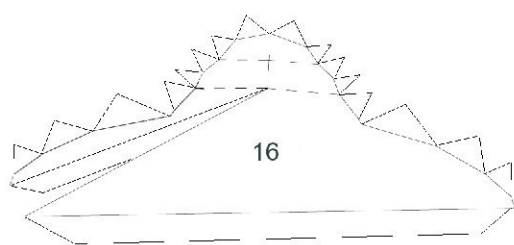
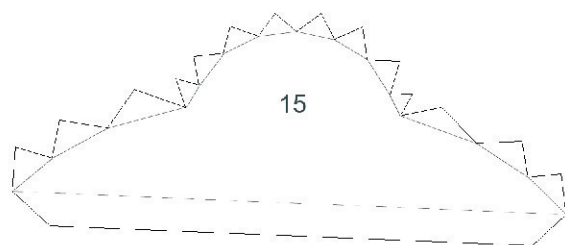
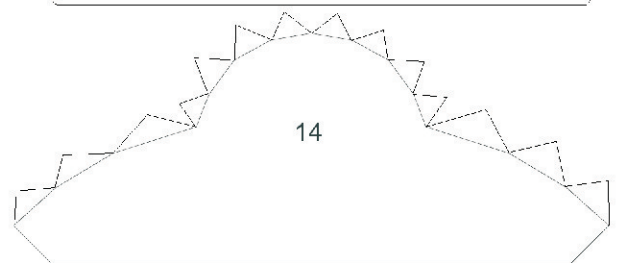
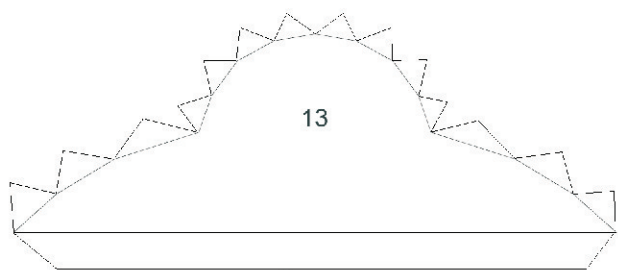
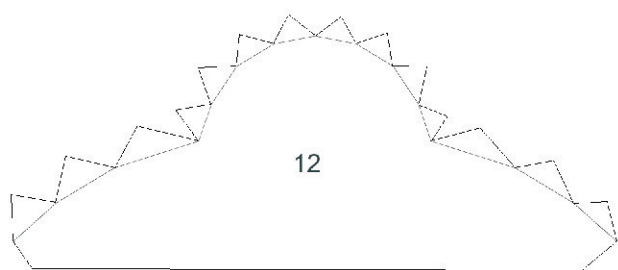




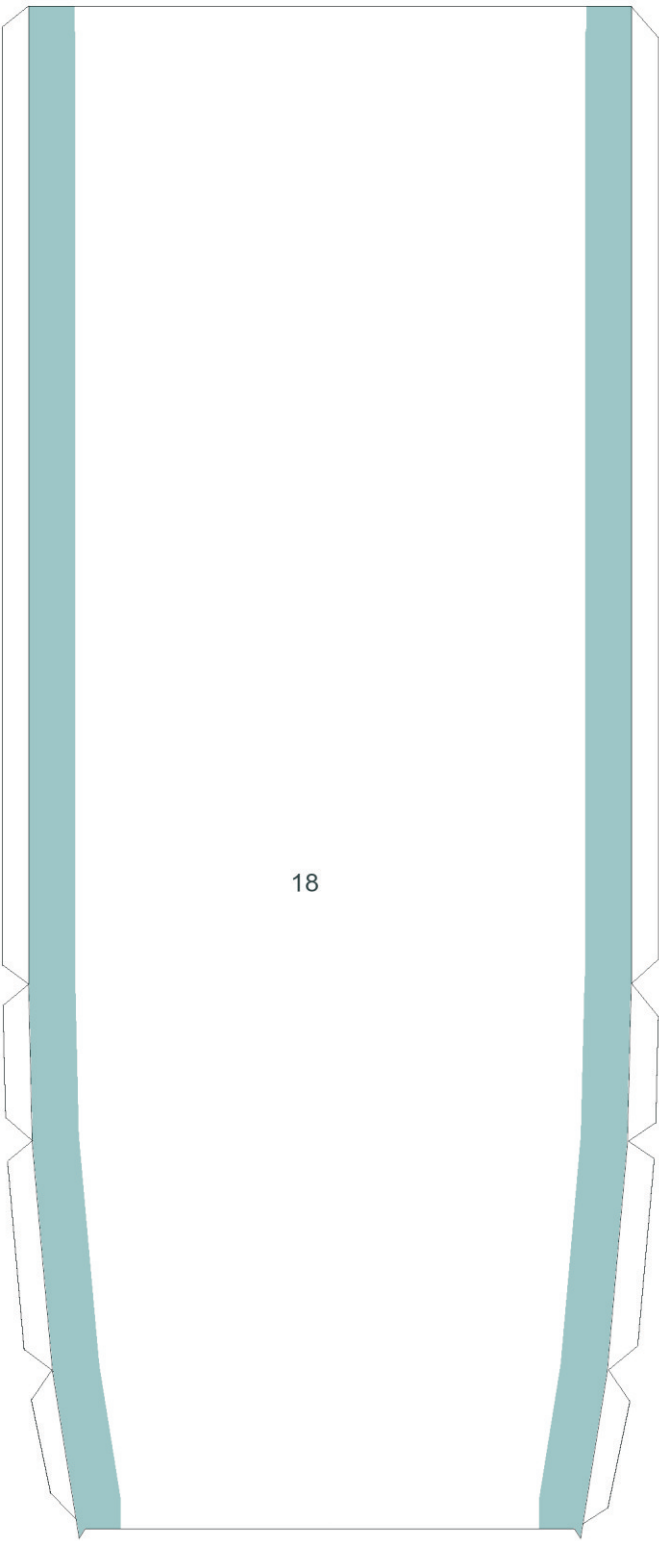
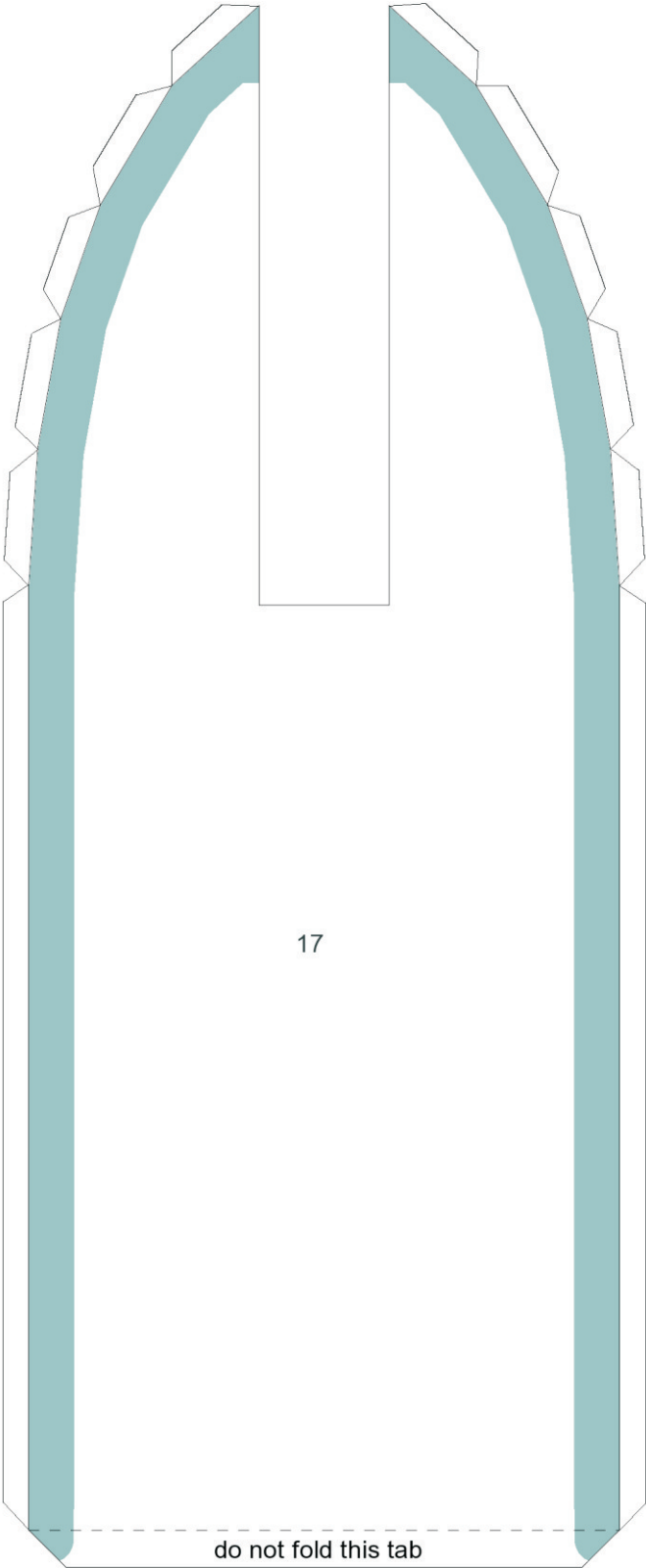
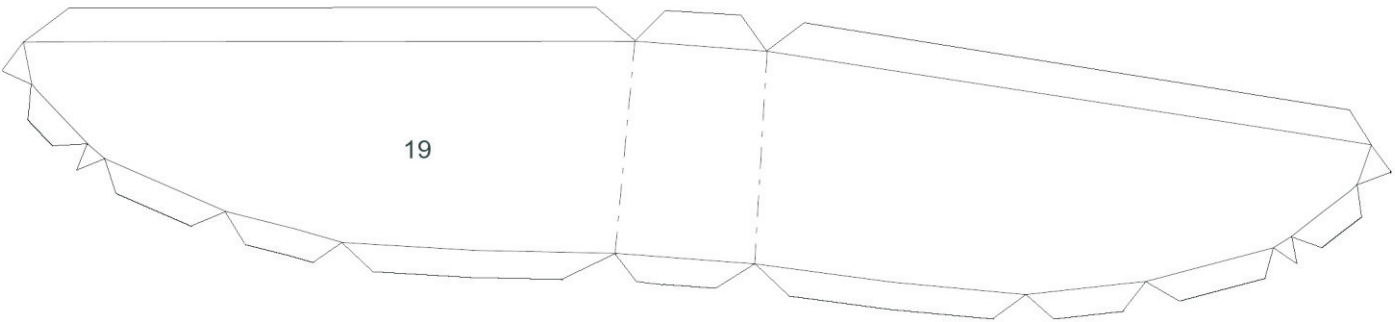


fold, glue together and cut out





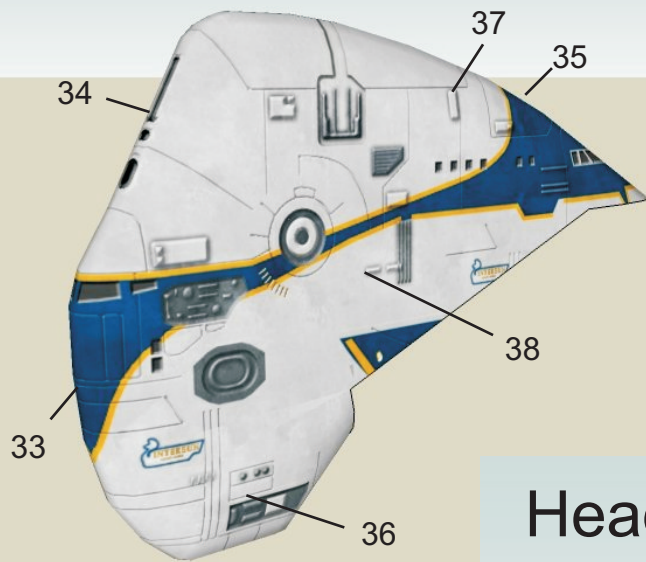




# Assembly

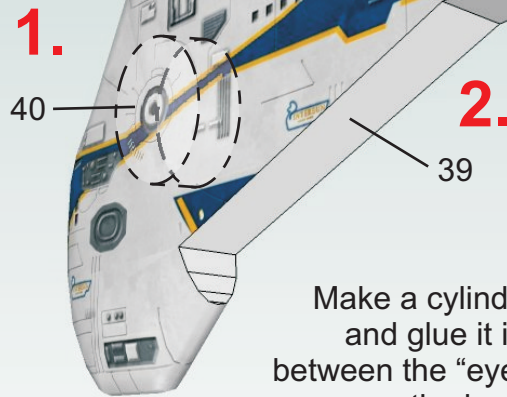
## General tip:

It is highly recommended to cut off all flaps on curved parts and to glue these parts from behind with paper strips. So you will achieve a much more pleasing result.



Use parts 30 - 32 for the left side.

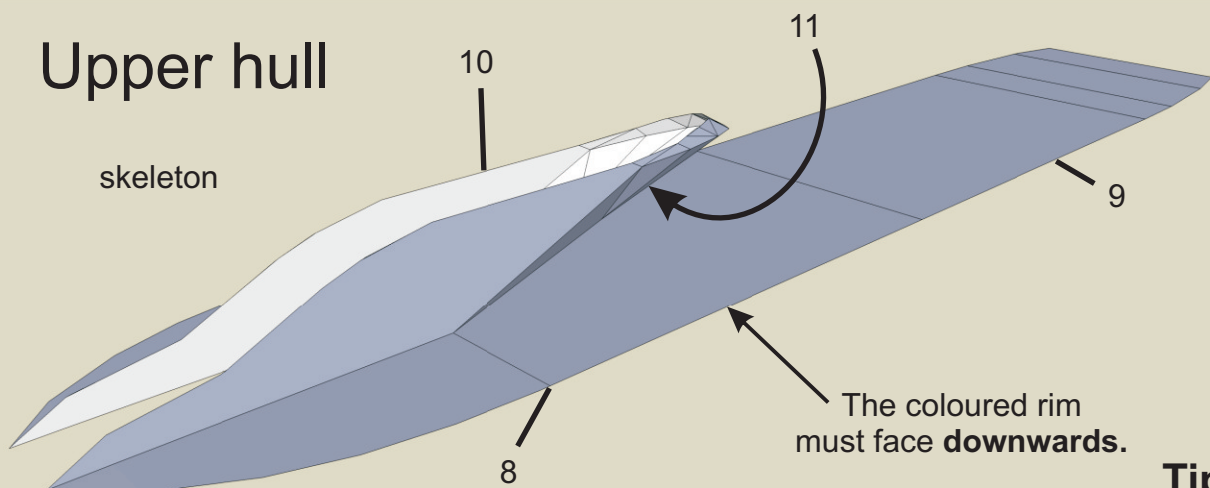
## Head



Make a cylinder from part 40 and glue it inside the head between the "eyes". Then close the head with part 39.

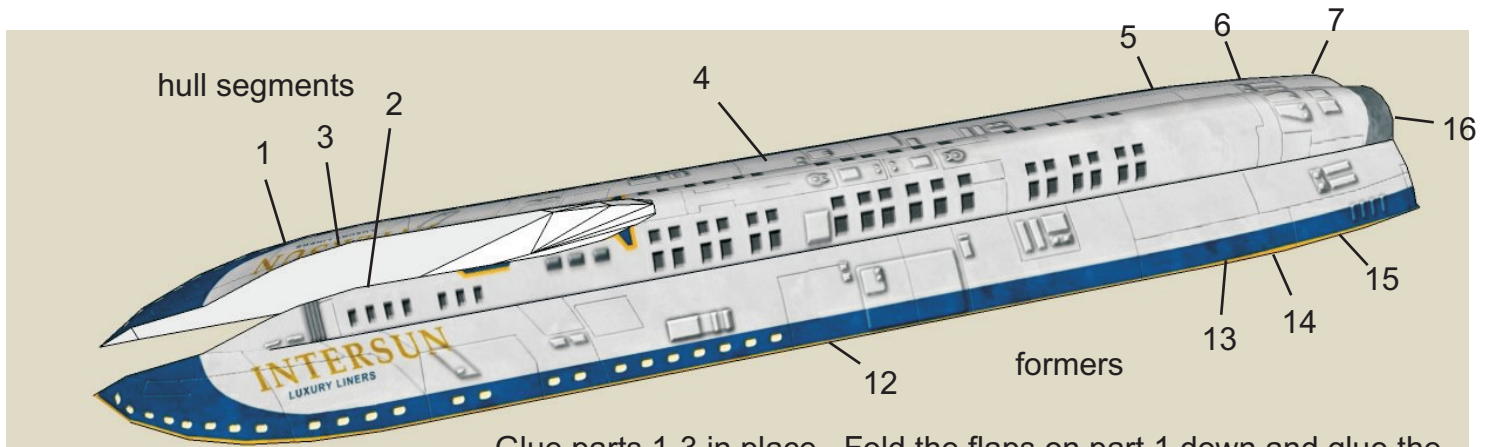
## Upper hull

skeleton

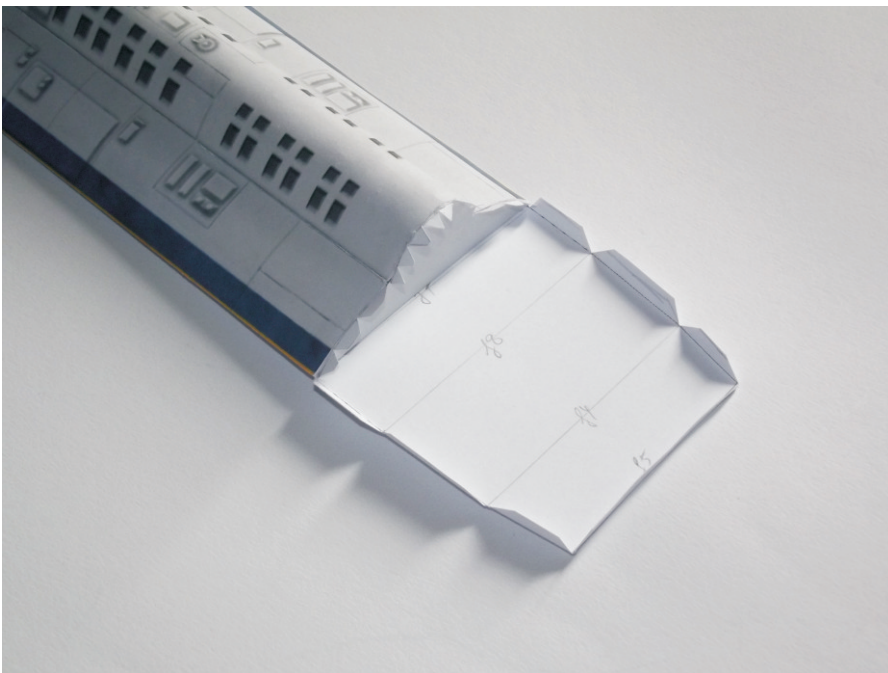


## Tip:

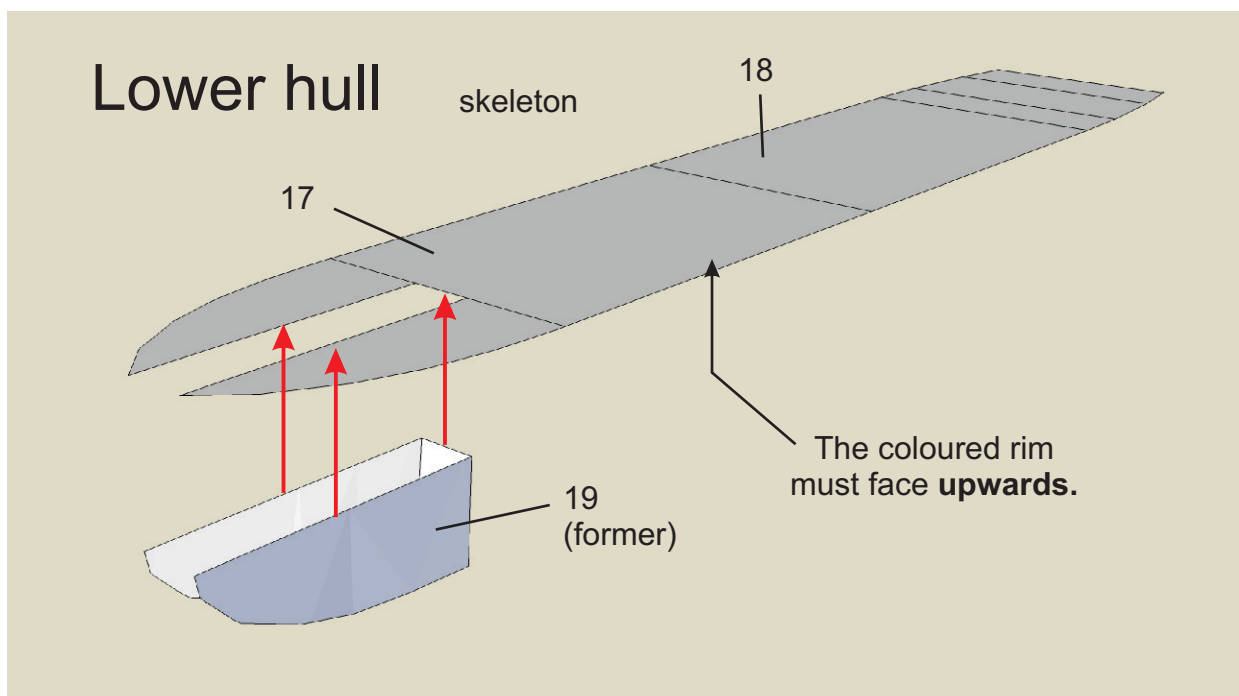
You may glue parts 10 & 11 to parts 1, 2 & 3 first and then glue everything to part 8.



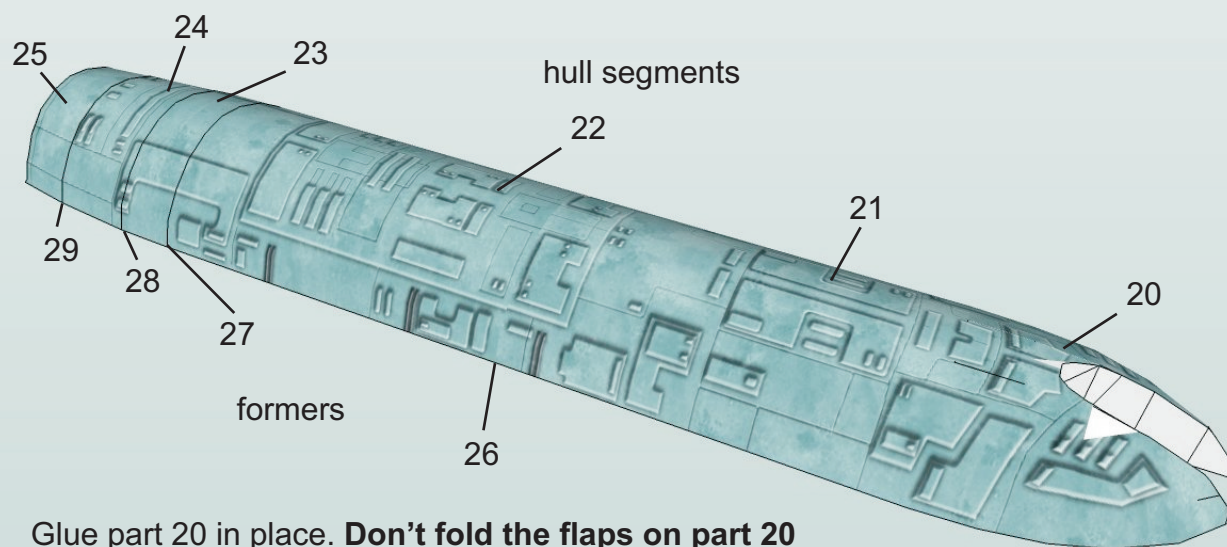
Glue parts 1-3 in place. Fold the flaps on part 1 down and glue the former part 12 in place. Use the flaps on former 12 to attach part 4. Proceed with the next parts accordingly and use the flaps on the hull segments to hold the formers in place and the flaps on the formers to hold the next hull segment in place.



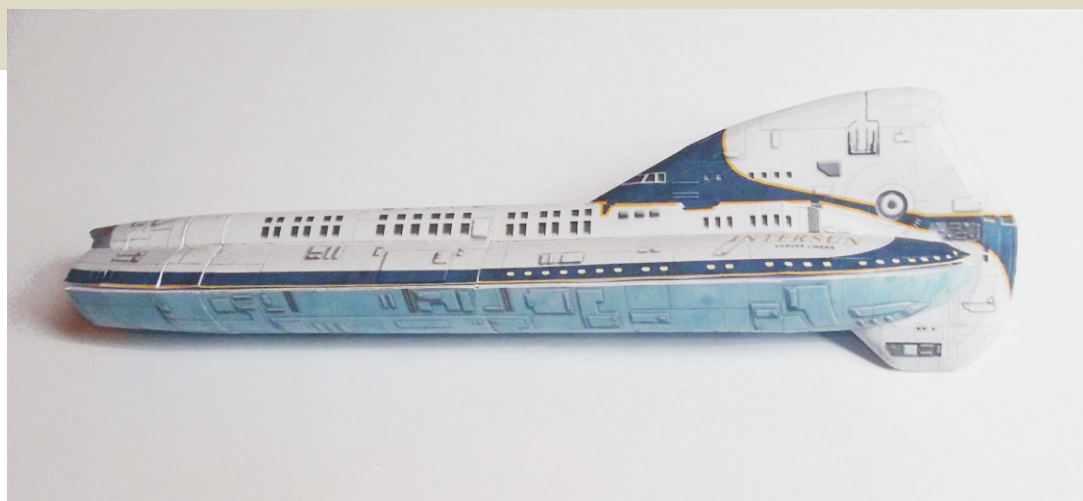
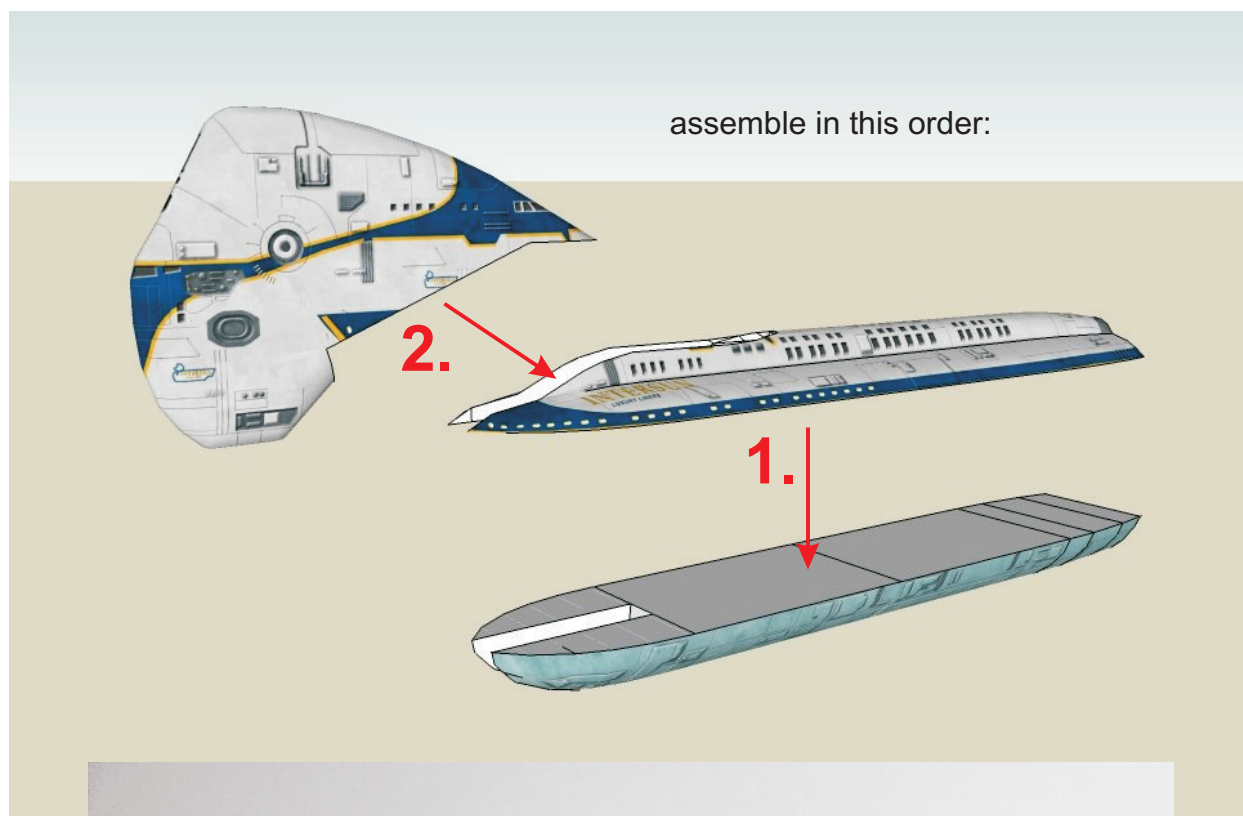
Please note that this procedure is not the only way. You may choose to assemble all hull segments first, glue the formers to the base and then attach the completed hull. You may also switch the position of the flaps on the parts according to your needs.



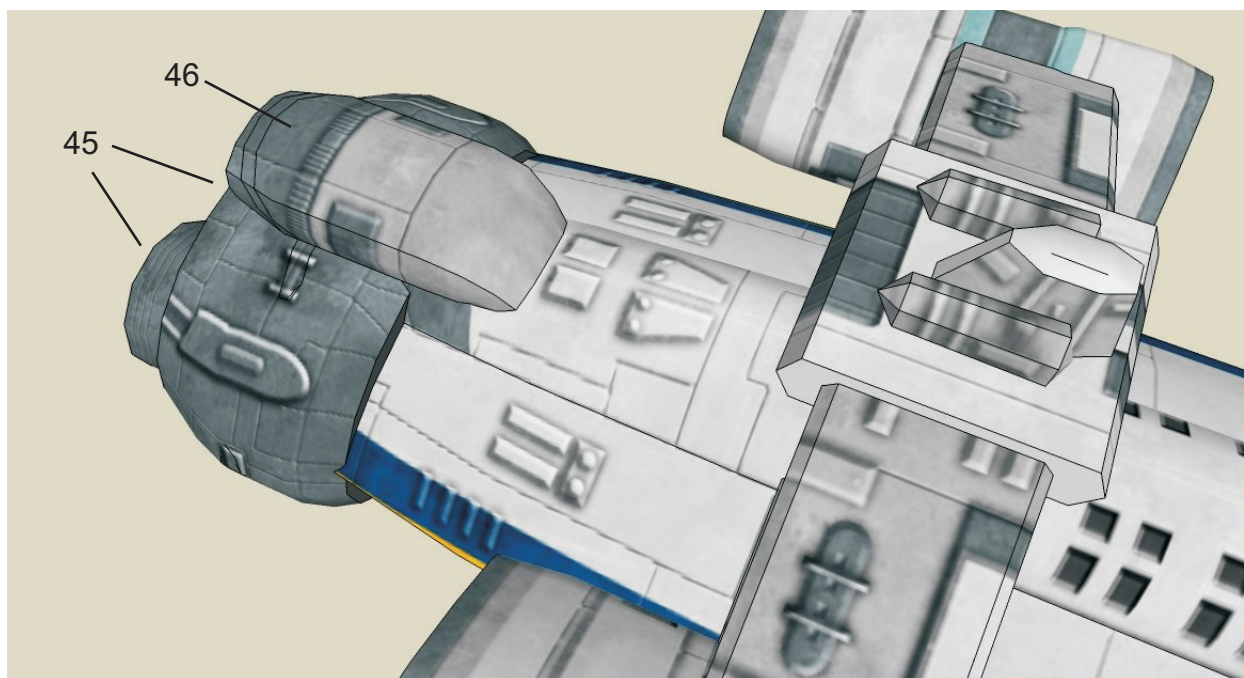
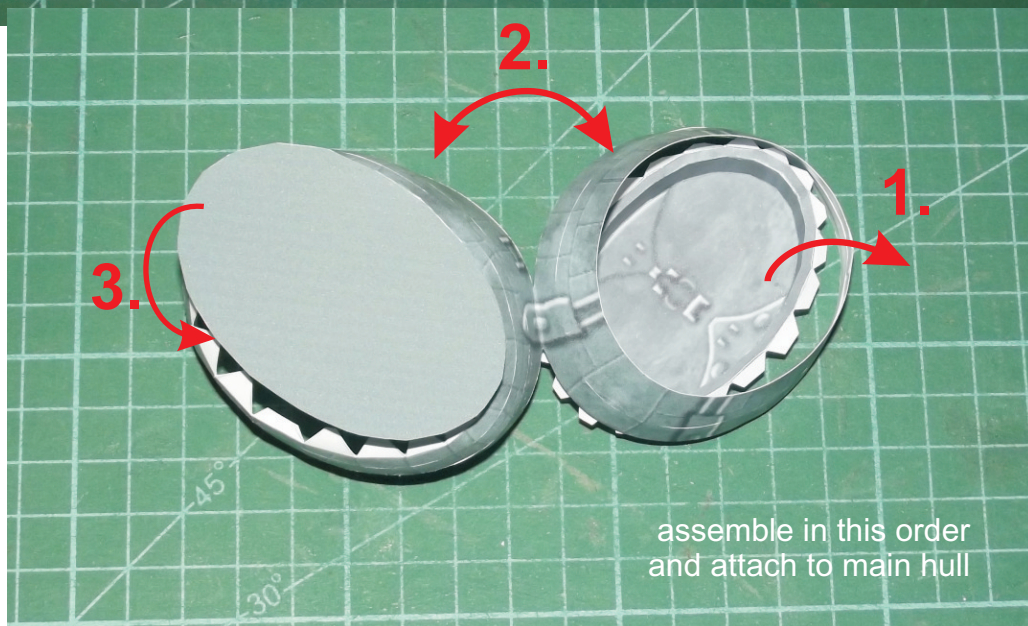
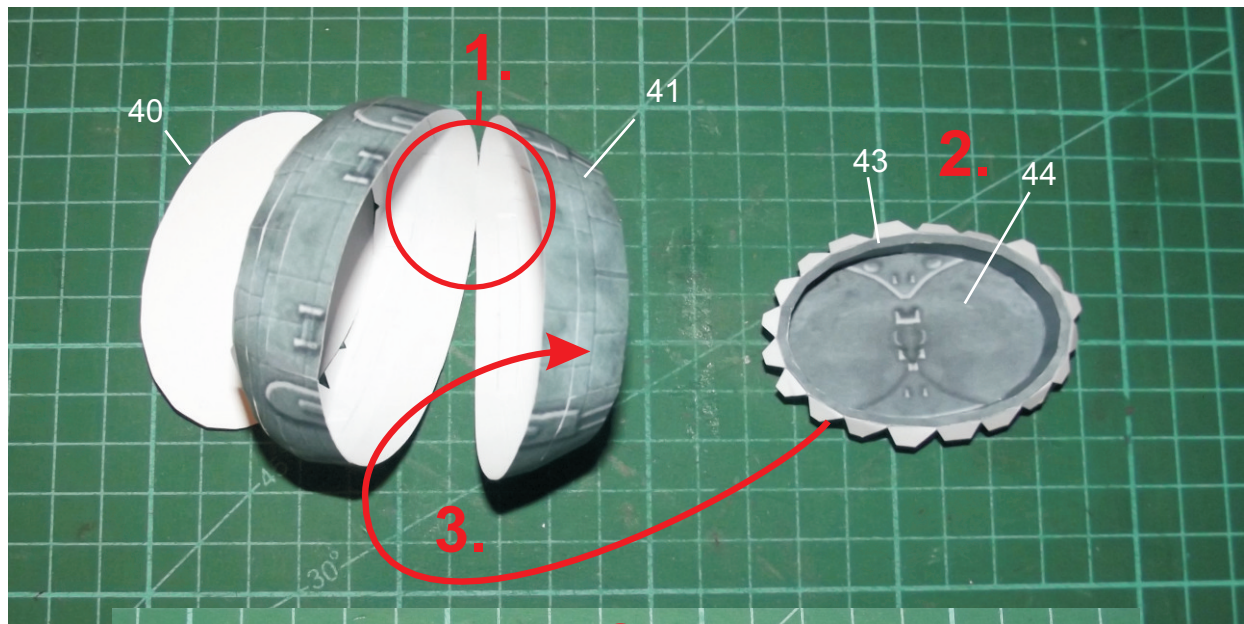




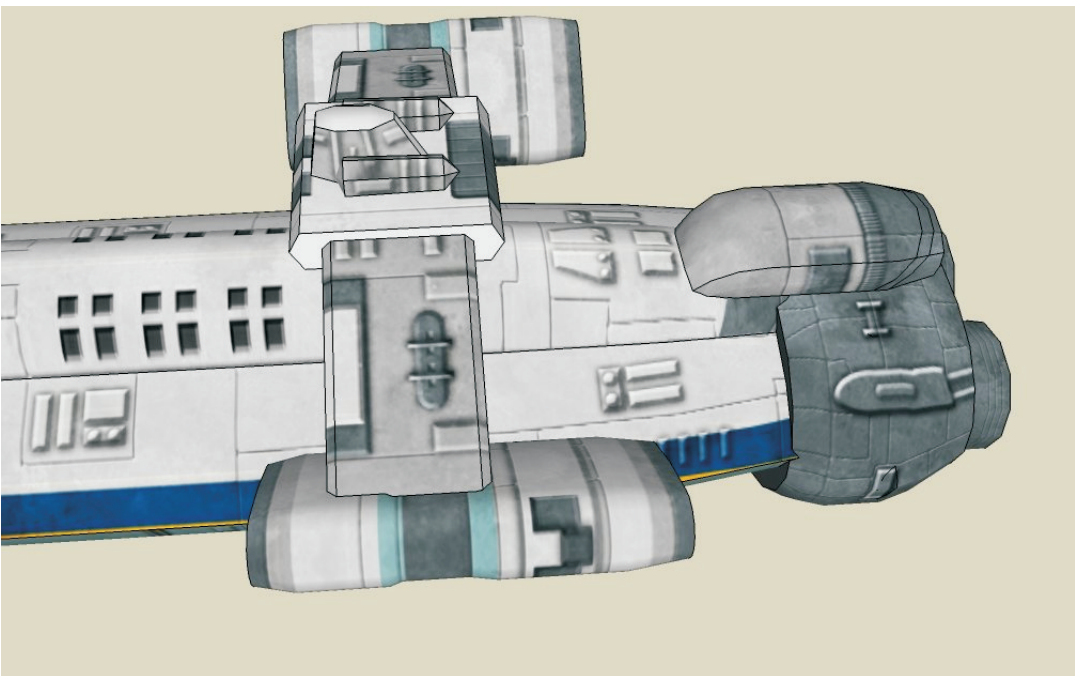
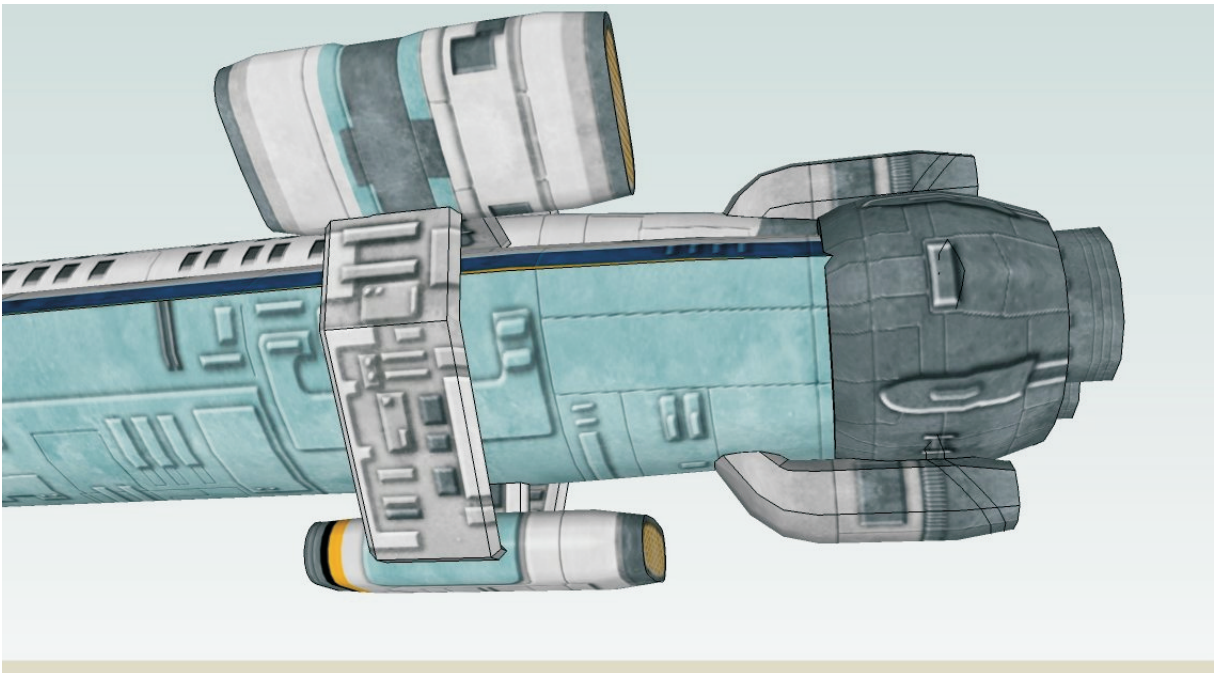
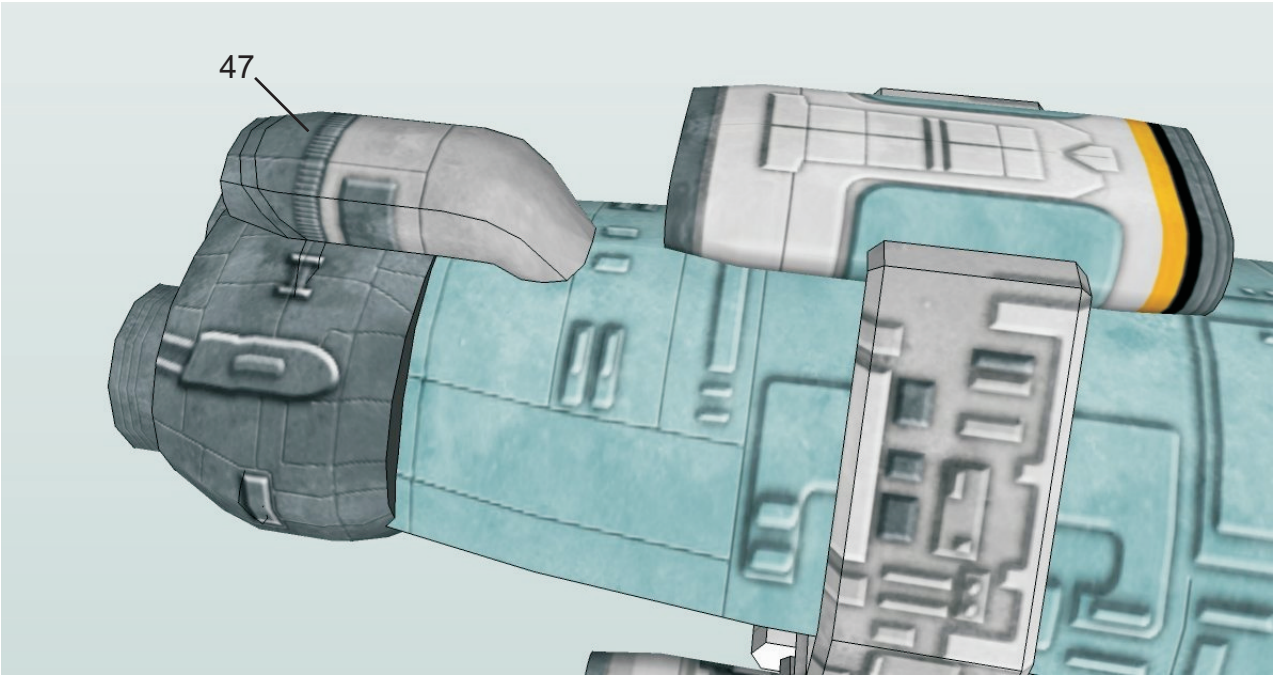
Glue part 20 in place. **Don't fold the flaps on part 20** and glue part 21 in place. Fold the flaps on part 21 down and glue the former part 26 in place. Use the flaps on former 26 to attach part 22. Proceed with the next parts accordingly and use the flaps on the hull segments to hold the formers in place and the flaps on the formers to hold the next hull segment in place.



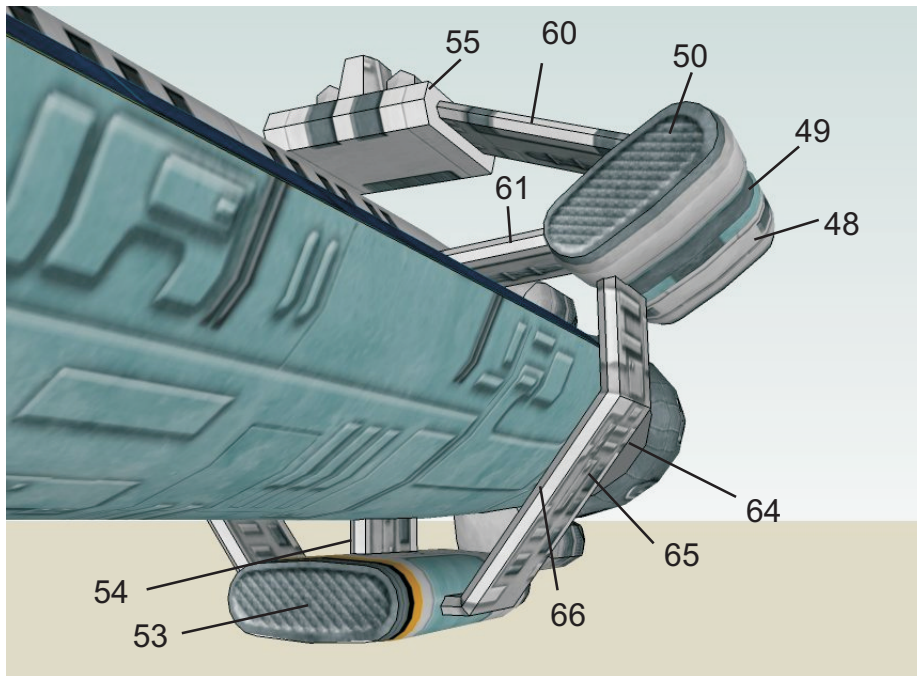
# Engine











## The ring

Assembly of the ring is very tricky. Take your time and use the images as a guide.

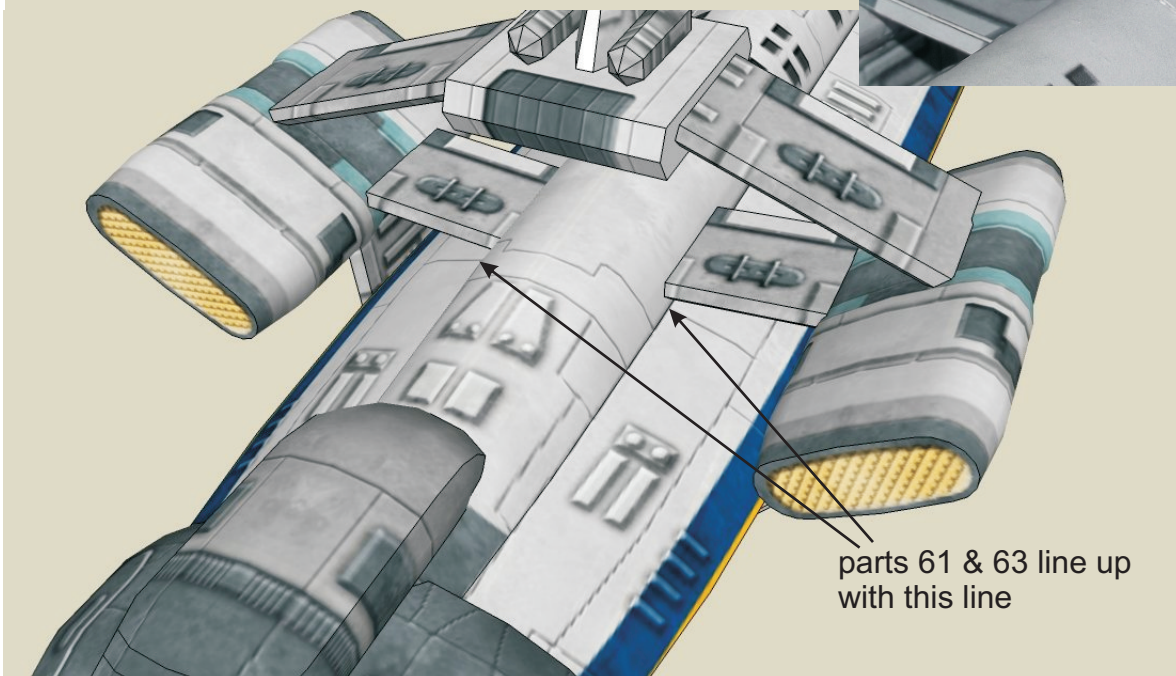
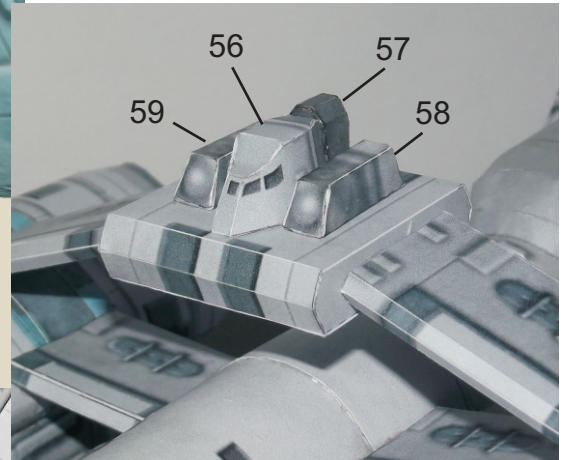
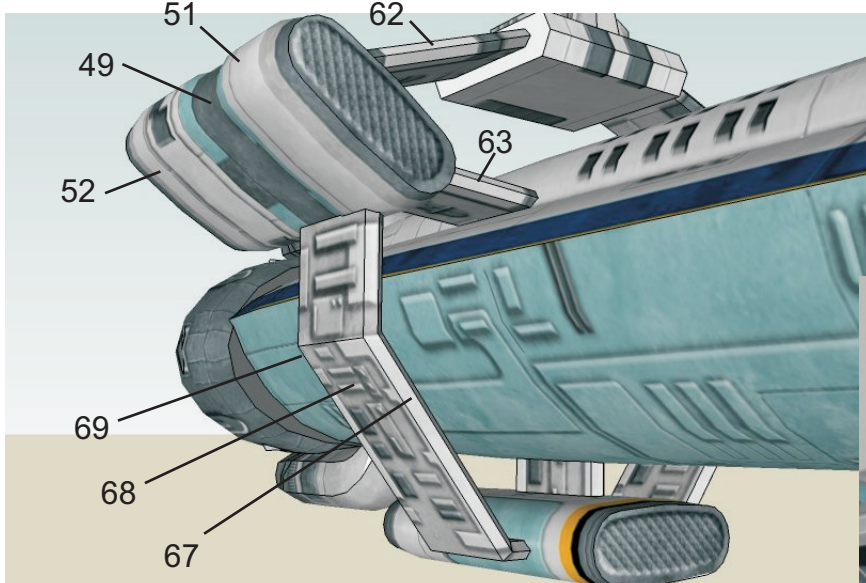
Assemble all individual parts first. Then attach the parts in this order:

56, 57, 58 & 59 - 55  
 60 - 55  
 62 - 55  
 54 - 53  
 (64 - 65 - 66) - 53  
 (67 - 68 - 69) - 53  
 61, 63 & 54 to main hull

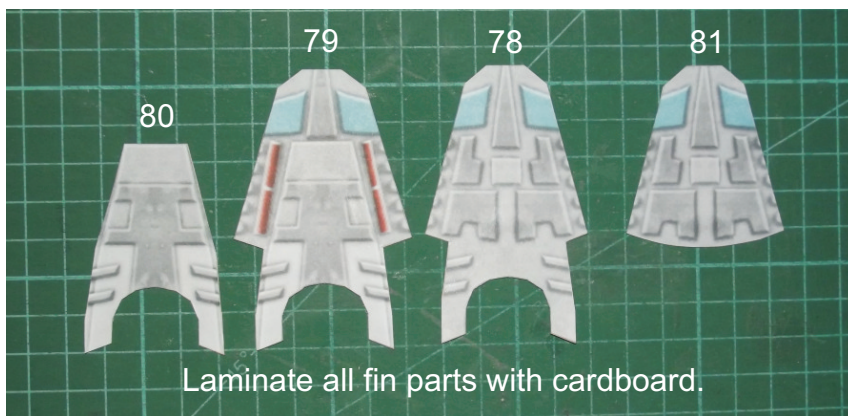
(48 - 49 - 50) - 61 -  
 (64 - 65 - 66)

(51 - 49 - 52) - 63 -  
 (67 - 68 - 69)

62 & 60 - (51 - 49 - 52)  
 & (48 - 49 - 50)

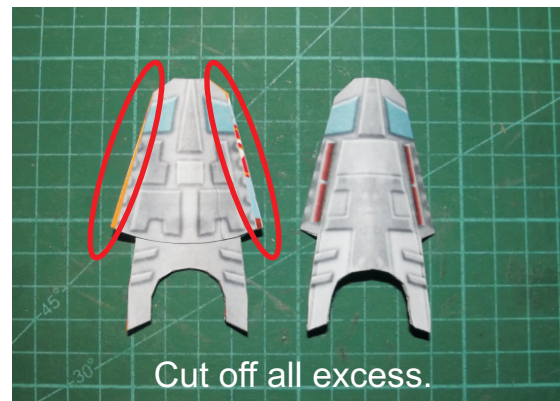
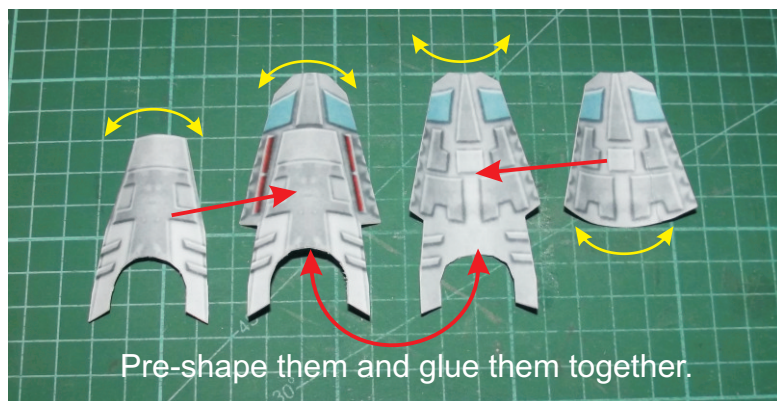




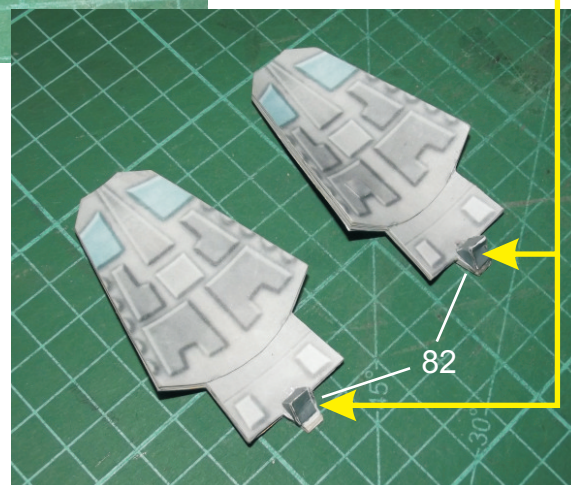
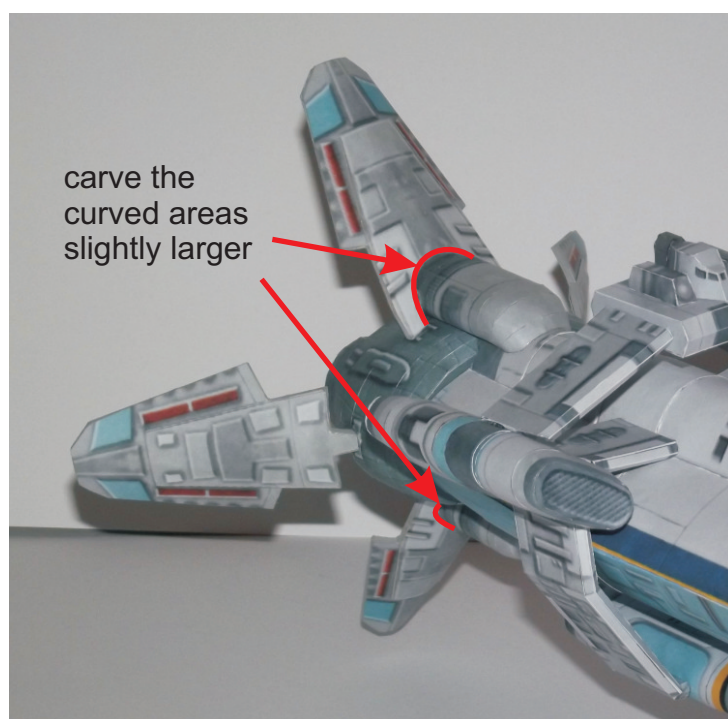


## Fins

Parts 78 - 81 make the top and bottom fins, parts 74 - 77 make the side fins.



Attach part 82 to the side fins and make a notch with your thumbnail.

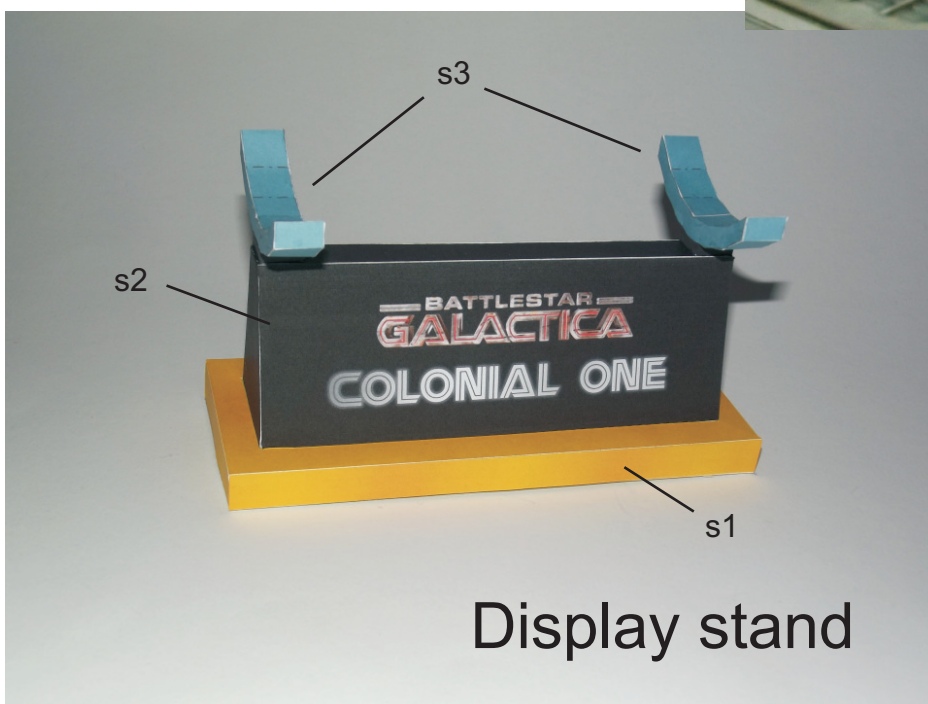
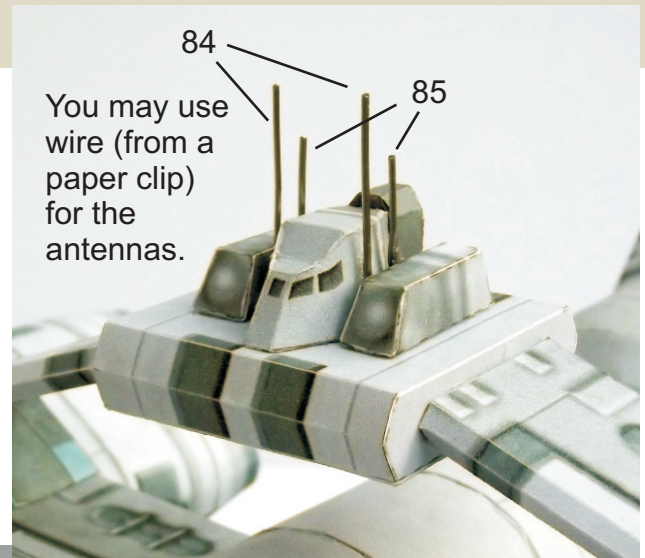
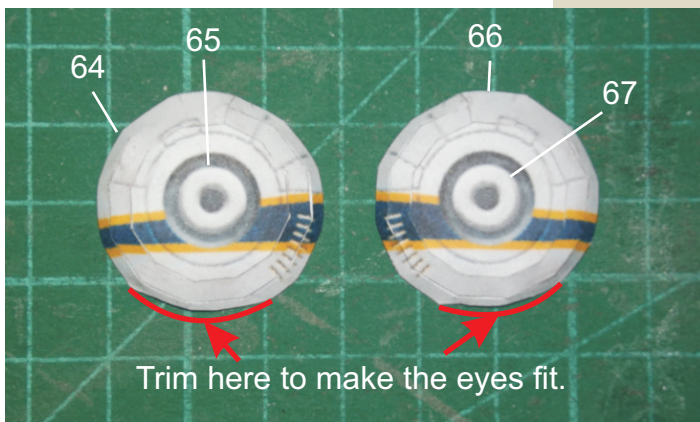
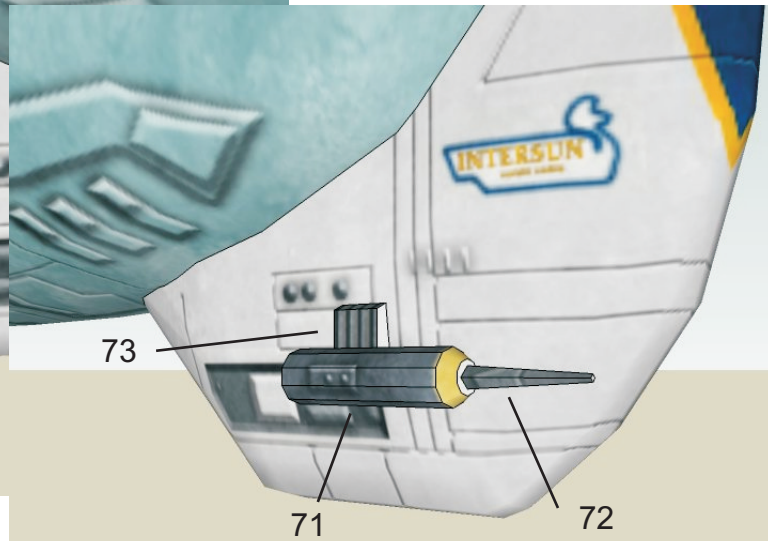
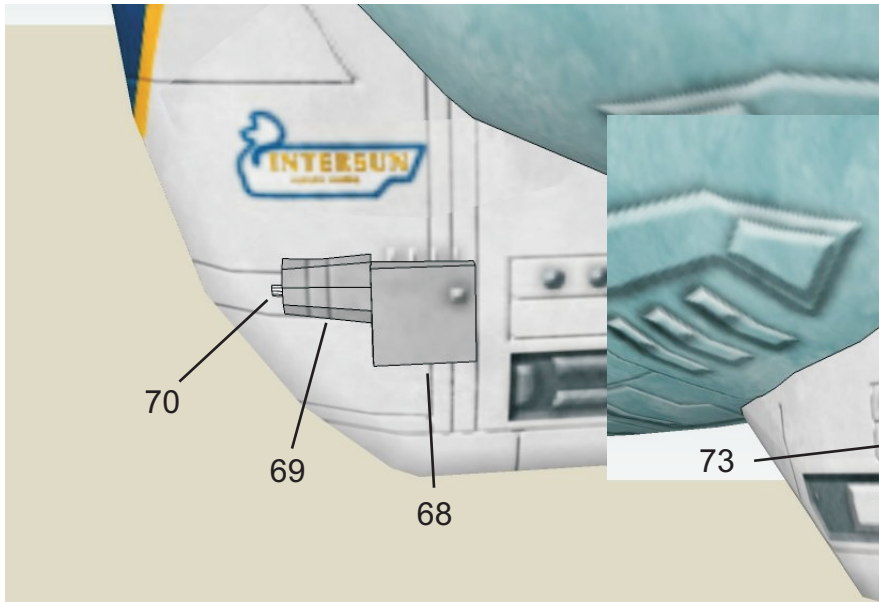


Attach the fins to the engine. Use a sharp knife to carve the top and bottom fins to shape so that they easily slide over parts 46 & 47.



# Greeblies

Attach all greeblies at last to prevent them from being ripped off by accident.



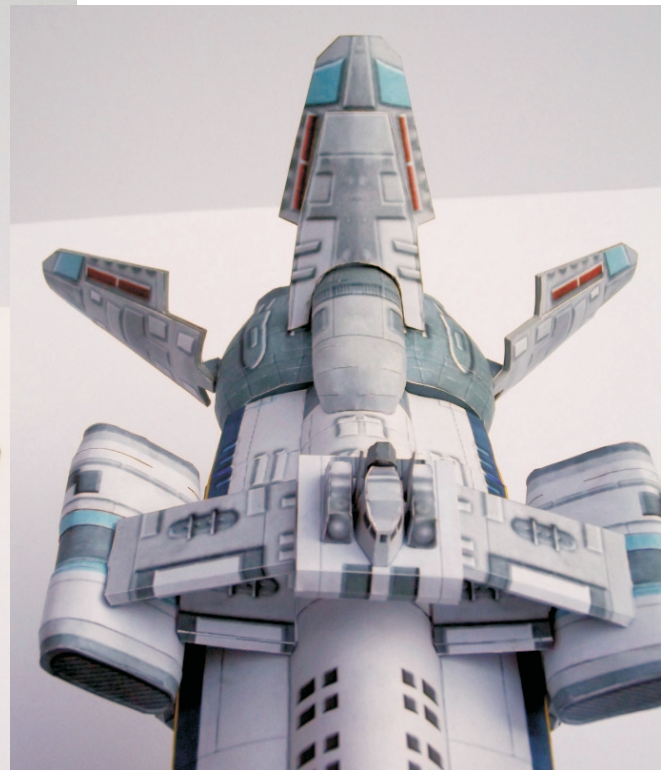
The display stand has two sides: The "INTERSUN" campaign side represents the time before the destruction of the colonies, the black BSG side stands for the time after the destruction.

Display stand









**Optional:**

83

Colonial One  
Office of the  
President  
version



(ZOIC variant that has never  
been seen on screen)