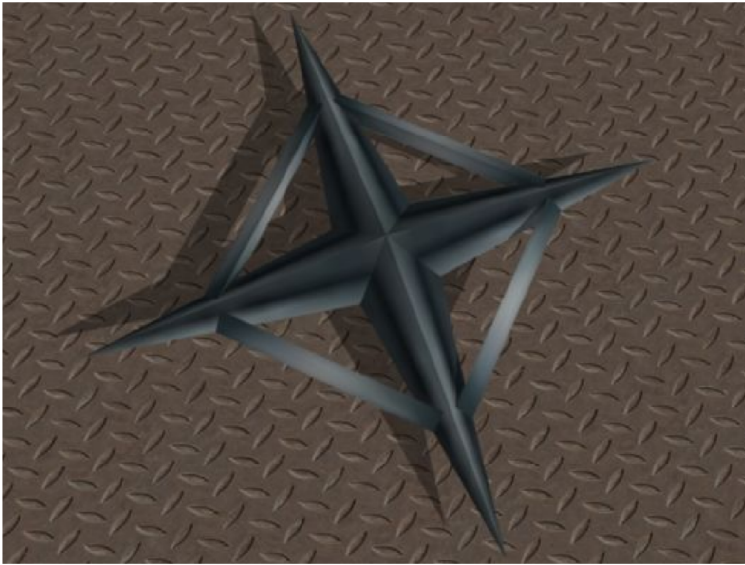


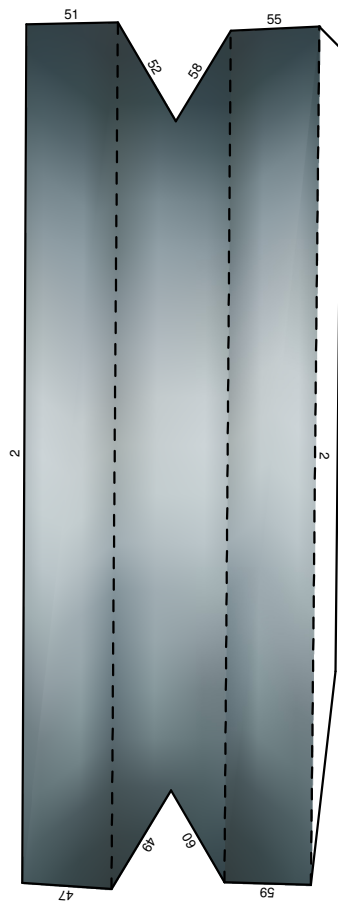
HIROGEN SHURIKEN

AS SEEN IN THE VIDEO GAME
STAR TREK VOYAGER ELITE FORCE
1:1 SCALE

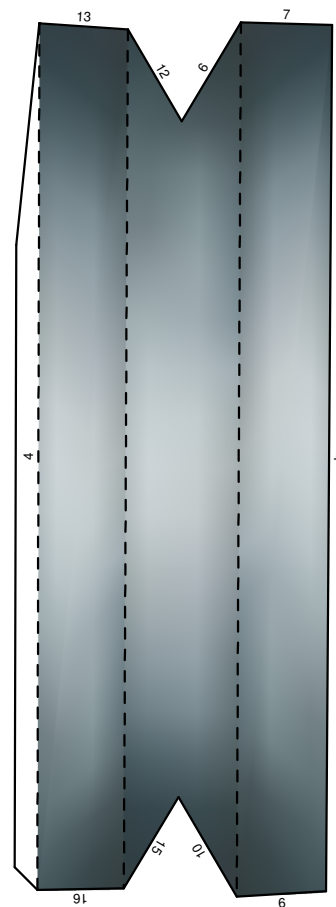


INSTRUCTIONS:

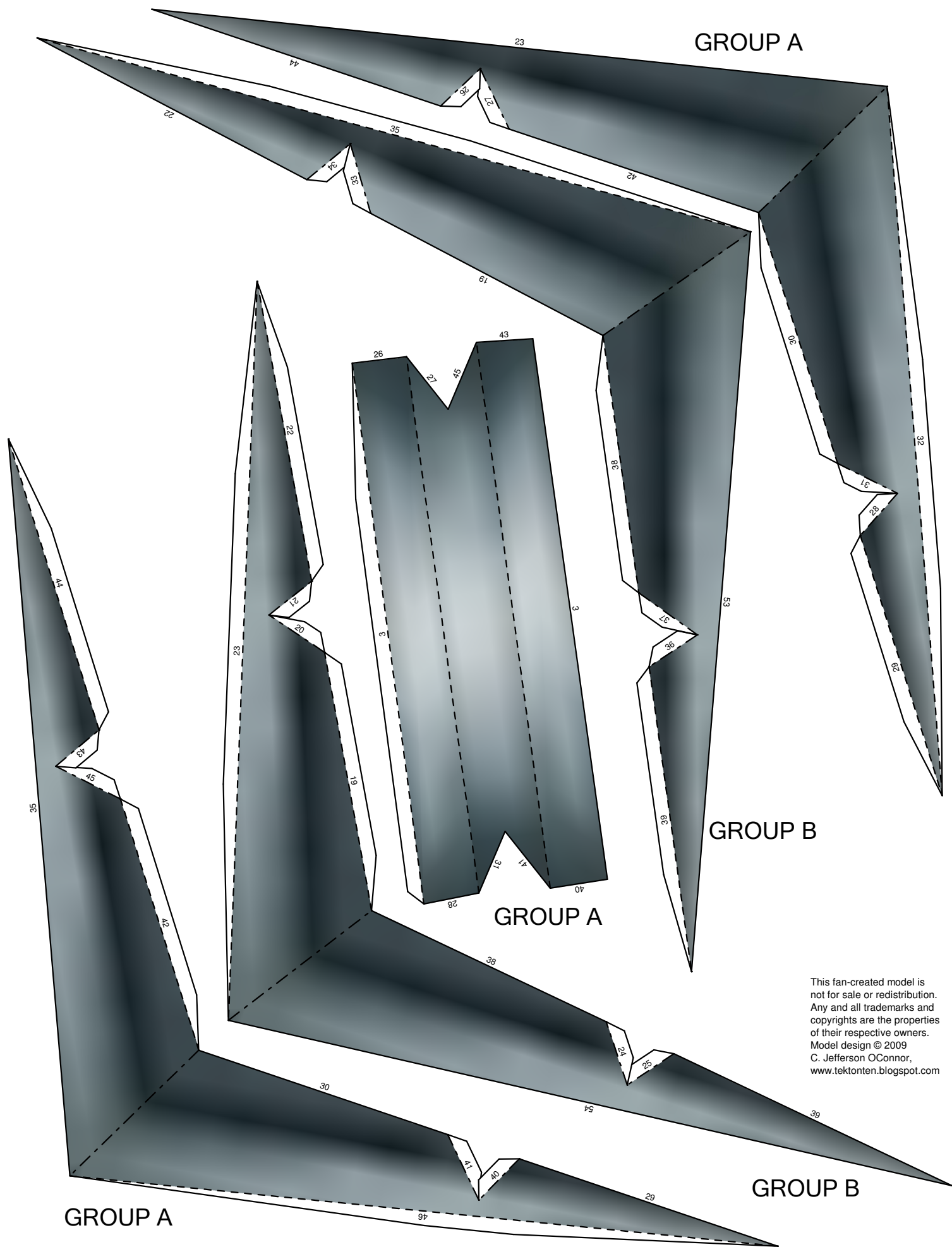
1. Print the template on cardstock.
2. Make a mountain fold on the dashed lines.
3. Make a valley fold on the dash dot lines.
4. Assemble as indicated by the numbers.
5. Glue sparingly at the flaps.
6. Assemble groups A, B, C and D (3 parts each) then glue the four completed groups to each other.



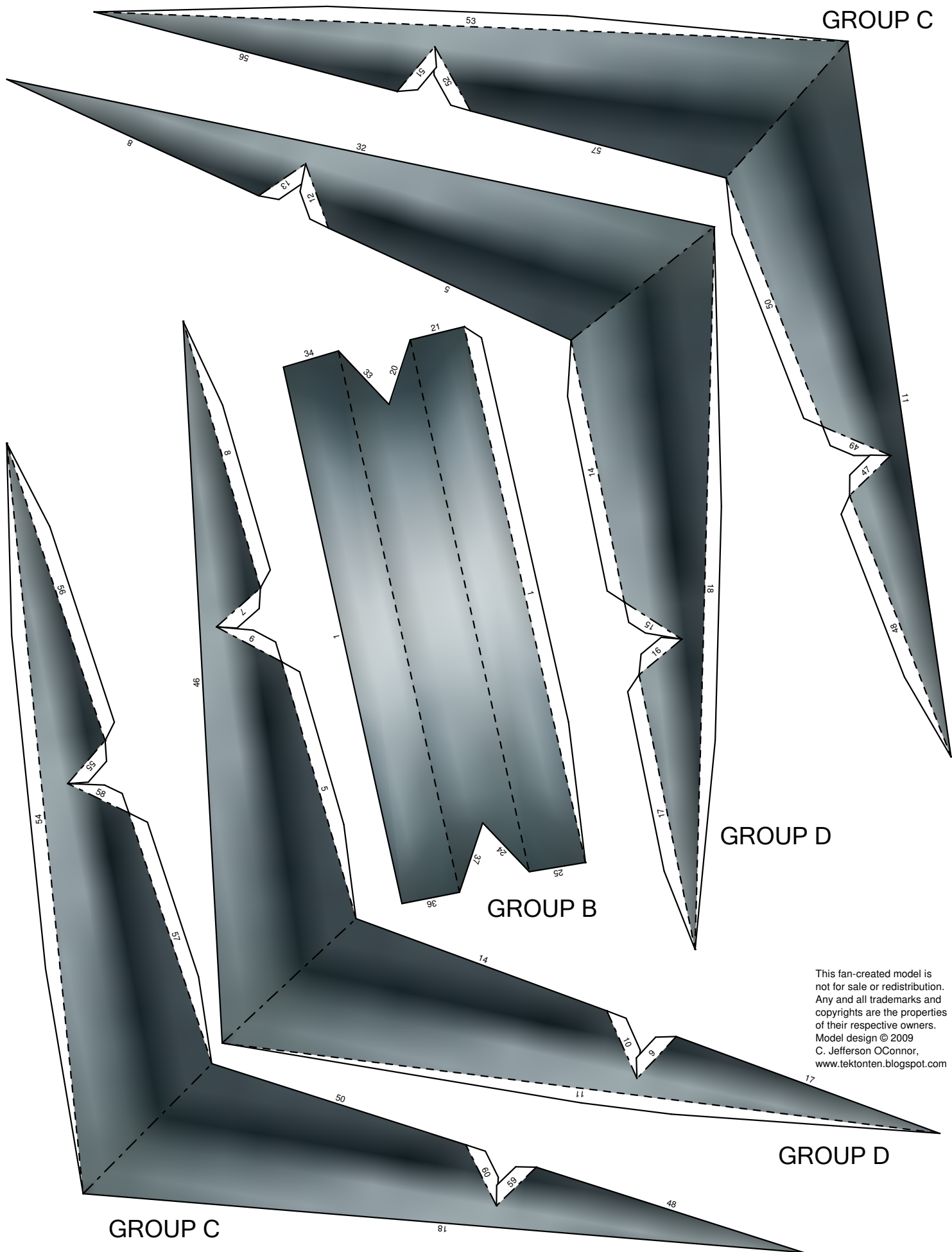
GROUP C



GROUP D



This fan-created model is not for sale or redistribution. Any and all trademarks and copyrights are the properties of their respective owners. Model design © 2009 C. Jefferson OConnor, www.tektonen.blogspot.com



GROUP C

GROUP D

GROUP B

GROUP D

GROUP C

This fan-created model is not for sale or redistribution. Any and all trademarks and copyrights are the properties of their respective owners. Model design © 2009 C. Jefferson OConnor, www.tektonten.blogspot.com