

1.

A
B
C
D
E
F
G
H
I
J
K
L
M

1 2 3 4 5 6 7 8 9

Laytoes' Challenges Nr.002

Laundromat Layman

Do you think you know where to place the extra washing machine to help Luke slide to the exit over the slippery floor?

Try out your answer by building the paper model launderette!

Pay close attention to the valley and mountain folds and assemble only one piece at a time.

Start with the floor and walls, and then place the washing machines on the dark squares. One will be extra.

Good luck and have fun!

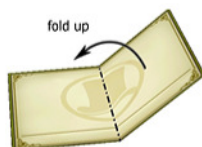
www.tinyurl.com/laytoes



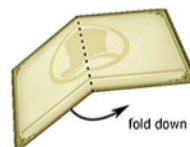
2.

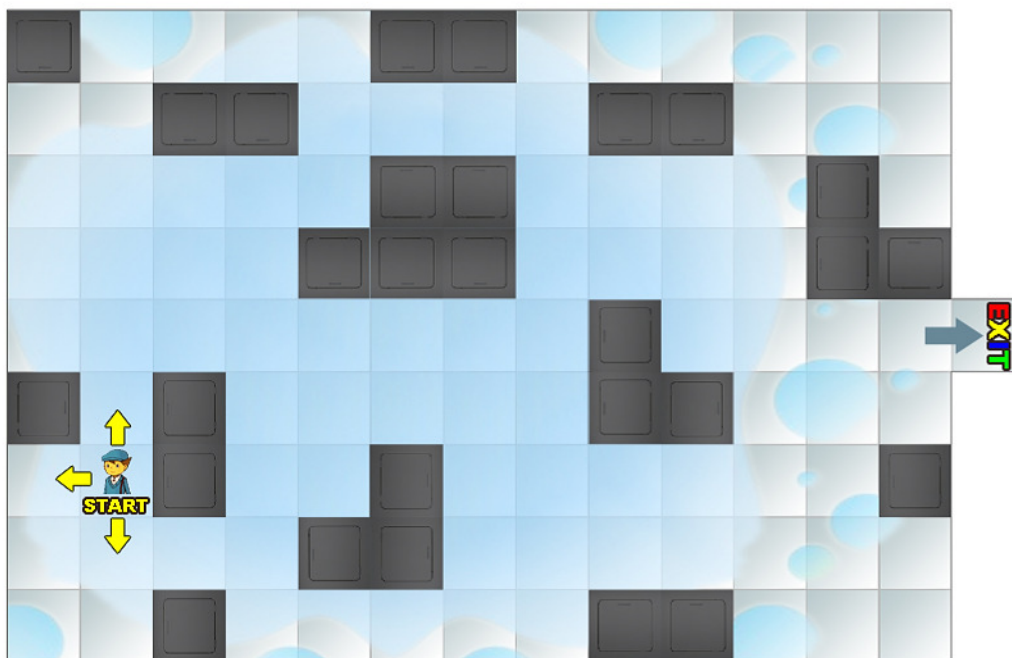
3.

Dash-dotted lines (— · — · —) need to be folded up (this is called a valley fold).

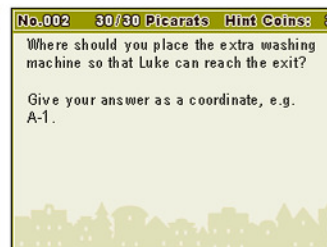
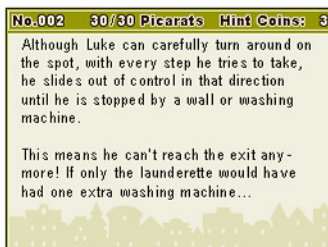
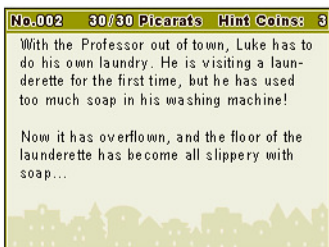
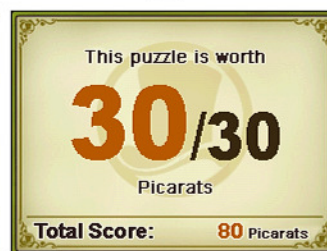
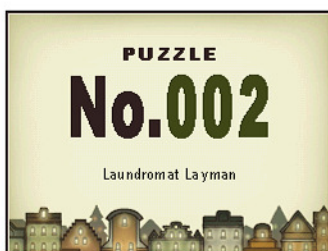


Dashed lines (— — —) need to be folded down (this is called a mountain fold).



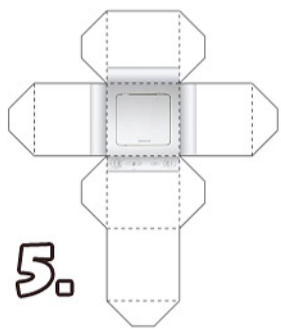


Laytoes' Challenges

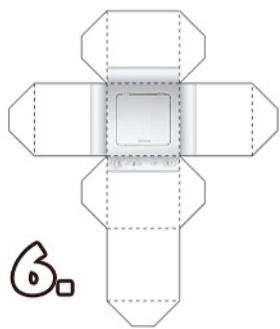


www.kickme.to/ninjatoes

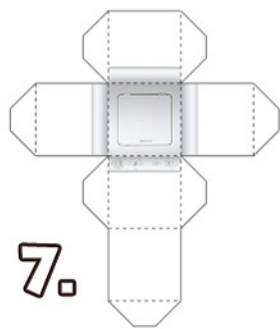
Need some hints? www.tinyurl.com/laytoes



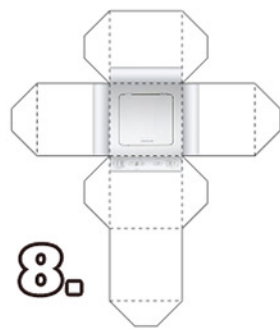
5.



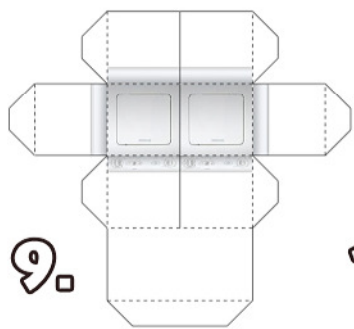
6.



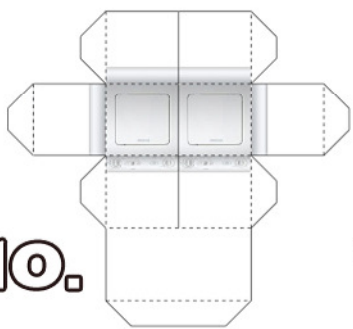
7.



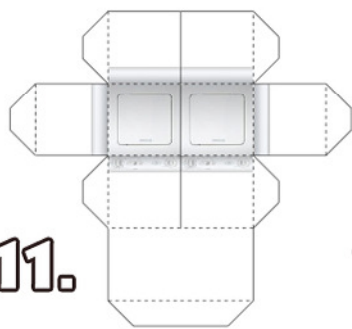
8.



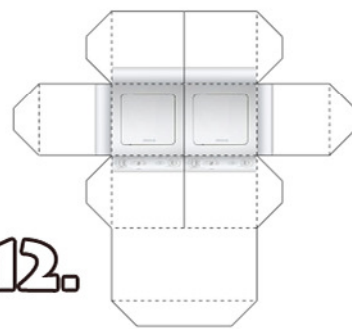
9.



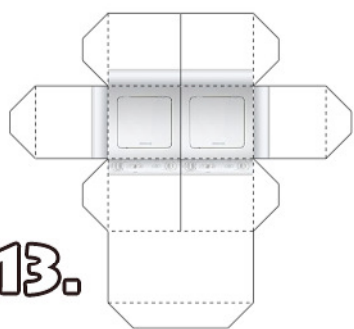
10.



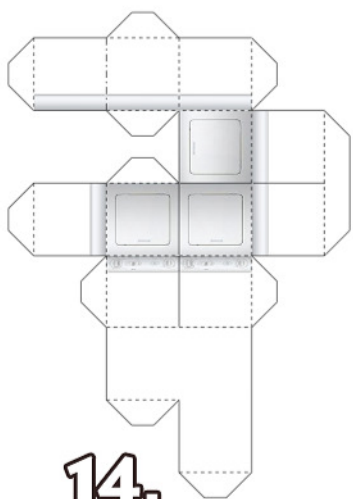
11.



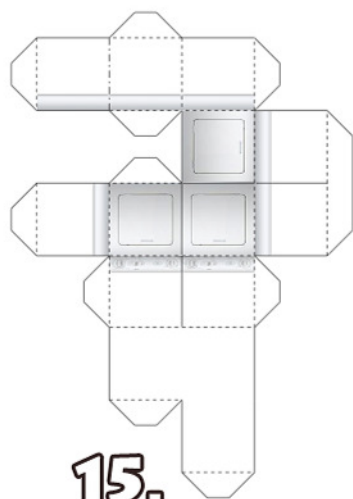
12.



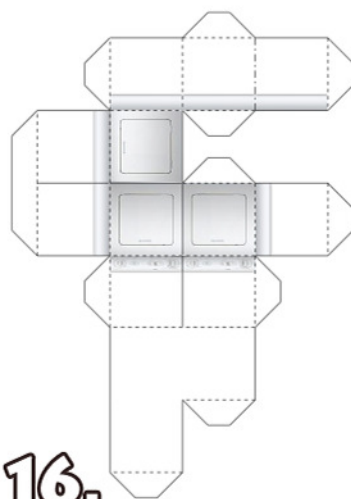
13.



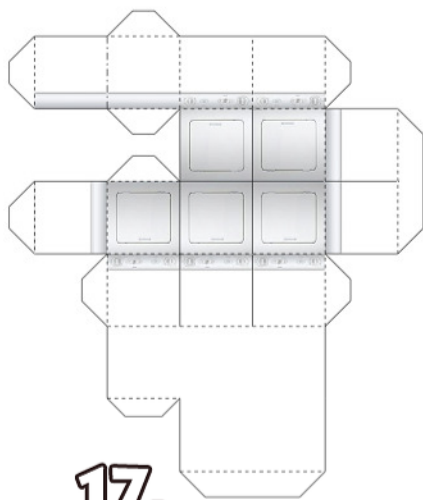
14.



15.



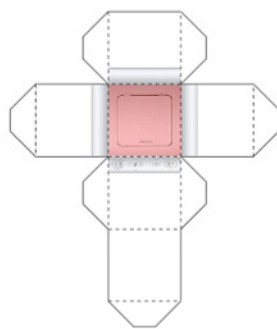
16.



17.



18.



19.