

Laytoes' Challenges Nr.001 The Stackering Tiler

The paper model is not necessary to solve the puzzle, and can be quite difficult to assemble!

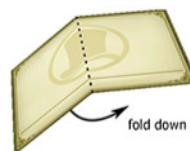
Without any real instructions, just remember it consists of 64 square stacks of different heights, and use the top view of the puzzle as reference.

Pay close attention to the valley and mountain folds and assemble only one piece at a time, glueing them together as you go along.

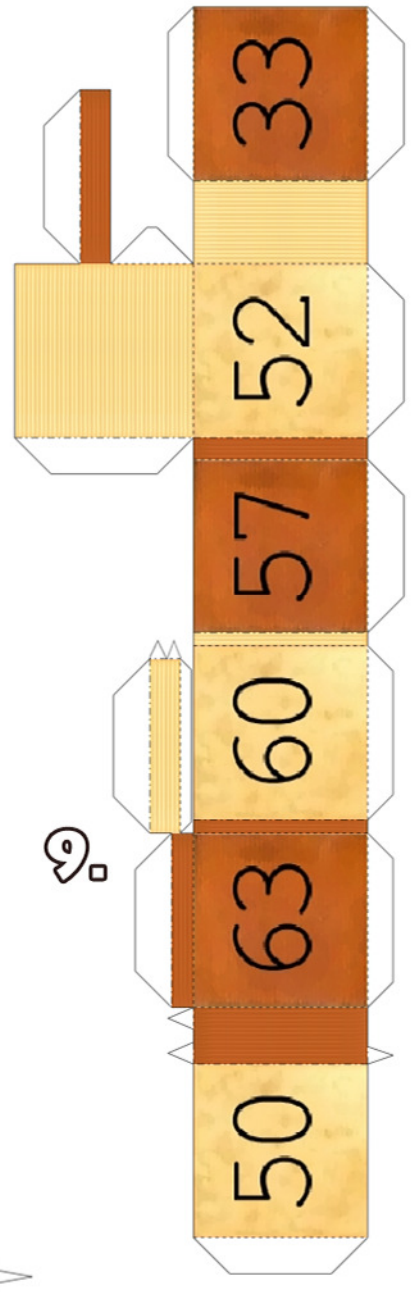
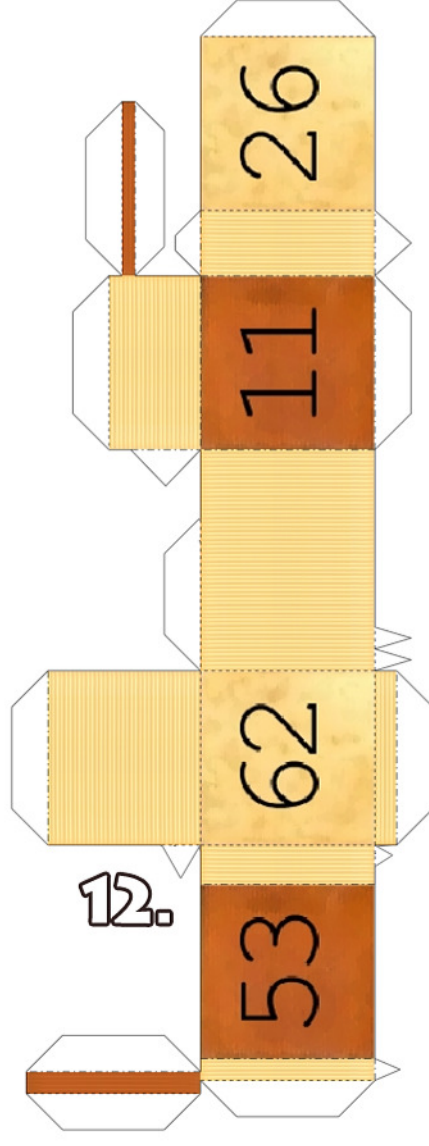
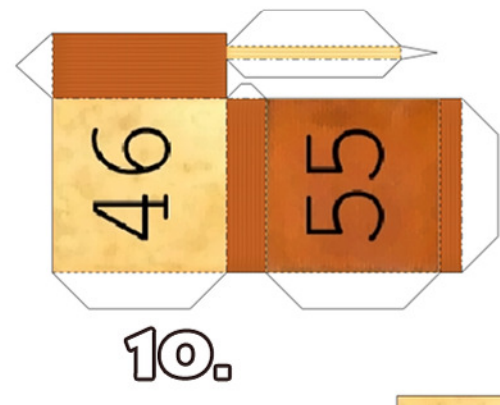
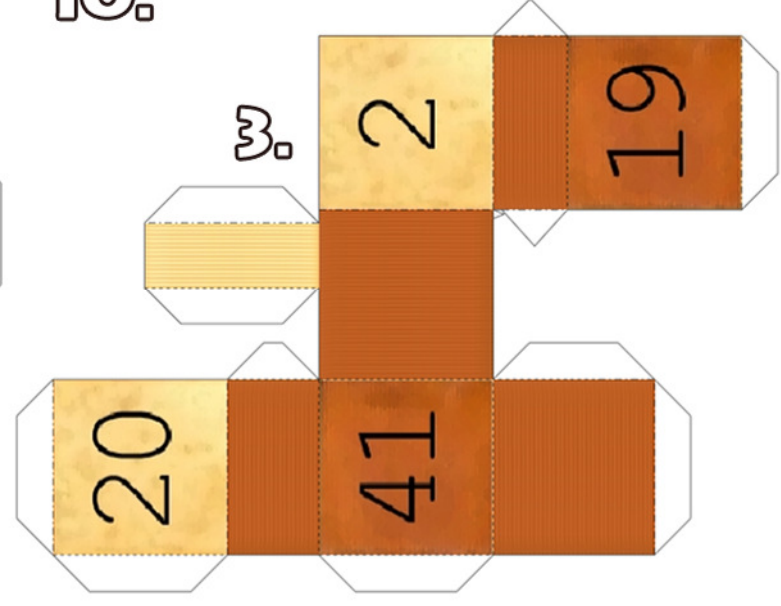
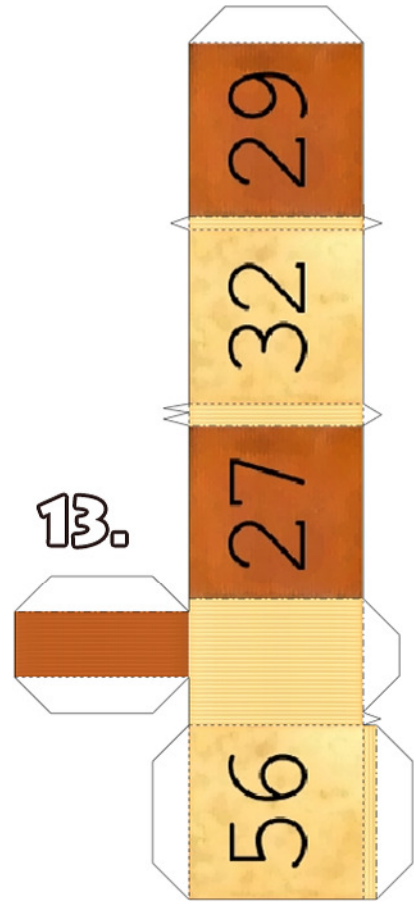
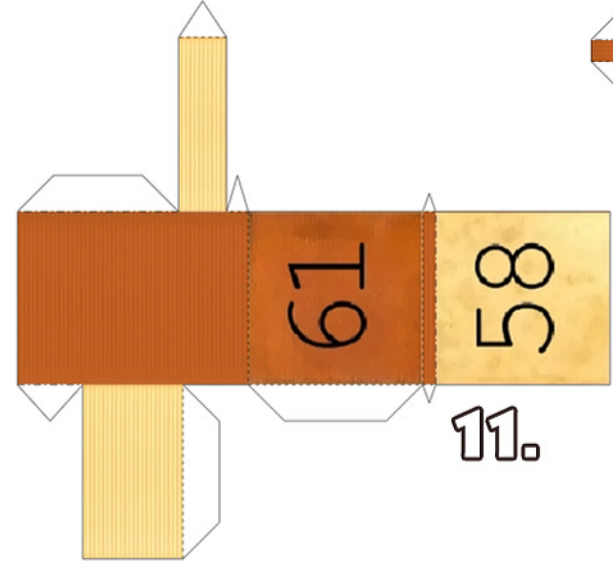
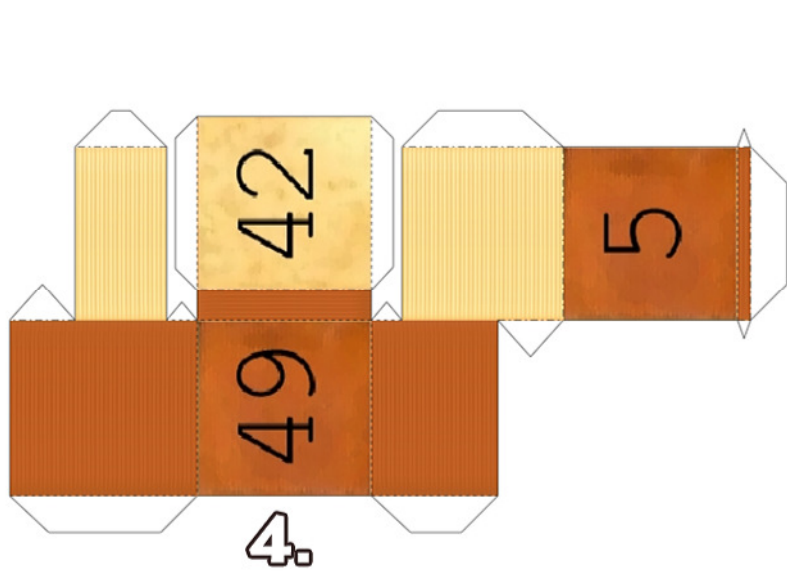
Good luck and have fun!

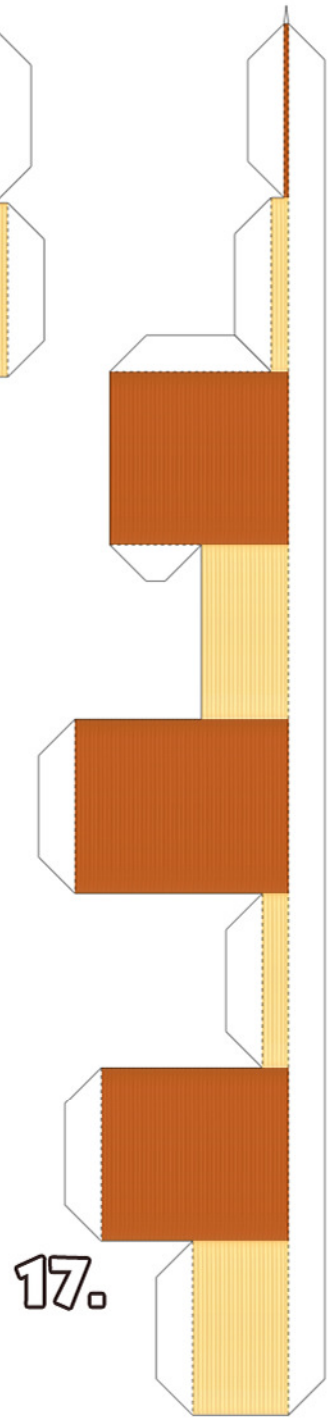
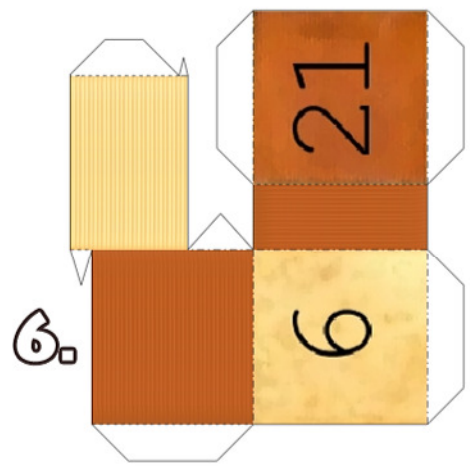
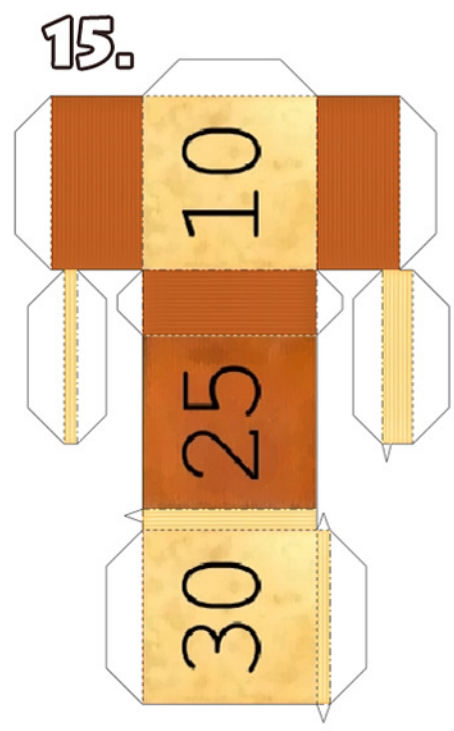
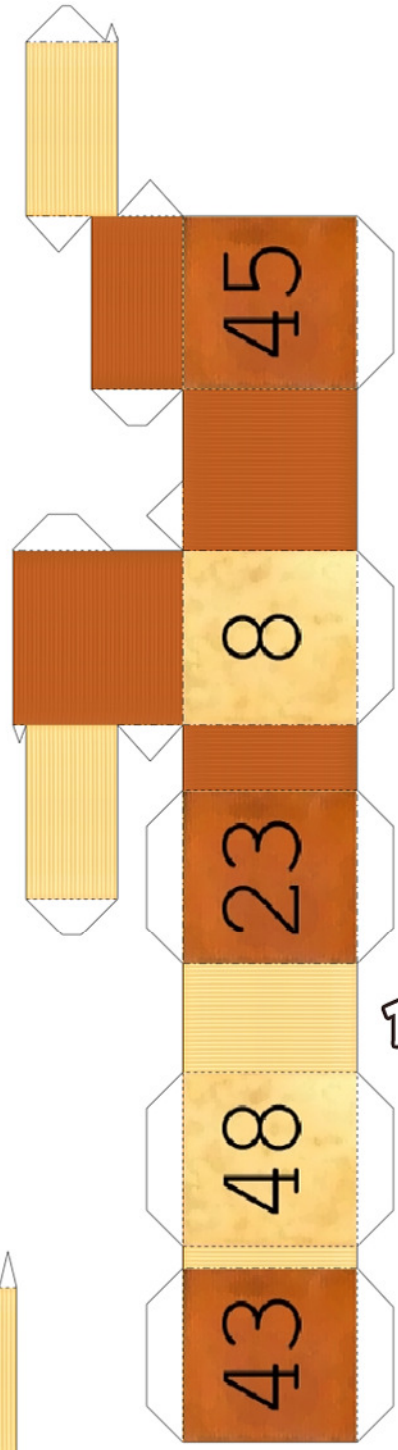
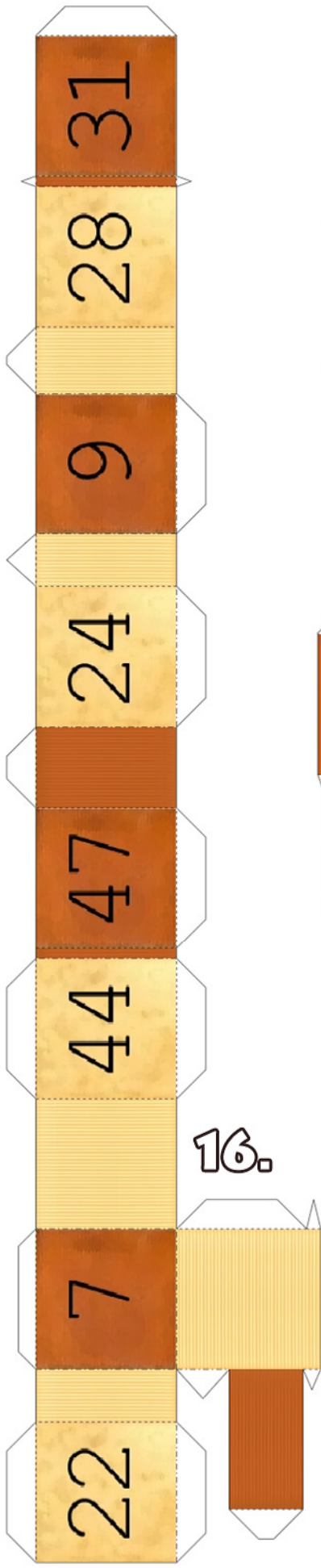


Dashed lines (---) need to be folded down (this is called a mountain fold).



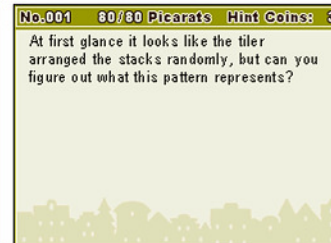
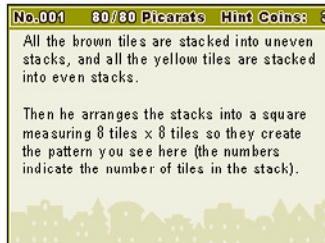
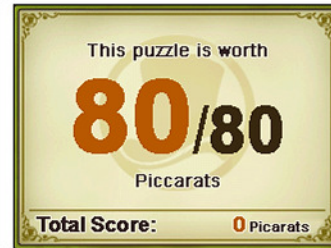
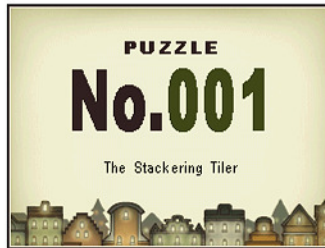
2.





14.

Laytoes' Challenges



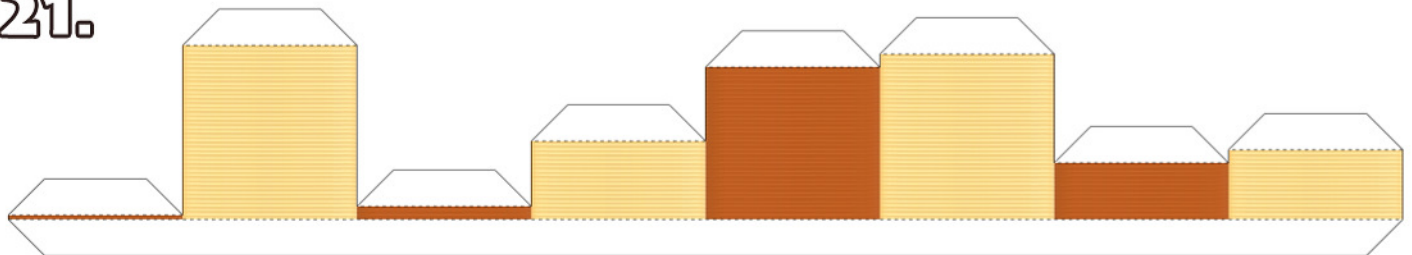
Need some hints?
www.tinyurl.com/laytoes



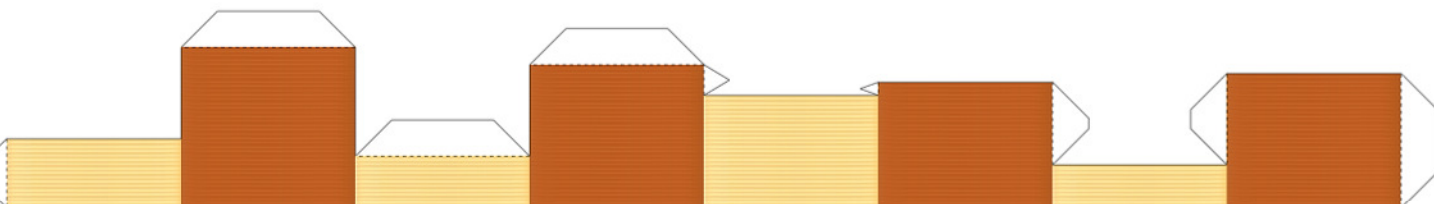
www.kickme.to/ninjatoes



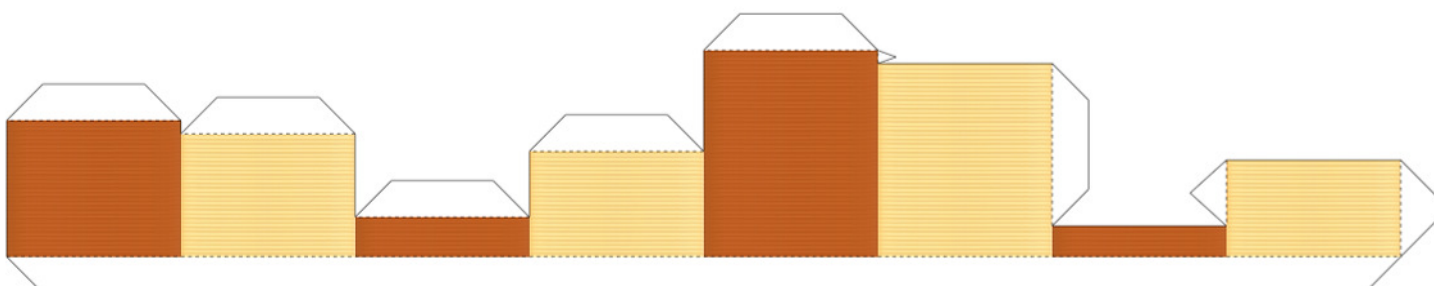
21.



18.



19.



20.

