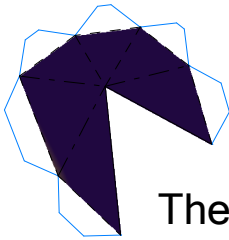
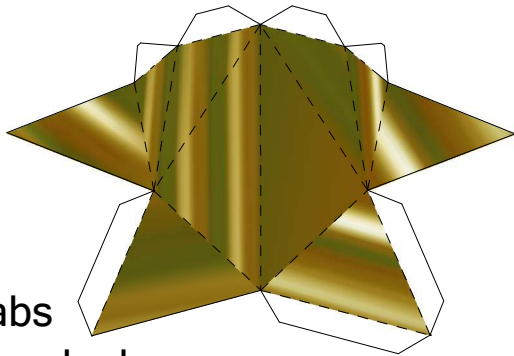


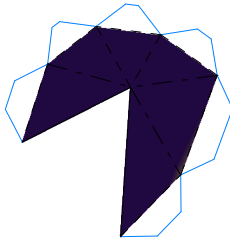
Right Shoulder
Area



Top of Head/Crown



Left Shoulder
Area

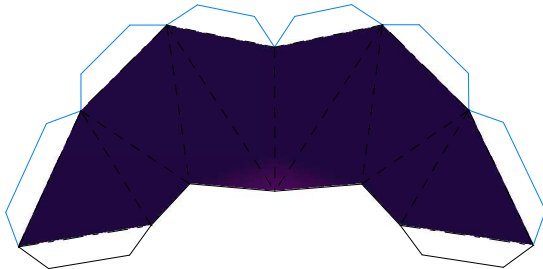


The blue tabs
attach to the cloak.

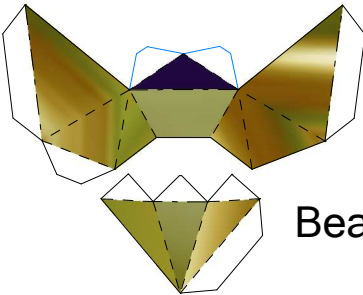
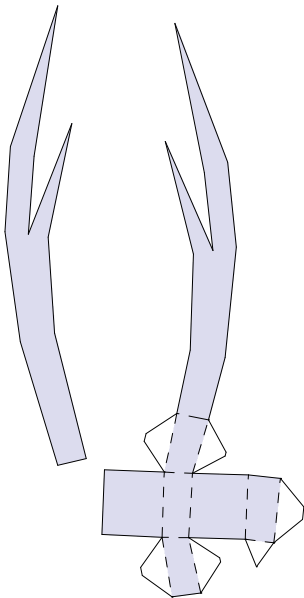
Right Eye



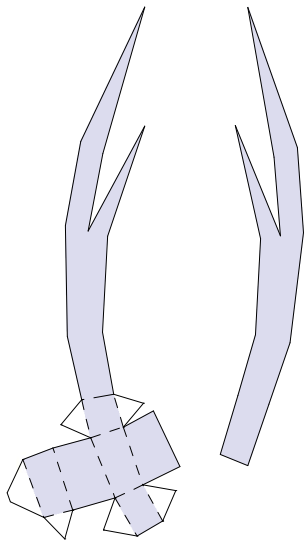
Back of Neck



Left Eye



Beak



These two faces are
glued to the cloak.

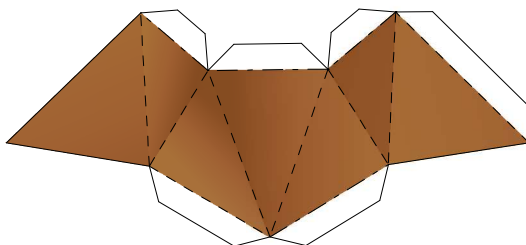
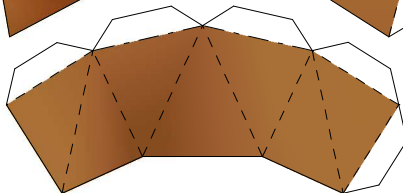
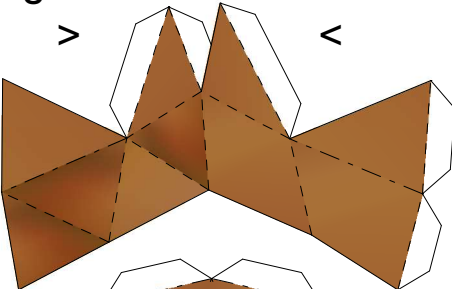
>

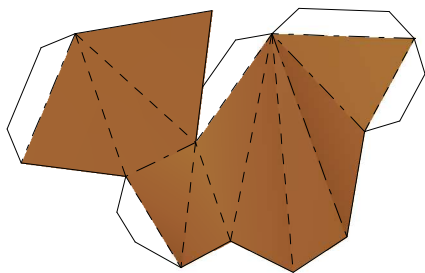
<

Right Sword

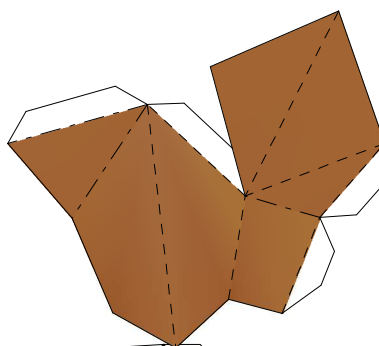
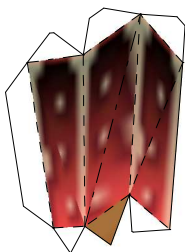
Left Sword

Body

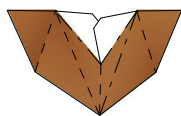
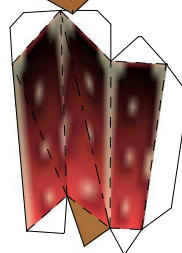




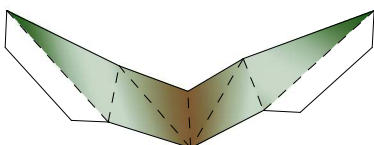
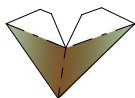
Right Leg



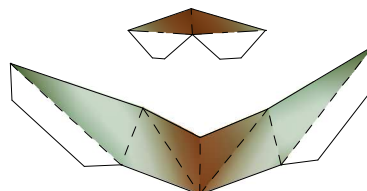
Left Leg



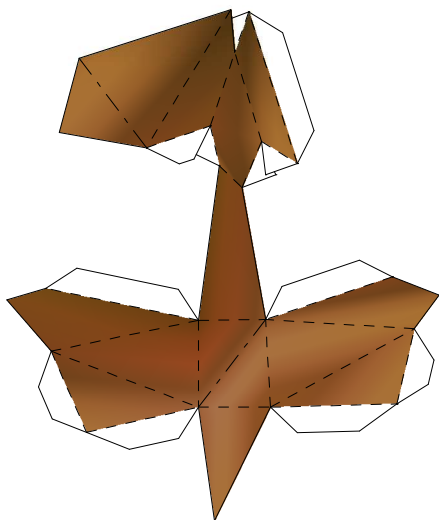
<- These go on after the legs are made ->



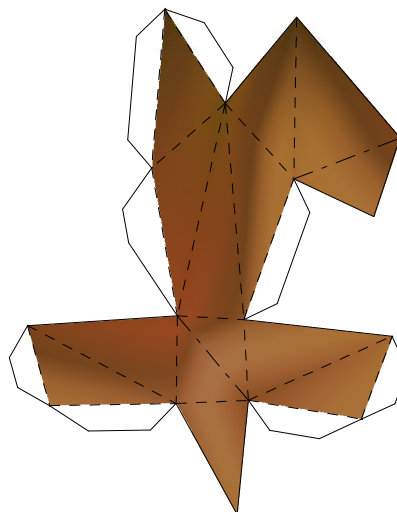
Right Shoe
Cover



Left Shoe
Cover



Right Foot



Left Foot