

Daphnes Nohansen Hyrule



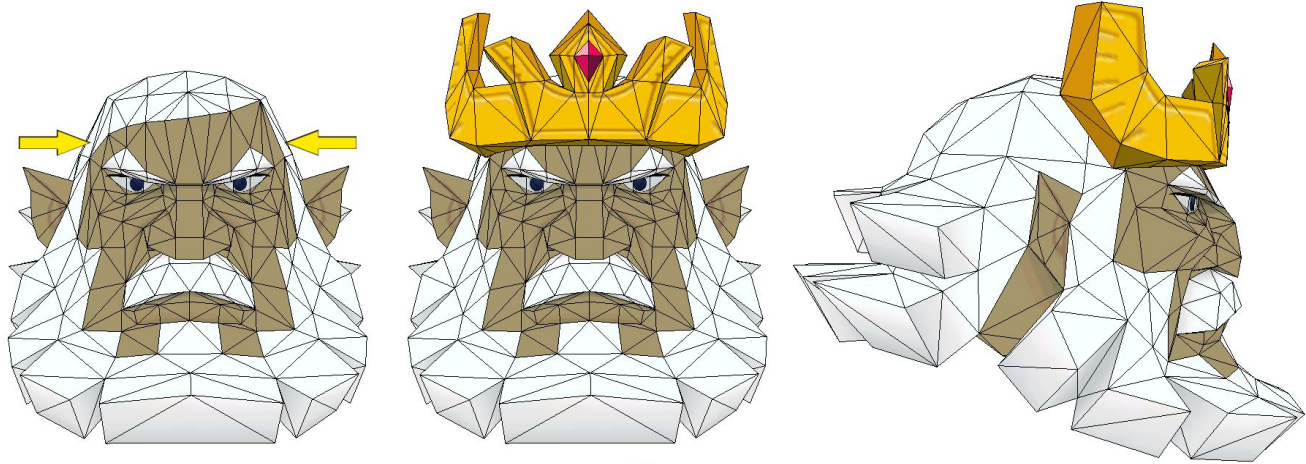
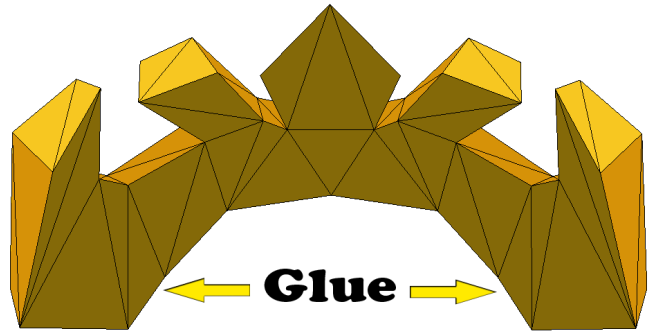
Building Tips

Overall, this papercraft isn't too difficult to build. The body is easy because of its size, however, the head, the crown, and the Triforce on the collar have some small parts, so they can be a little tricky. The head has a bunch of sharp angles, but if you take your time and pay attention to the PDO file, you'll be fine. On the bright side, you don't have to worry about building any hands!

In general, when building the model, just start at one end and work your way to the other end. The PDO file is easy enough to follow, but I have a few specific tips for the final assembly below:

Attaching the Crown

Put a generous portion of glue on the edges where the arrows are pointing in the picture to the right. Align the crown on the head and pinch the crown to insure contact. Now, the waiting game. Hold it for 2-3 minutes to make sure it sticks.

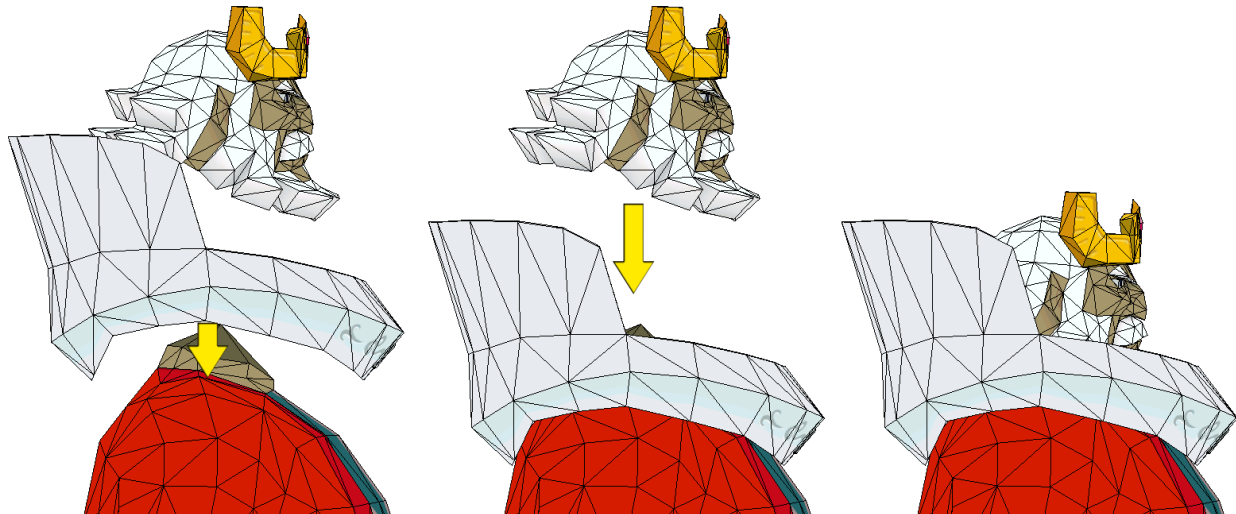


Attaching the Collar

Put a decent amount of glue on the underside of the collar where it rests on top of the shoulders and hold it down for a little bit.

(If for any reason it's not sticking for you,
try to bridge the gap with some card stock)

After securing the collar, go ahead and glue the head onto the neck.

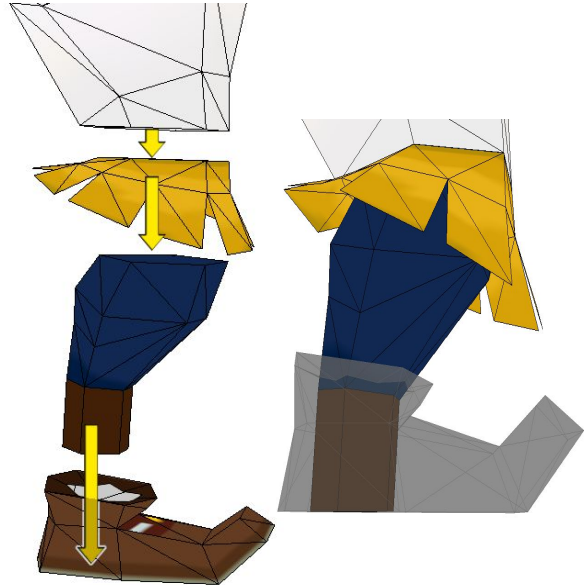


Triforce on the Collar

Put some glue on the back edges of the Triforce and slap it on the collar.

Connecting the Legs

Since these tiny, tiny legs are the foundation of the entire craft, ample glue is recommended for these parts. Glue the yellow cuff part between the pants and the lower leg. Next, apply glue to the bottom of the brown peg (on the blue leg), insert it into the opening on the top of the shoe, and glue it to the inside-bottom of the shoe. Hold it in place for a little while to make sure it's stays put.



The Belt Buckle

Insert the peg on the back of the buckle into the opening on the belt.

The Base*

I recommend reinforcing the inside top and bottom of the base with card stock or, even better, cardboard for durability and to help weigh it down.

*For those of you that print with the “Overflow Paint” option in Pepakura, the glue tab for the top will remain white because it's an image. The geometry is deceitfully complex, causing an ugly mess of glue tabs.

Have fun!



ZetohMunch
paperrascals.blogspot.com