

Belem Tower, Portugal : Pattern

© Canon Inc. © A&A

Canon



View of completed model

Belem Tower, Portugal

Belem Tower is a fortress constructed over the years 1515 to 1519 in the Belem area of Lisbon. The structure's official name is *Torre de São Vicente* (St. Vincent's Tower). In contrast to its beautiful Manueline exterior, this landmark, also known as "our Lady of the River Tagus," features a water dungeon constructed underground to hold political prisoners. In 1983, it was placed on the list of UNESCO World Heritage Sites, together with the Monastery of the Hieronymites. Today, its interior serves as a museum.

* This model was designed for Papercraft and may differ from the original in some respects.

■ Parts list (pattern) : Twenty US letter sheets (No. 1 to No. 20)

■ No. of Parts : 84

* Build the model by carefully reading the Assembly Instructions , in the parts sheet page order.

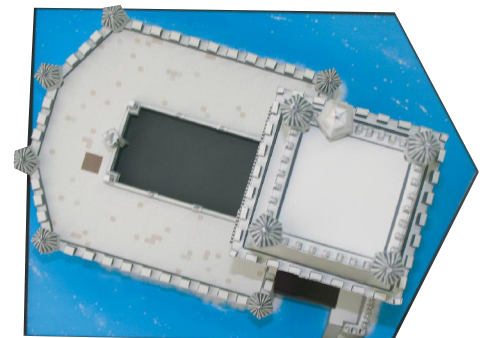
Front view



Side view



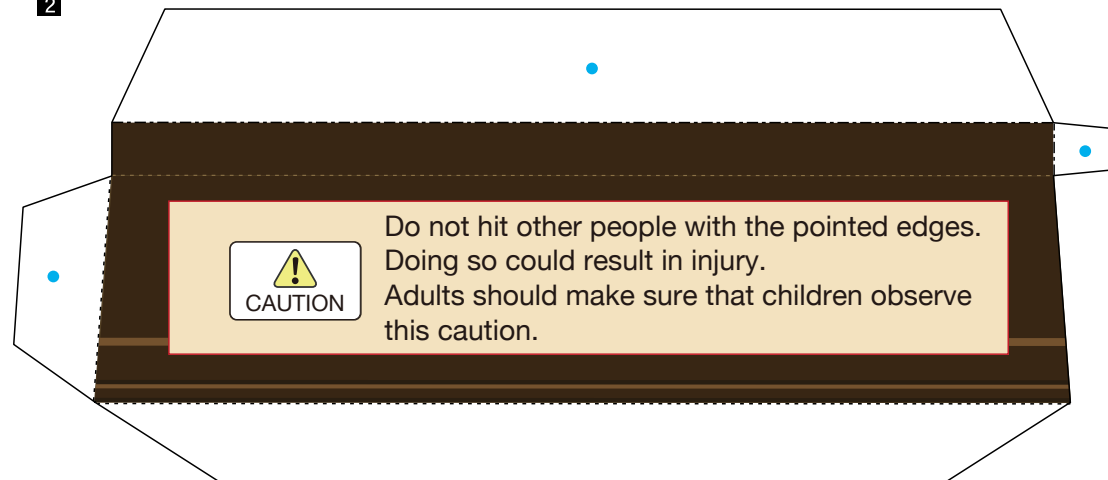
Overhead view



1



2

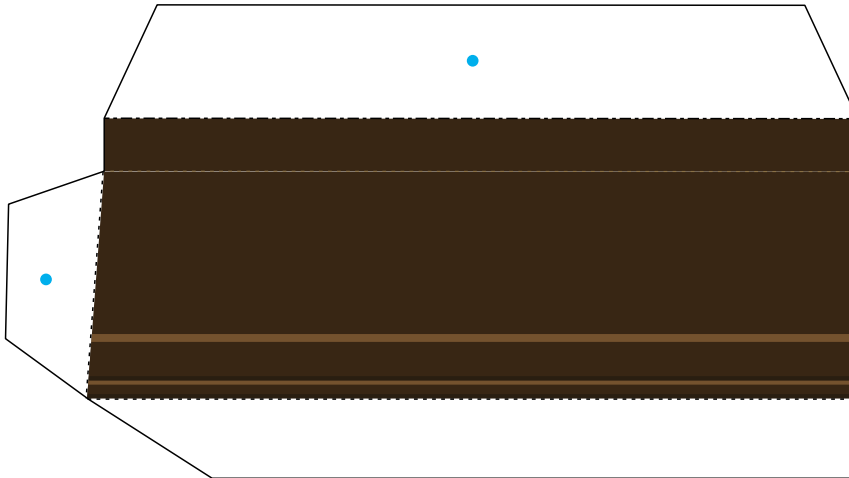


Belem Tower, Portugal : Pattern

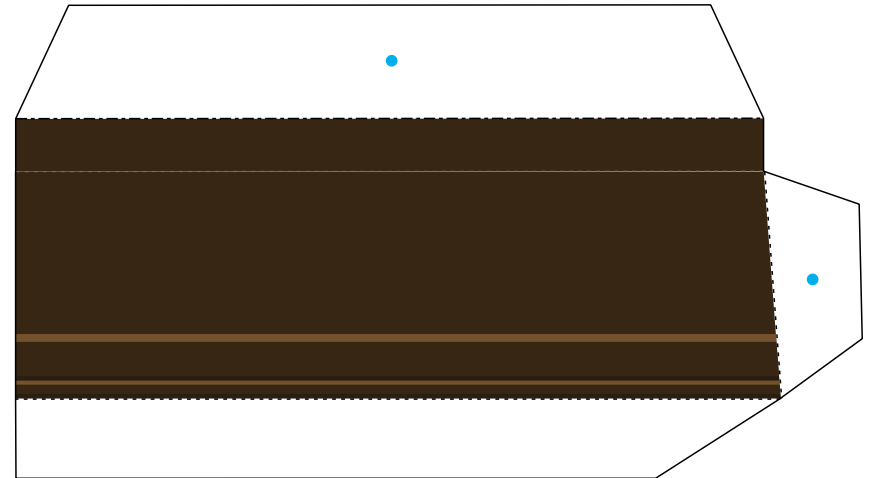
© Canon Inc. © A&A



3



4



5



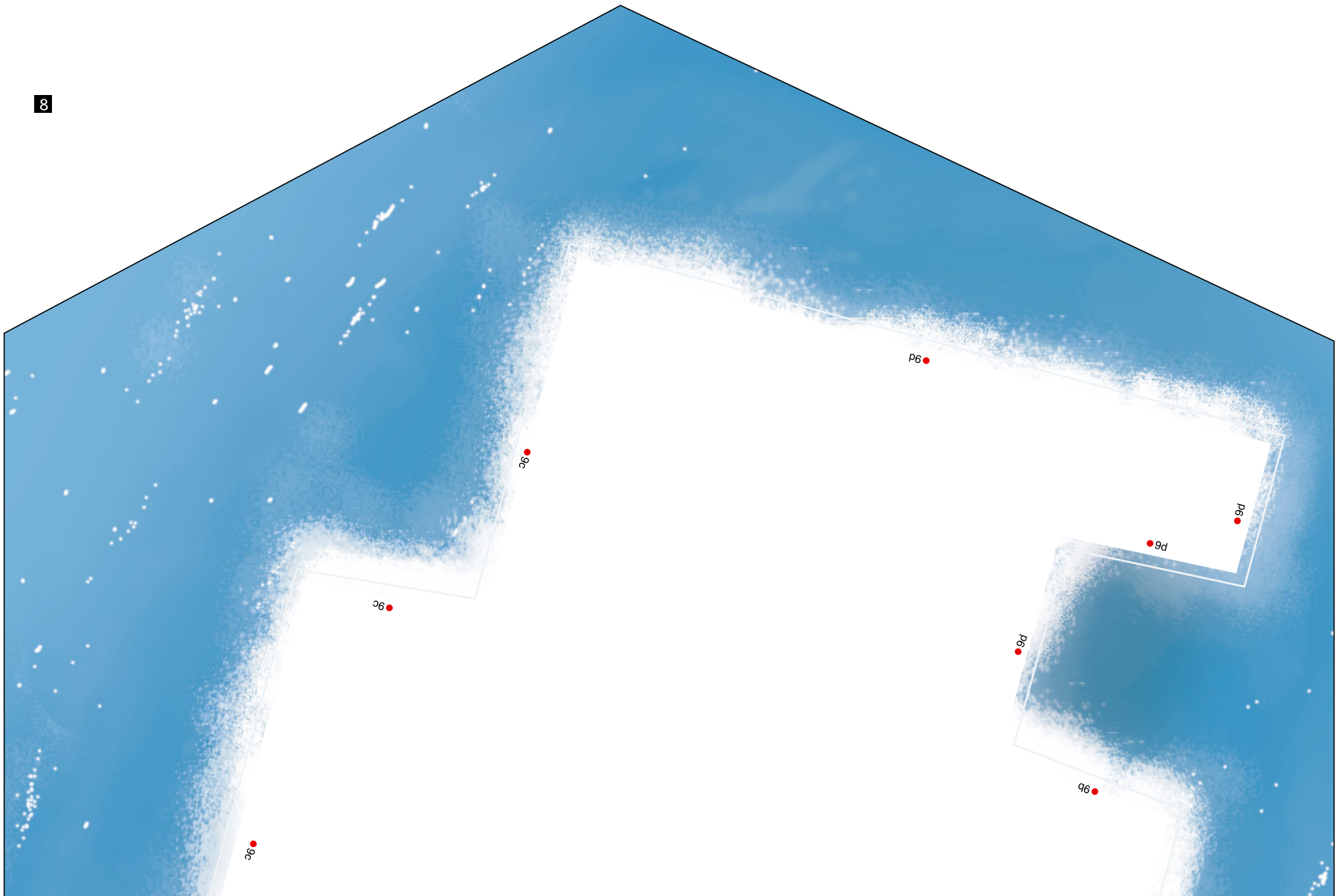
6

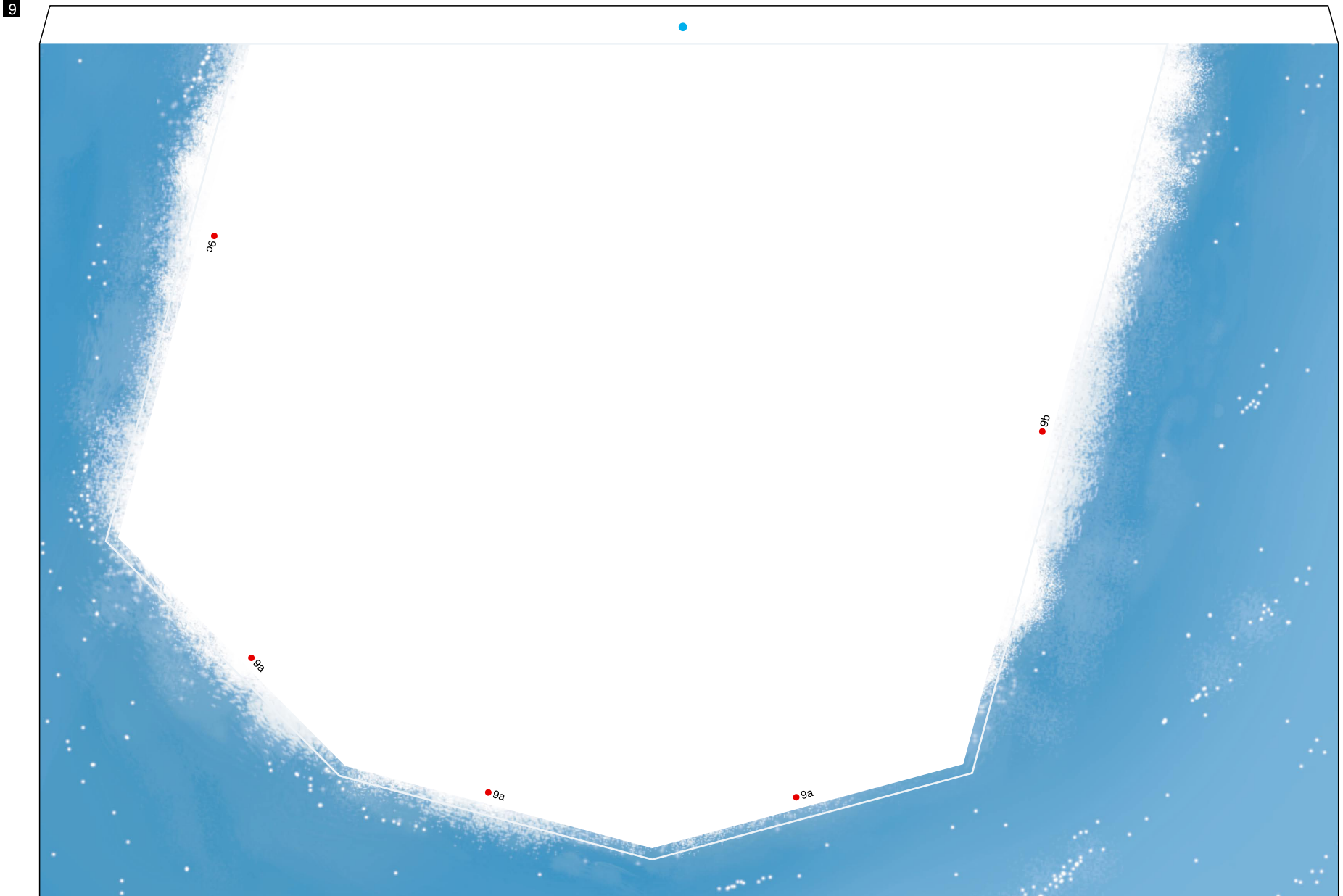


7

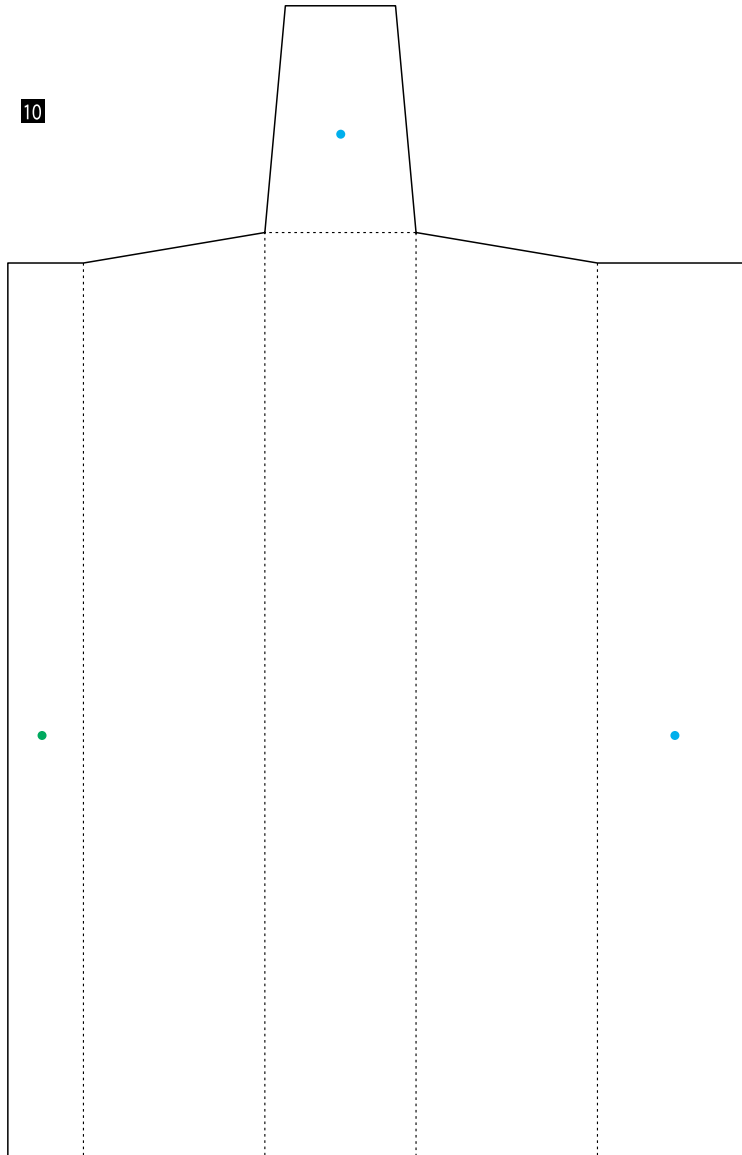


8

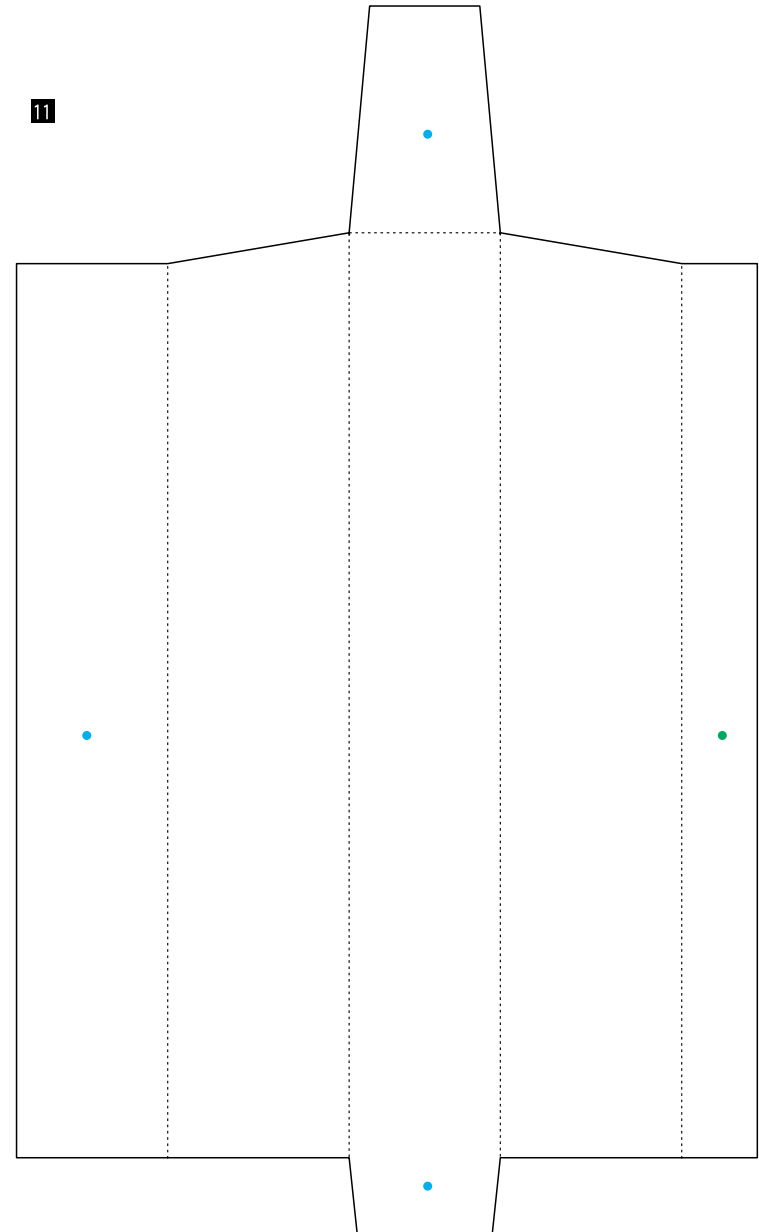




10



11

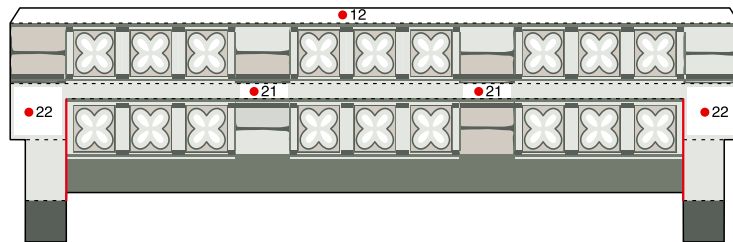


Belem Tower, Portugal : Pattern

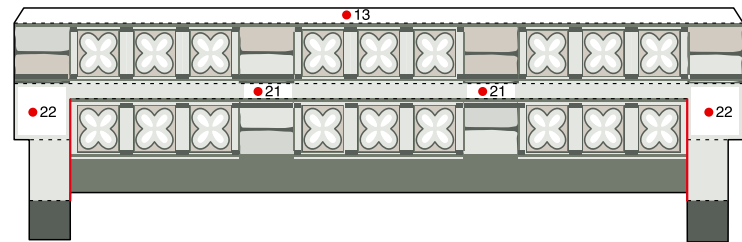
© Canon Inc. © A&A

Canon

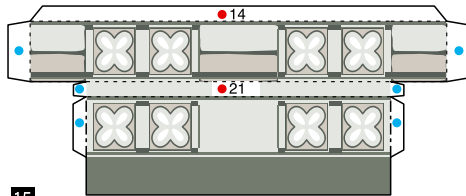
12



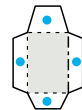
13



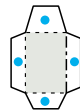
14



16



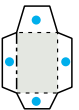
16



17



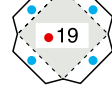
17



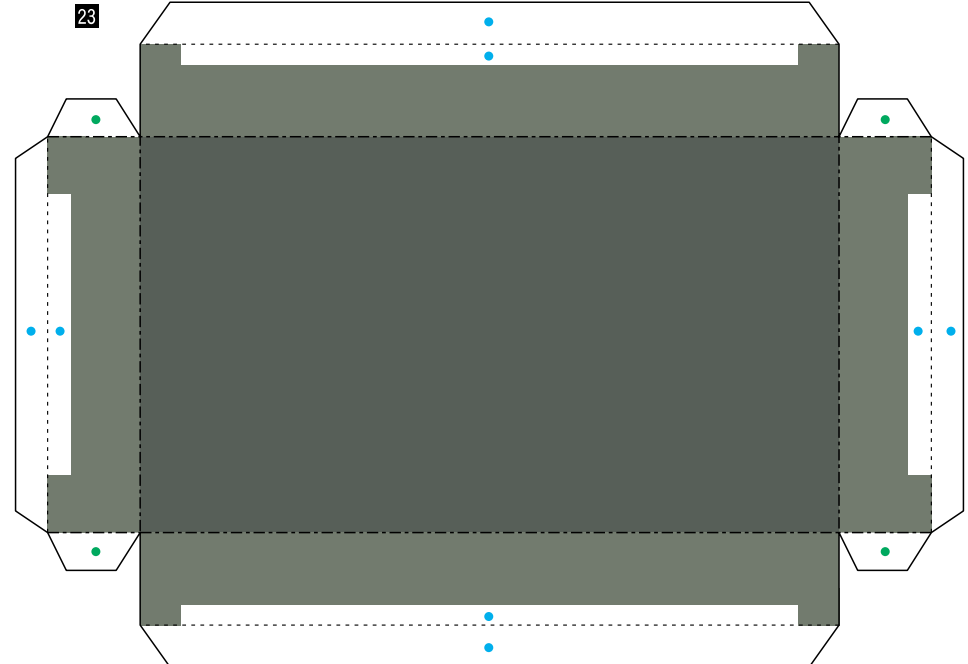
18



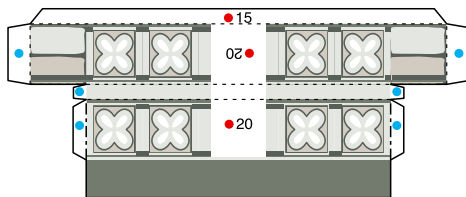
19



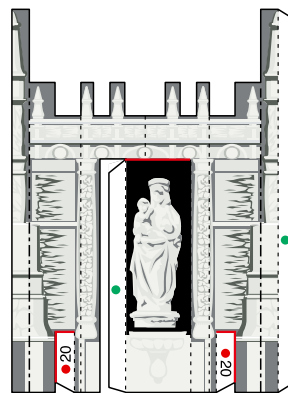
23



15



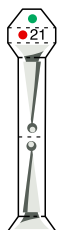
20



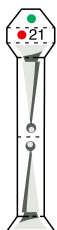
21



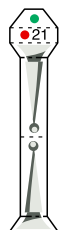
21



21



21



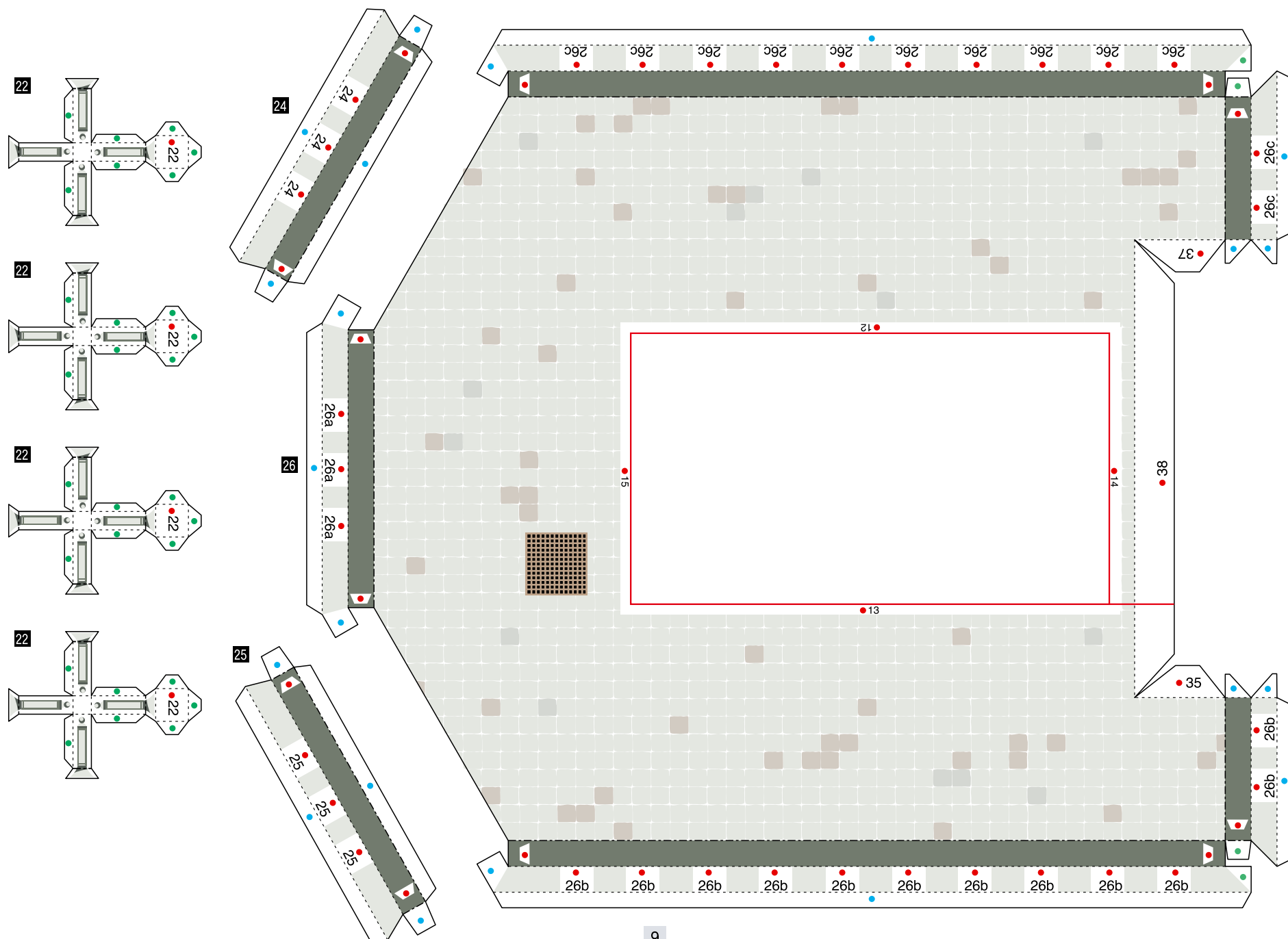
21



Belem Tower, Portugal : Pattern

© Canon Inc. © A&A

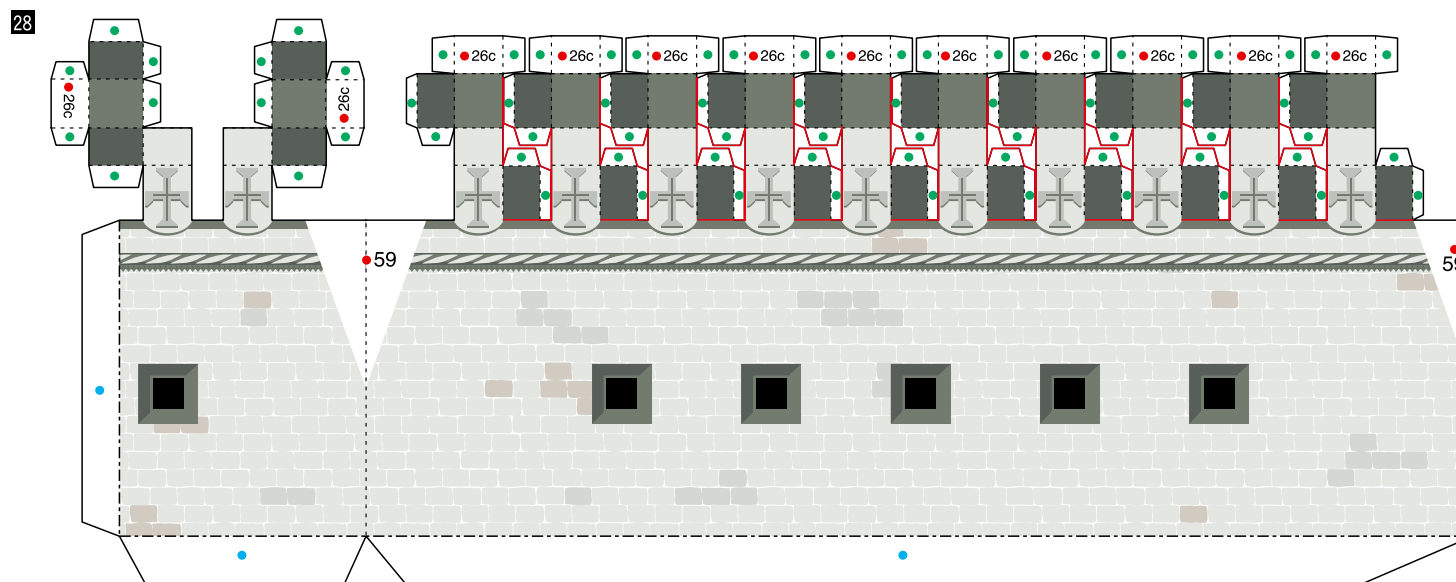
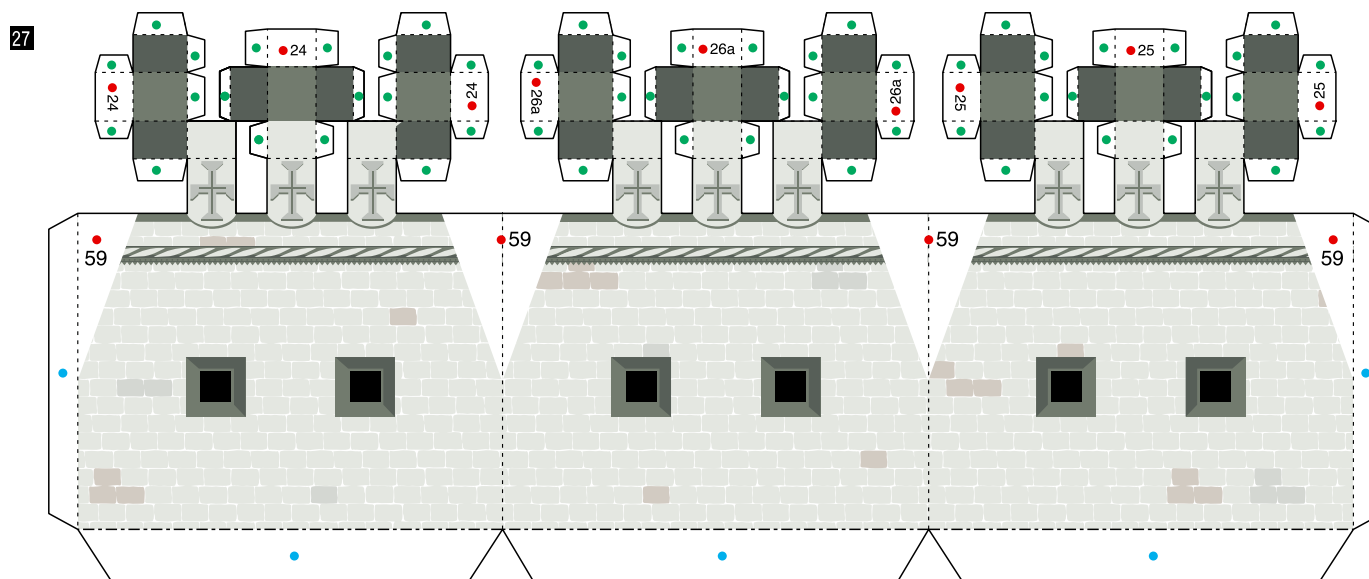
Canon



Belem Tower, Portugal : Pattern

© Canon Inc. © A&A

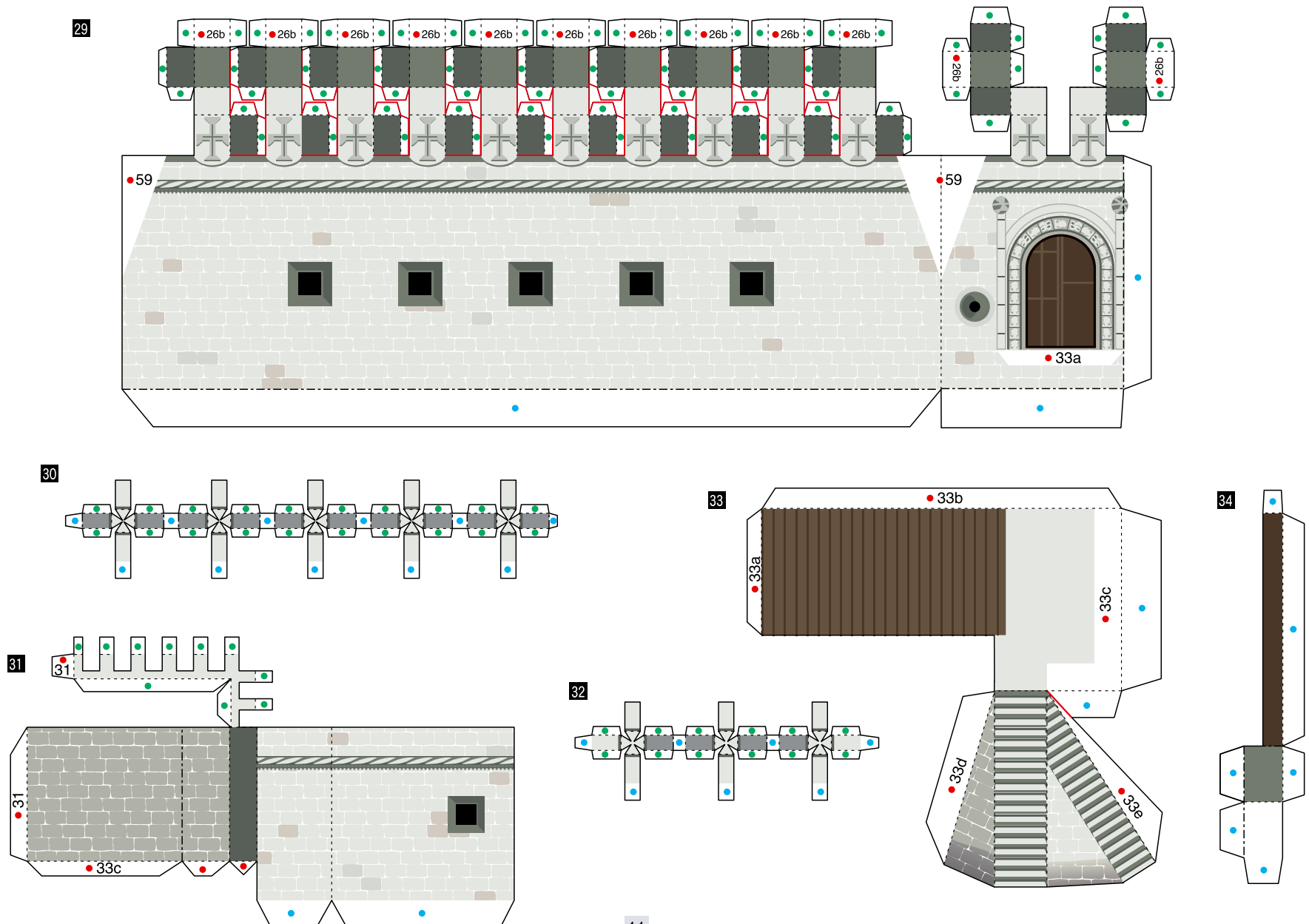
Canon



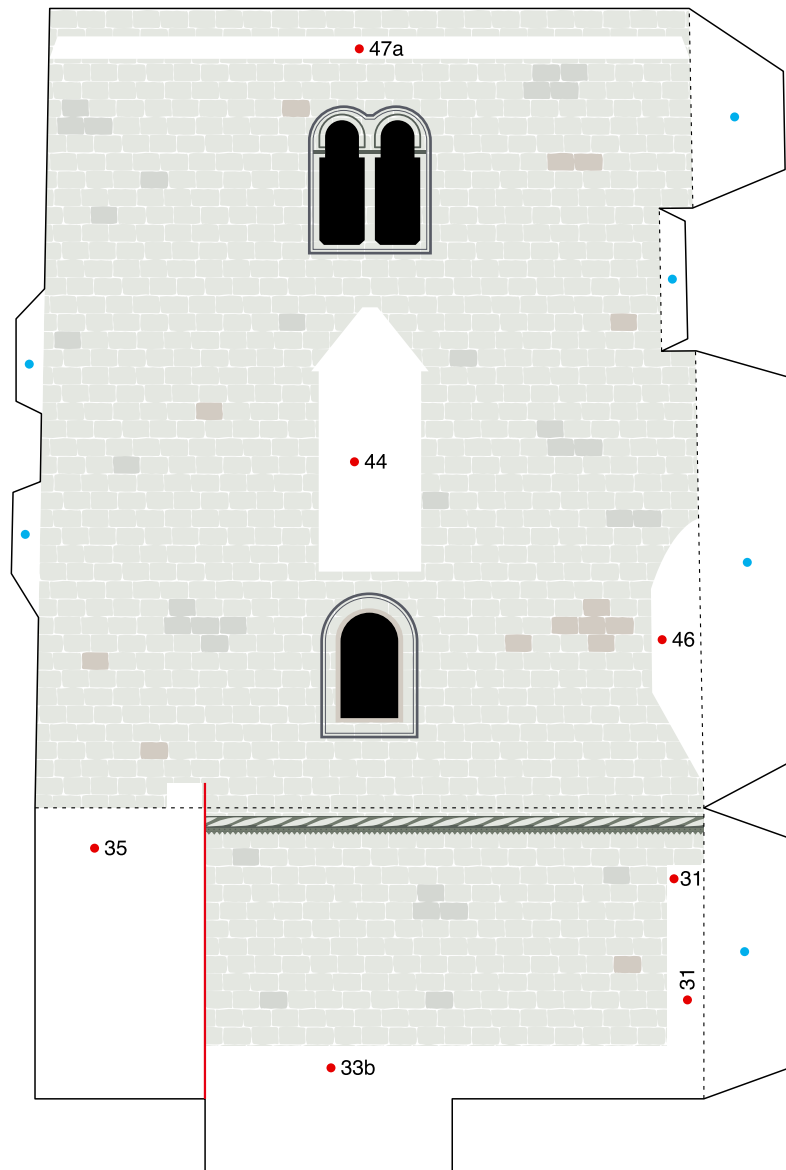
Belem Tower, Portugal : Pattern

© Canon Inc. © A&A

Canon



35



36

