



View of completed model

Taj Mahal, India

The Taj Mahal is a palatial mausoleum built by the fifth Mughal emperor Shah Jahan in memory of his favorite wife. It was built over a period of 22 years, starting from 1632, by approximately 20,000 workers. With a white marble mosque, front gate, and other structures of perfect symmetry, the Taj Mahal is truly a work of art in every detail.

*This model was designed for Papercraft and may differ from the original in some respects.

■ Parts list(pattern): Ten US letter sheets(No.1 to No.10)

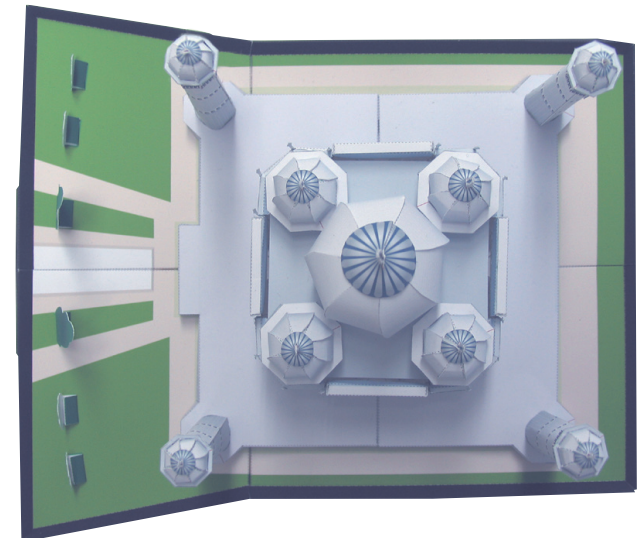
■ No. of Parts:82

*Build the model by carefully reading the Assembly Instructions, in the parts sheet page order.

Front view

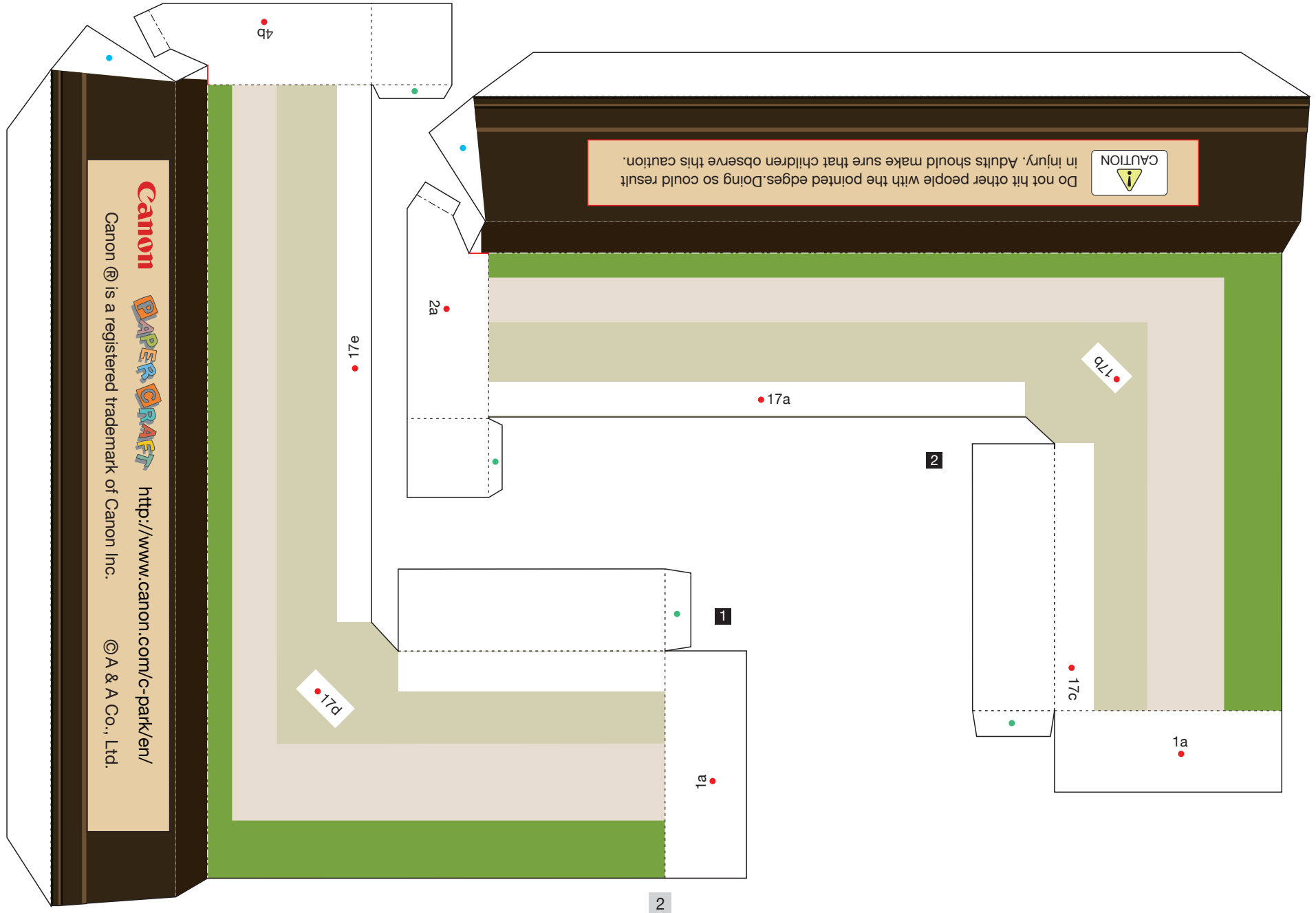


Overhead view

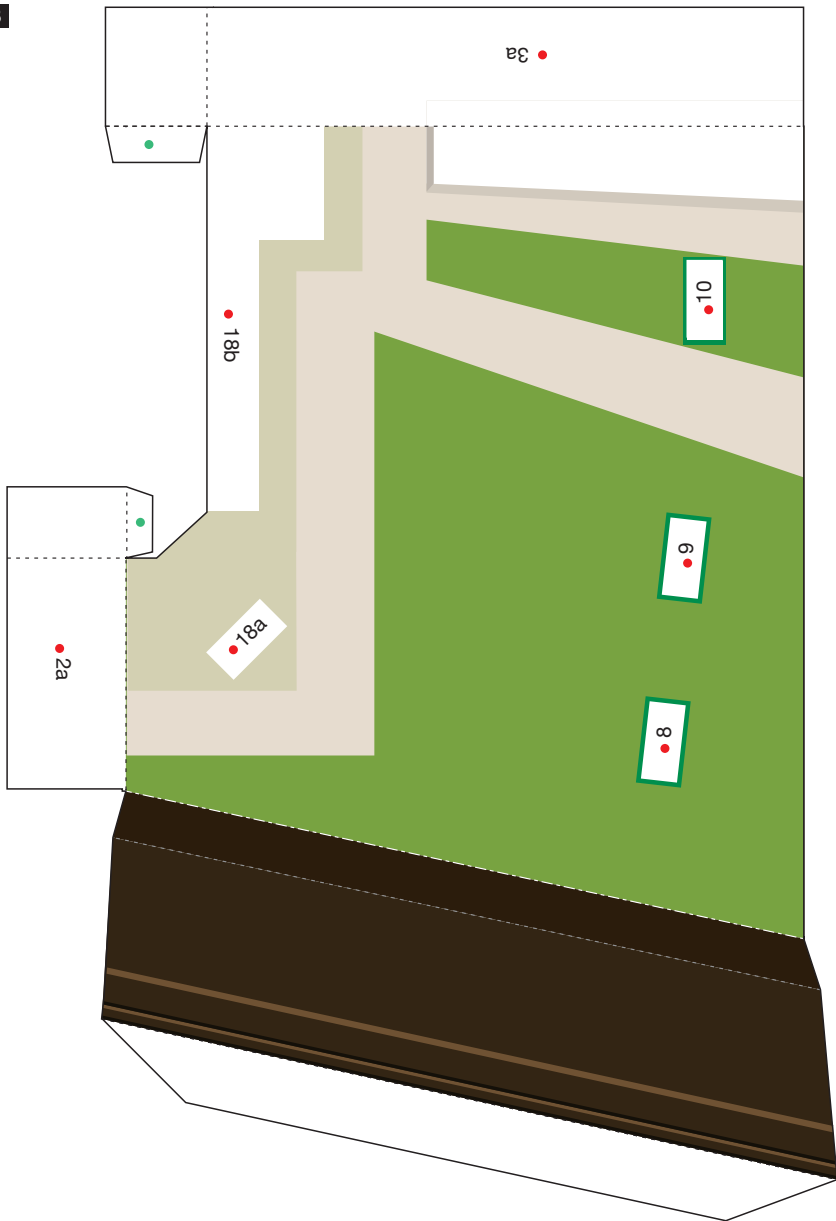


Taj Mahal, India: Pattern

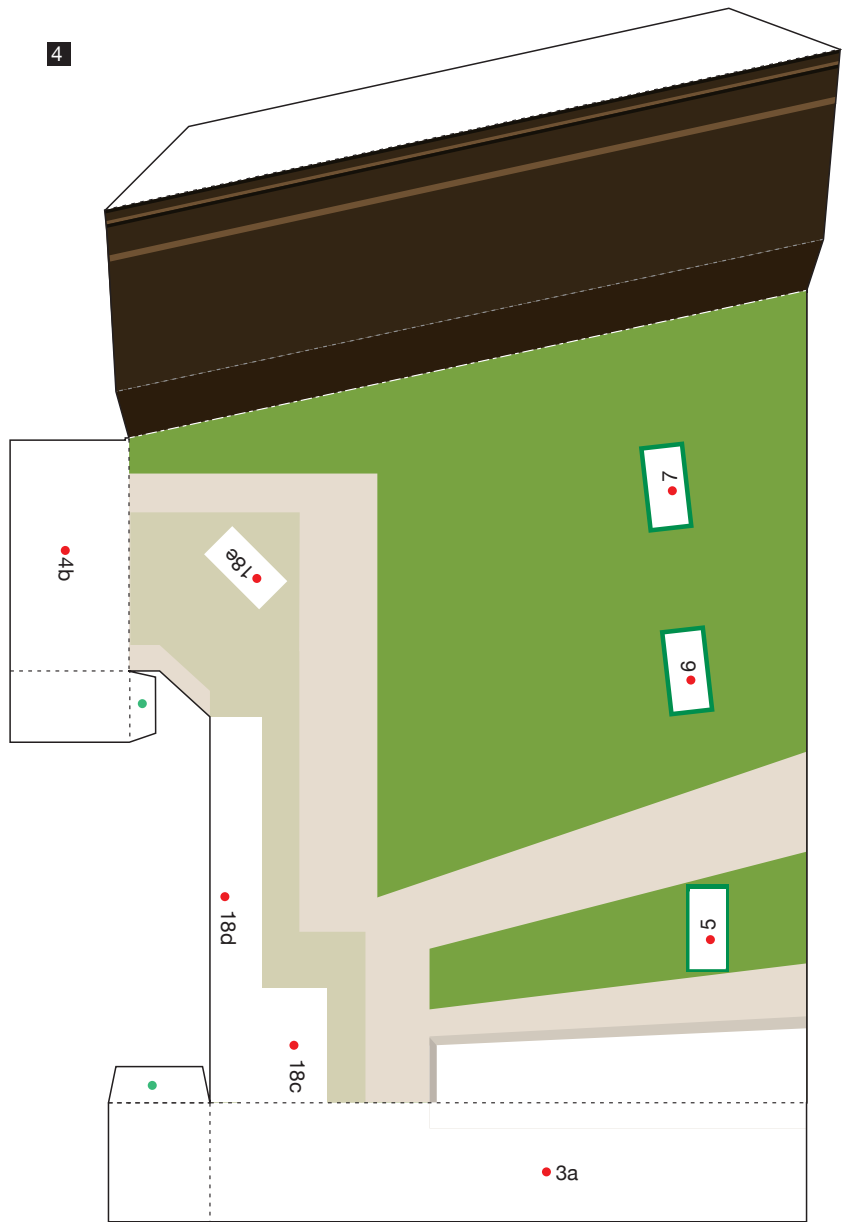
Canon ® is a registered trademark of Canon Inc. © Canon Inc. © A & A Co., Ltd.



3



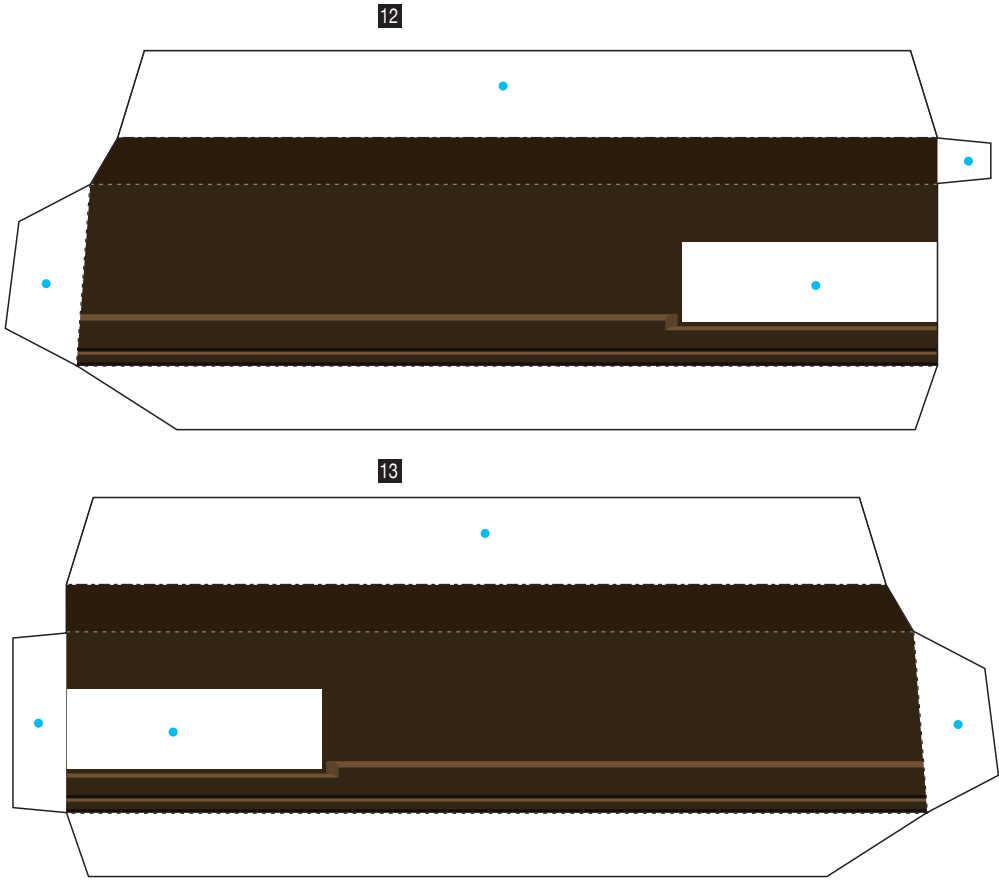
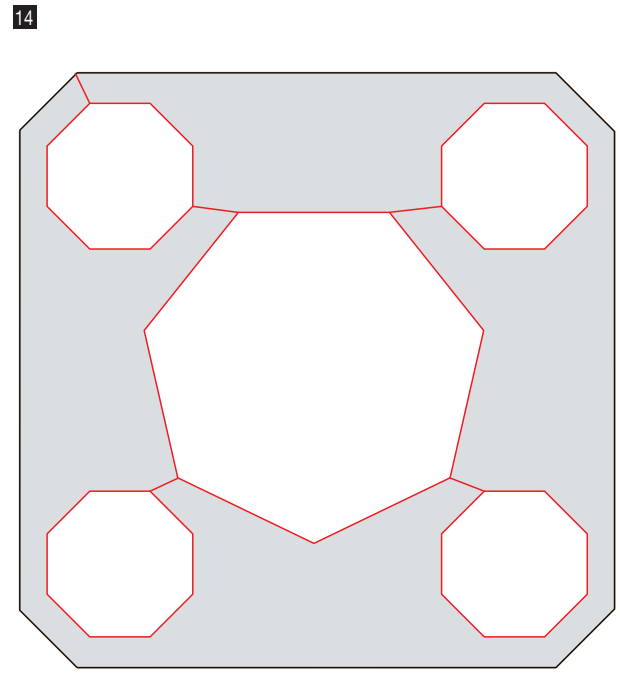
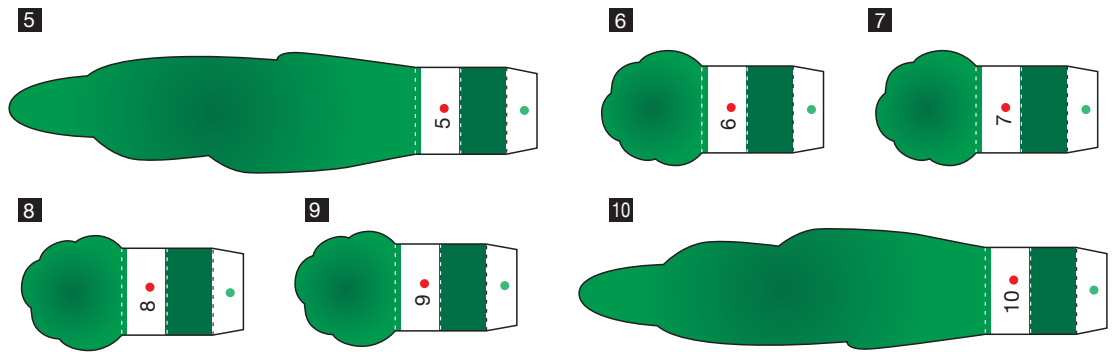
4

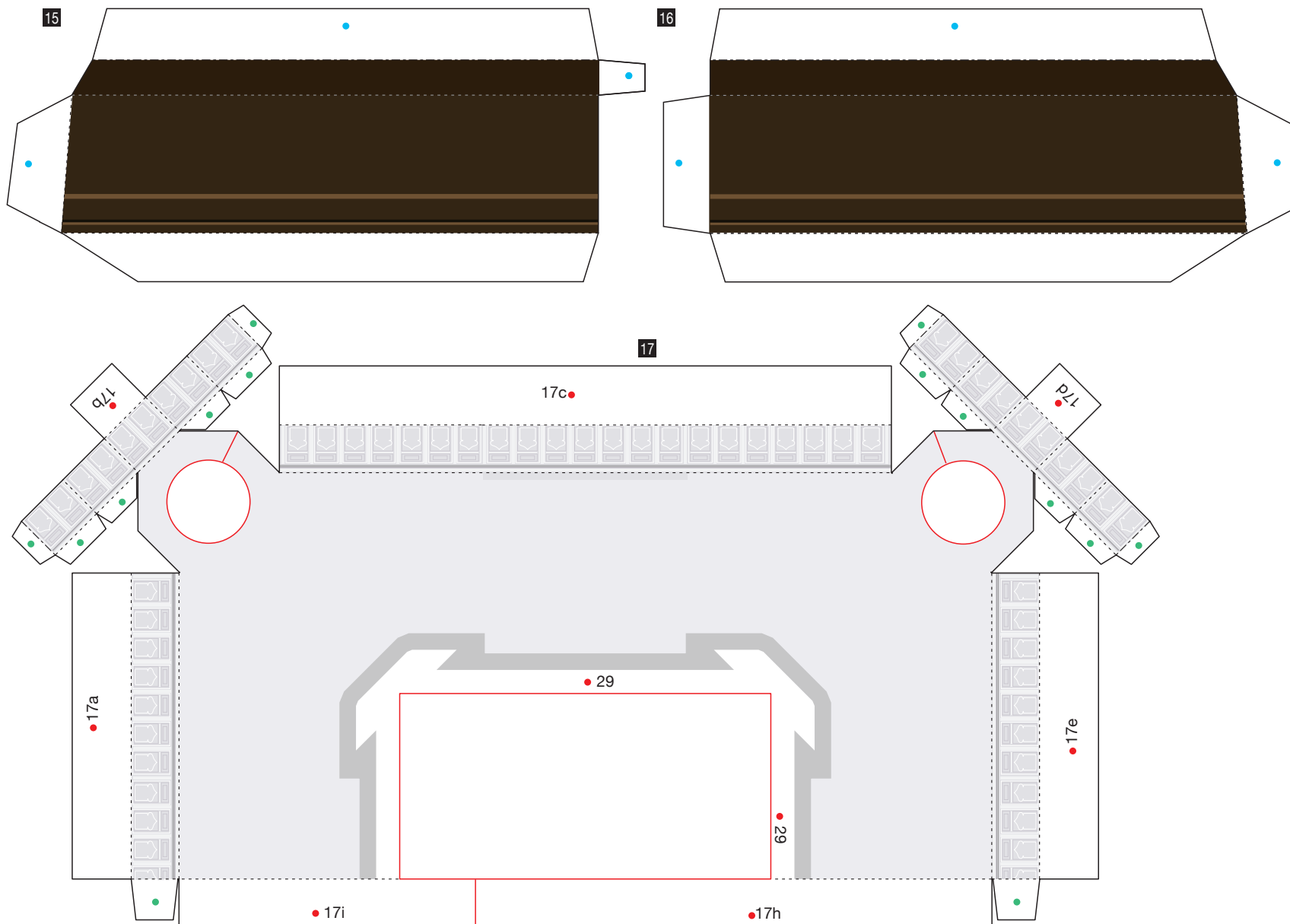


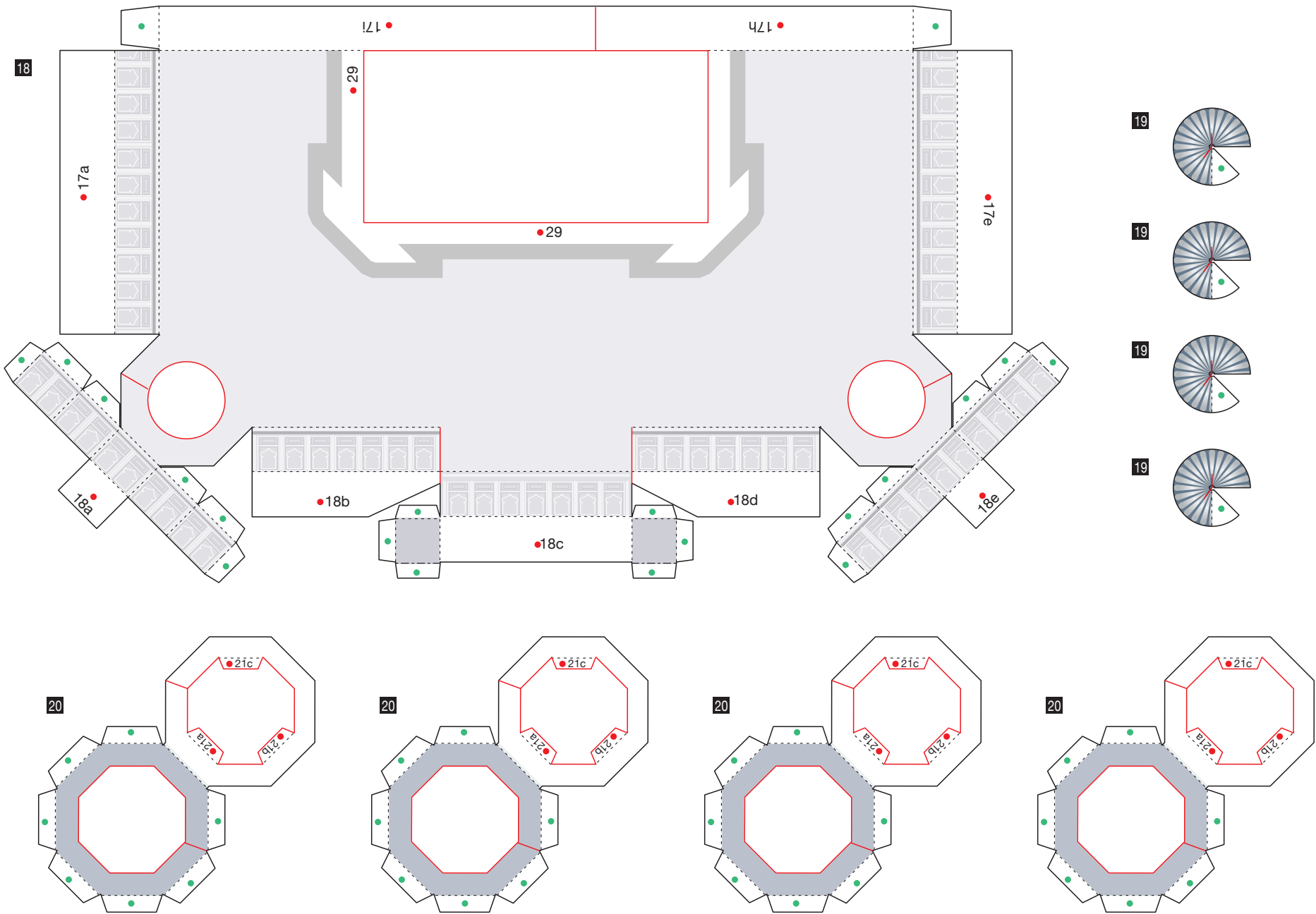
3

Taj Mahal, India: Pattern

Canon ® is a registered trademark of Canon Inc. © Canon Inc. © A & A Co., Ltd.

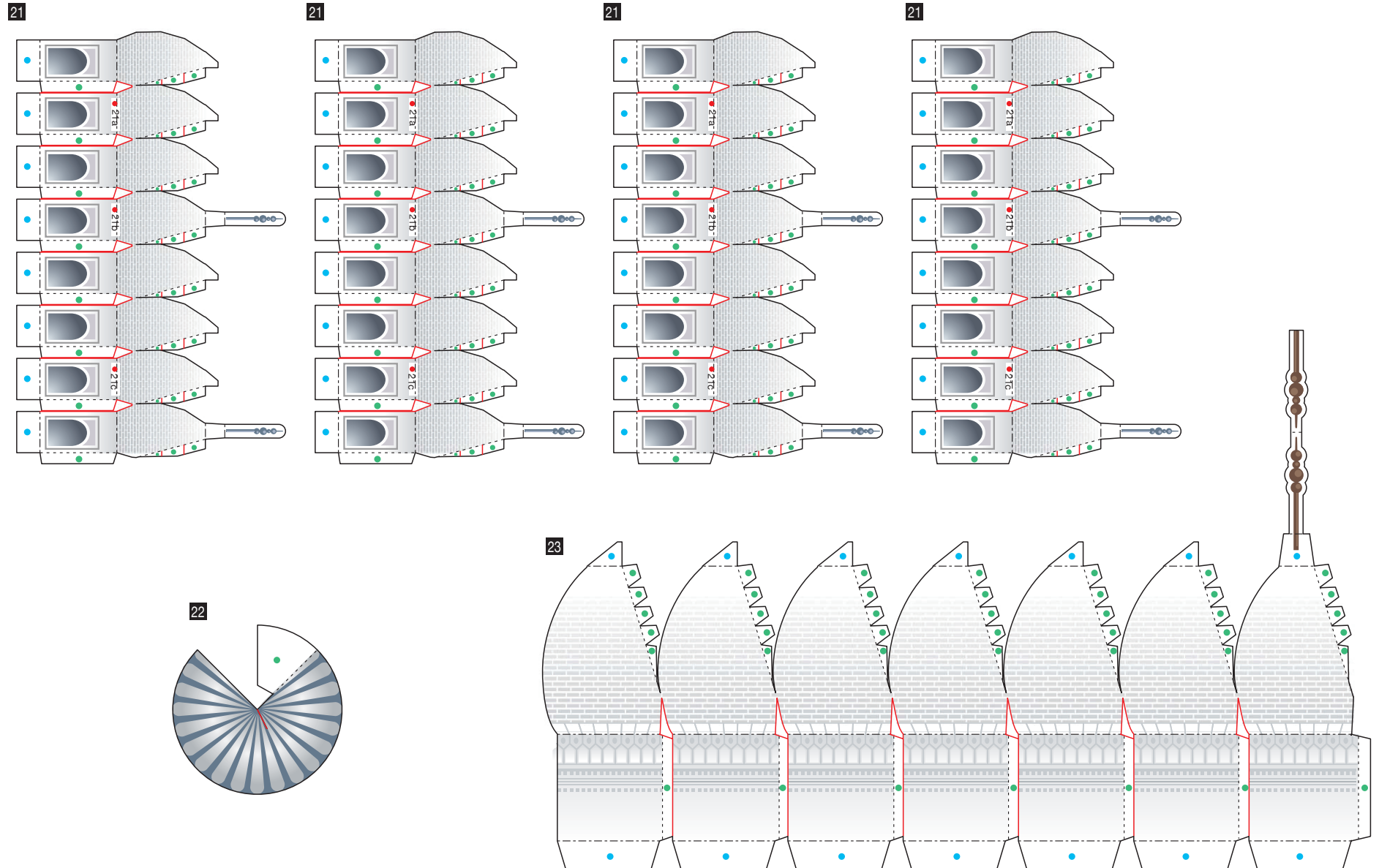






Taj Mahal, India: Pattern

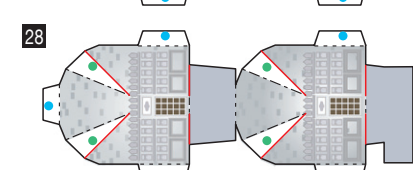
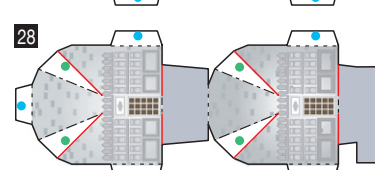
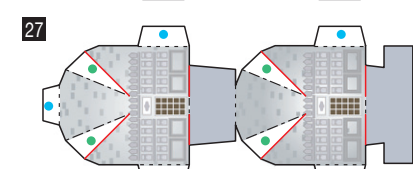
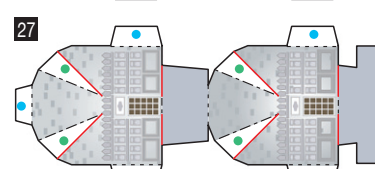
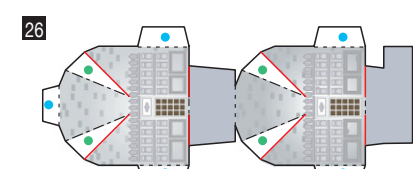
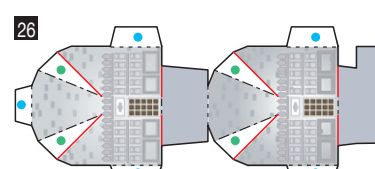
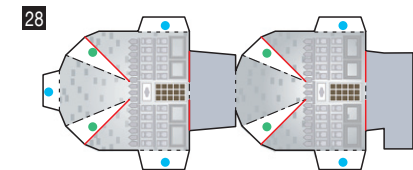
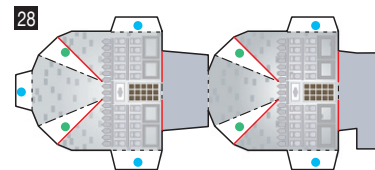
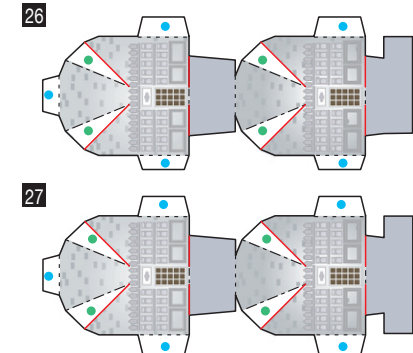
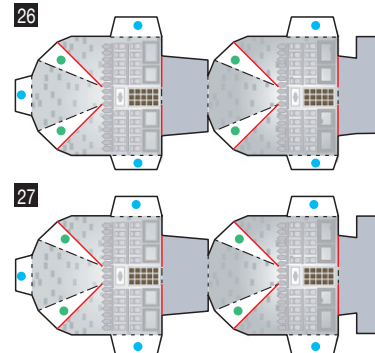
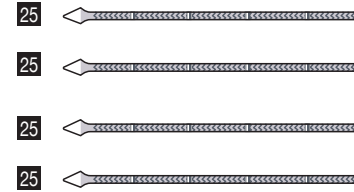
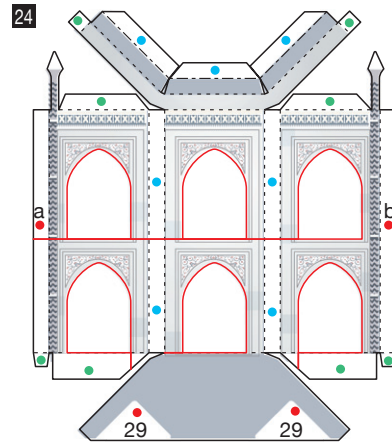
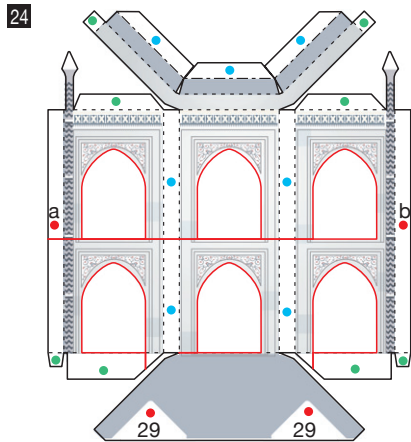
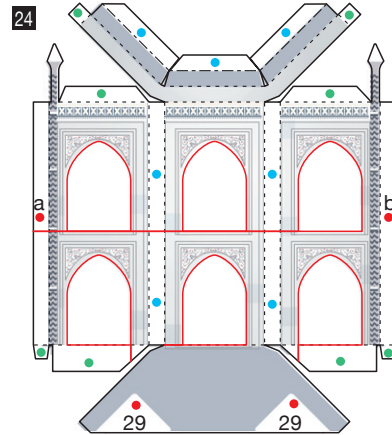
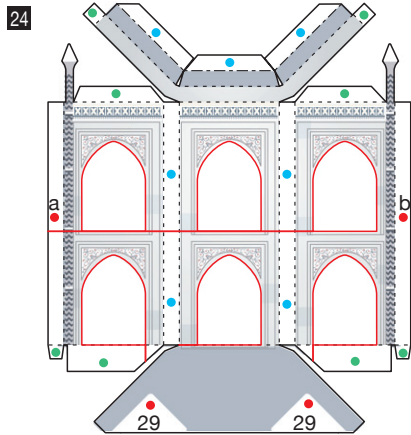
Canon ® is a registered trademark of Canon Inc. © Canon Inc. © A & A Co., Ltd.



Taj Mahal, India: Pattern

Canon ® is a registered trademark of Canon Inc. © Canon Inc. © A & A Co., Ltd.

Canon



Taj Mahal, India: Pattern

Canon ® is a registered trademark of Canon Inc. © Canon Inc. © A & A Co., Ltd.

Canon

