

# Traditional *gasshozukuri* architecture, Japan: Assembly Instructions

Canon ® is a registered trademark of Canon Inc. © Canon Inc.  
© Hiroshi Chiba/PAPERART-C

**Canon**

## PAPER CRAFT

<http://www.canon.com/c-park/en/>

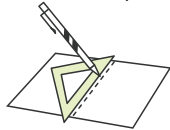


View of completed model

\*This model was designed for Papercraft and may differ from the original in some respects.

### ■ Assembly Instructions: Three US letter sheets (No.1 to No.3)

\*Build the model by carefully reading the Assembly Instructions, in the parts sheet page order.



\*Hint: Trace along the folds with a ruler and an exhausted pen (no ink) to get a sharper, easier fold.

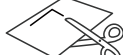
### Assembly Instructions



**Mountain fold(dotted line)**  
Make a mountain fold.



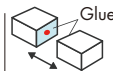
**Valley fold(dashed and dotted line)**  
Make a valley fold.



**Scissors line(solid line)**  
Cut along the line.



**Cut in line(solid line)**  
Cut along the line.



**Glue**  
The glue spot(colored dot) shows where to apply the glue.



**Glue spot(Red dot)**  
Glue parts with the same number together.



**Glue spot(Green dot)**  
Glue within the same part.



**Glue spot(Blue dot)**  
Glue to the rear of the other part.

#### Tools and materials



Scissors, set square, glue(We recommend stick glue), pencil, used ballpoint pen, toothpicks, tweezers, (useful for handling small parts)

#### Assembly tip



Before gluing, crease the paper along mountain fold and valley fold lines and make sure rounded sections are nice and stiff.

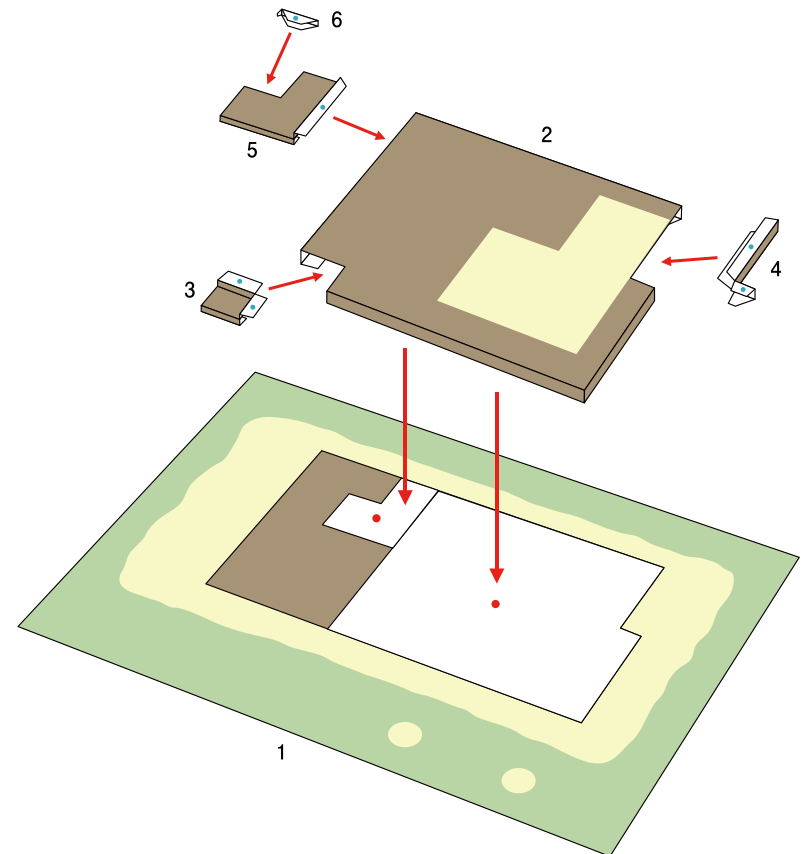
#### Caution



Glue, scissors and other tools may be dangerous to young children so be sure to keep them out of the reach of young children.

Before starting assembly: Writing the number of each section on its back side before cutting out the sections is highly recommended.  
(\* This way, you can be sure which section is which even after cutting out the sections.)

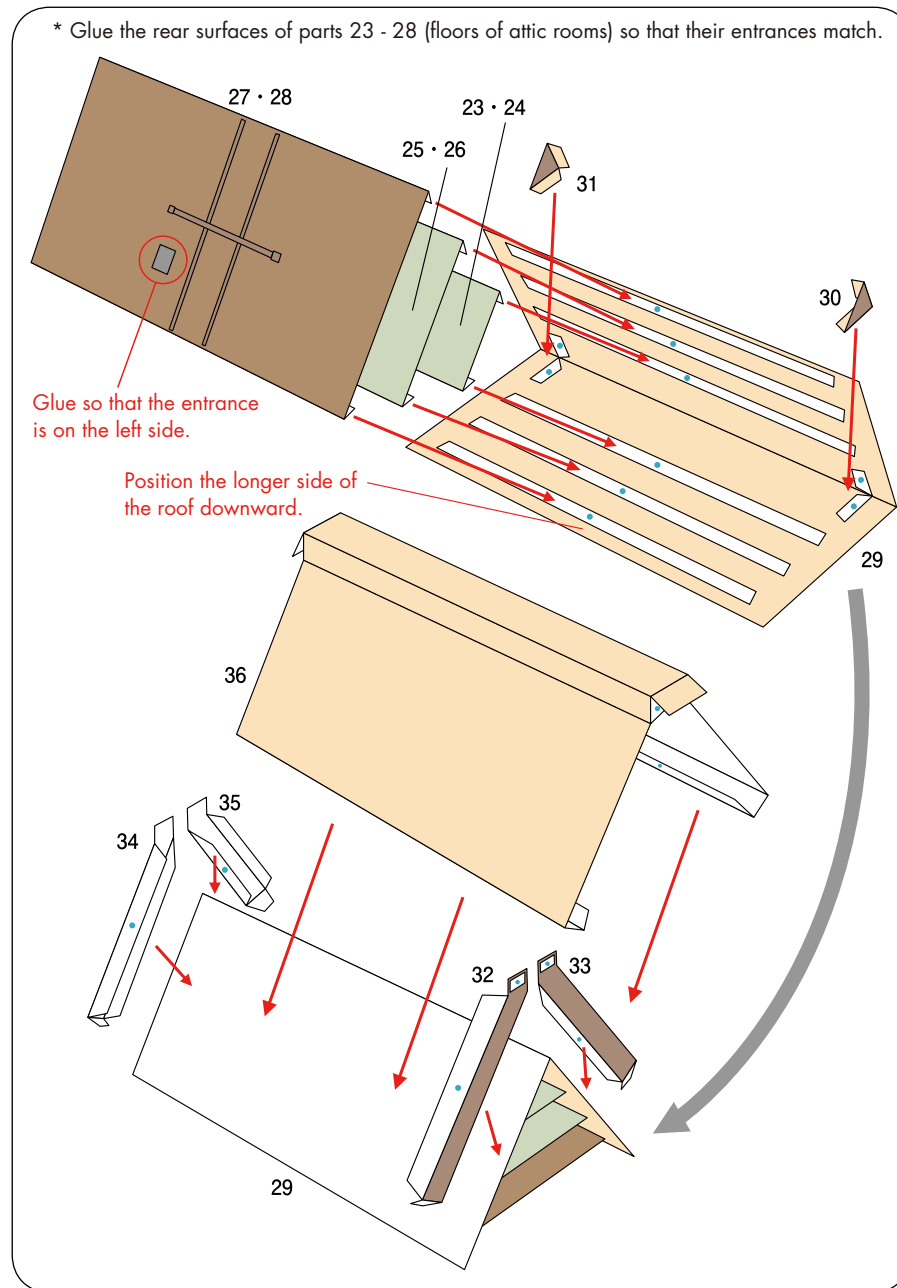
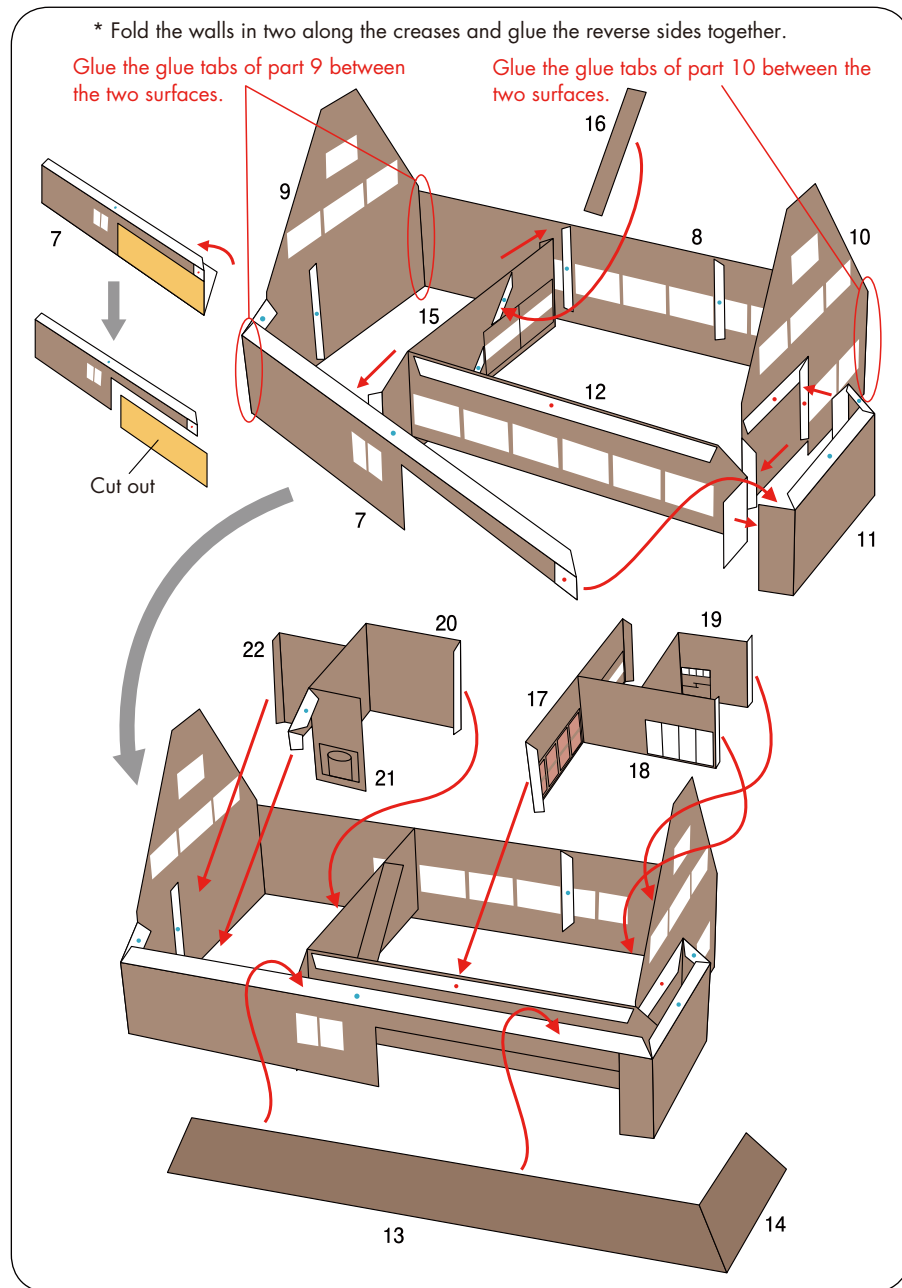
→ Indicates where sections should be glued together.  
→ Indicates where to insert sections.  
Do not glue the sections together.  
Indicates sections that should be glued first, then cut out.



# Traditional *gasshozukuri* architecture, Japan: Assembly Instructions

Canon ® is a registered trademark of Canon Inc. © Canon Inc.  
© Hiroshi Chiba/PAPERART-C

Canon



# Traditional *gasshozukuri* architecture, Japan: Assembly Instructions

Canon ® is a registered trademark of Canon Inc. © Canon Inc.  
© Hiroshi Chiba/PAPERART-C

Canon

