

View of completed model

Forbidden City, China

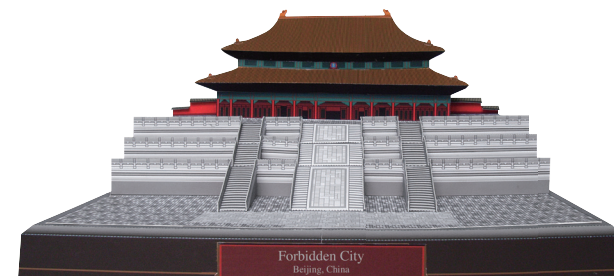
Built in the Yuan Dynasty, the Forbidden City was reconstructed during the Ming Dynasty and used as the Chinese imperial palace, serving this purpose until the fall of the Qing Dynasty. Today, it is known as the Palace Museum. The Palace Museum has six gates, including the Tiananmen Gate. Its ancient foundation is the largest in the world in terms of surface area, covering approximately 720,000 square meters. Tiananmen, a center of politics from the Qing Dynasty through the era of Mao Tse-Tung, is where laws were proclaimed.

* The Hall of Supreme Harmony located in the center of the Palace Museum in this model has been modified to accommodate the limitations of paper models. Certain aspects may differ from the actual structure.

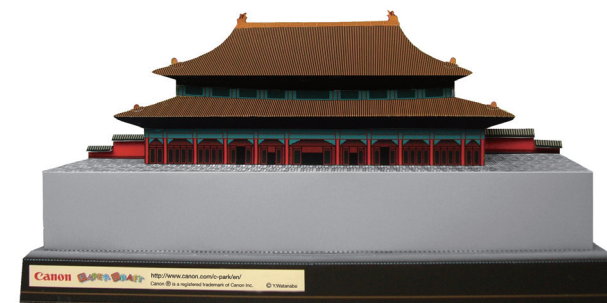
■ Parts list(pattern):Thirteen US letter sheets(No.1 to No.13)

■ No. of Parts:77

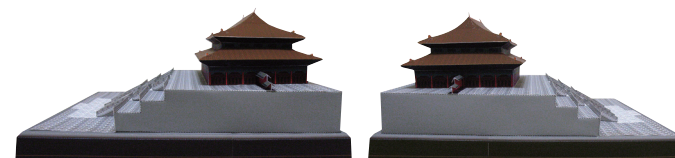
*Build the model by carefully reading the Assembly Instructions, in the parts sheet page order.



Front view



Rear view

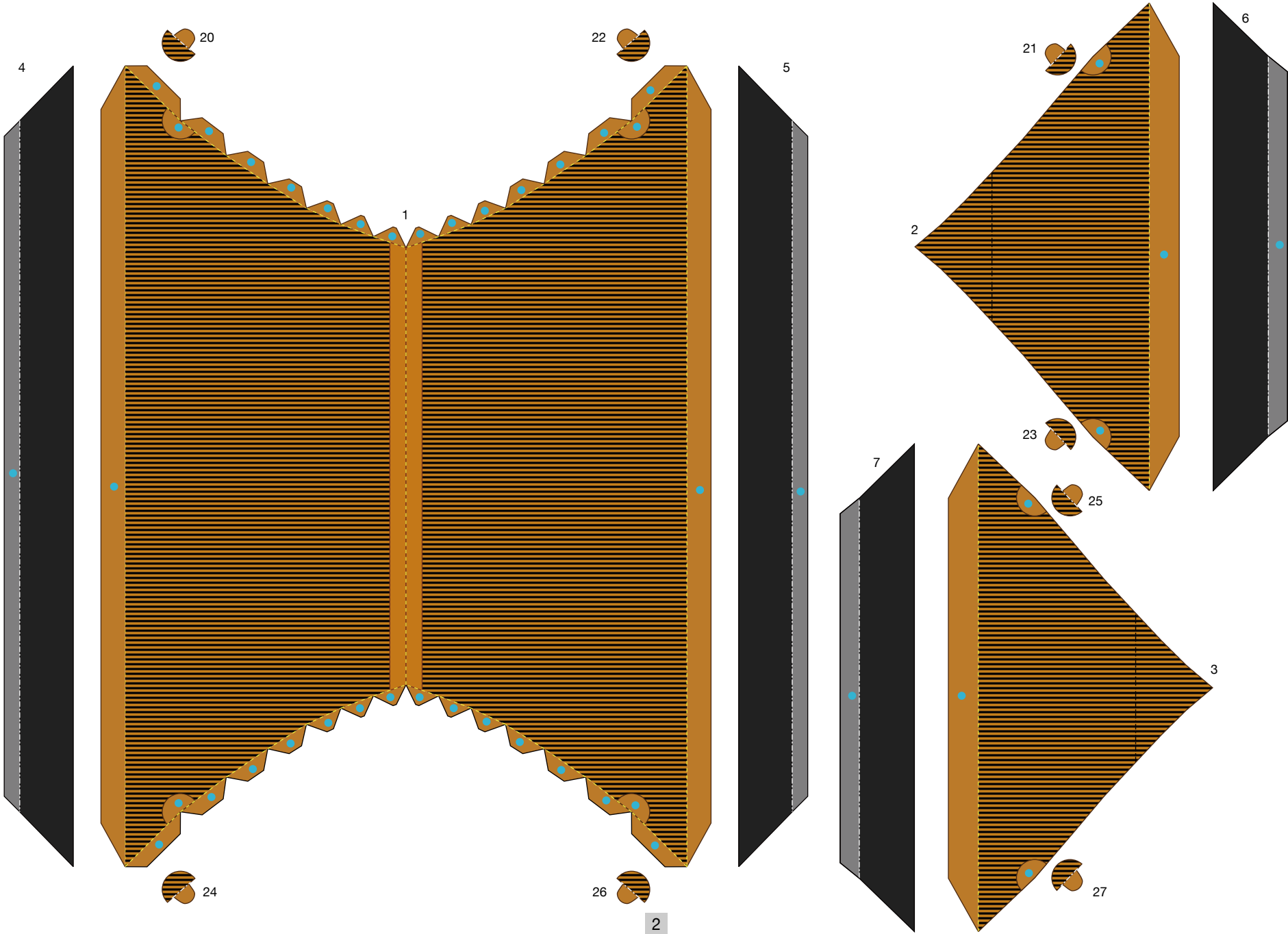


Side view 1

Side view 2

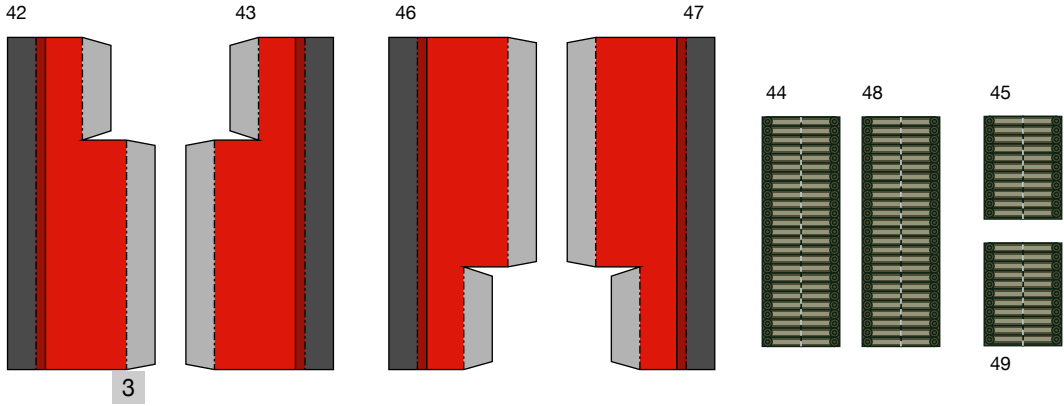
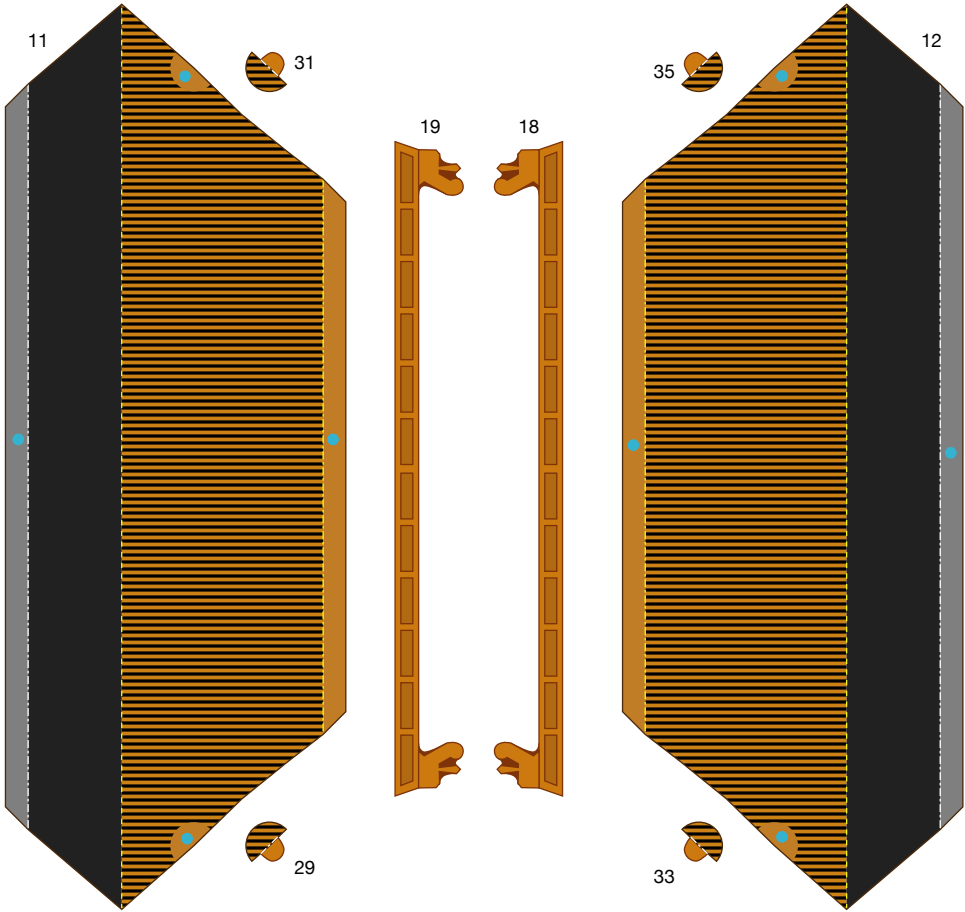
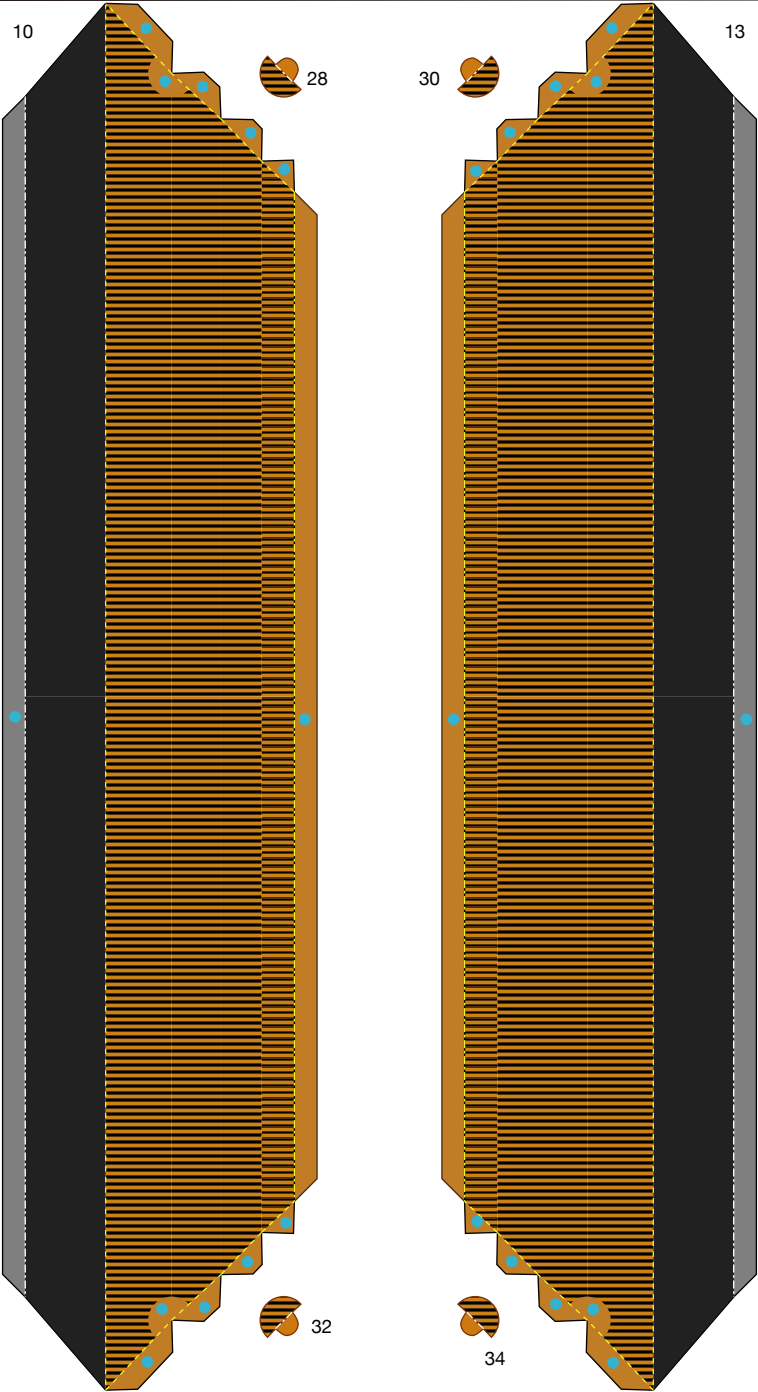
Forbidden City, China: Pattern

Canon® is a registered trademark of Canon Inc. © Canon Inc. © Y.Watanabe



Forbidden City, China: Pattern

Canon® is a registered trademark of Canon Inc. © Canon Inc. © Y.Watanabe

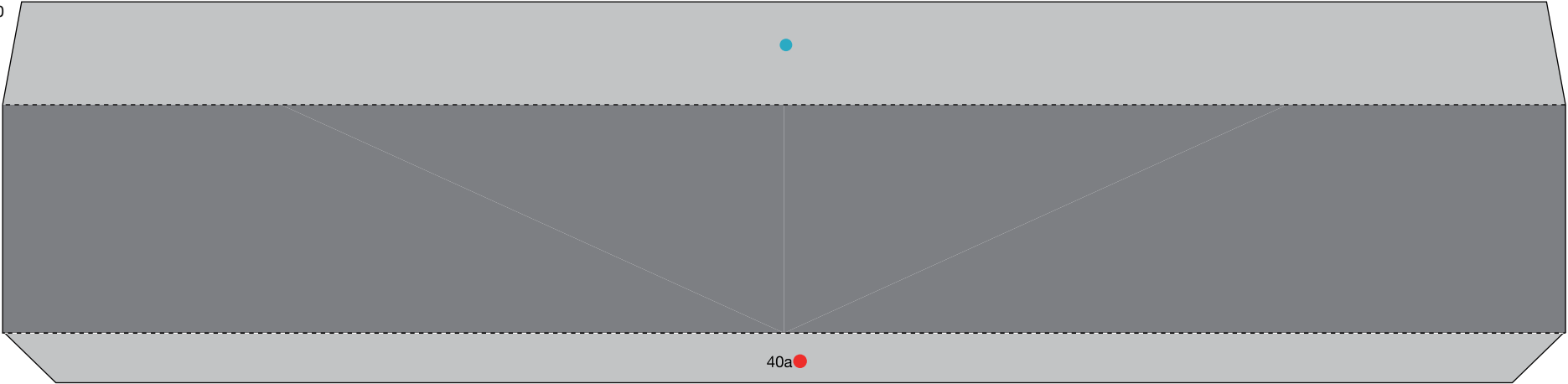


Forbidden City, China: Pattern

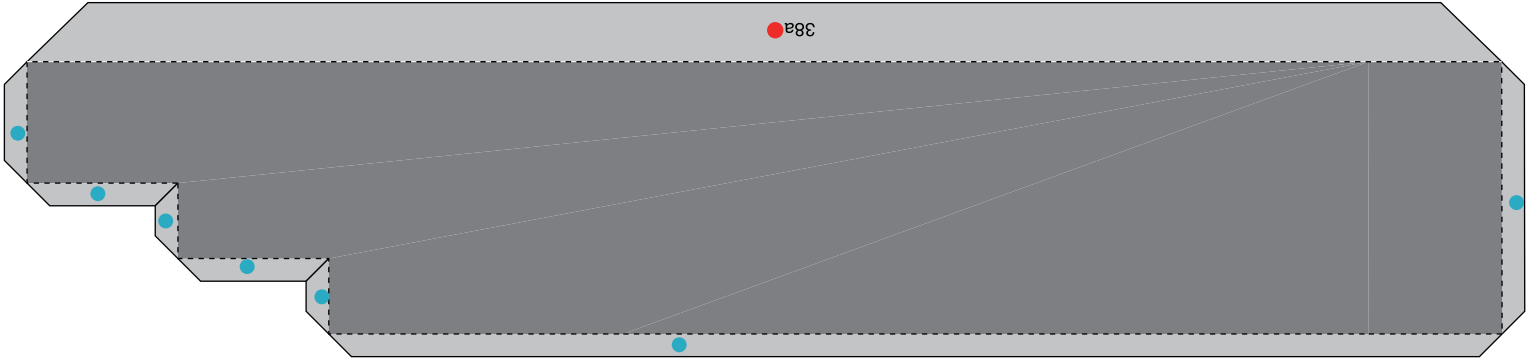
Canon ® is a registered trademark of Canon Inc. © Canon Inc. © Y.Watanabe



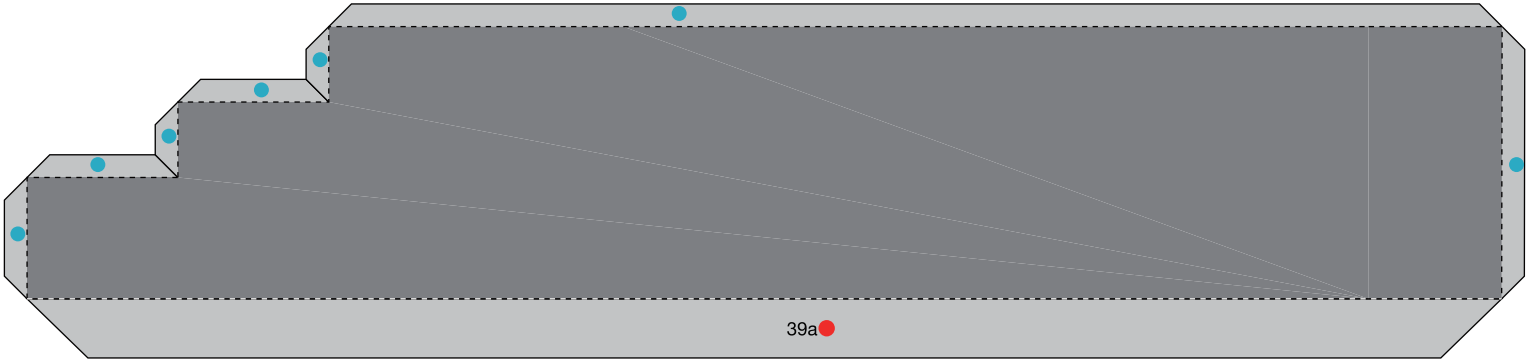
40



38



39



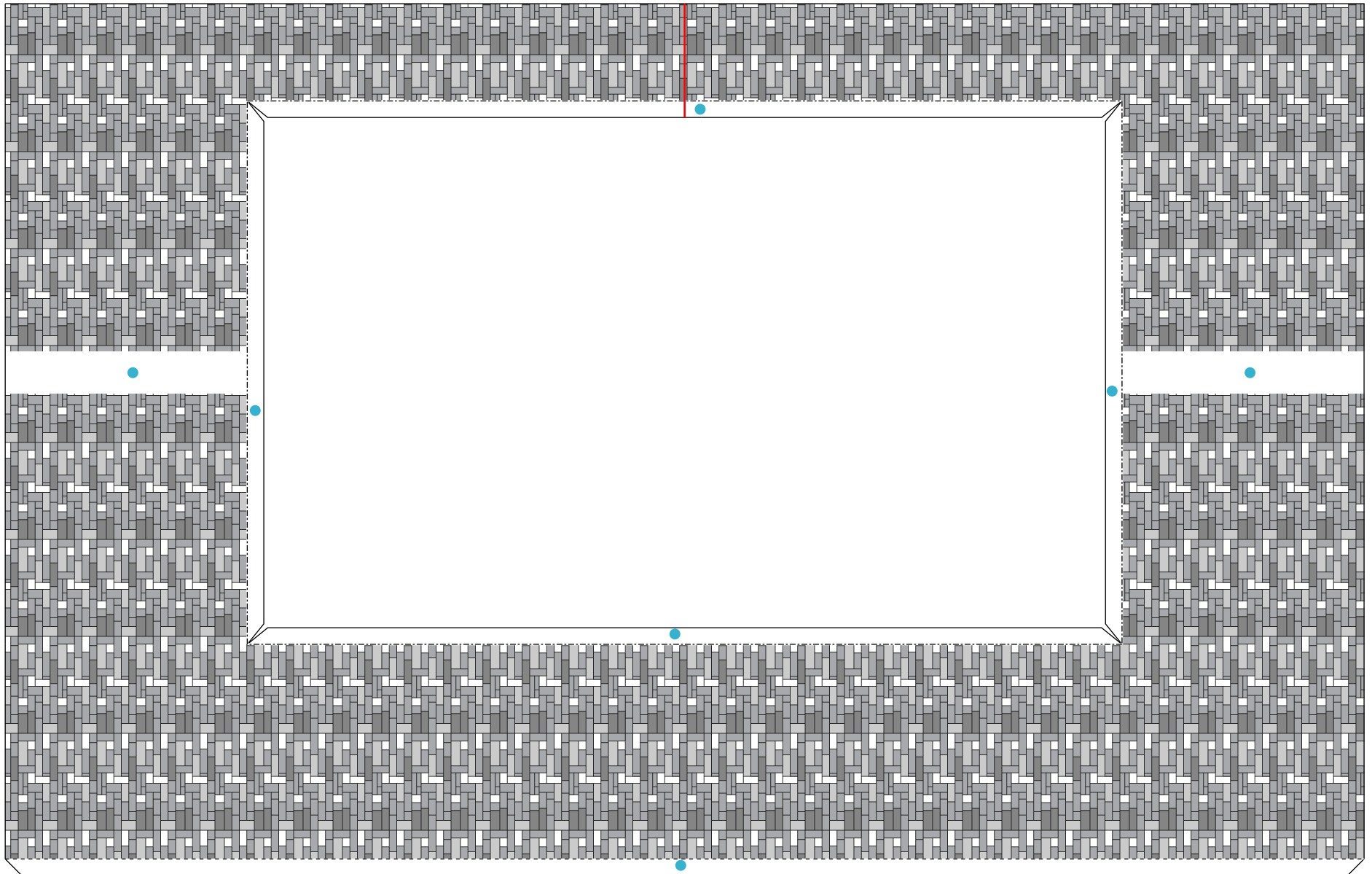
9



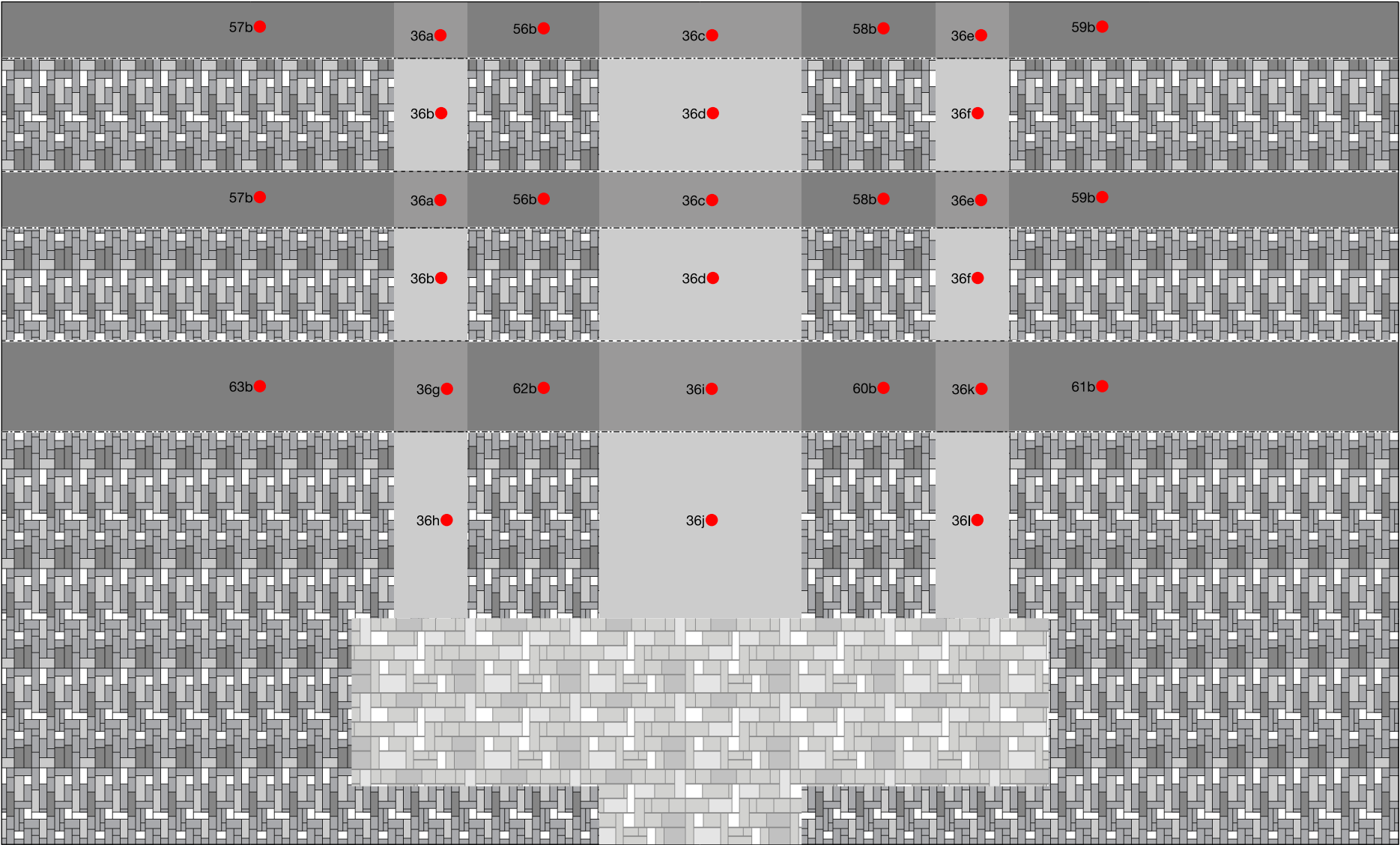
8



37

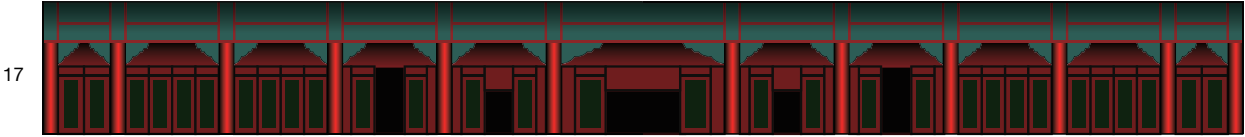
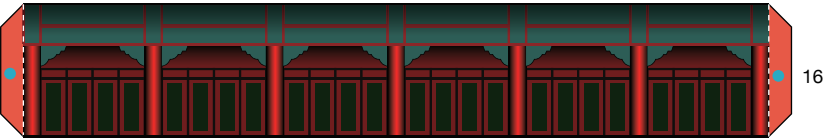
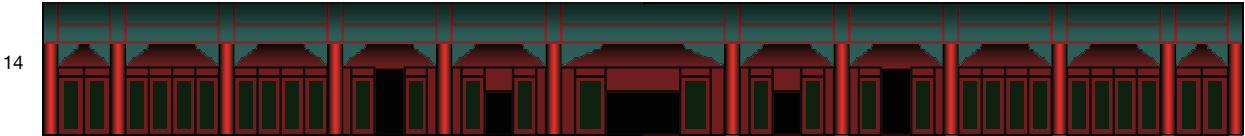


36



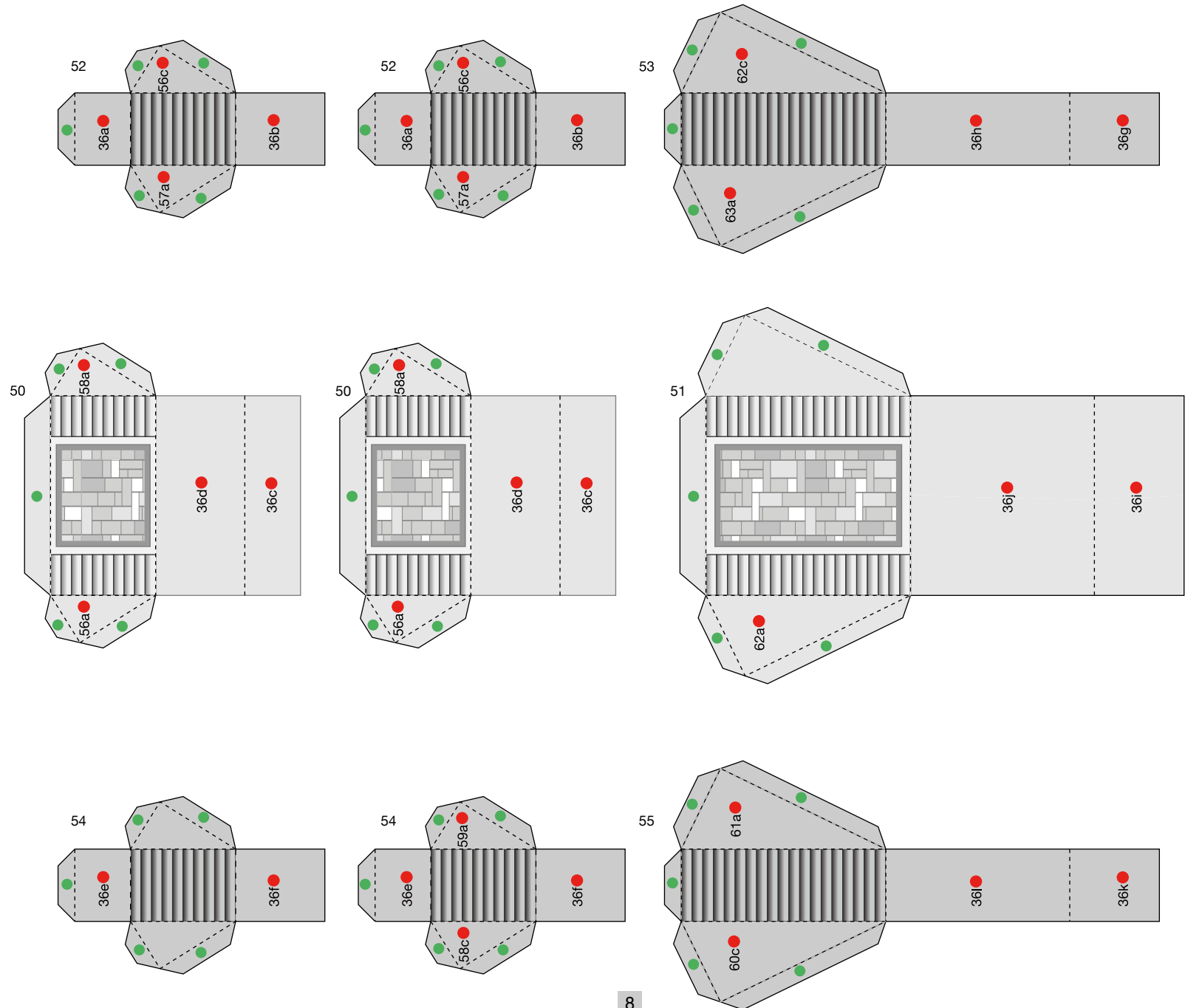
Forbidden City, China: Pattern

Canon® is a registered trademark of Canon Inc. © Canon Inc. © Y.Watanabe



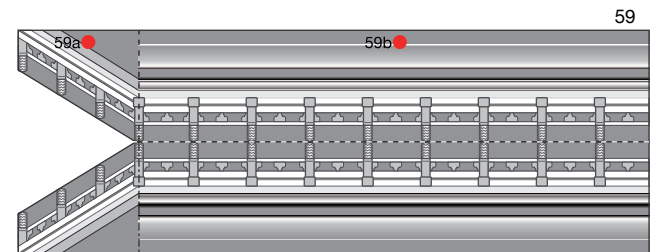
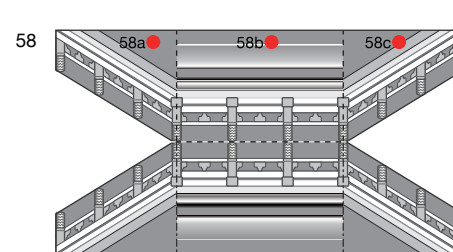
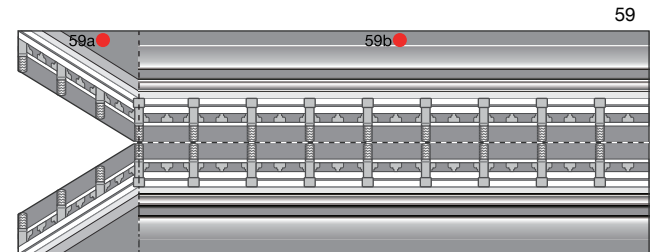
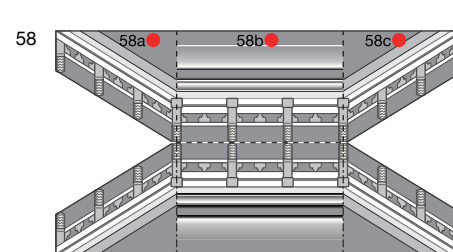
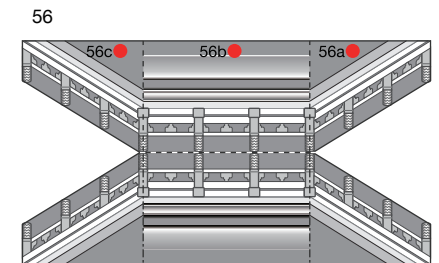
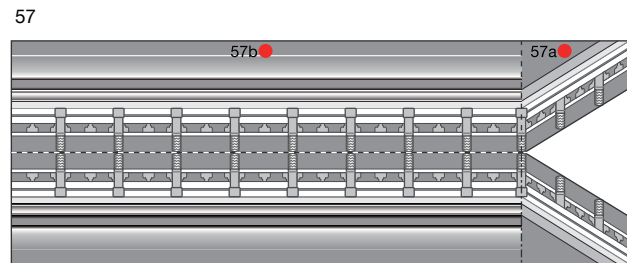
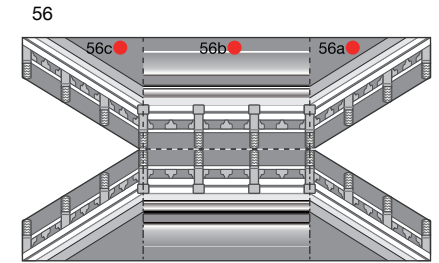
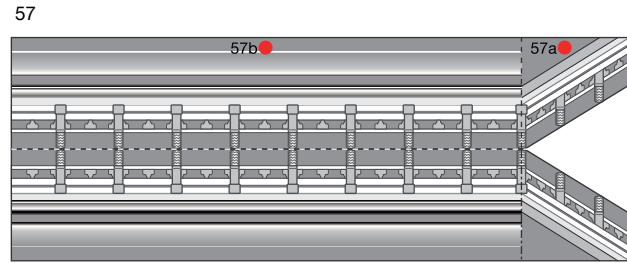
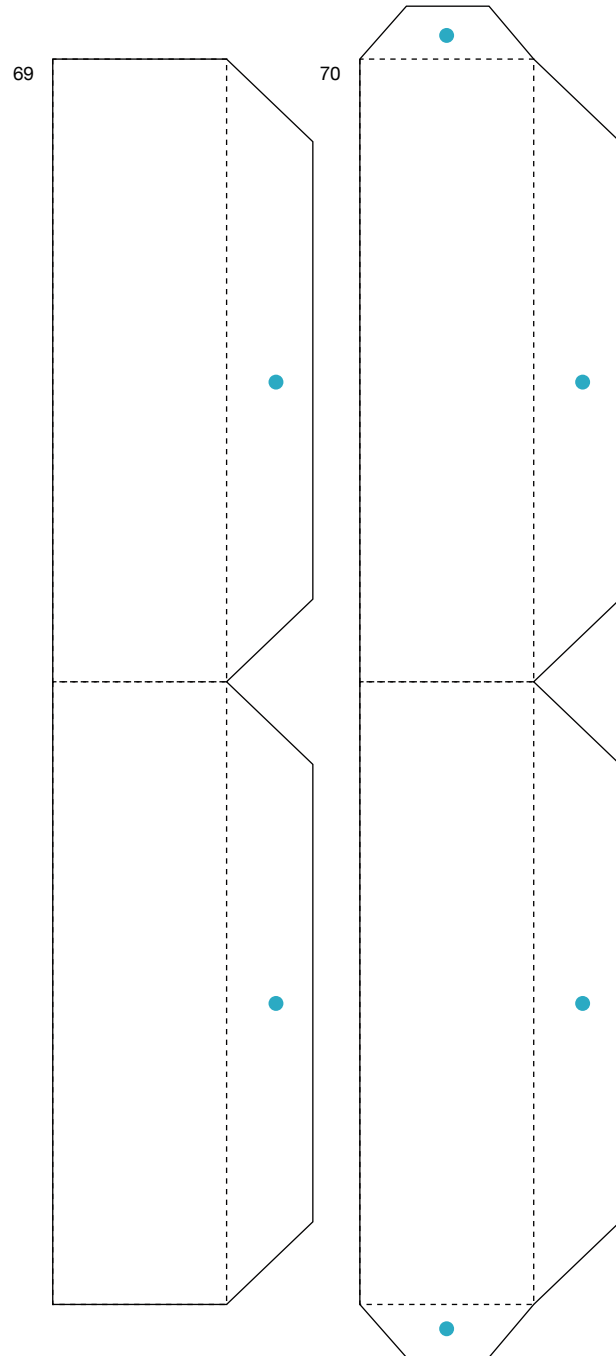
Forbidden City, China: Pattern

Canon ® is a registered trademark of Canon Inc. © Canon Inc. © Y.Watanabe



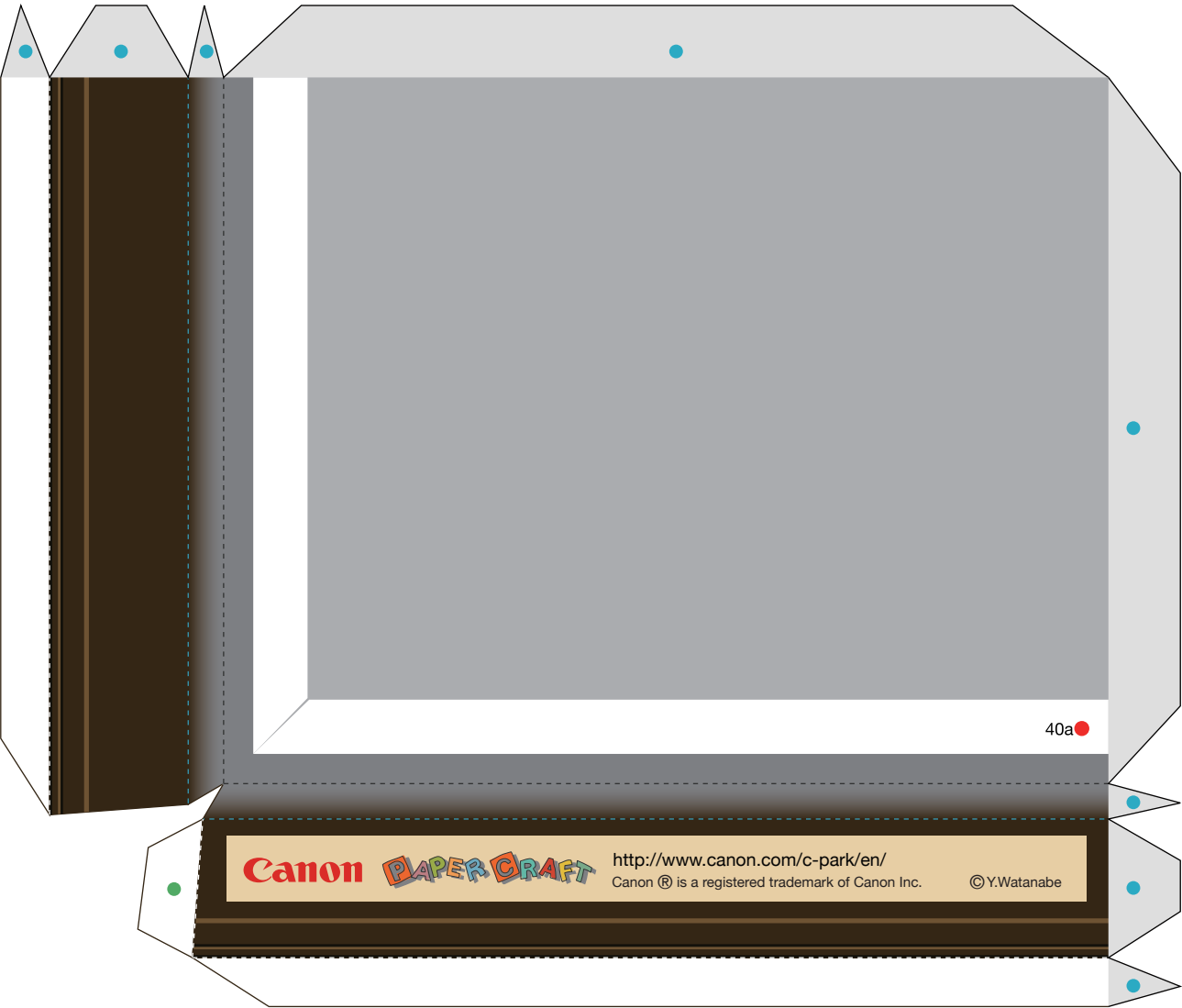
Forbidden City, China: Pattern

Canon ® is a registered trademark of Canon Inc. © Canon Inc. © Y.Watanabe

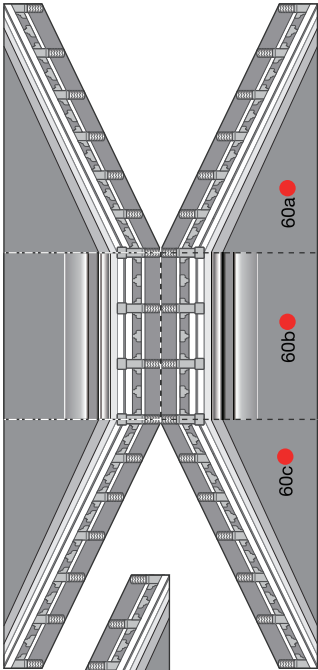




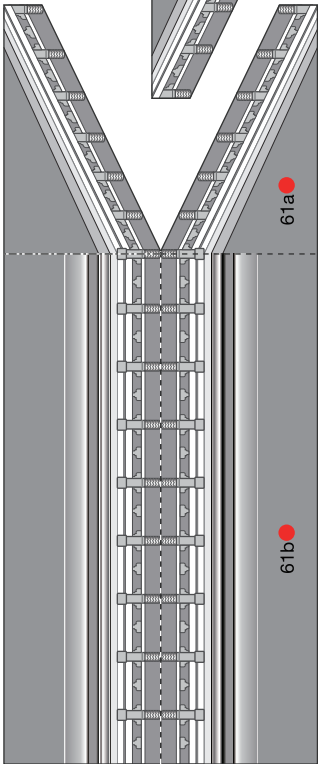
64



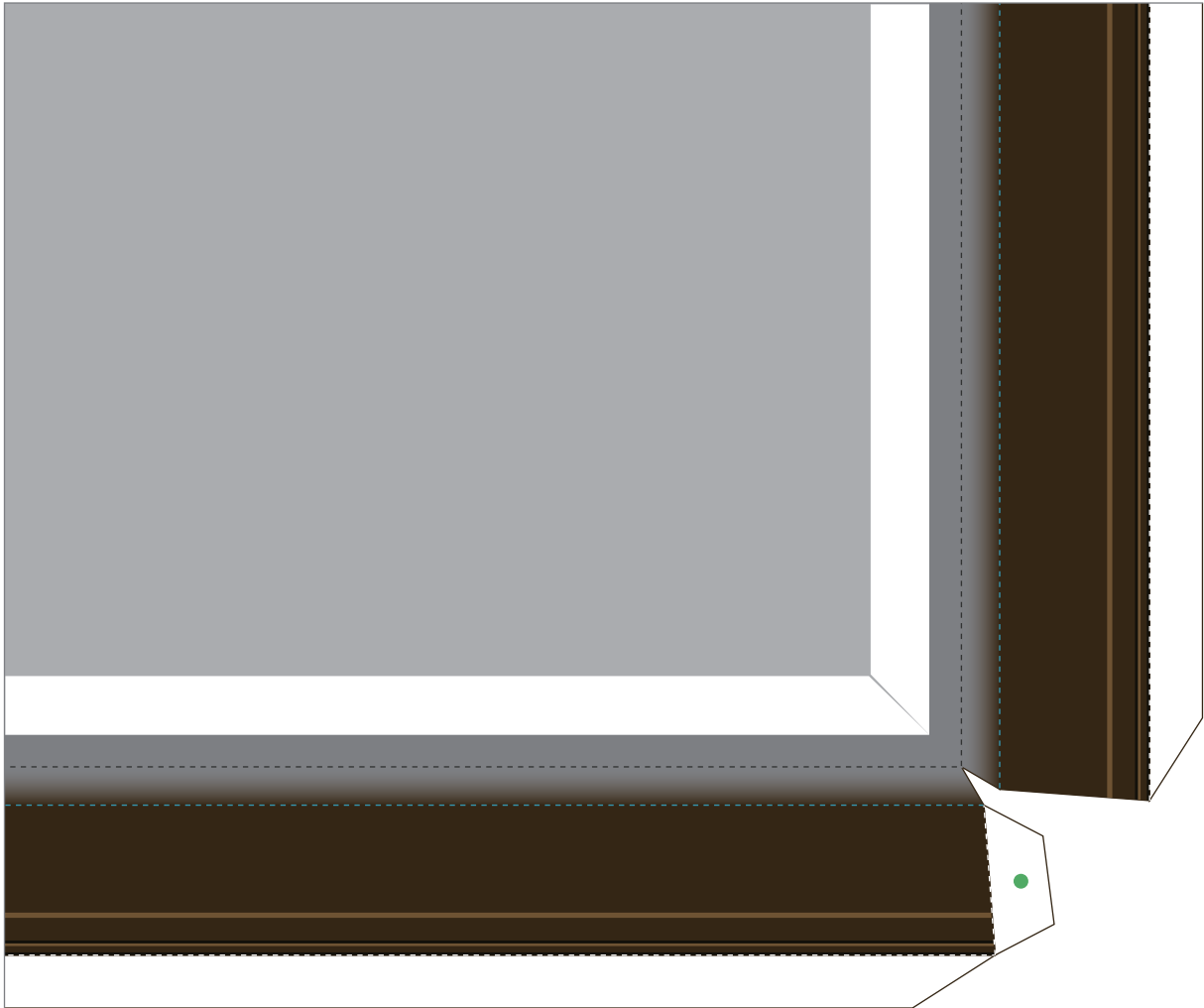
60



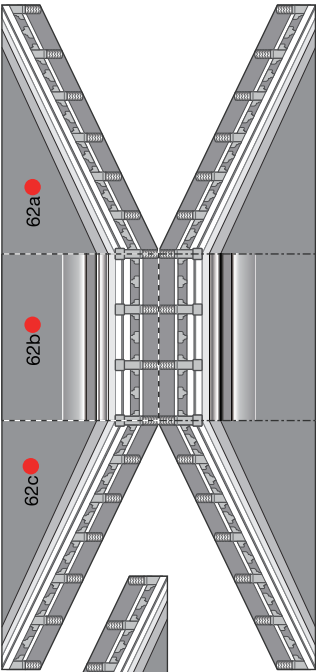
61



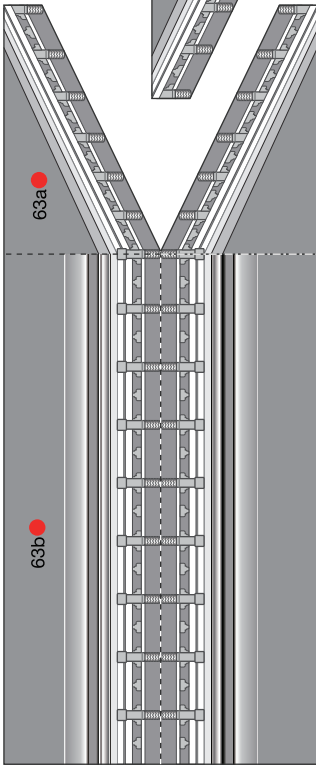
65



62



63



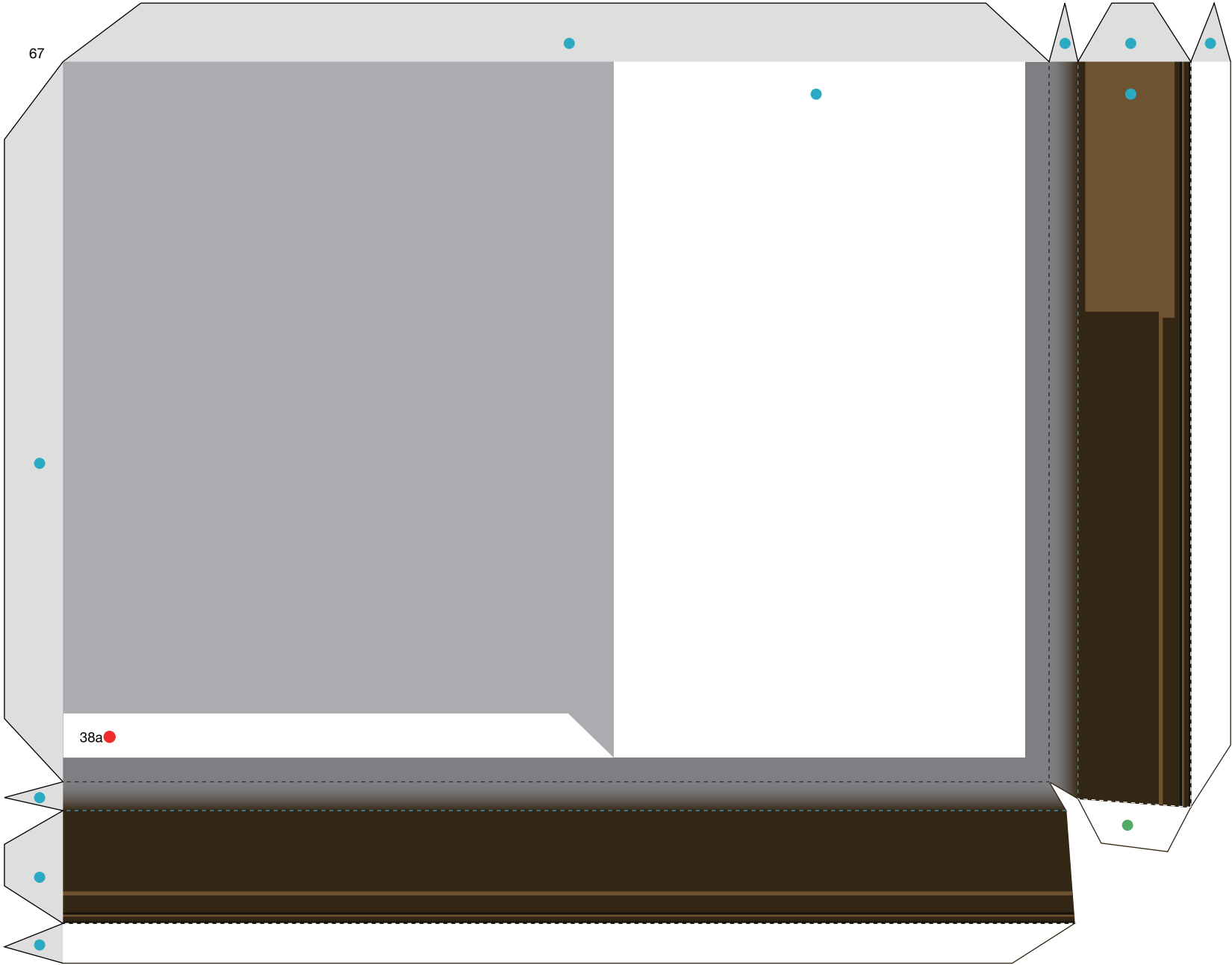
66



68



67



38a