

## CREATIVE PARK

<http://www.canon.com/c-park/>



Left lateral

View of completed model

### Angkor Wat, Cambodia

This is one of the historical relics of Angkor in Cambodia and is said to be a typical Khmer architecture. It is considered that King Suryavarman the Second of the Angkor Dynasty began the construction in the early 12th century, and it took around 30 years to complete the presently remaining structures. It consists of 540m long west approach, triple cloisters and 5 spires surrounding the main shrine with a 65m high central spire. It is believed that it was originally constructed as a Hindu temple, and King Sota in later period converted it to a Buddhist temple. It had been endangered to total devastation by destruction and pillage during the civil war in Cambodia, but it was registered as UNESCO world heritage in 1992, and restoration work started.

\* This model was designed for Papercraft and may differ from the original in some respects.

■ Parts list (pattern) : Twenty five A4 sheets (No. 1 to No. 25)

■ No. of Parts : 390

\* Build the model by carefully reading the Assembly Instructions, in the parts sheet page order.



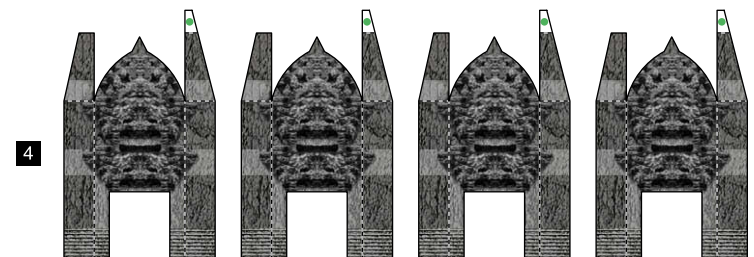
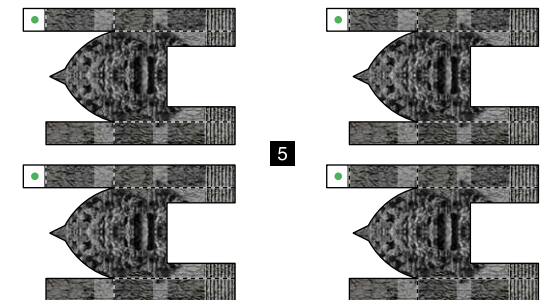
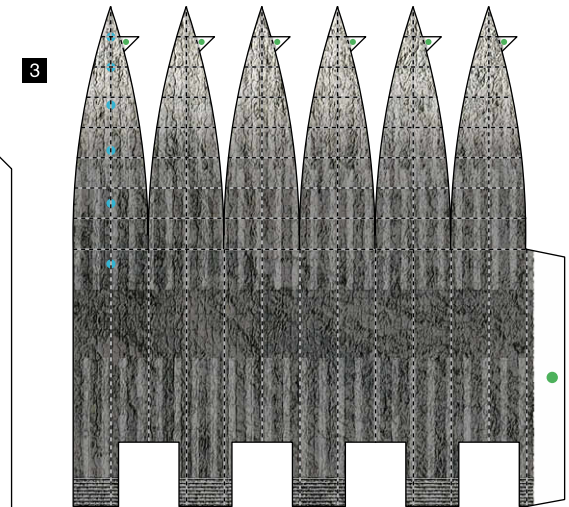
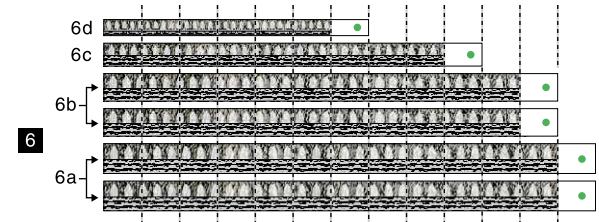
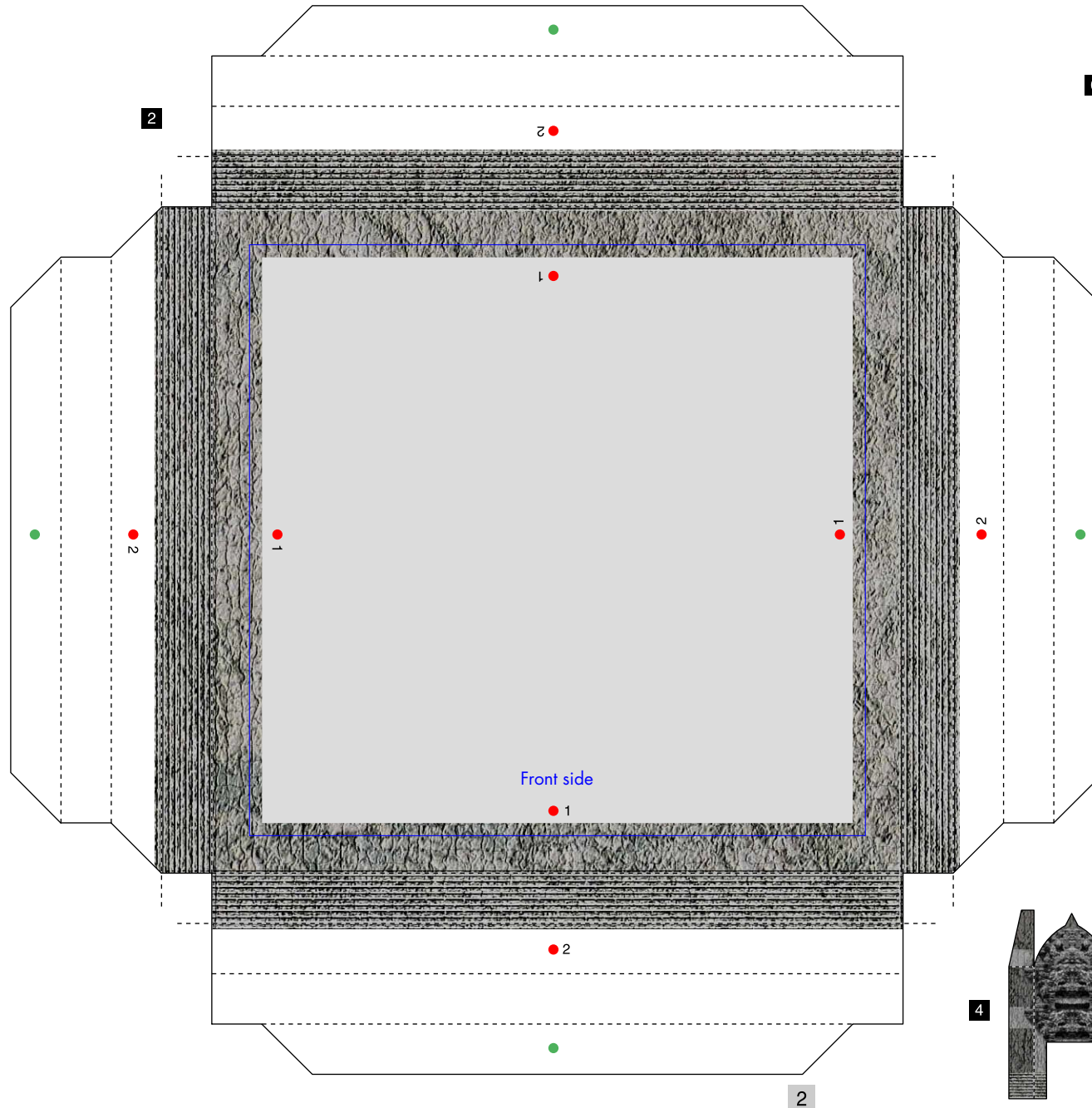
Mausoleum (Inside the third cloister)

# Angkor Wat, Cambodia : Pattern

©Canon Inc. ©Takahashi P.D./N.N.

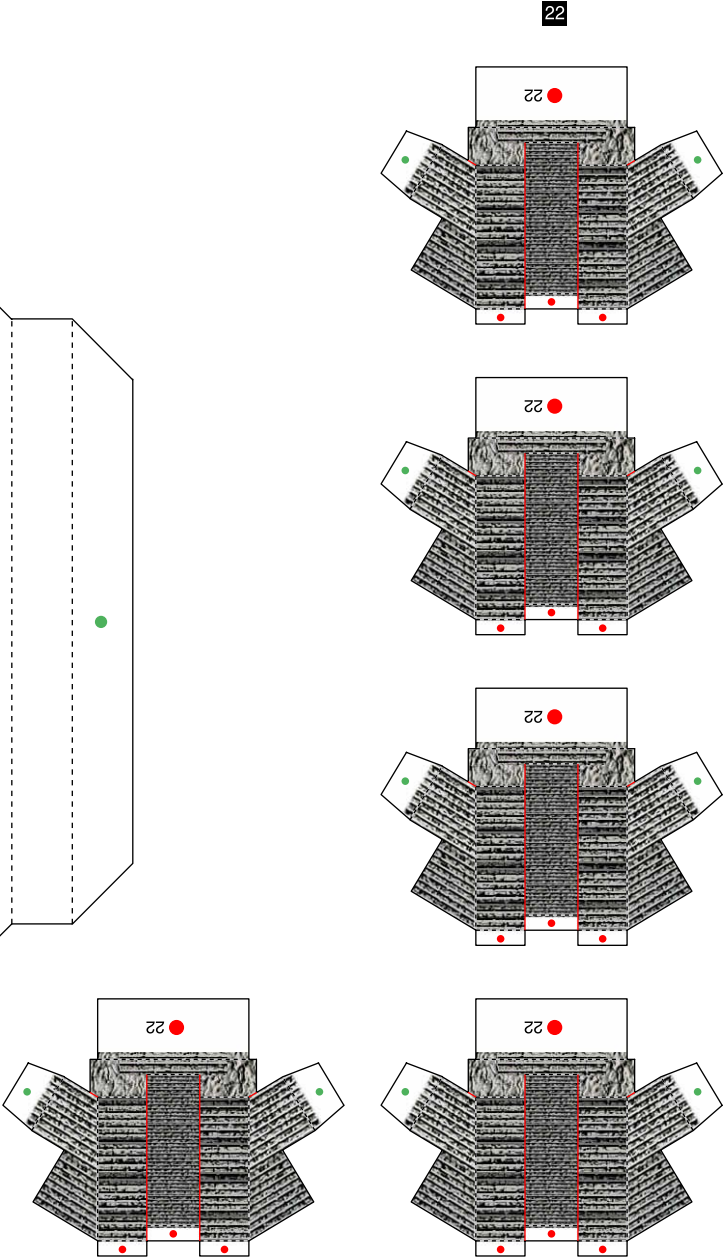
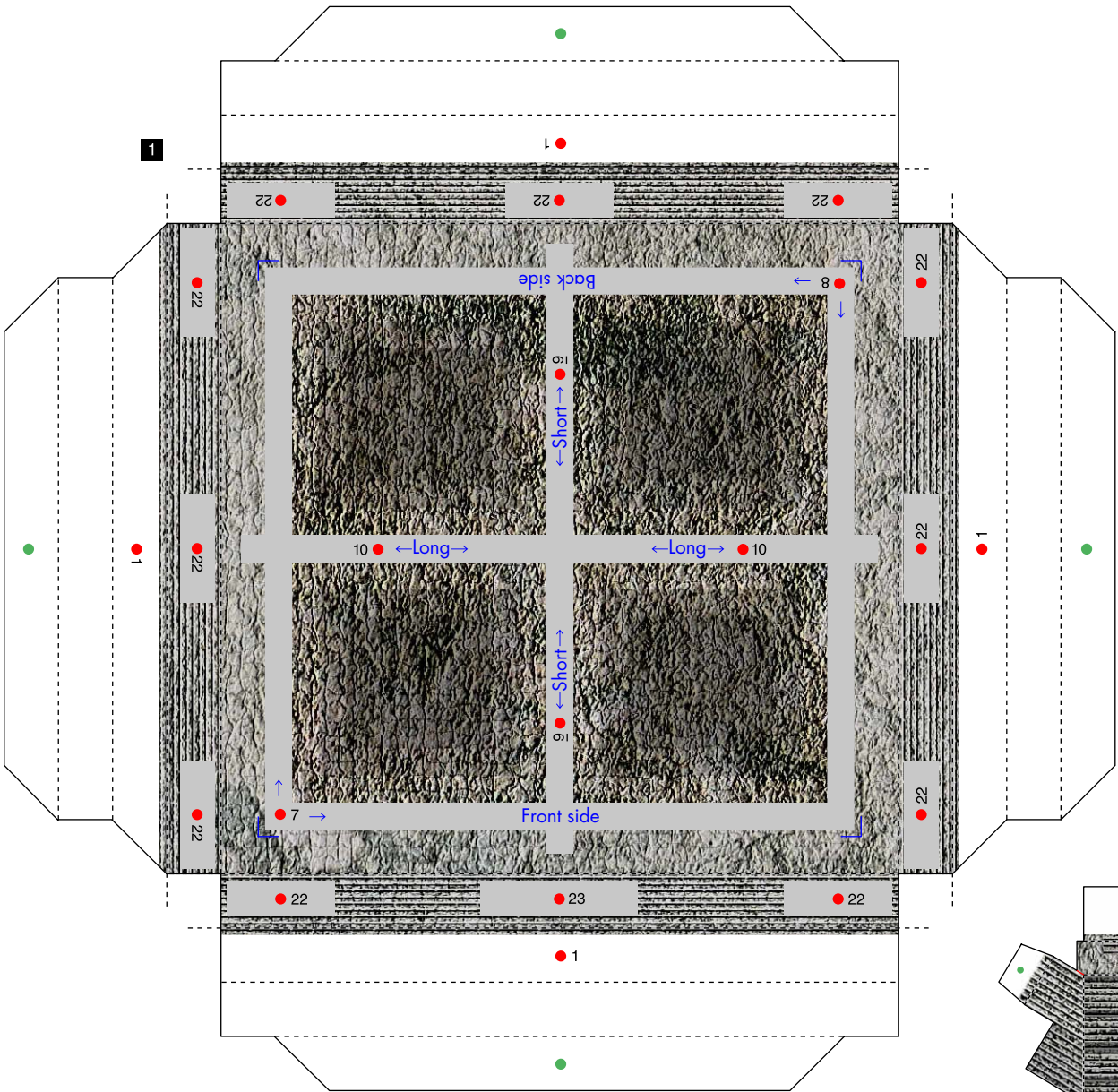
Canon

Mausoleum (Inside the third cloister)



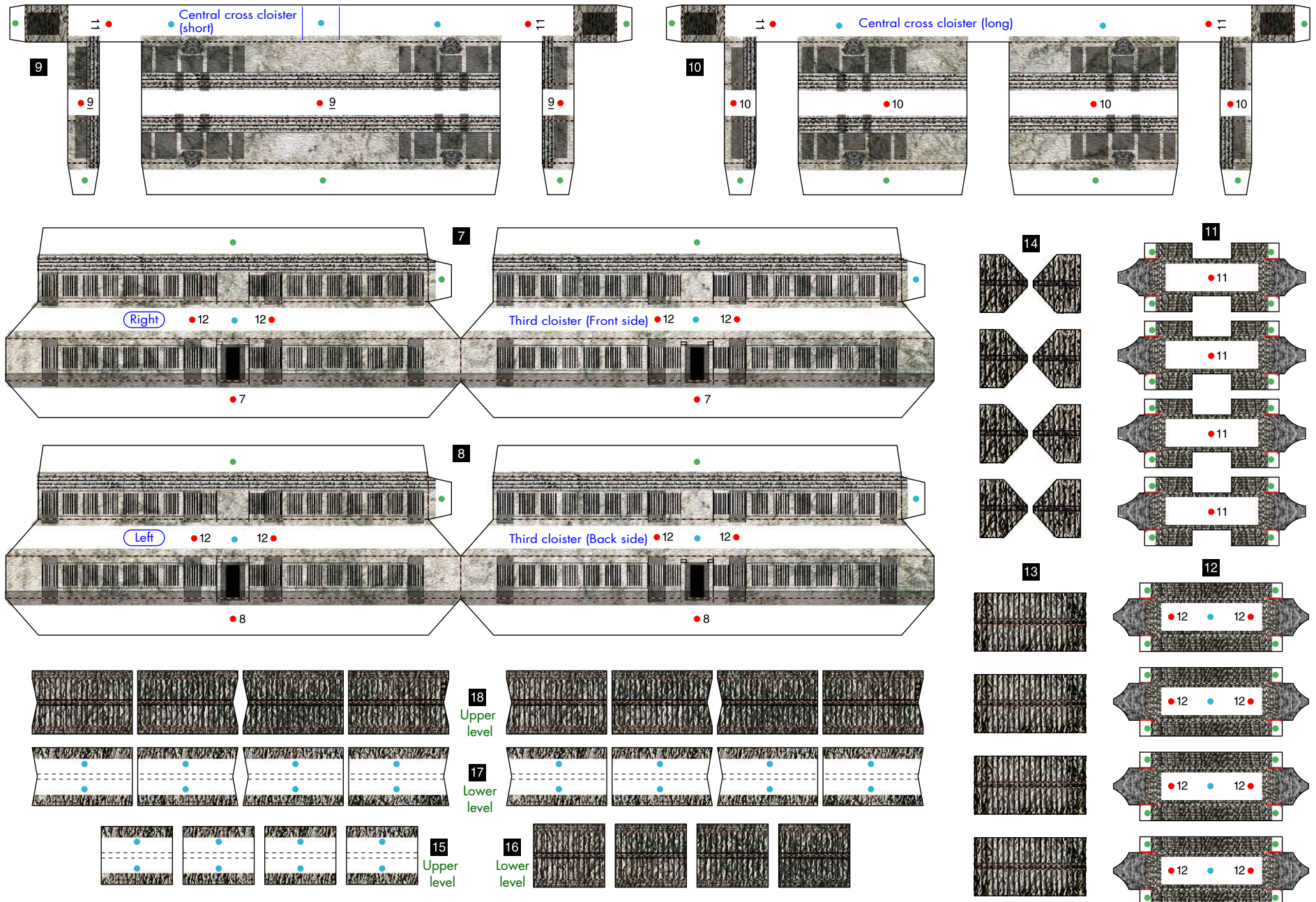


Mausoleum (Inside the third cloister)



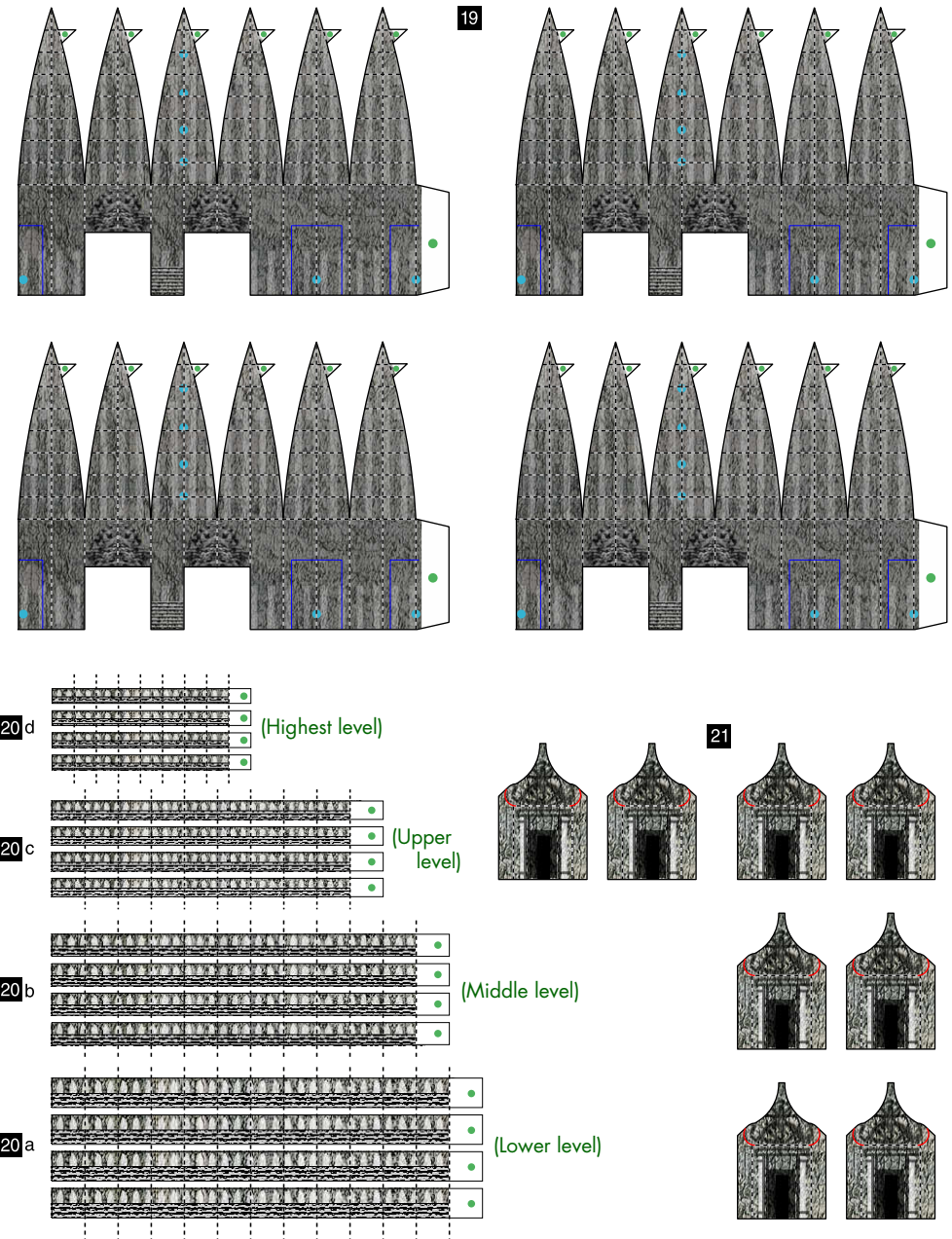
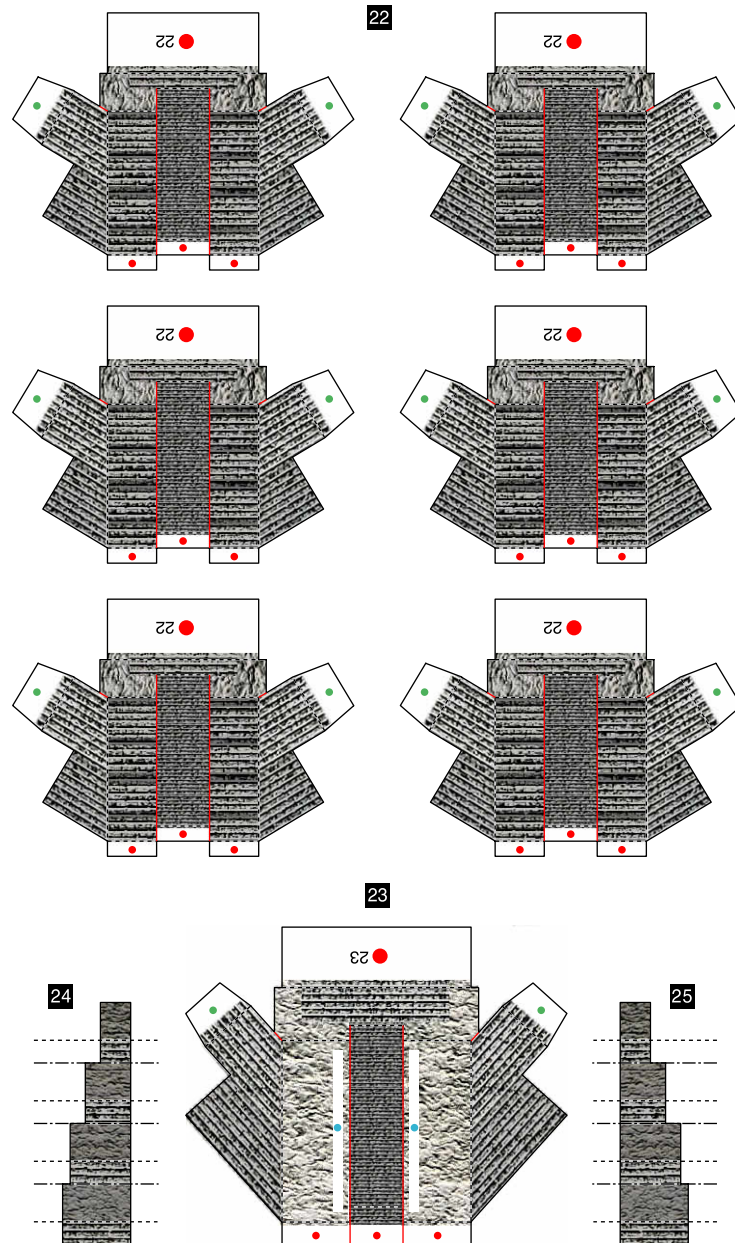


Mausoleum (Inside the third cloister) / central cross cloister



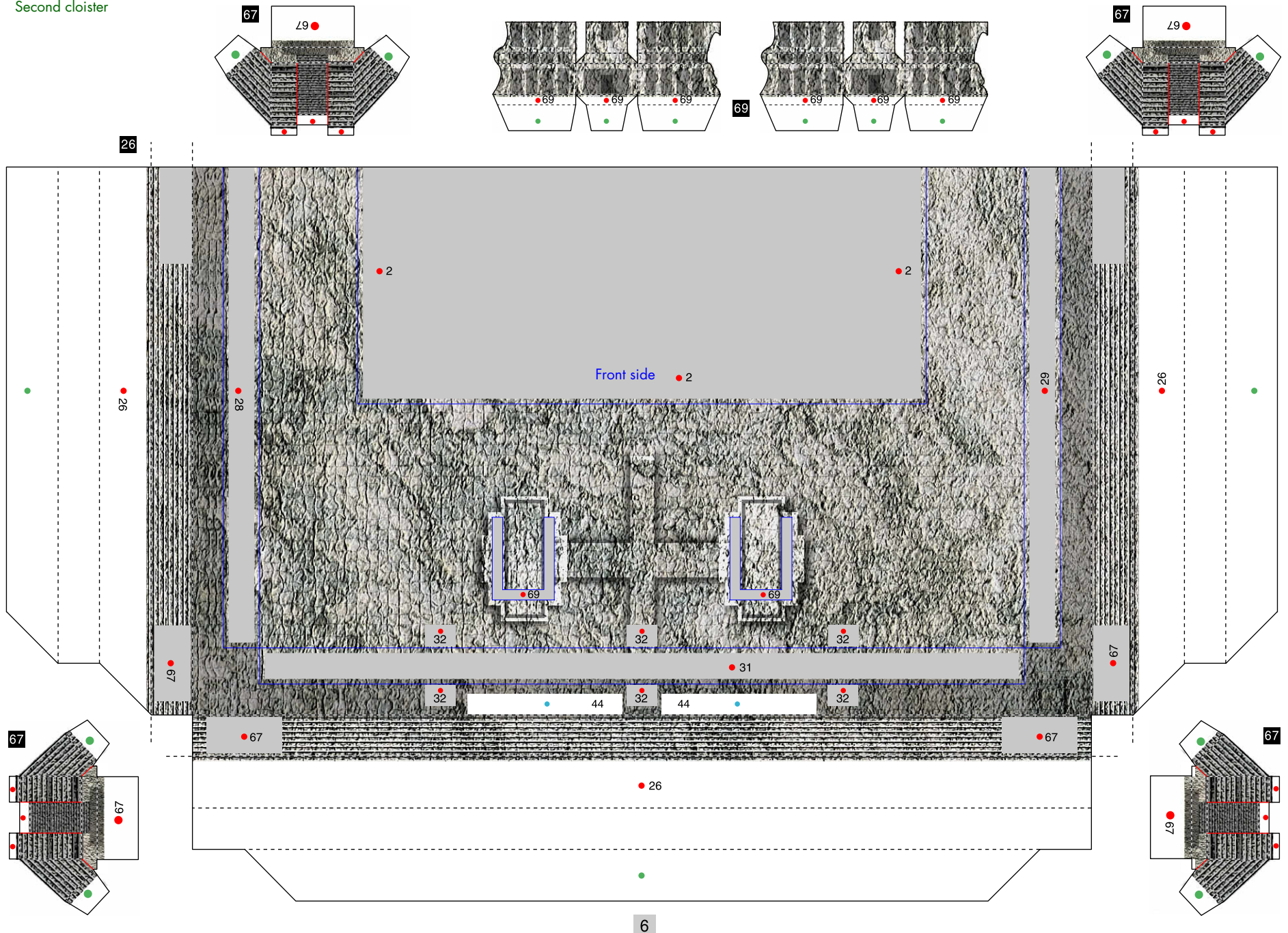


Mausoleum (Inside the third cloister)



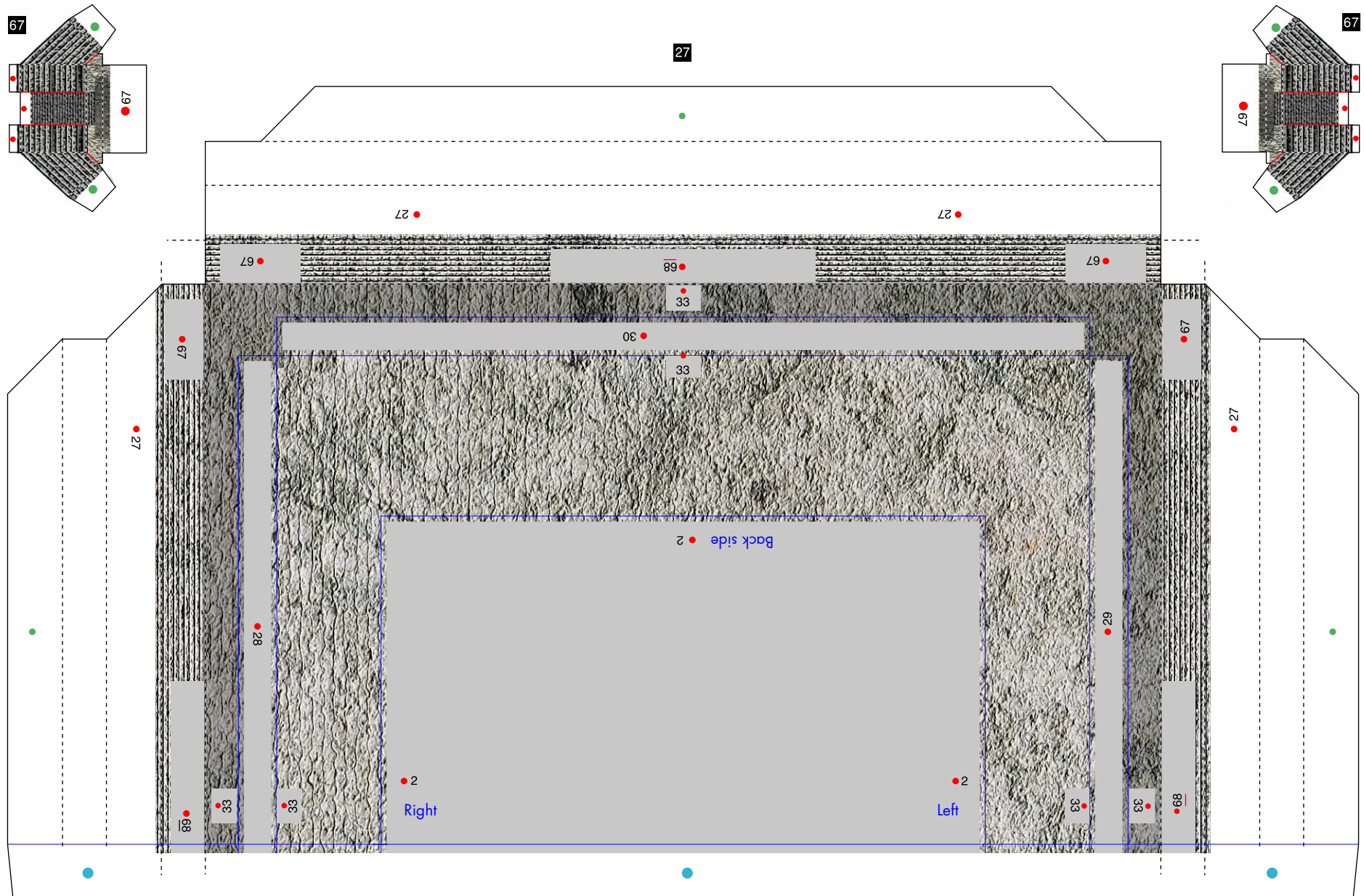


Second cloister



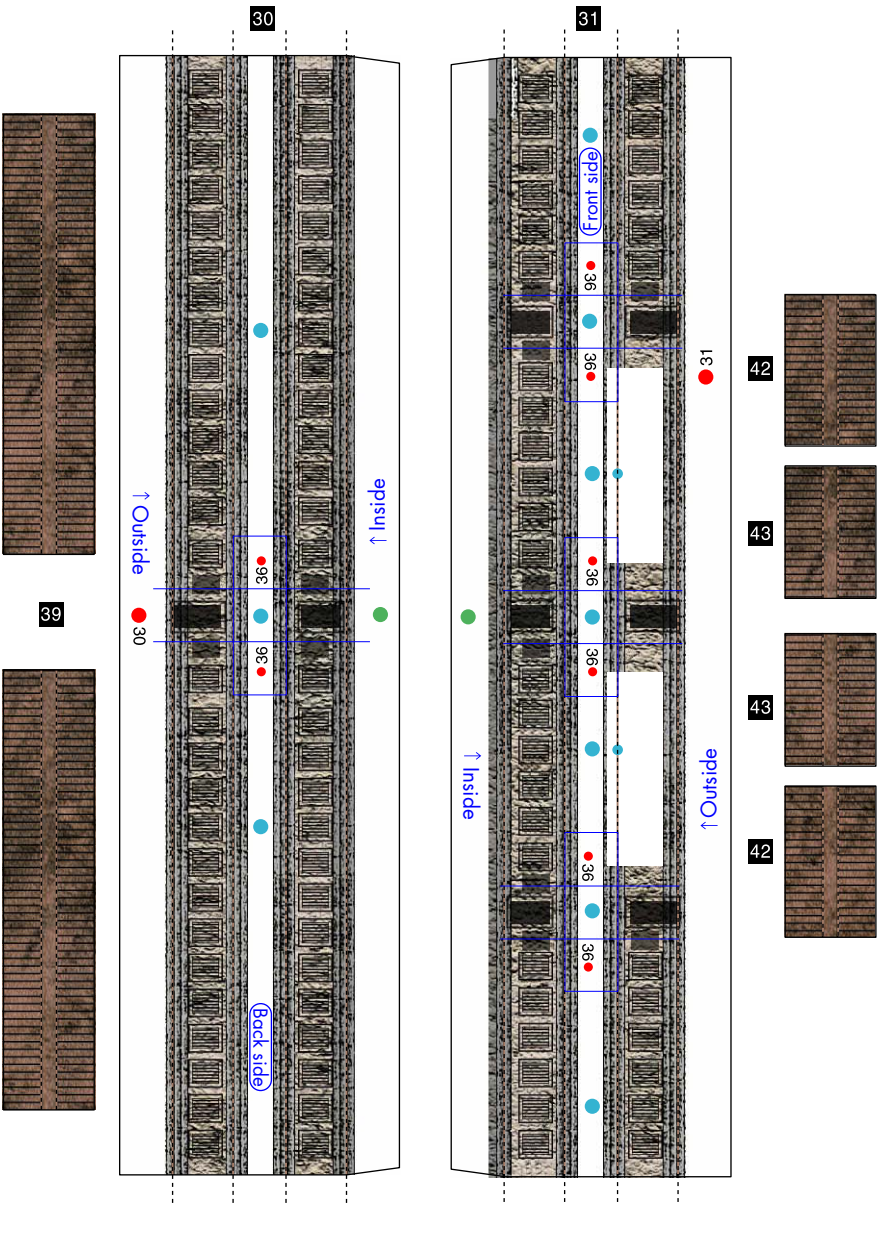


Second cloister

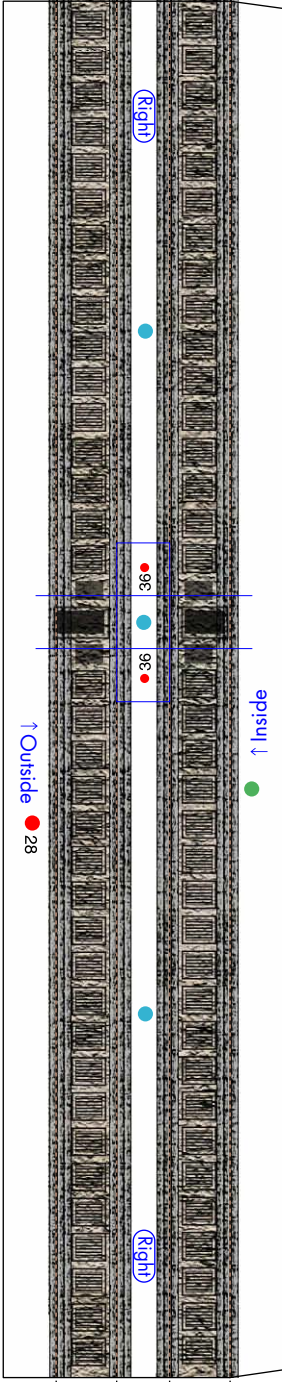




Second cloister



28



29

