

눈

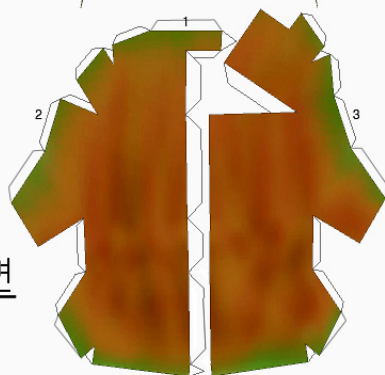


귀

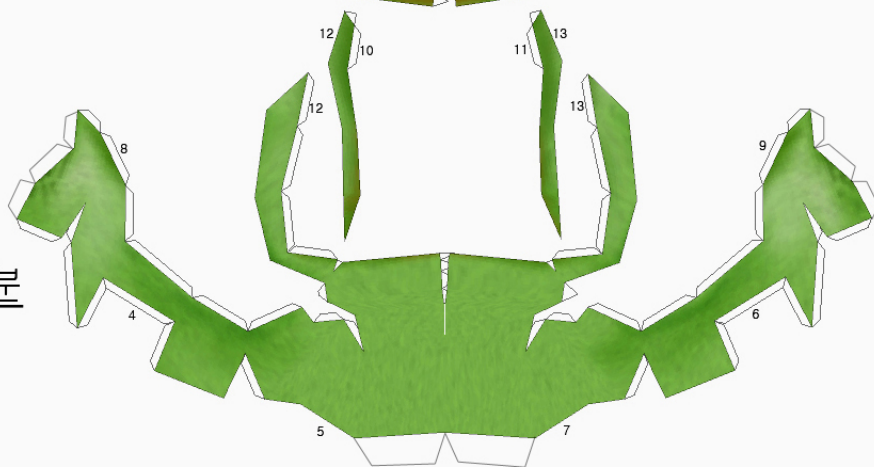


귀

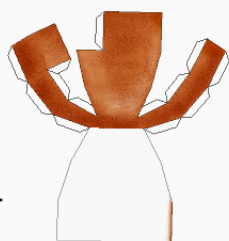
입안쪽면



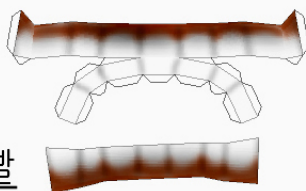
턱부분



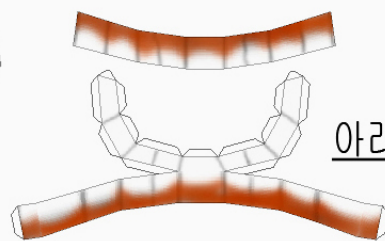
혀



윗이빨



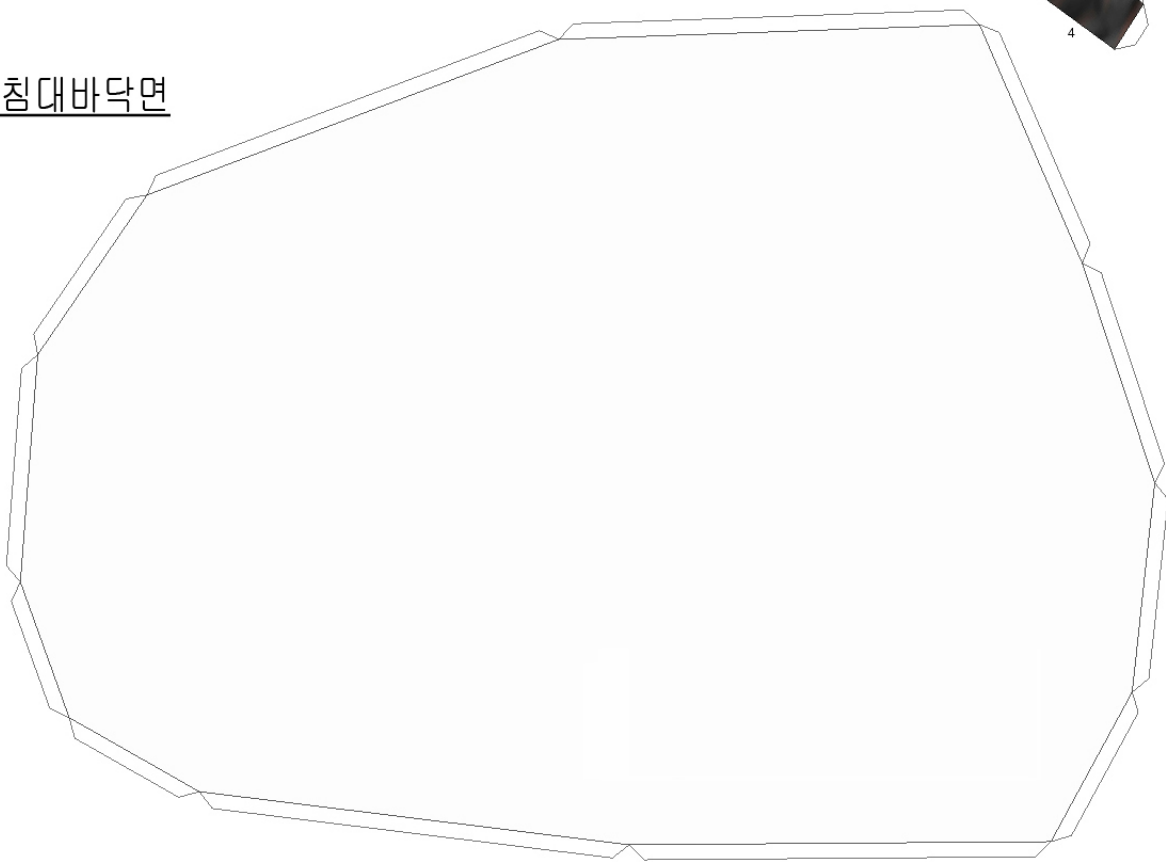
아래이빨



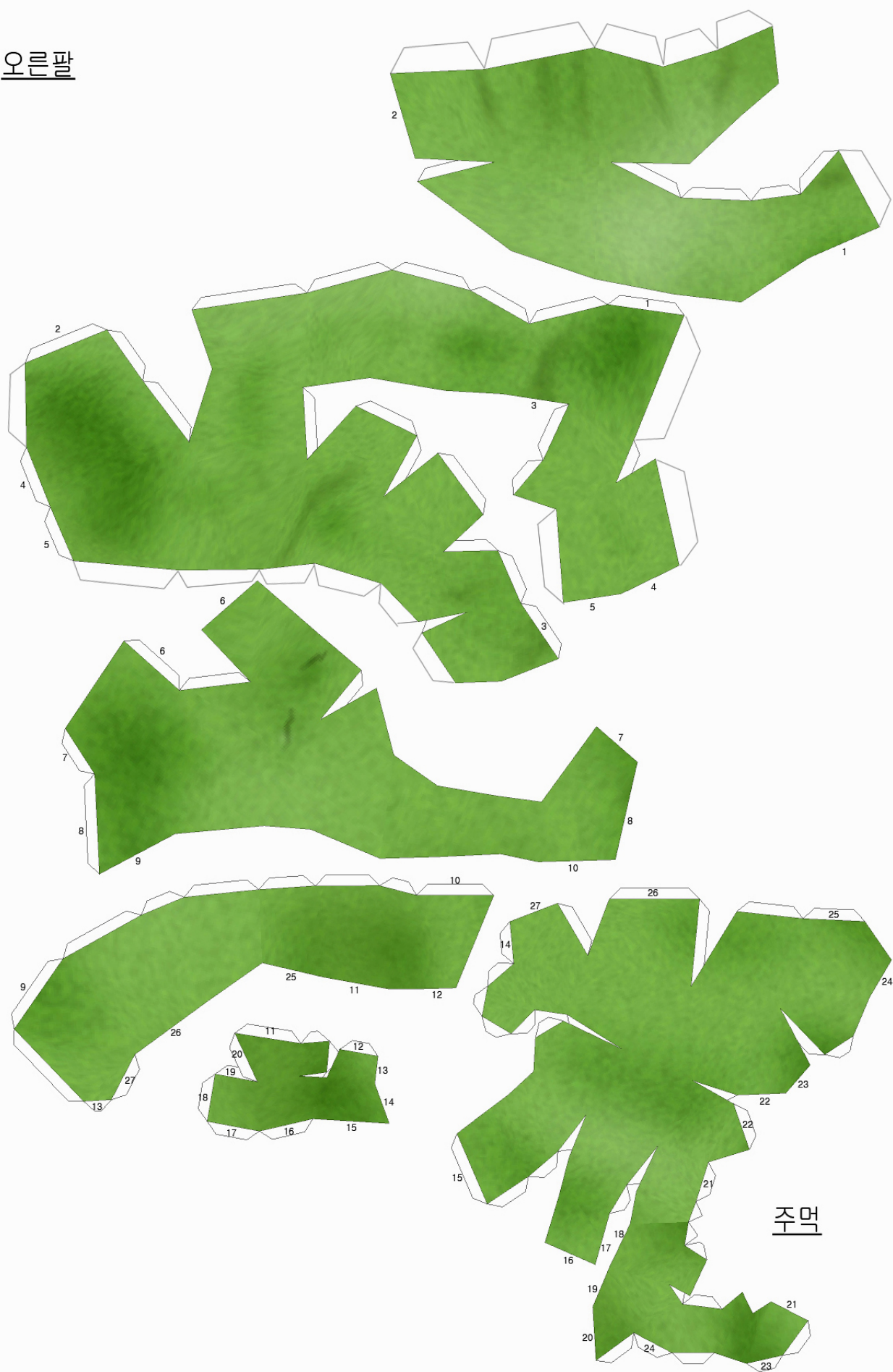
머리카락



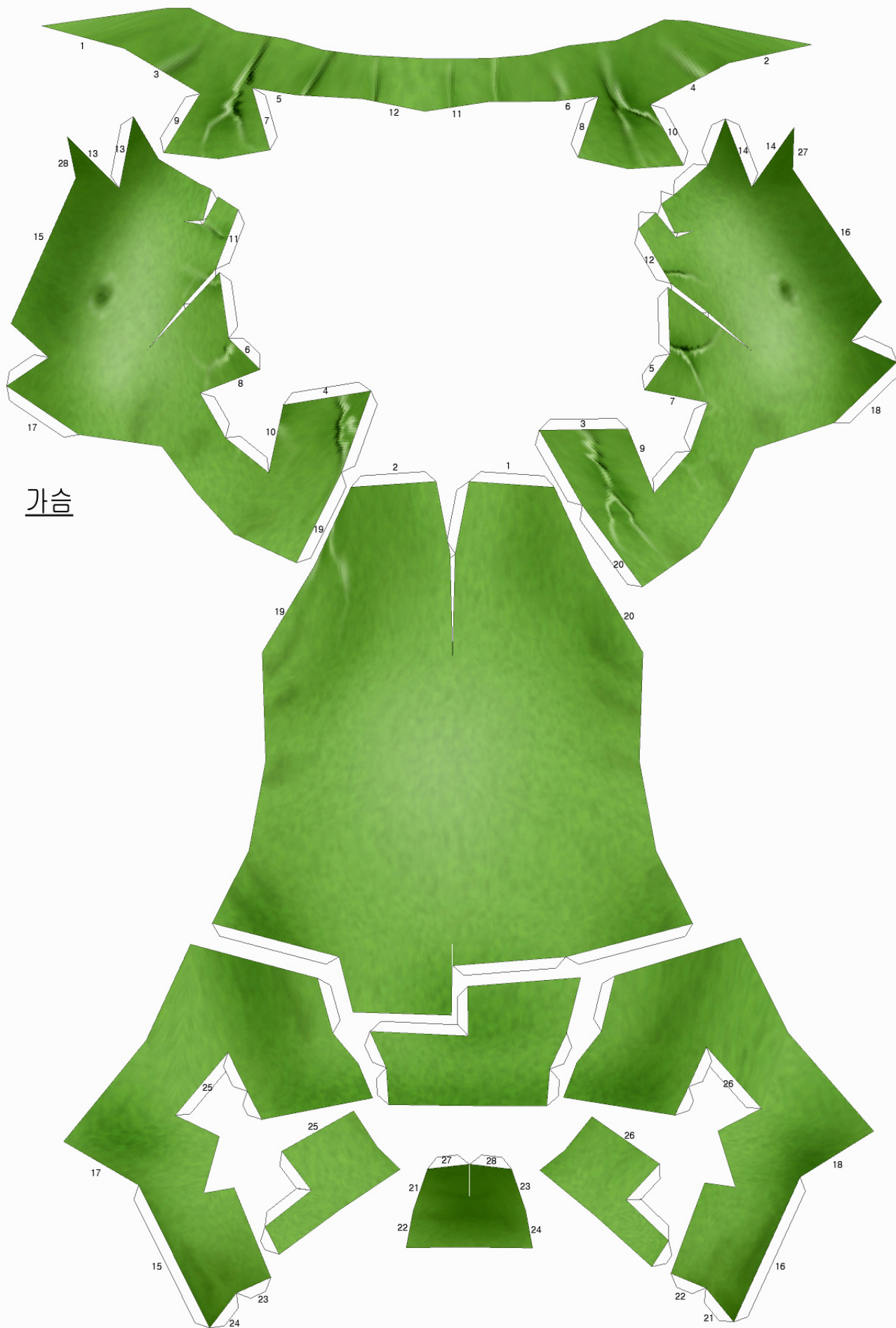
받침대바닥면



여러



주먹

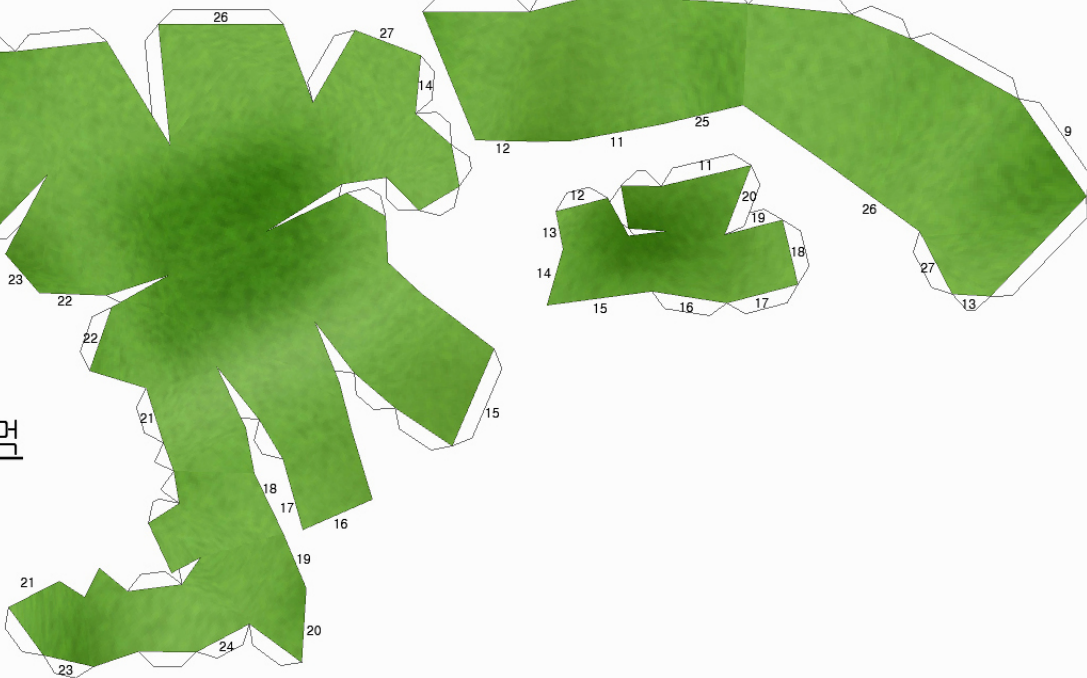


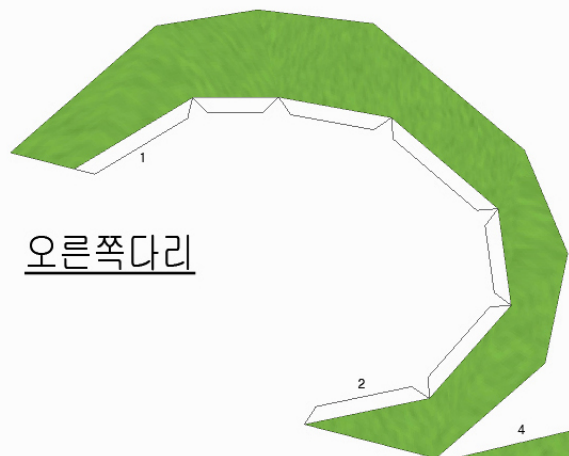
가슴

왼팔

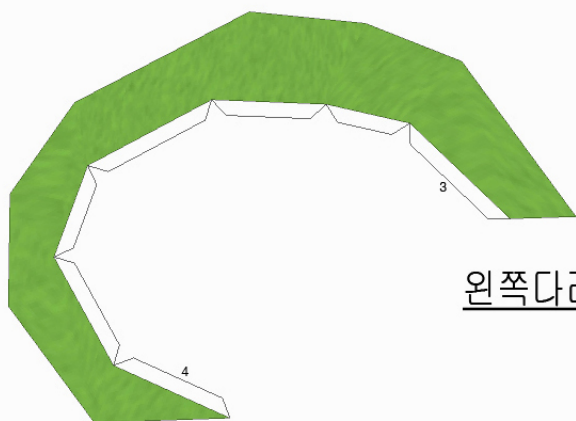


주먹

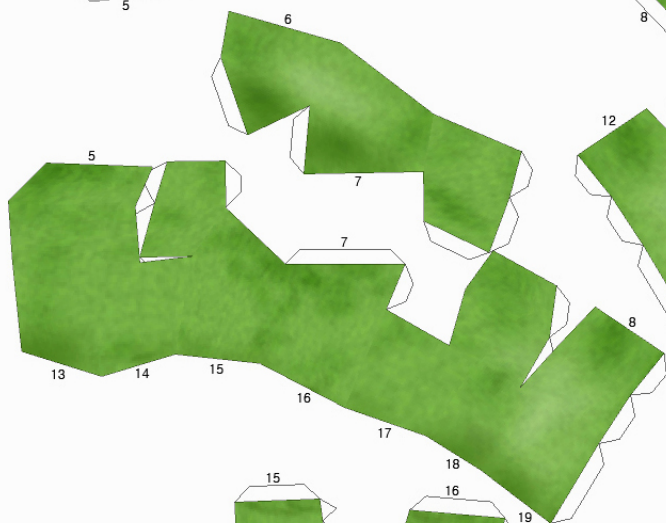
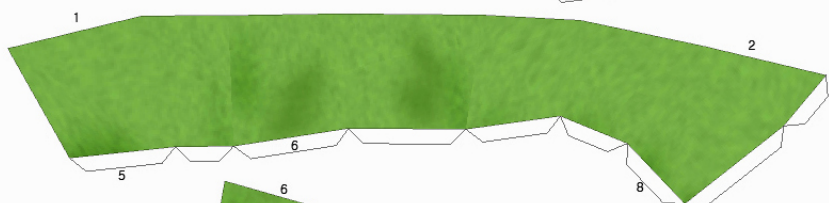
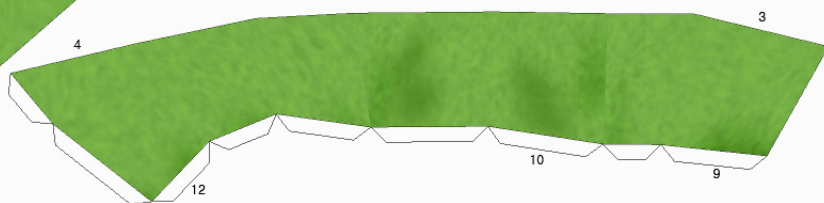




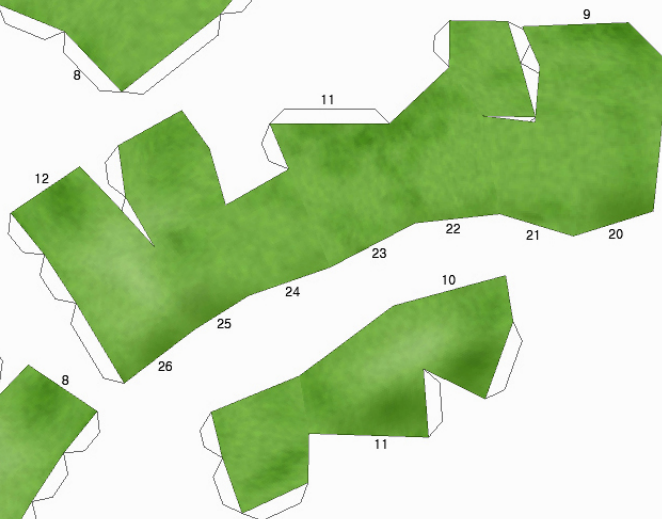
오른쪽다리



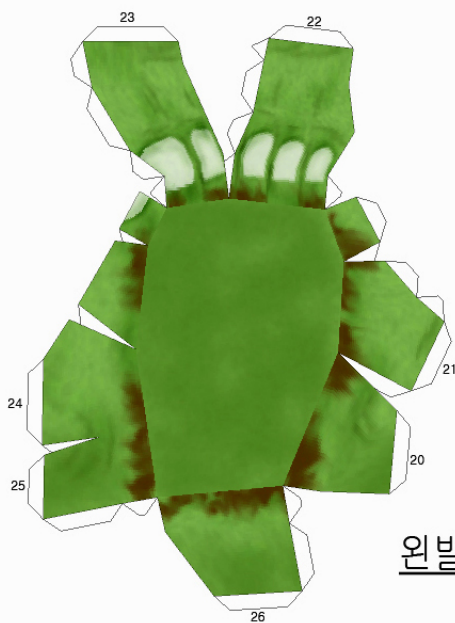
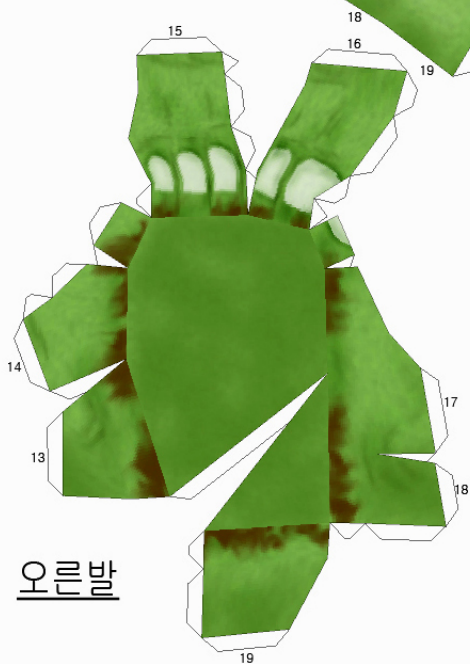
왼쪽다리



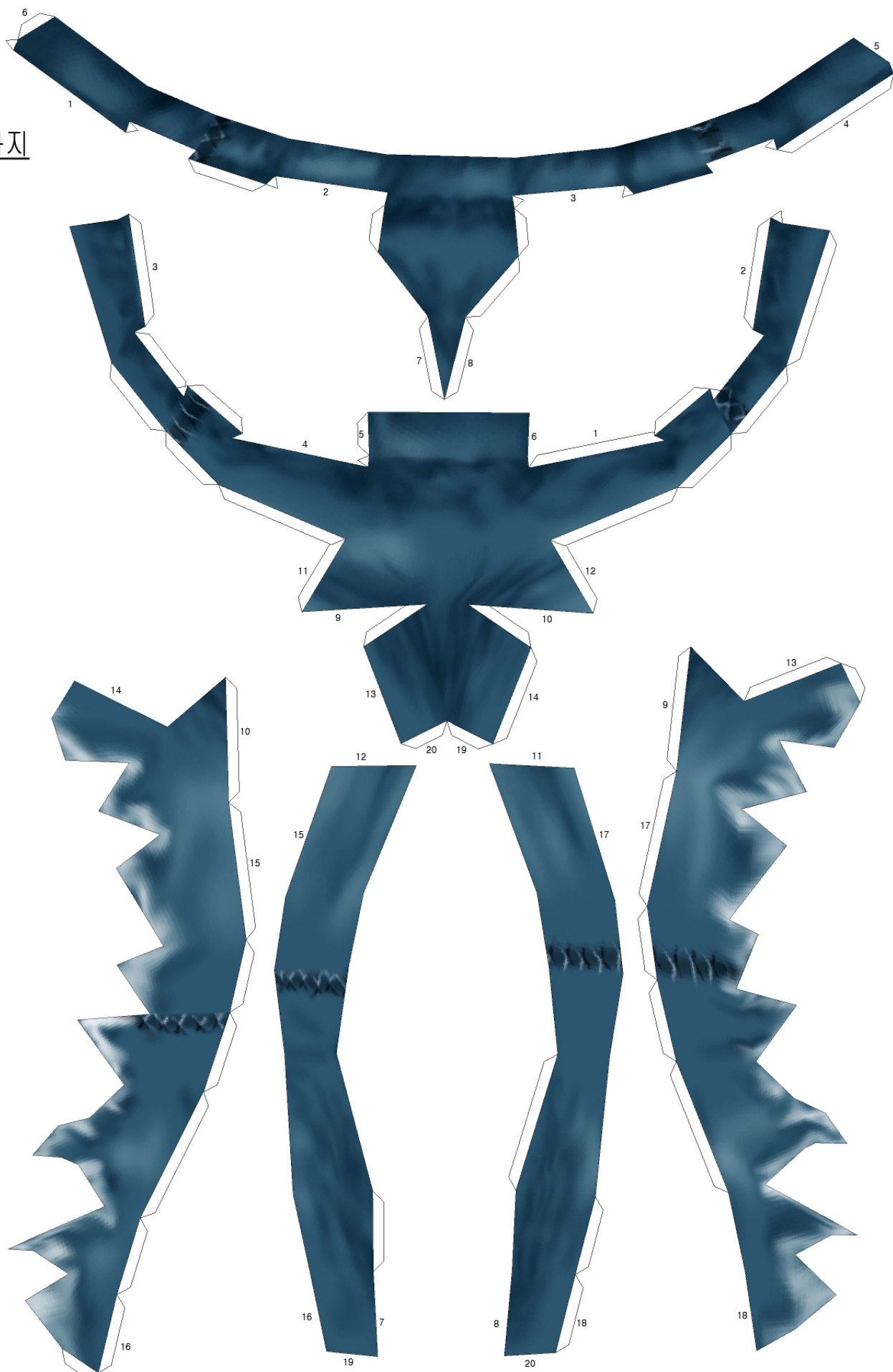
오른발



왼발



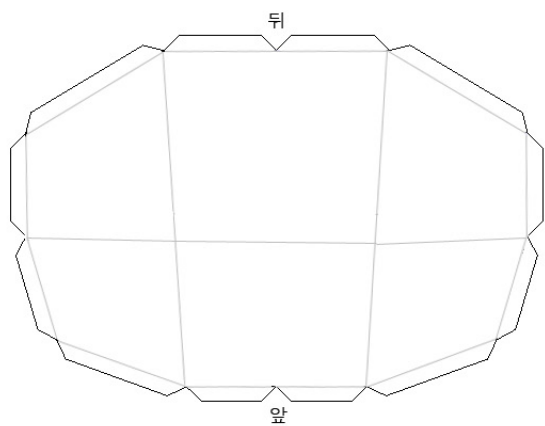
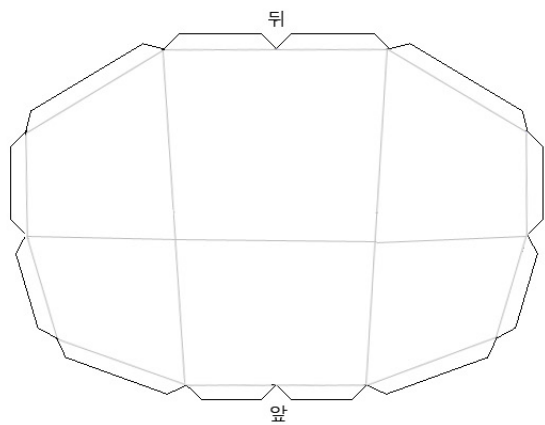
바지



받침대

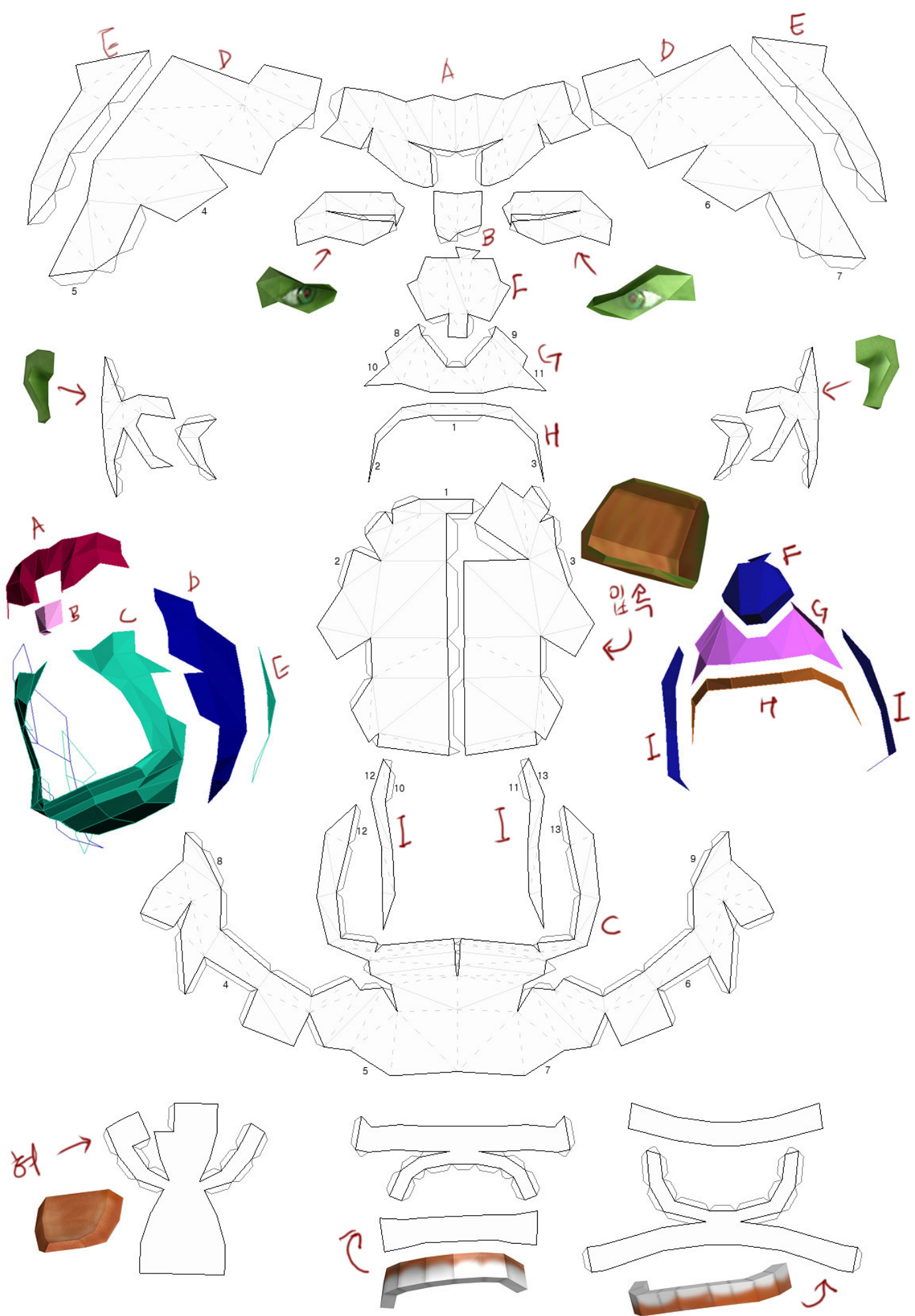


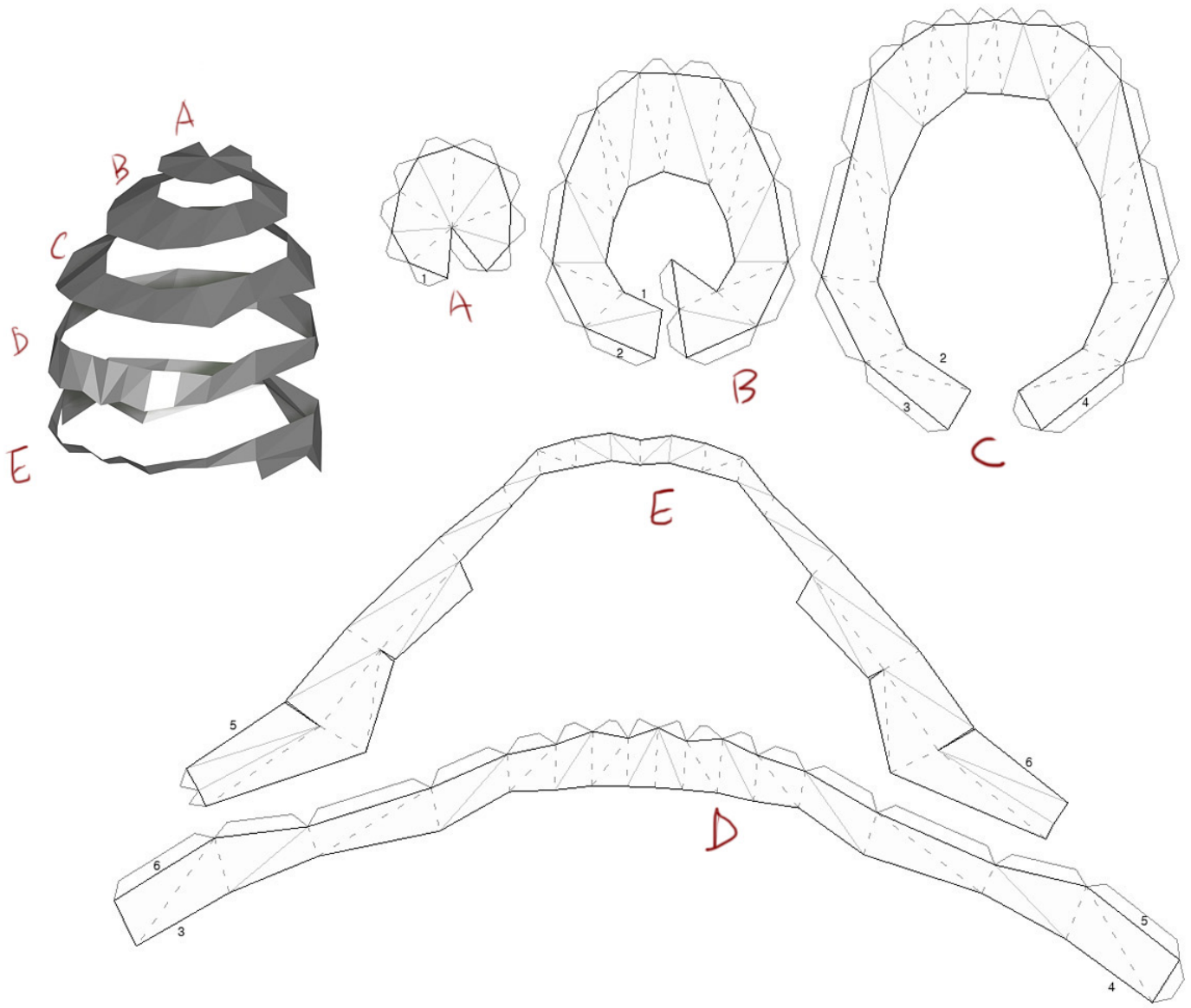
상체, 하체 접지면



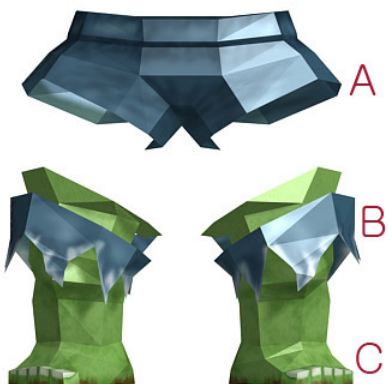


HULK by okpapa

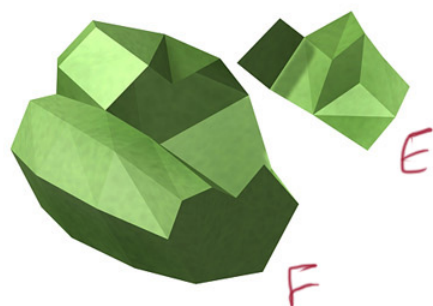
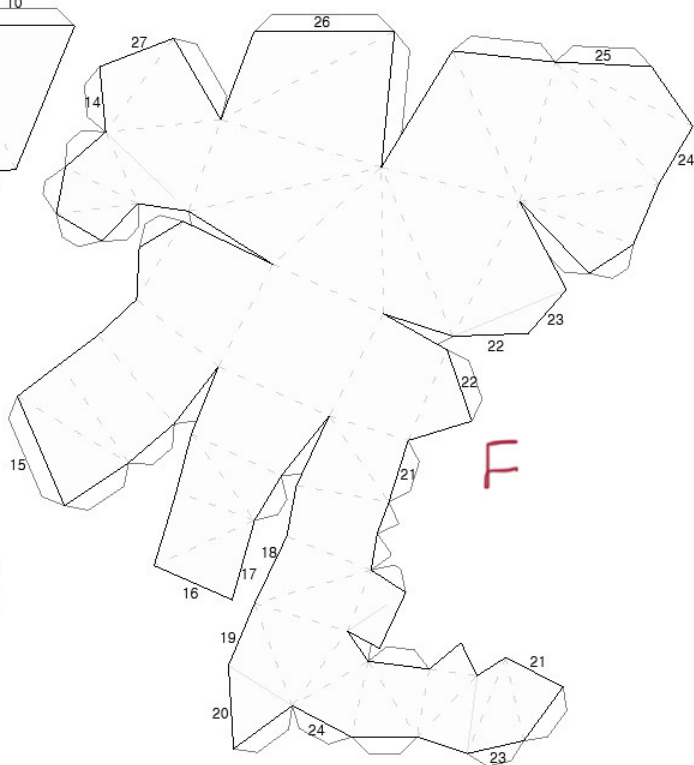
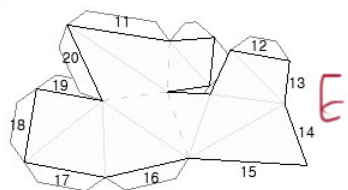
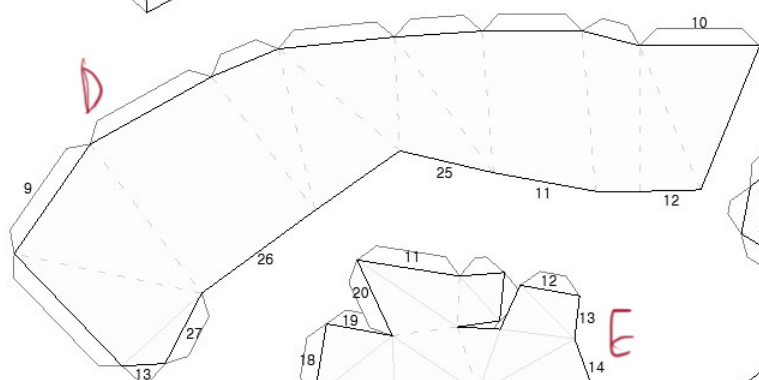
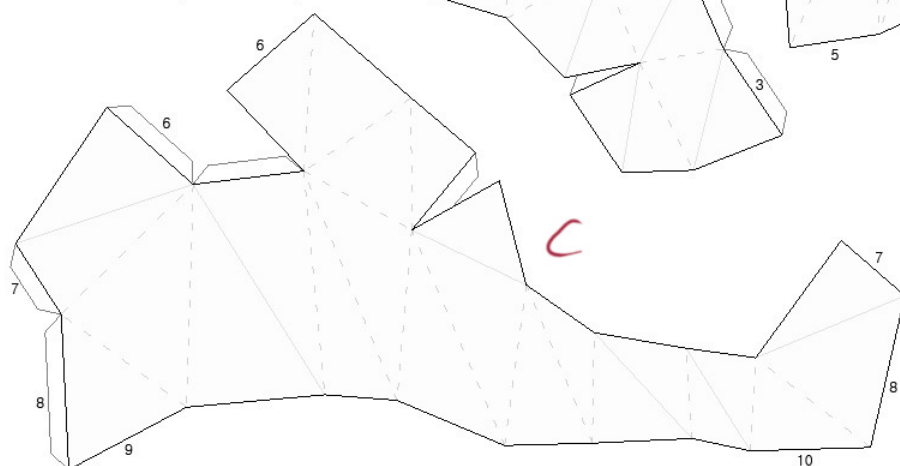
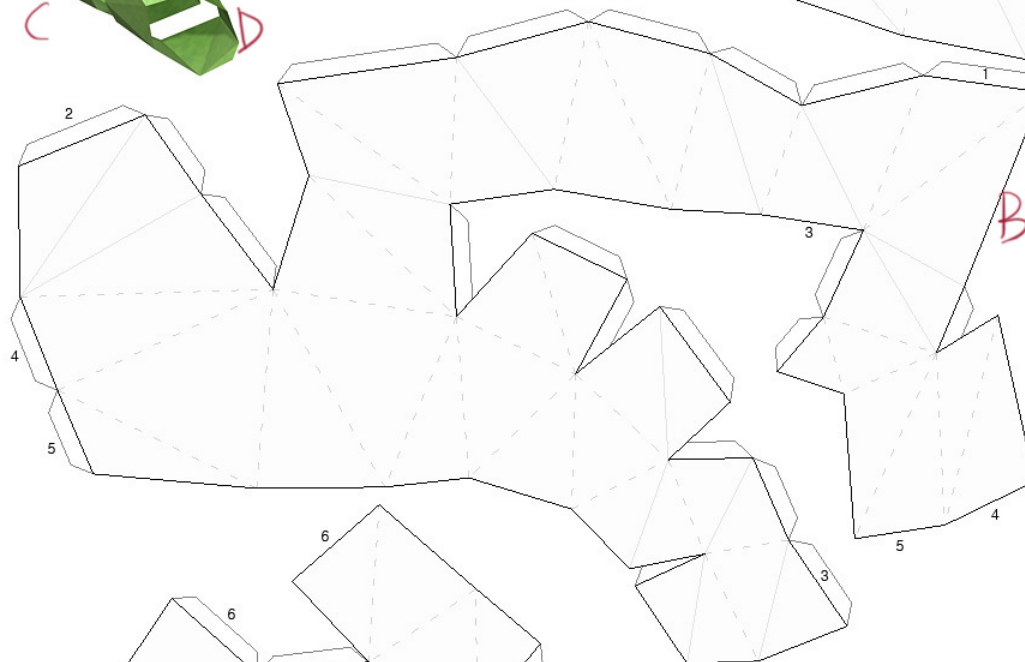
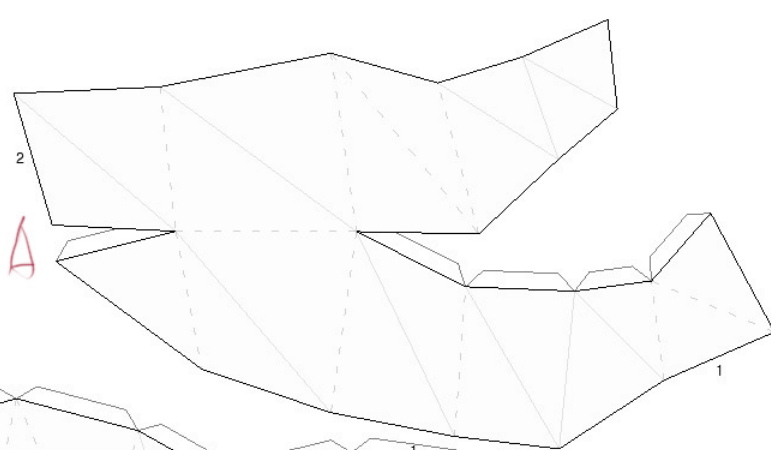
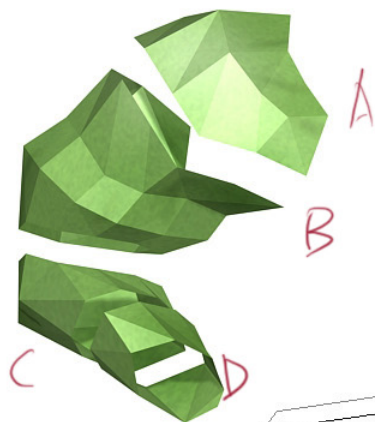


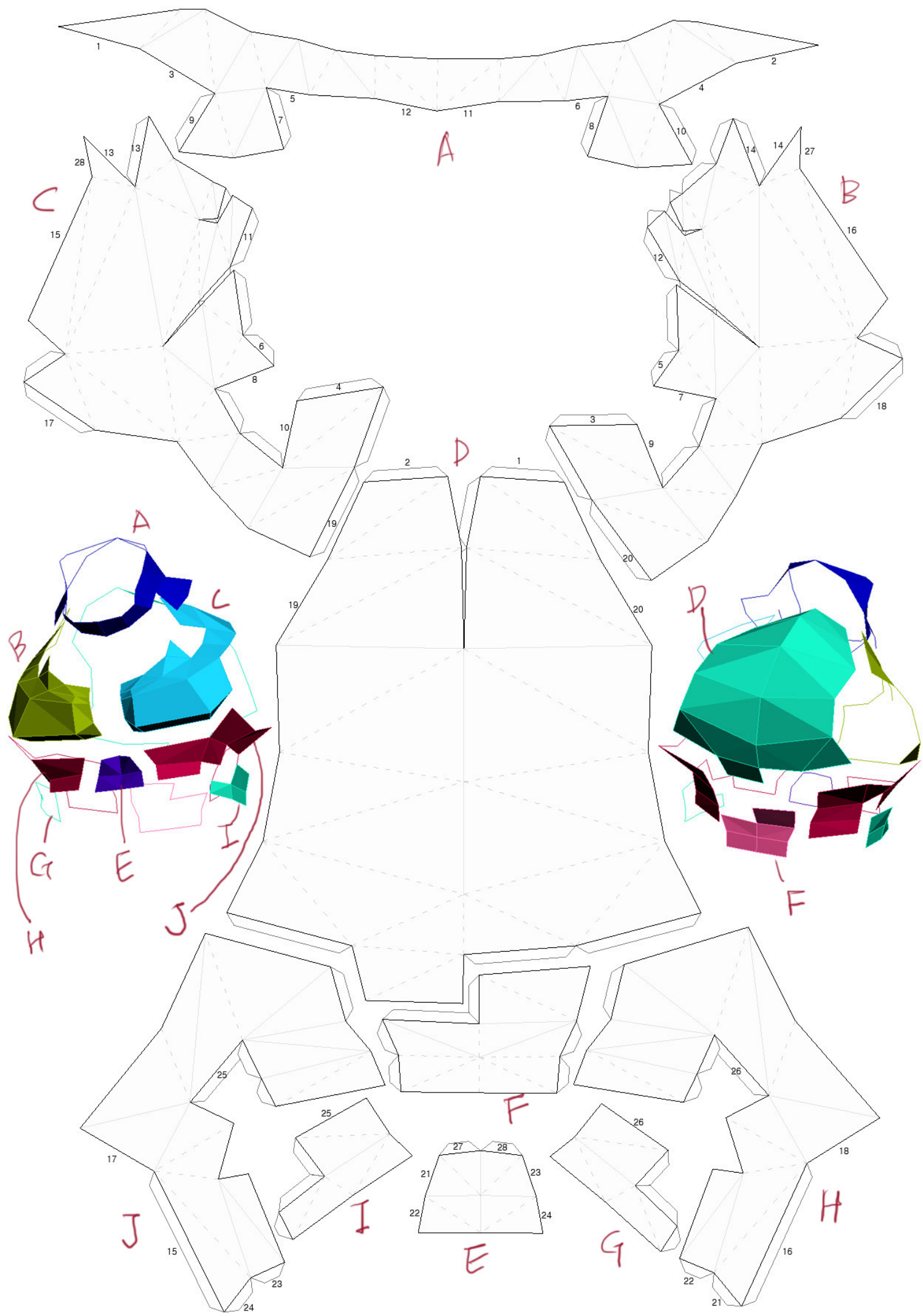


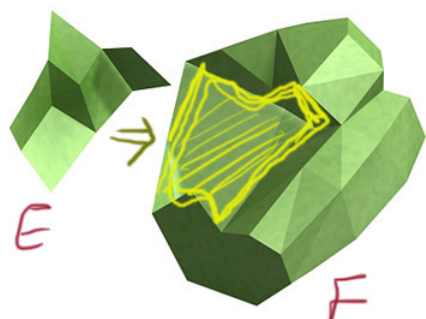
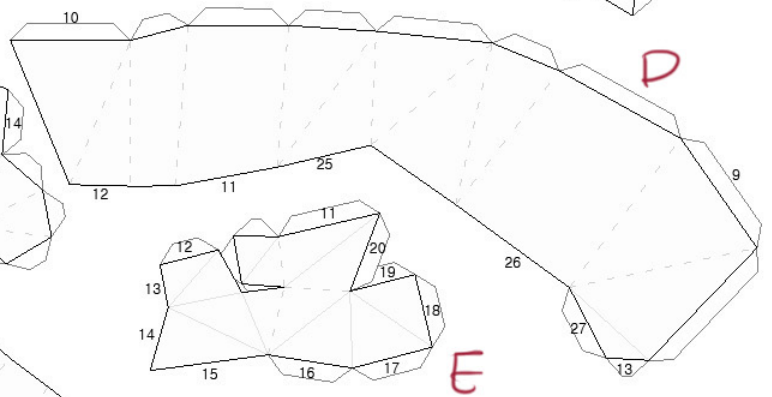
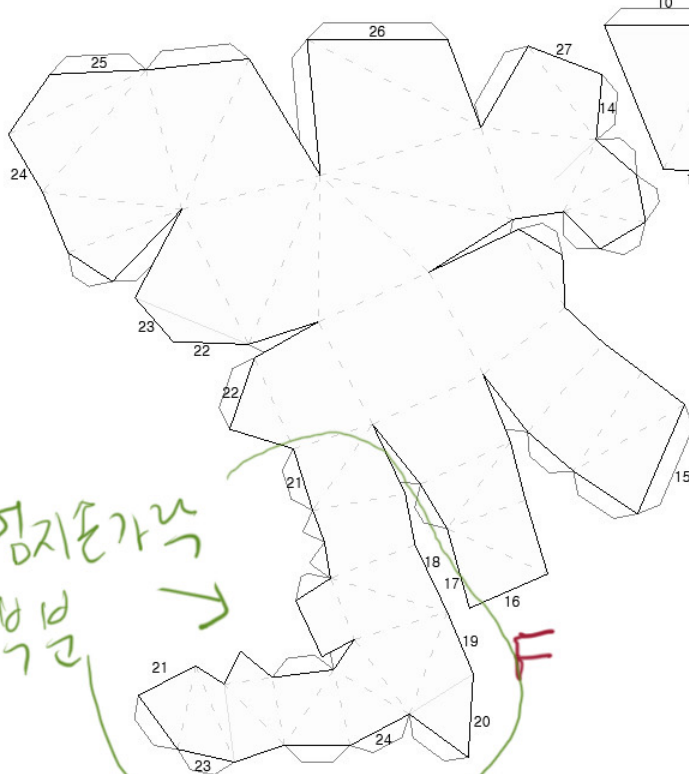
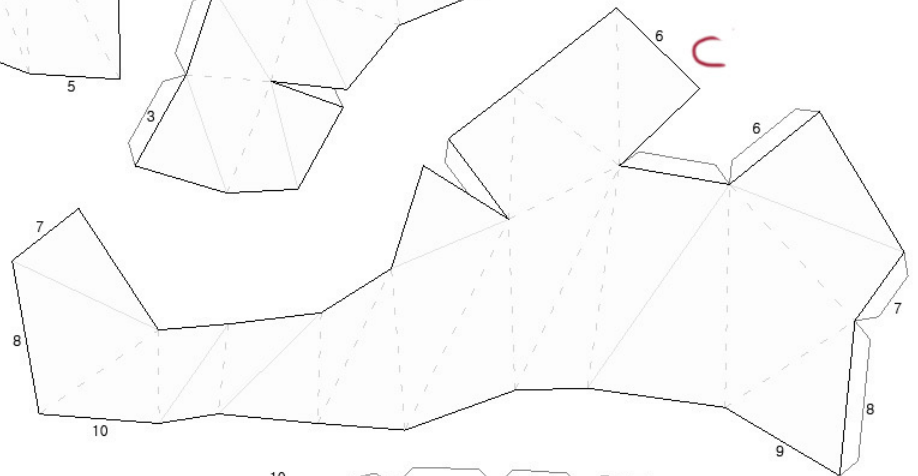
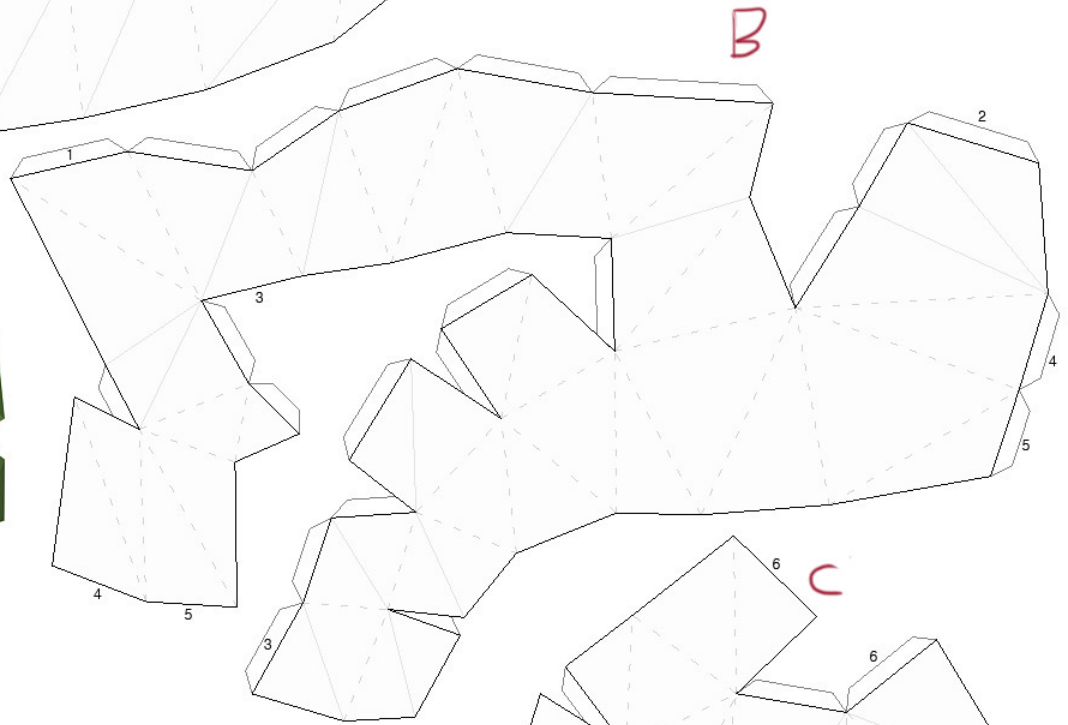
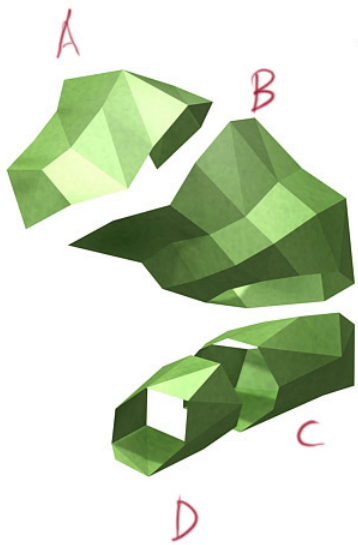
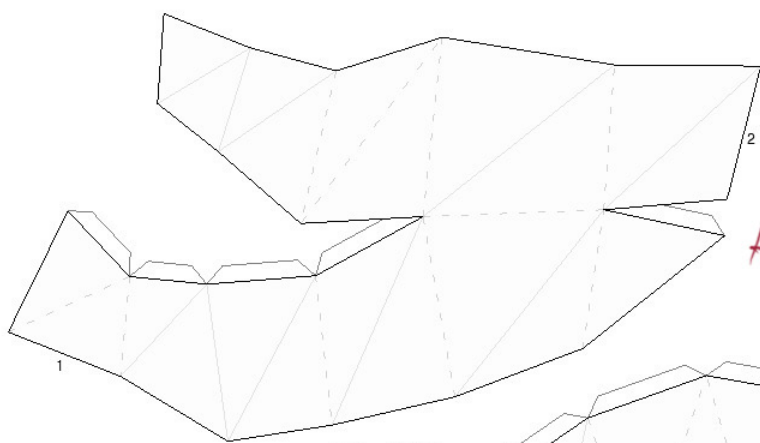
* 주의사항

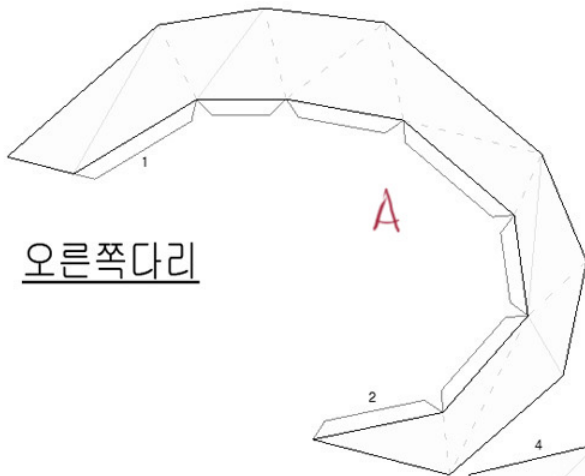


B를 A에 붙이기전에 다리(C)를 B에 넣은후
A에 붙여주세요
C가 목이 굽어서 A에 넣기 힘듭니다

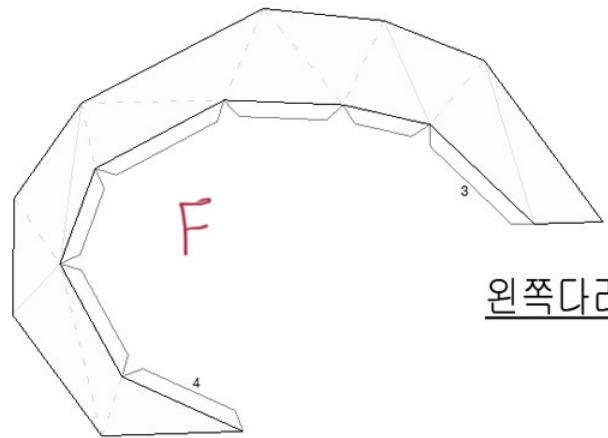




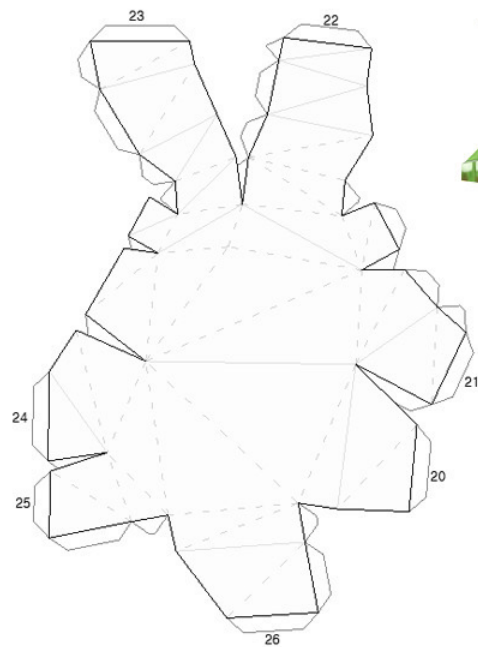
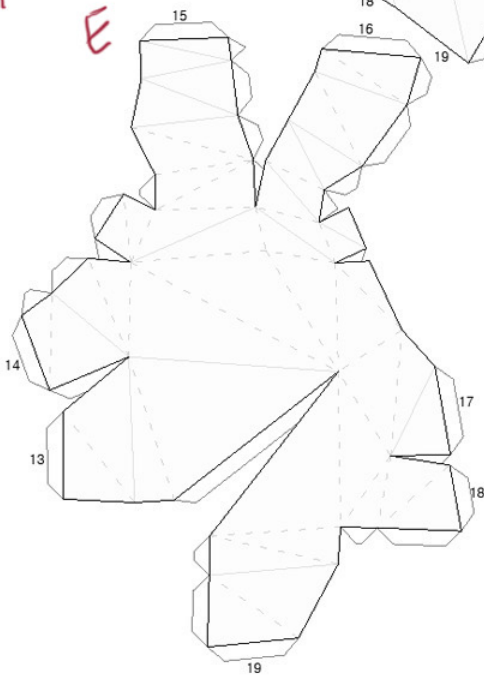
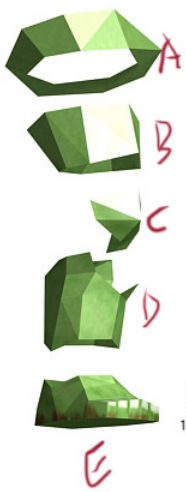
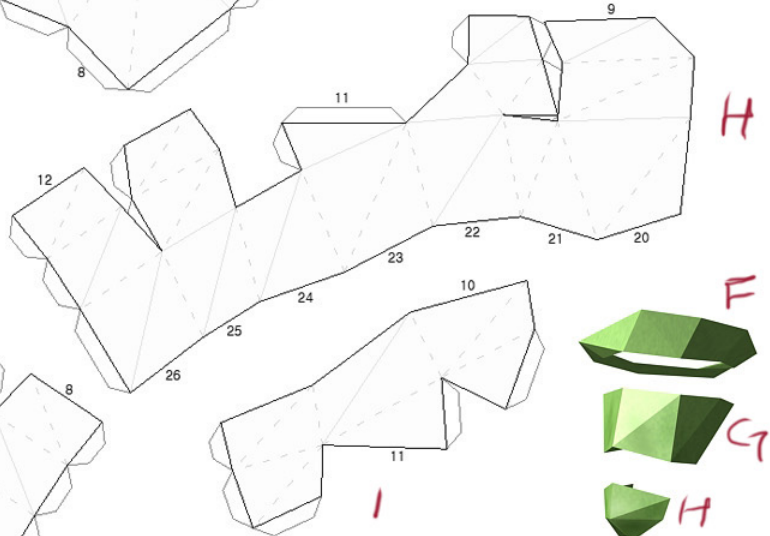
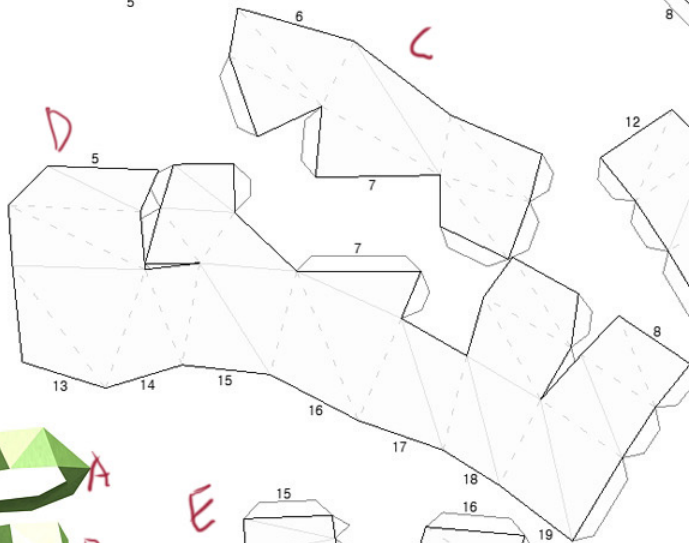
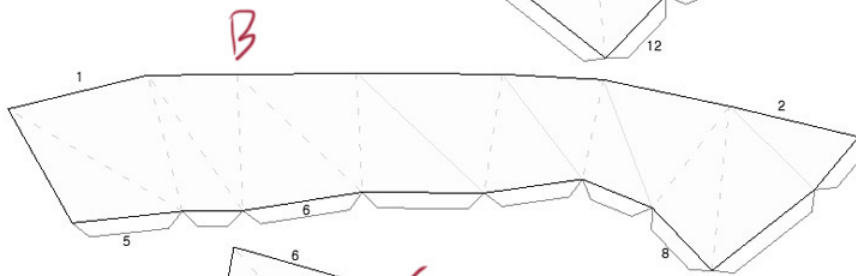
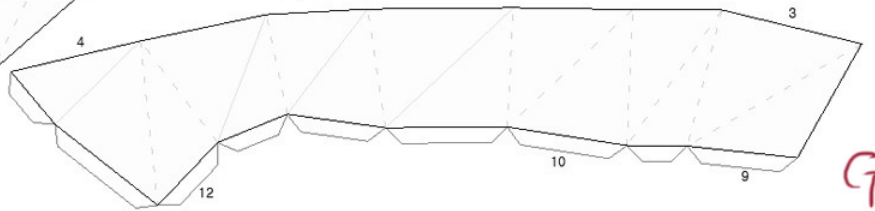




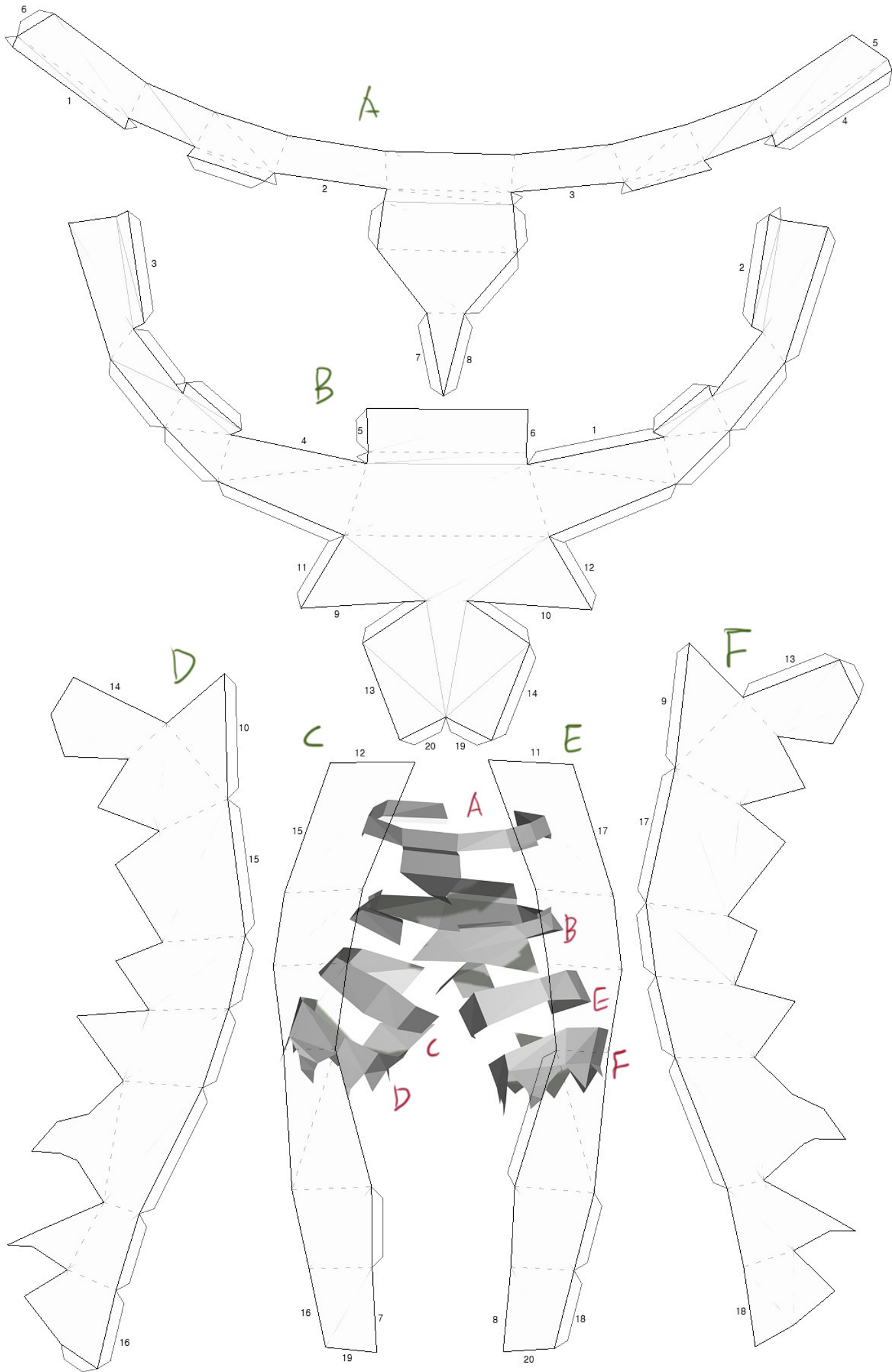
오른쪽다리



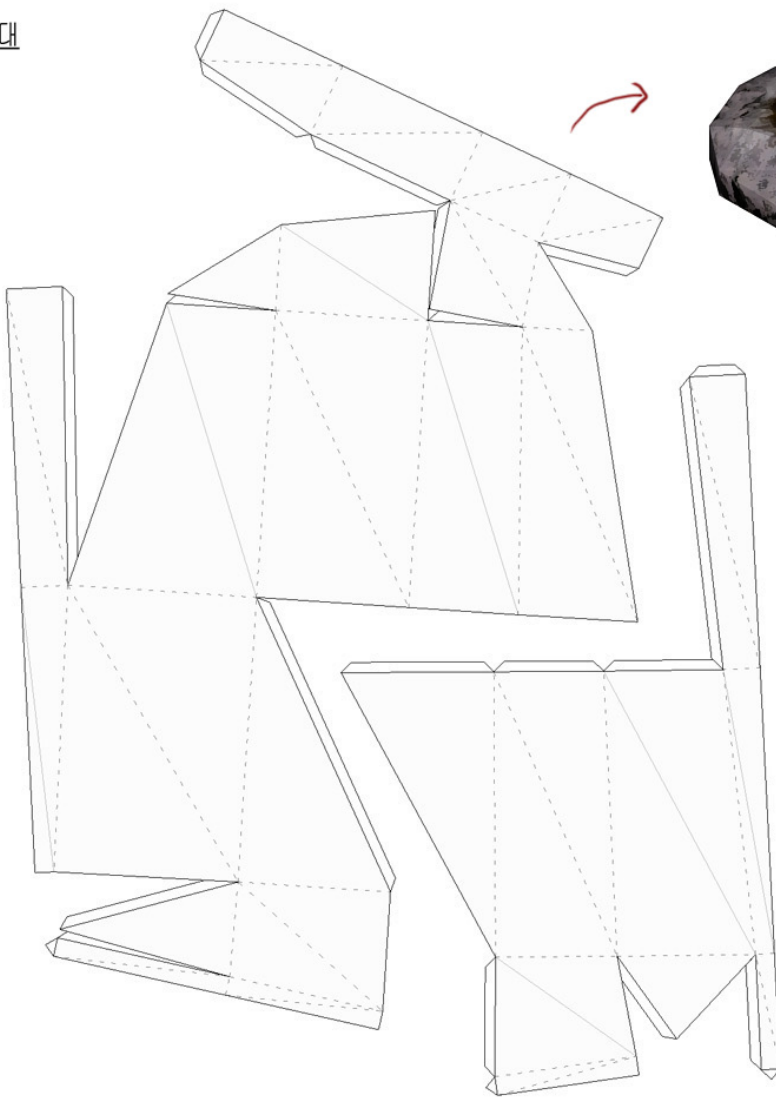
왼쪽다리



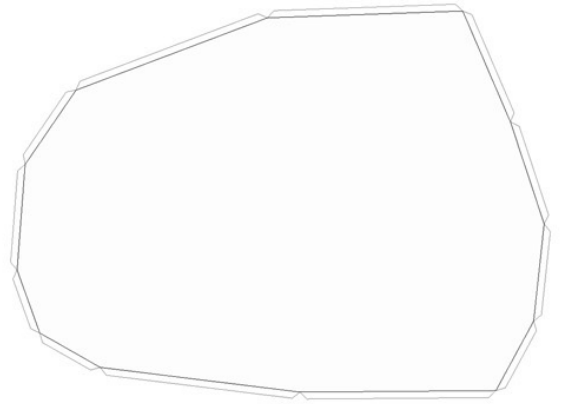
J



받침대

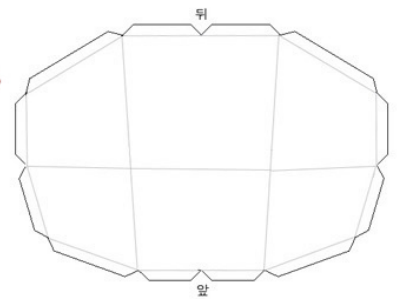
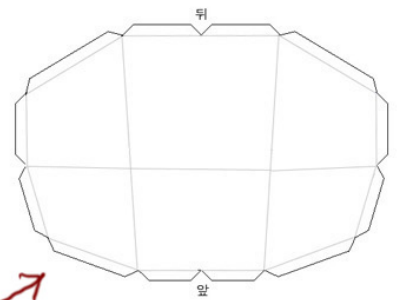


밑면



상체, 하체 접지면

상, 하체 접지면과 받침대
바닥은 안쪽에 두꺼운 종이를
덧대서 휘어지지 않도록
해주세요



○ 부분 (칼질된 부분 참고하세요)

