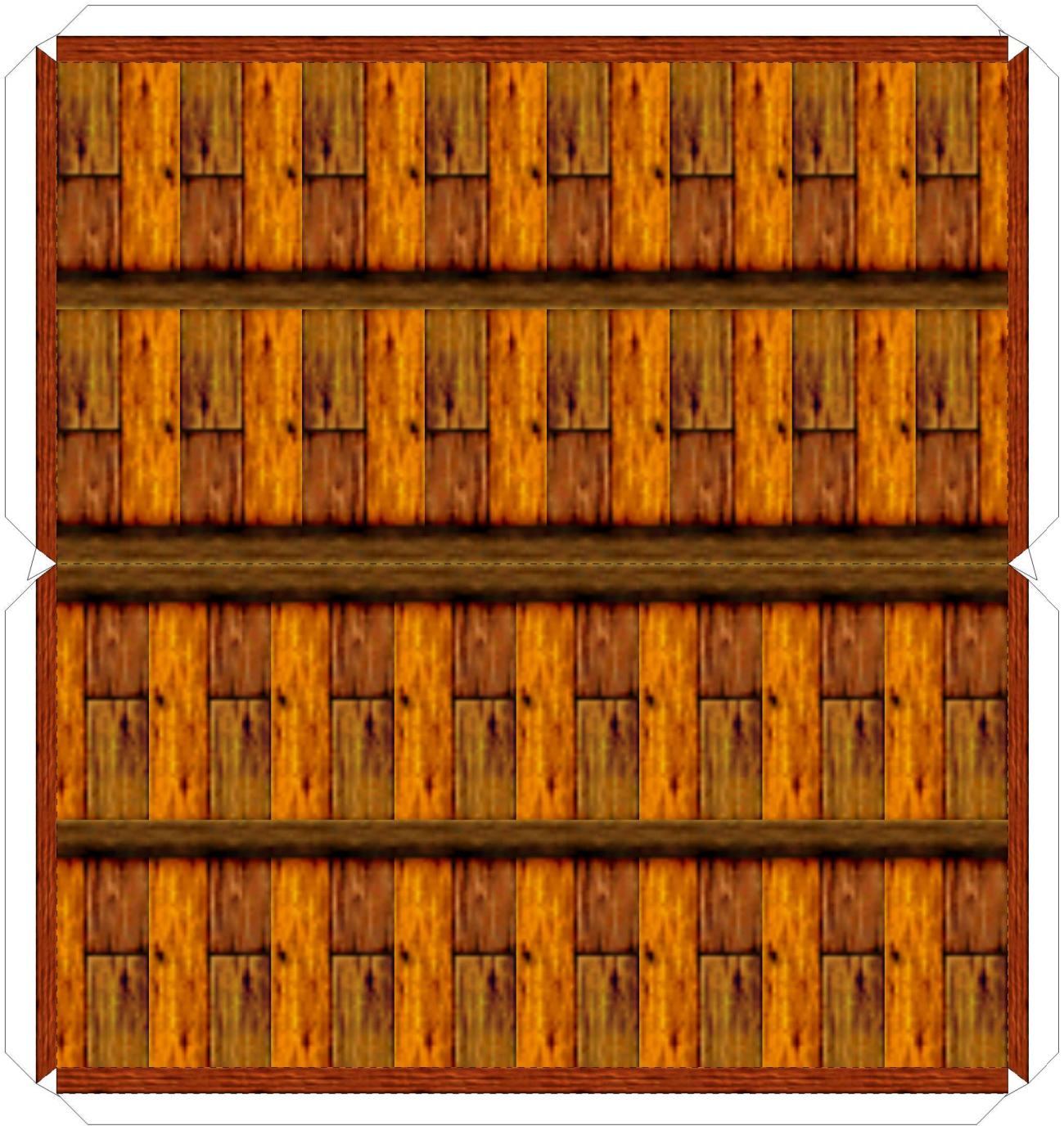


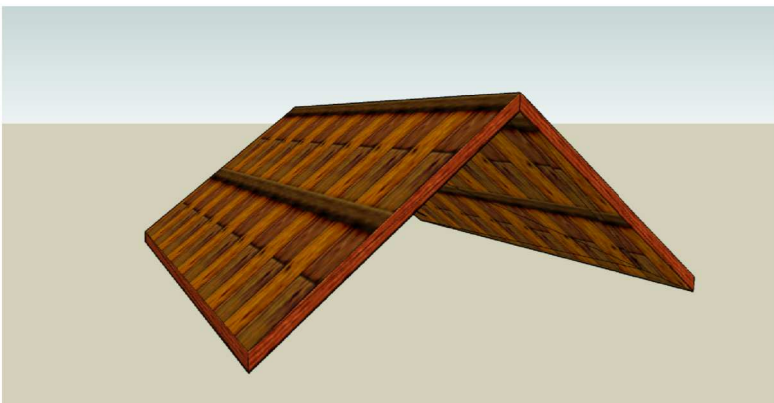
roof's bottom piece

DONKEY KONG'S HOUSE

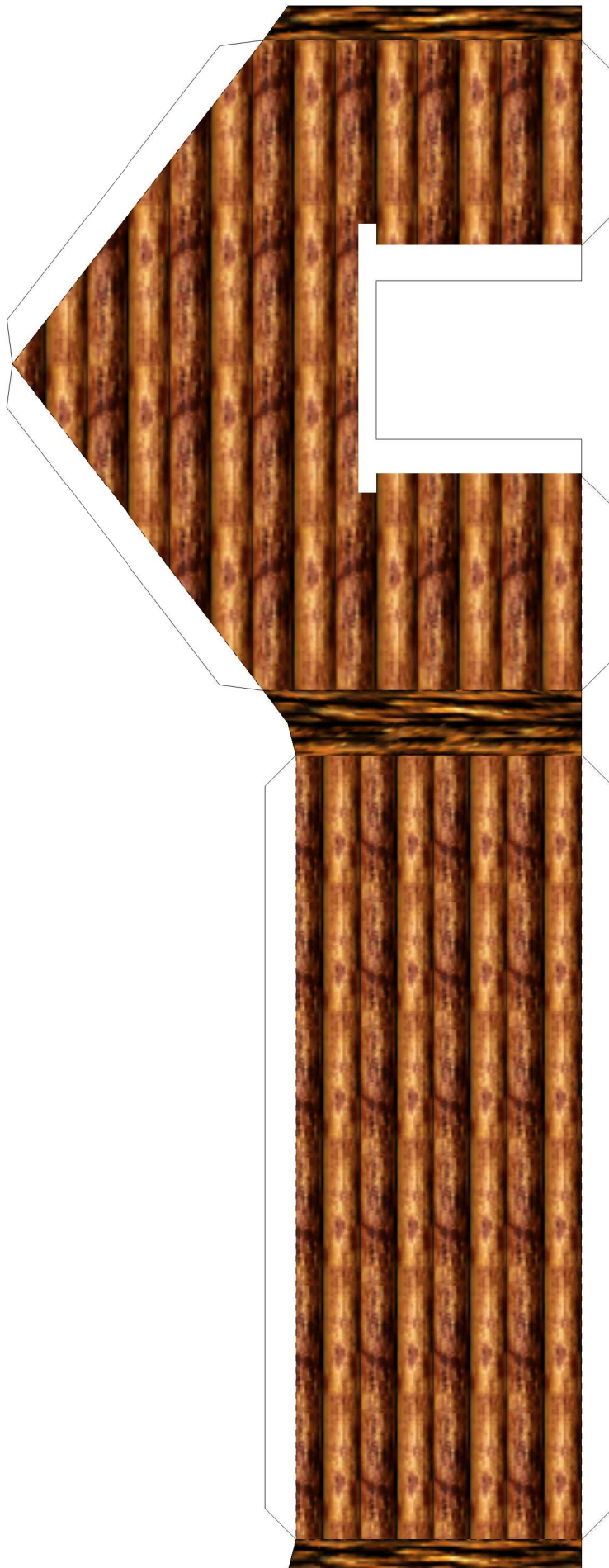
BY G1P1



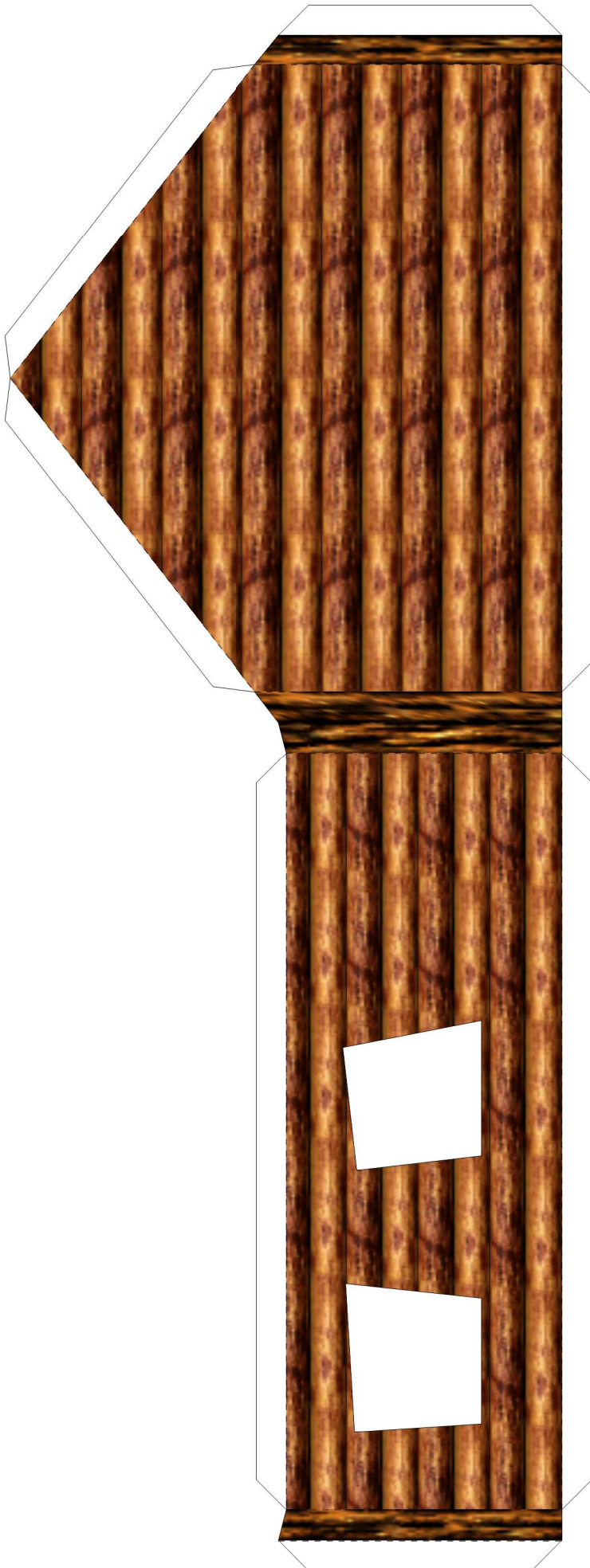
roof's top piece



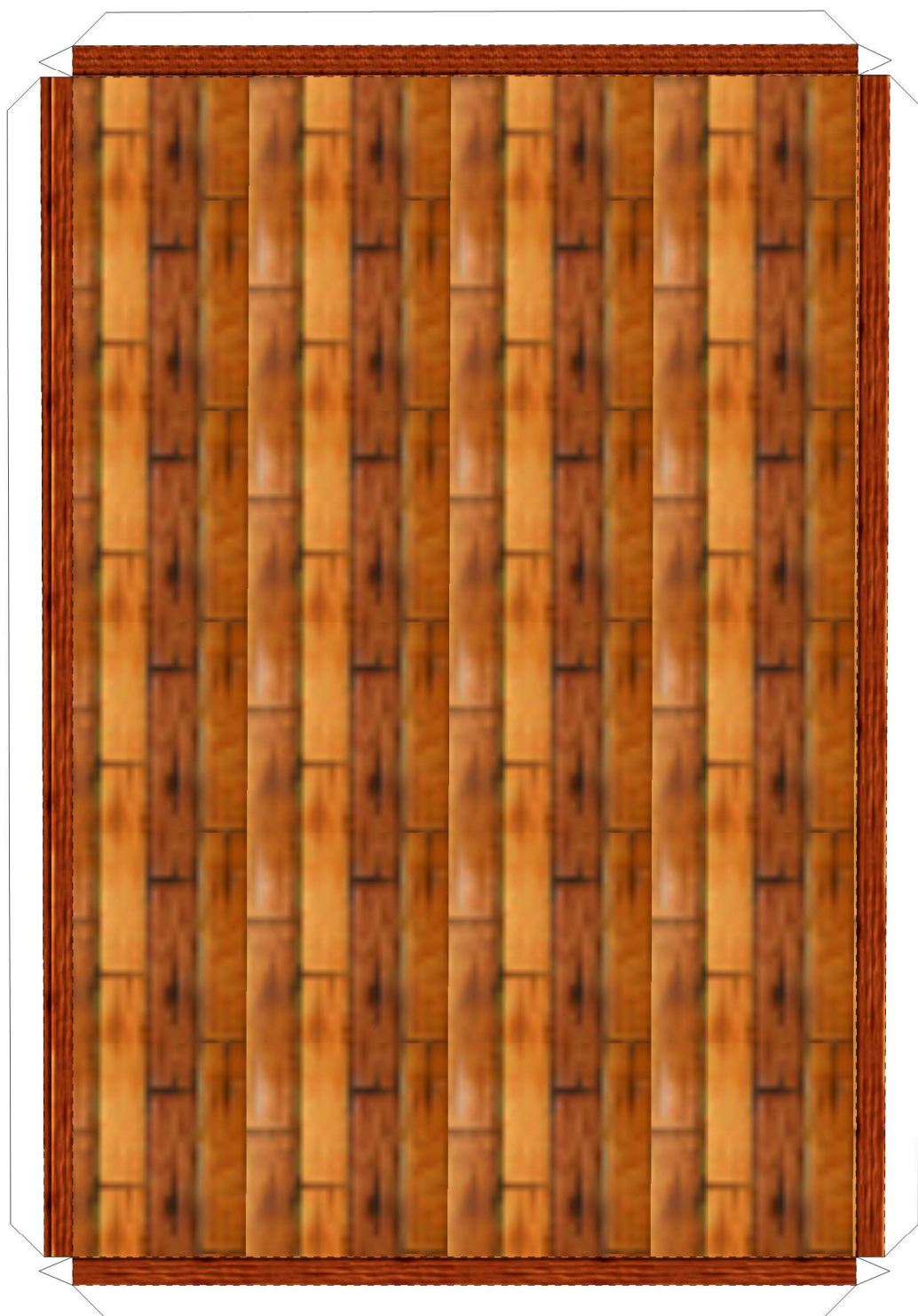
The roof completed.



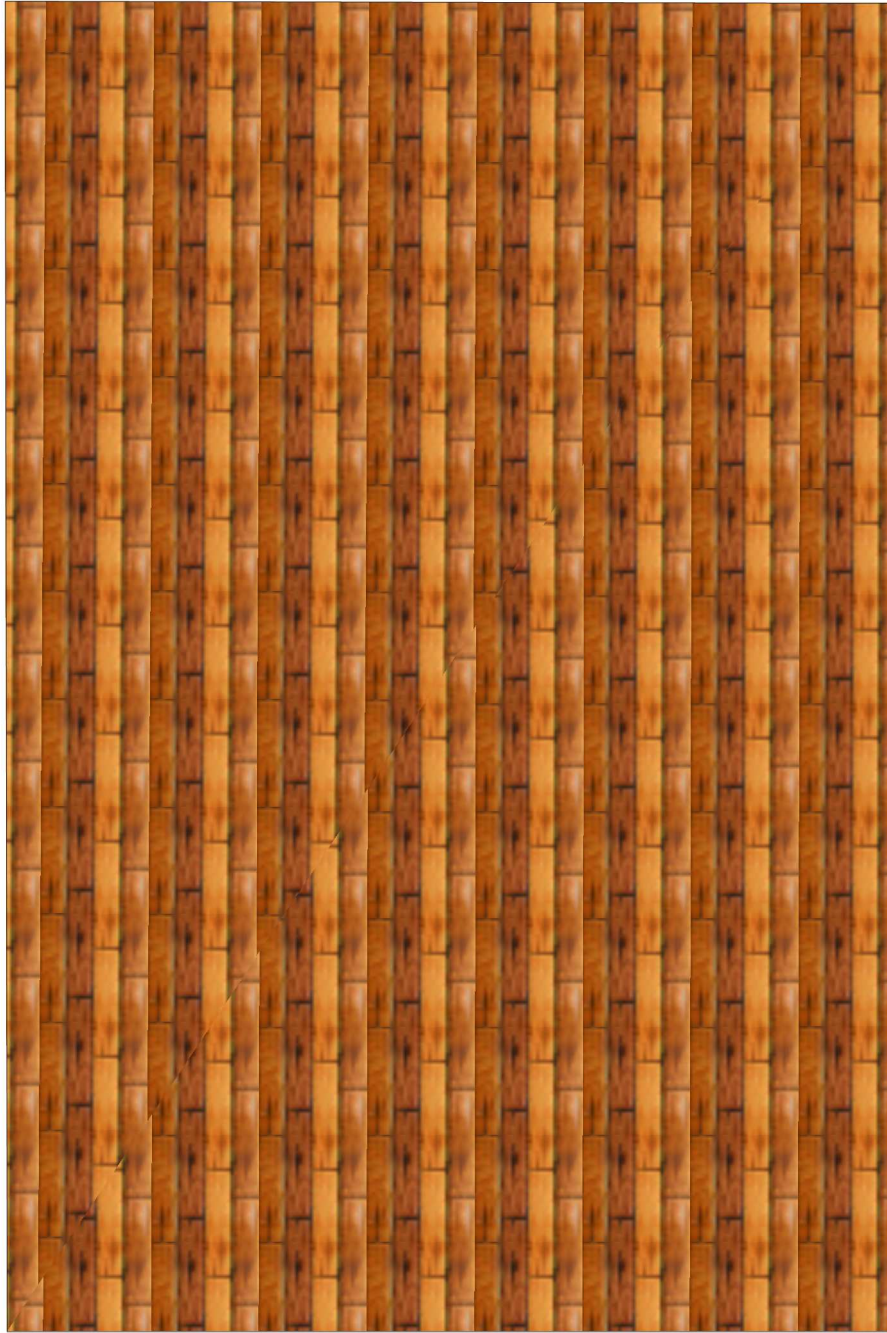
WALLS:
First
Piece



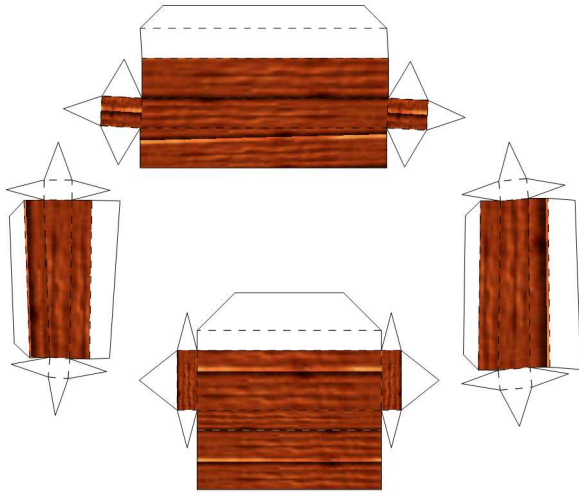
**WALLS:
SECOND
PIECE**



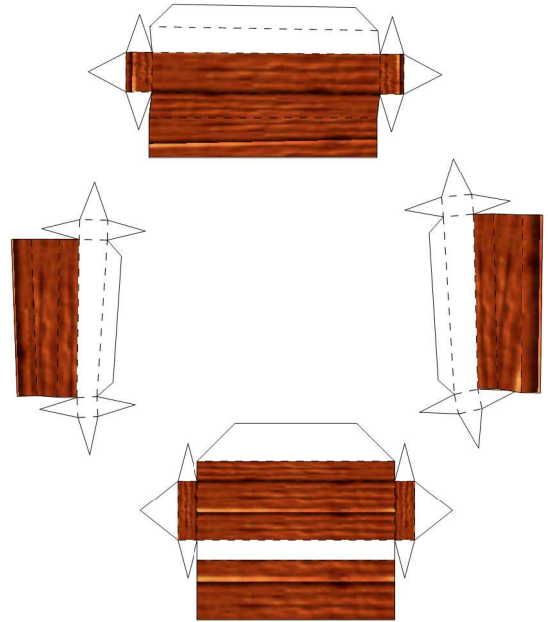
FLOOR'S BOTTOM PIECE



FLOOR'S TOP PIECE

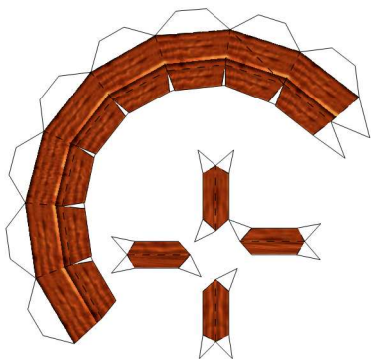


left window

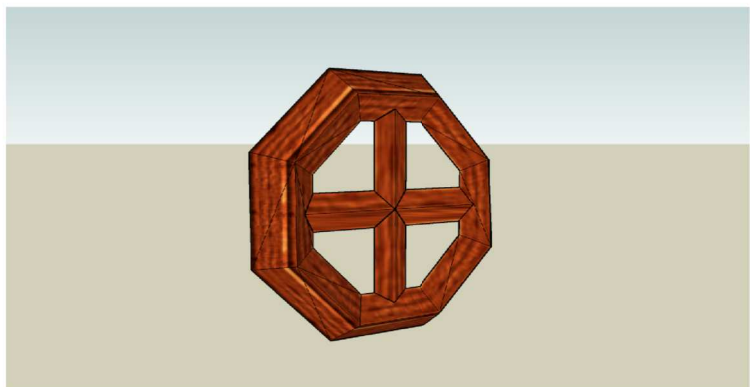


right window

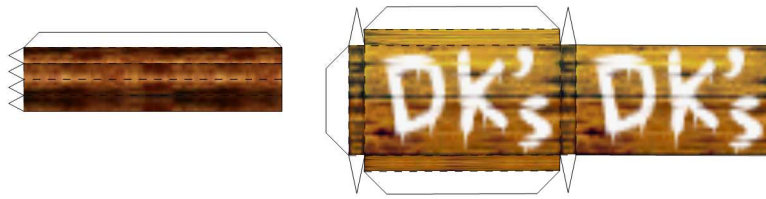
(The left's your left, and the right's your right)



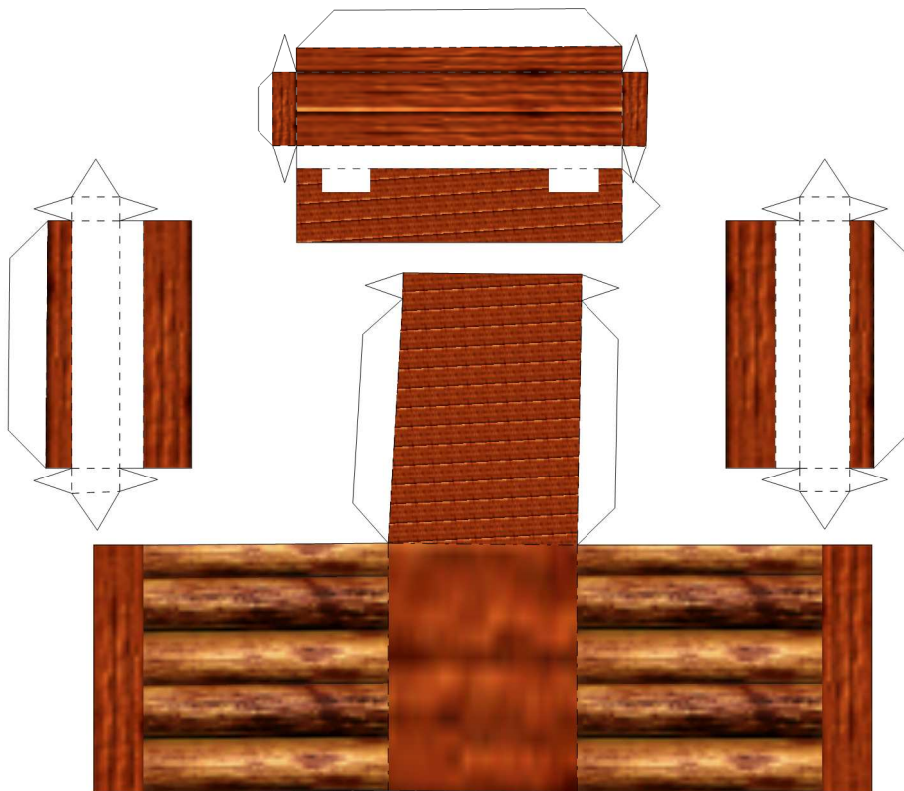
octogonal window



The octogonal window is supposed to be like that.



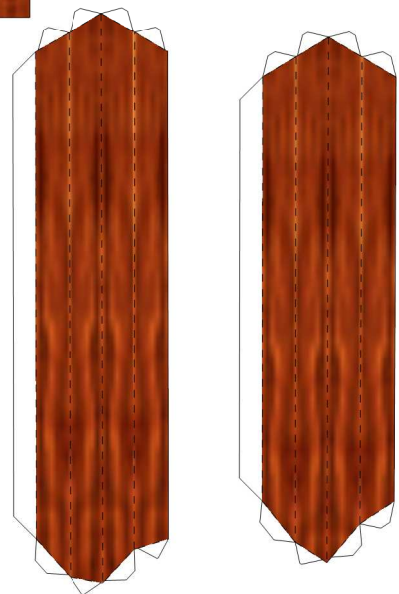
HOUSE'S BANNER



DOOR



**After the door is completely done,
it should looks like that.**



BEAMS



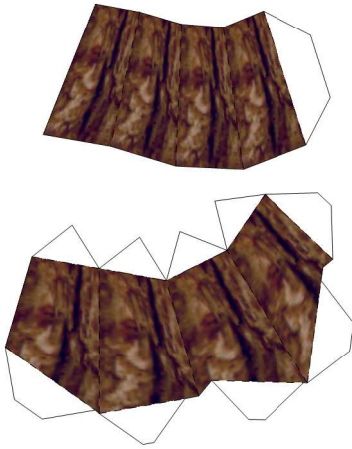
tree's trunk (page 1 of 2)



tree's trunk (page 2 of 2)



roof's tree pieces



tree piece



The tree when assembled.

**I didn't take pictures of all pieces,
but just of them that could be tricky.
Here's the final look of Donkey Kong's
house:**



Gipi, 2009. www.nintendopapercraft.com & www.papercraftmuseum.com.