

Neuschwanstein Castle, Germany: Pattern

Canon ® is a registered trademark of Canon Inc. © Canon Inc. © T.Ichiyama

Canon



View of completed model

Neuschwanstein Castle, Germany

Built by King Ludwig II, this castle - "new swan stone" - is located near Fussen in Bavaria, at the end of a romantic roadway. It's also called the Swan Castle. Construction began September 5, 1869, and ceased when Ludwig II died in 1886, leaving many parts of the plans unbuilt.

*This model was designed for Papercraft and may differ from the original in some respects.

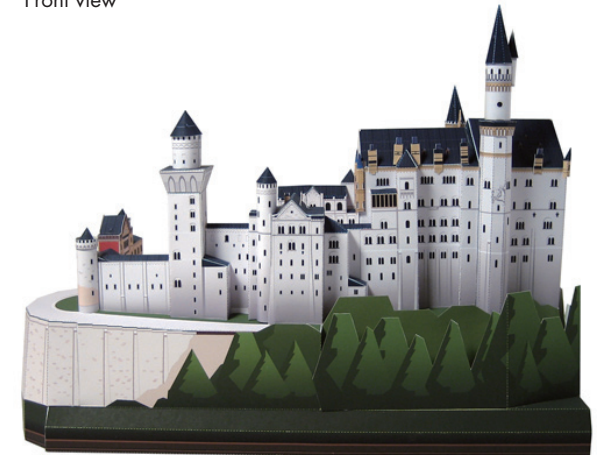
■ Parts list(pattern):Nine US letter sheets(No.1 to No.9)

■ No. of Parts:75

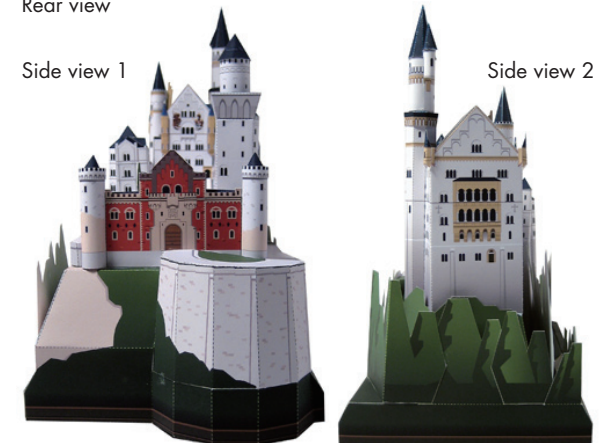
*Build the model by carefully reading the Assembly Instructions, in the parts sheet page order.



Front view



Rear view



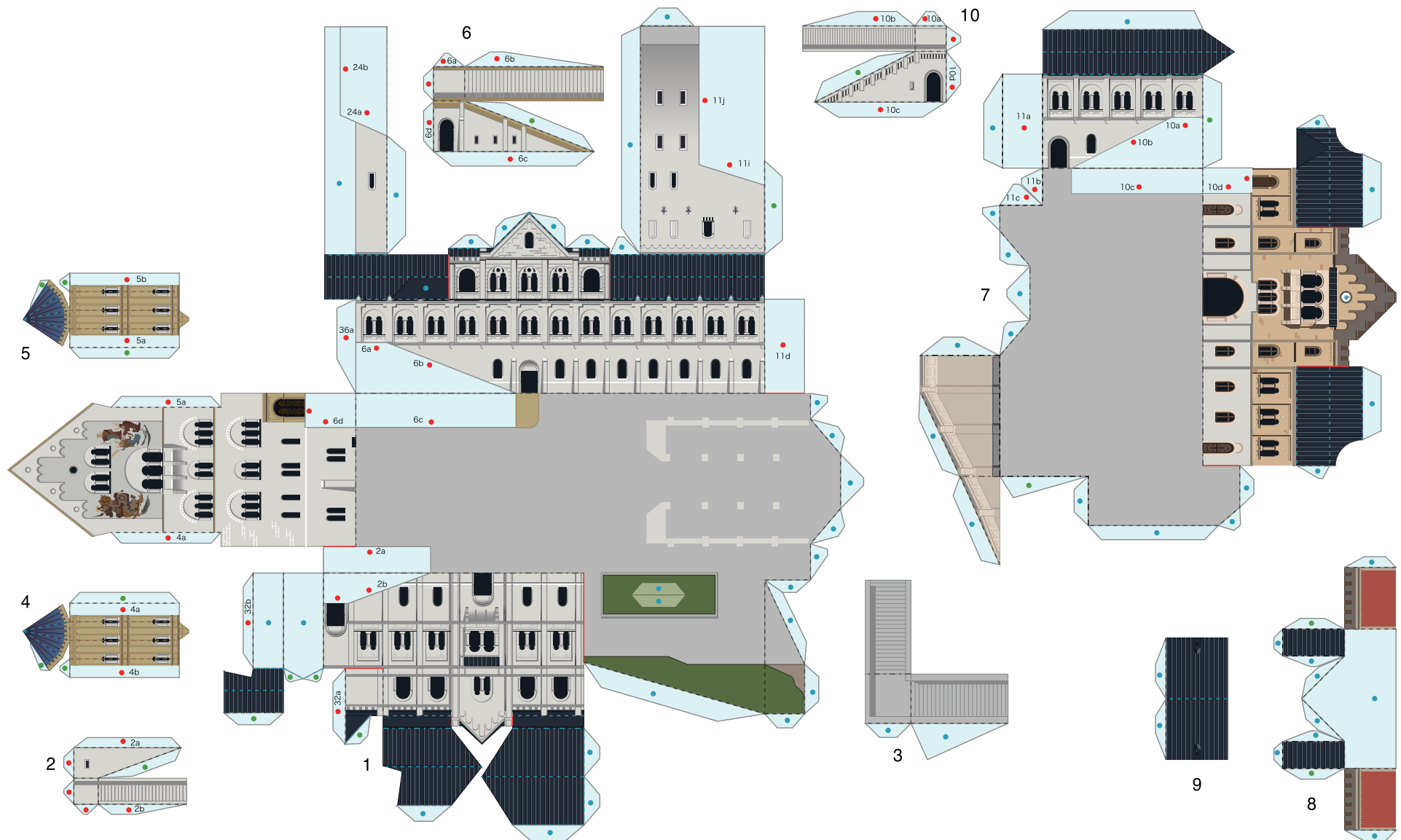
Side view 1

Side view 2

Neuschwanstein Castle, Germany: Pattern

Canon ® is a registered trademark of Canon Inc. © Canon Inc. © T.Ichiyama

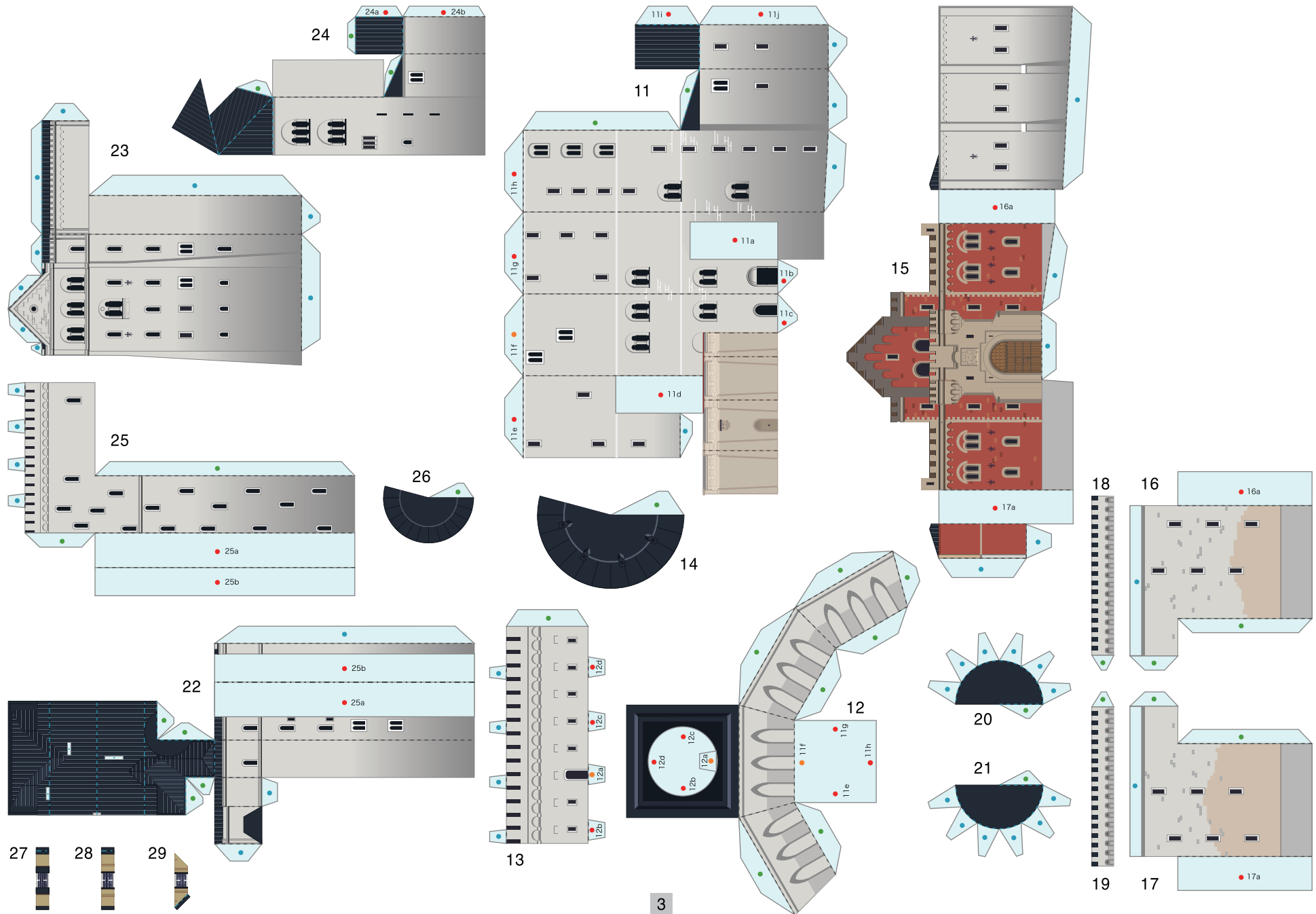
Canon



Neuschwanstein Castle, Germany: Pattern

Canon ® is a registered trademark of Canon Inc. © Canon Inc. © T.Ichiyama

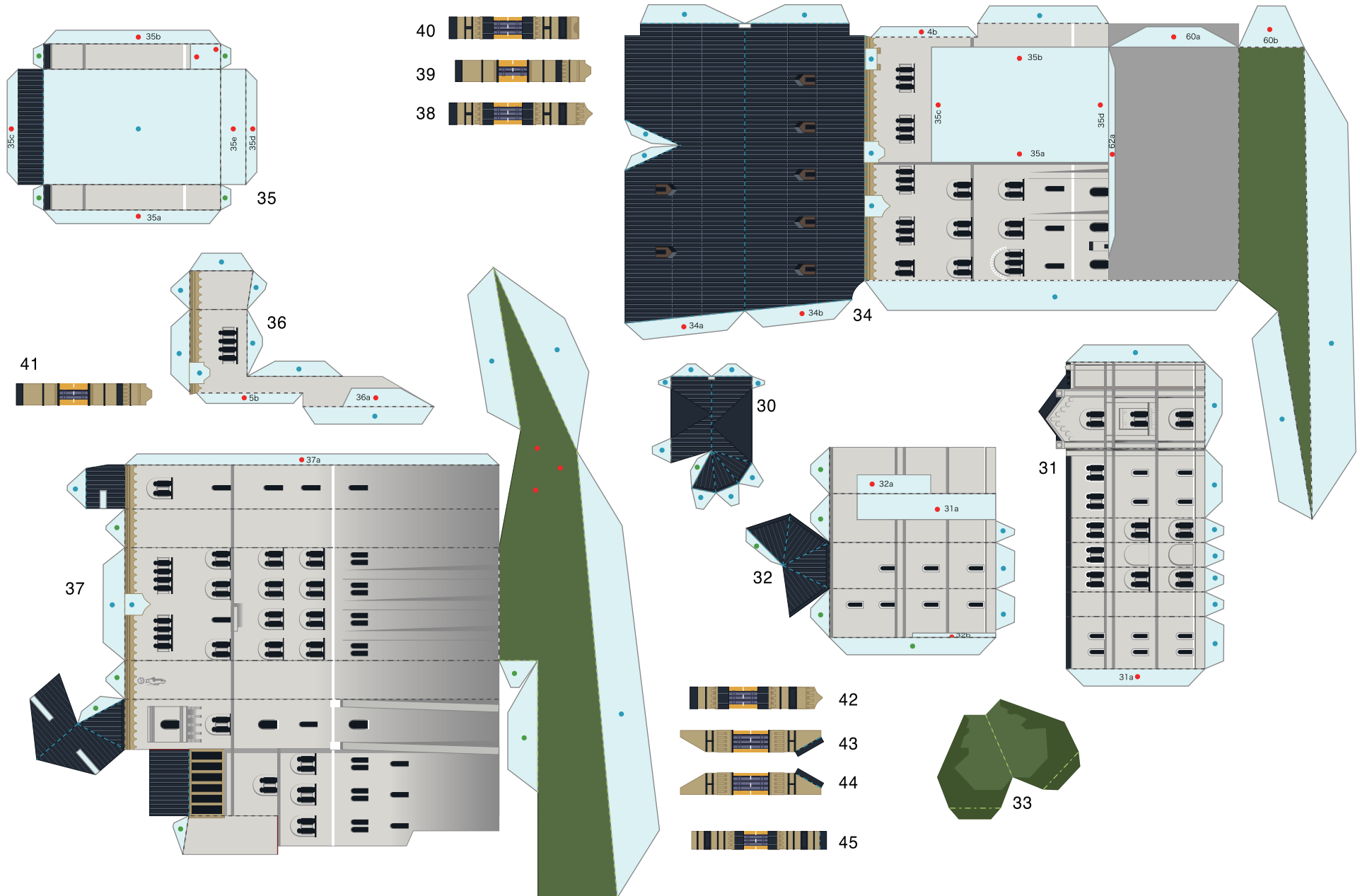
Canon



Neuschwanstein Castle, Germany: Pattern

Canon ® is a registered trademark of Canon Inc. © Canon Inc. © T.Ichiyama

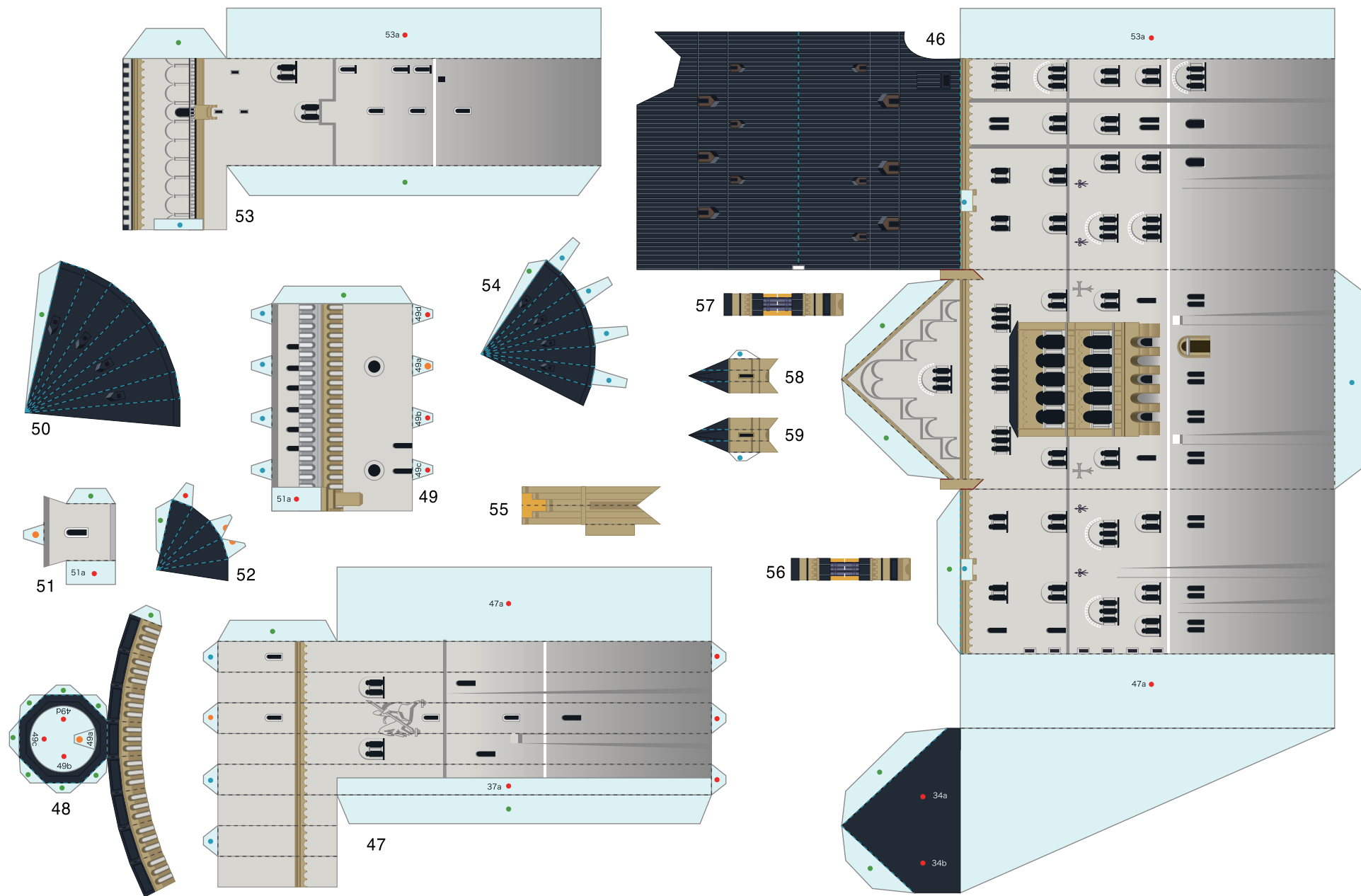
Canon



Neuschwanstein Castle, Germany: Pattern

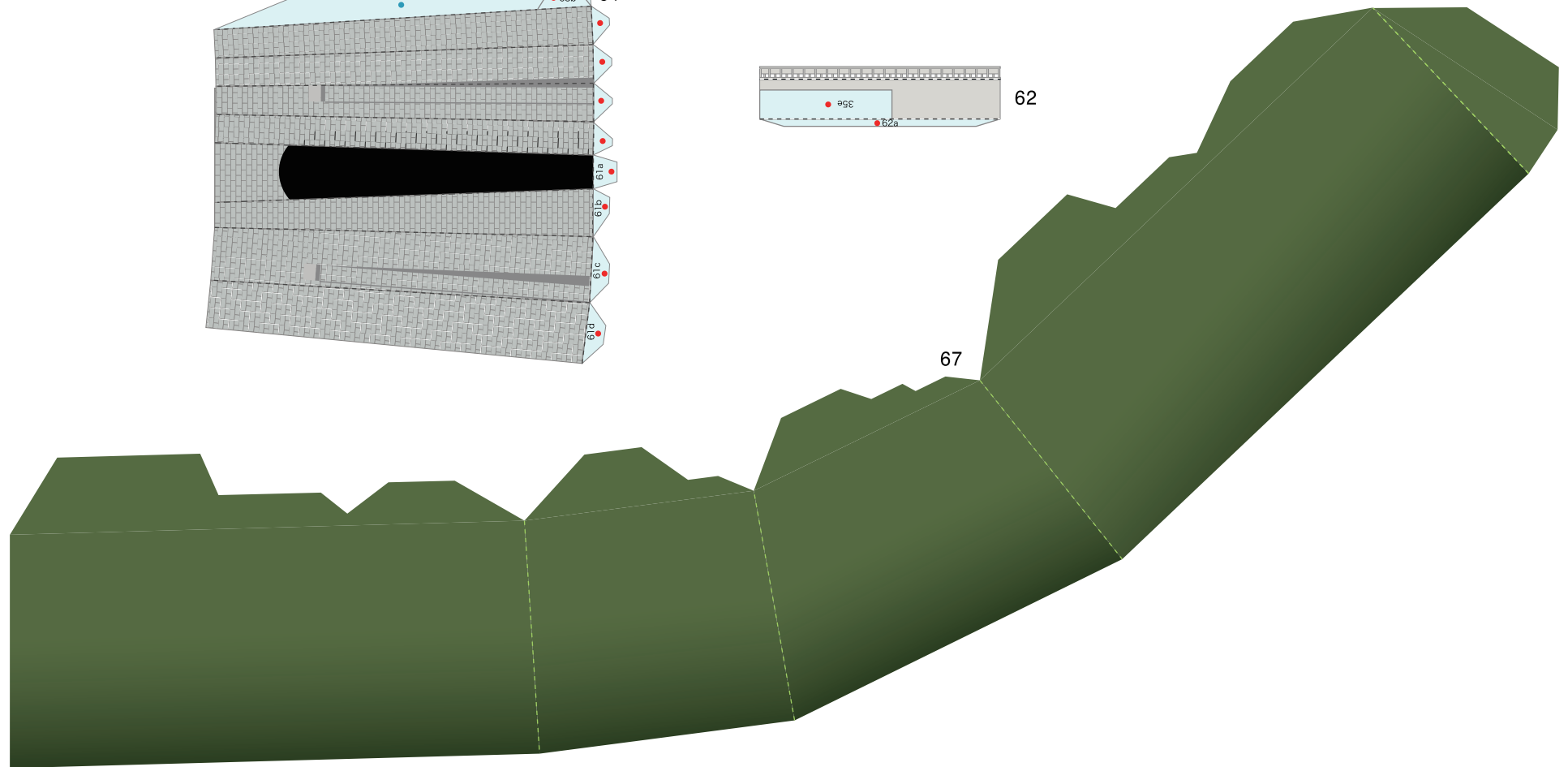
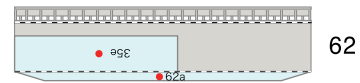
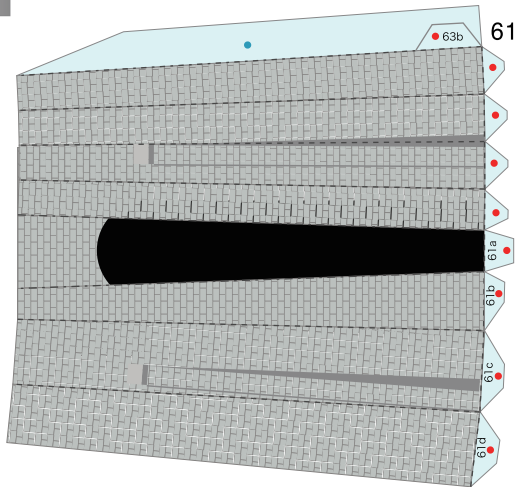
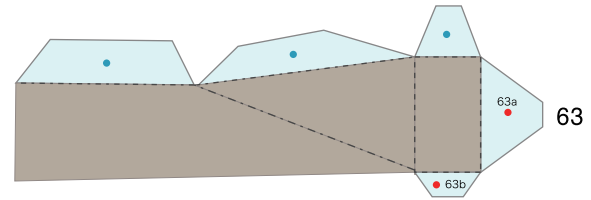
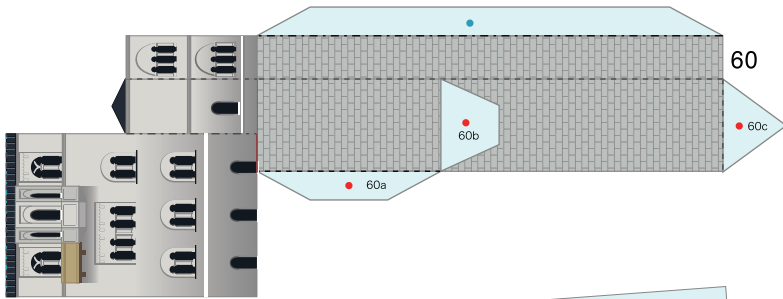
Canon ® is a registered trademark of Canon Inc. © Canon Inc. © T.Ichiyama

Canon



Neuschwanstein Castle, Germany: Pattern

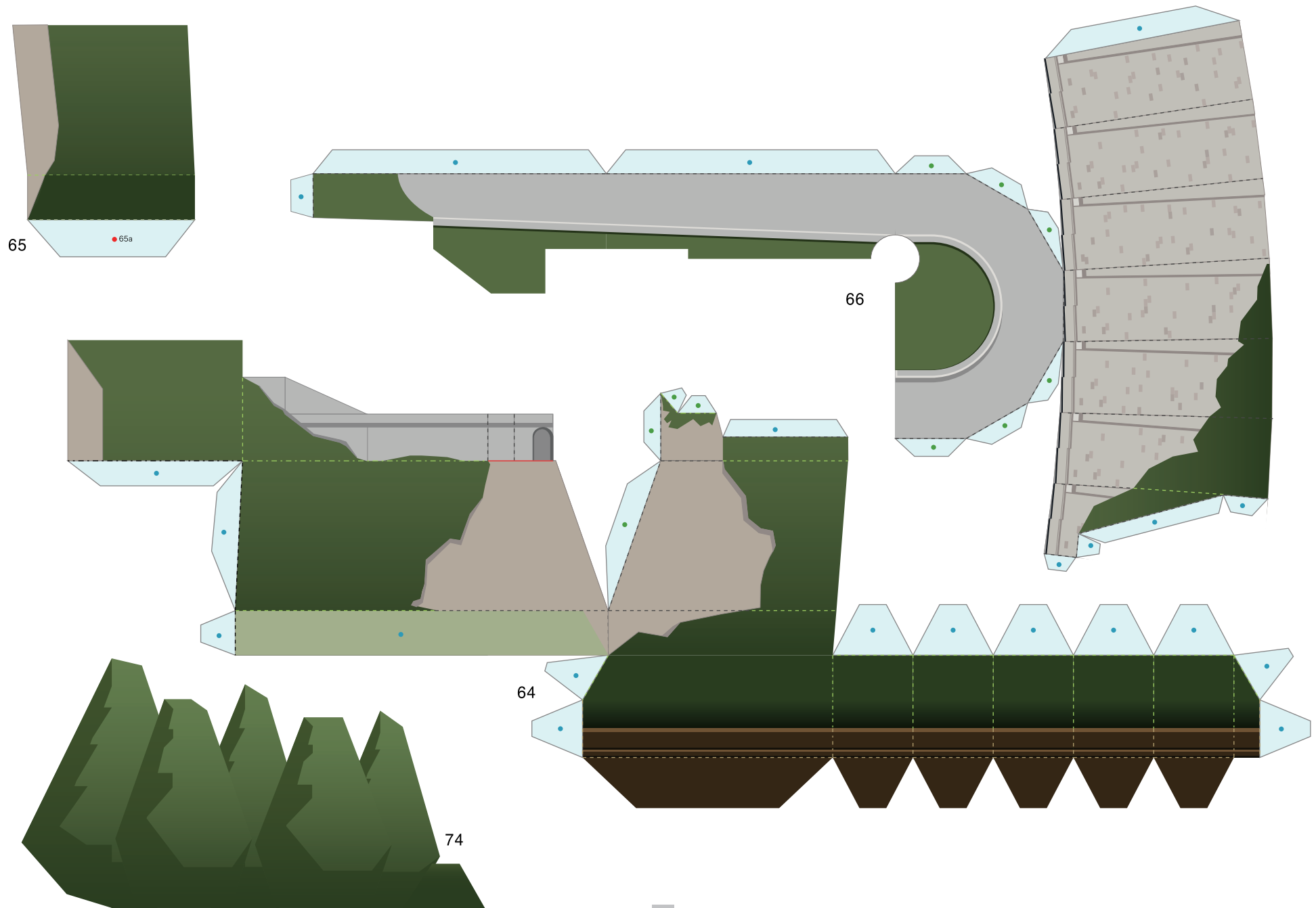
Canon ® is a registered trademark of Canon Inc. © Canon Inc. © T.Ichiyama



Neuschwanstein Castle, Germany: Pattern

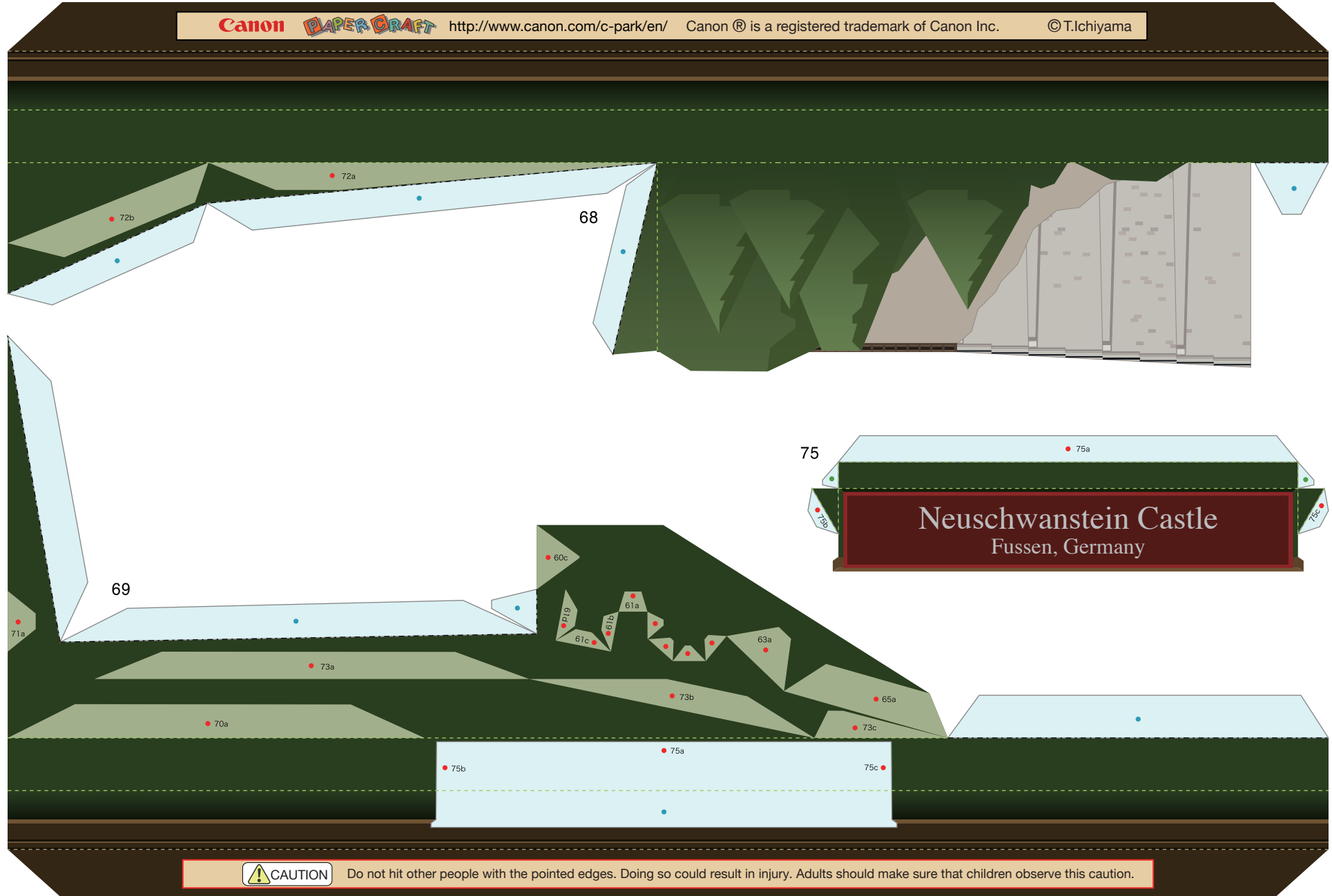
Canon ® is a registered trademark of Canon Inc. © Canon Inc. © T.Ichiyama

Canon



Neuschwanstein Castle, Germany: Pattern

Canon ® is a registered trademark of Canon Inc. © Canon Inc. © T.Ichiyama



Neuschwanstein Castle, Germany: Pattern

Canon ® is a registered trademark of Canon Inc. © Canon Inc. © T.Ichiyama

