

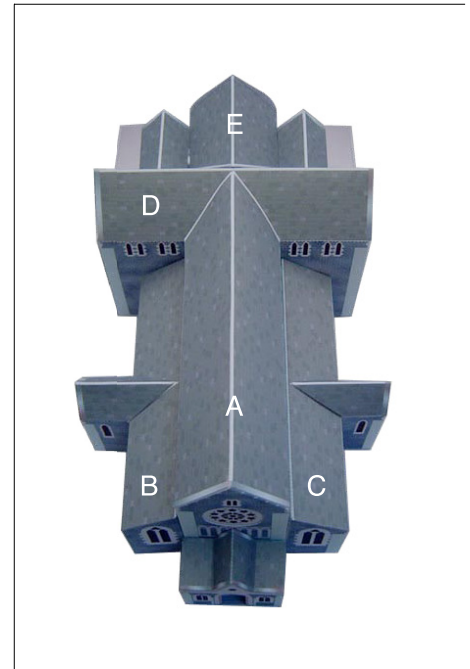
# New Zealand ChristChurch Cathedral : Assembly Instructions

Canon

© Canon Inc. © K.Kanekawa / Y.Nakamura

# CREATIVE PARK

<http://www.canon.com/c-park/>



## View of completed model

Before starting assembly:  
Writing the number of each section on its back side before cutting out the sections is highly recommended.  
(\* This way, you can be sure which section is which even after cutting out the sections.)

→ Indicates where sections should be glued together.

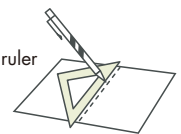
\* This model was designed for Papercraft and may differ from the original in some respects.

## ■ Assembly Instructions: Nine A4 sheets (No. 1 to No. 9)

\* Build the model by carefully reading the Assembly Instructions, in the parts sheet page order.



\*Hint: Trace along the folds with a ruler and an exhausted pen (no ink) to get a sharper, easier fold.



## Assembly Instructions



**Mountain fold (dotted line)**  
Make a mountain fold.



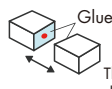
**Valley fold (dashed and dotted line)**  
Make a valley fold.



**Scissors line(solid line)**  
Cut along the line.



**Cut in line(solid line)**  
Cut along the line.



The glue spot(colored dot) shows where to apply the glue.

● **Glue spot(Red dot)**

Glue parts with the same number together.

● **Glue spot(Green dot)**

Glue within the same part.

● **Glue spot(Blue dot)**

Glue to the rear of the other part.

## Tools and materials



Scissors, set square, glue(We recommend stick glue), pencil, used ballpoint pen, toothpicks, tweezers, (useful for handling small parts)

## Assembly tip



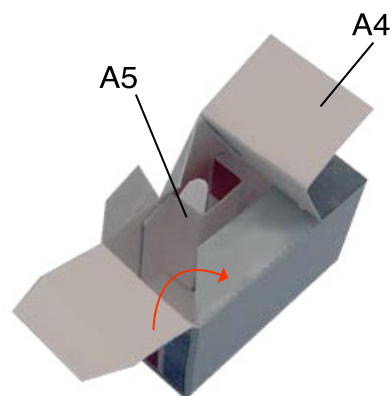
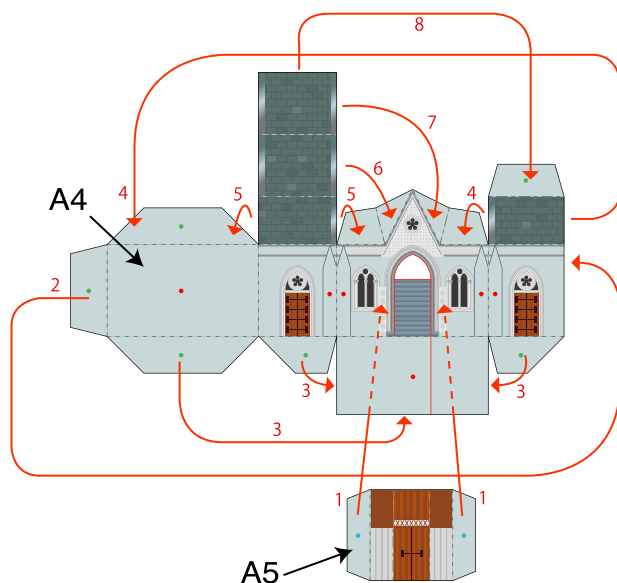
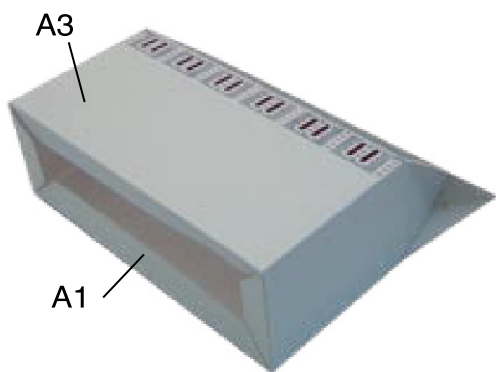
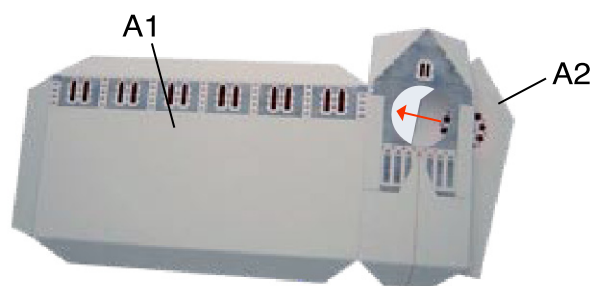
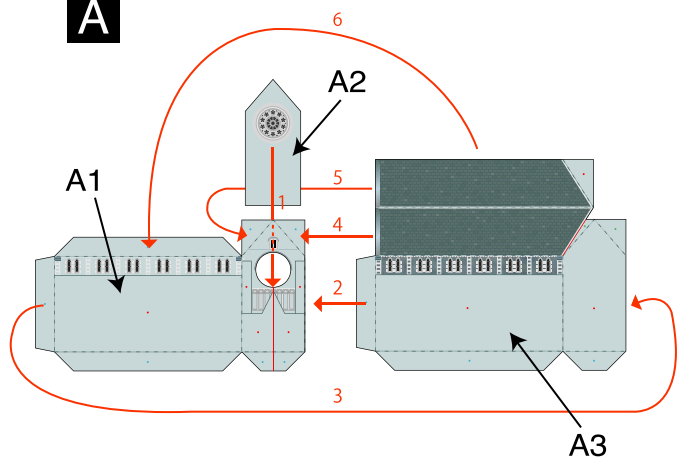
Before gluing, crease the paper along mountain fold and valley fold lines and make sure rounded sections are nice and stiff.

## Caution

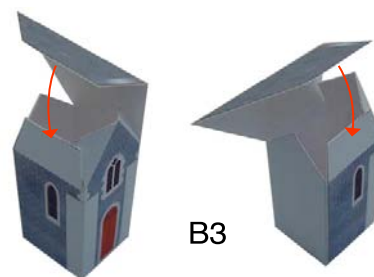
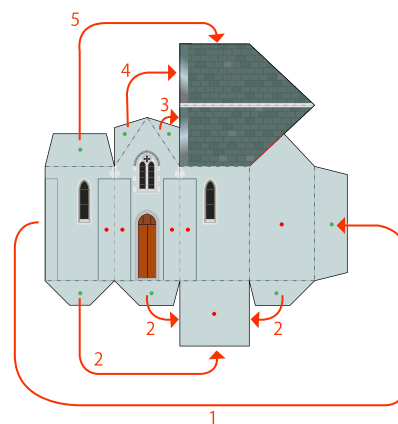
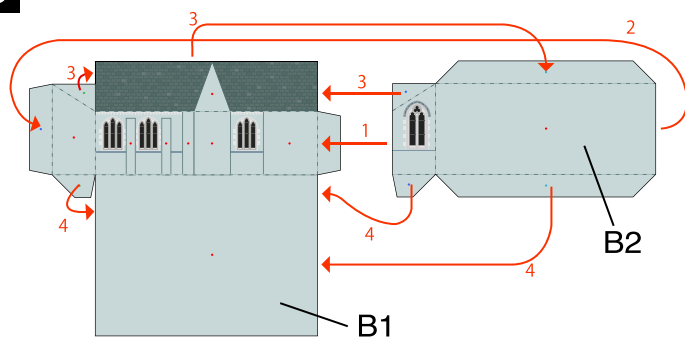


Glue, scissors and other tools may be dangerous to young children so be sure to keep them out of the reach of young children.

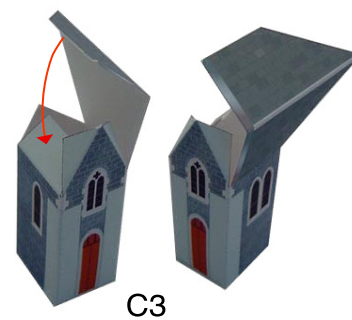
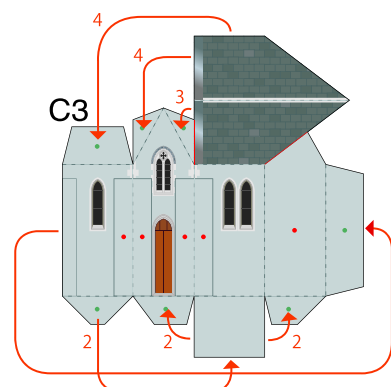
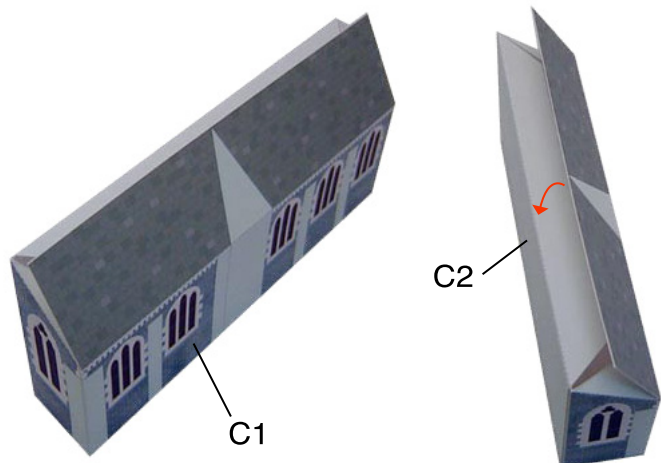
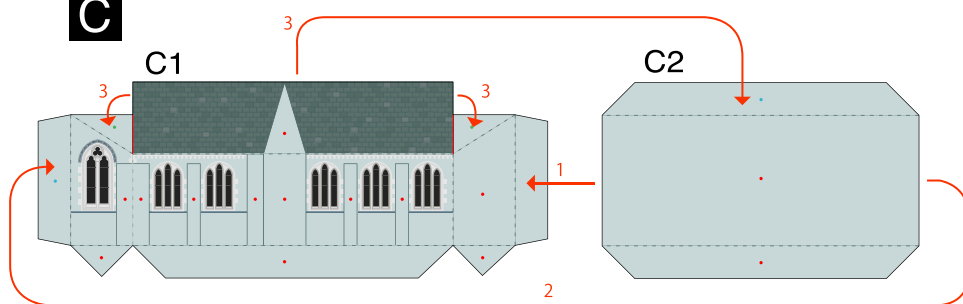
**A**



**B**

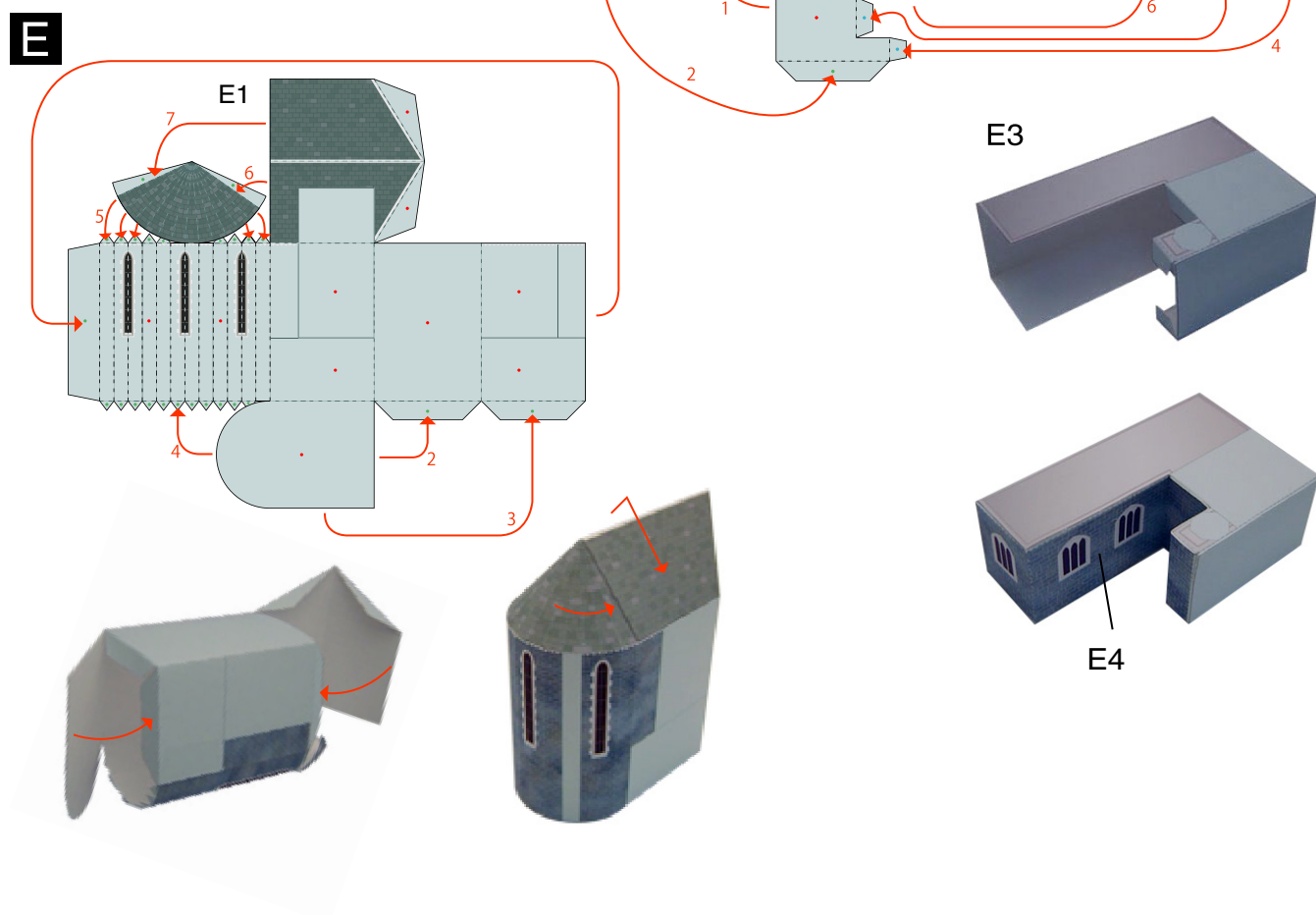
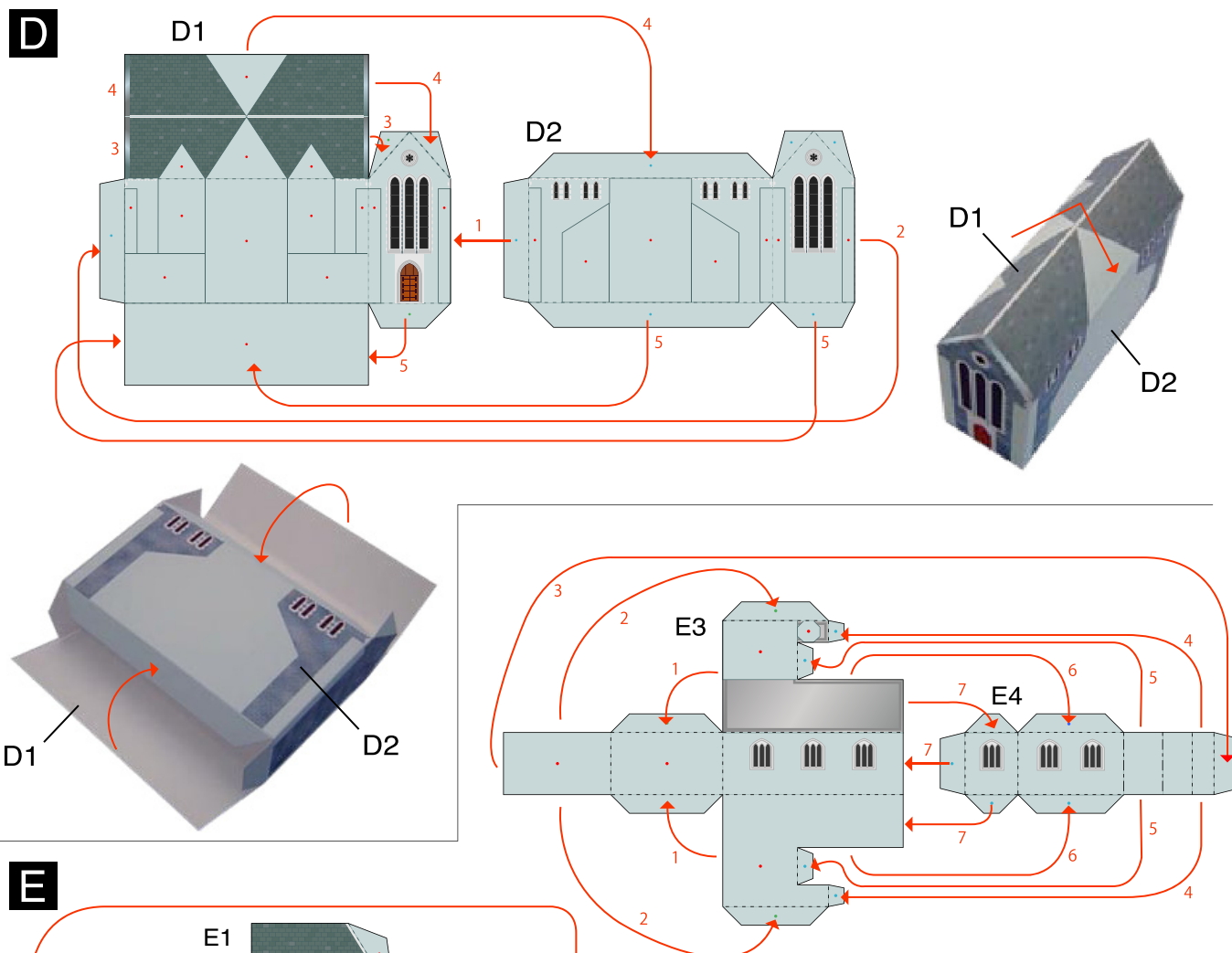


**C**

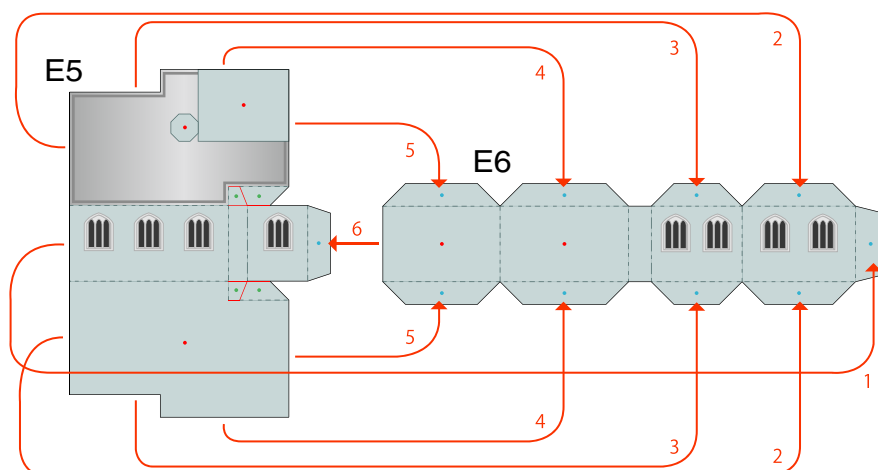


**Canon**

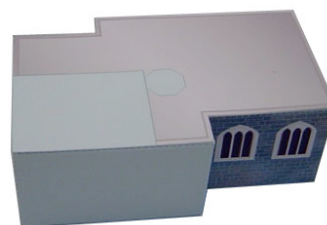
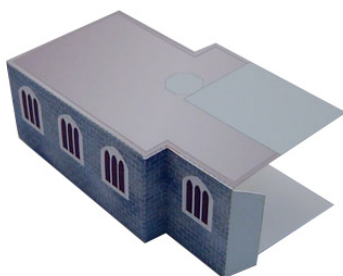
**Canon**



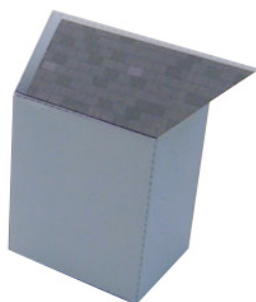
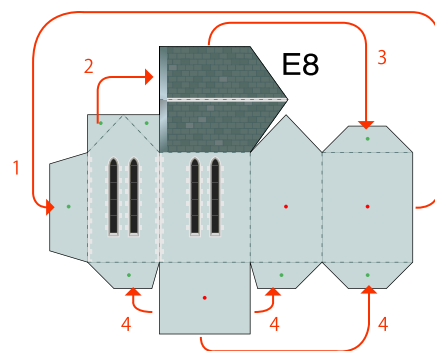
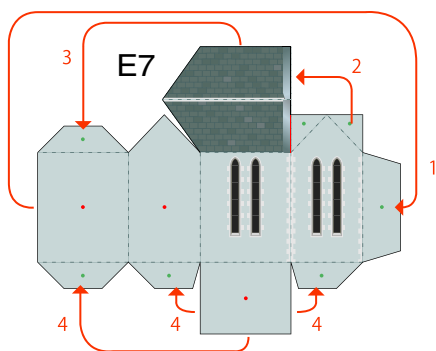
**E**



E5

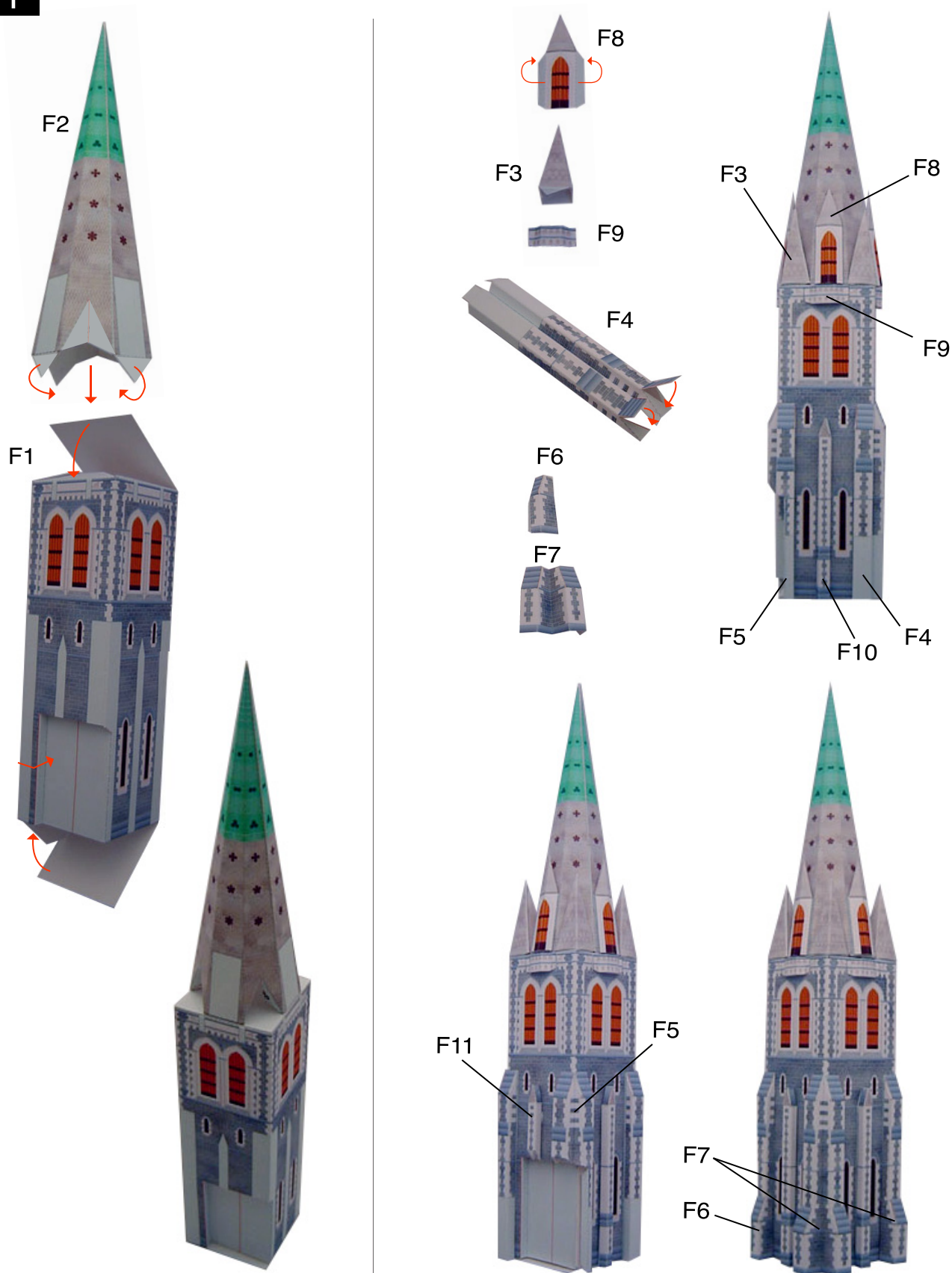


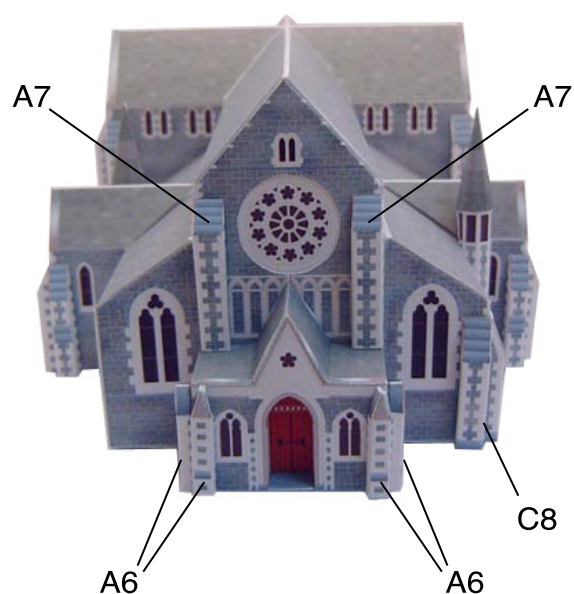
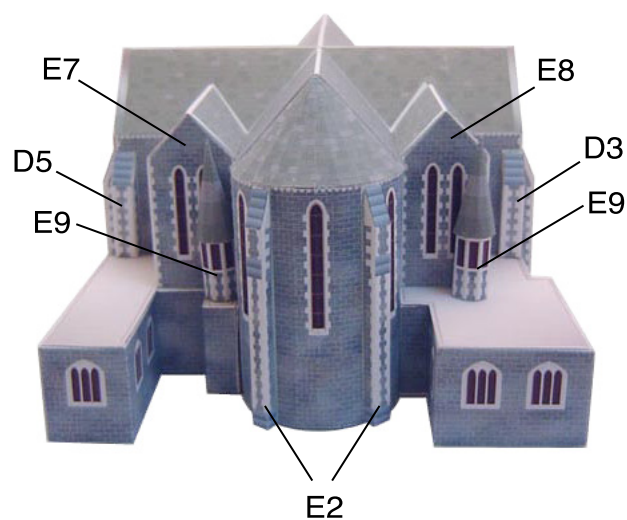
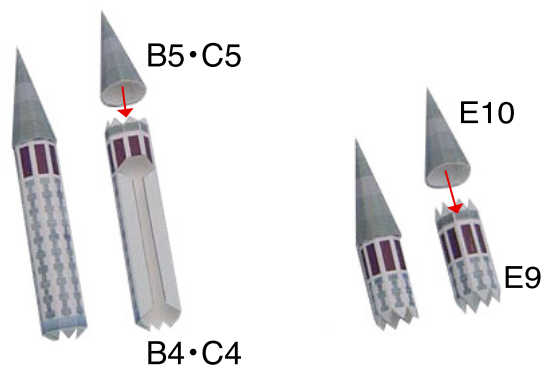
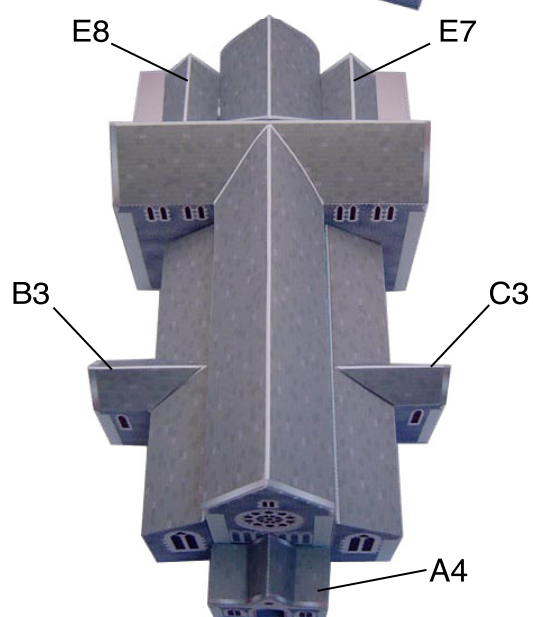
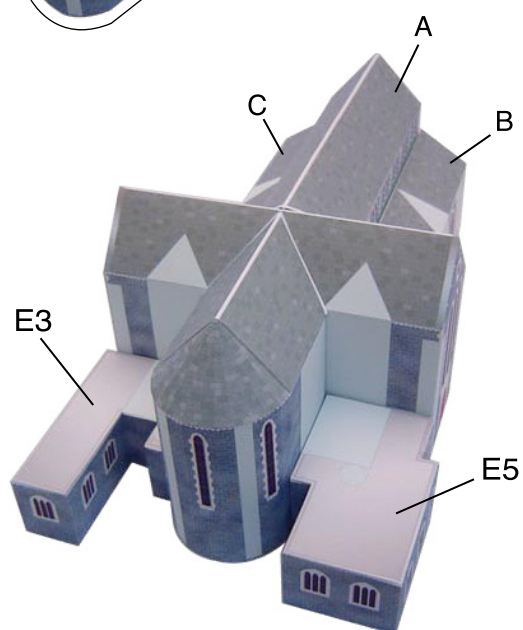
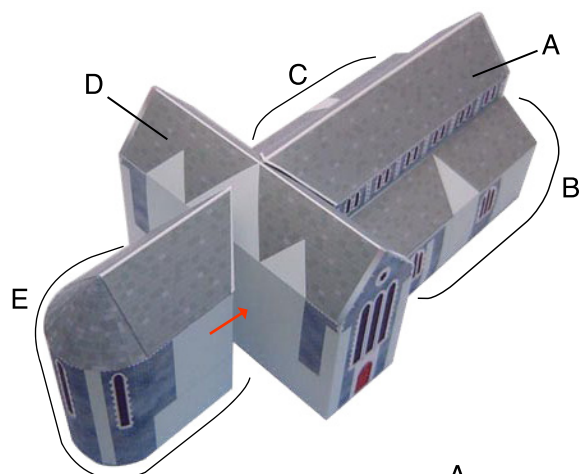
E5-E6





**F**

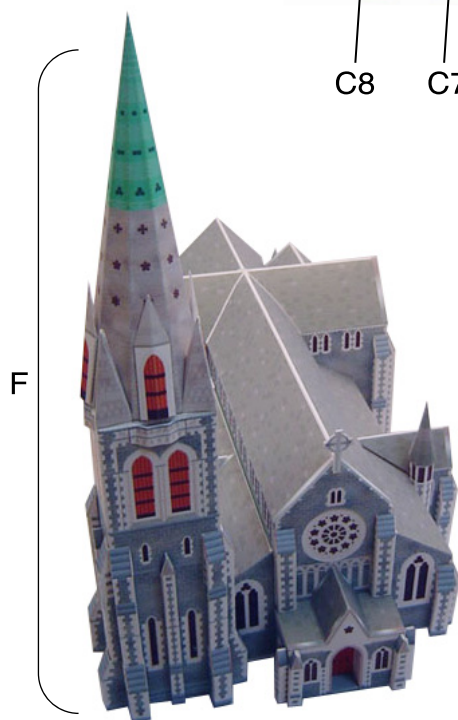
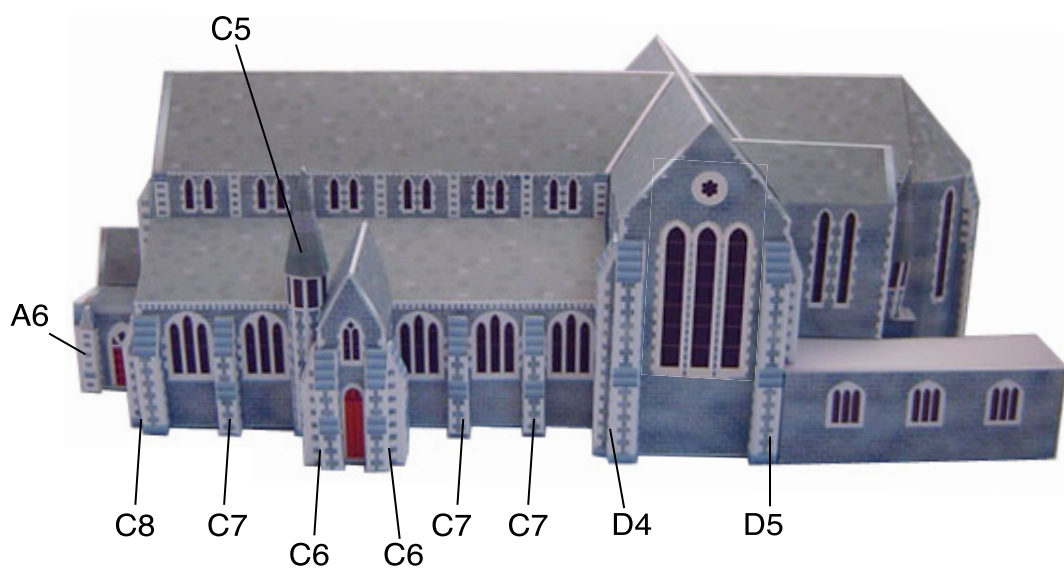
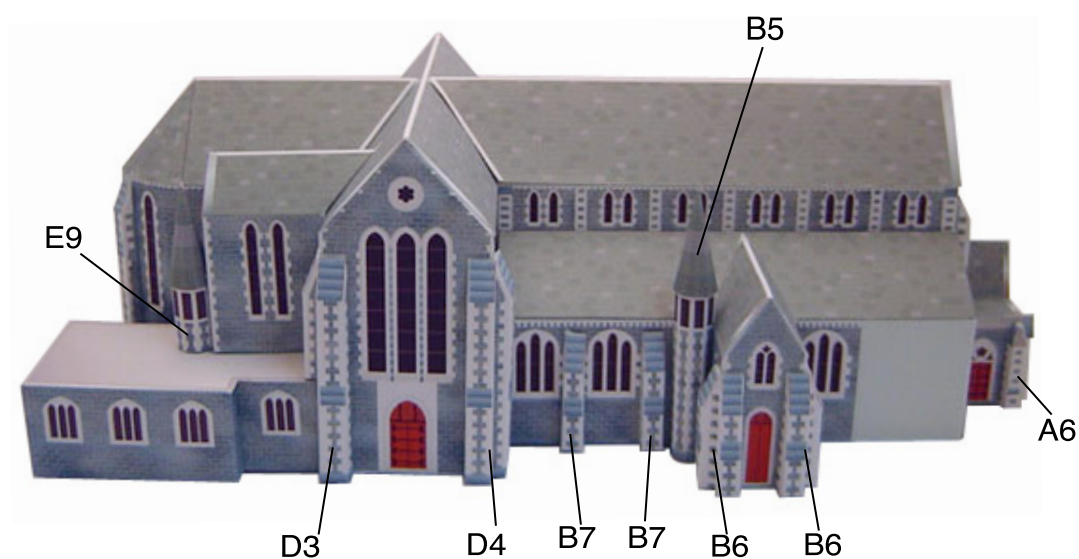




# New Zealand ChristChurch Cathedral : Assembly Instructions

Canon

© Canon Inc. © K.Kanekawa / Y.Nakamura





# New Zealand ChristChurch Cathedral : Assembly Instructions

Canon

© Canon Inc. © K.Kanekawa / Y.Nakamura

