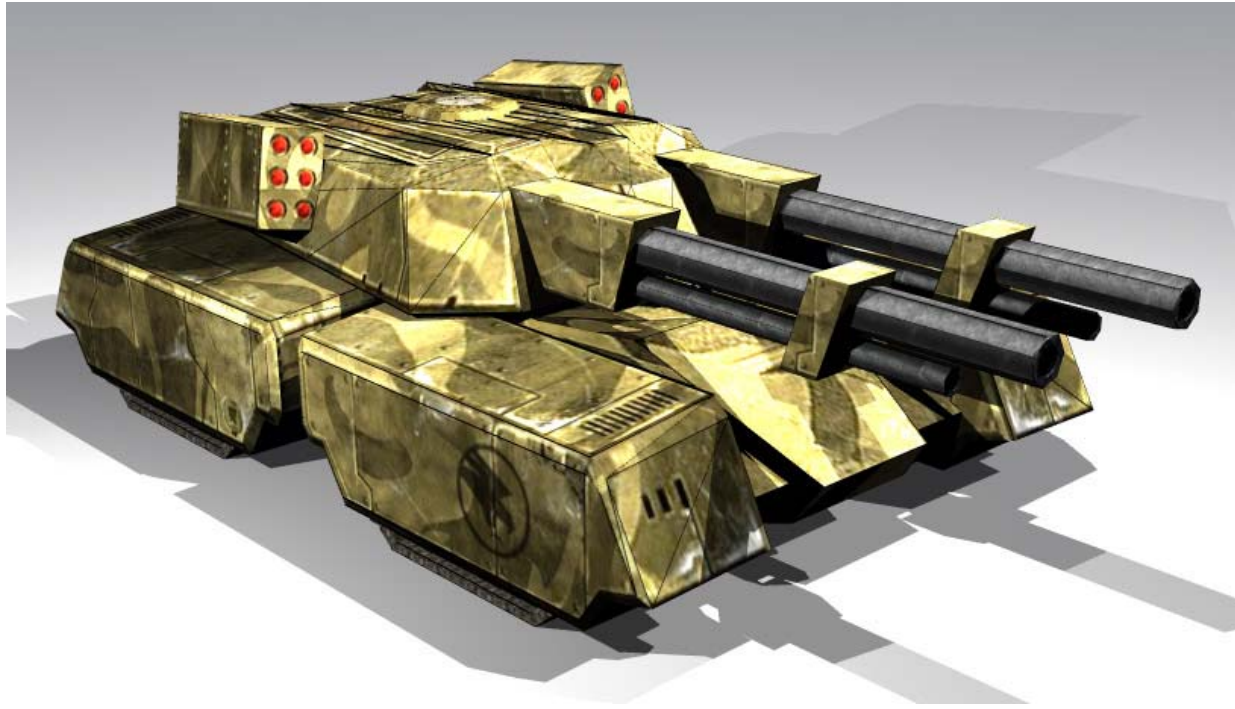


# Command and Conquer Papercrafts

[www.candcpapercraft.blogspot.com](http://www.candcpapercraft.blogspot.com)

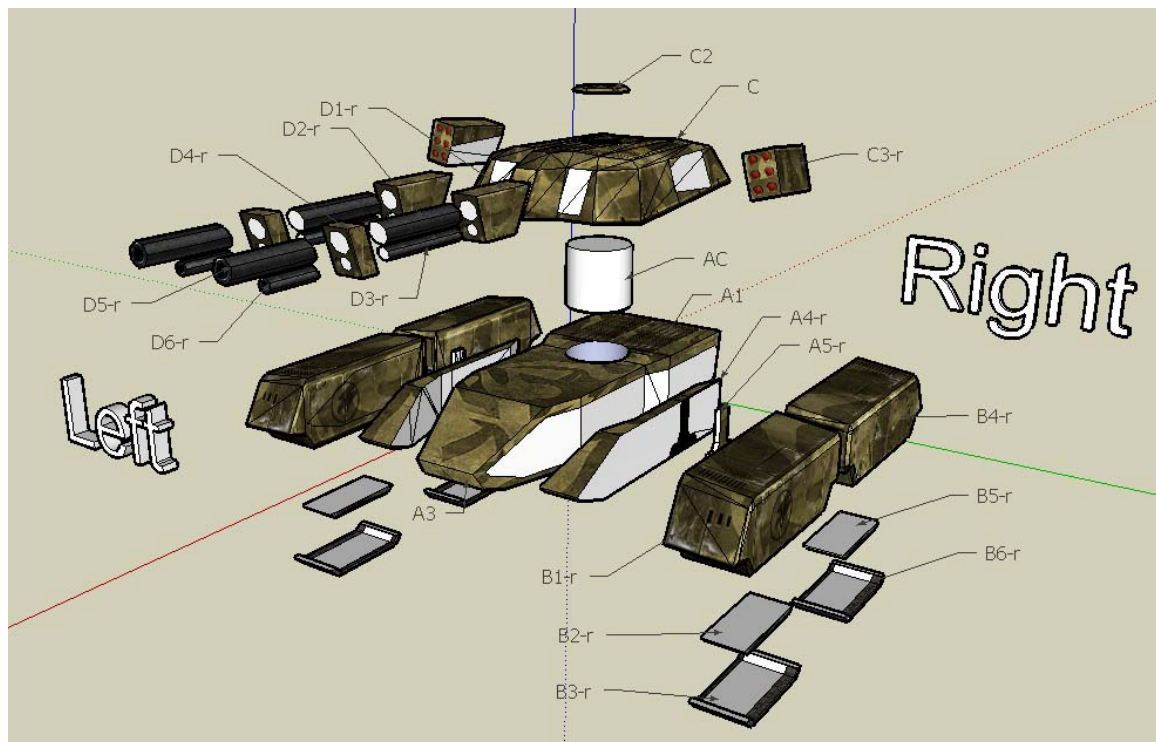


## The Mammoth Mark I

From:  
C&C Renegade

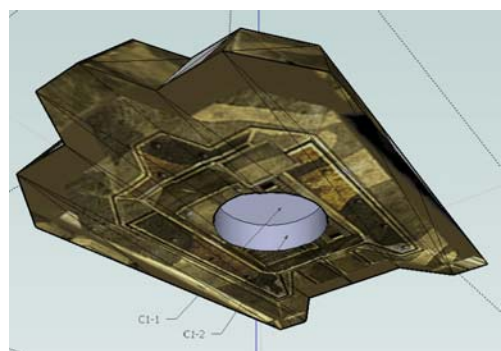
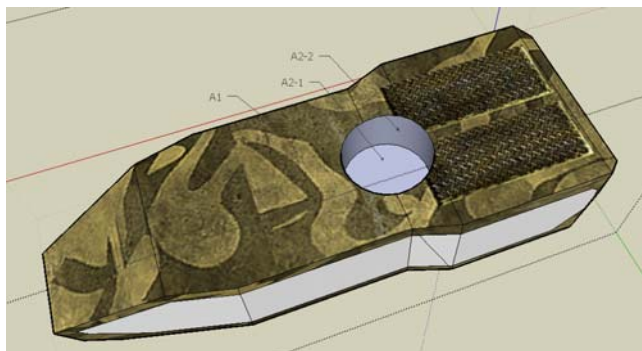
Command and Conquer and associated artworks and models are copyright of Electronic Arts.  
All models here are for non-commercial use and are meant to be shared openly.

# Instructions



The labels show only the parts in the center and the right side of the model, as indicated. Assemble the parts on the left side symmetrically.

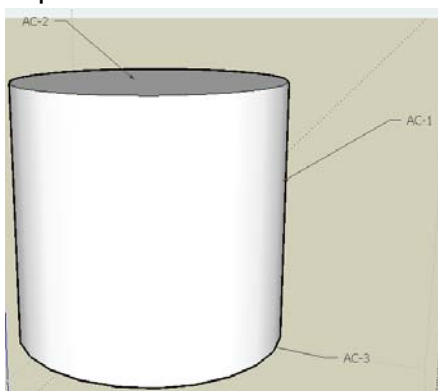
## For part A1 and C:



For part A1, cut out the white circle in the middle, and assemble parts A2-1 and A2-2 onto A1 as shown in the diagram, before assembling A1 and A2 together.

For part C, again, cut out the white circle (not the black one!), and assemble parts C1-1 and C1-2, before closing up C.

## For part AC:

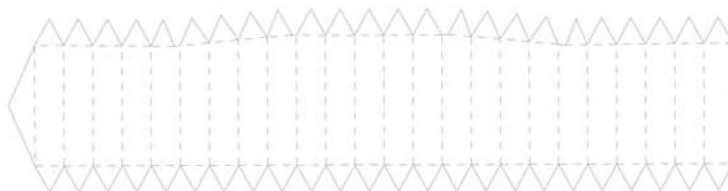
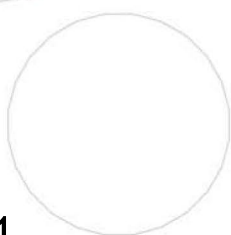


Assemble AC as shown in the diagram. Do not glue AC on to parts A1 and C, just slot them into the grooves. This will result in the turret being rotatable.



A1

A2-1



A2-2



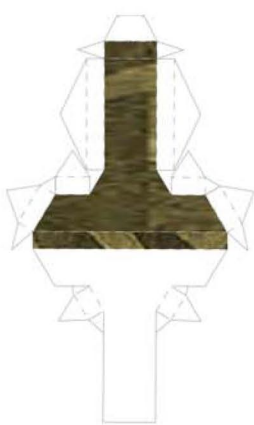
A3



A4-r



A5-r



A5-l

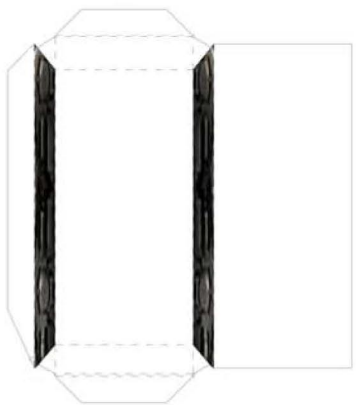


A4-l

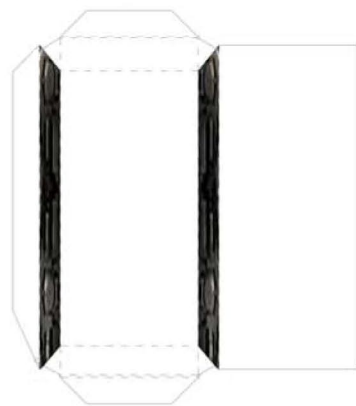




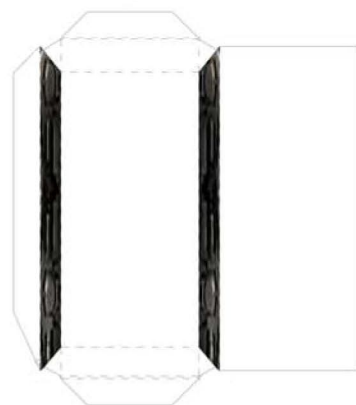
B2-r



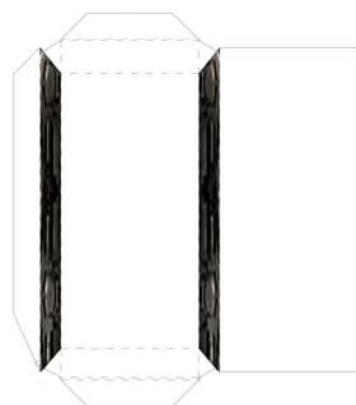
B5-r



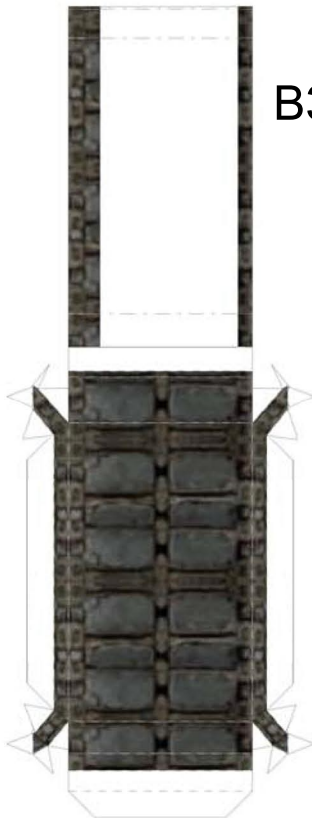
B2-l



B5-l



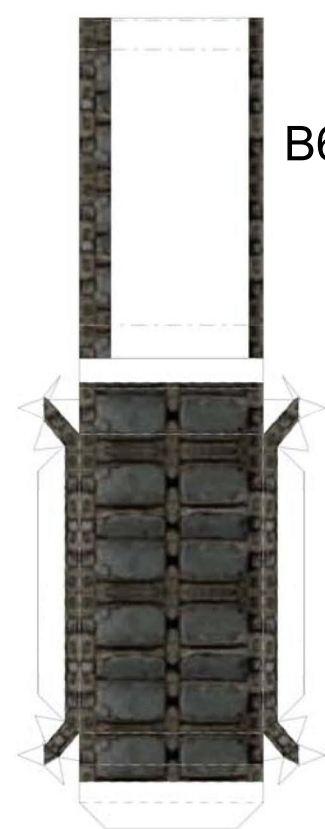
B3-l



B3-r



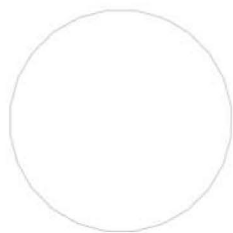
B6-l



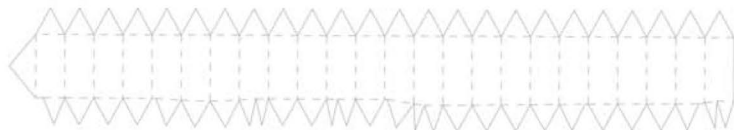
B6-r



C1-1



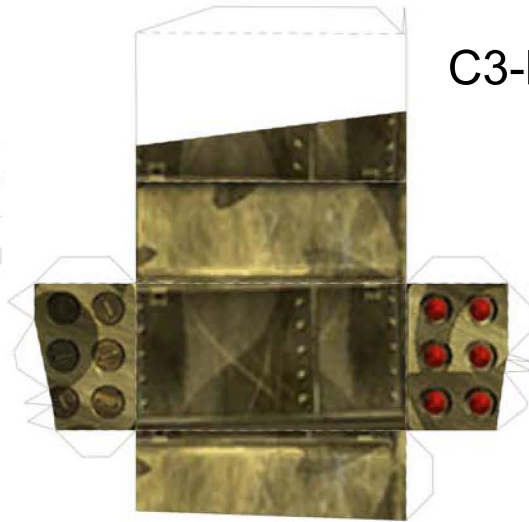
C1-2



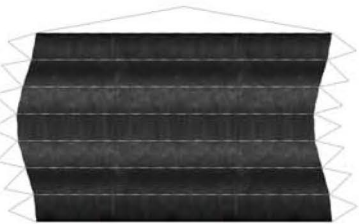
C3-r



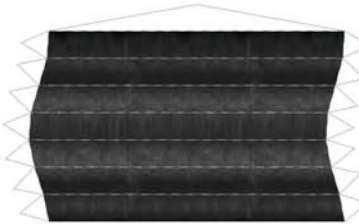
C3-l



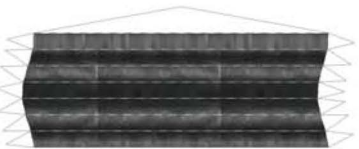
D2-l



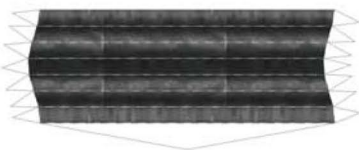
D2-r



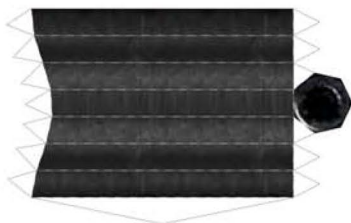
D3-r



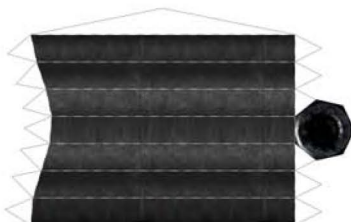
D3-l



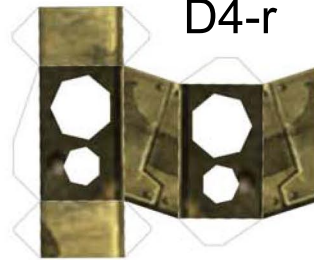
D5-l



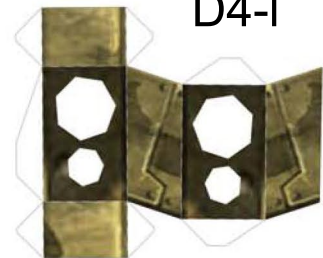
D5-r



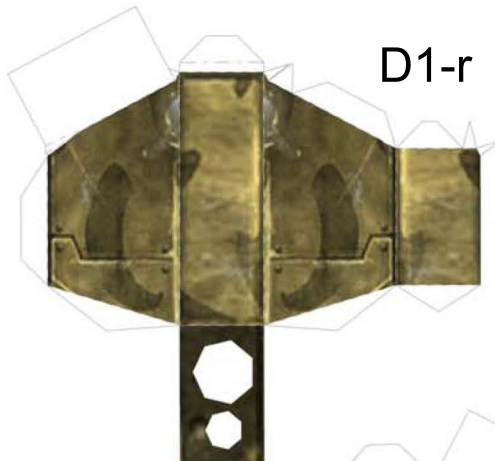
D4-r



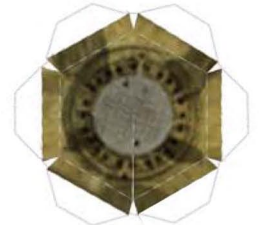
D4-l



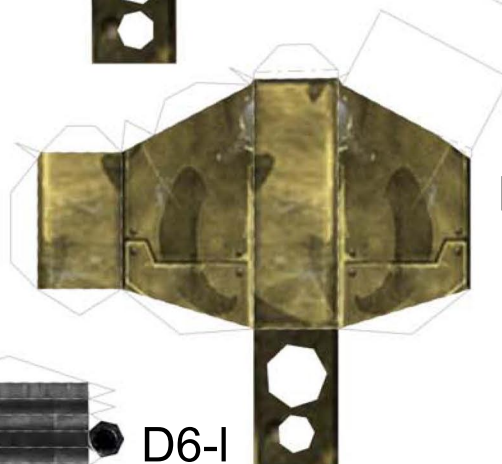
D1-r



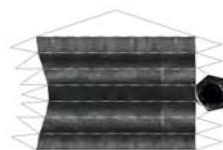
C2



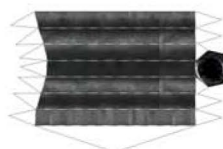
D1-l



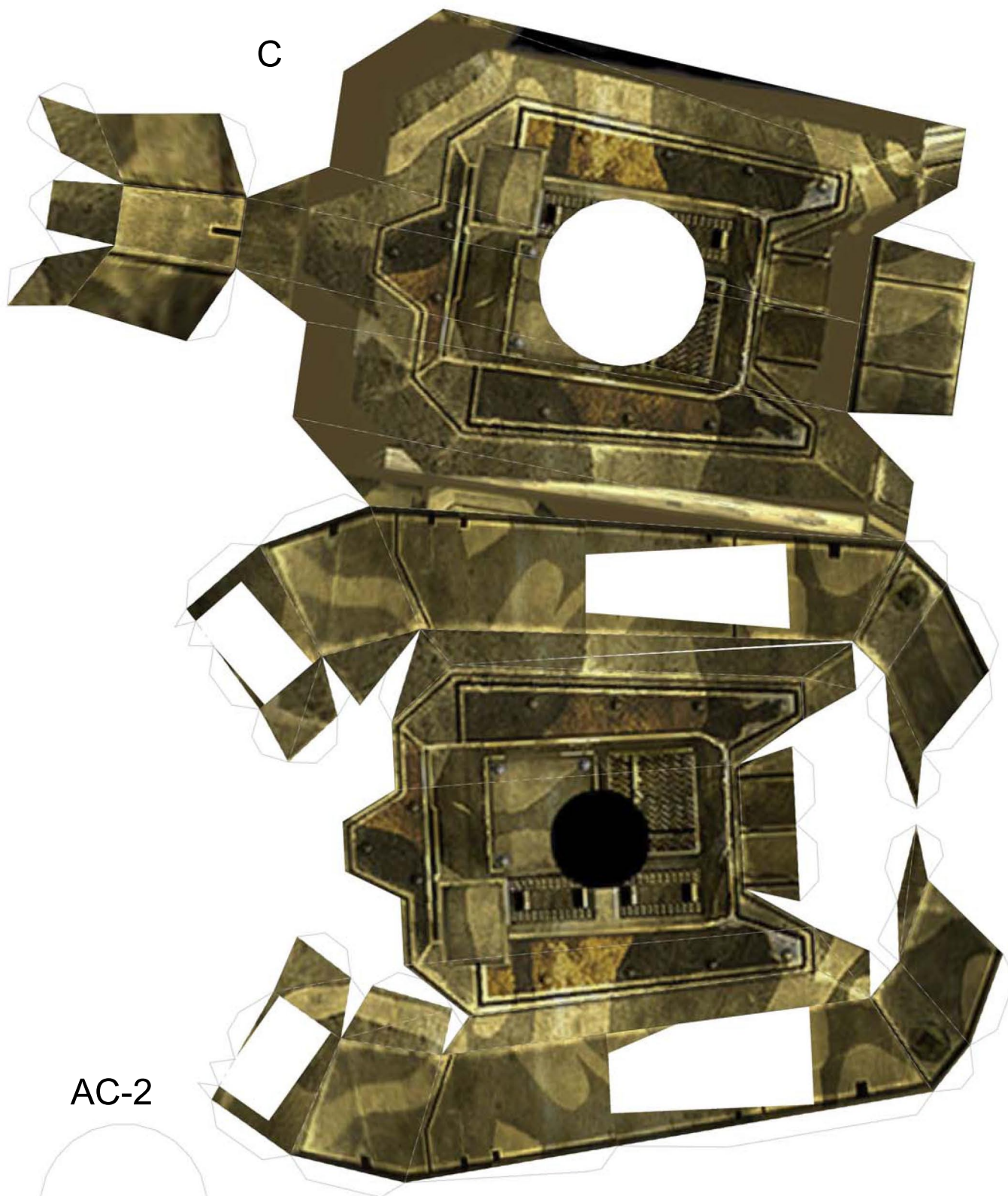
D6-l



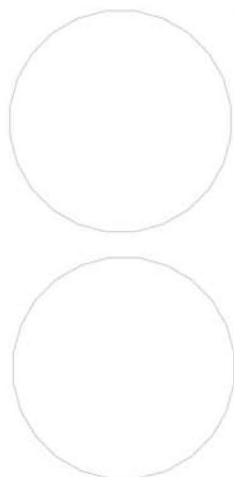
D6-r



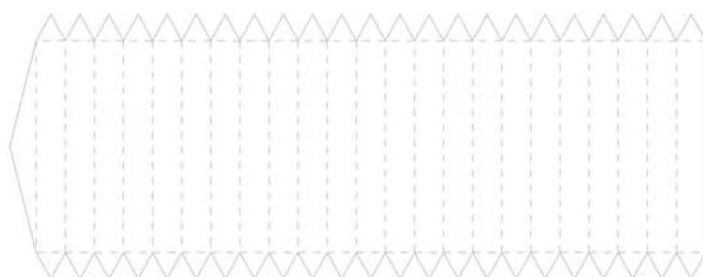




AC-2

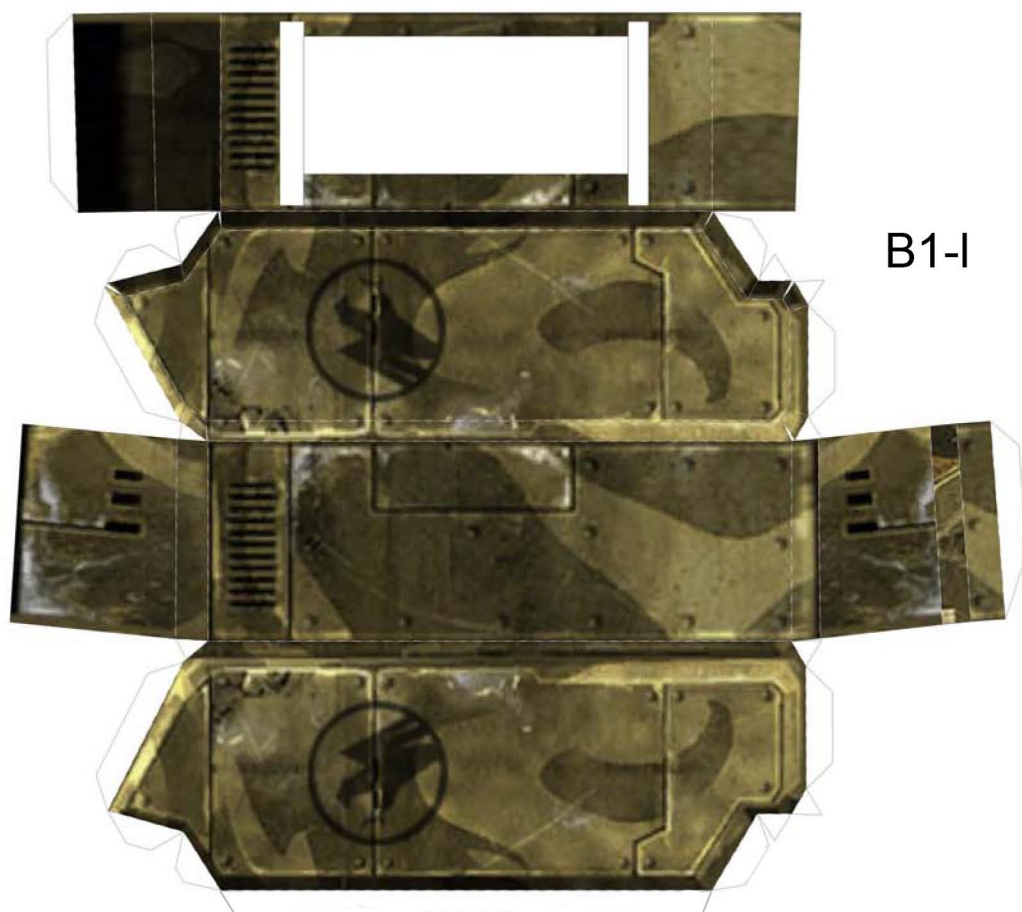


AC-3

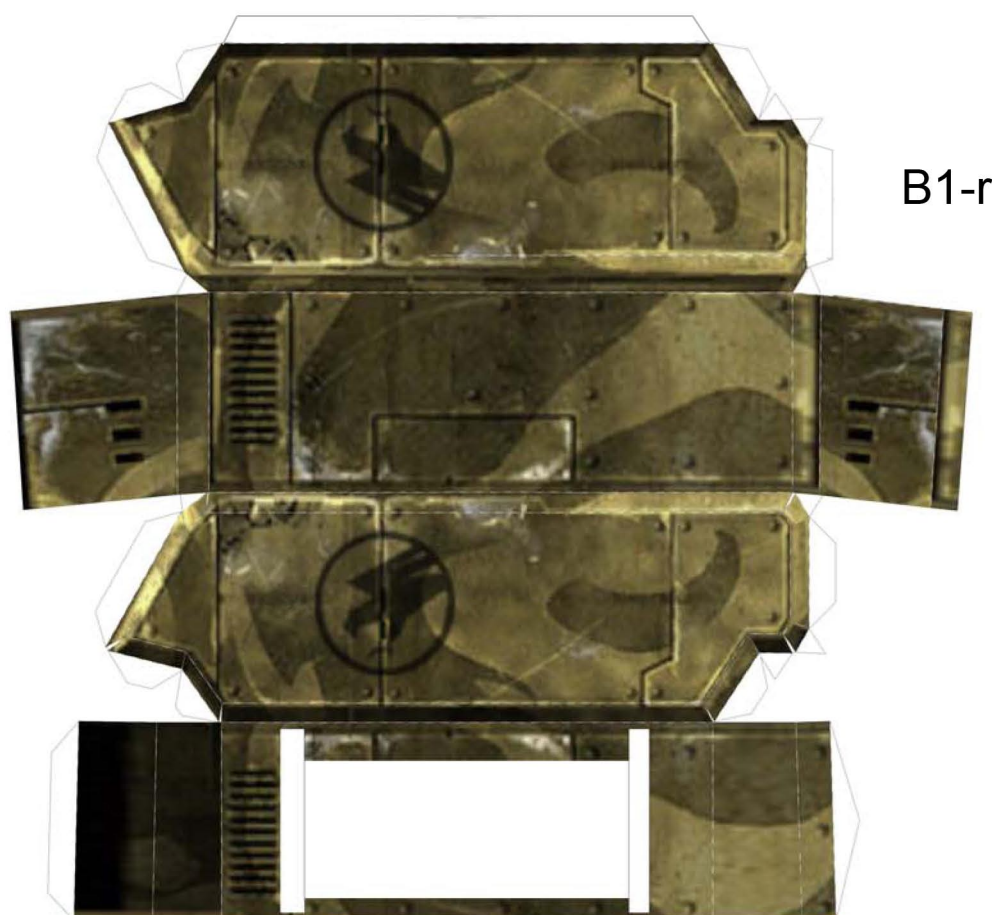


AC-1

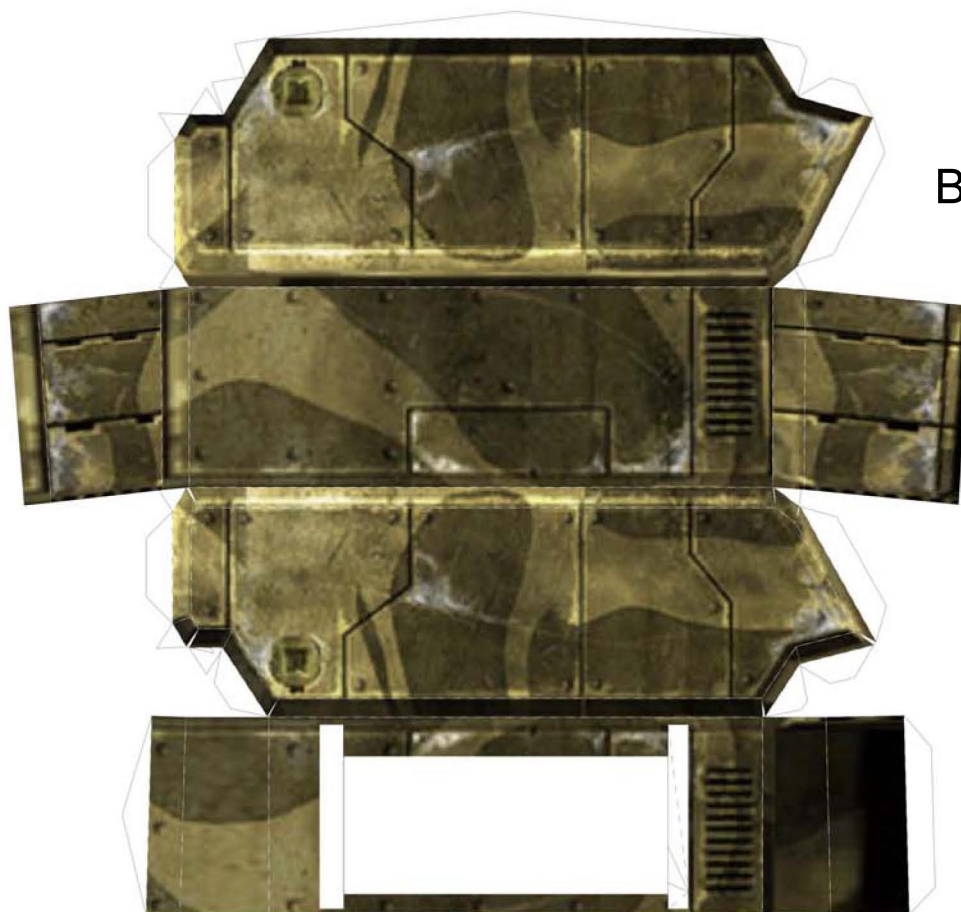




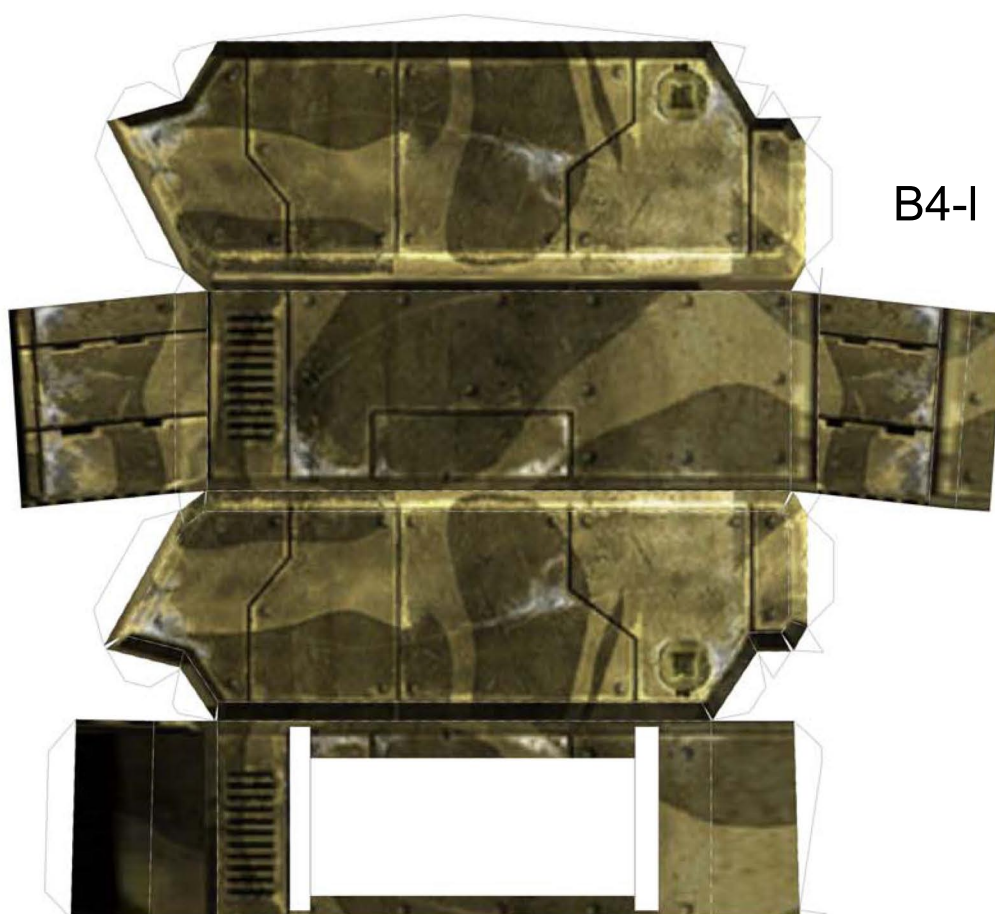
B1-l



B1-r



B4-r



B4-l