



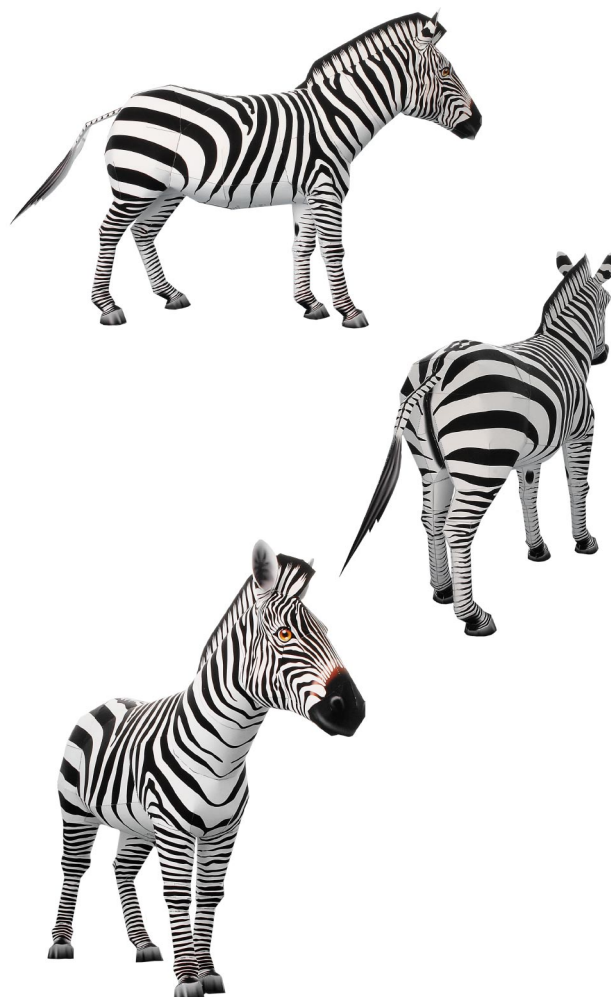
Zebra



- Mammalia Perissodactyla Equidae
- Length (incl. tail): Approx. 2 to 2.4m (approx.6.6 to 7.7 feet)
- Weight: Approx.200 to 300kg (approx. 441 to 661.3 lbs)
- Habitat: Africa (ranging from northern Mozambique to Tanzania and Kenya)

Known for their distinctive black and white stripes, zebras are herbivorous animals from the equidae family. There are various theories about the functions of zebras' stripes, but it is thought that the depth of color and number of stripes help zebras to identify members of their herd, and that the stripes can also be used as camouflage when hiding from carnivorous predators.

Zebras usually live in groups consisting of one stallion and several mares and their foals. However, in the dry season they often move in herds of several hundred, traversing the land seeking water and fresh grasses. While on the move, they let out cries that are higher pitched than a horse's, and more similar to a donkey's bray.



Tools

Scissors
Paste, or woodwork glue
Stencil pen, or bodkin
Ruler
Pencil

Notation Key

— Scissors line
..... Mountain fold
- - - Valley fold
+ Glue spot
⊙ Glue reverse side
A1, B1 Parts No.

◆ The Assembly instructions are divided into four blocks: A (head and neck), B (body), and C (legs and back). Follow the instructions for each block to assemble your zebra.

◆★ marks a basic assembly technique that remains the same regardless of the part.
Instructions are printed only for the first instance.

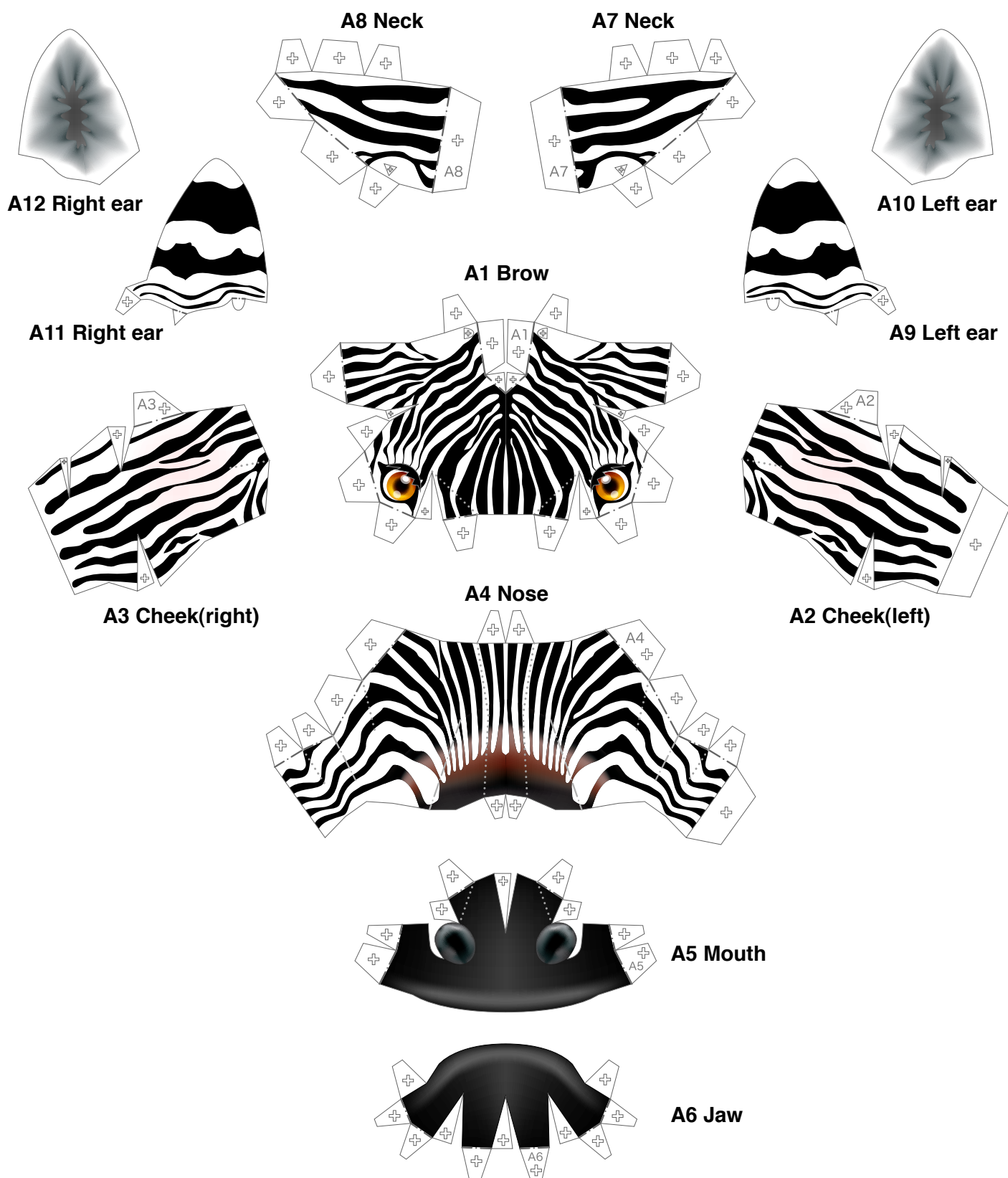
<Caution>

- ✂ Keep scissors and glue away from small children.
- ✂ Be careful not to cut your fingers when using scissors.



Head parts

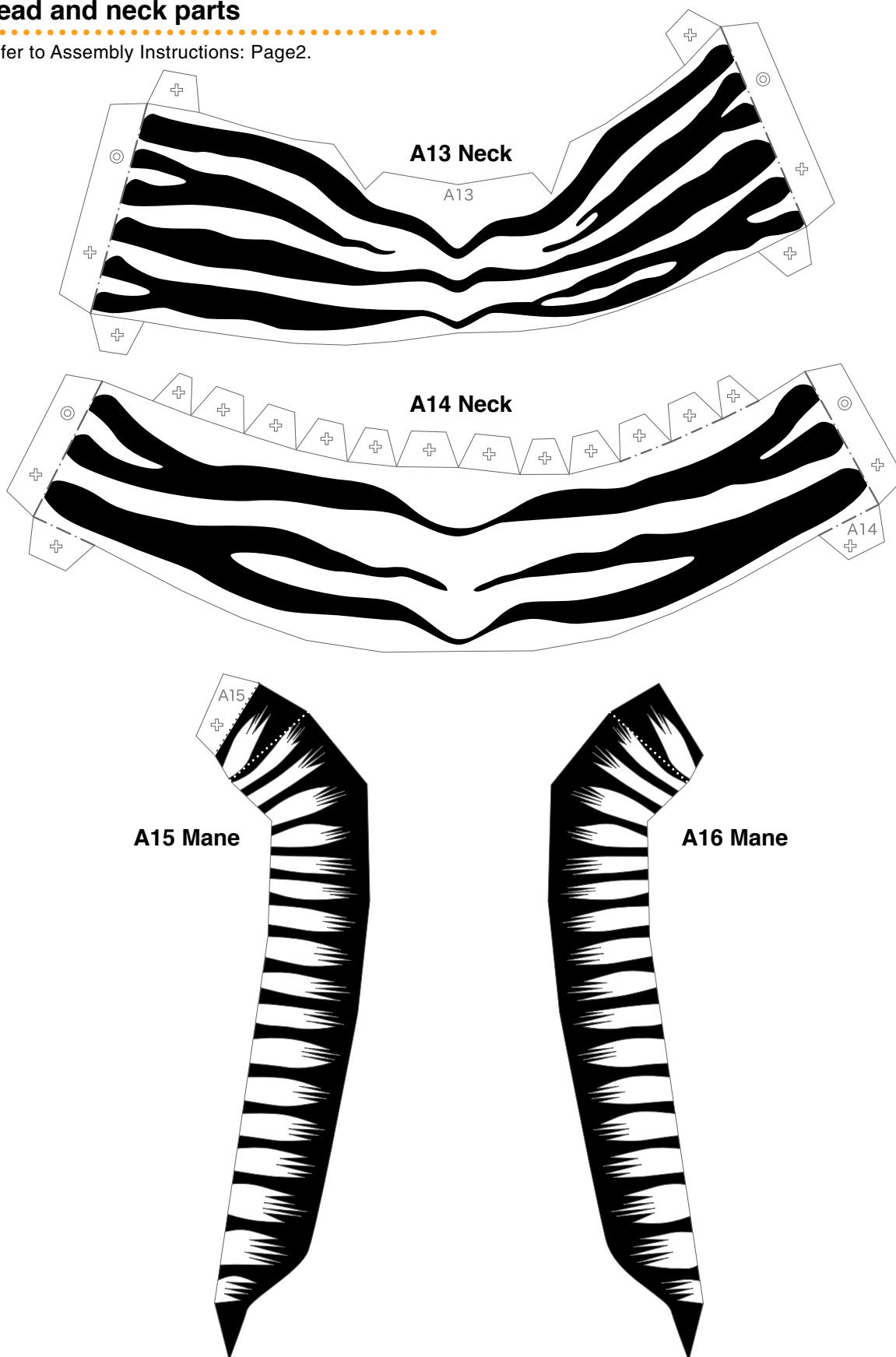
Refer to Assembly Instructions: Page1 / Page2.





Head and neck parts

Refer to Assembly Instructions: Page2.

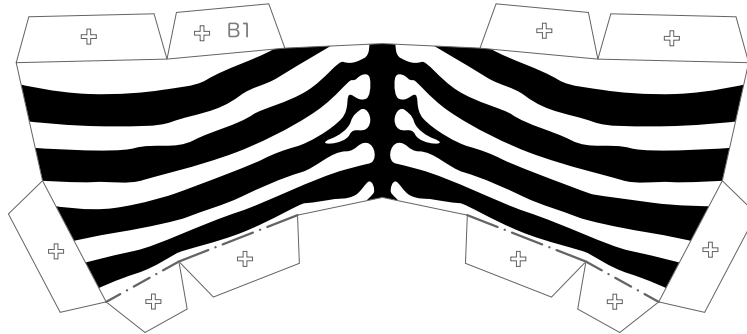




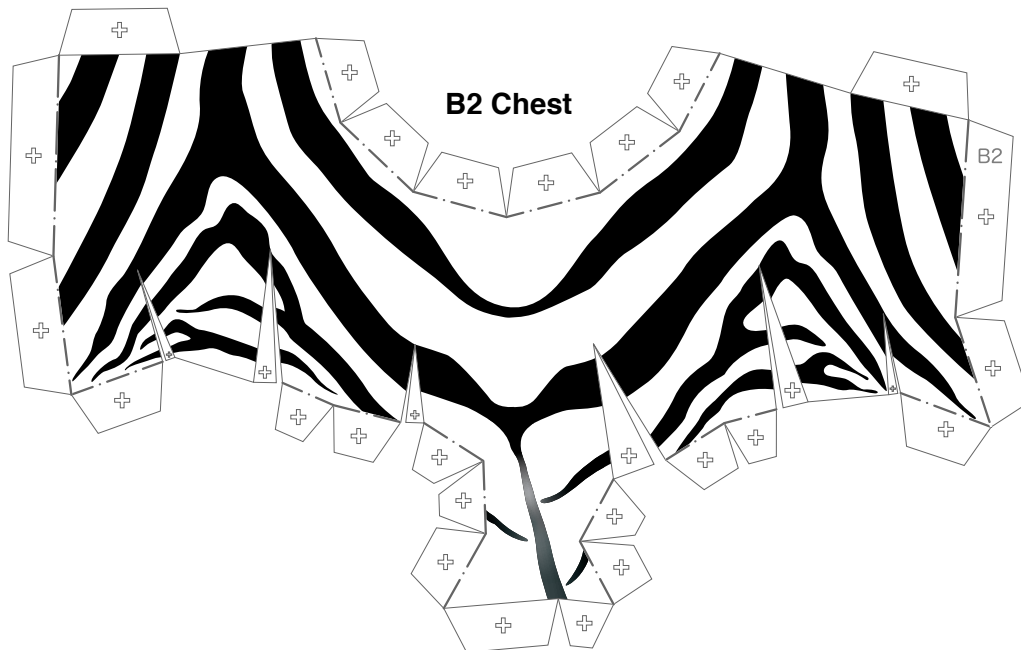
Body parts

Refer to Assembly Instructions: Page3.

B1 Shoulder



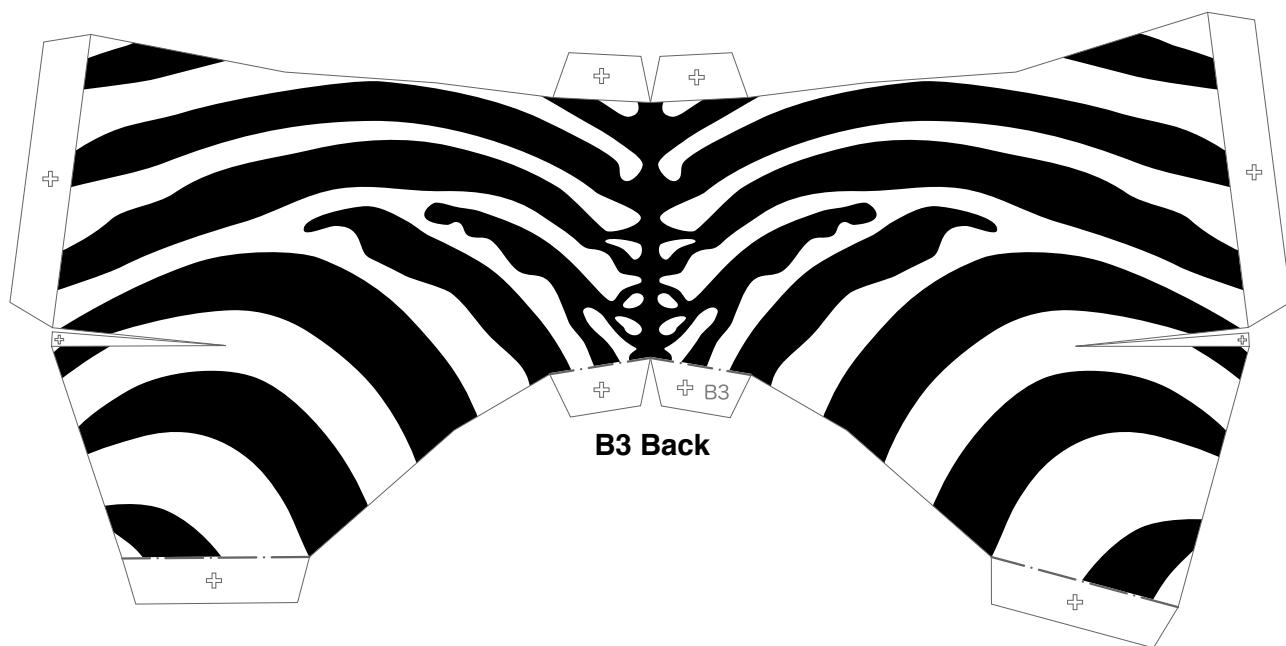
B2 Chest



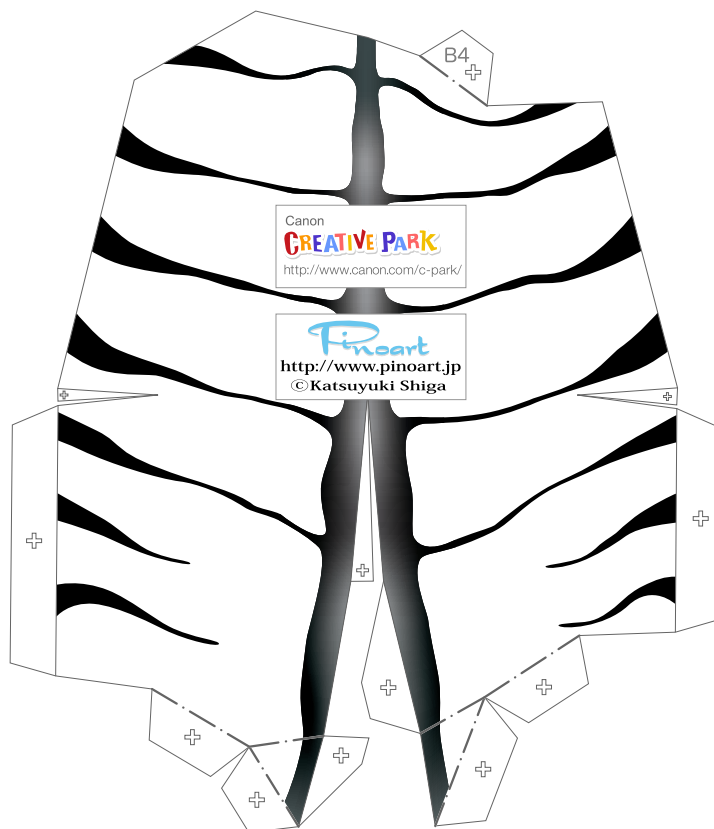


Body parts

Refer to Assembly Instructions: Page3.



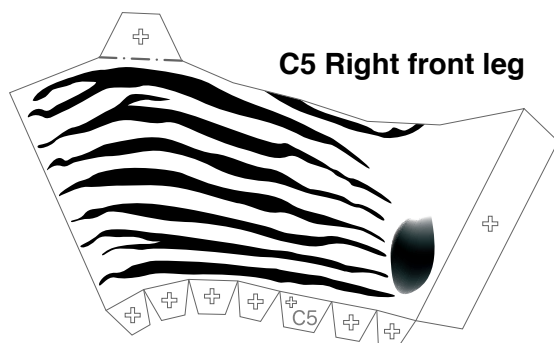
B3 Belly



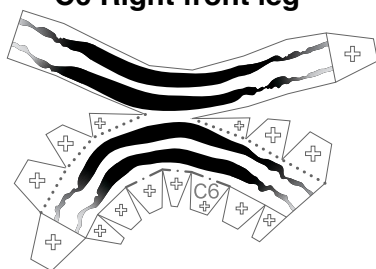


Leg and back parts

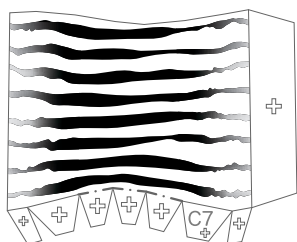
Refer to Assembly Instructions: Page3 / Page4.



C6 Right front leg



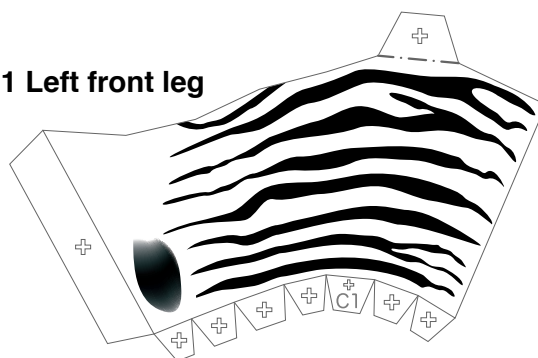
C7 Right front leg



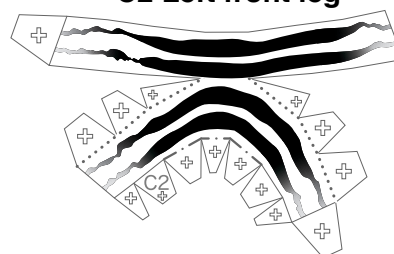
C8 Right front leg



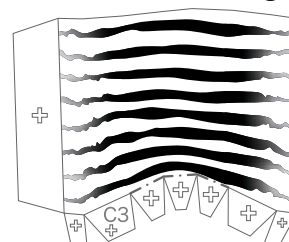
C1 Left front leg



C2 Left front leg



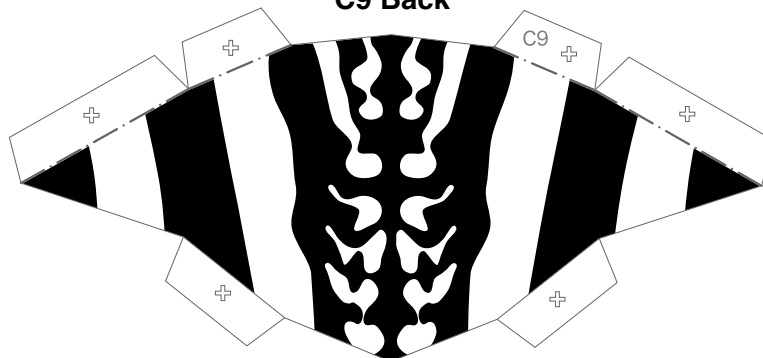
C3 Left front leg



C4 Left front leg



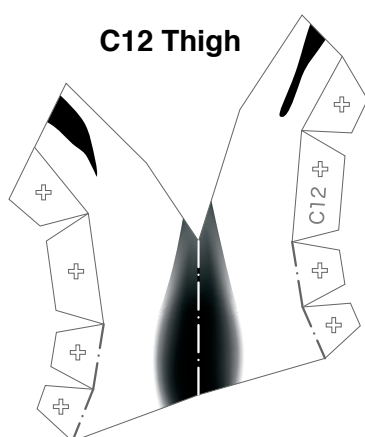
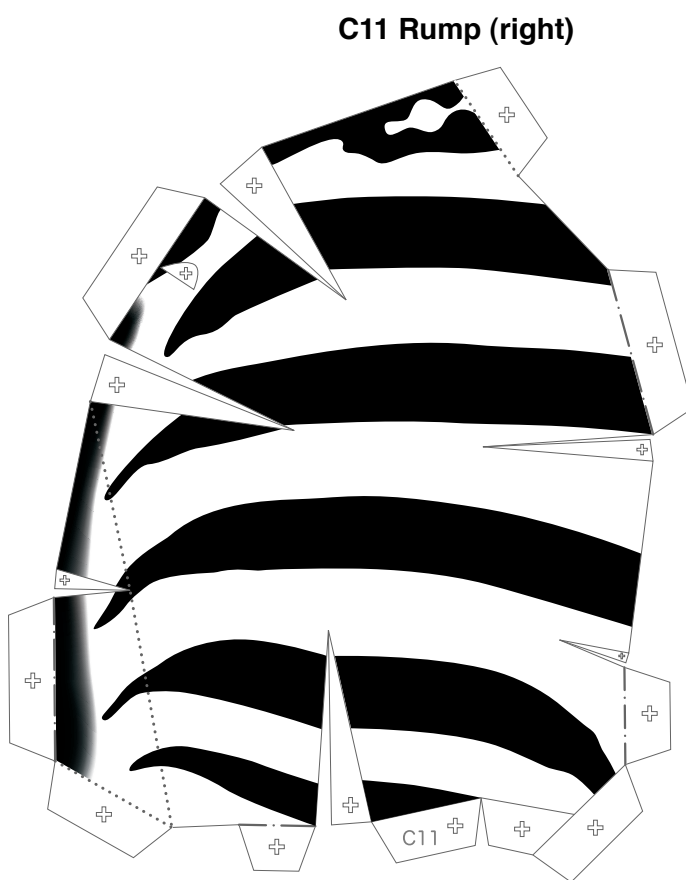
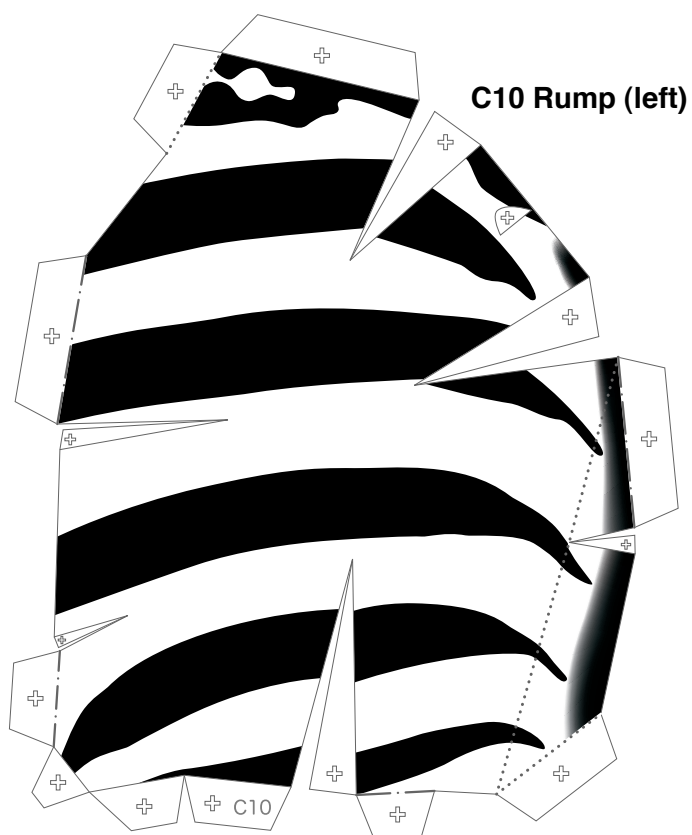
C9 Back





Leg and back parts

Refer to Assembly Instructions: Page4.



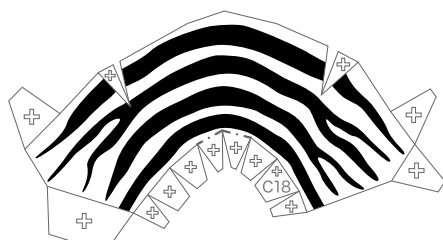


Leg and back parts

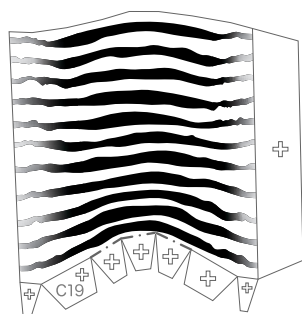
Refer to Assembly Instructions: Page4.



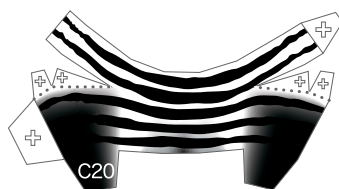
C17 Right hind leg



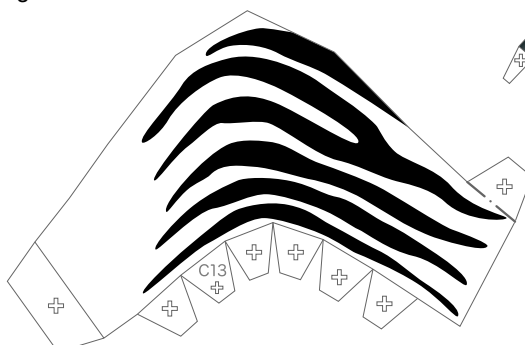
C18 Right hind leg



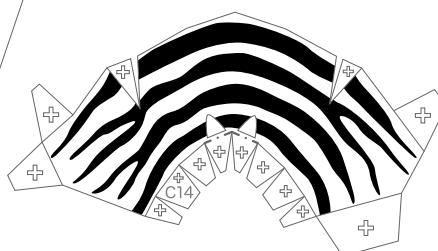
C19 Right hind leg



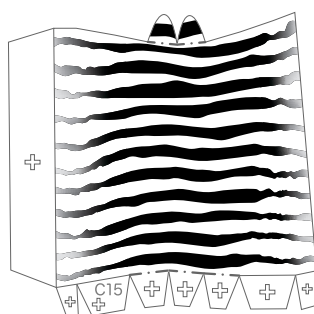
C20 Right hind leg



C13 Left hind leg



C14 L
eft hind leg



C15 Left hind leg



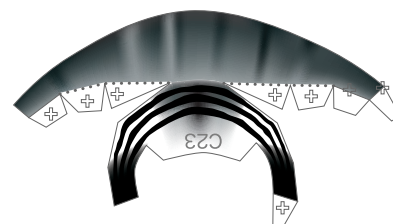
C16 Left hind leg



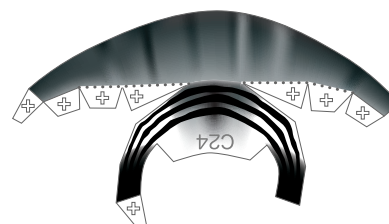
C21 Left front leg



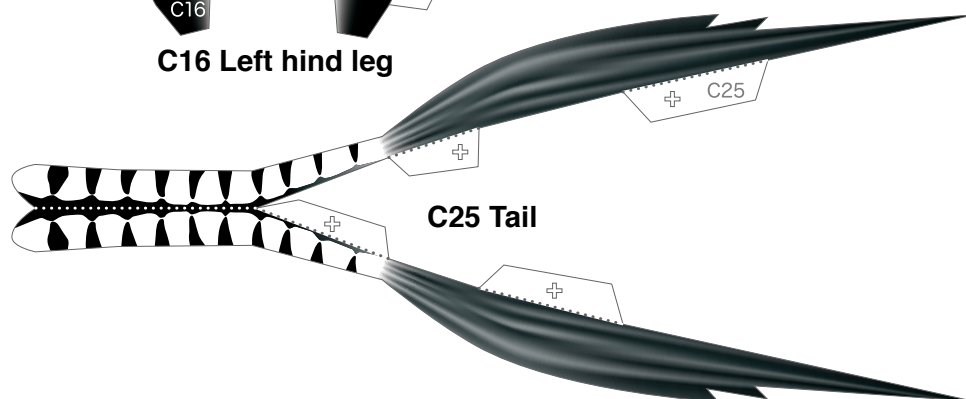
C22 Right front leg



C23 Left hind leg



C24 Right hind leg



C25 Tail