



The Thoroughbred is a breed of horse first developed during the 17th and 18th centuries in England, by crossbreeding Arabians with native horses to produce superior racing horses.

The Thoroughbred has been called the ultimate work of art ever produced by man, and has a height of around 160 to 170cm (to the shoulders), weighing between 450 and 500kg. Its well-developed chest and hindquarters make it a fast runner. It can run at speeds of up to 60 or 70km/h for minutes on end, even with a 50kg rider on its back.

However, its thin legs are prone to injuries.

In terms of temperament, it is a very delicate horse, sensitive to loud noises and bright lights.

- Parts list (pattern): Ten A4 sheets
- Assembly Instructions: Three A4 sheets

*Read the Assembly Instructions carefully in page order referring to the page numbers on the parts list.

*It is easy to get pieces mixed up if you cut them all out at once, so just cut the pieces as you need them.

*l indicates a part for the left side, and r is for the right. For example, Er01 would be a part for the right side, but E01 would mean that it can be used on either the right or the left side.

Instructions

<p>----- Mountain fold line (dotted line)</p> <p>● Make a mountain fold.</p>	<p>————— Cut line (solid line)</p> <p>● Cut out.</p>	<p>----- Valley fold line (dotted and dash line)</p> <p>● Make a valley fold.</p>	<p>————— Slot line (solid line)</p> <p>● Cut a slot.</p>
<p>1. Use a set square or ruler and a dried up pen to score along the dotted lines, and fold along them to make creases.</p>		<p>3. Use scissors to cut along the solid line.</p>	
<p>2. Work curves into the pieces using a metal rod before beginning assembly. For small pieces, add curves before cutting them out.</p>		<p>4. The pale-colored numbers on the glue tabs indicate the number of the part to be attached there. Use a spatula for the small glue tabs.</p>	

Tools and Materials



Scissors, set square, glue (such as wood work glue), metal rod, spatula, a used pen, toothpicks, tweezers (useful for handling small parts).

Assembly tip

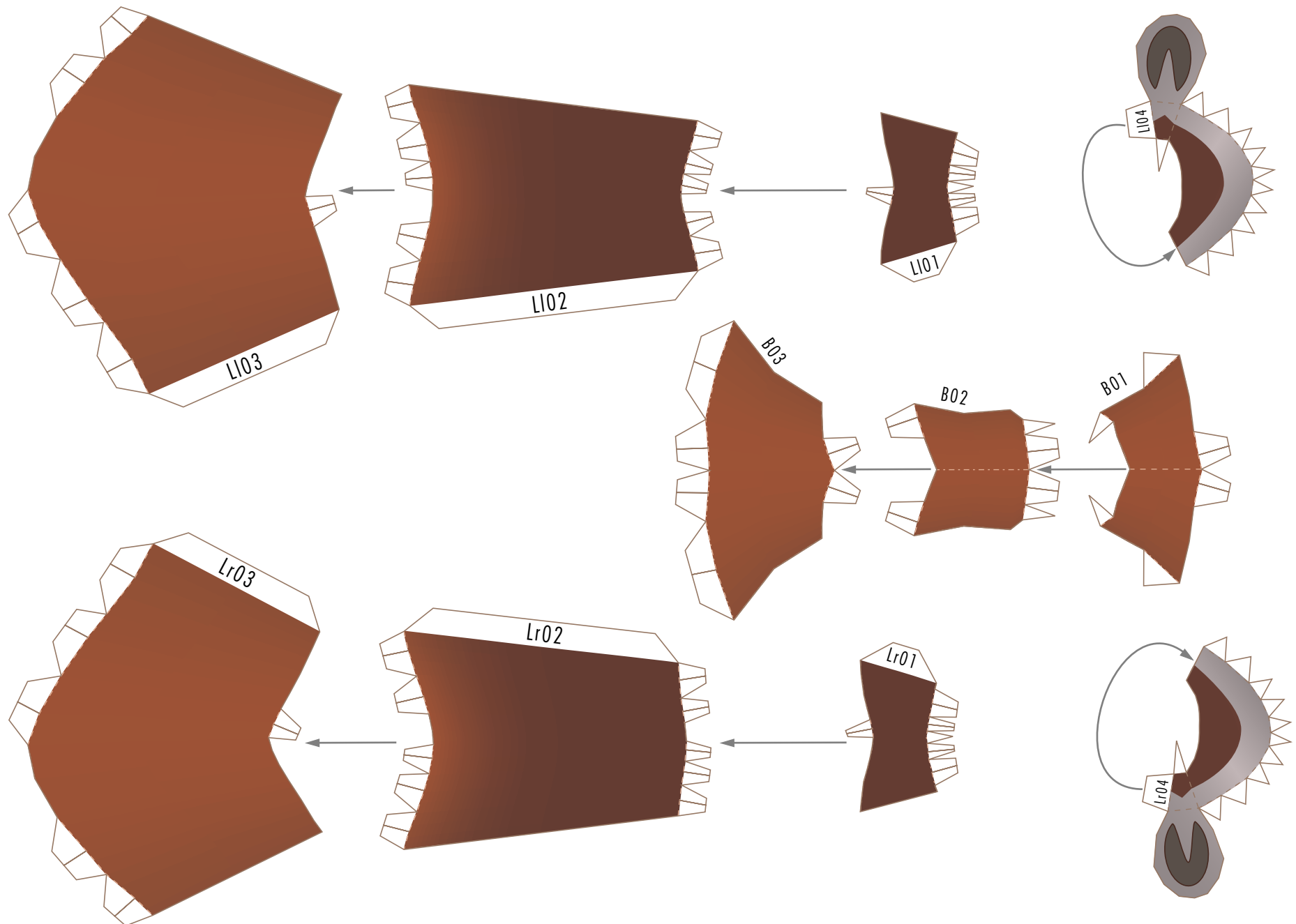


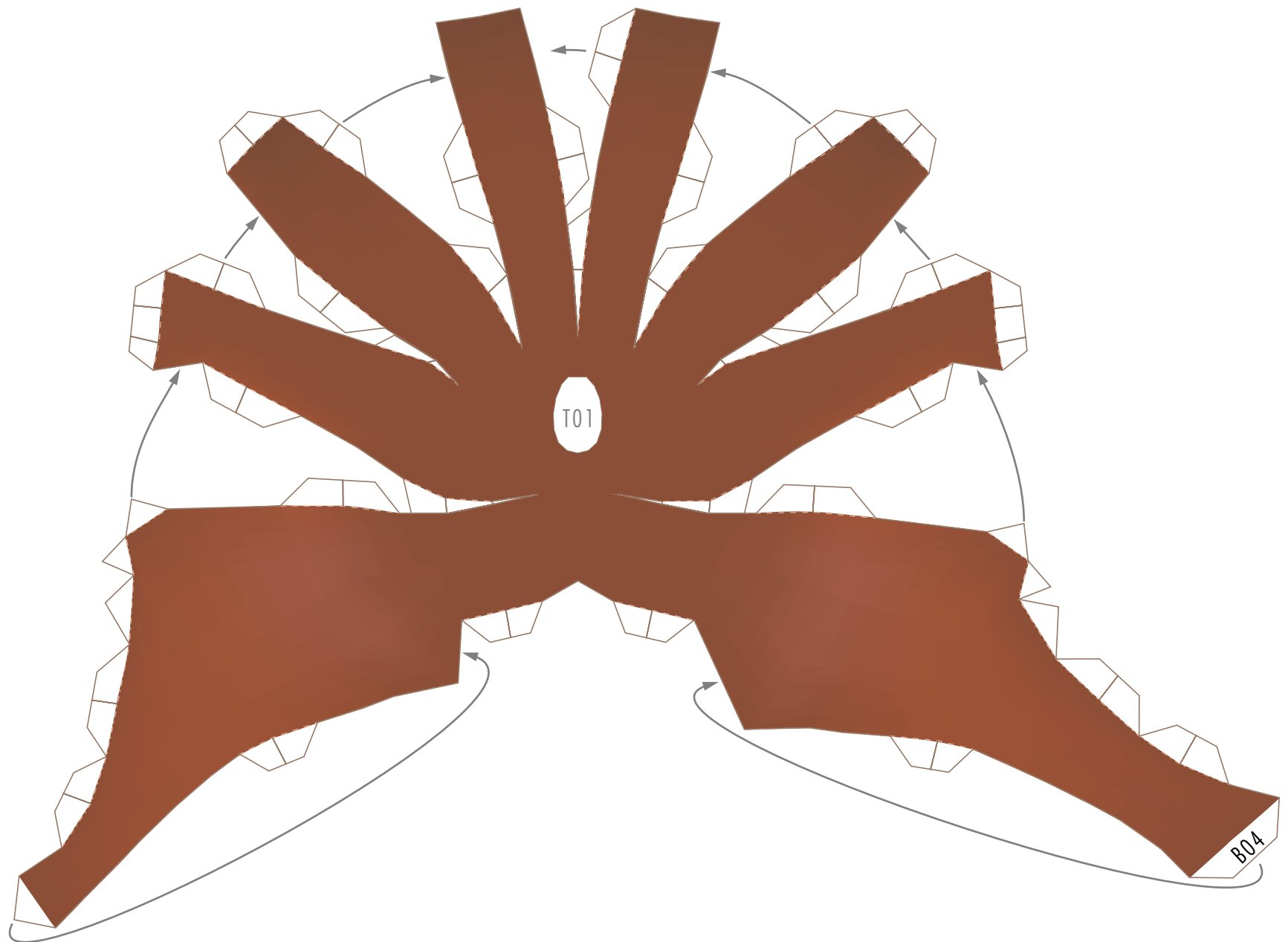
Before gluing, crease the paper along mountain fold and valley fold lines and make sure rounded sections are nice and stiff.

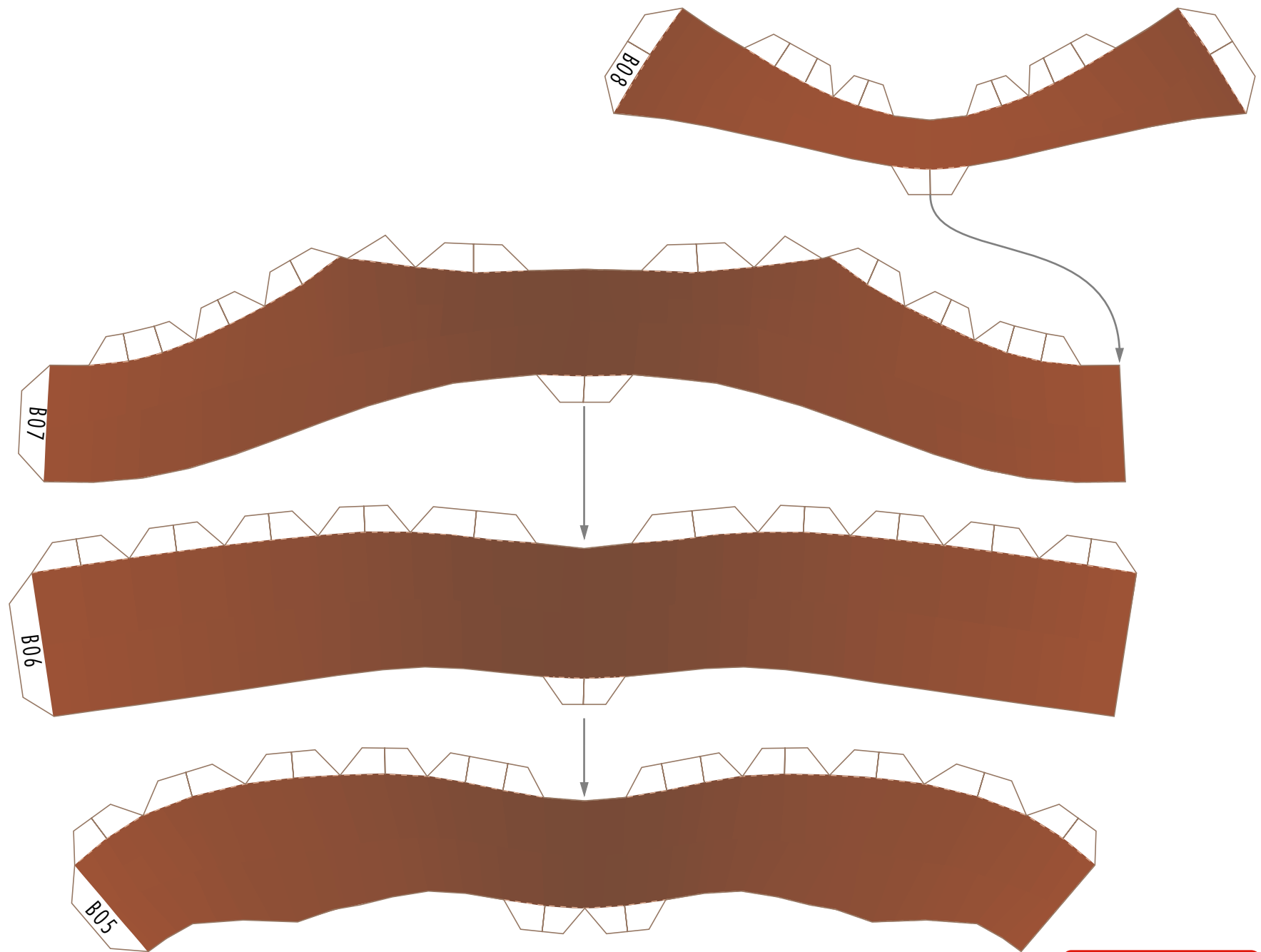
Caution

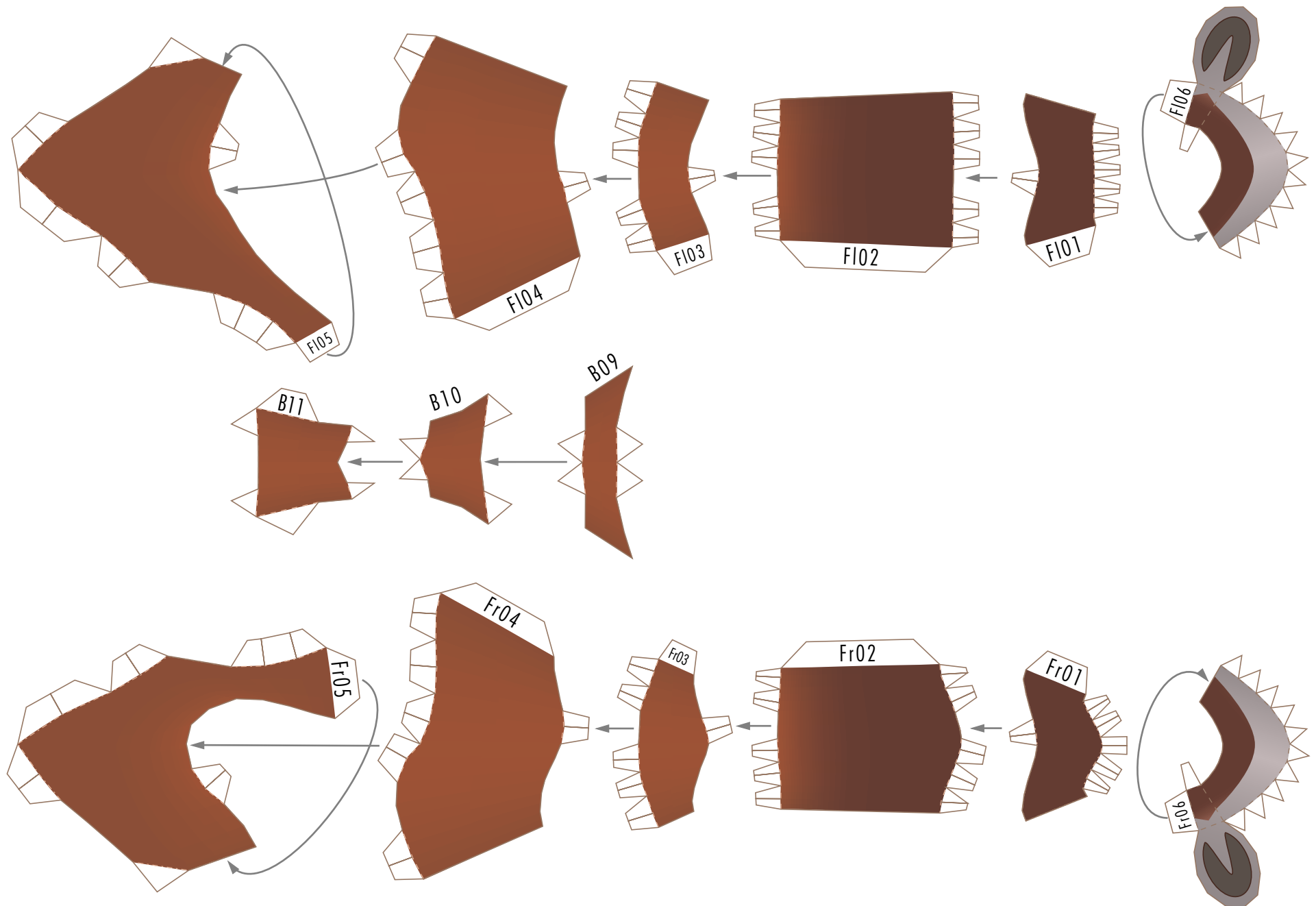


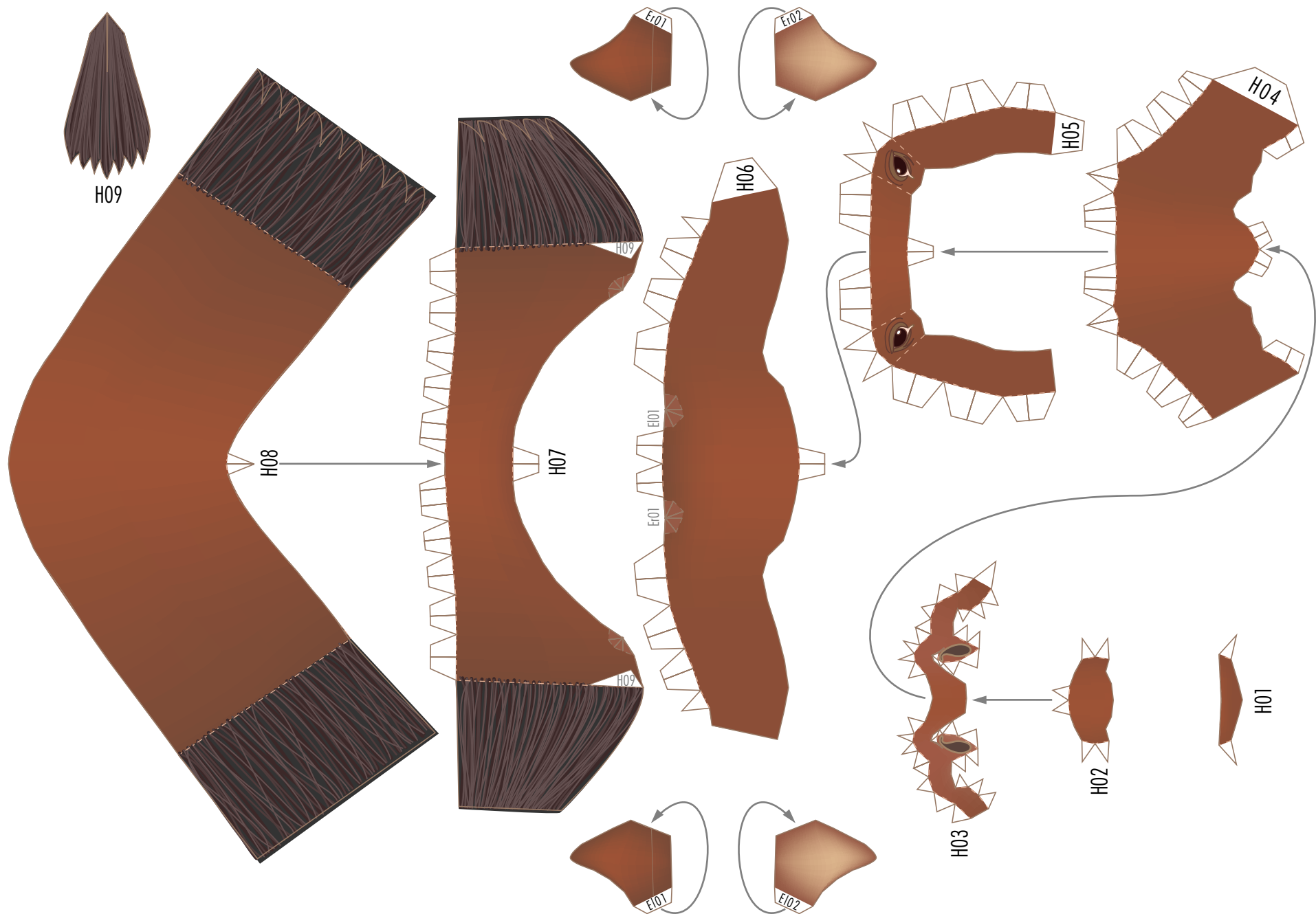
This craft requires the use of glue, scissors, tweezers, and other tools which may be dangerous to young children. Please keep them out of reach of children while you work.

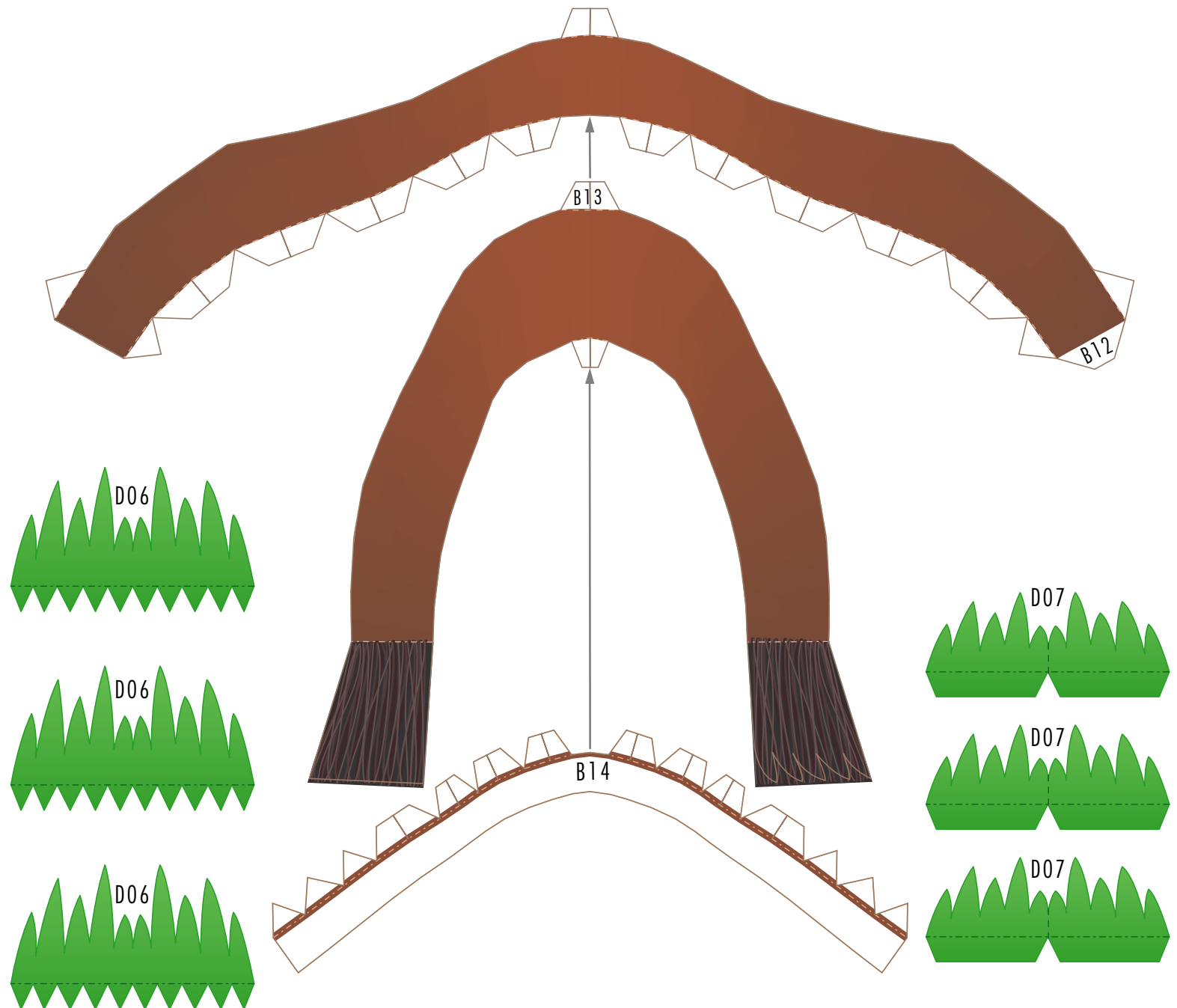


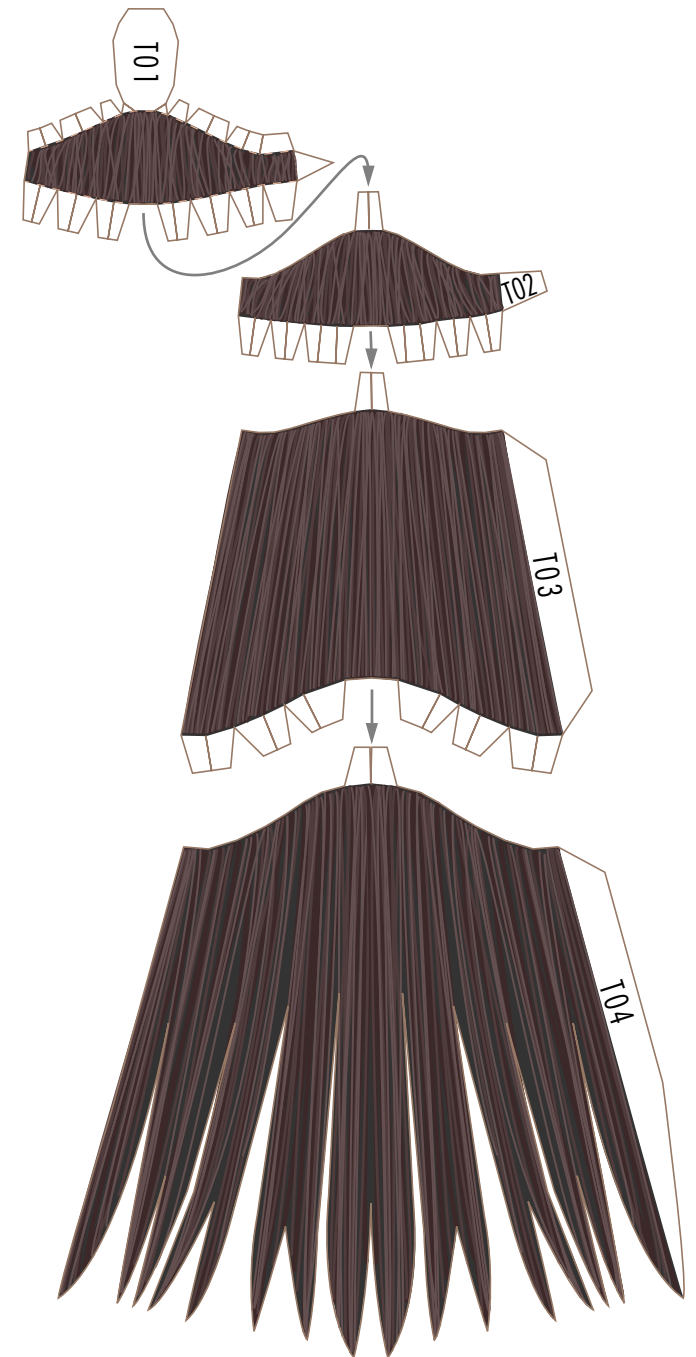
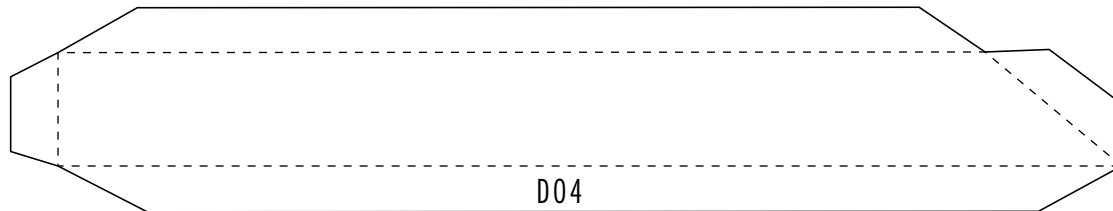
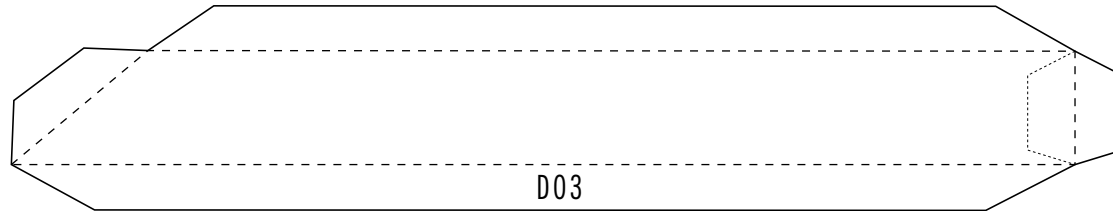
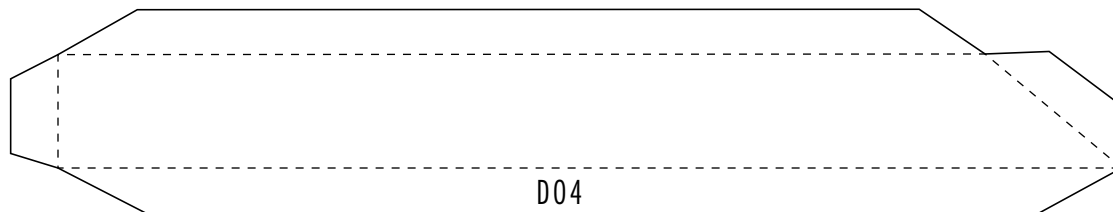
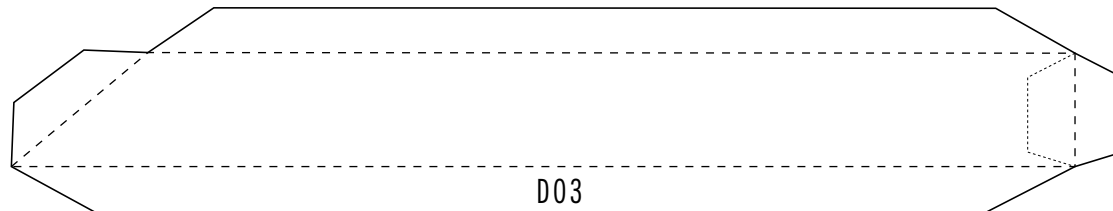
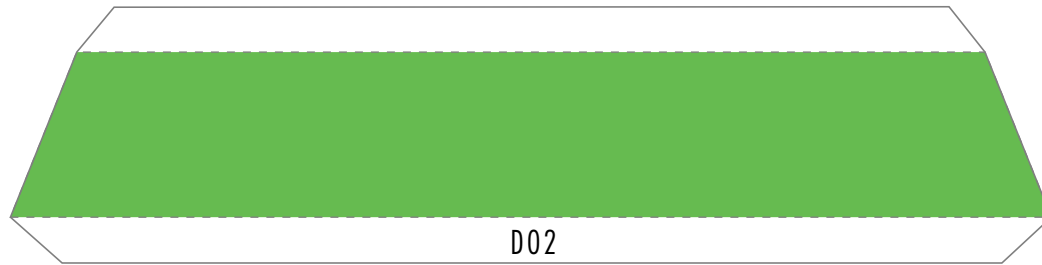


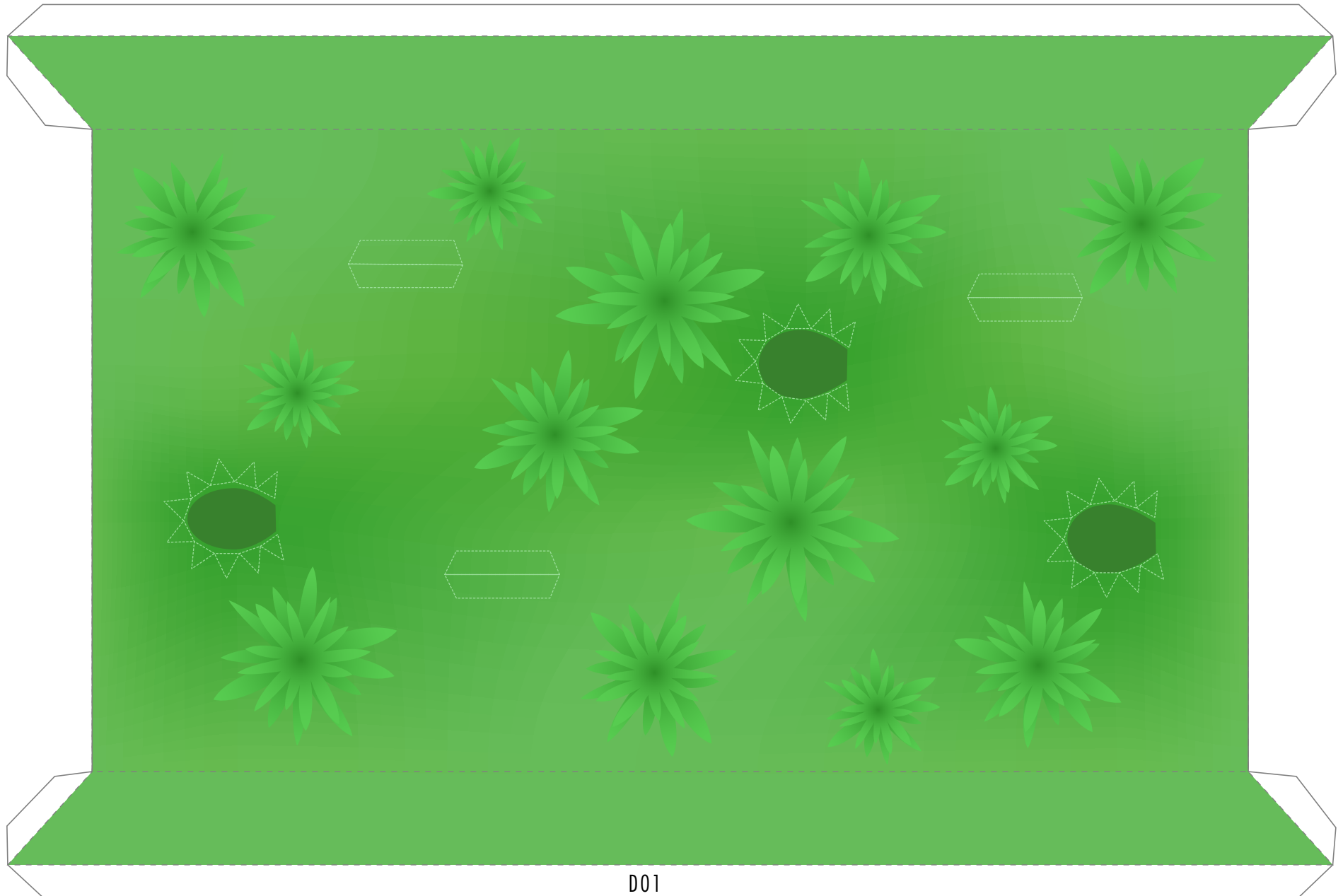












D01

