

Make your own...

The Dark Knight Rises

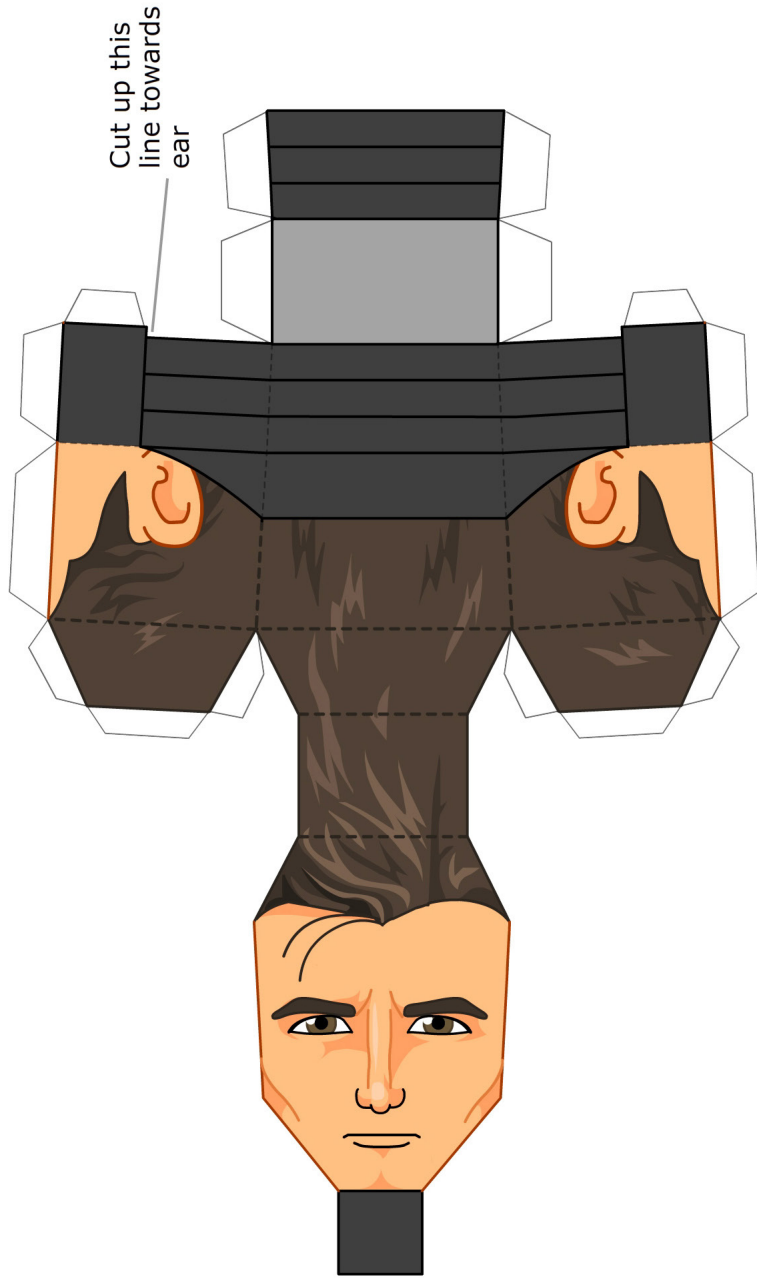
BATMAN



With removeable Mask

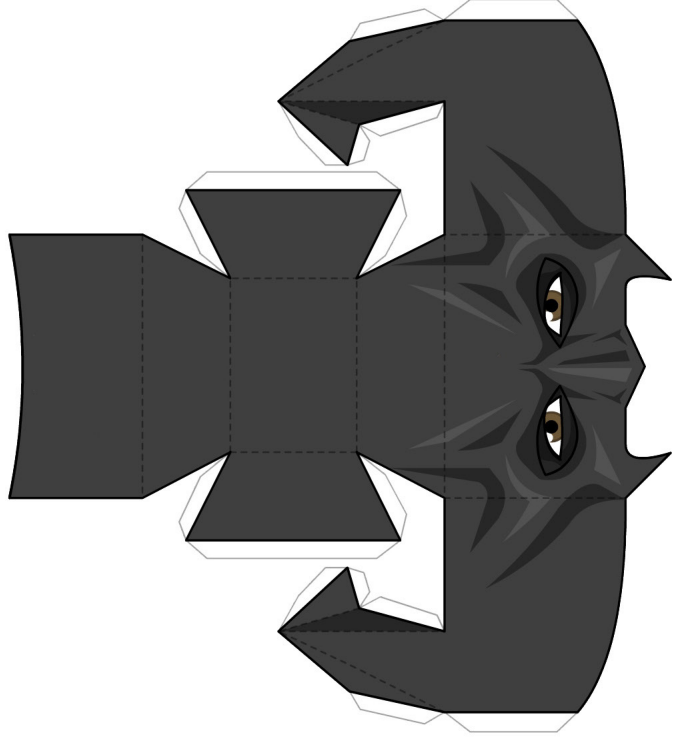
Head.

You've probably made a lof of these by now, if not I'd recommend starting by folding the base of the head / neck in place and then building the rest of the head up, with the face sticking down last.



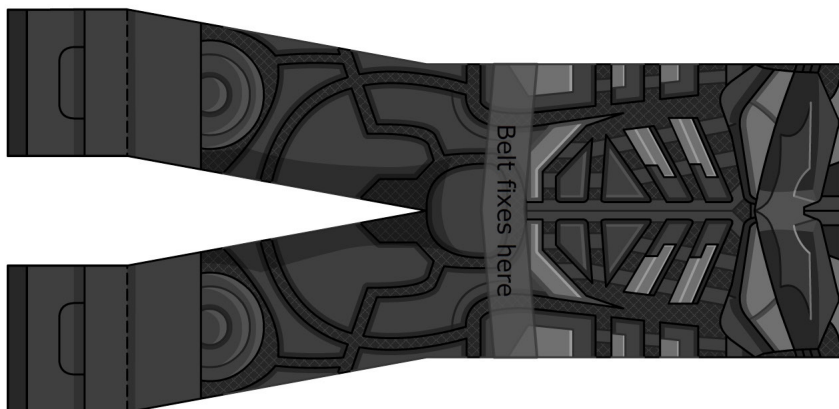
Mask.

The ears are a little tricky, they fold around in to pyramid shapes. Then, once you have assembled the rest of the mask they should fix to the sides of the mask in to place. The mask should then fit snugly on to Bruce's head.

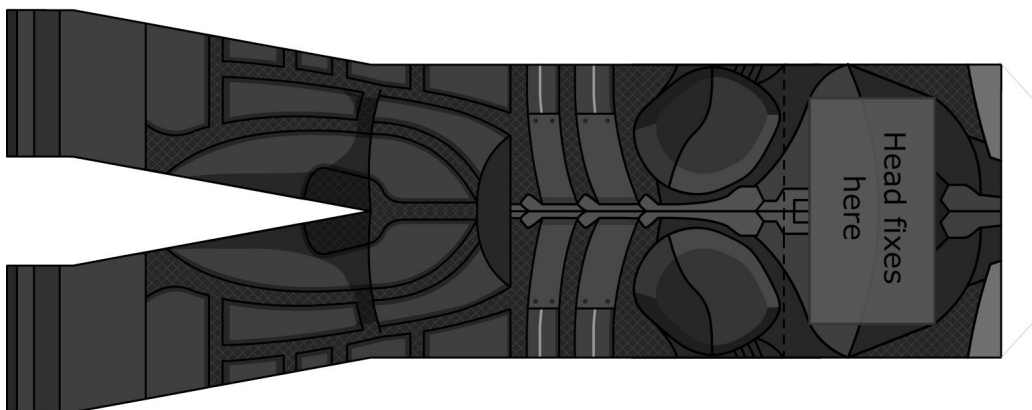


Front of body.

Once body and belt have been built, belt fixes to front of body and then wraps around the outside.



Back of body.

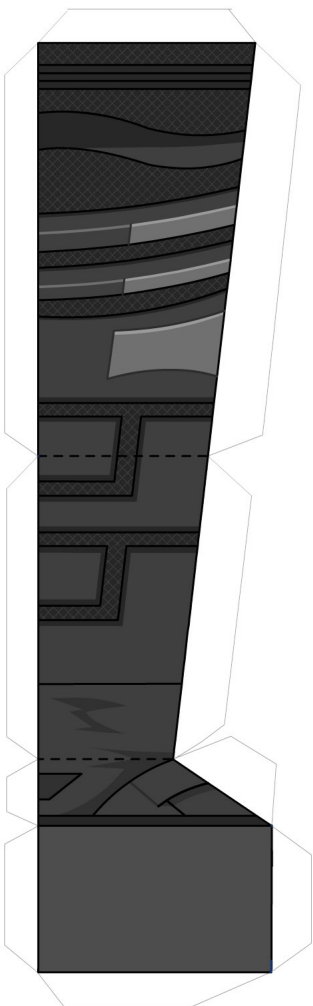


Belt.

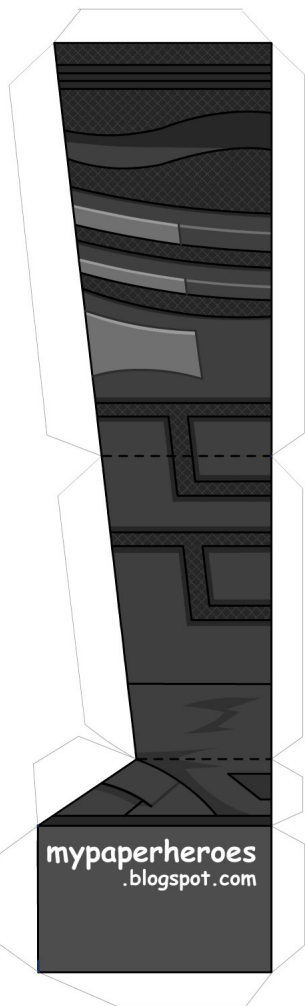
Fold the tabs backwards to make a 3D belt before fixing to body. Once attached, ass the buckle and then the other accessories to the belt.



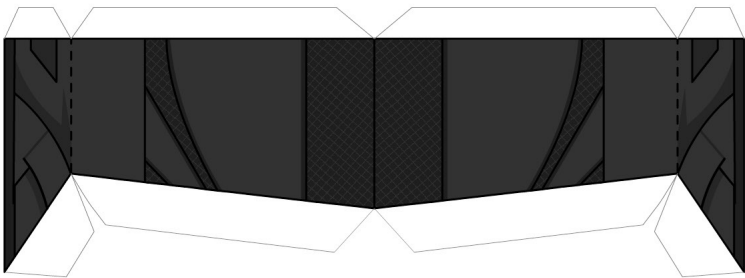
Right Side of body.



Left Side of body.

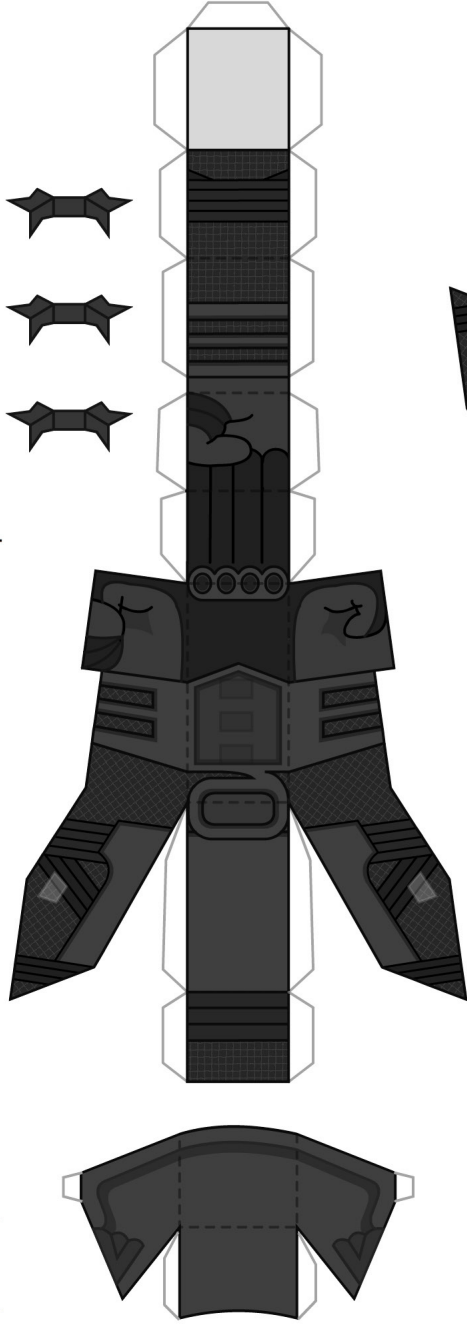


Inside of Legs



Right Arm.

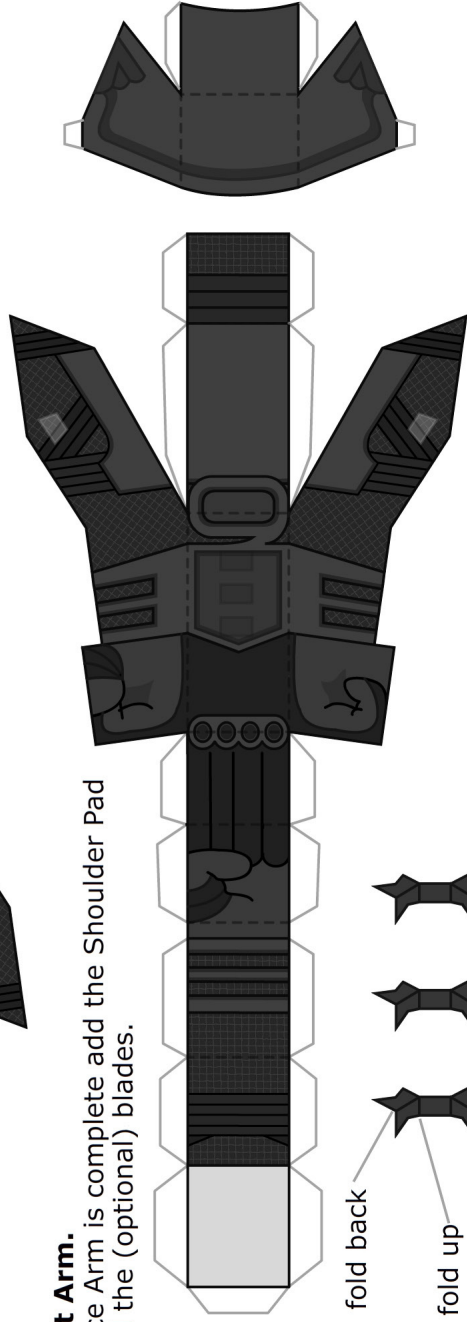
Once Arm is complete add the Shoulder Pad and the (optional) blades.



Ends of blade parts fold back, to make double sided blade. Then blade on each side folds upwards. Then fix the centre to the arm

Left Arm.

Once Arm is complete add the Shoulder Pad and the (optional) blades.



fold back

fold up

Cape.

Fold the sides of the cape back first to make the inside of the cape, then affix the top tabs to the top of the body by the head to add his cape.

