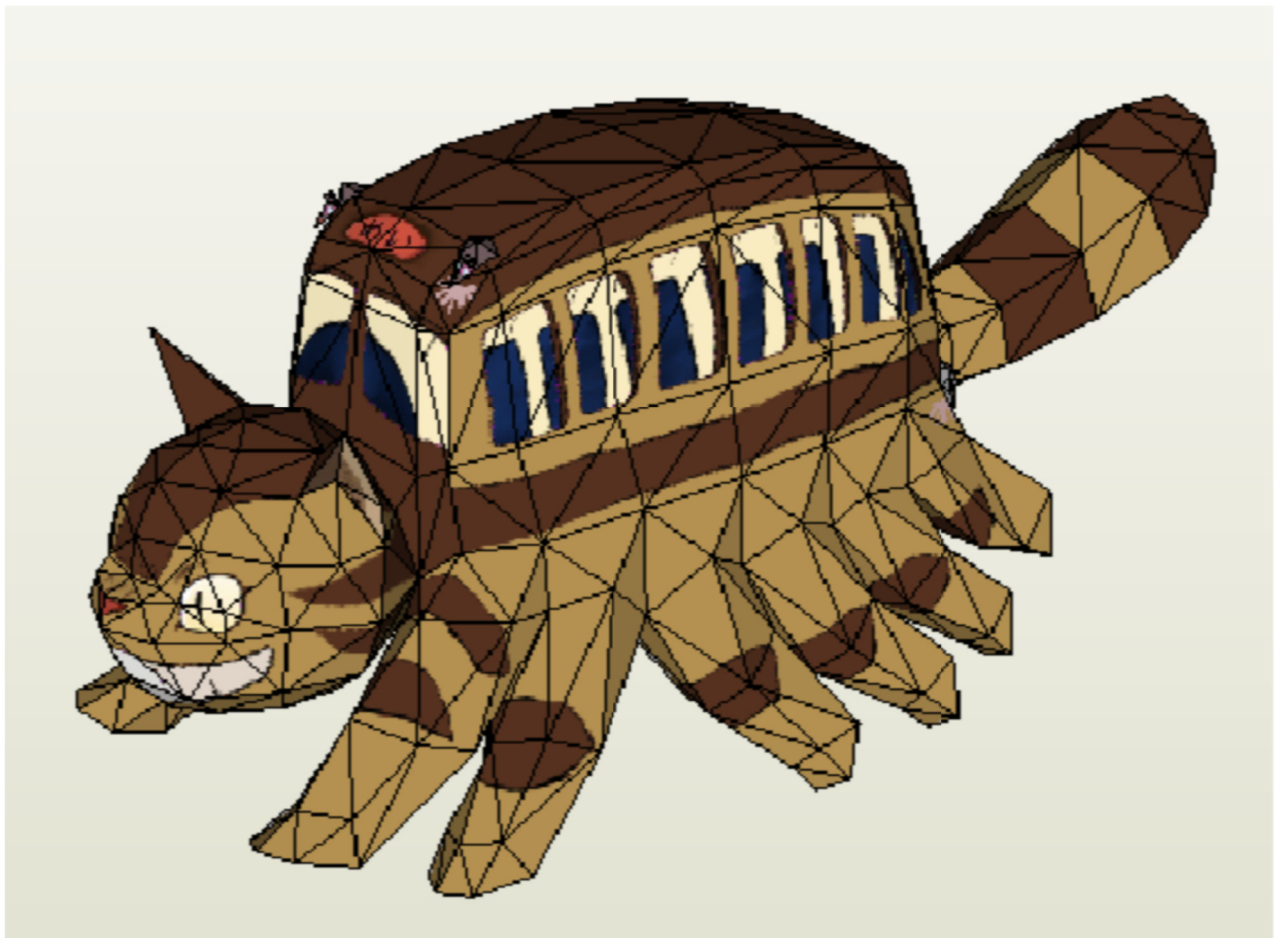


My NEIGHBOR TOTORO

CATBUS

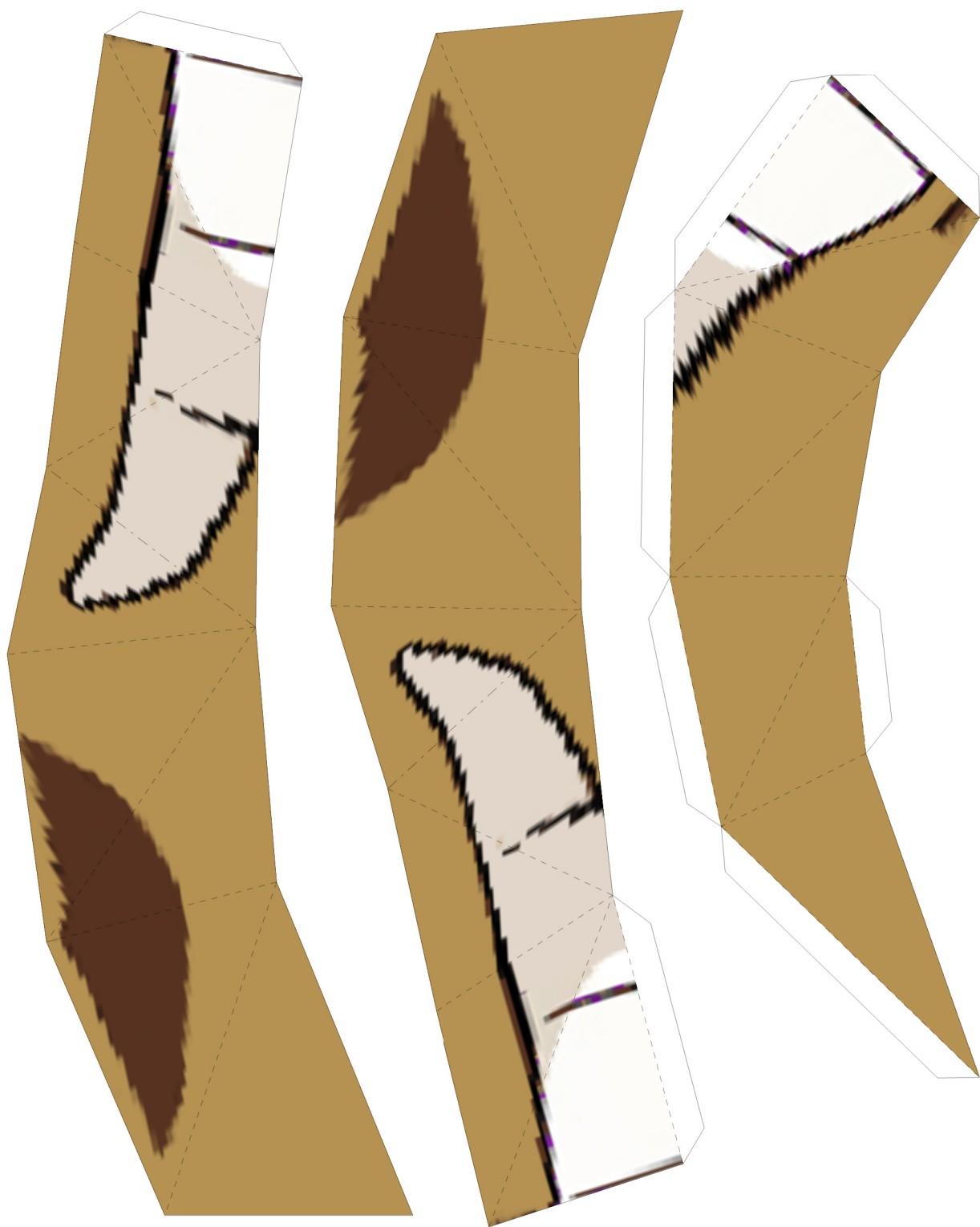


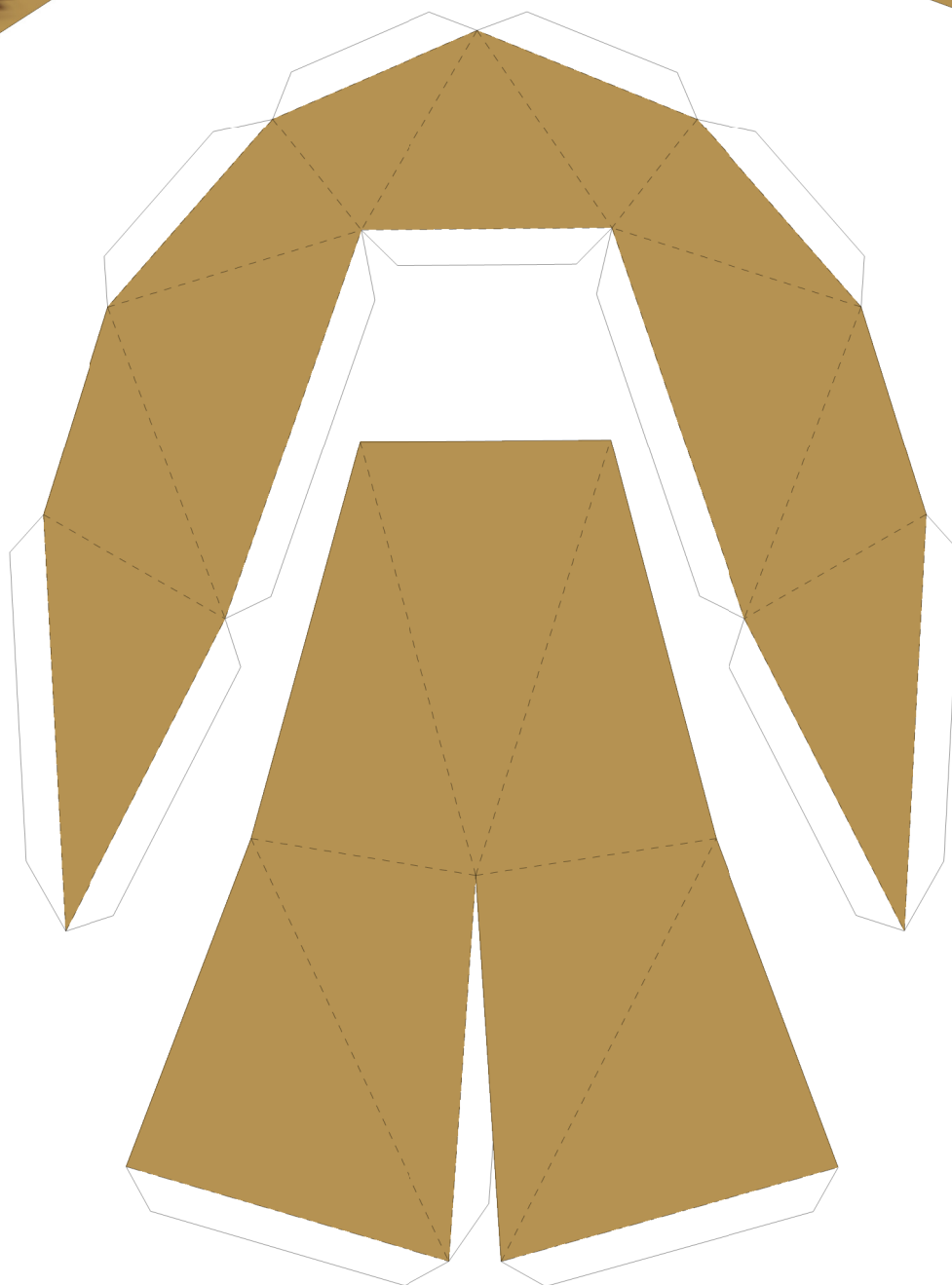
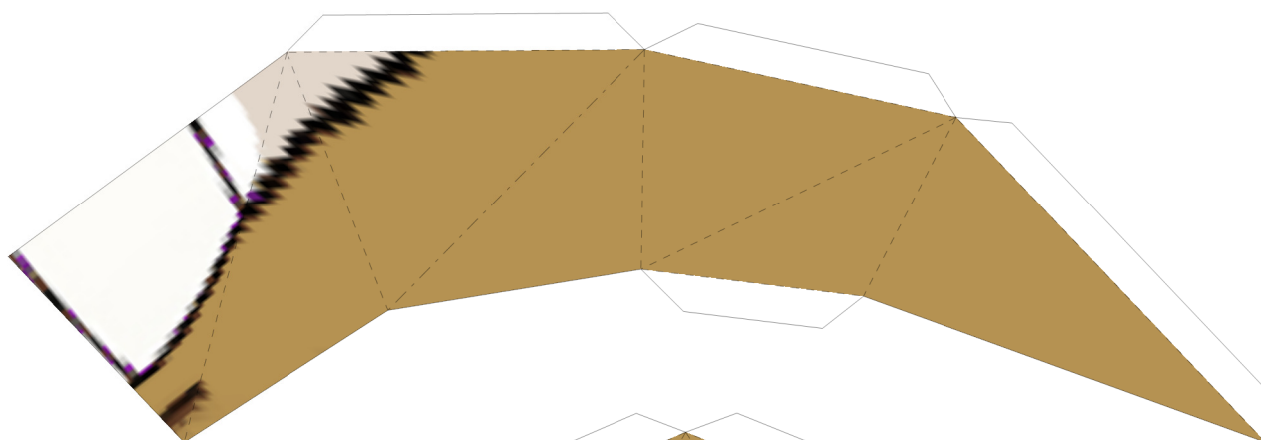
By PODRAGON

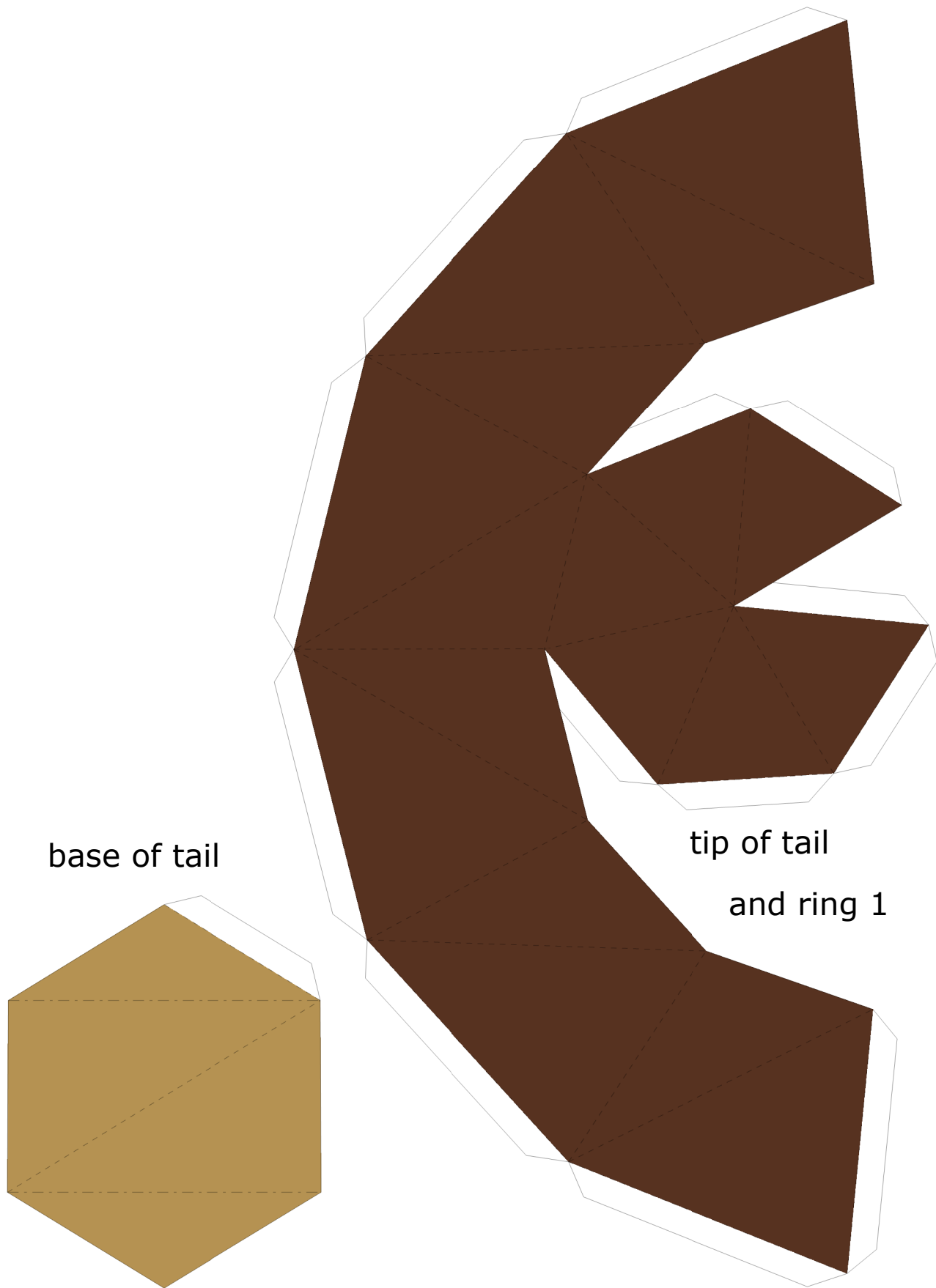
[HTTP://JYXXIE.DEVIANTART.COM/](http://jyxxie.deviantart.com/)







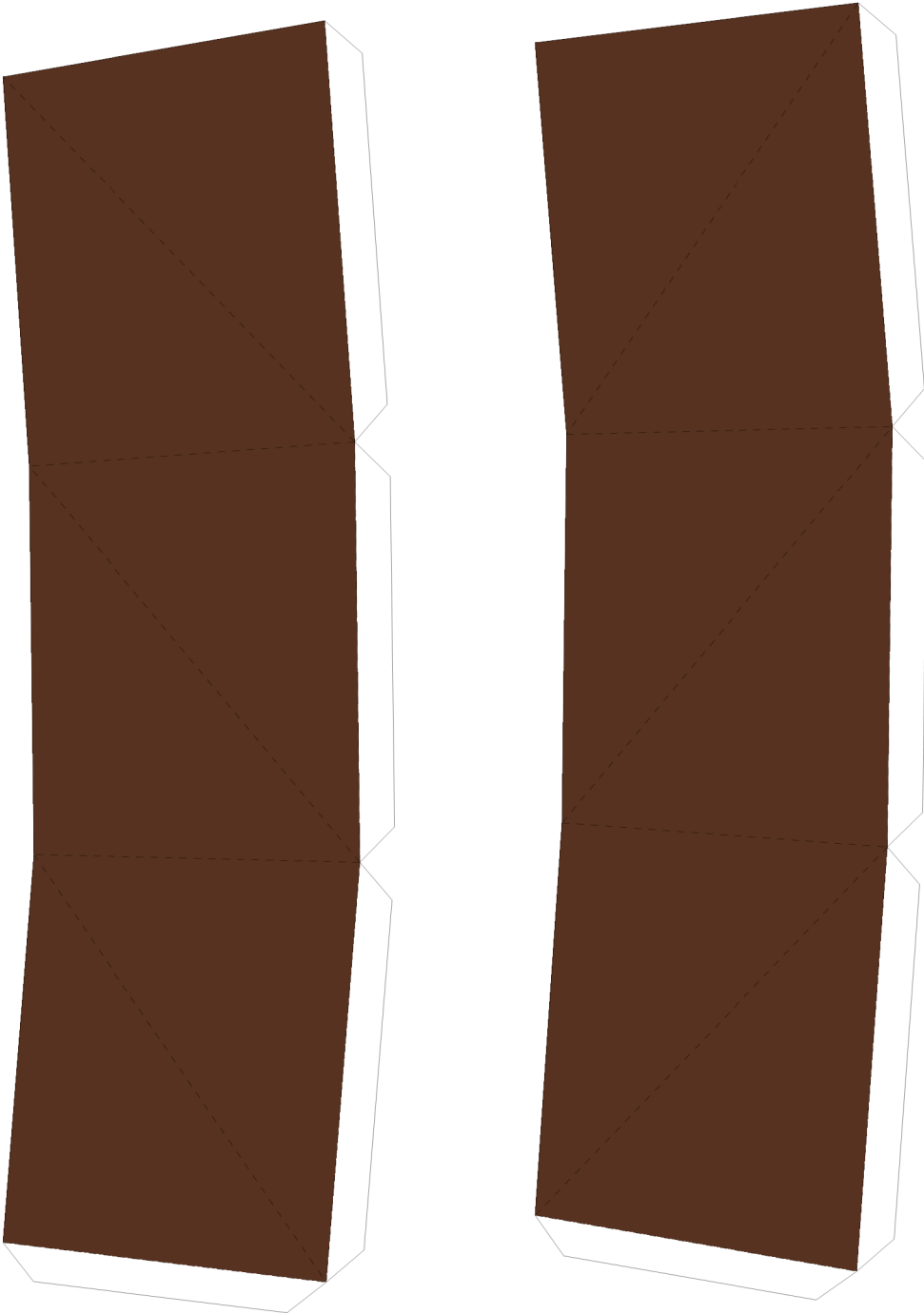




base of tail

tip of tail
and ring 1

tail ring 2



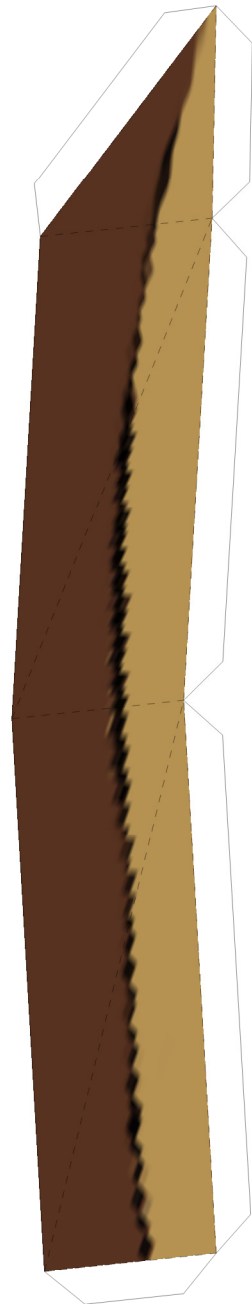
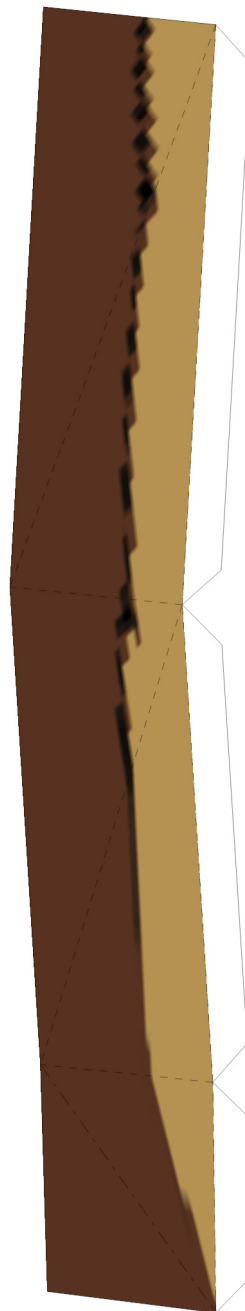
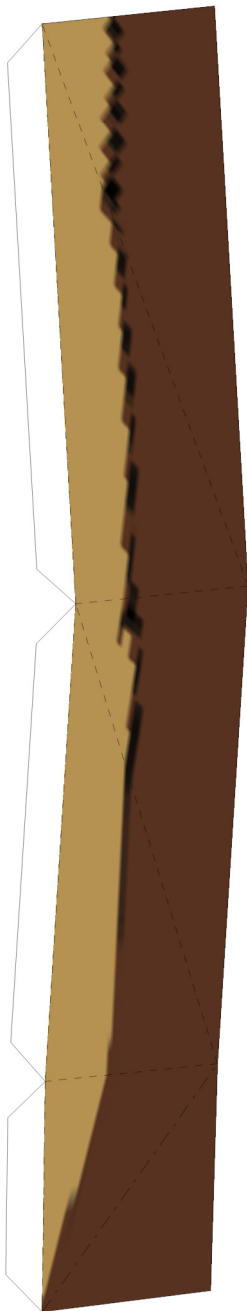
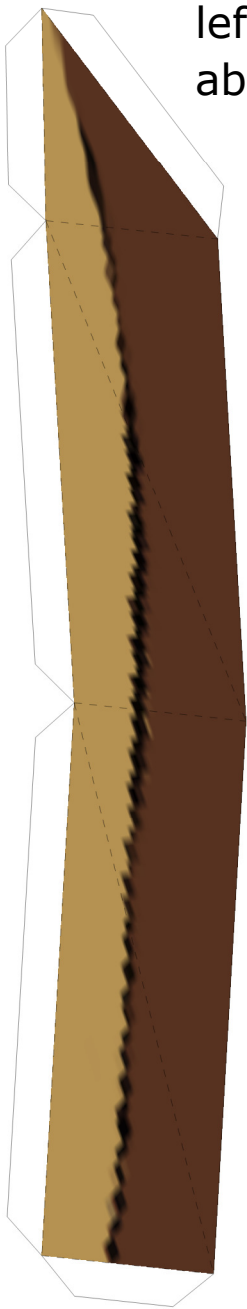
Be careful with these pieces. They're arranged to save space, so each page has a left and right side.





left side
above window

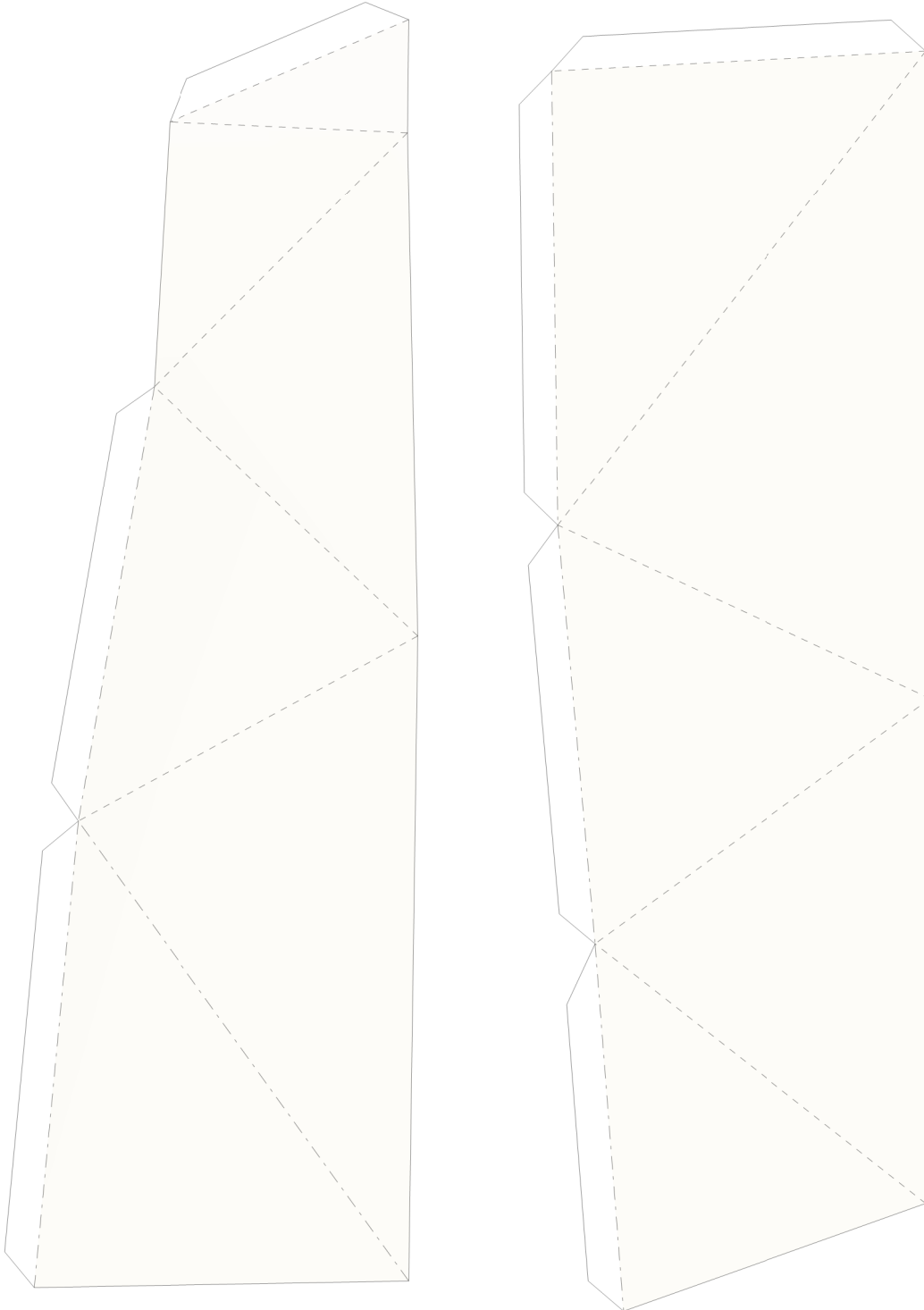
right side
above window



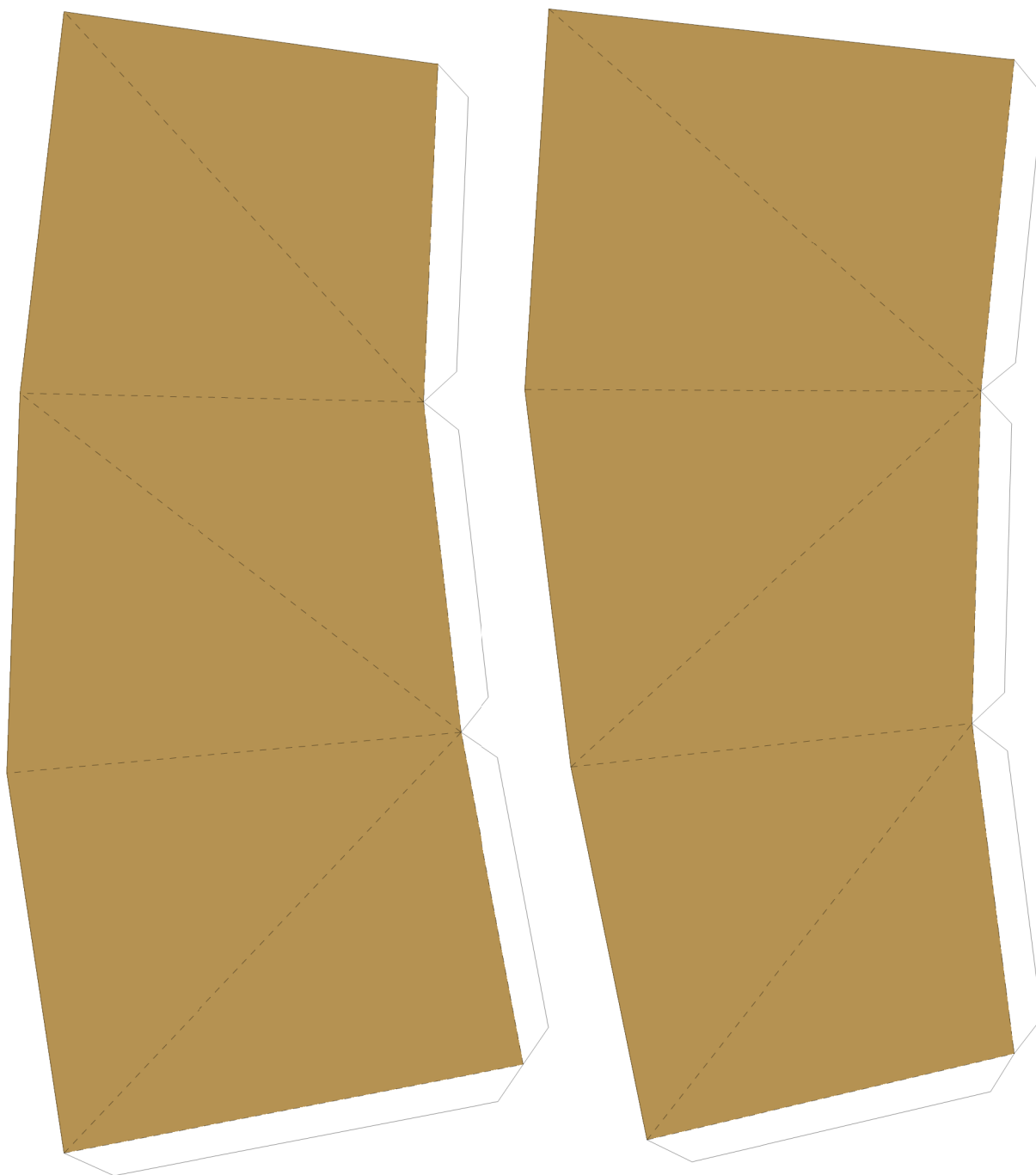
Suggested build:

Build head, legs, tail and 'bus' separately, connect all together as you add belly, end at rear. Attach tail.

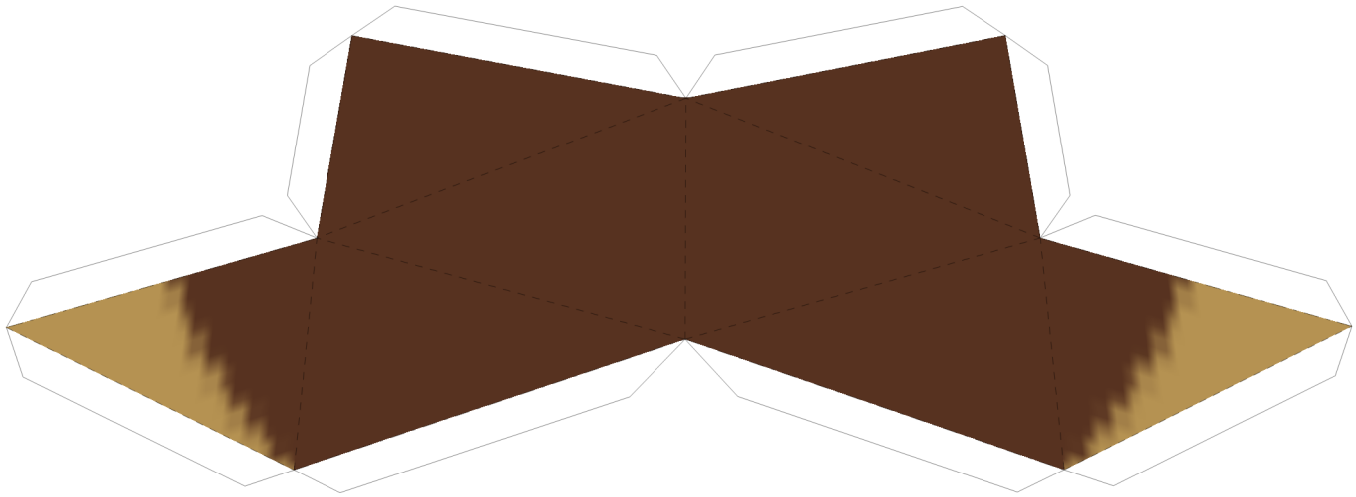
Build and add mice/rats last.



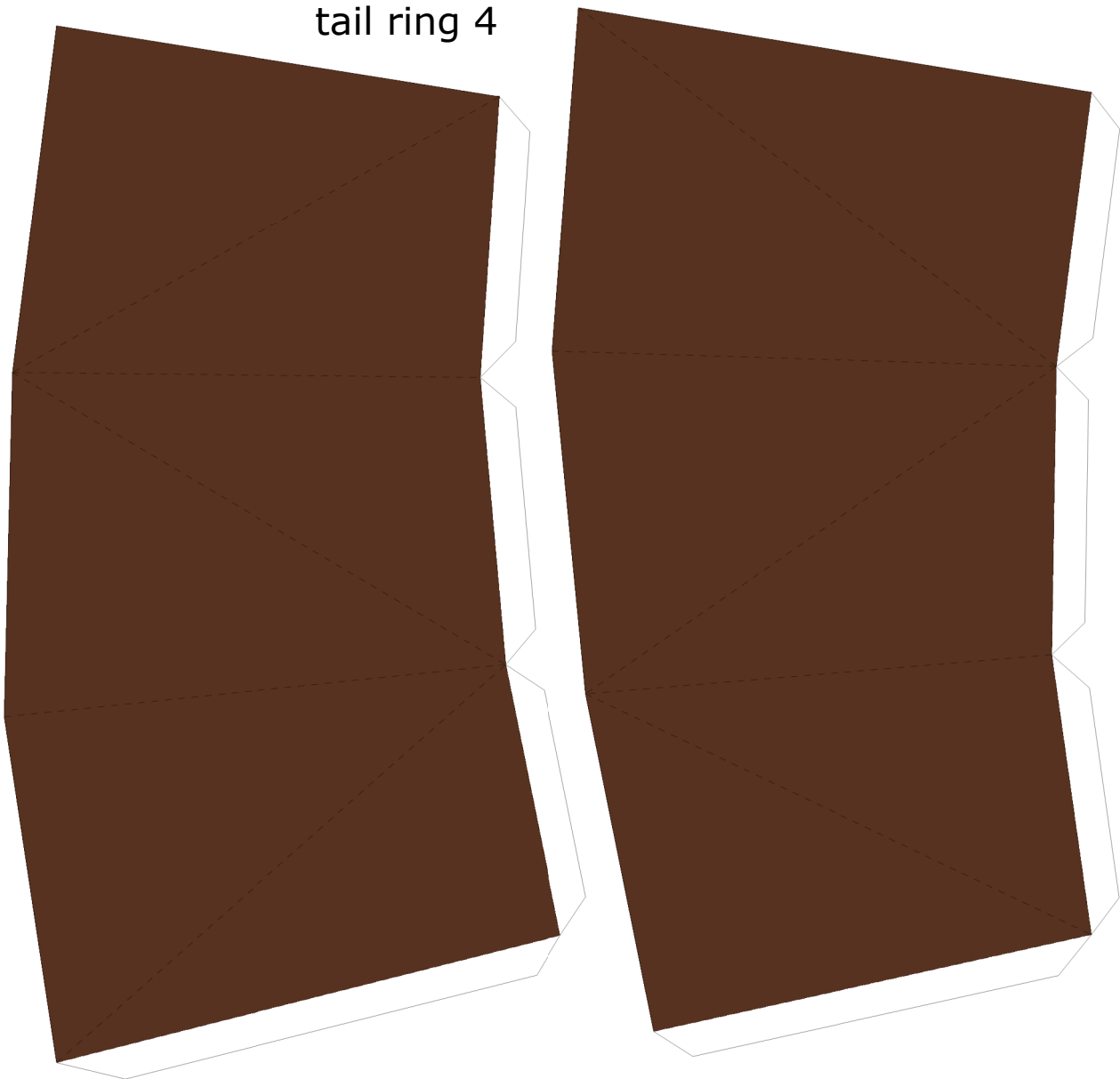
tail ring 3



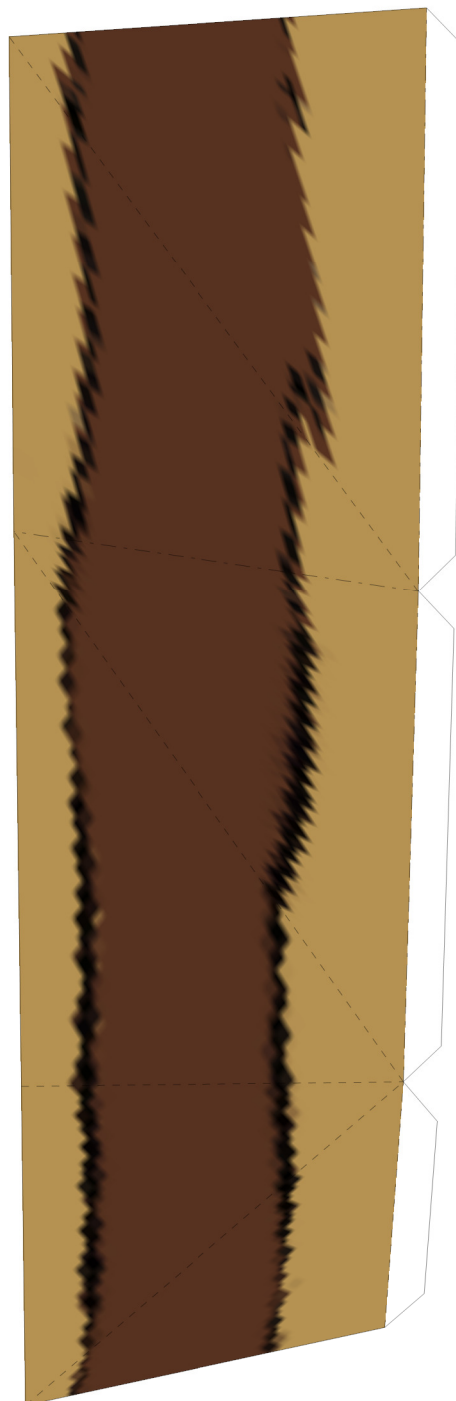
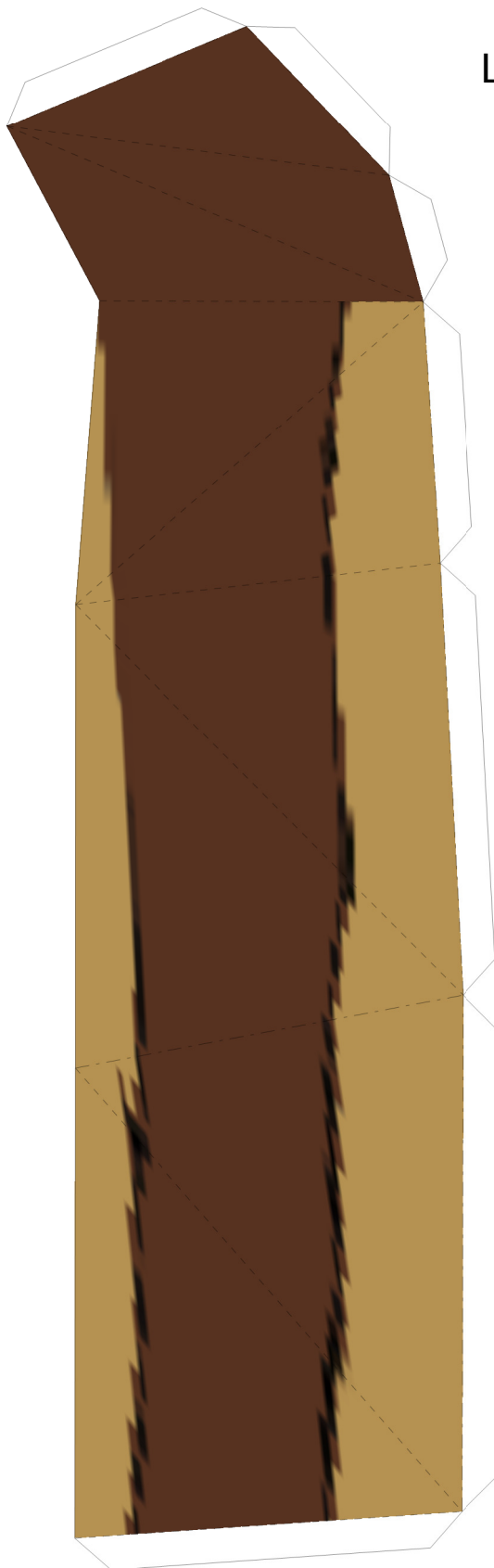
back of head



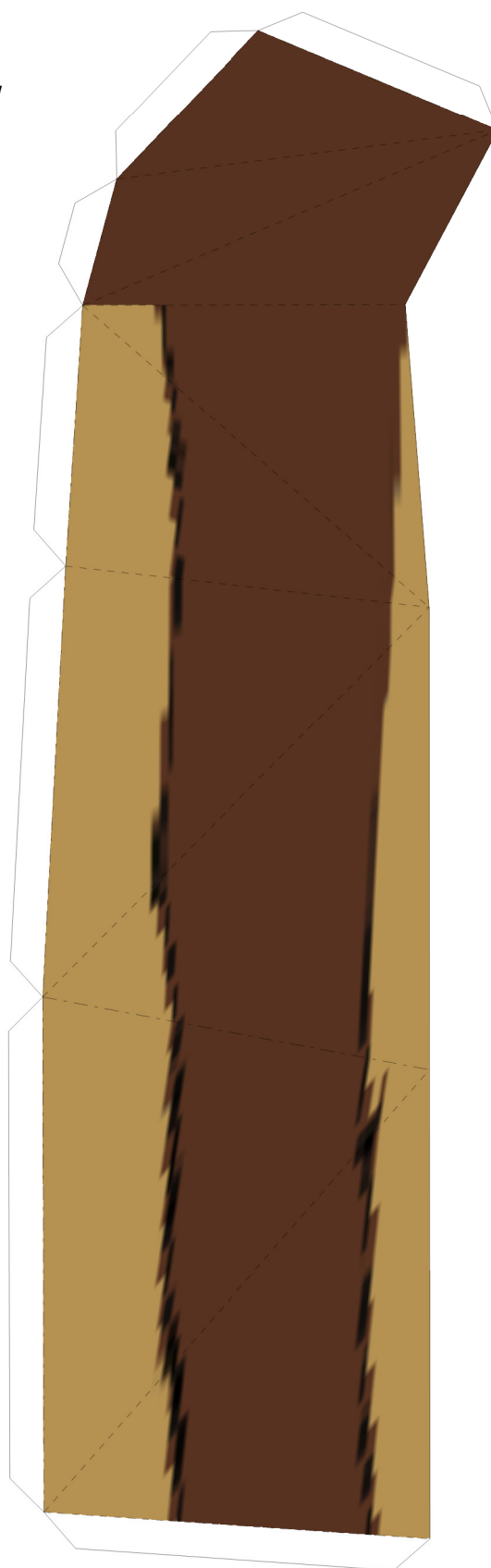
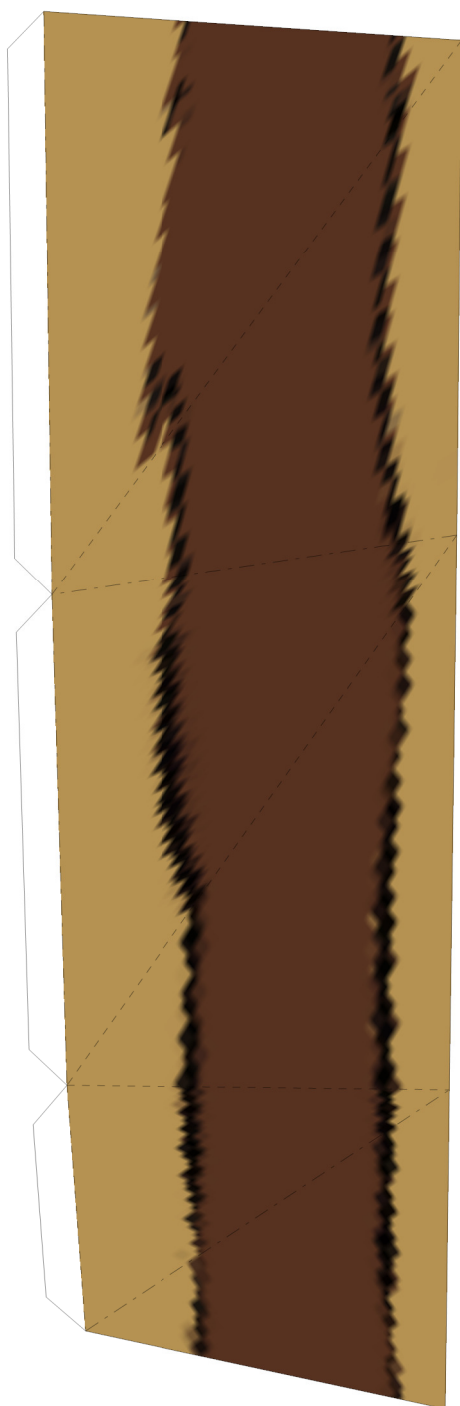
tail ring 4

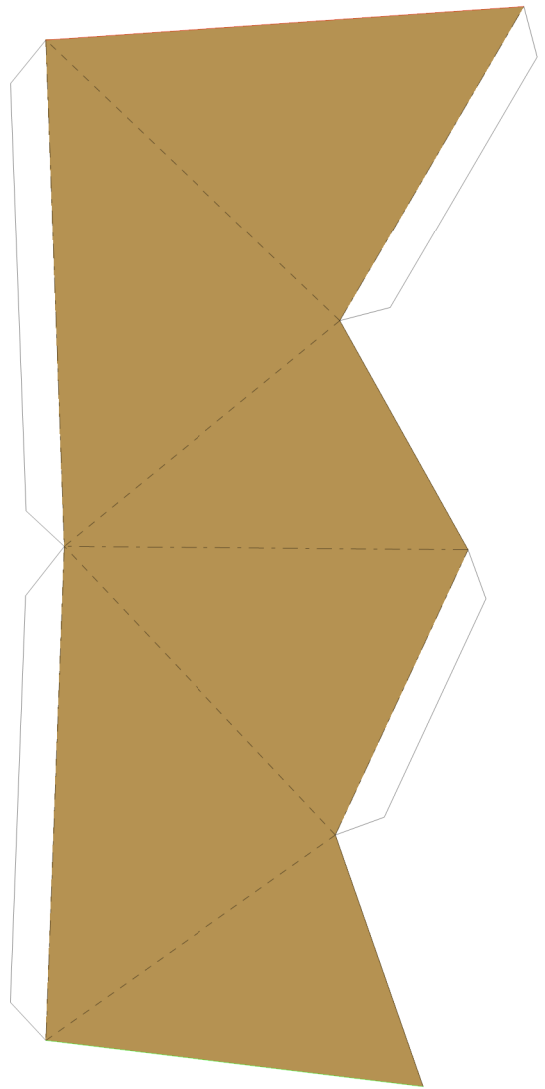
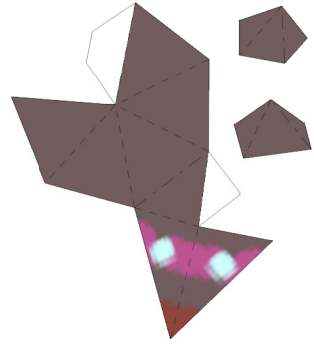
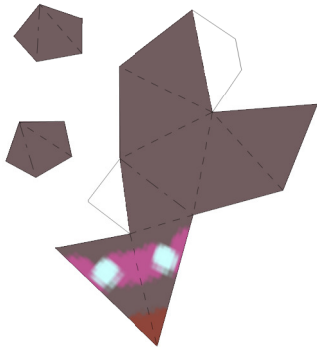
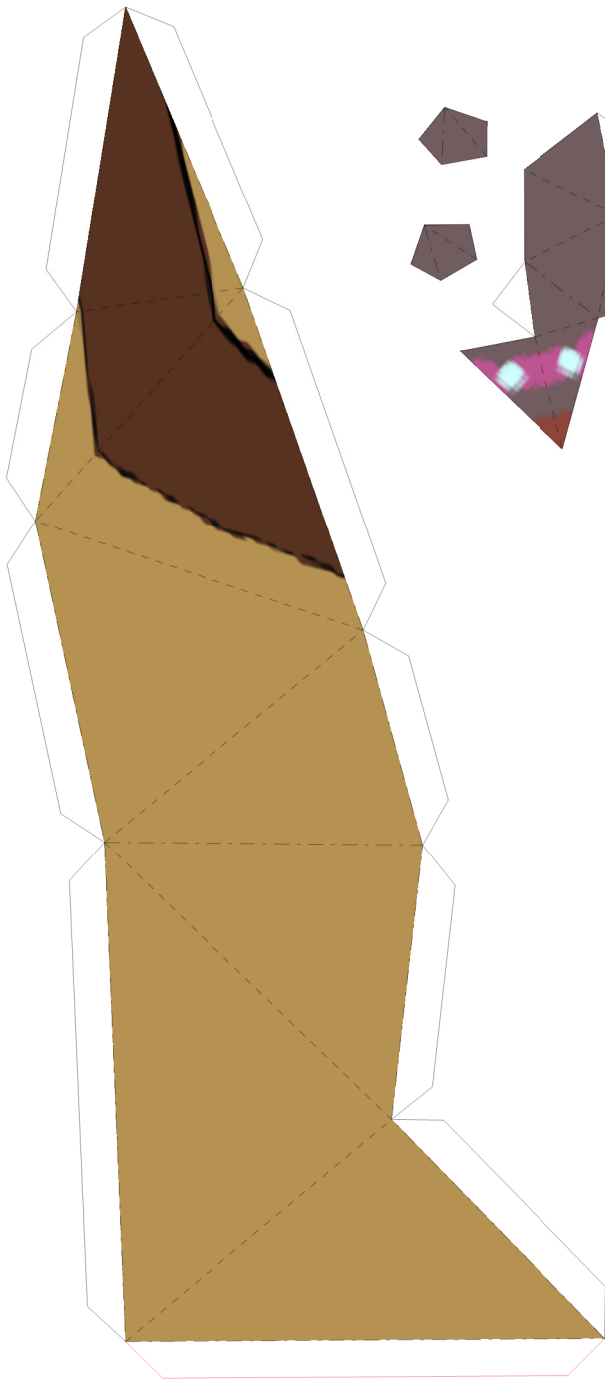


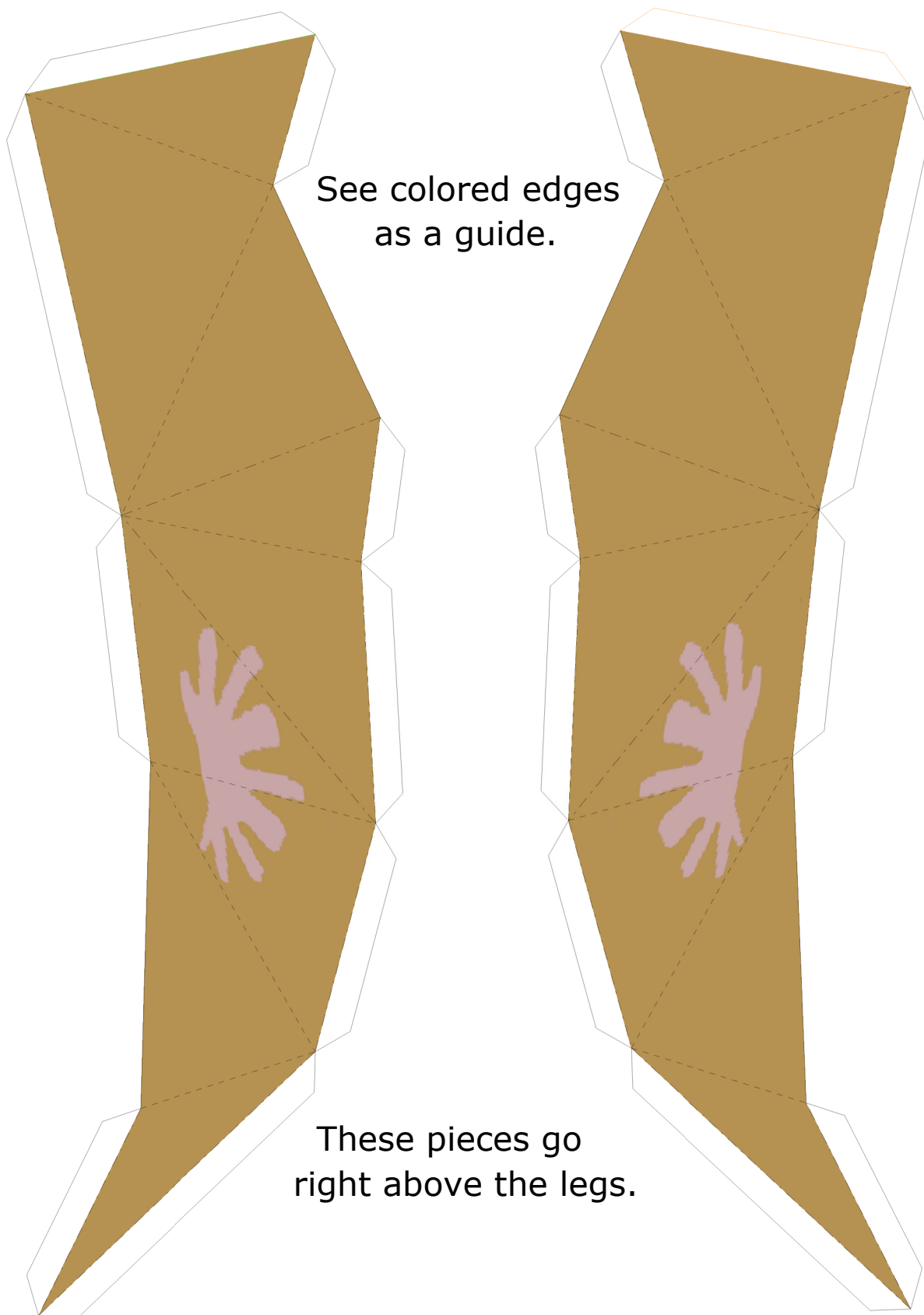
Left side under window



Right side under window

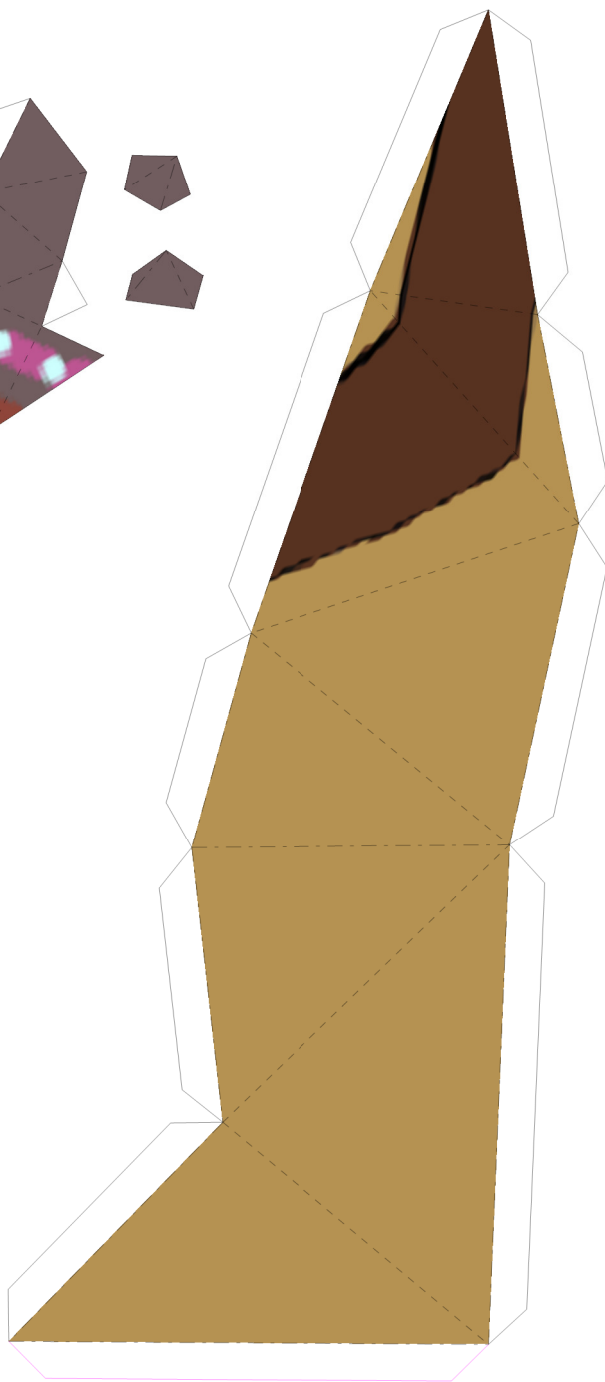
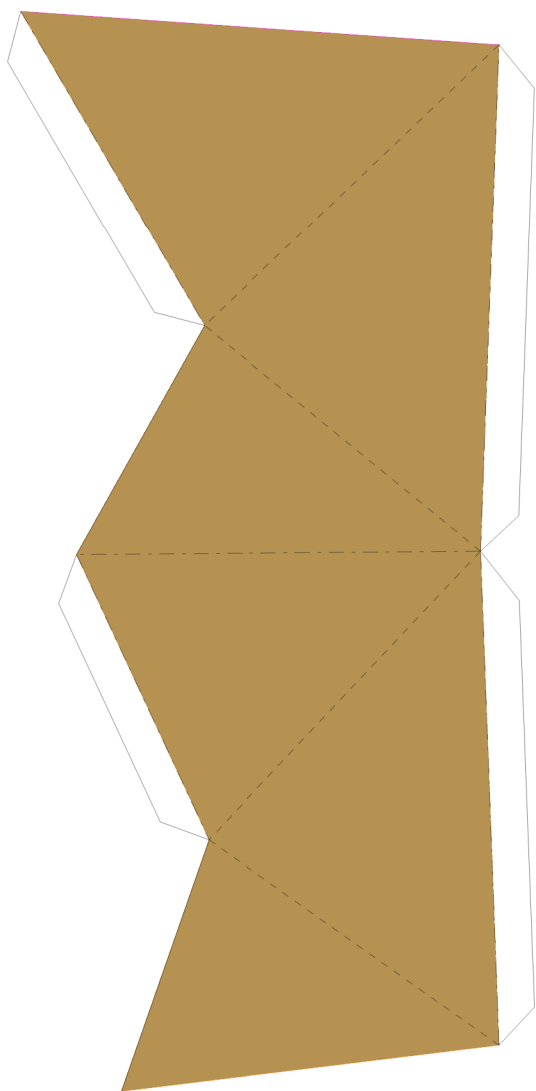
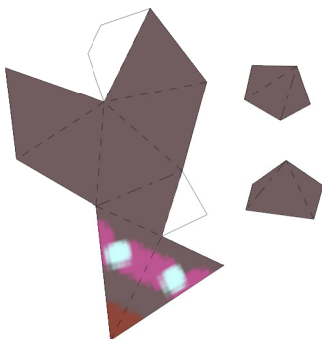
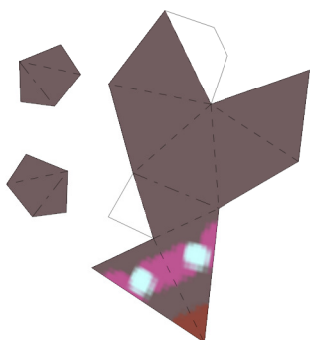


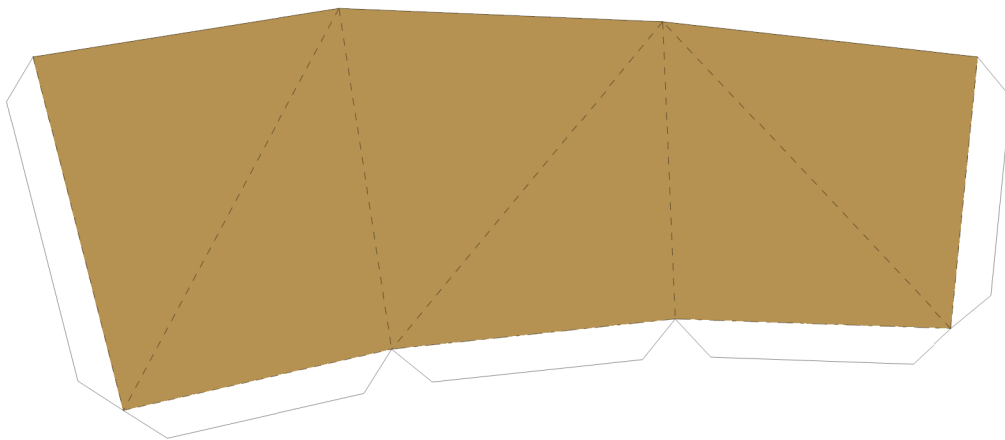




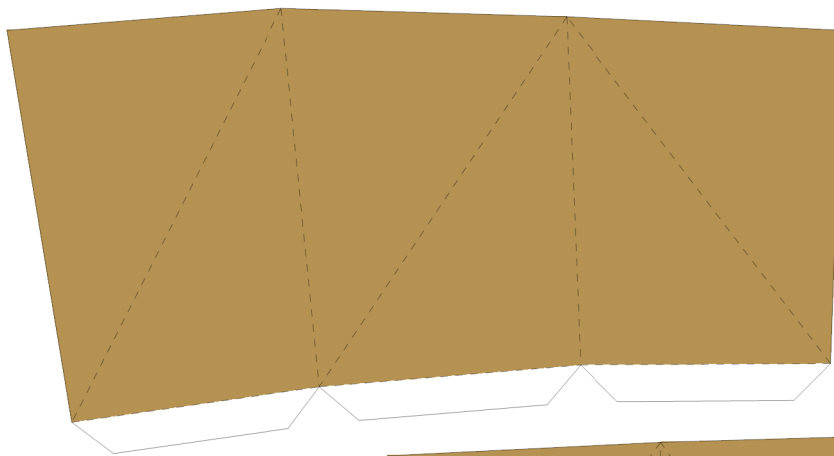
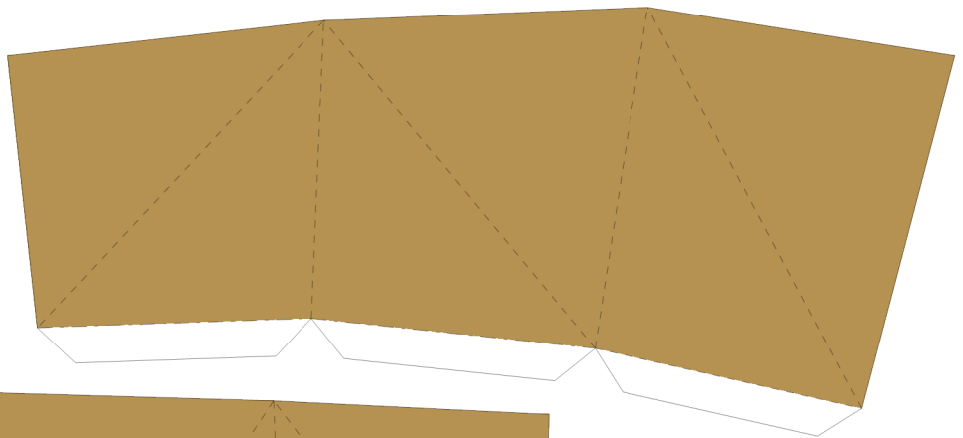
See colored edges
as a guide.

These pieces go
right above the legs.

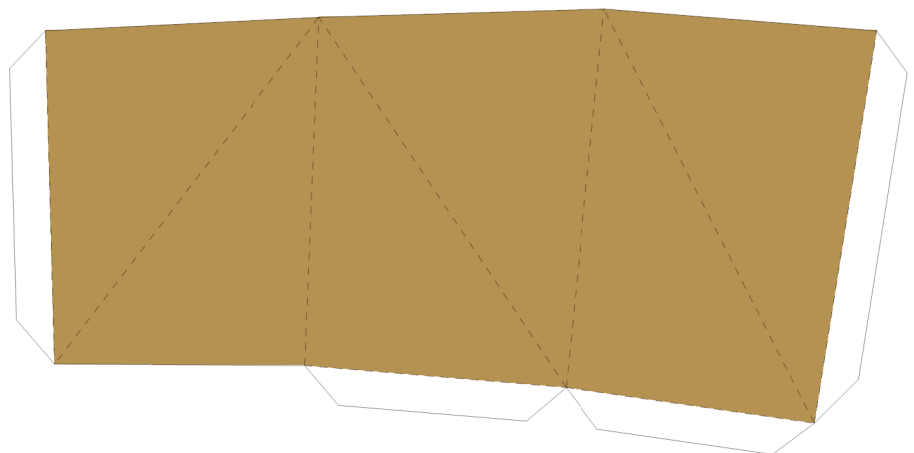




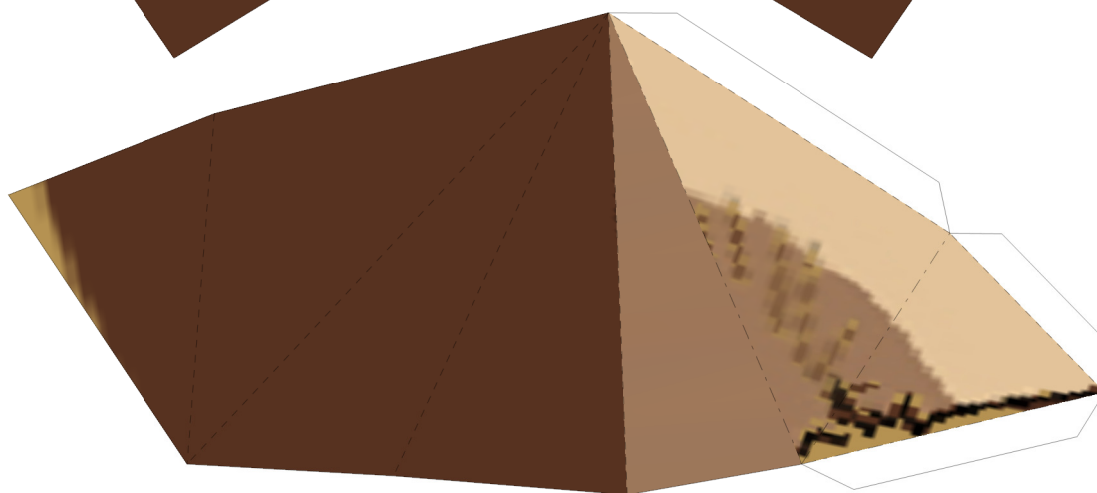
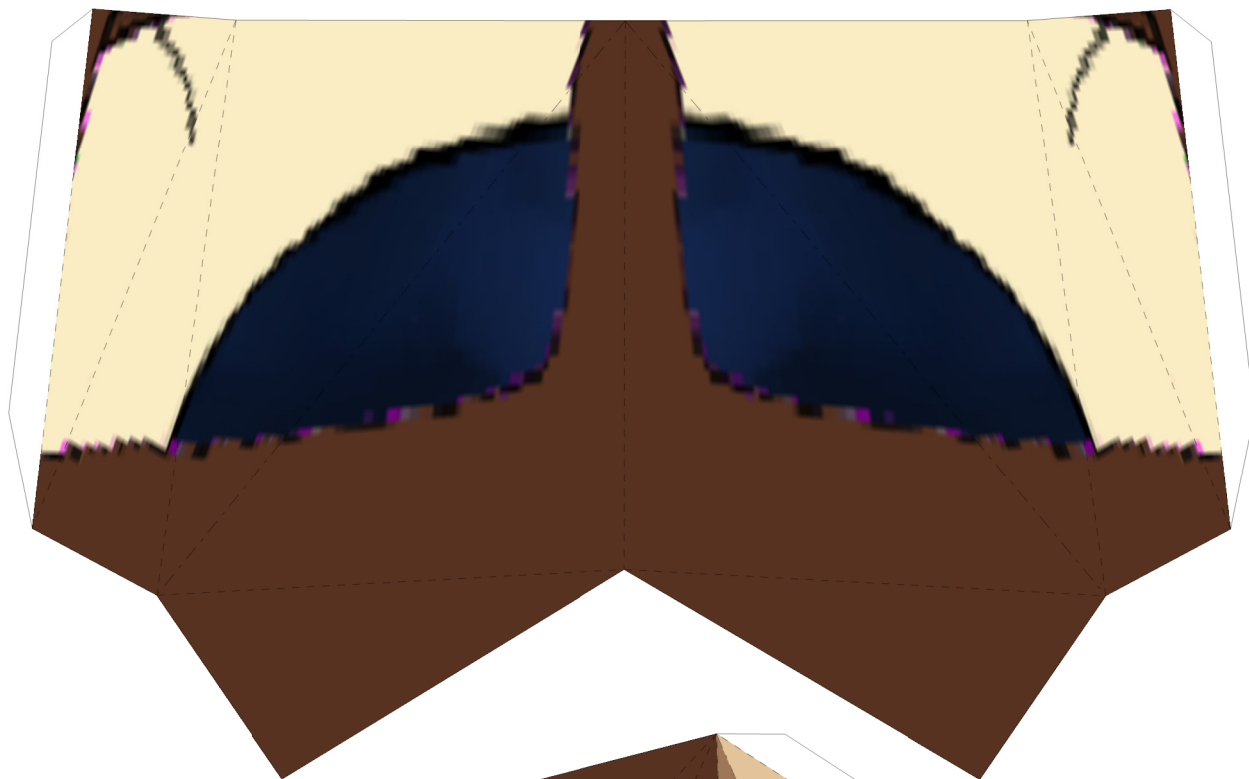
tail ring 5



and 6

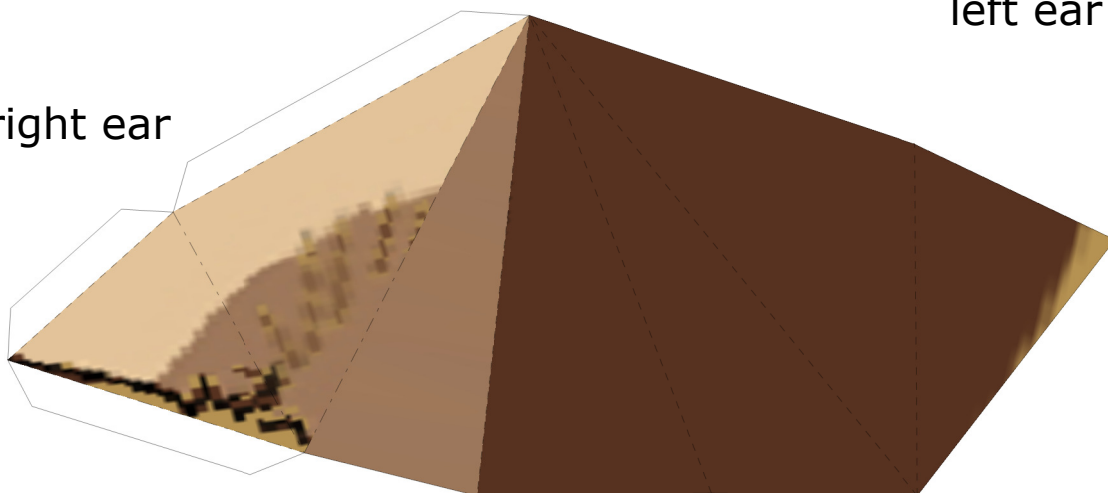


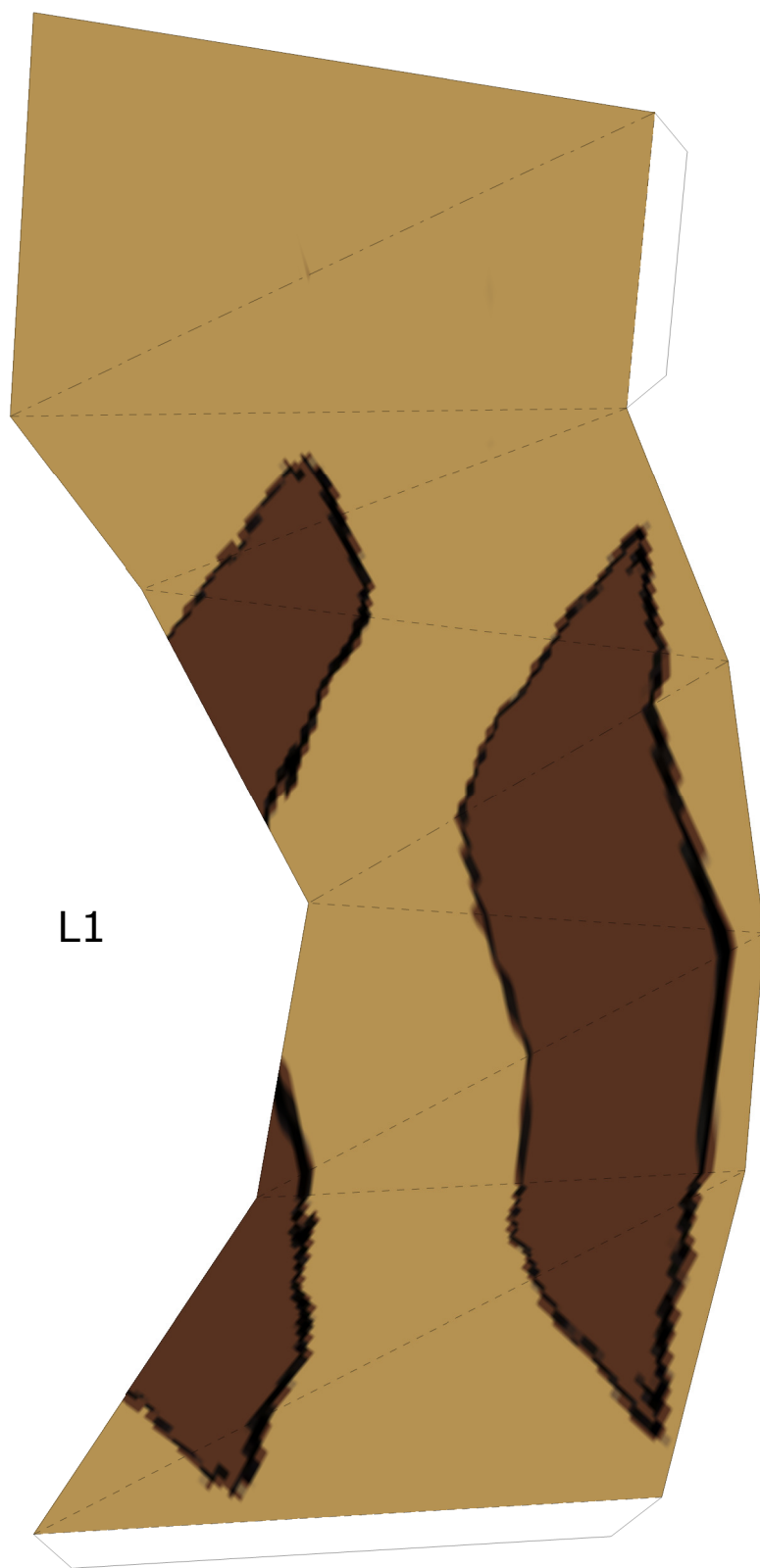
front window



left ear

right ear



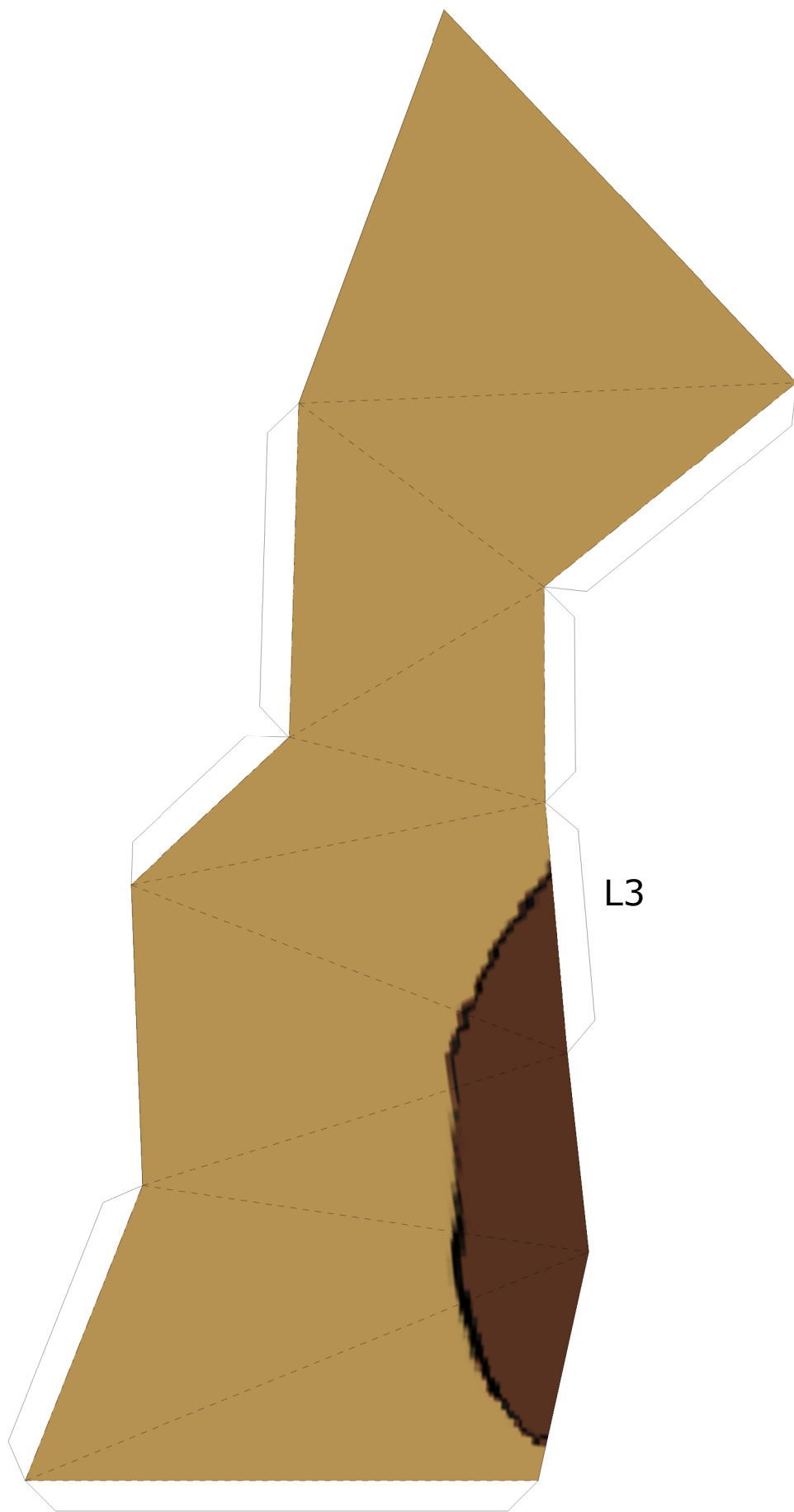




Be careful to not mix up the legs, as there are 12 and most look alike.

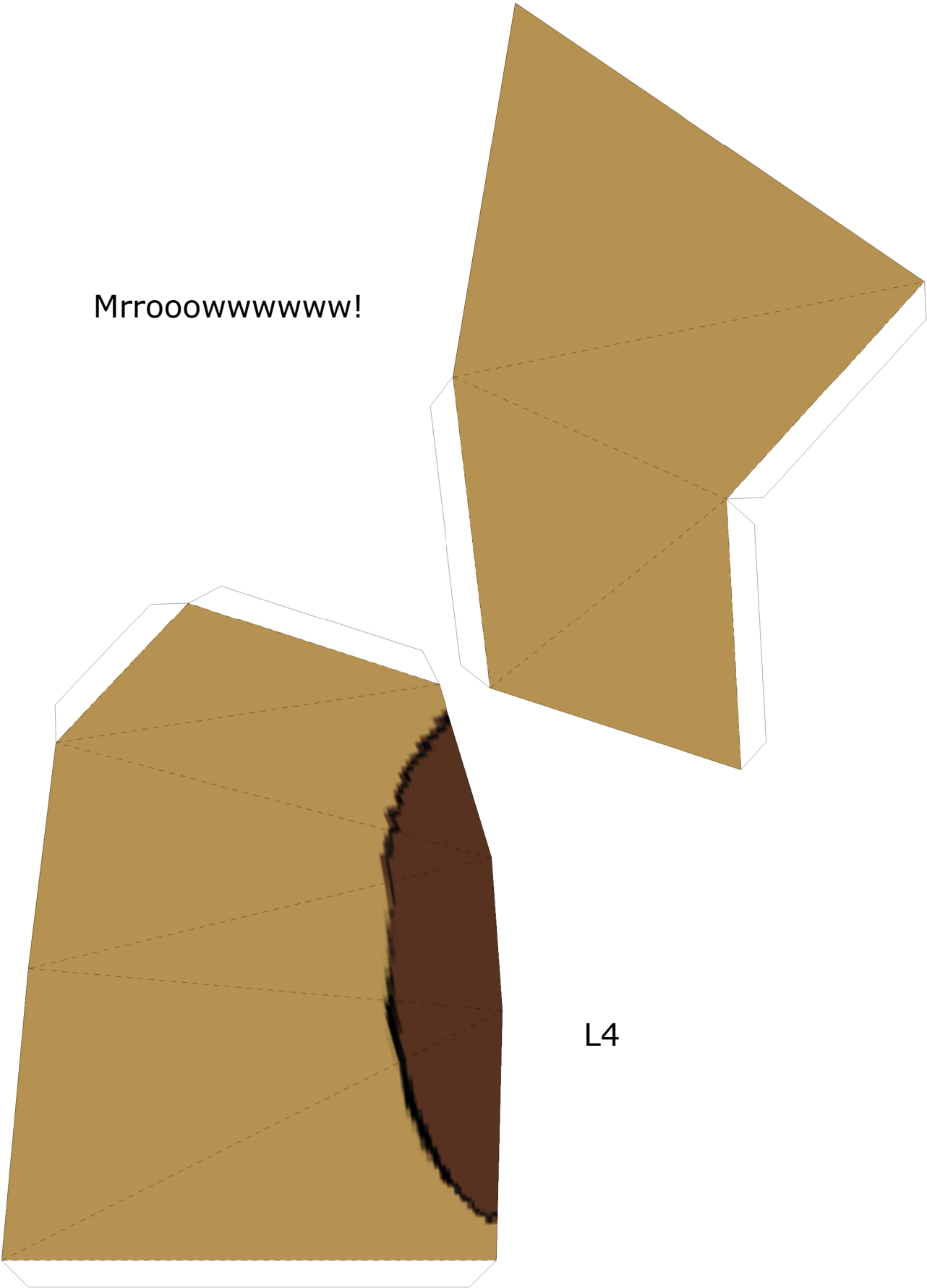
Legs are numbered and labeled like this:
L1 is left 1 [front],
R5 is right 5 [toward the back].

L2



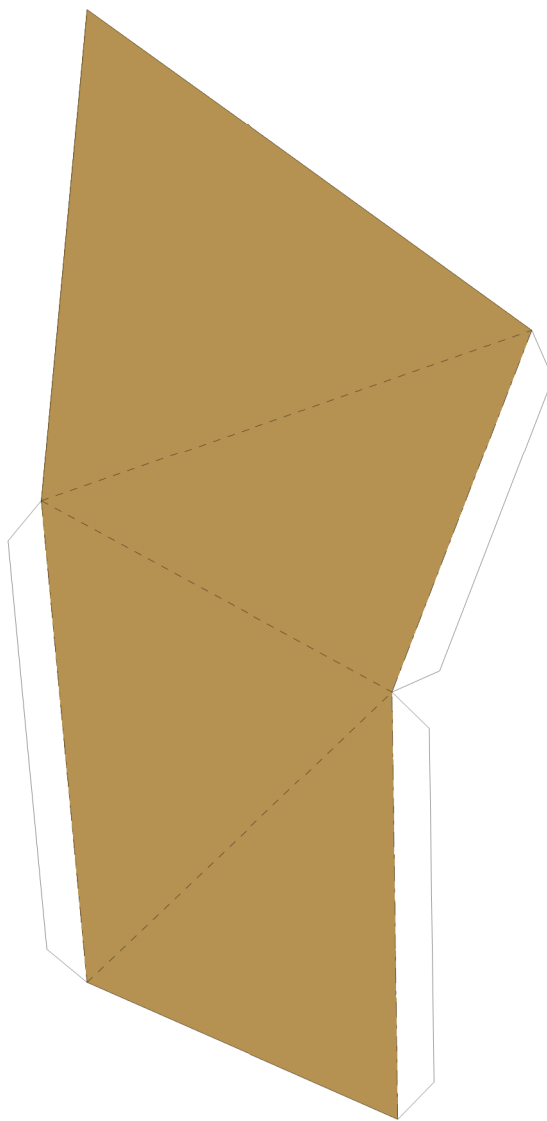
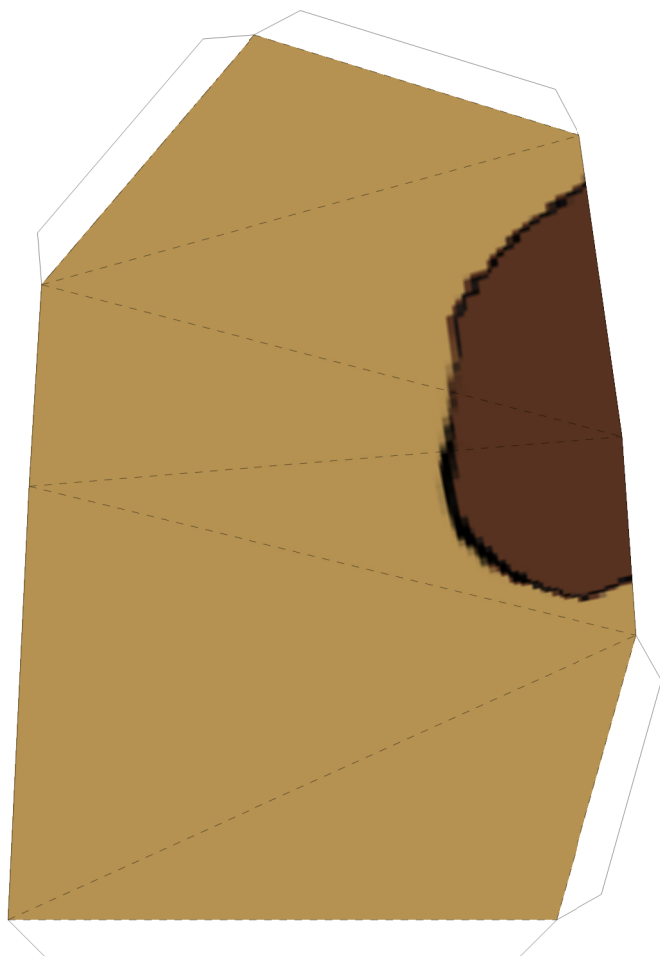
L3

Mrrooowwwwww!

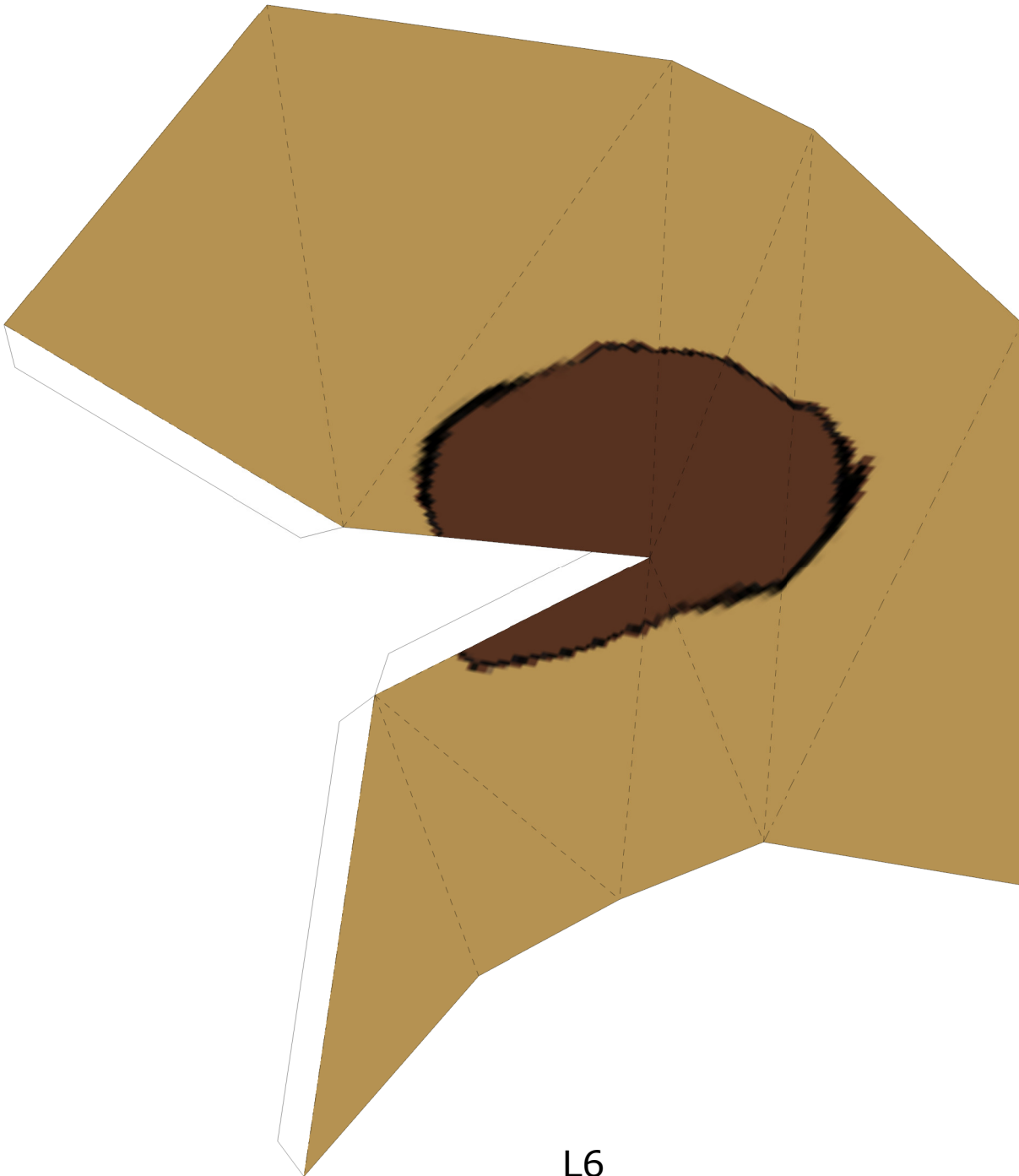


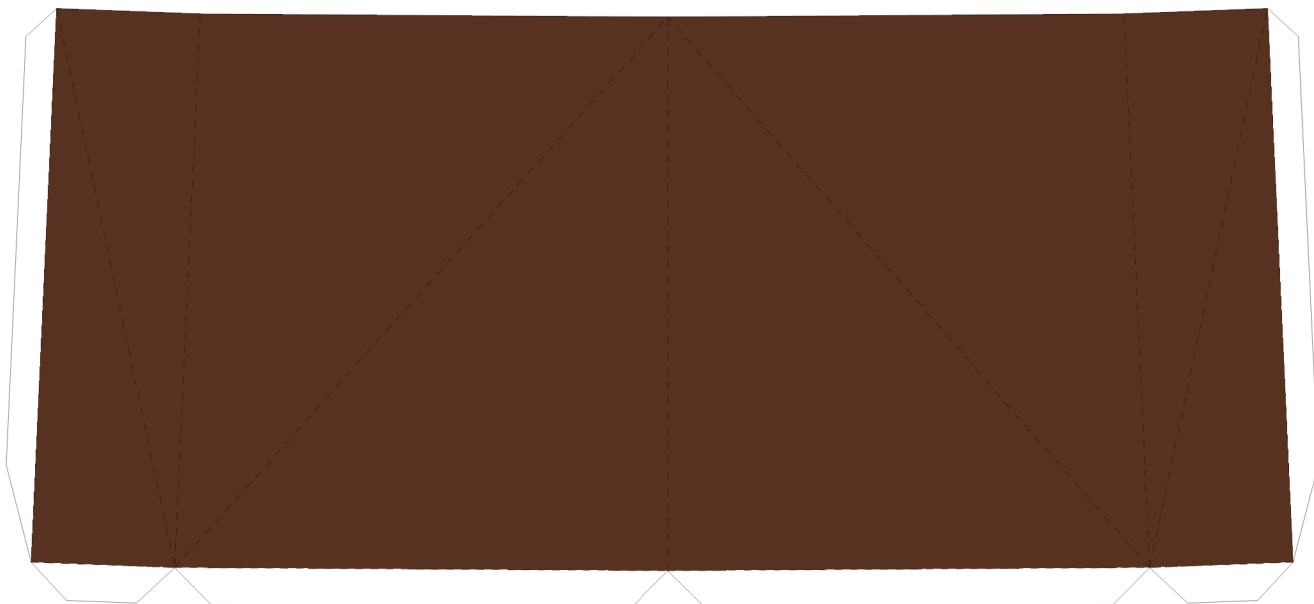
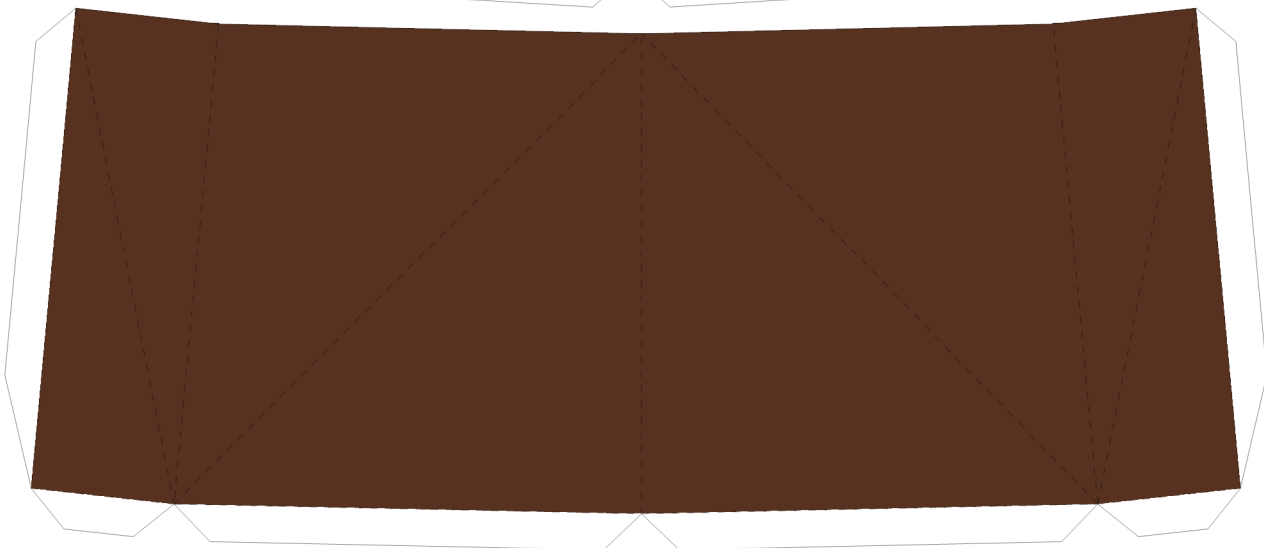
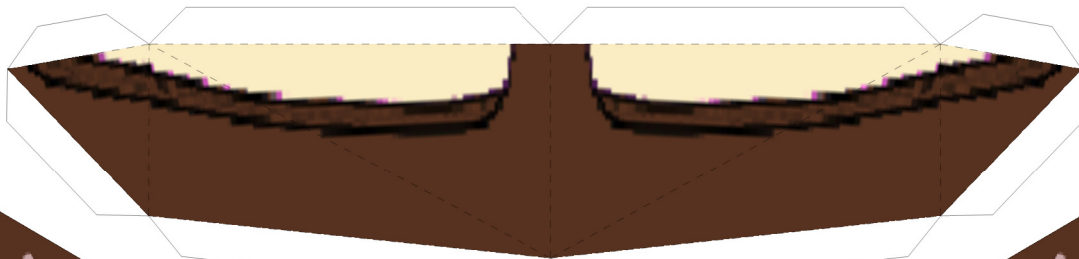
L4

L5

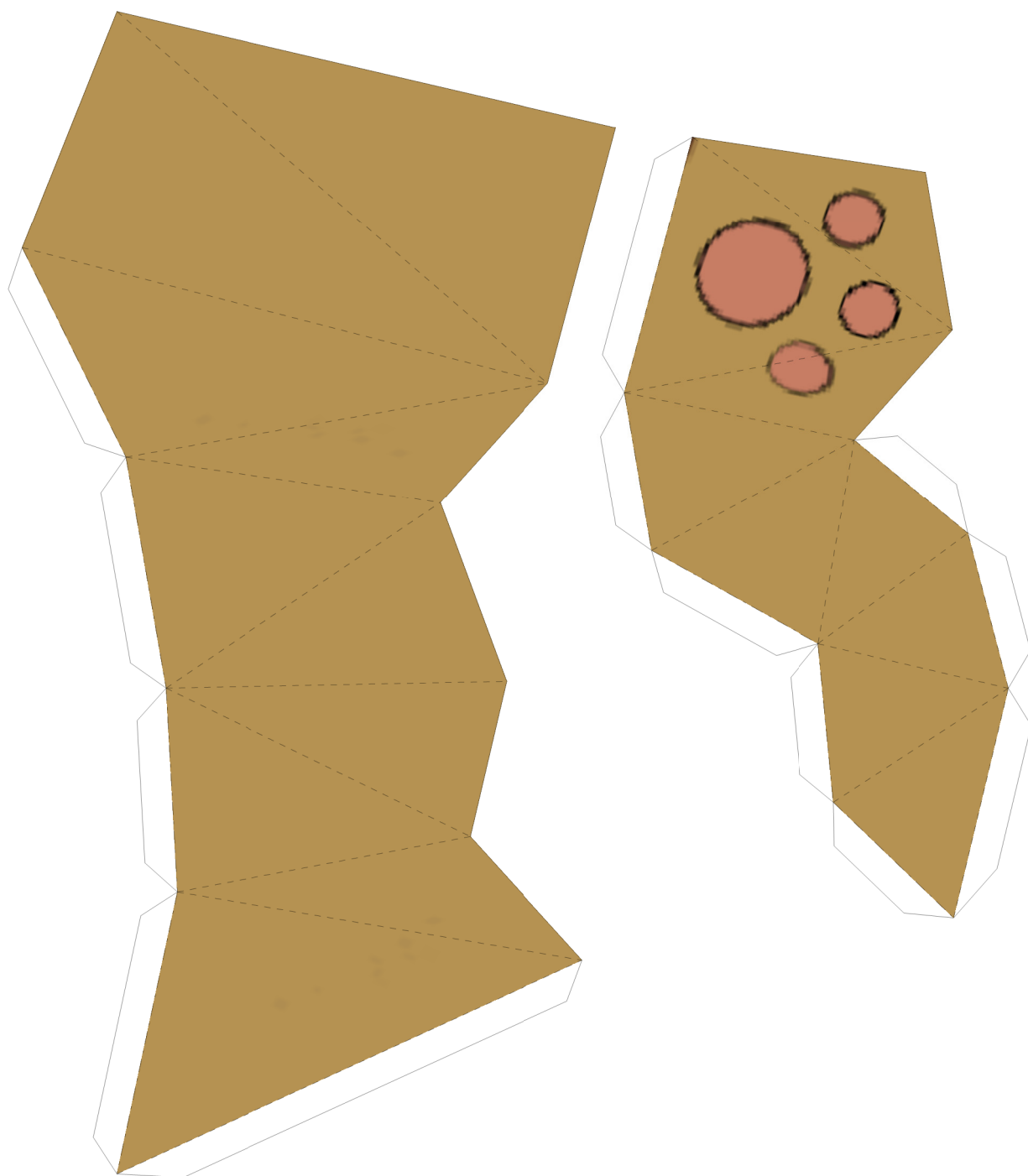


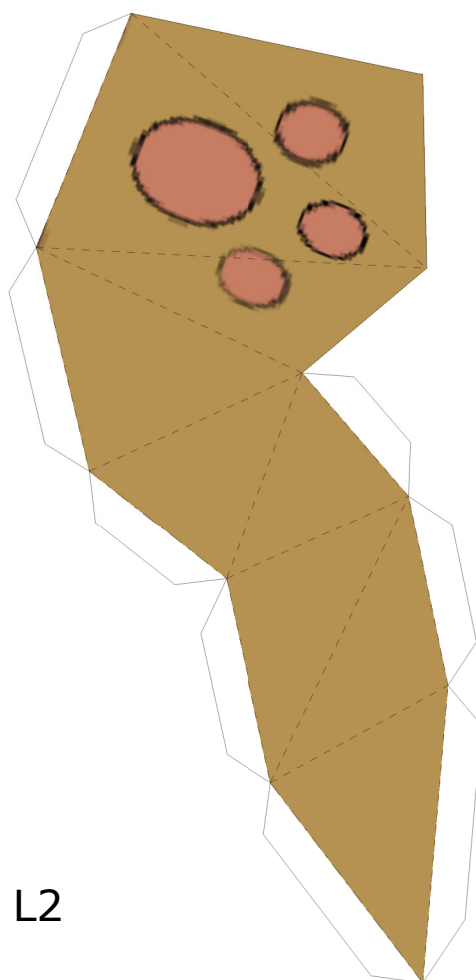
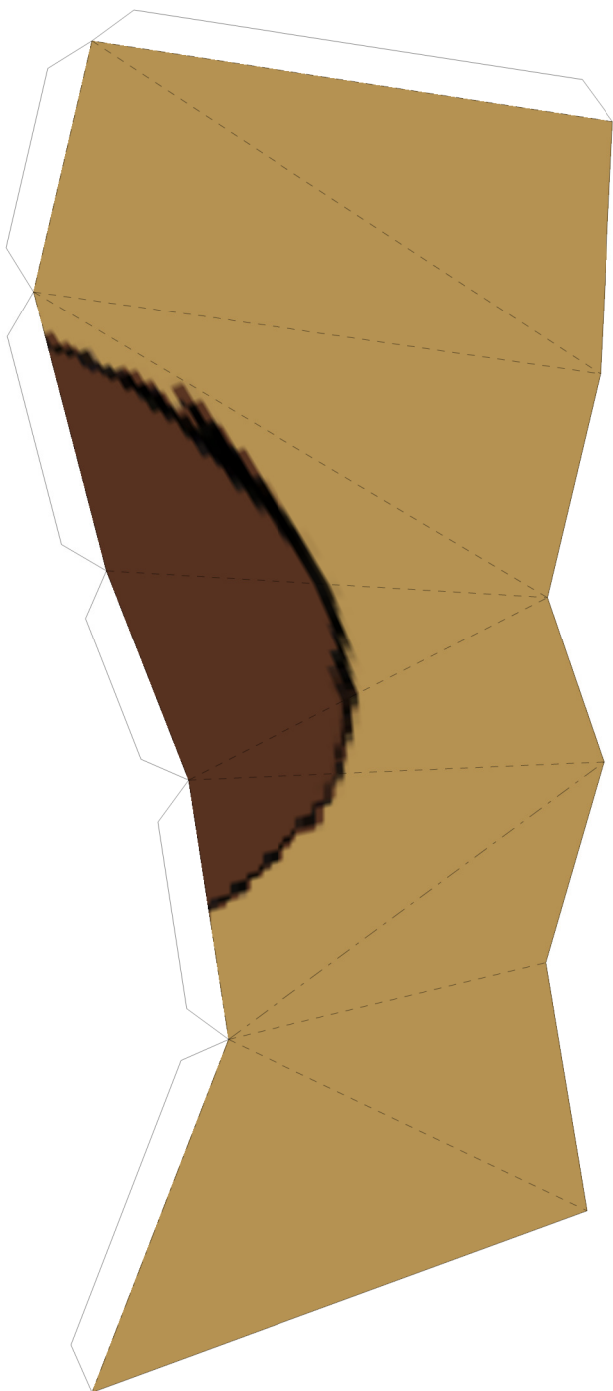
You can change Catbus's destination to either 'Mei' or 'Shichikokuyama' by choosing Texture setting.





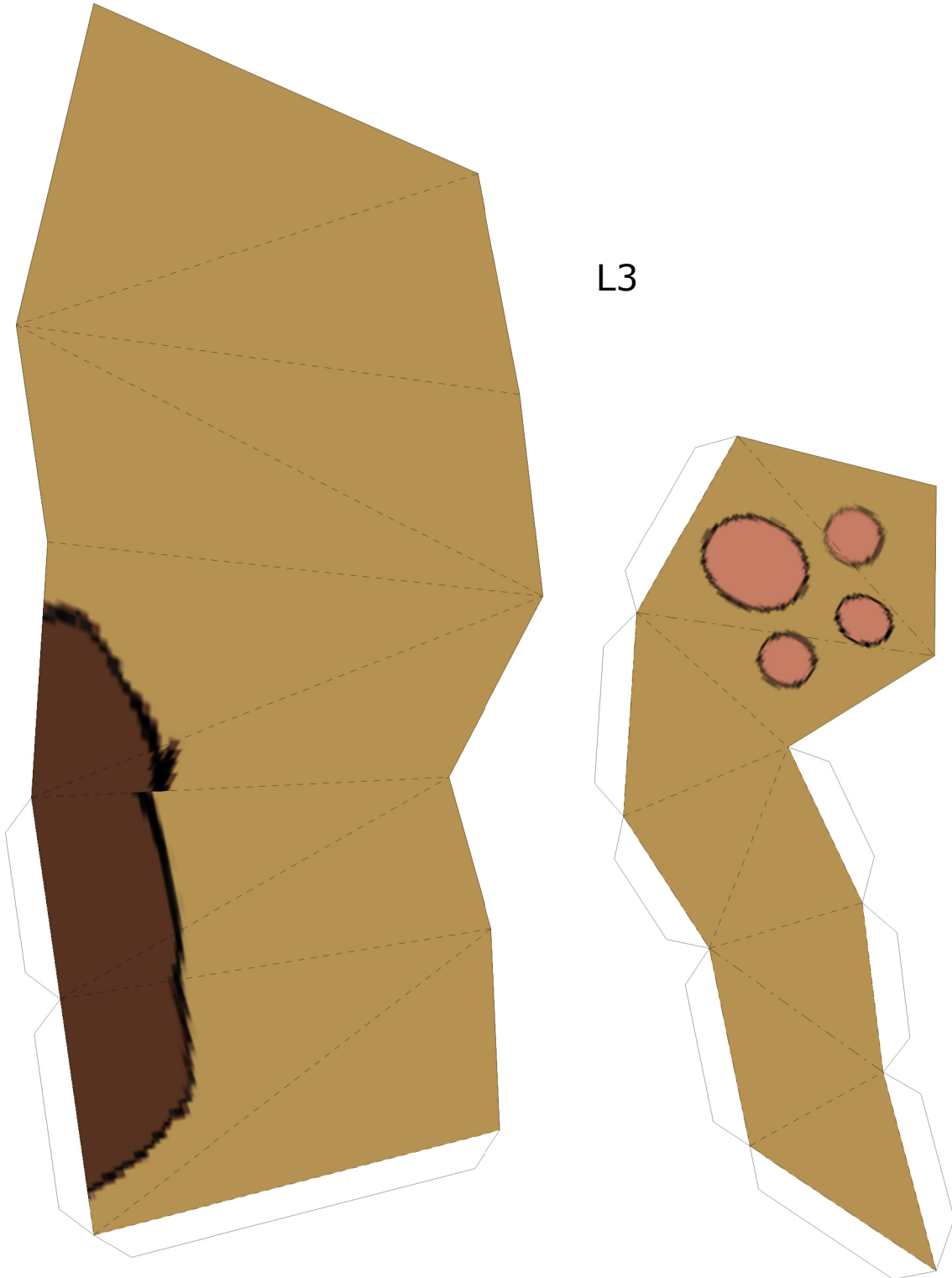
L1



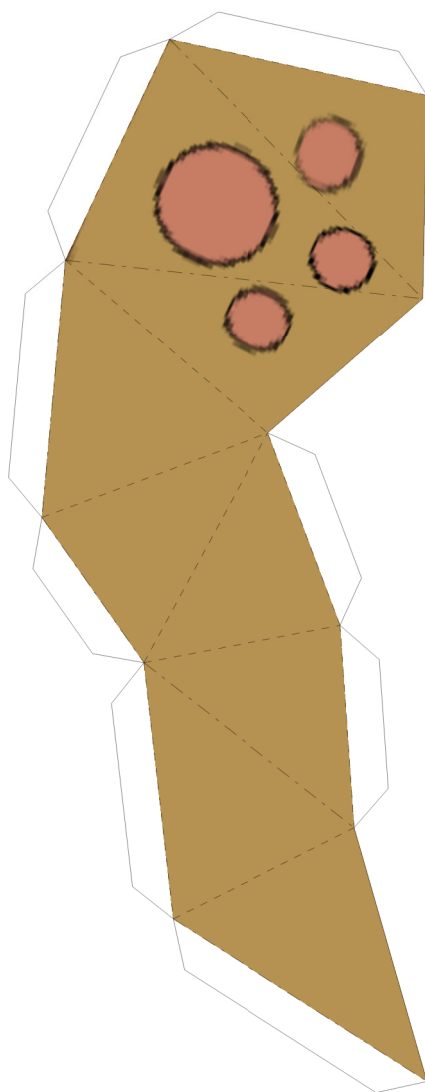
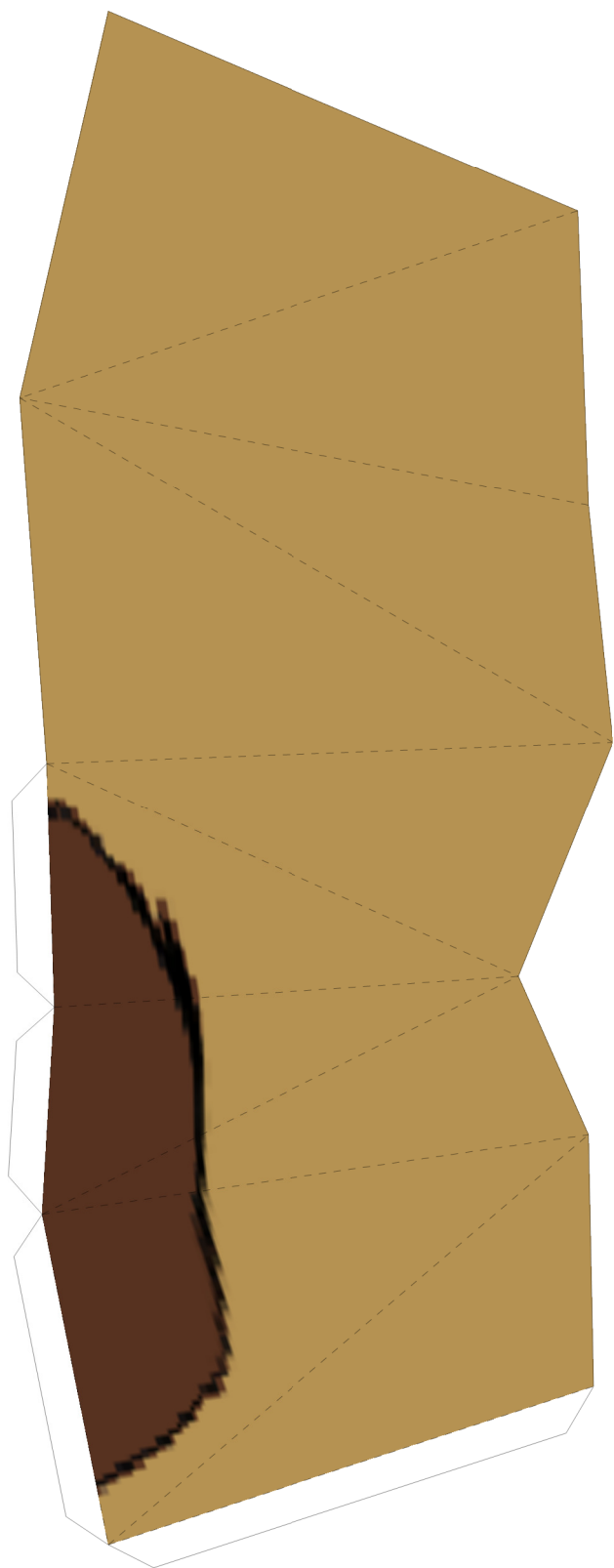


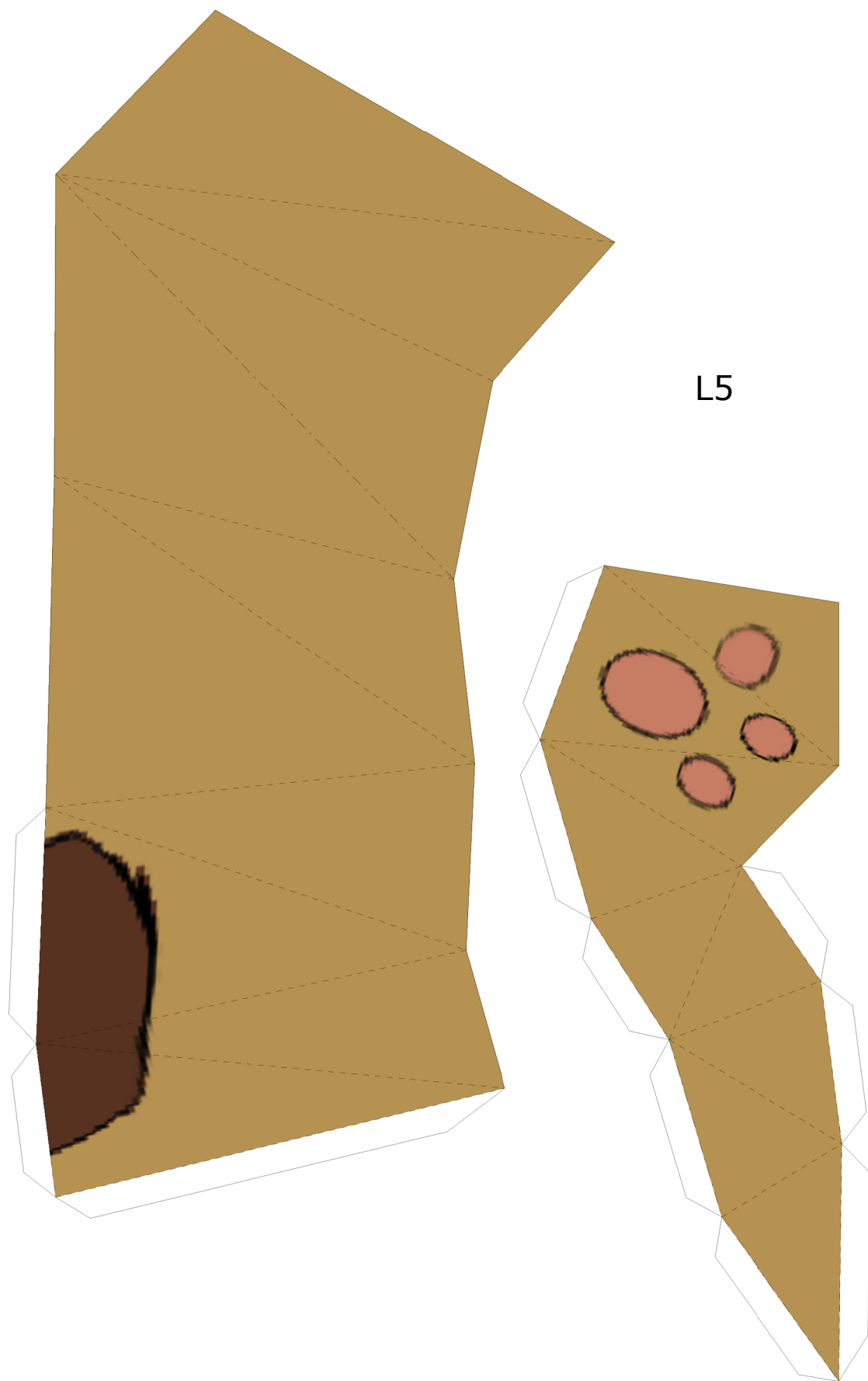
L2

L3

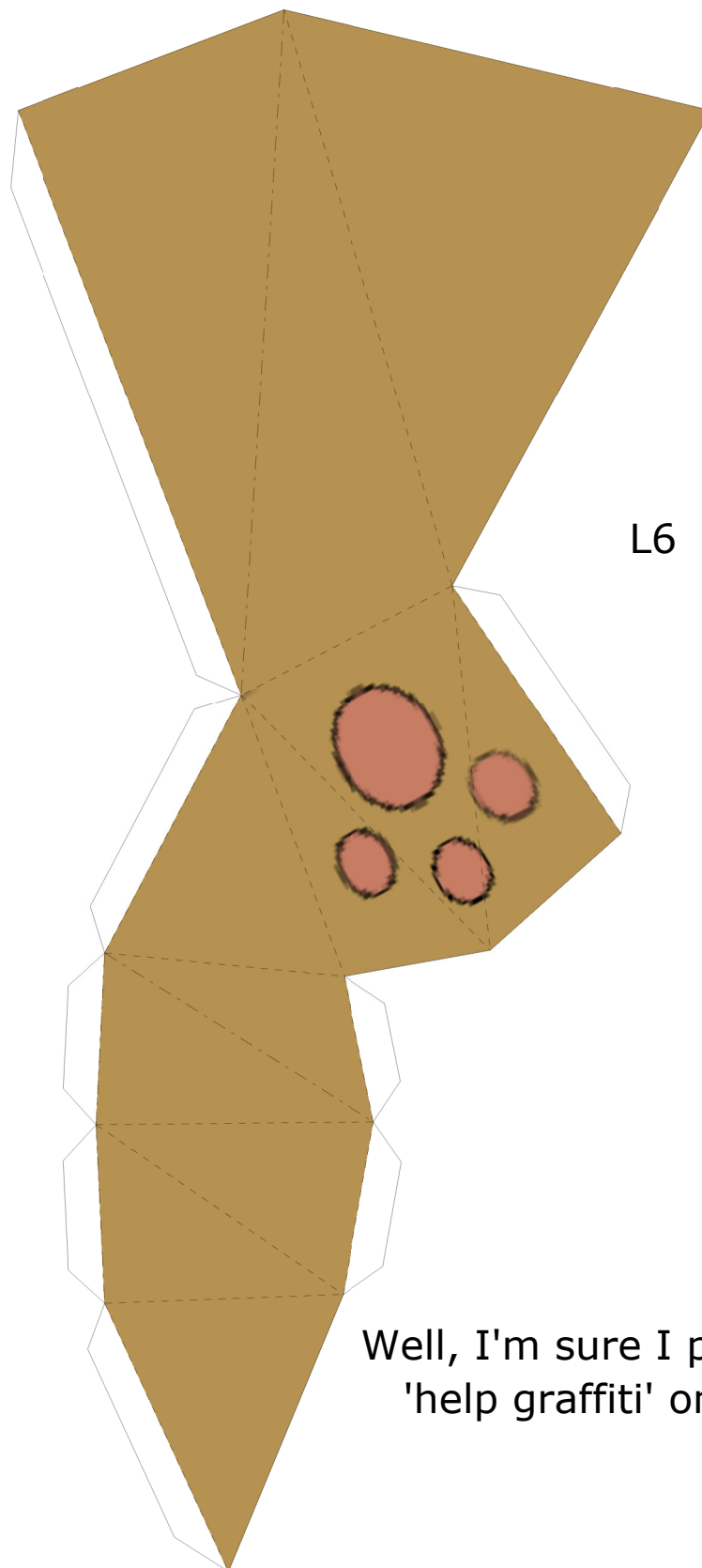


L4



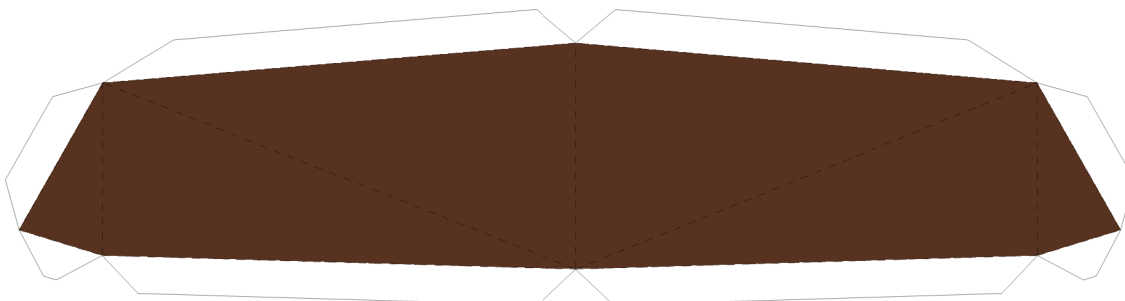
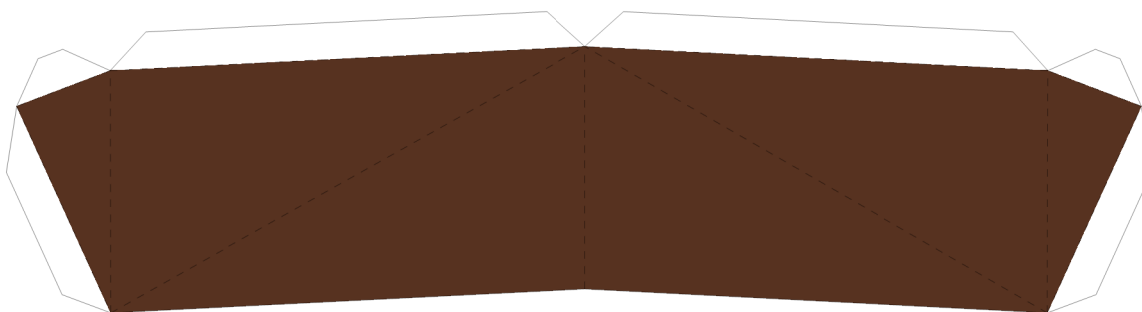
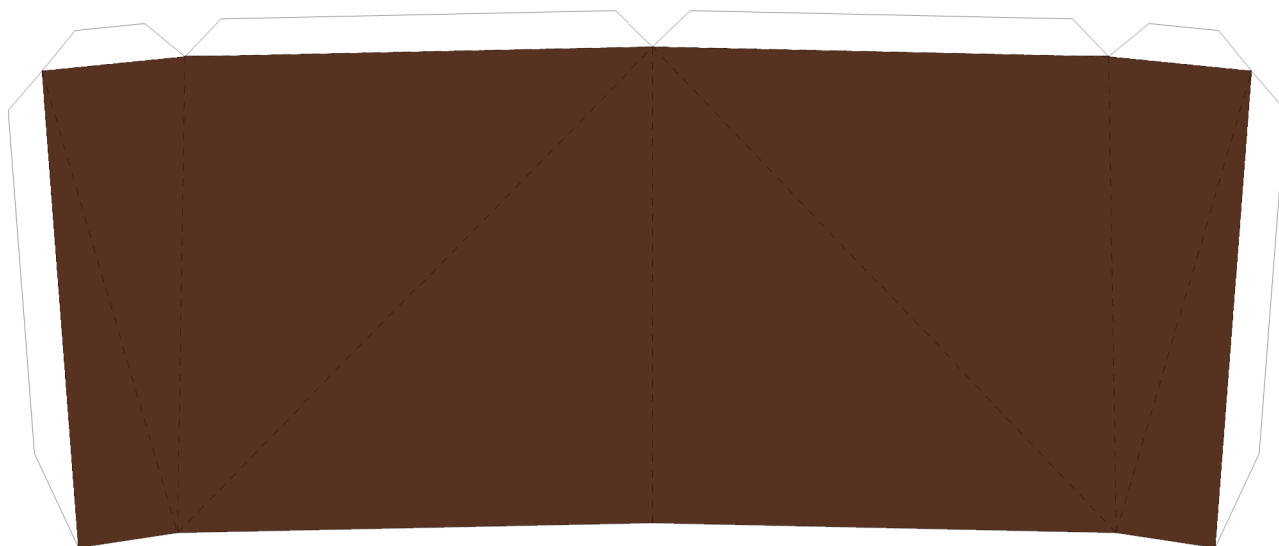
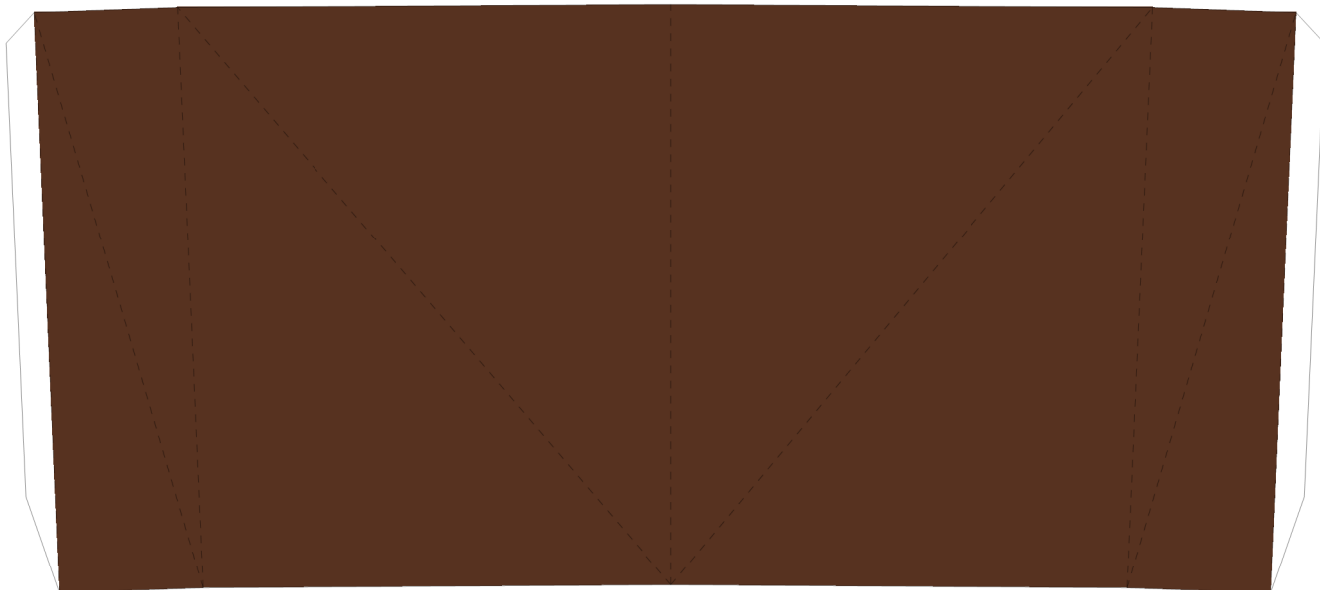


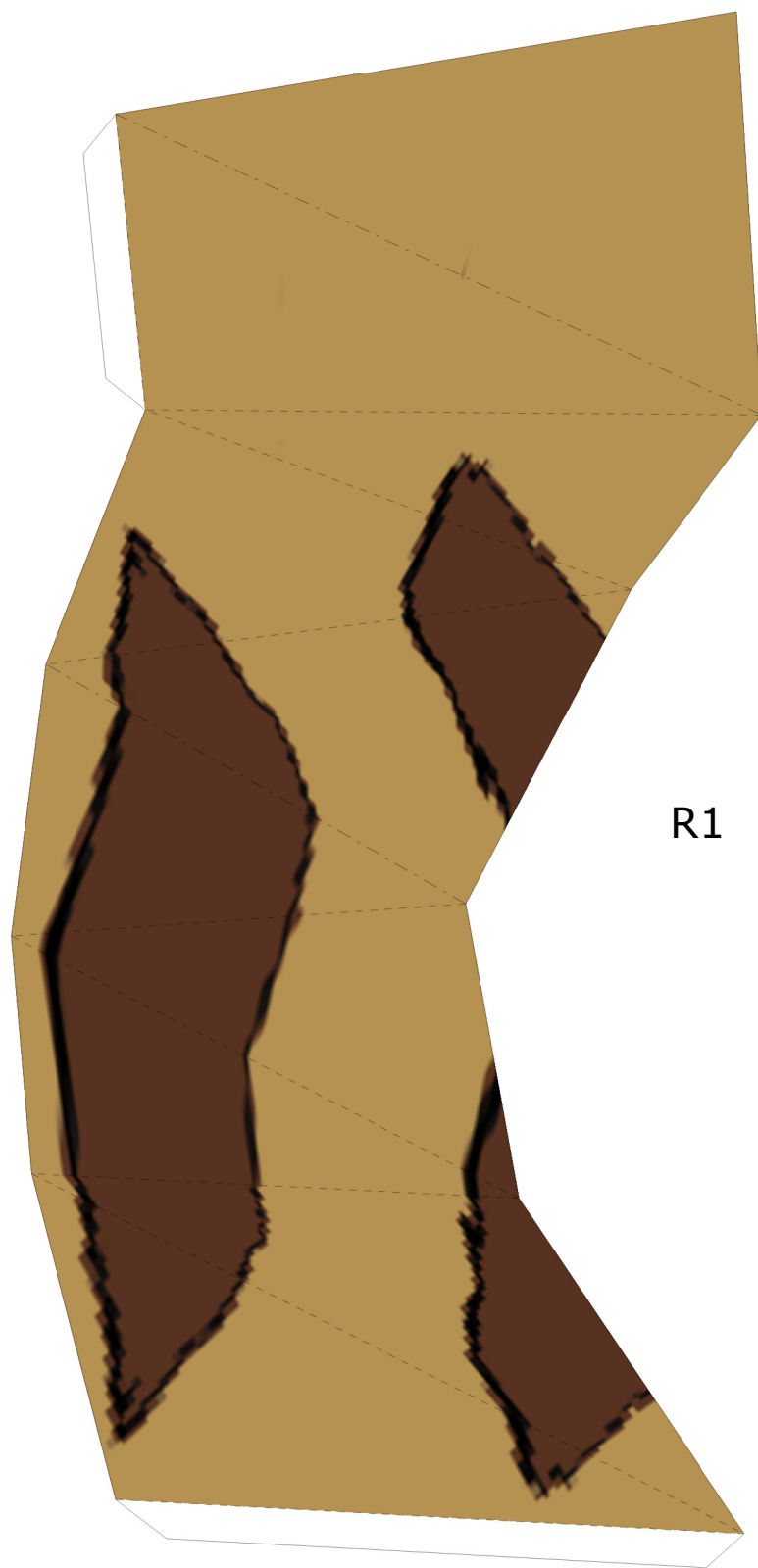
L5



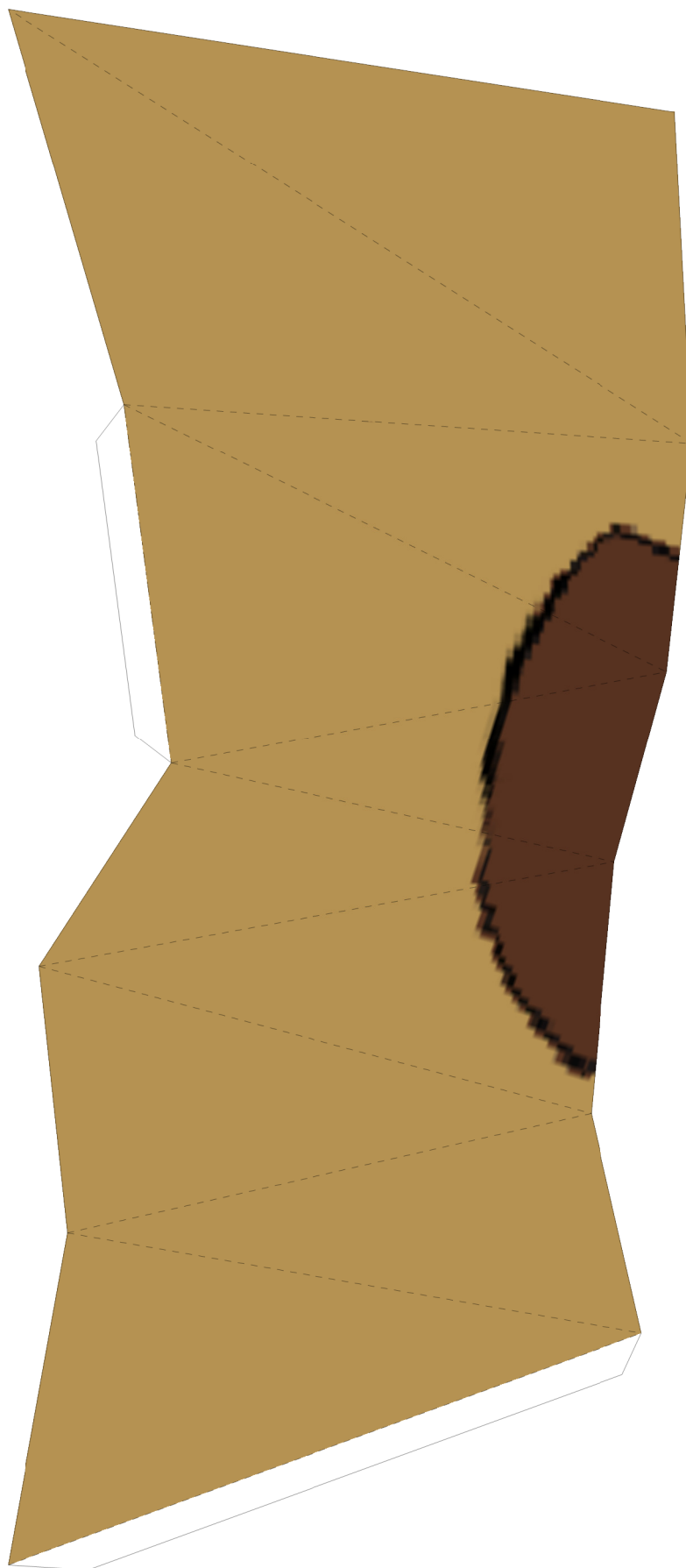
L6

Well, I'm sure I put enough
'help graffiti' on here.

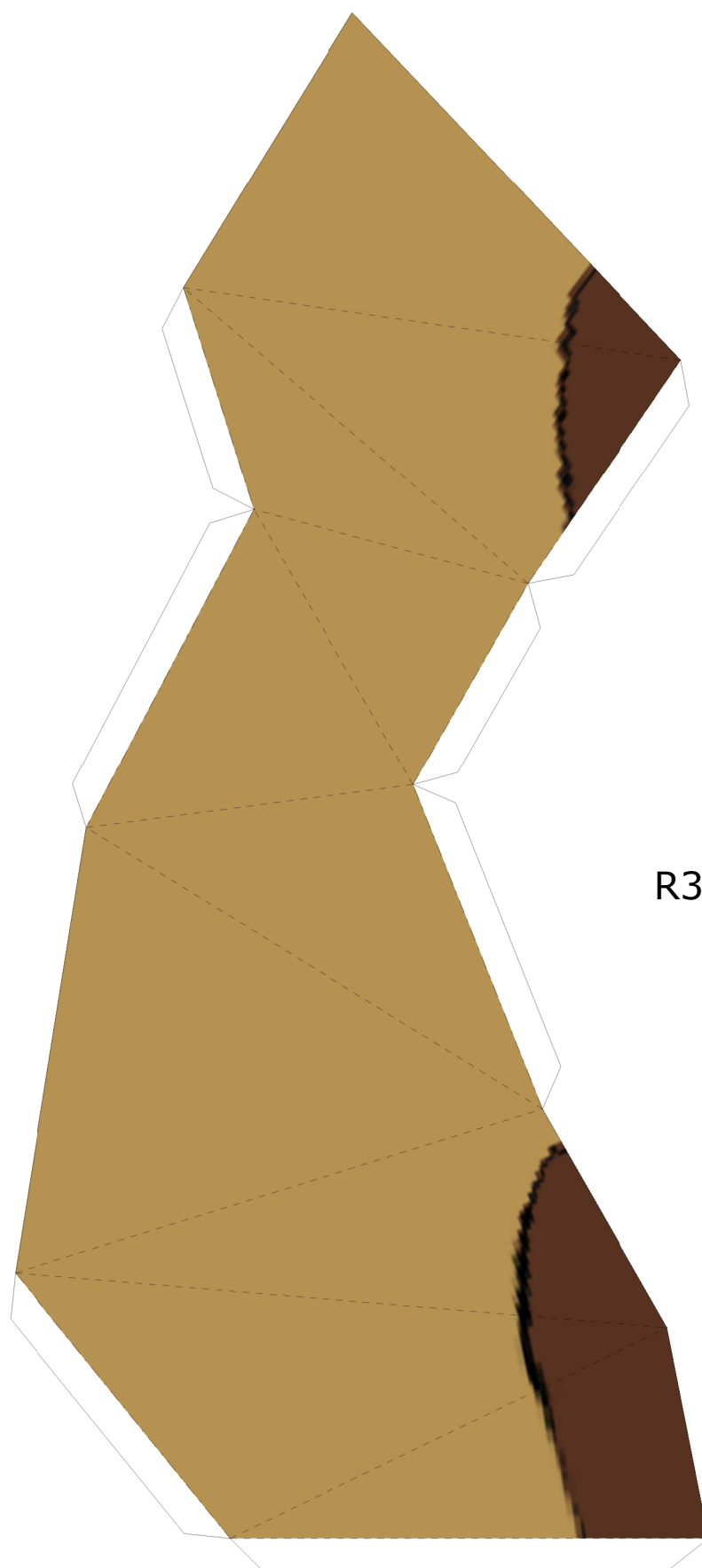




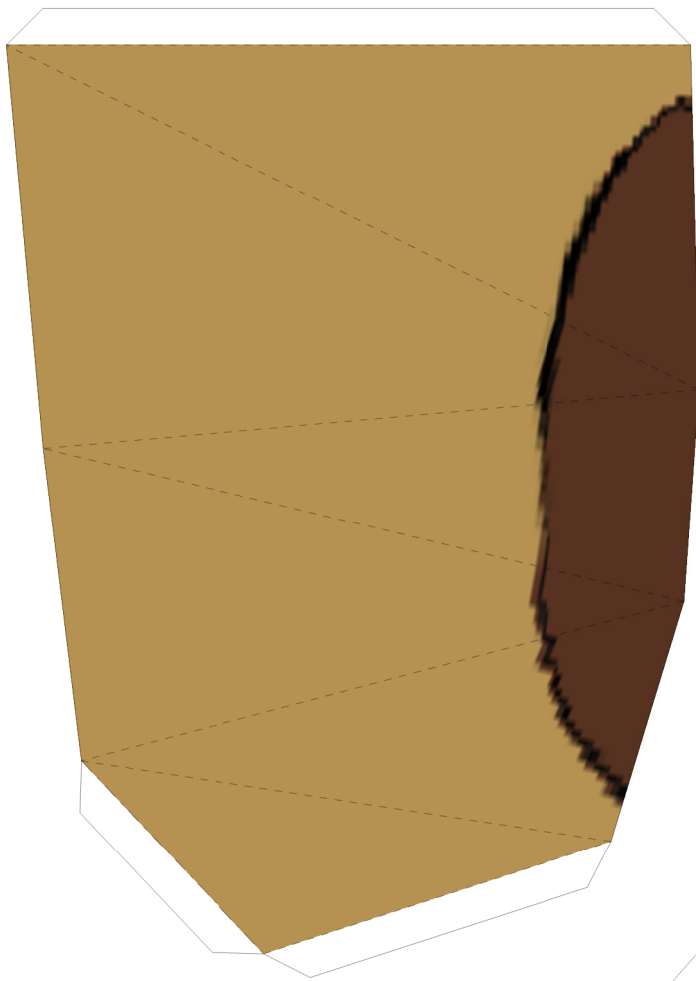
R1



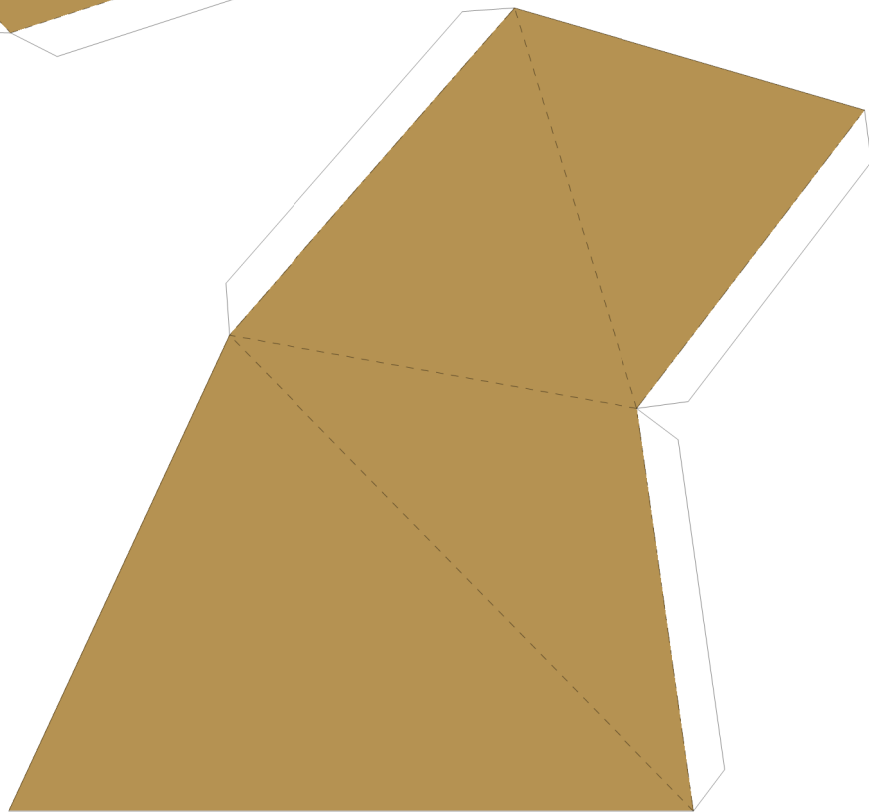
R2

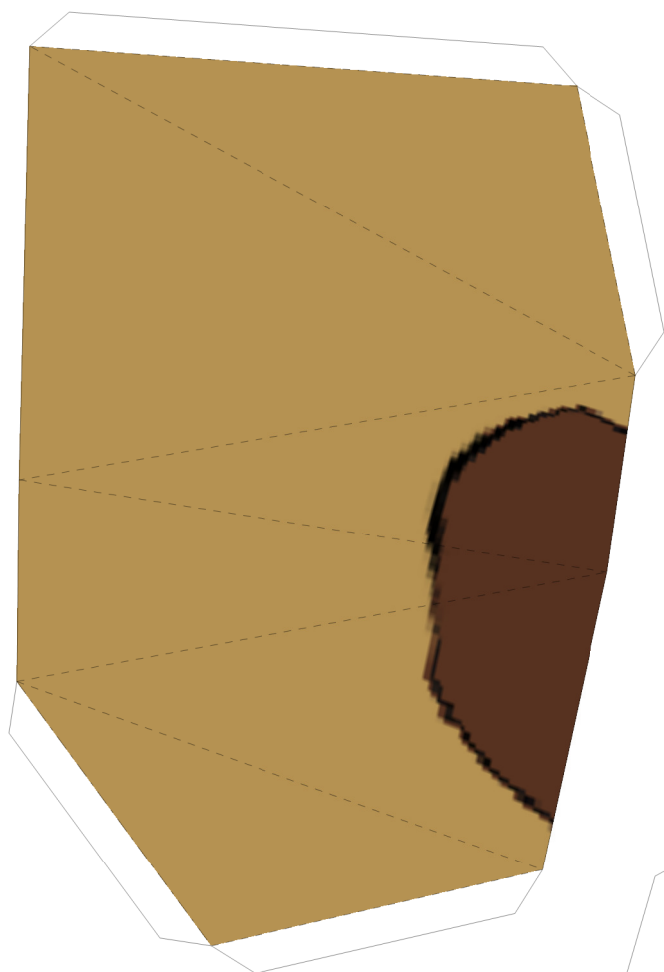


R3

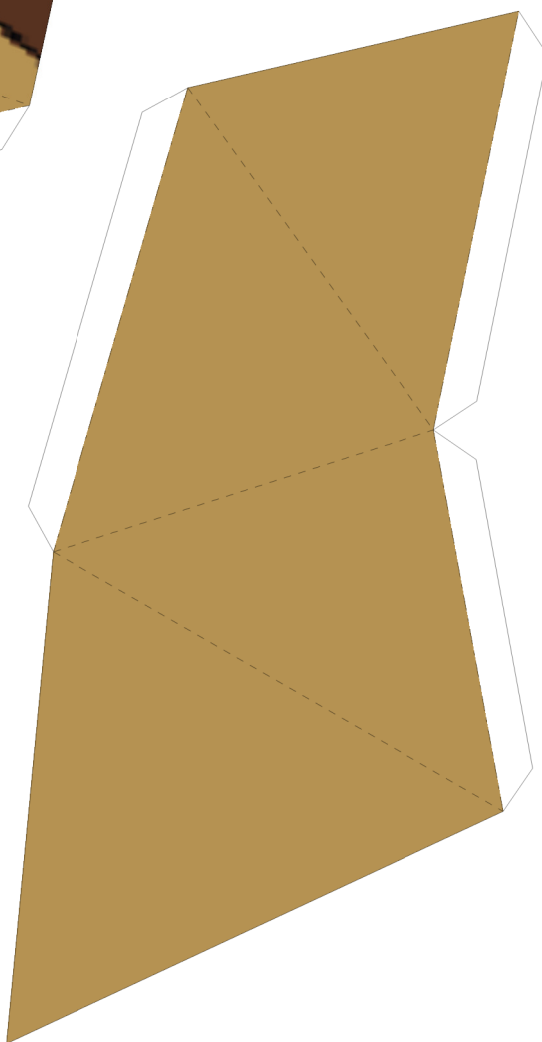


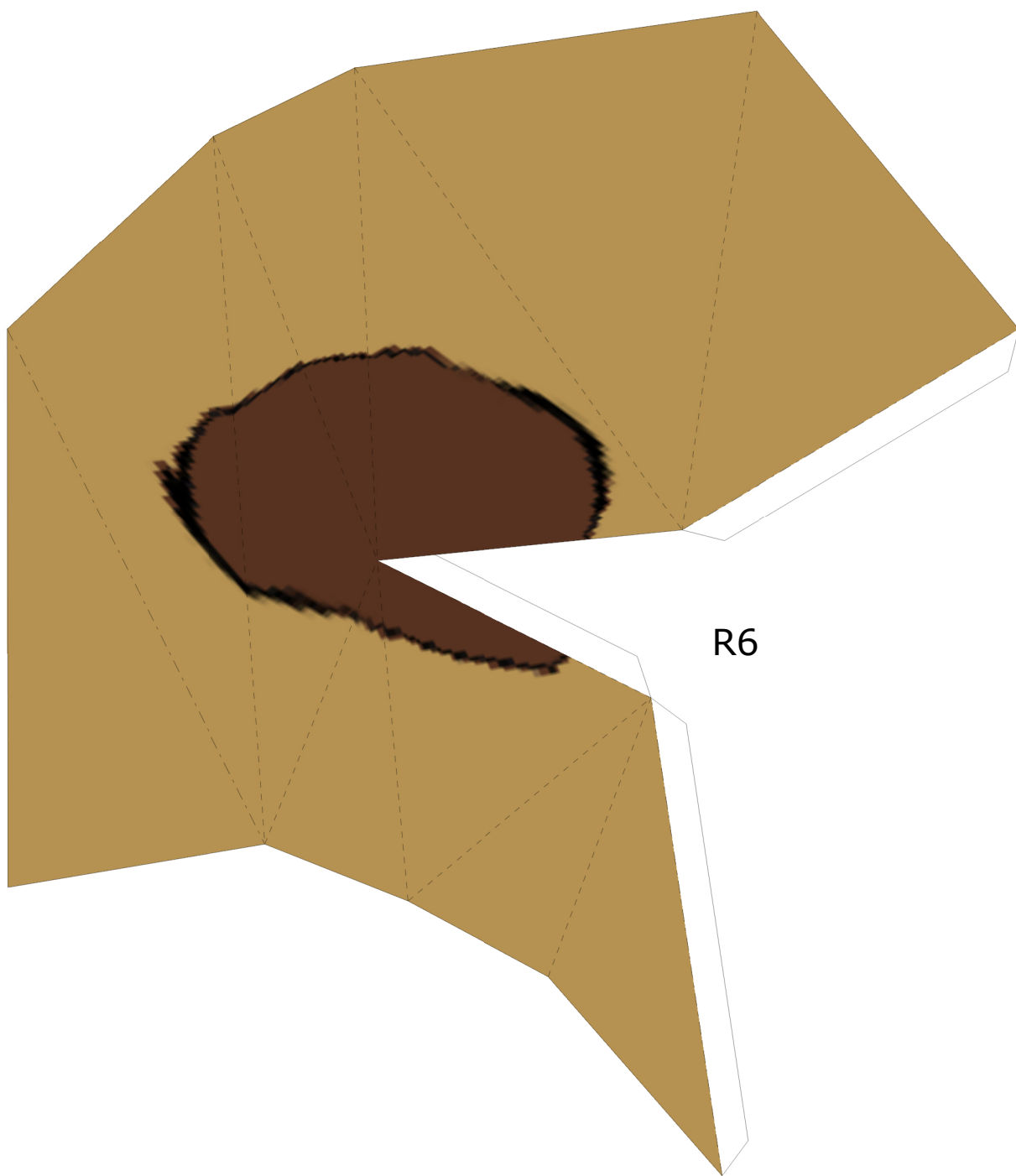
R4





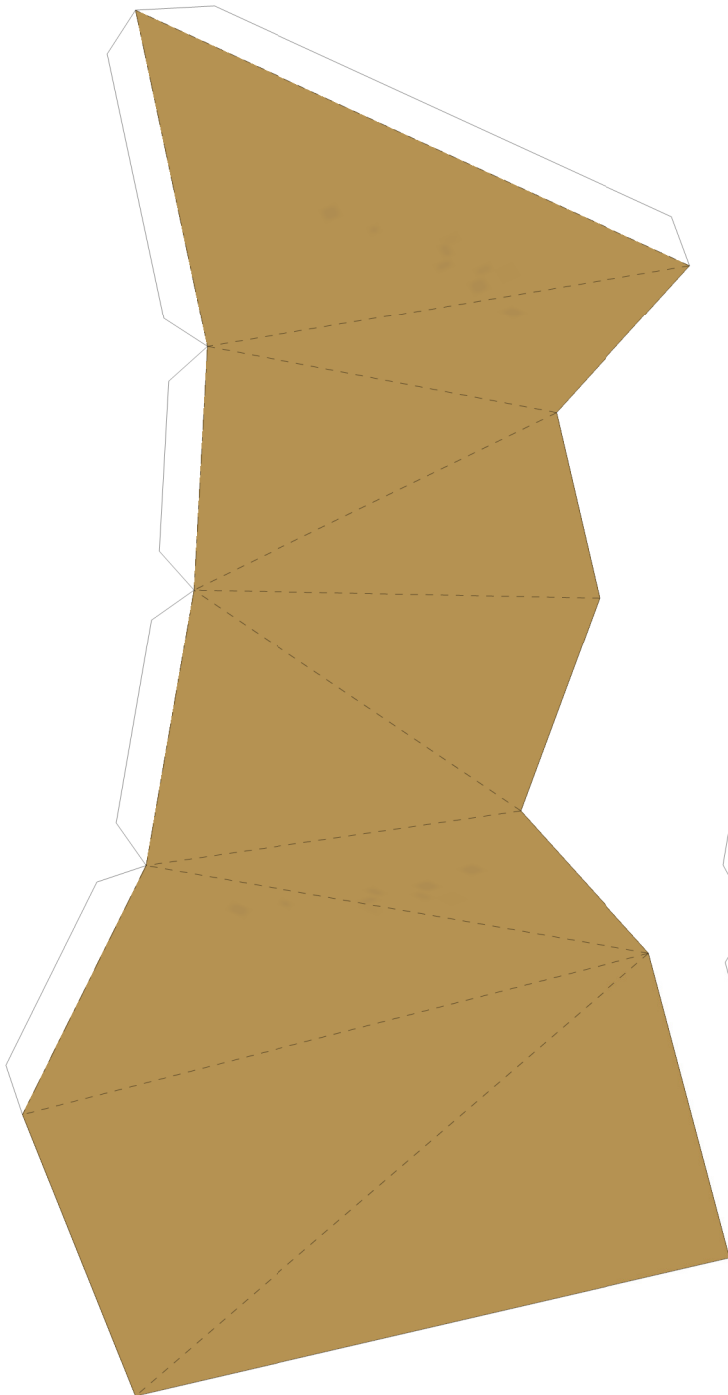
R5



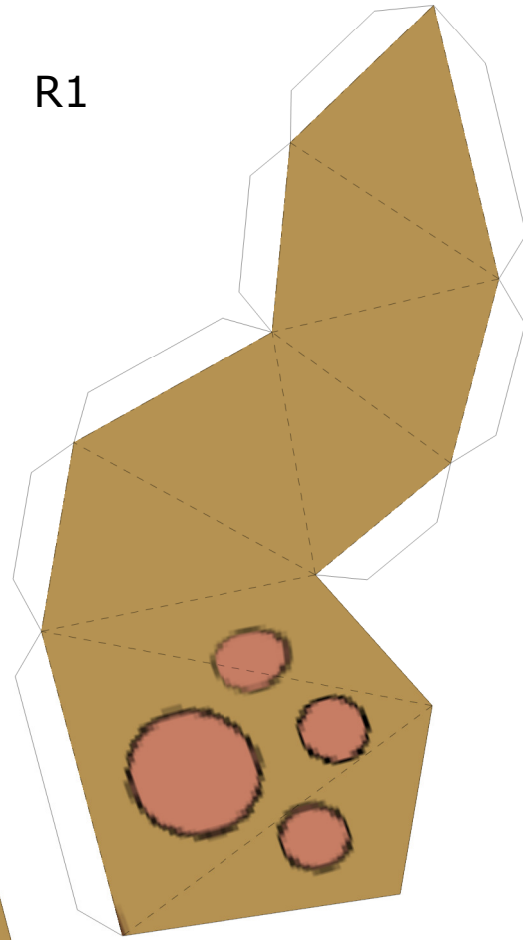


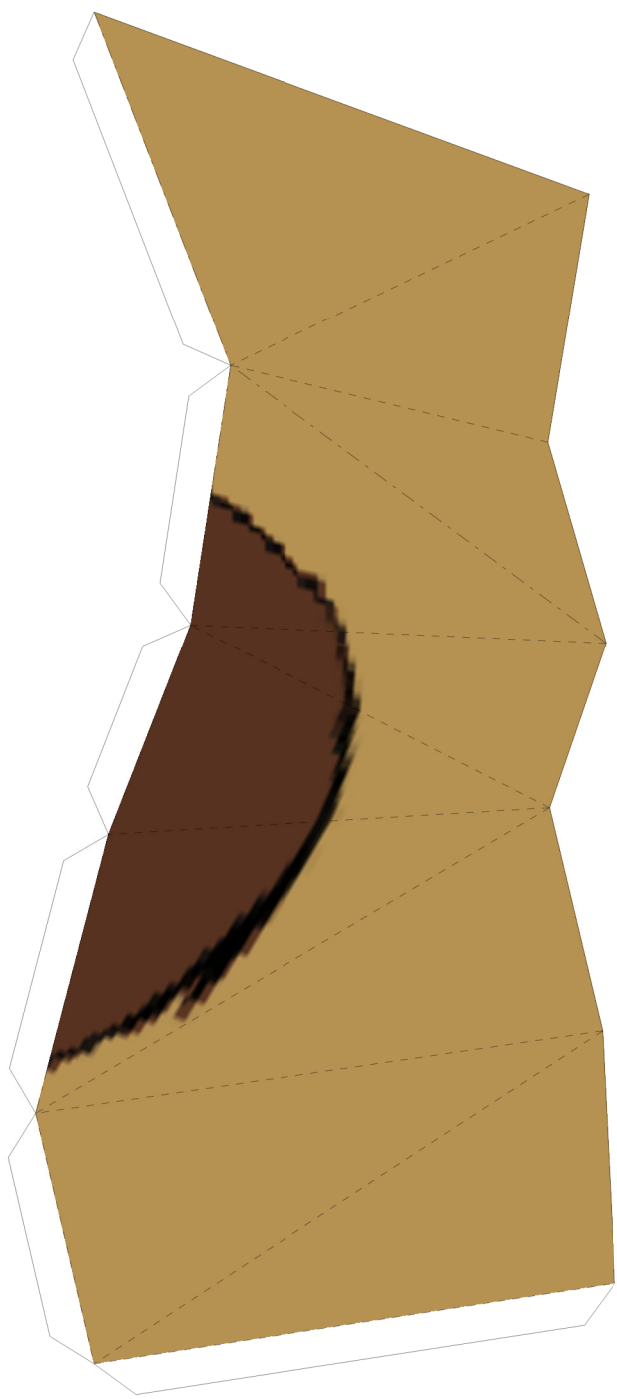
R6



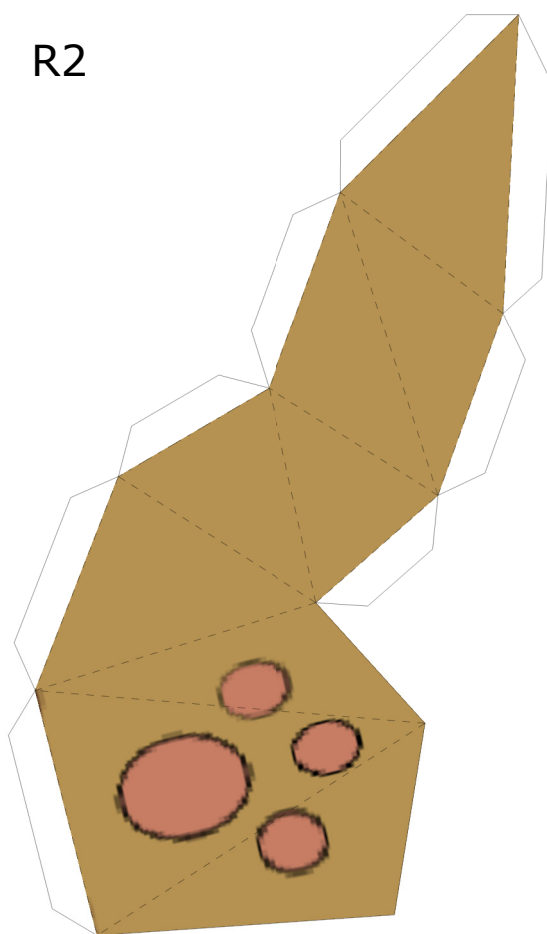


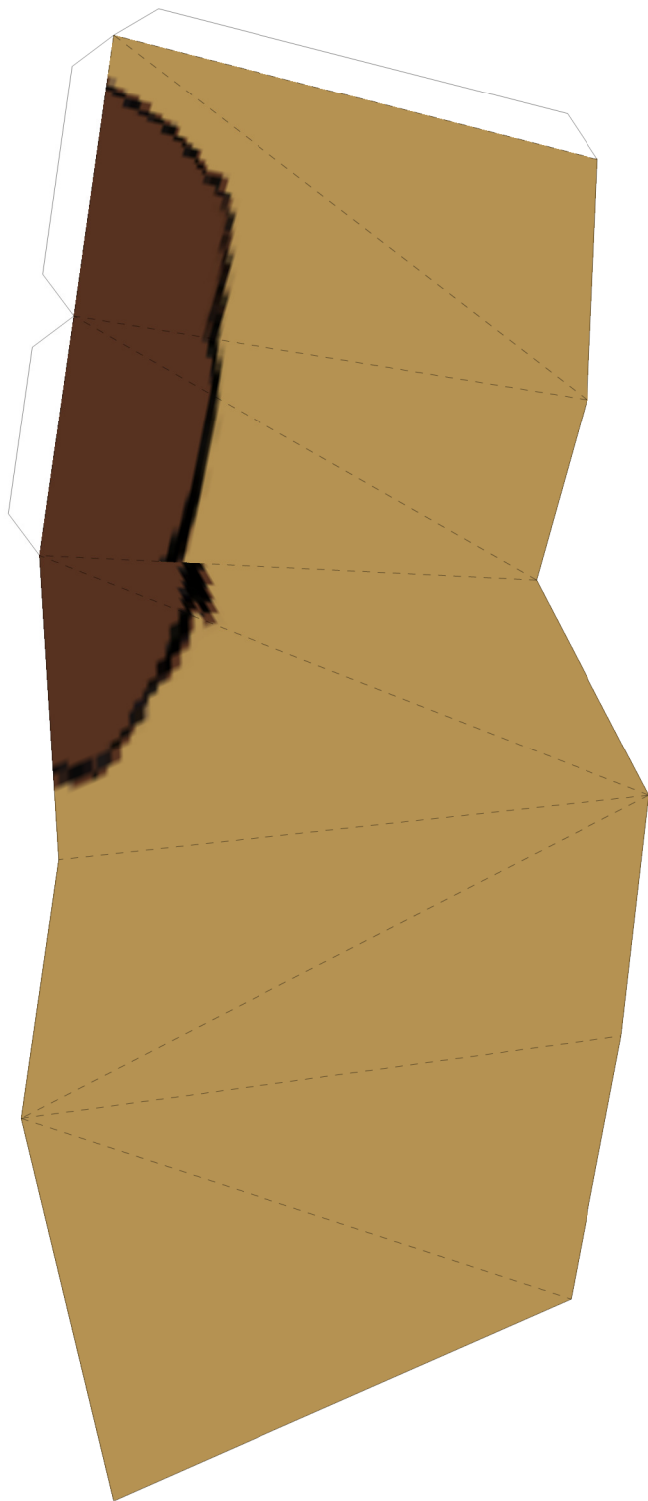
R1



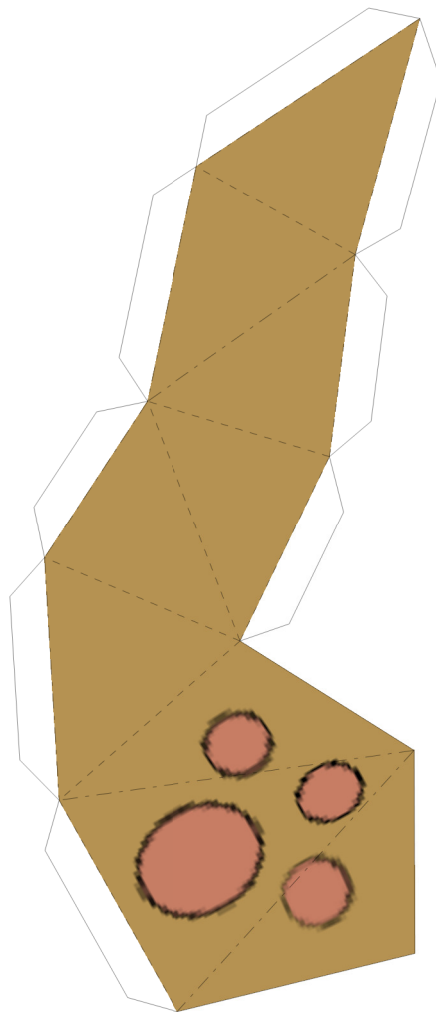


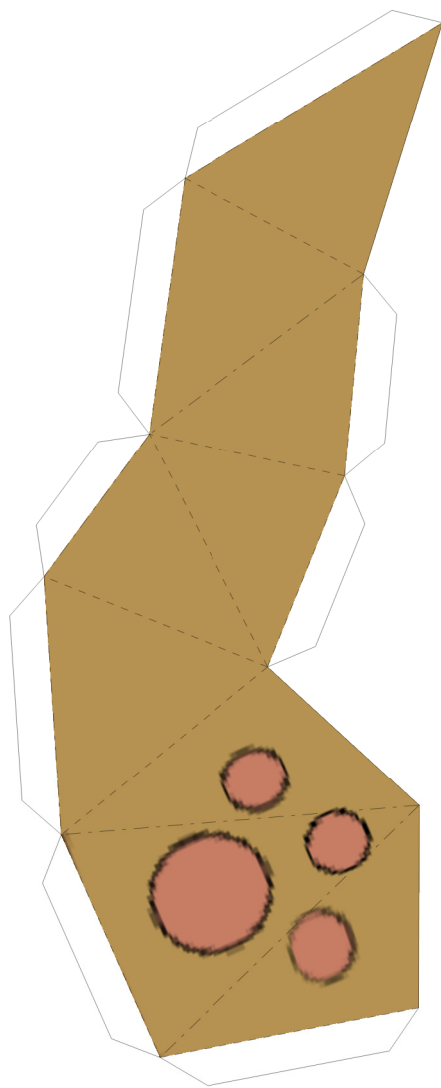
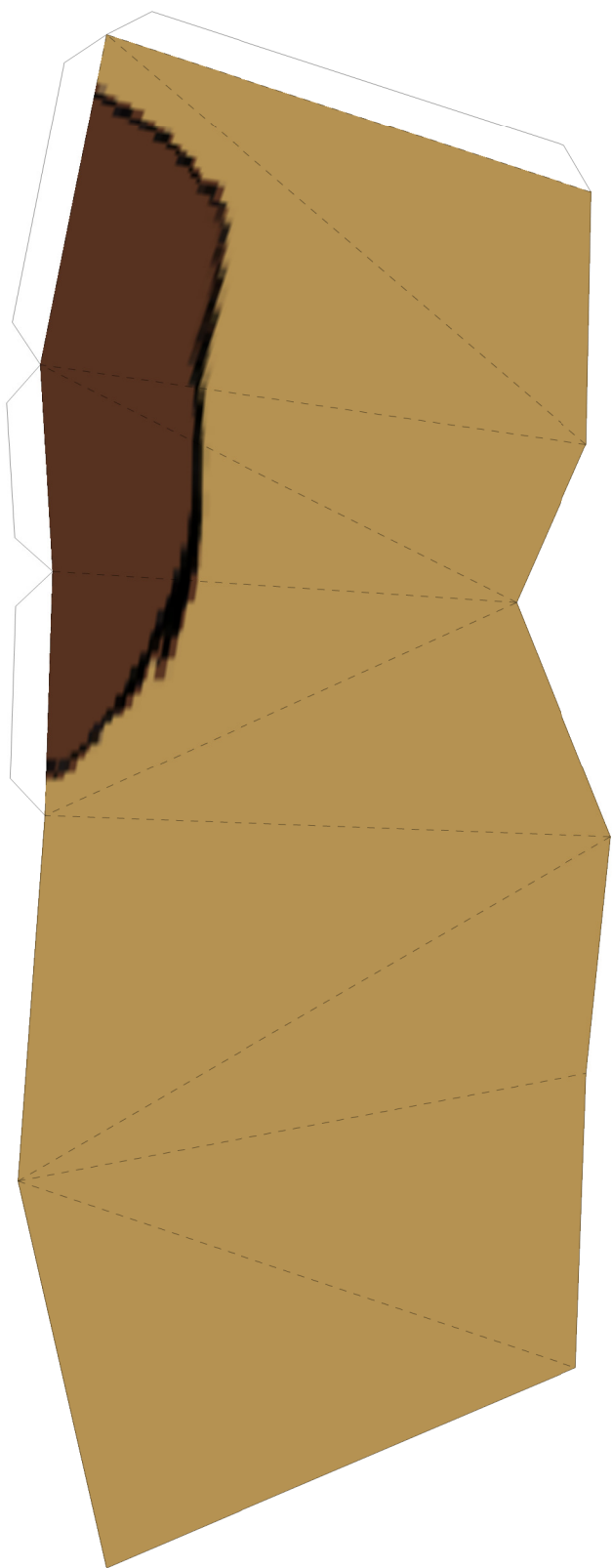
R2





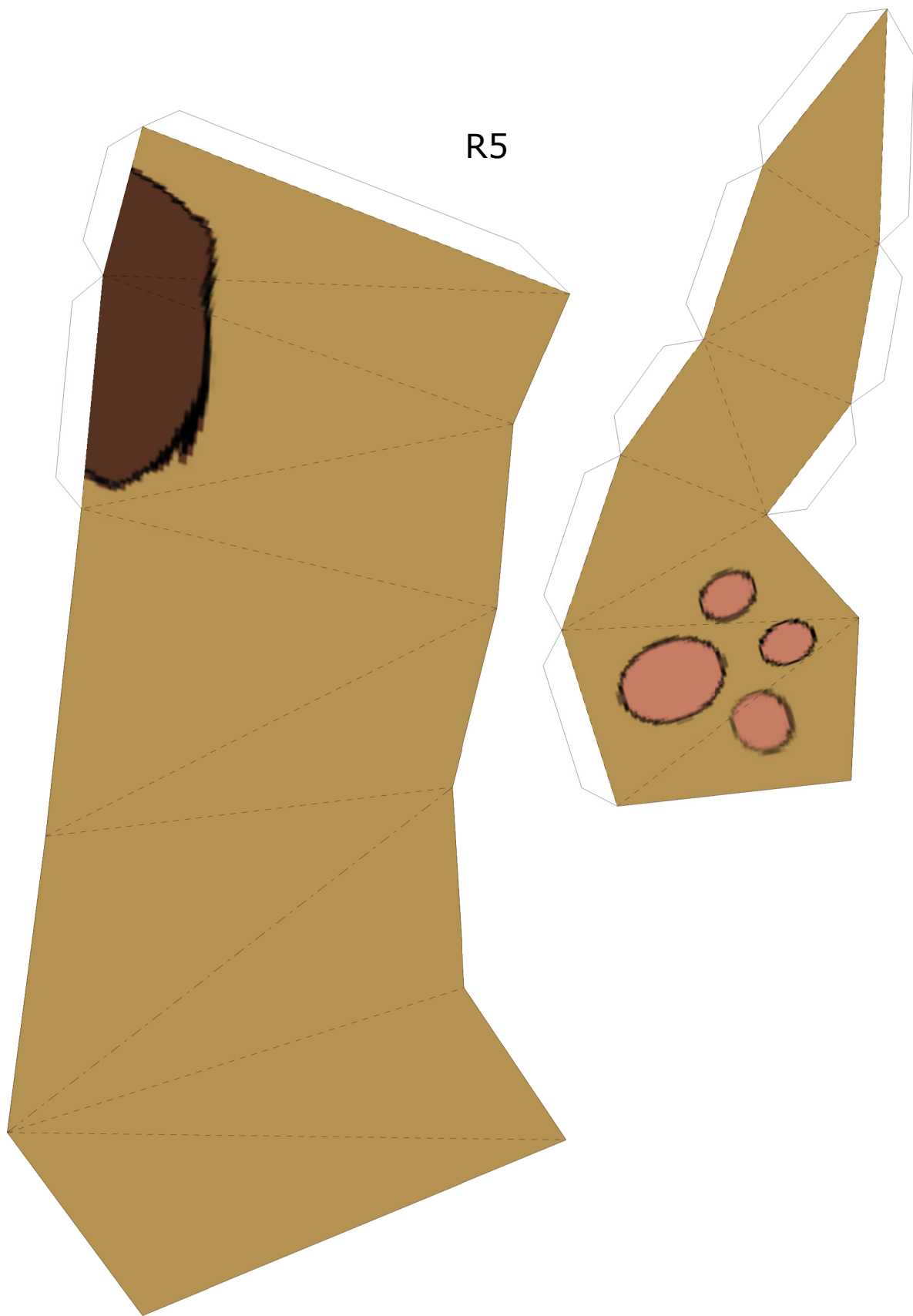
R3

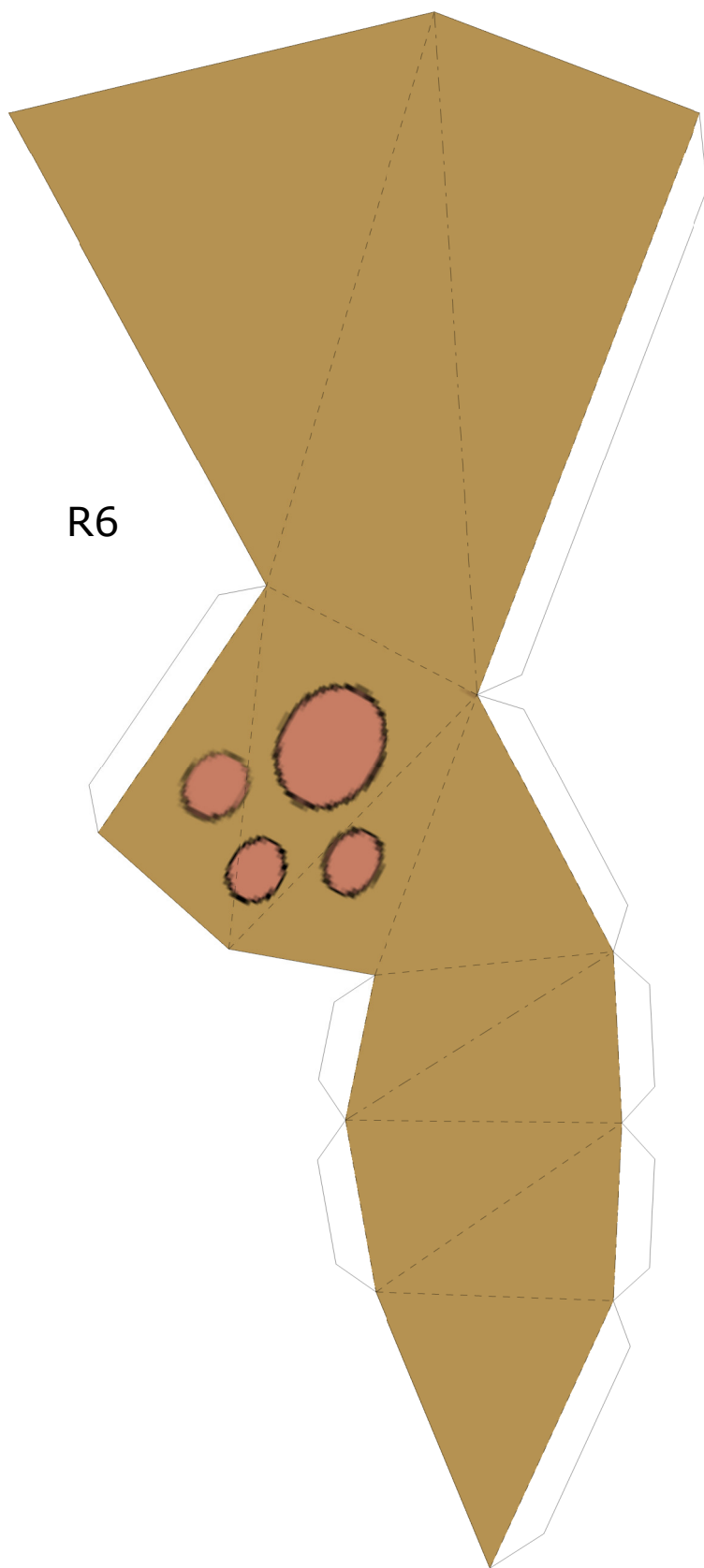




R4

R5





R6