



## Hippopotamus



### Tools

Scissors  
Paste, or woodwork glue  
Stencil pen, or bodkin  
Ruler  
Pencil

### Notation Key

— Scissors line  
..... Mountain fold  
- - - Valley fold  
+ Glue spot  
○ Glue reverse side  
A1, B1 Parts No.

◆ The Assembly instructions are divided into four blocks: A (head), B (body), and C (legs and body). Follow the instructions for each block to assemble your hippopotamus.

◆★ marks a basic assembly technique that remains the same regardless of the part. Instructions are printed only for the first instance.

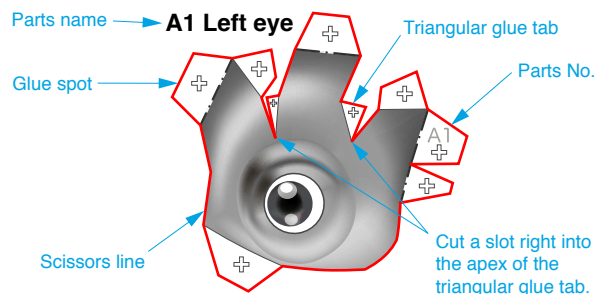
### <Caution>

- ✂ Keep scissors and glue away from small children.
- ✂ Be careful not to cut your fingers when using scissors.

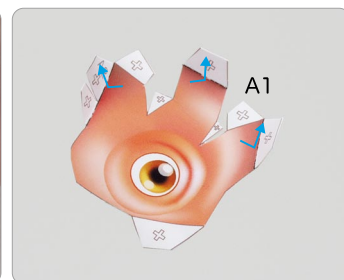
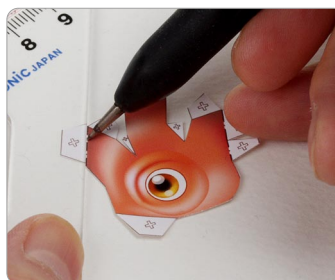
## A Assemble the head

Use pattern: Page2 to Page4.

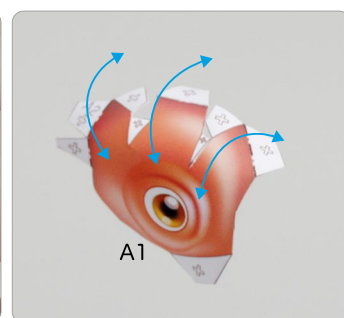
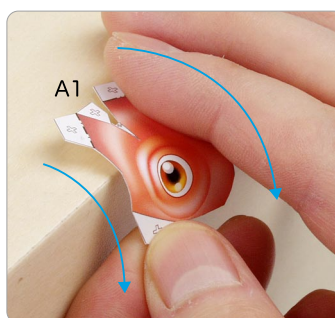
- ① Cut out A1 by cutting along the lines.
- ★ Cut along the line marked —.



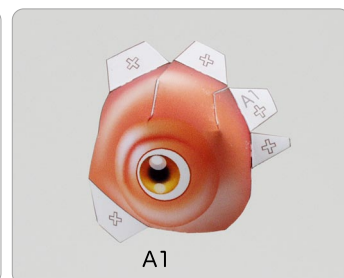
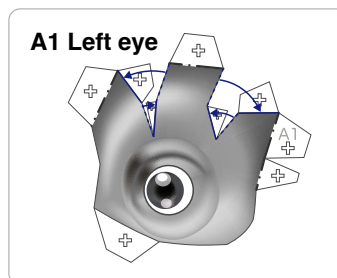
- ② Make a valley fold on A1.
- ★ Trace along the valley fold line with a stencil pen, scoring it to make it easier to fold.



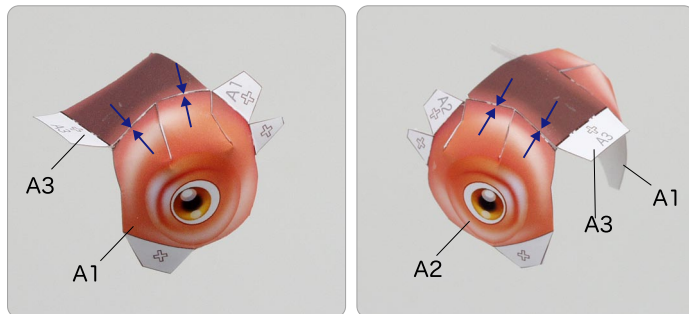
- ③ The parts will be easier to assemble if curled.
- ★ Using the photo as a guide, move your fingers in the direction of the arrow, adjusting the pressure to curl the paper.



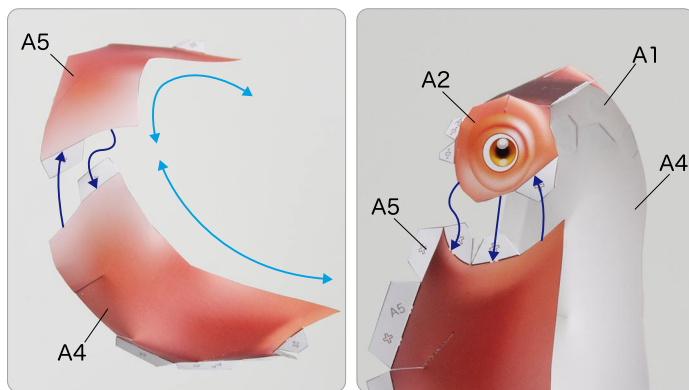
- ④ Add a slight curl to A1 when attaching it.
- ★ Attach the triangular glue tabs so that the front side becomes convex.
- ★ Using the photo as a guide, attach in the direction of the arrow.



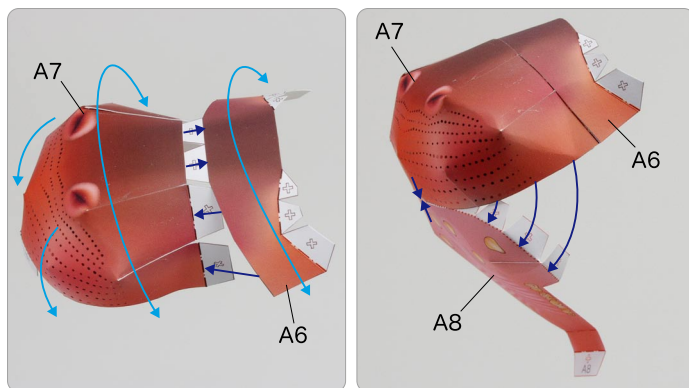
⑤ Attach A1 and A2 to A3.



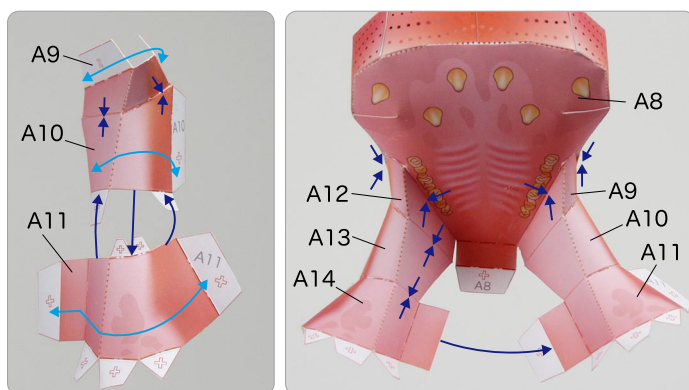
⑥ Assemble A4 and A5, and attach the eyes.



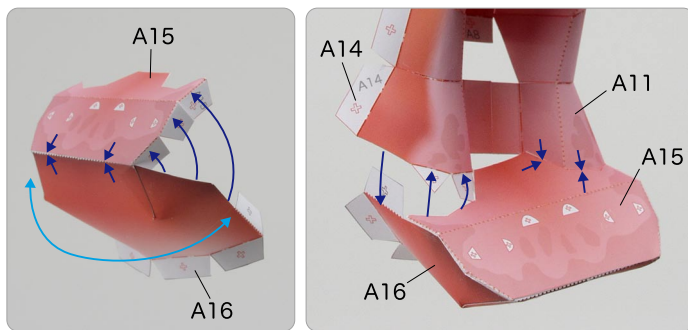
⑦ Attach A6 and A7 together, and attach A8.



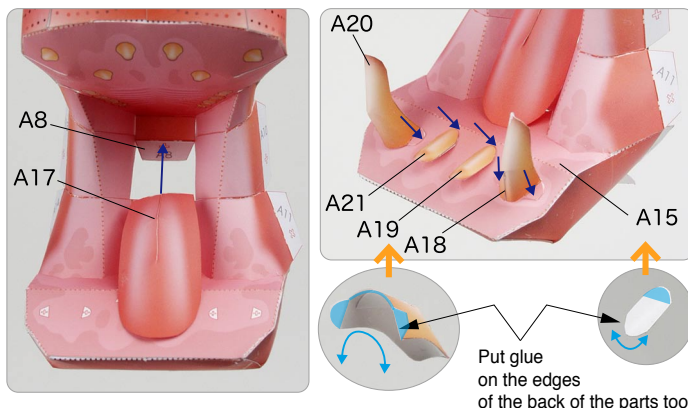
⑧ Assemble A9, A10 and A11. Assemble A12, A13 and A14 in the same way, and attach them to A8.



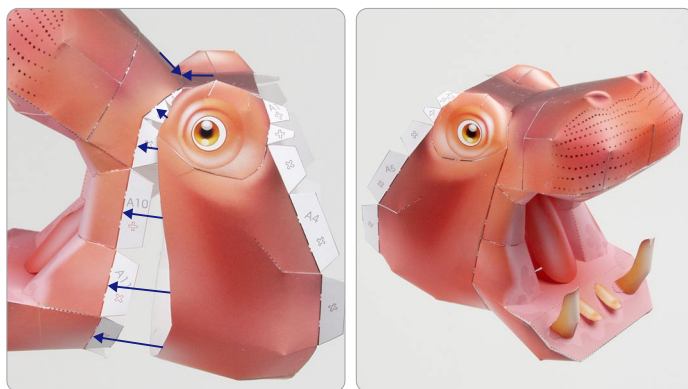
⑨ Assemble A15 and A16, and attach them to the assembled mouth.



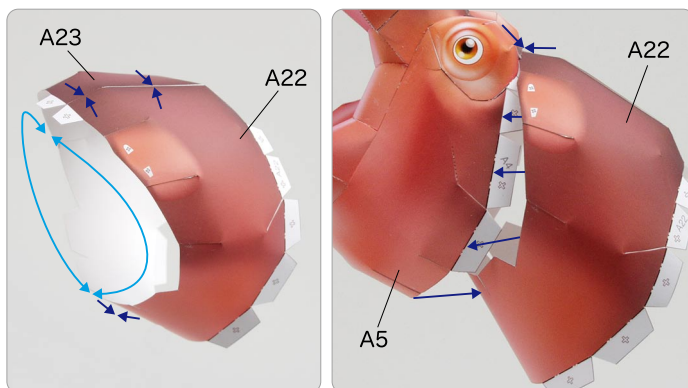
⑩ Attach A17 to A8, and attach the tusks.



⑪ Attach the eyes and mouth together.

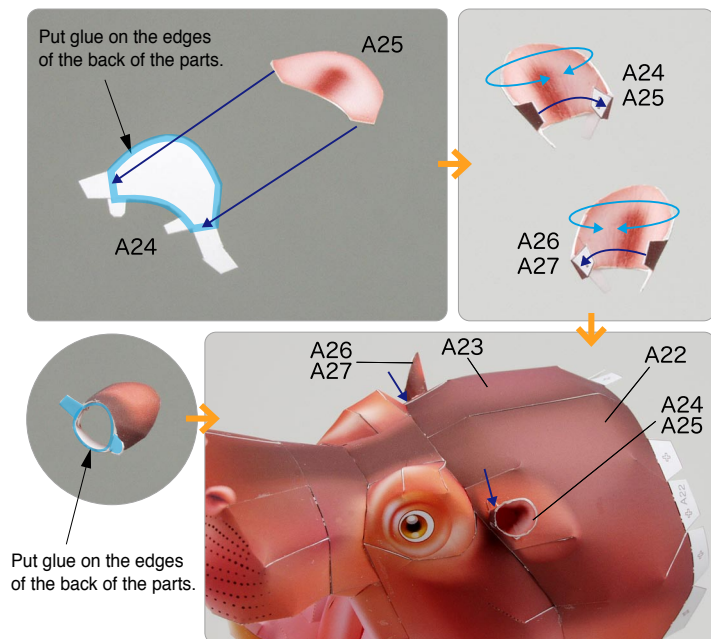


⑫ Assemble A22 and A23, and attach them to the head.





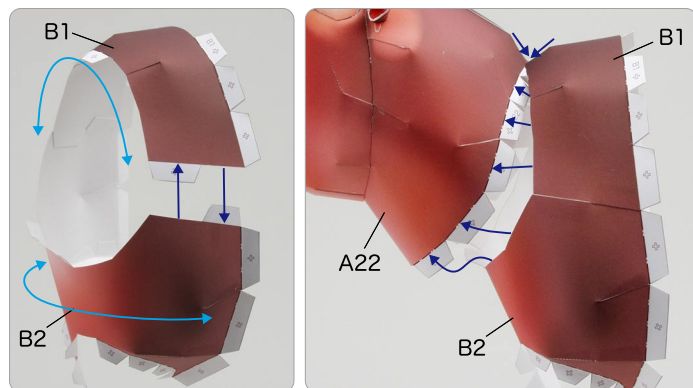
- ⑬ Glue and assemble A24 and A25. Assemble A26 and A27 in the same way, attach them to the head, and the head is complete.



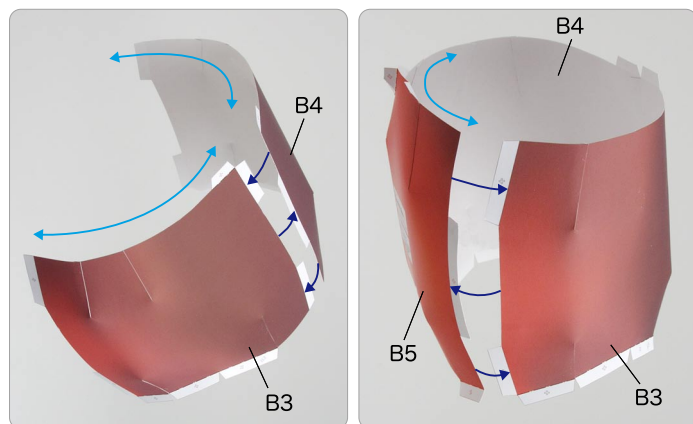
## **B** Assemble the body

Use pattern: Page5 to Page9.

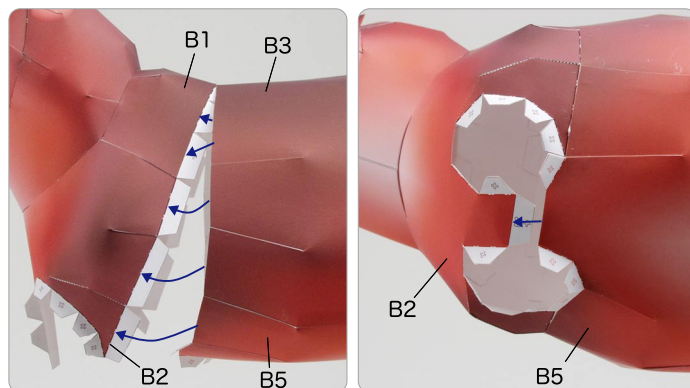
- ① Assemble B1 and B2, attach them to the neck.



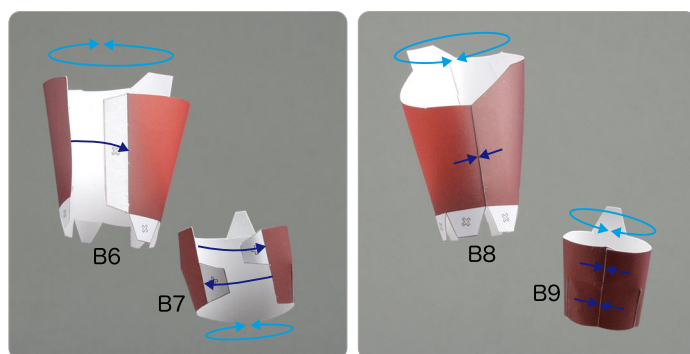
- ② Attach B3 and B4 together, and attach B5.



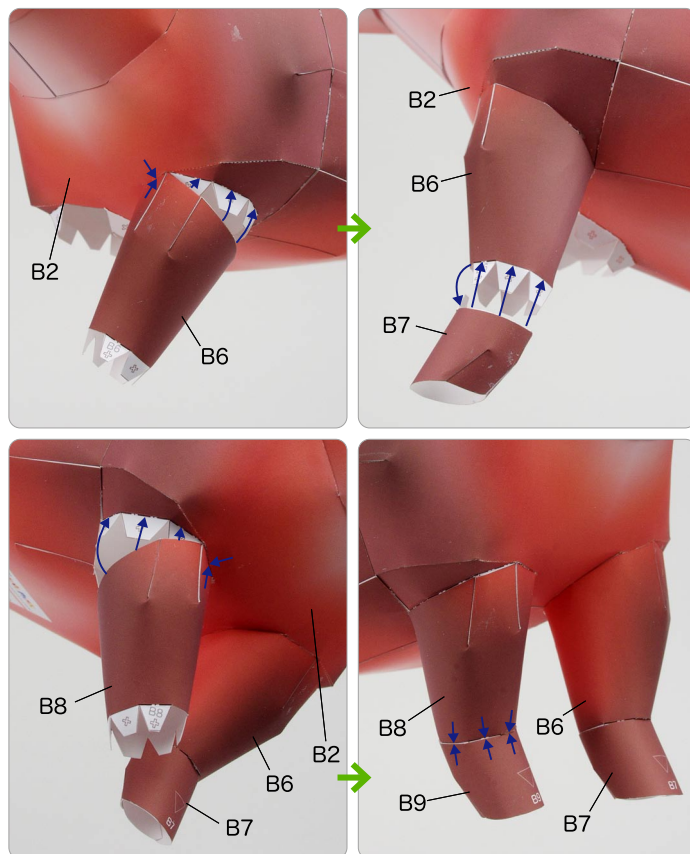
- ③ Attach B1 and B2 to the body.



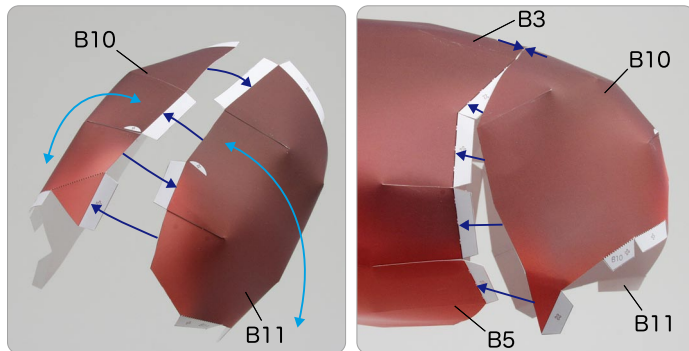
- ④ Assemble B6, B7, and B8, B9.



- ⑤ Attach B6, B7 and B8 ,B9 to the body in order.

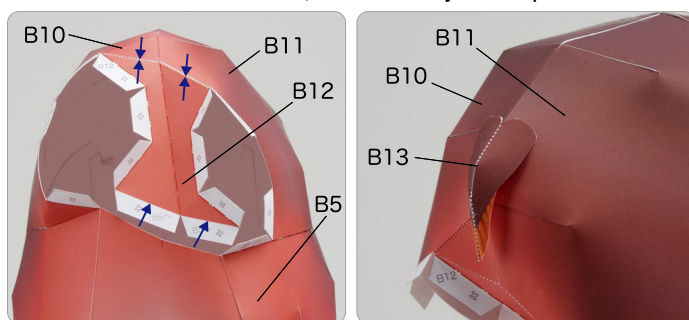


⑥ Assemble B10 and B11, paste them to the body.

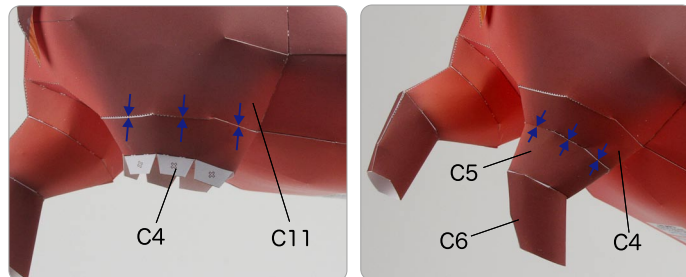


⑦ Attach B12 to the body.

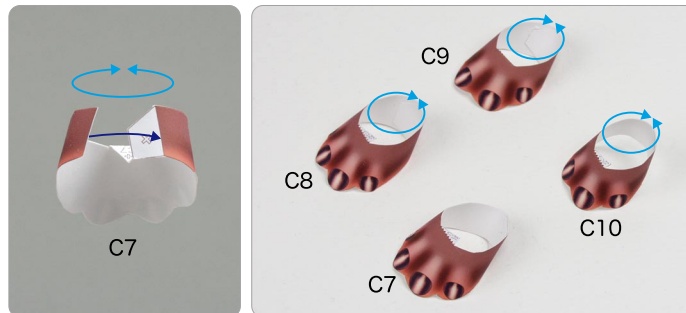
Glue B13 to B10 and B11, and the body is complete.



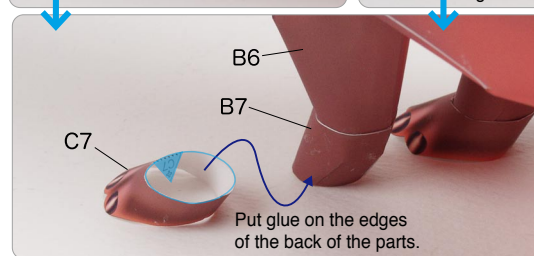
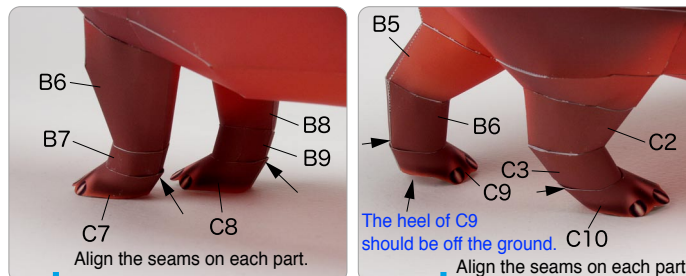
③ In the same way, attach C4, C5 and C6 to the body in order.



④ Assemble parts C7 and C8, C9, C10.



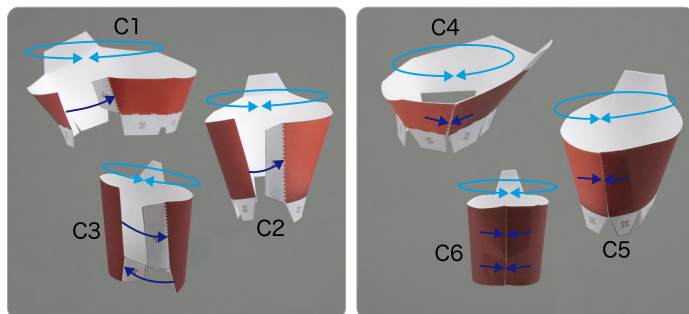
⑤ Without adding glue, fit the feet to the legs so that they stand on the ground. Next, attach them in parts order, and your hippopotamus is complete!



## **C Assemble the legs and body**

Use pattern: Page10.

① Assemble C1, C2, C3, and C4, C5, C6.



② Attach C1, C2 and C3 to the body in order.

