



Black Rhinoceros



- Mammalia Perissodactyla Rhinocerotidae
- Length (incl. tail): approx. 3 to 3.5m(approx. 9.8 to 11.5 feet)
- Weight: approx. 800 to 1350kg (approx. 1763.7 to 2976.2 lbs)
- Habitat: East and South Africa

The rhinoceros' best-known feature is its horn, and it is the largest land animal after the elephant. It has a big, robust body with a large head, short neck, broad chest, thick skin, and short legs. Each foot has three toes, meaning that a rhinoceros' footprints look like clovers. The rhinoceros has no incisors or canines, and its mouth is pointed to allow it to munch on leaves, twigs, and fruit it pulls from trees with its upper lip. The horn is a common target for poachers, meaning that the rhinoceros is currently in danger of extinction.



Tools

Scissors
Paste, or woodwork glue
Stencil pen, or bodkin
Ruler

Notation Key

——— Scissors line
..... Mountain fold
- - - - - Valley fold
+ Glue spot
A1, B1 Parts No.

- ◆ The Pattern is divided into three blocks:
A (head), B (body), and C (legs).
Follow the instructions for each block to assemble your black rhinoceros.

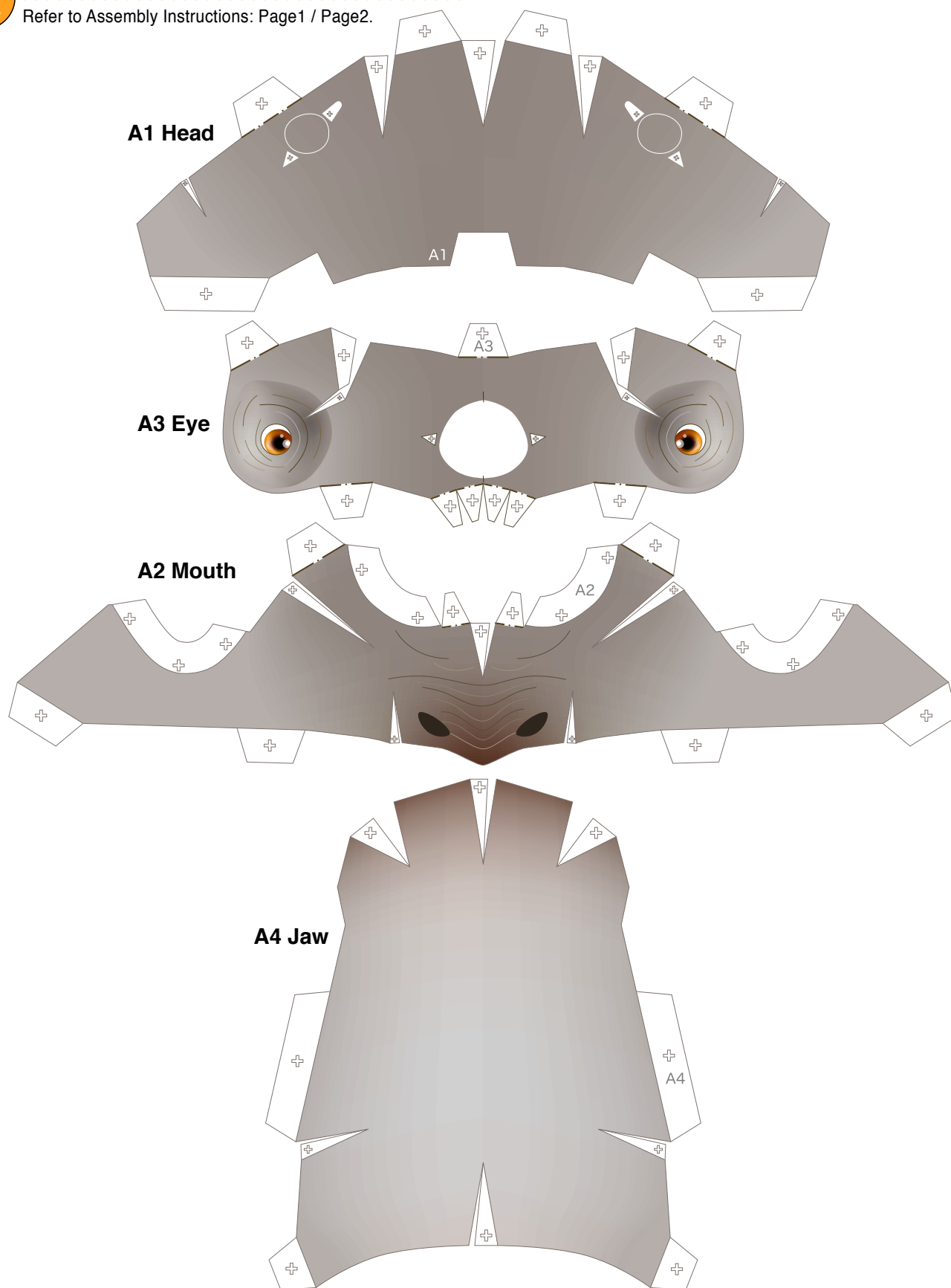
<Caution>

- ✂ Keep scissors and glue away from small children.
- ✂ Be careful not to cut your fingers when using scissors.



Head parts

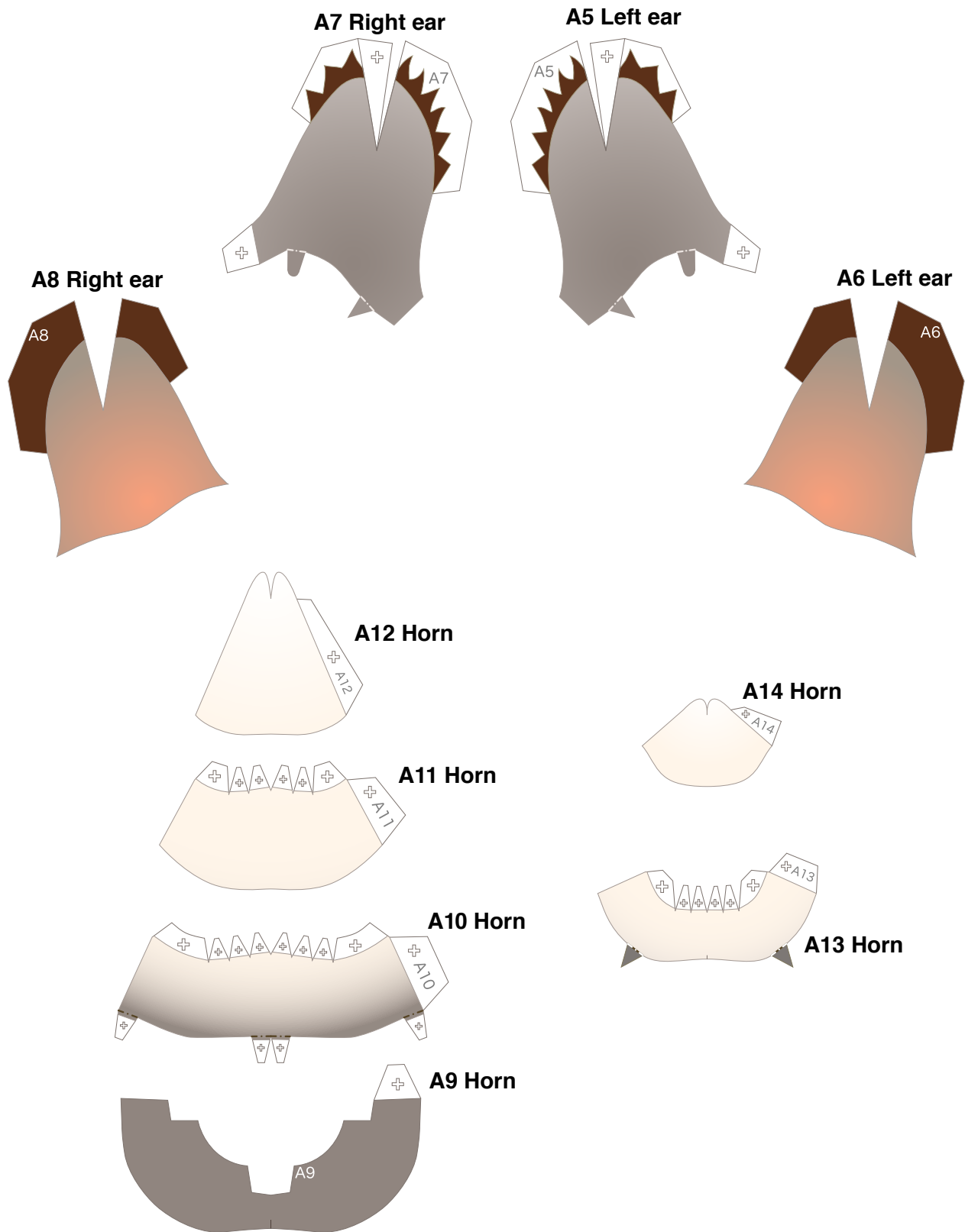
Refer to Assembly Instructions: Page1 / Page2.





Head parts

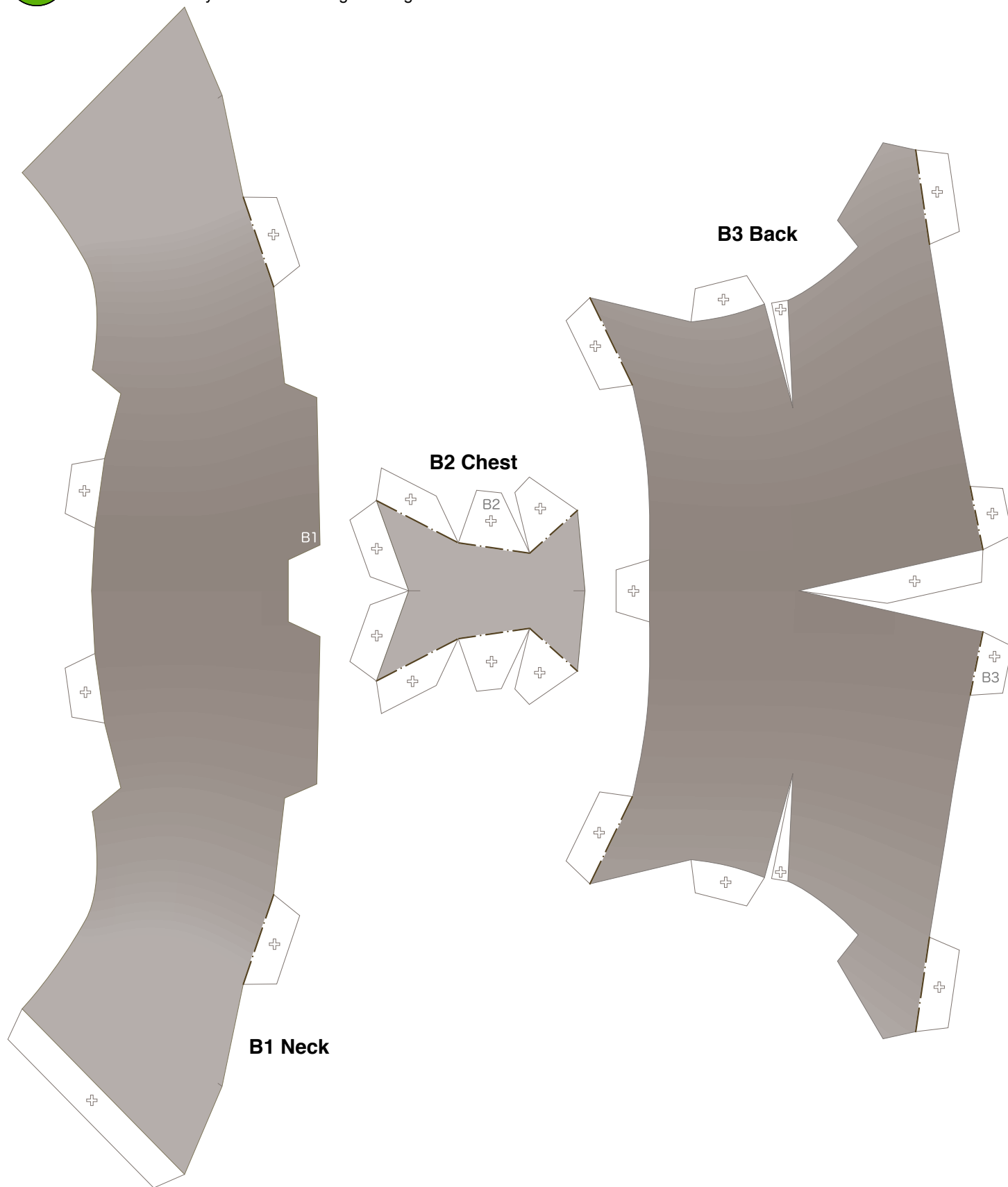
Refer to Assembly Instructions: Page2.





Body parts

Refer to Assembly Instructions: Page2 / Page3.



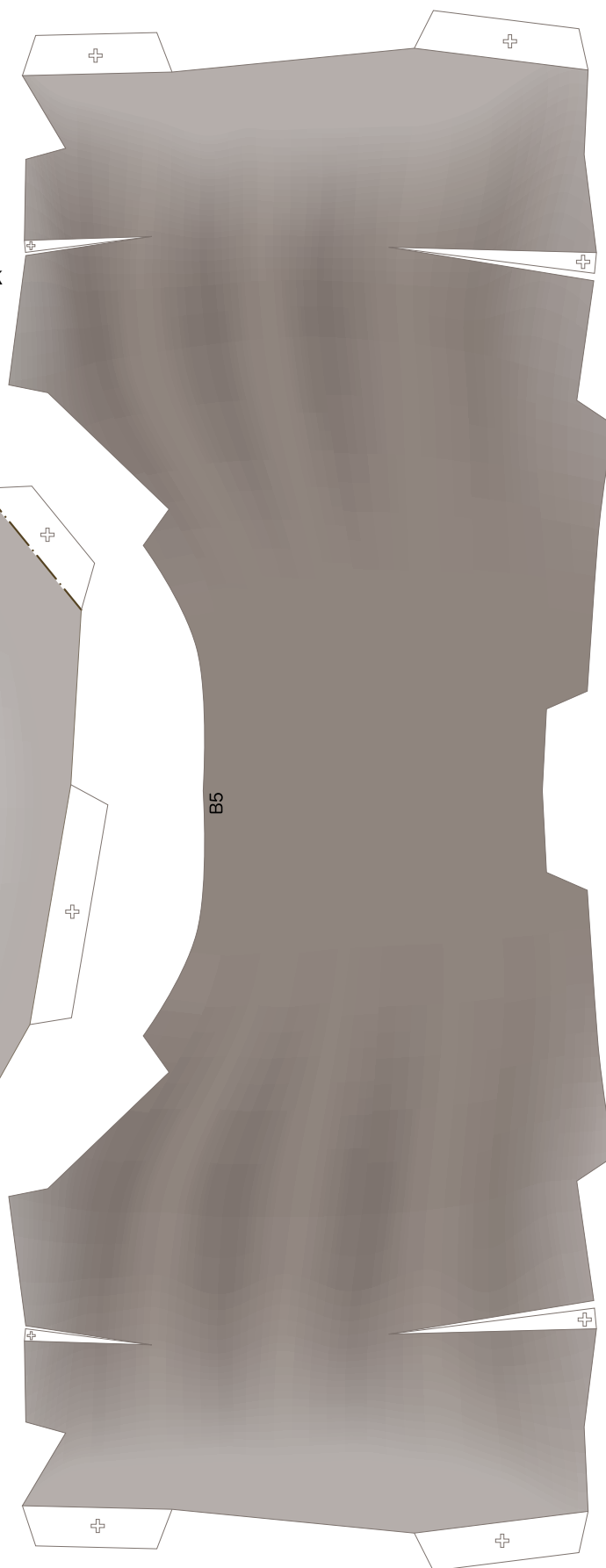
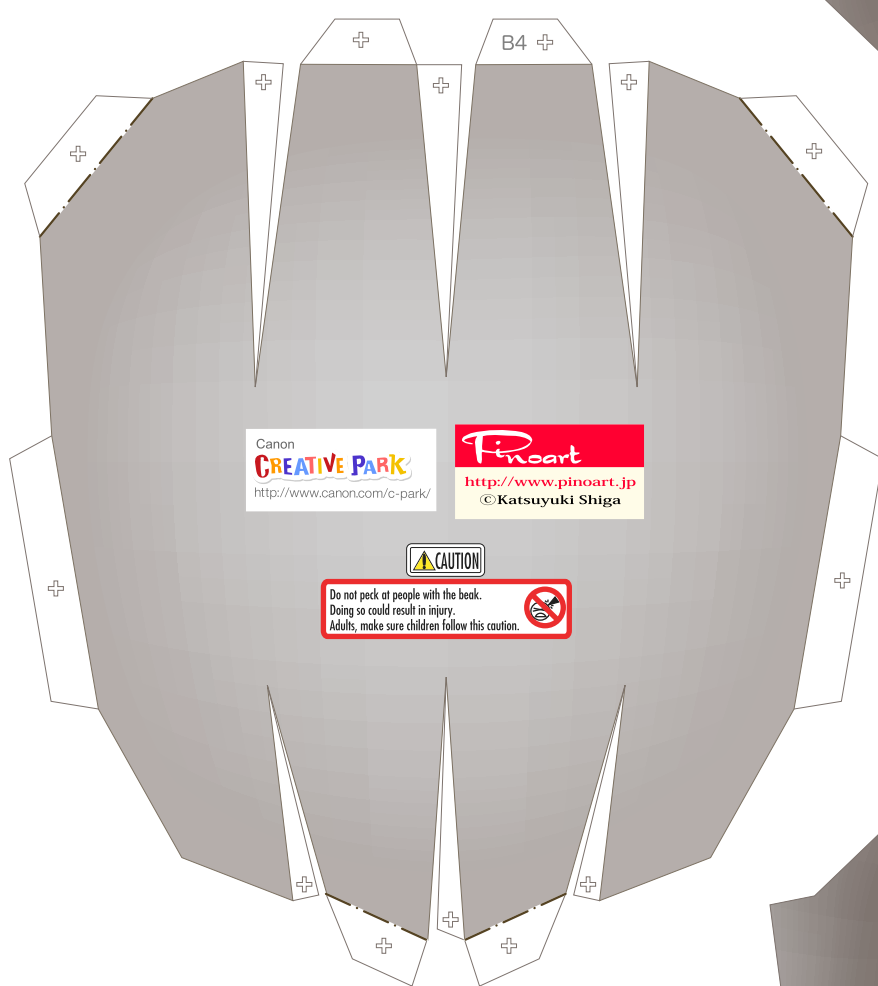


Body parts

Refer to Assembly Instructions: Page3.

B5 Back

B4 Belly

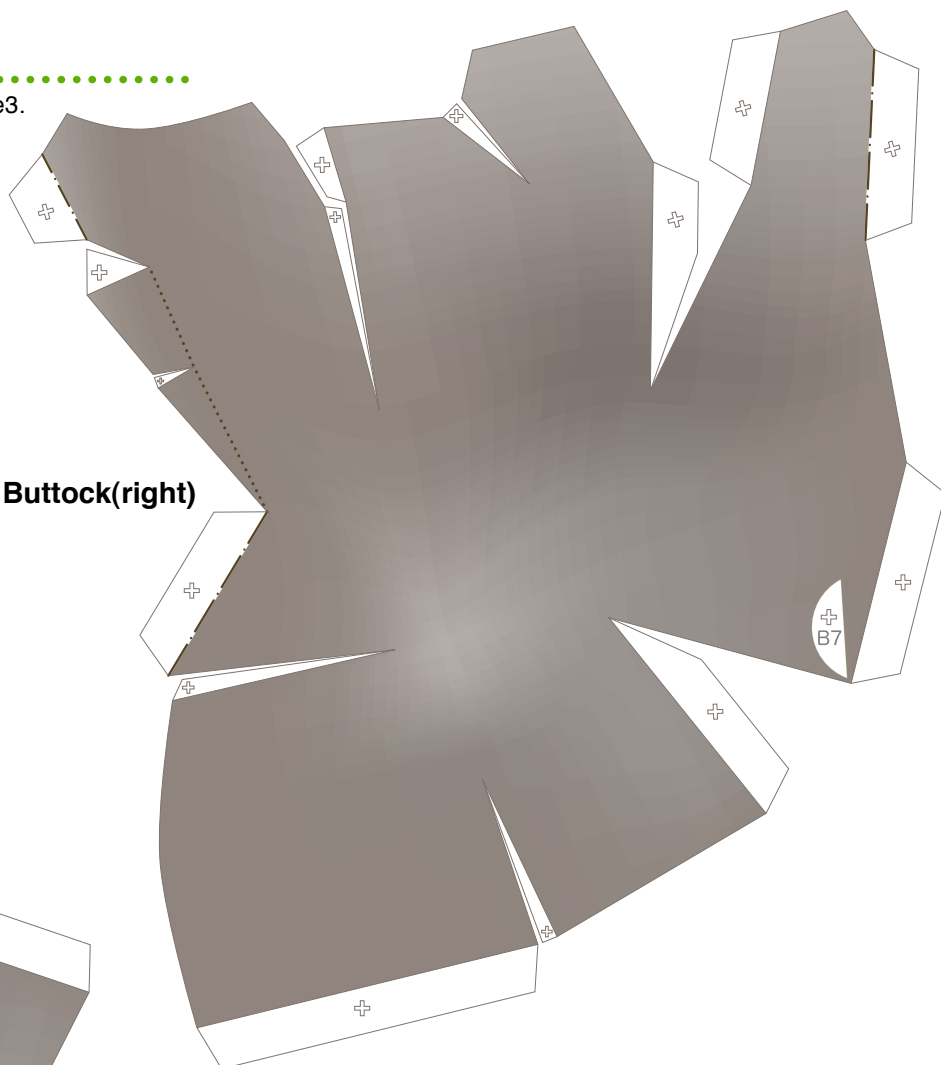




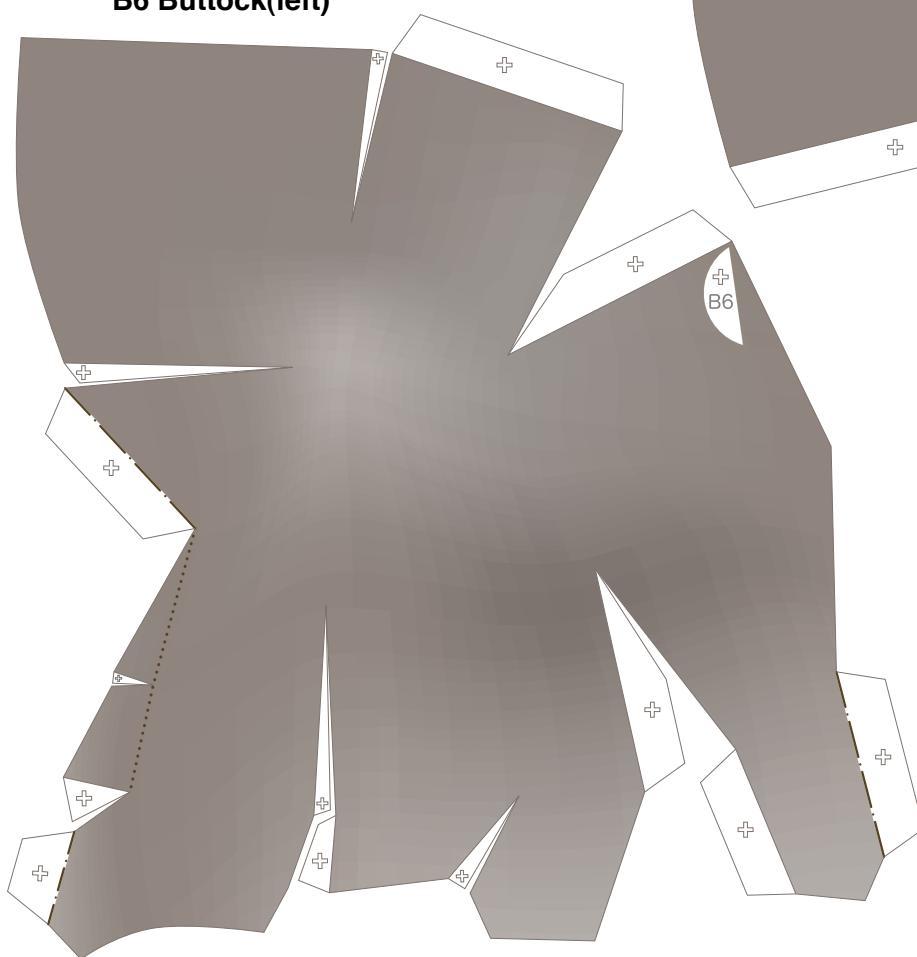
Body parts

Refer to Assembly Instructions: Page3.

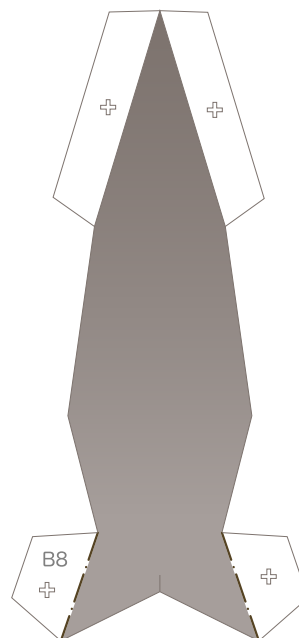
B7 Buttock(right)



B6 Buttock(left)



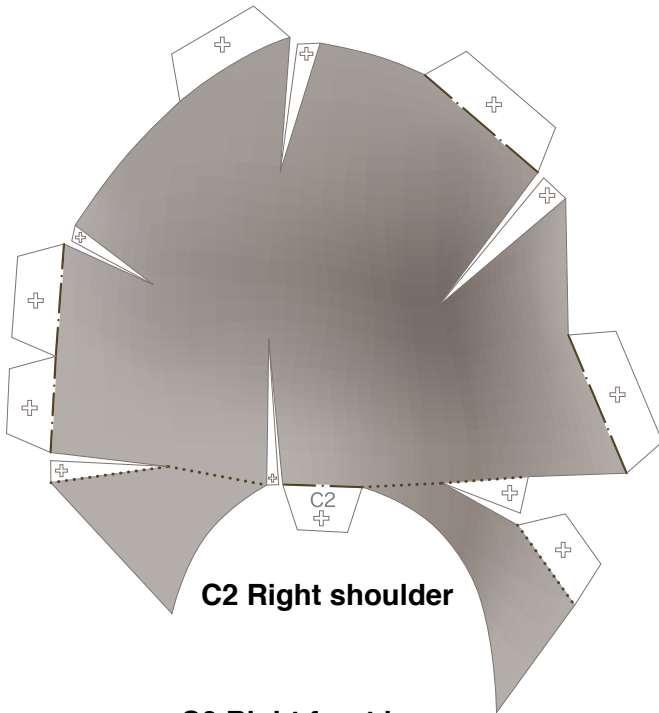
B8 Buttock



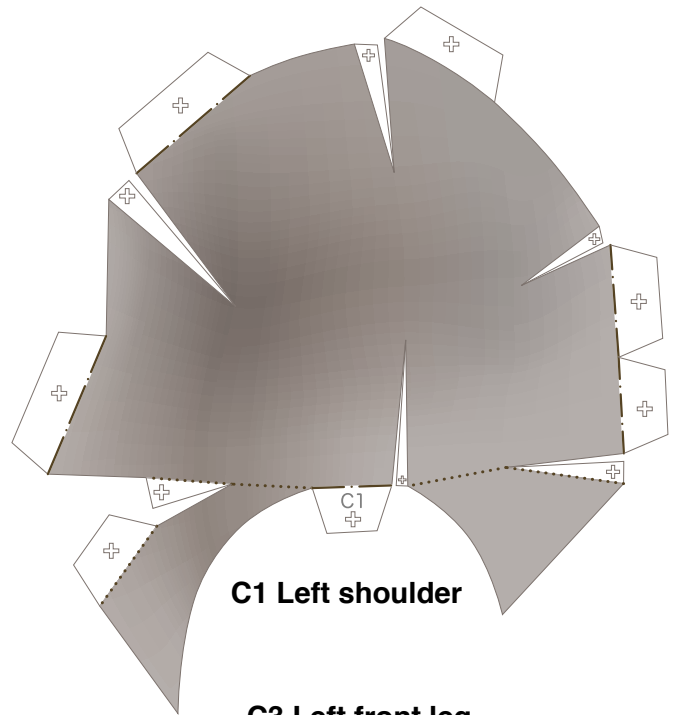


Leg parts

Refer to Assembly Instructions: Page3 / Page4.

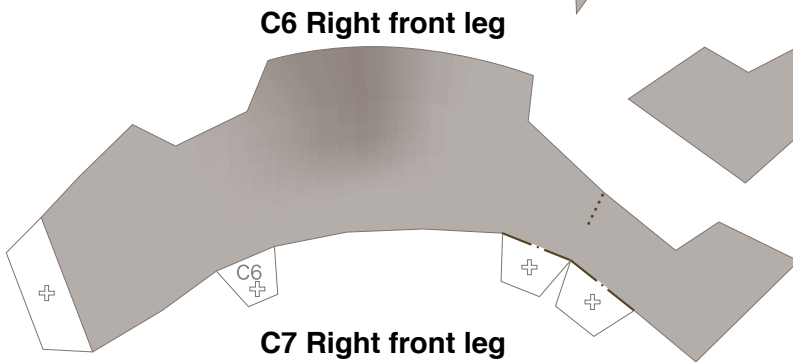
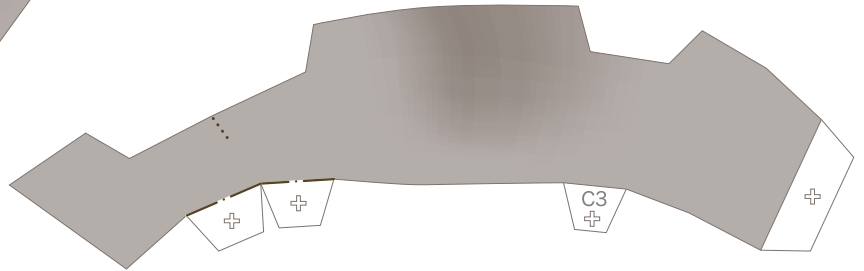


C2 Right shoulder



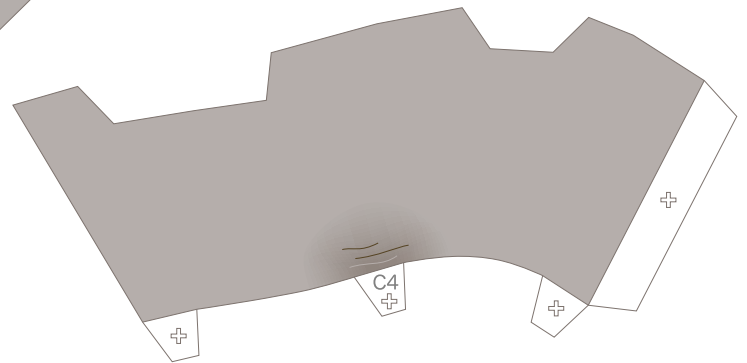
C1 Left shoulder

C3 Left front leg



C6 Right front leg

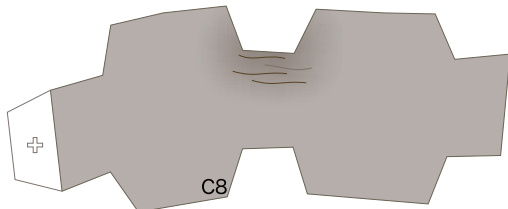
C4 Left front leg



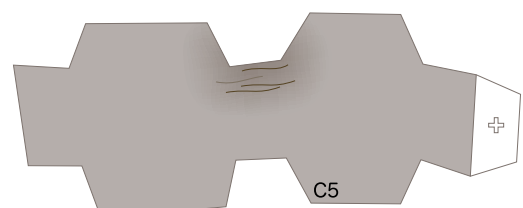
C7 Right front leg



C8 Right front leg



C5 Left front leg

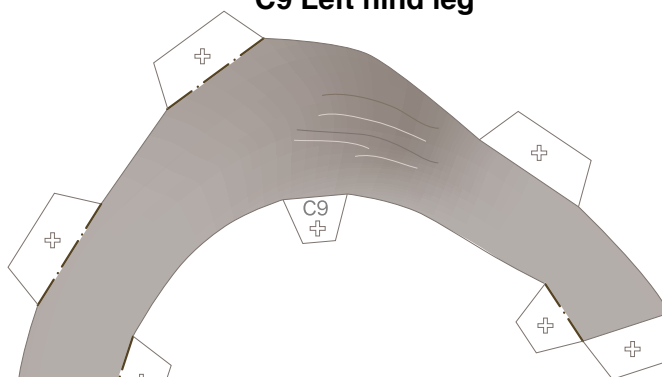




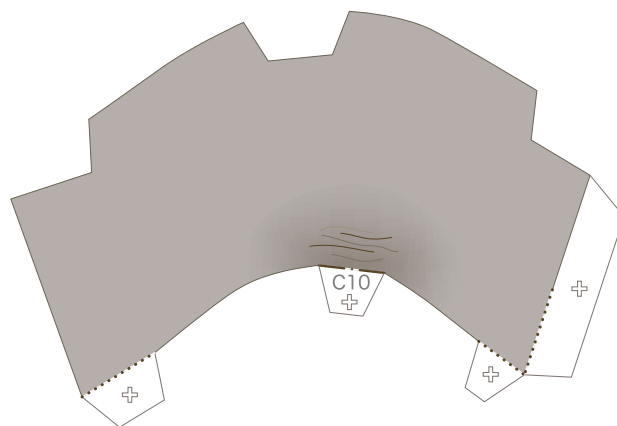
Leg parts

Refer to Assembly Instructions: Page4.

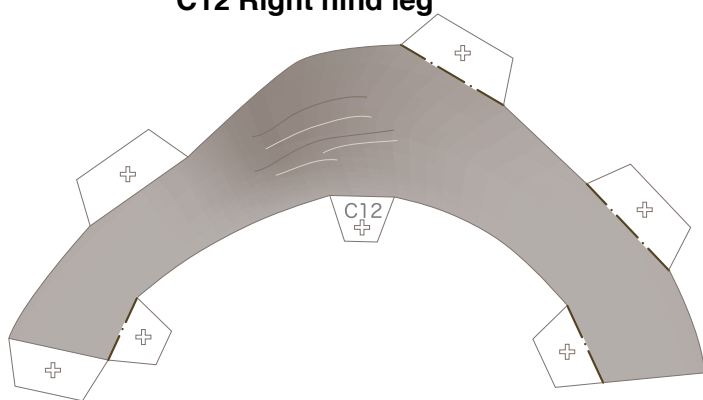
C9 Left hind leg



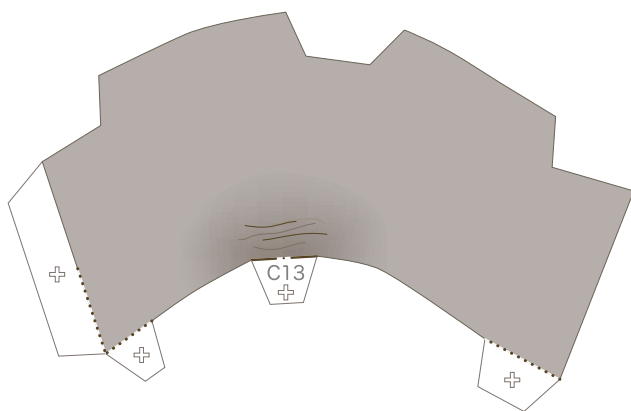
C10 Left hind leg



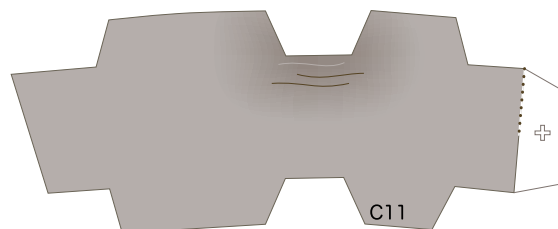
C12 Right hind leg



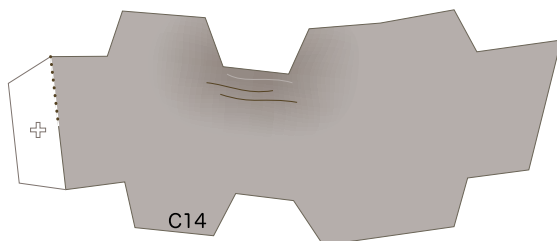
C13 Right hind leg



C11 Left hind leg



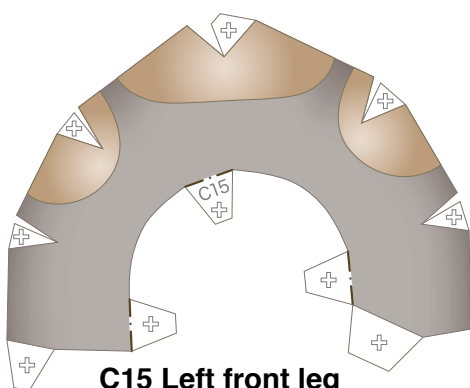
C14 Right hind leg



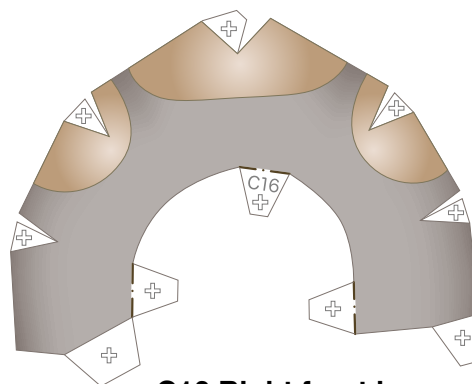


Leg parts

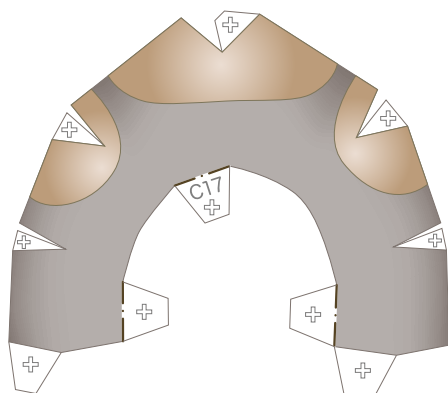
Refer to Assembly Instructions: Page4.



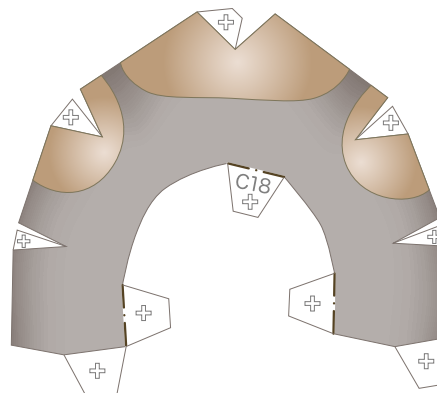
C15 Left front leg



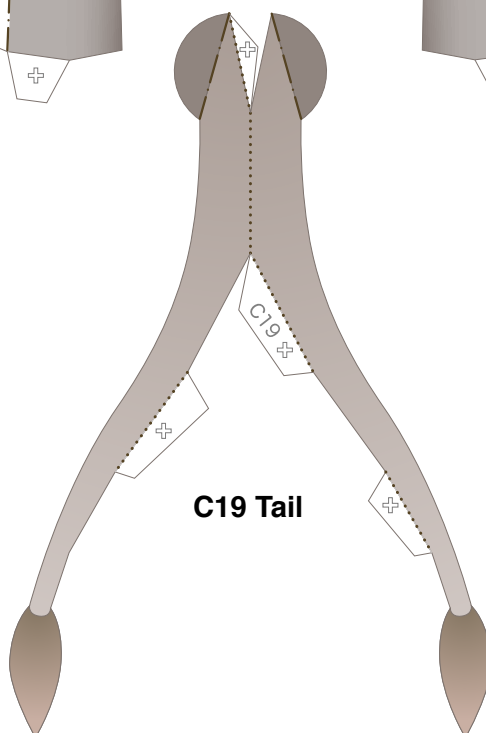
C16 Right front leg



C17 Left hind leg



C18 Right hind leg



C19 Tail