

# Chipmunk

Chipmunk is the name for animals belonging to the Sciuridae family of the Rodentia order. A chipmunk's body features a long, fluffy tail and a vertical striped coat, and they are well known for the way they store food inside their cheeks. There are several types of chipmunk within the Tamias genus, and most of them are found in North American. They are omnivorous and feed on grains, mushrooms, and insects. Many types of chipmunk spend autumn gathering food to store in their homes for the winter, spending the cold months inside their nests until spring.



● Front



● Side



● Back



\*Assembly instructions on pages 1 and 2, and pattern on page 3.

## ★ Assembly Instructions

- 1) Carefully cut out the parts.
- 2) Fold along the dotted lines, making mountain or valley folds as indicated.
- 3) Follow the order indicated in the instructional diagrams, and attach the parts to assemble.  
(Read the Explanation of Symbols for more information.)
- 4) Your paper craft model is finished!

## ★ Tools

Scissors, glue (We recommend craft glue.)

## ★ Caution

Keep scissors and glue away from small children.  
Be careful not to cut your fingers when using scissors.  
Fold the folding lines before gluing.

## ★ Explanation of Symbols



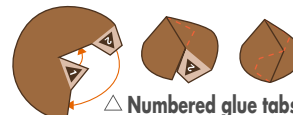
Cut line



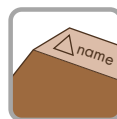
Mountain fold



Valley fold



△ **Numbered glue tabs**  
Glue the parts together in the order indicated by the numbers.

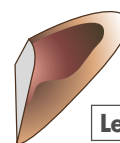
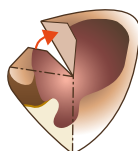


△ **Glue tabs with symbols and part names**  
These tabs are to be glued onto the matching parts, which name is indicated on the tab.



## 1

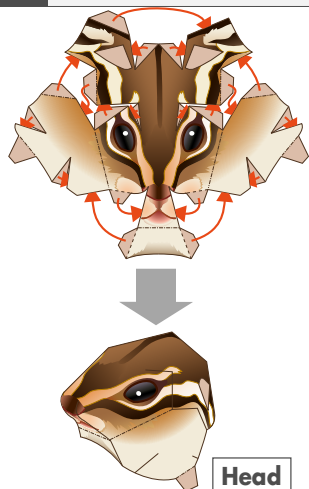
Fold in half and glue the reverse side together, then cut out.



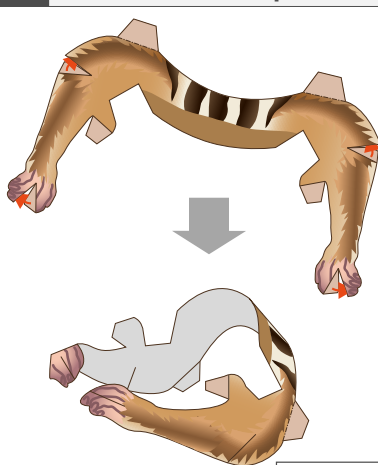
Left ear

Assemble the right ear in the same way.

## 2

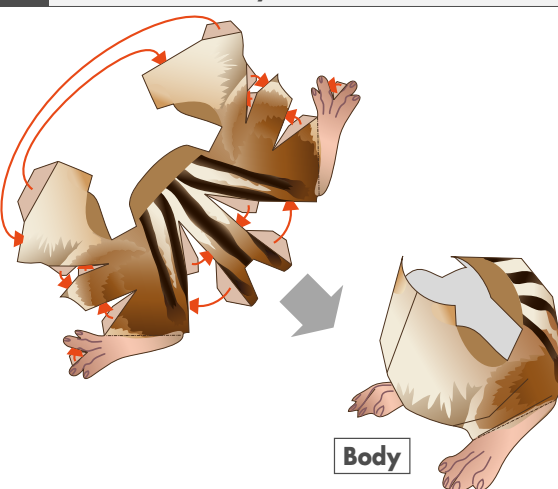
**Head**

## 3



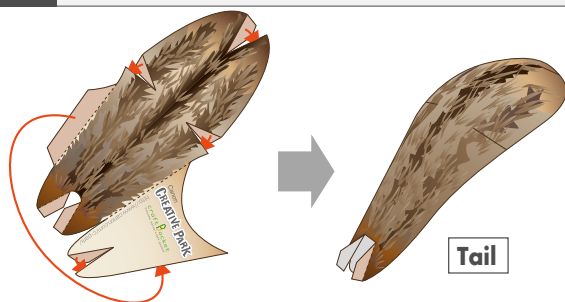
### Front paws

## 4



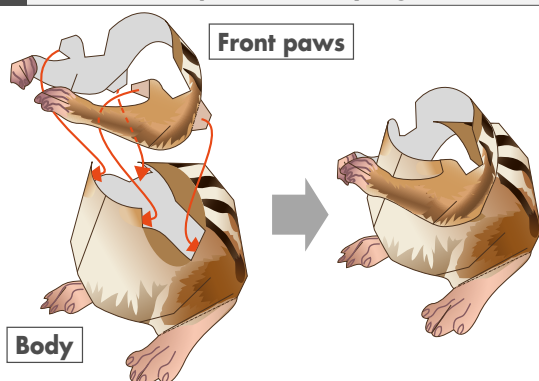
## Body

## 5



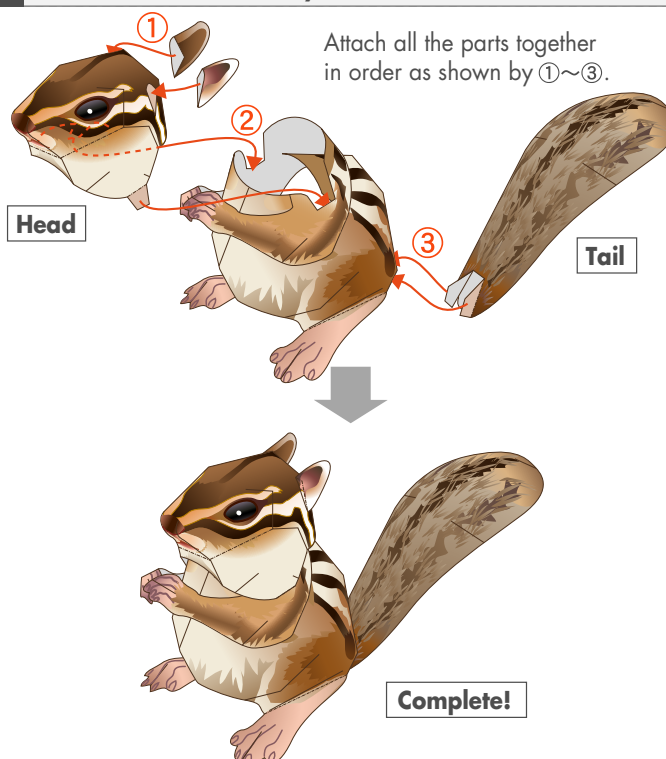
Tail

## 6



## Body

## 7



**Complete!**

Attach all the parts together  
in order as shown by ①~③.

