



## Whooper Swan

(*Cygnus cygnus*)

The whooper swan is a large type of waterfowl, whose adults reach lengths of up to 140cm, with wings as long as 60cm each. While their bodies are predominantly white, some feature yellowish markings on the head and neck. There are no color differences distinguishing males and females, but cygnets younger than one year old are gray with brownish streaks, the area around the top of the beak a pinkish white. Also, adults can weigh more than 10kg, which is quite heavy for a flying animal. Take-off requires the assistance of a run-up. Whooper swans feed mostly on the stems and roots of aquatic plants, and their main breeding ground is northern Eurasia, Iceland, etc.

This papercraft is about one half the size of a real whooper swan.

### Assembly Instructions

- 1) Carefully cut out the parts.
- 2) Make mountain folds and valley folds along the dotted lines, as indicated by the directions.
- 3) Assemble the parts in the order shown by the numbers on the glue tabs. (Read the assembly instruction for more information.)
- 4) Attach the parts in order. (Read the assembly instruction for more information.)
- 5) Your Paper craft model is finished.

### Tools

Scissors, glue (We recommend craft glue.)

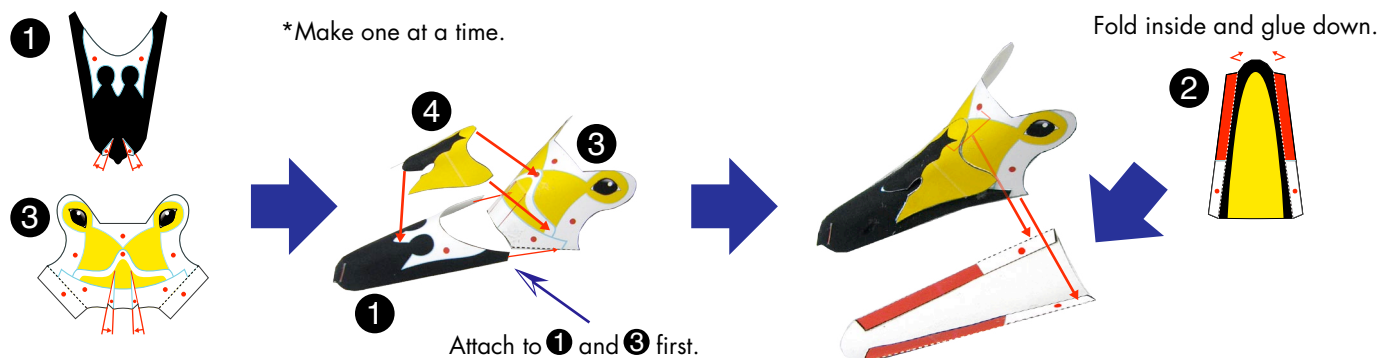
### Caution

Glue, scissors and other tools may be dangerous to young children so be sure to keep them out of the reach of young children.

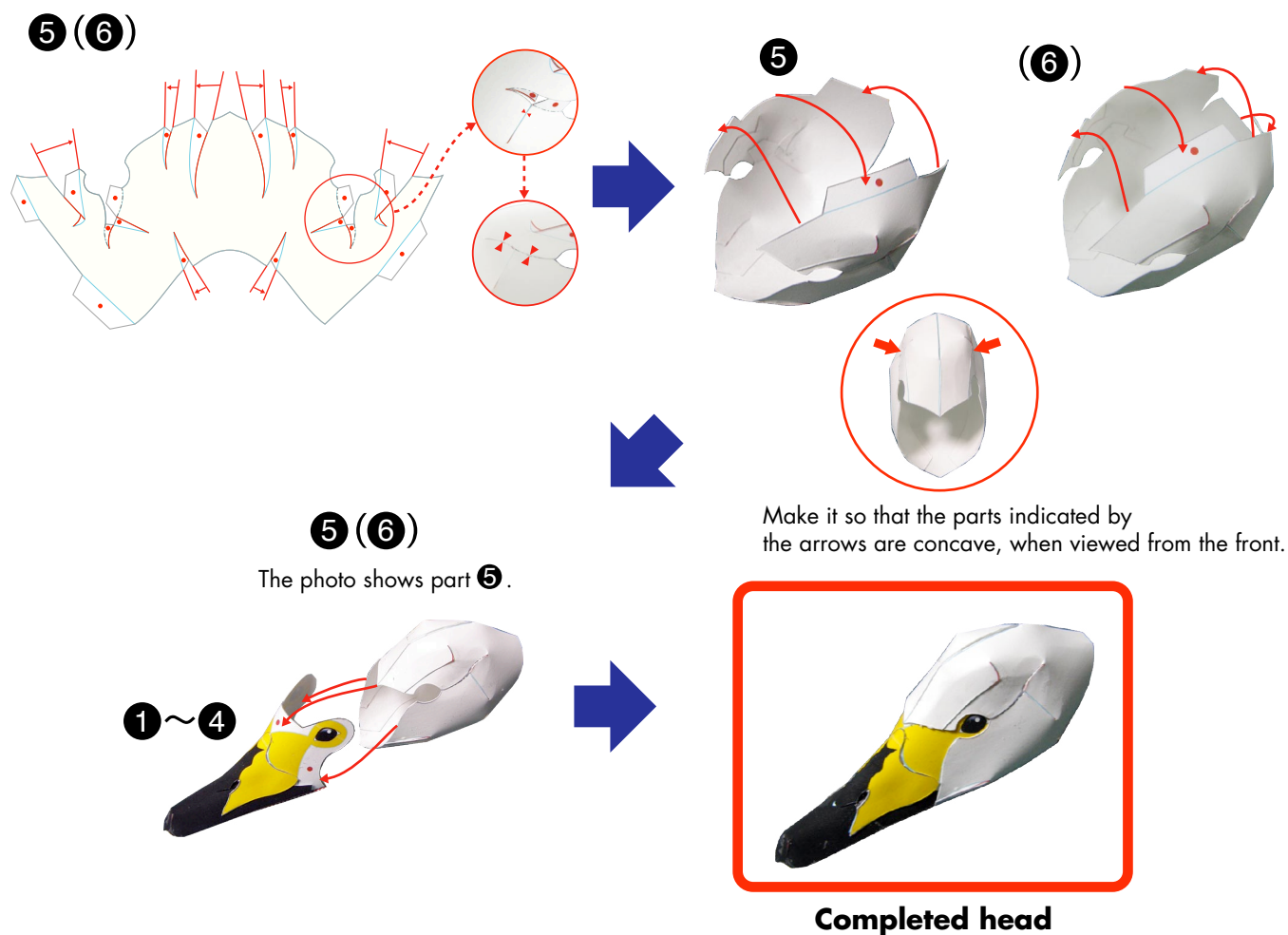
### Notation Key

	—————	Scissors line
	—————	Cut in line
	—————	Glue up to this line
	-----	Mountain fold
	-----	Valley fold
	●	Glue spot

### Assemble ①, ②, ③ and ④.

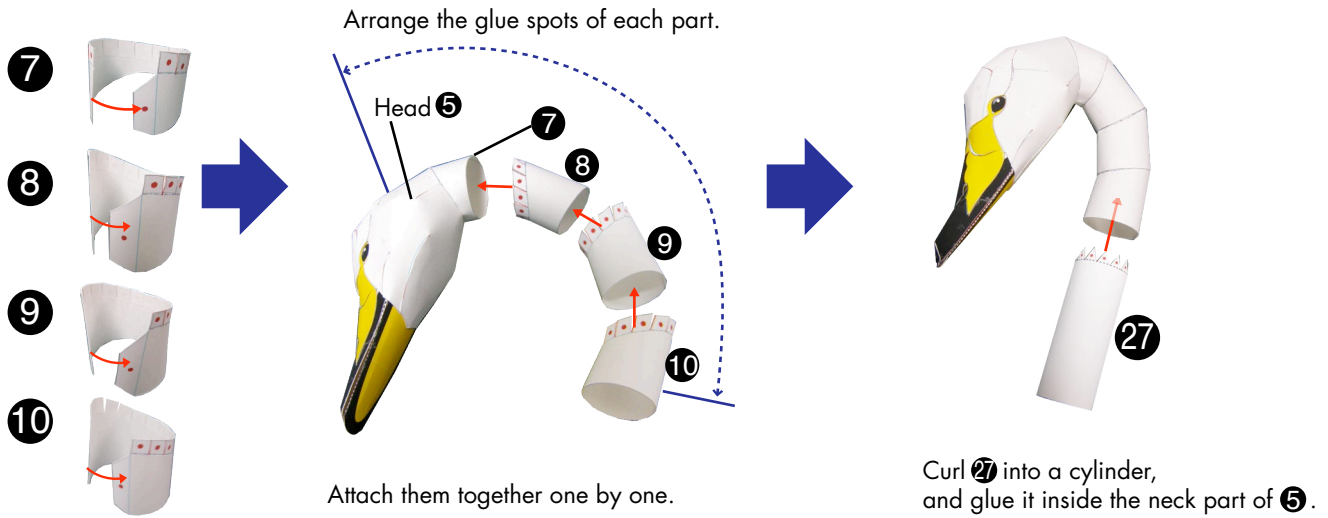


### Assemble ⑤ (⑥) , and attach them to the face ①, ②, ③ and ④.

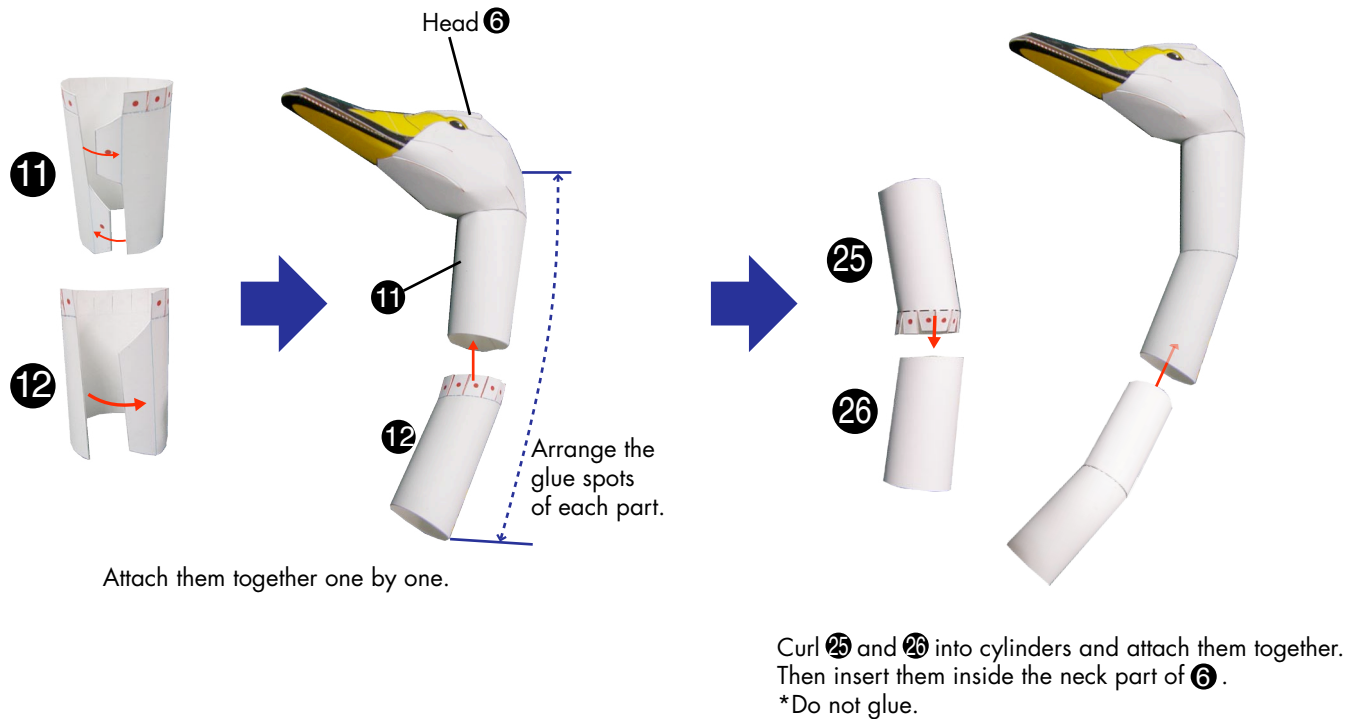


### <Assemble either of the necks.>

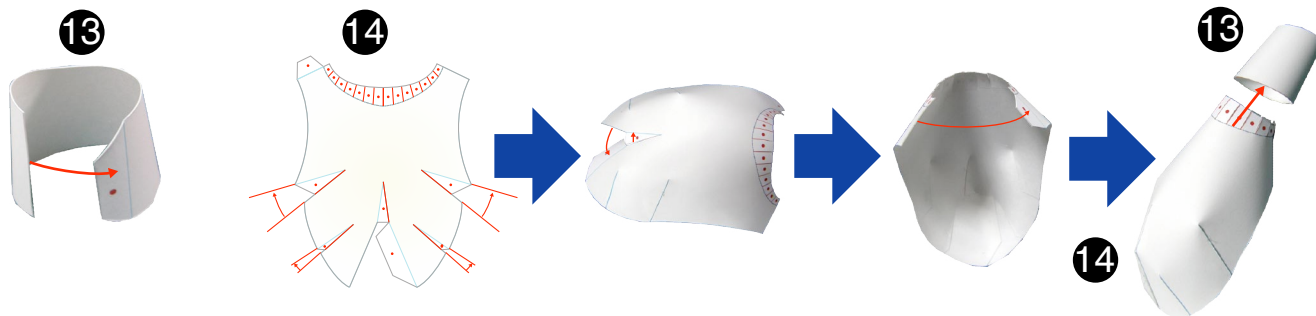
#### Assemble ⑦, ⑧, ⑨, ⑩ and ⑳.



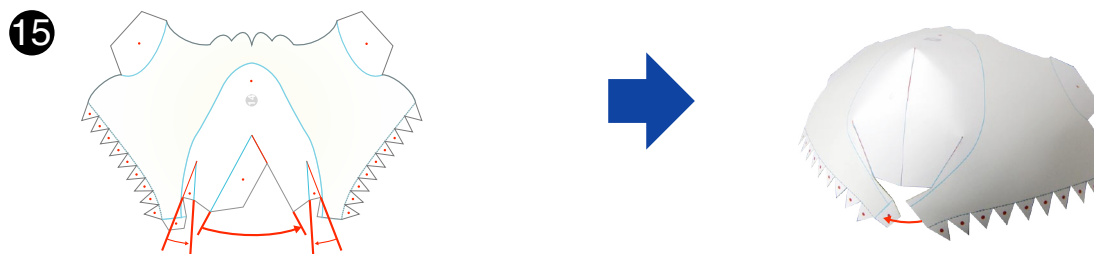
#### Assemble ⑪, ⑫, ㉕ and ㉖.



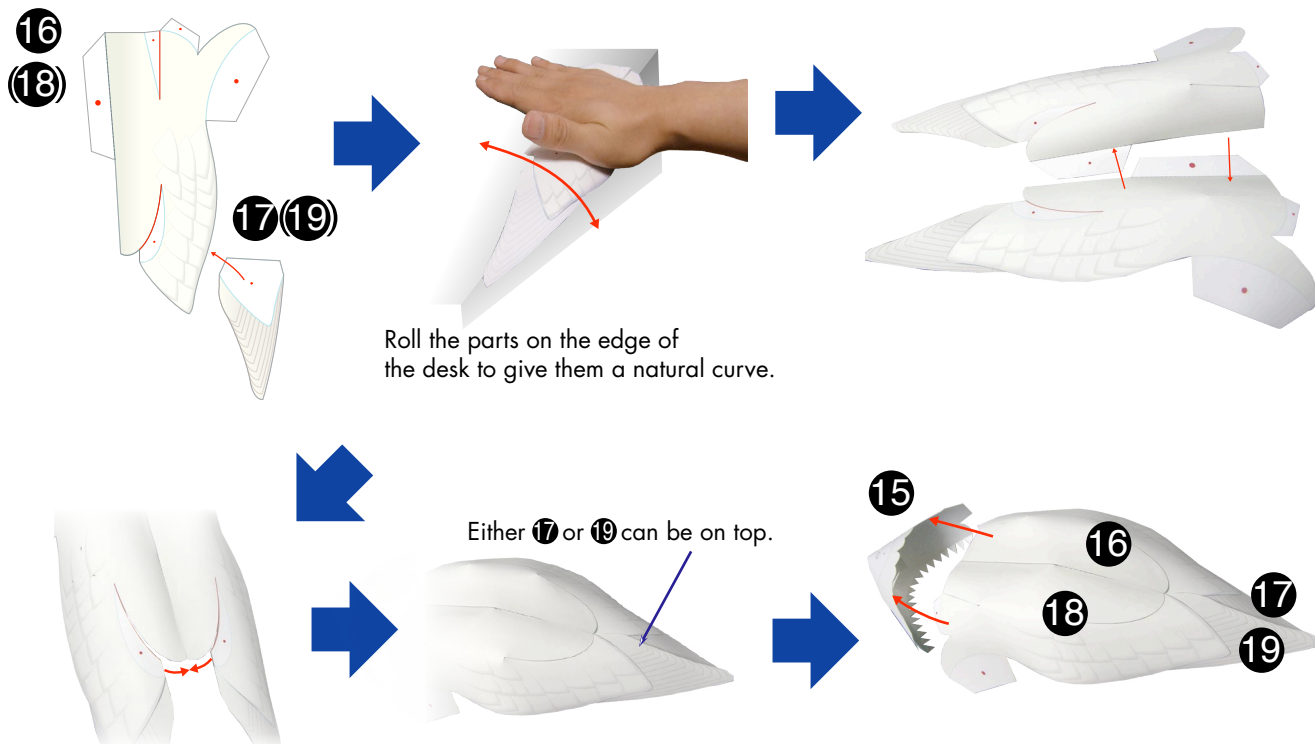
### Assemble 13 and 14, and make the neck joint.



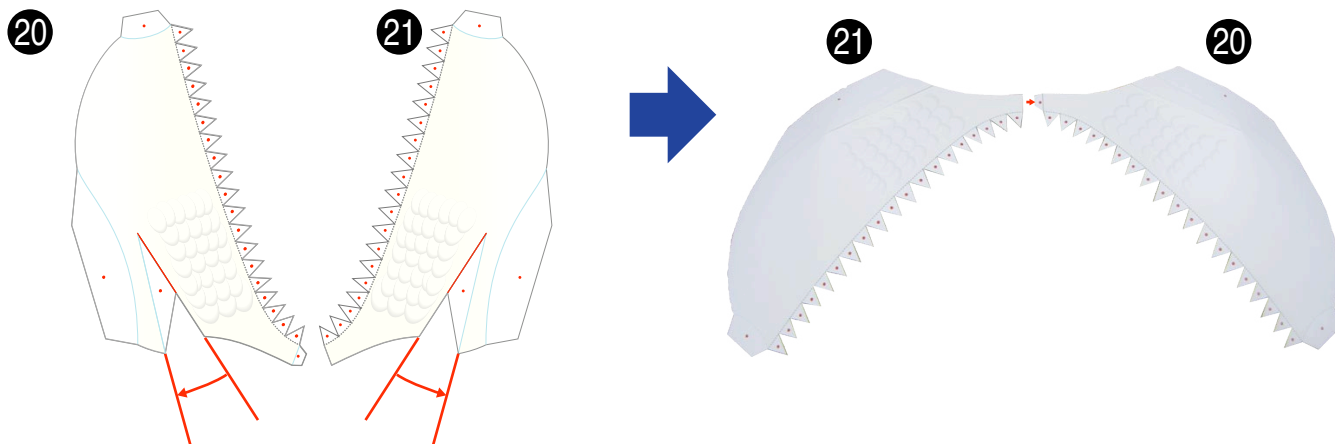
### Assemble 15, and make the front part of the body.



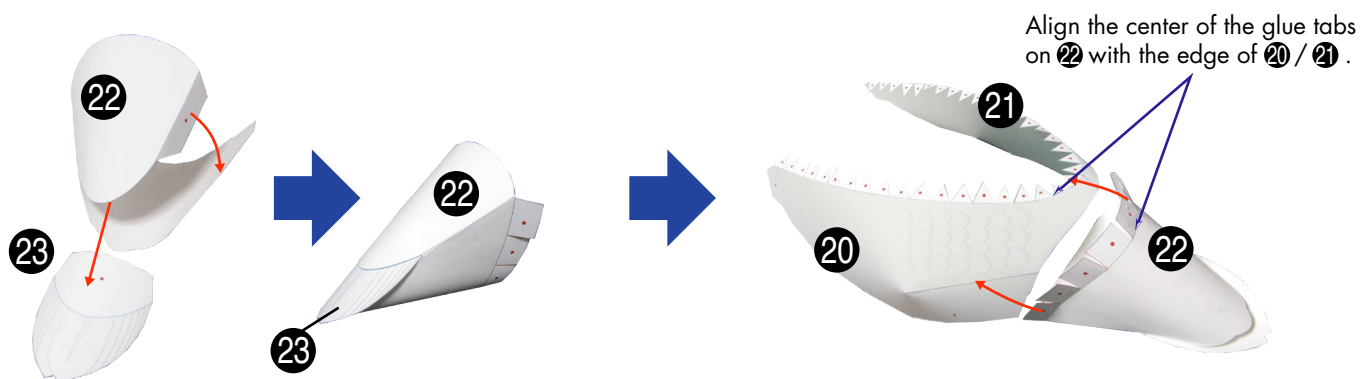
### Attach 16 and 17, 18 and 19, add curves to the part, and attach to 15.



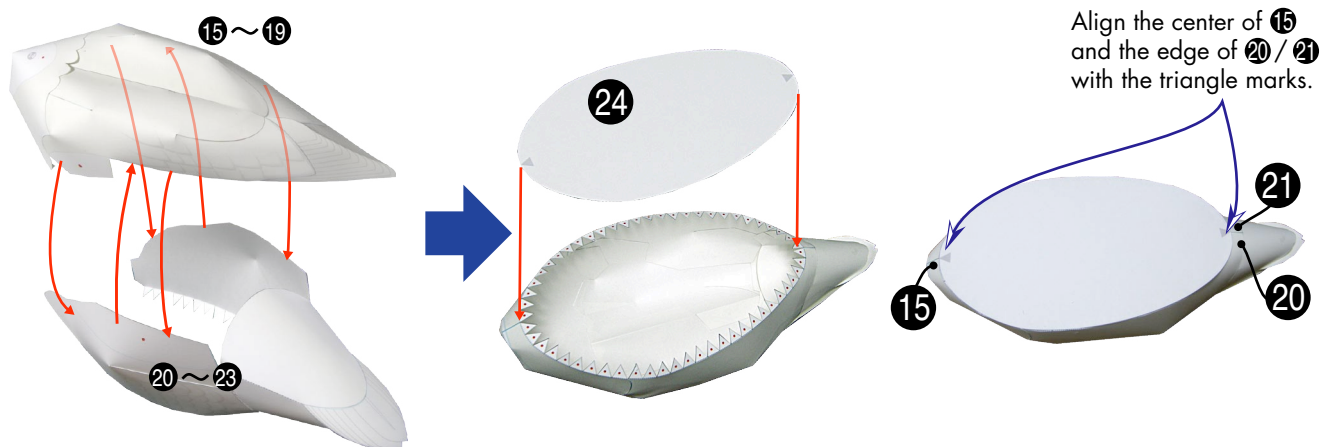
### Assemble ⑳ and ㉑, and attach them together.



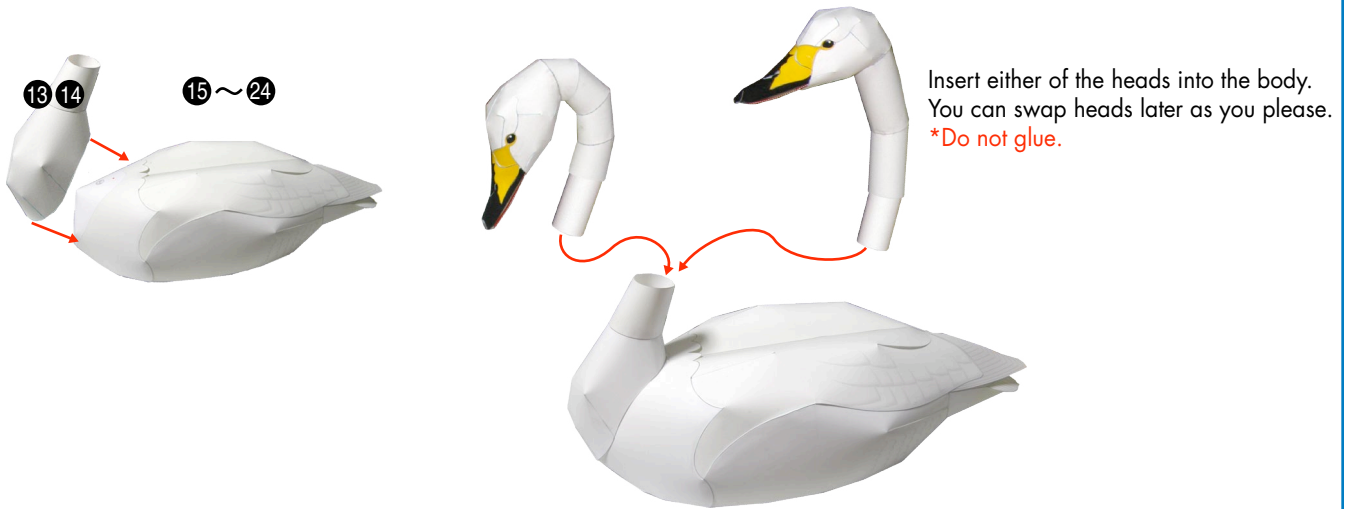
### Assemble ㉒ and ㉓, and attach them to ㉑ and ㉒.



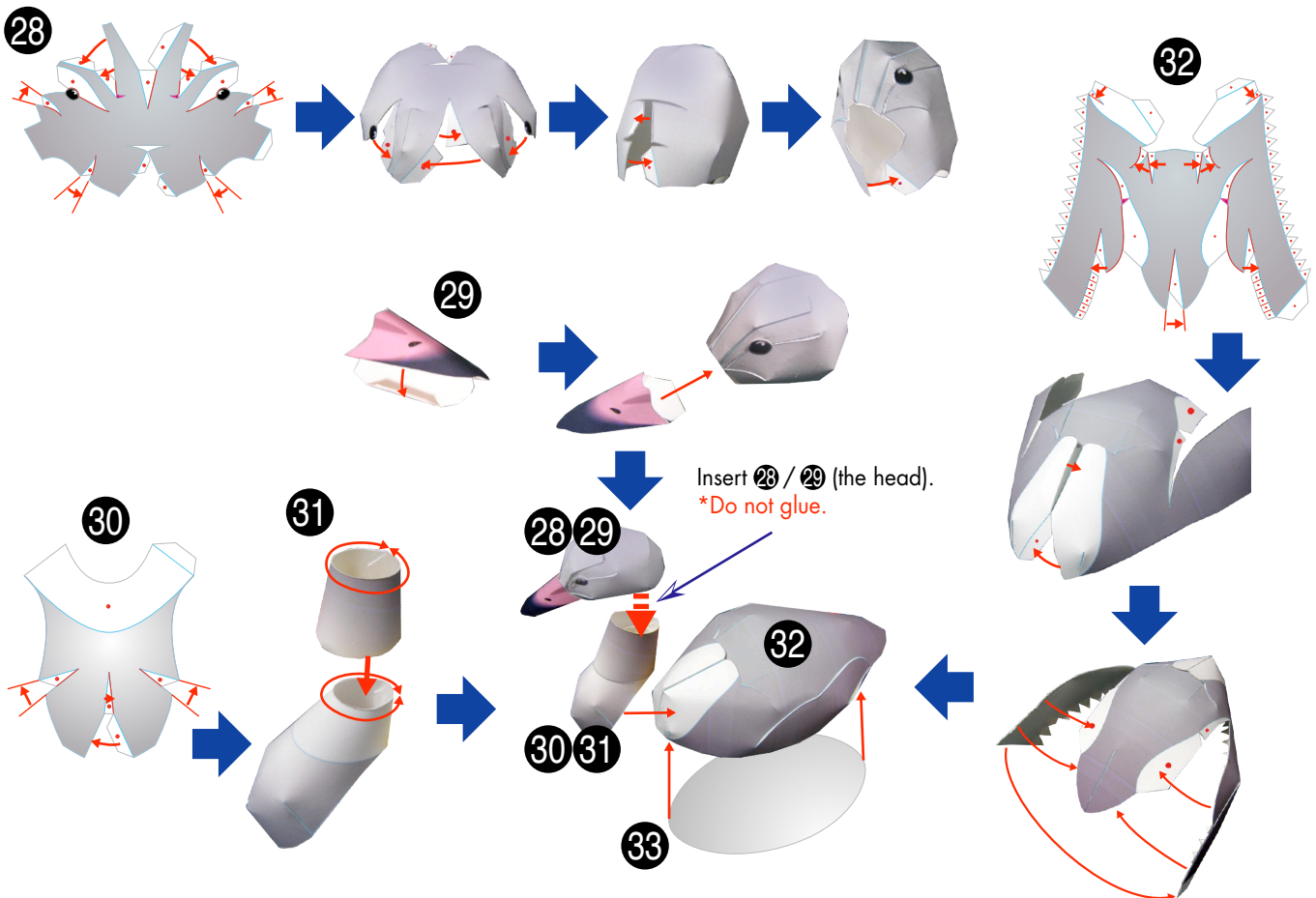
### Attach ⑮ to ⑰ and ㉑ to ㉓, and attach them to ㉔.



Attach 13 and 14 to the part made with parts 15 to 24, insert the neck and your adult whooper swans are complete.



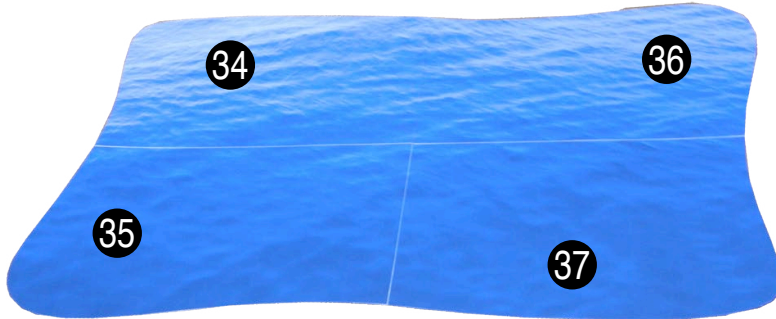
Attach parts 28 to 33 together to make the cygnets.





## Assemble 34 to 37 to make the base.

34 (35 36 37) Glue parts 34 to 37 together as shown.



Assemble 38 and 39, and assemble the nameplate.



## Your whooper swan family is now complete!

Arrange the adults and cygnets on the base to your liking.



Both swans' heads can be turned and posed as you like. Why not make two adults and two cygnets to make a whooper swan family?

You can arrange the two adult swans as a couple, facing each other so that their necks form a heart shape.



## Whooper Swan

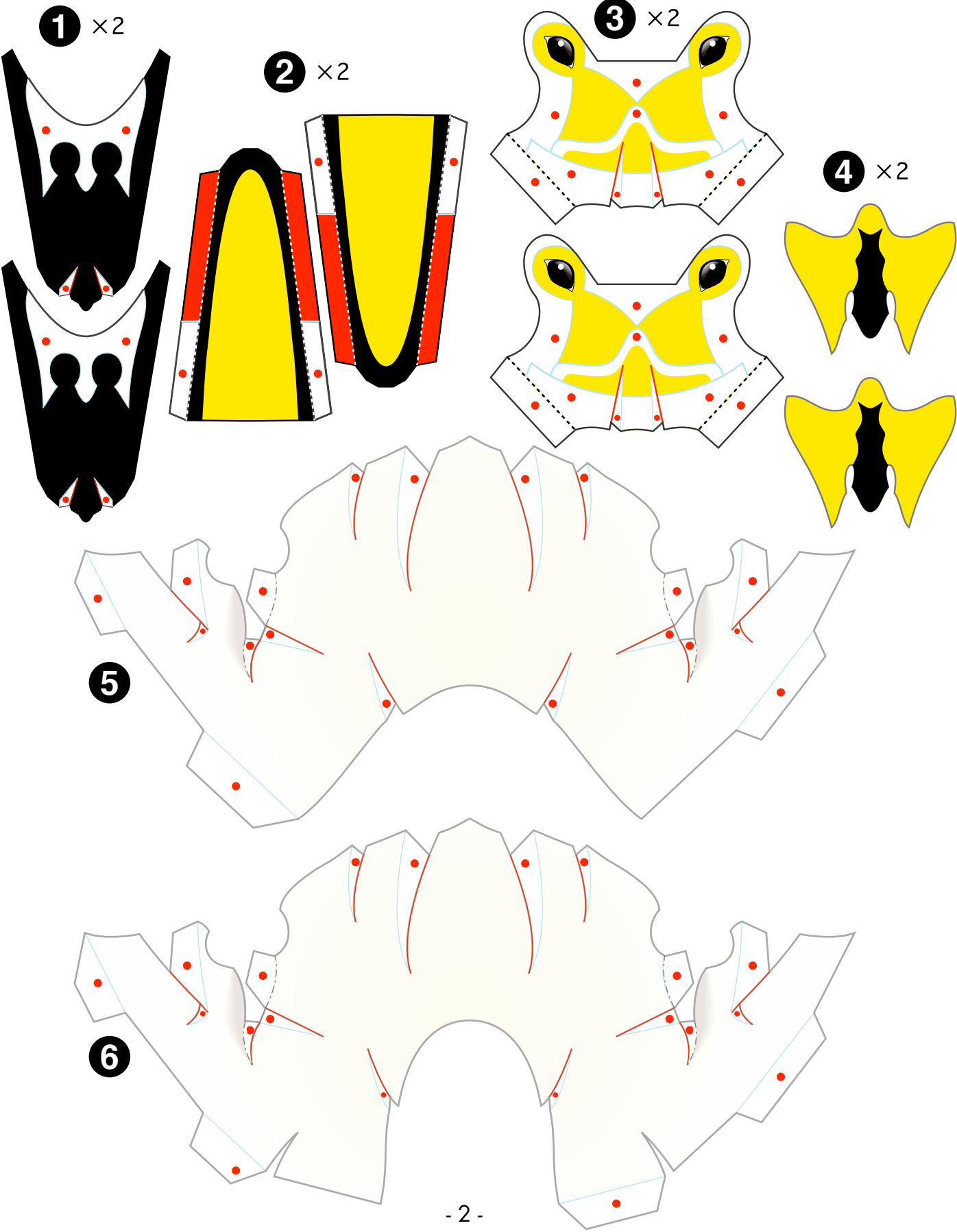
(*Cygnus cygnus*)

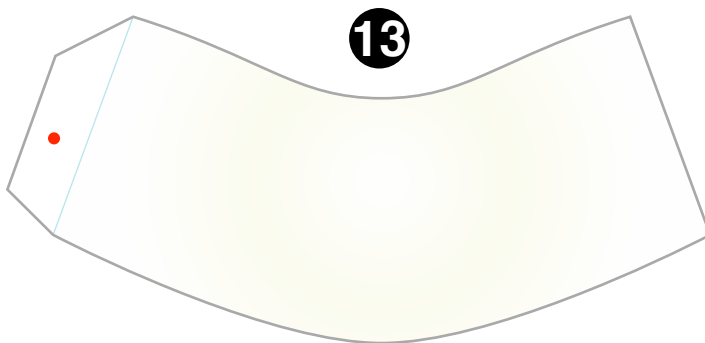
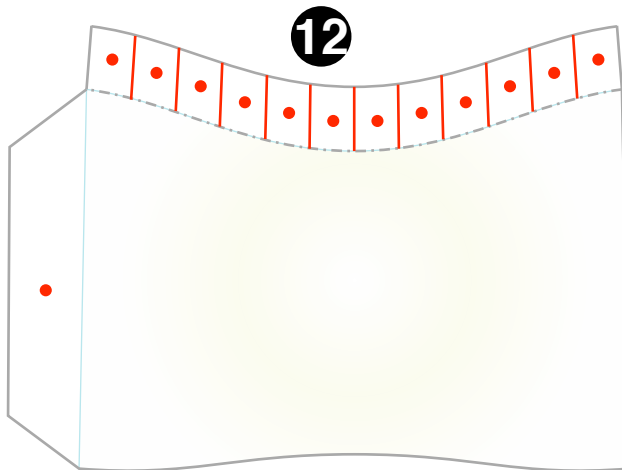
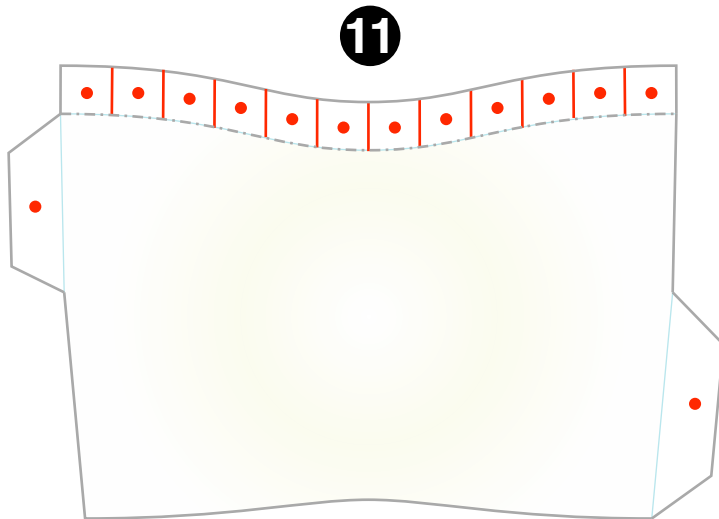
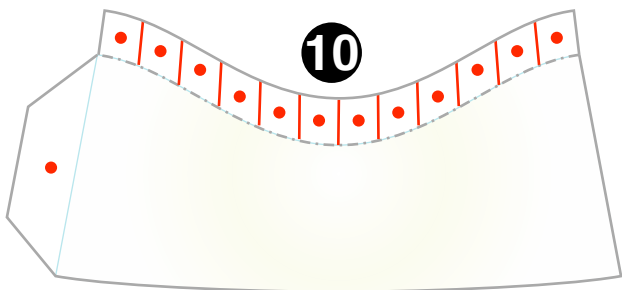
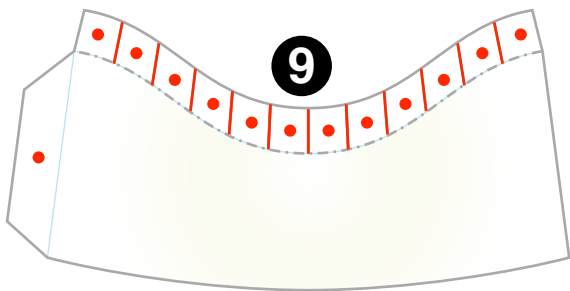
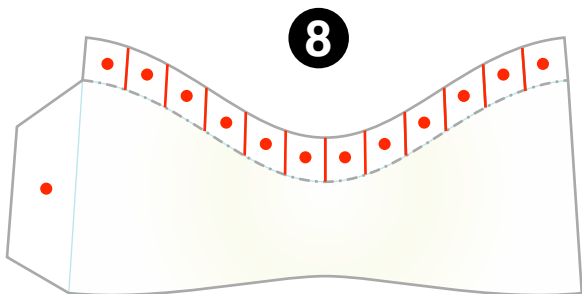
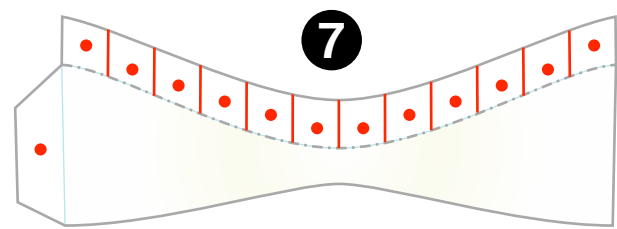
The whooper swan is a large type of waterfowl, whose adults reach lengths of up to 140cm, with wings as long as 60cm each. While their bodies are predominantly white, some feature yellowish markings on the head and neck. There are no color differences distinguishing males and females, but cygnets younger than one year old are gray with brownish streaks, the area around the top of the beak a pinkish white. Also, adults can weigh more than 10kg, which is quite heavy for a flying animal. Take-off requires the assistance of a run-up. Whooper swans feed mostly on the stems and roots of aquatic plants, and their main breeding ground is northern Eurasia, Iceland, etc.

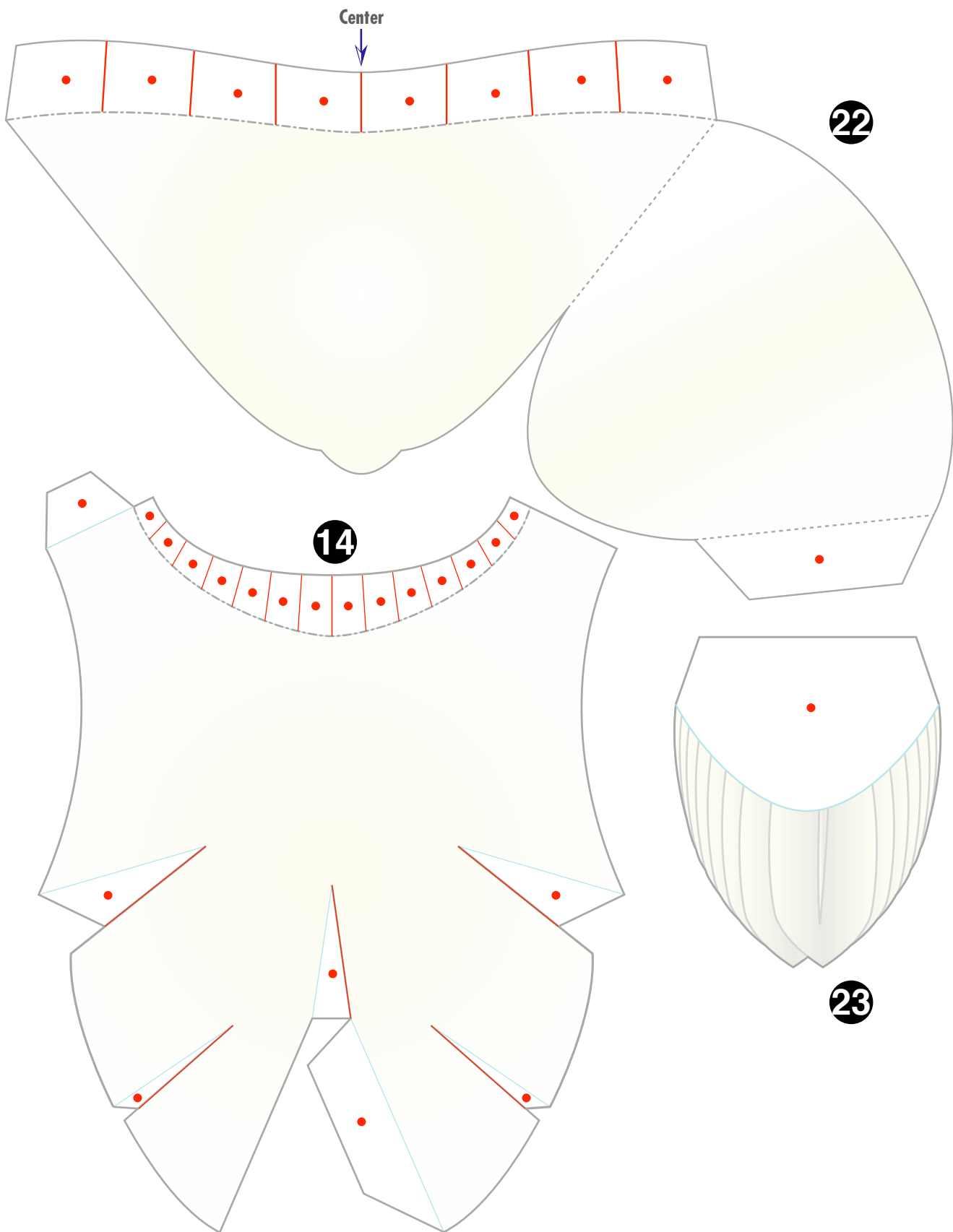
This papercraft is about one half the size of a real whooper swan.

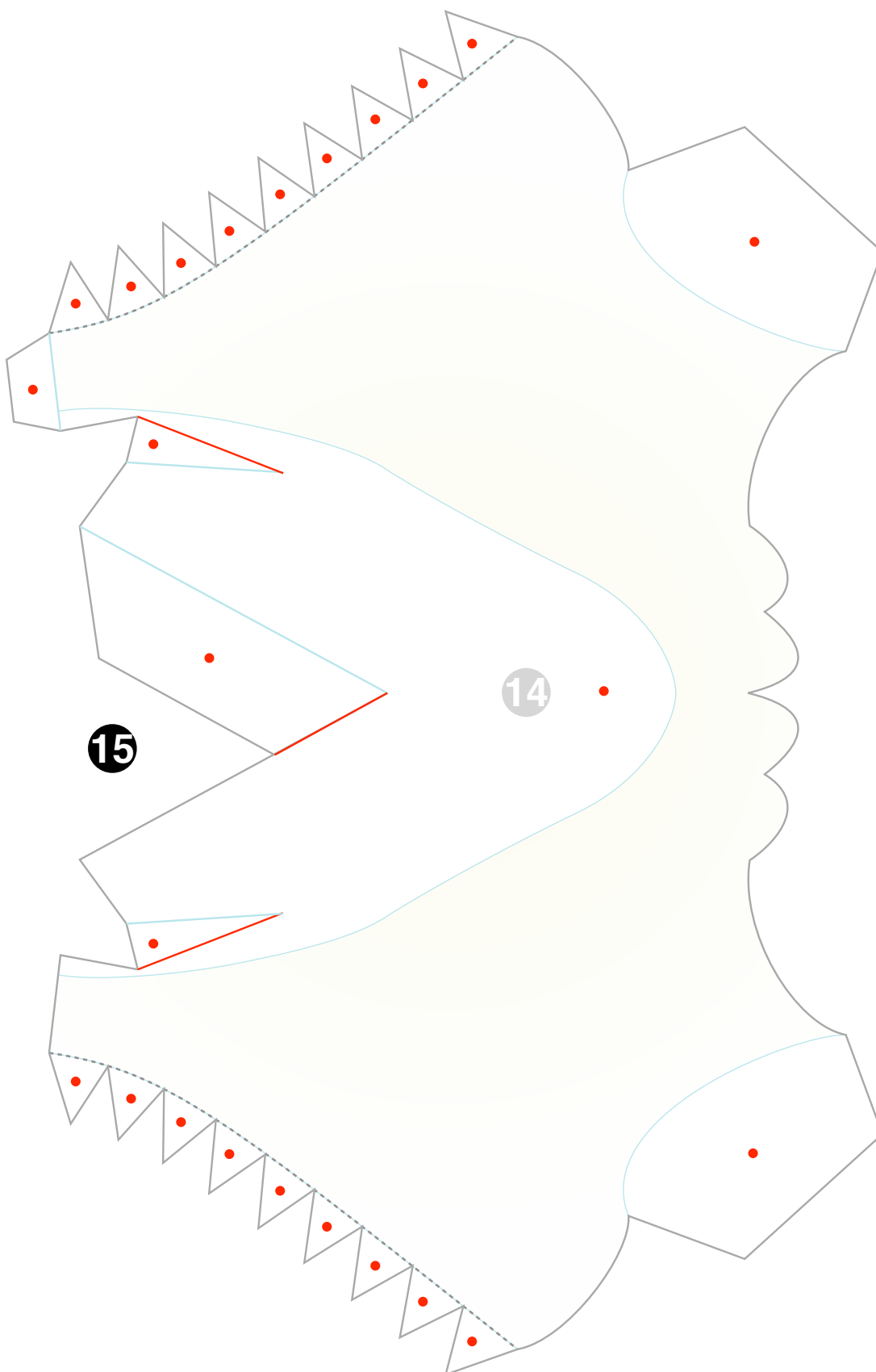


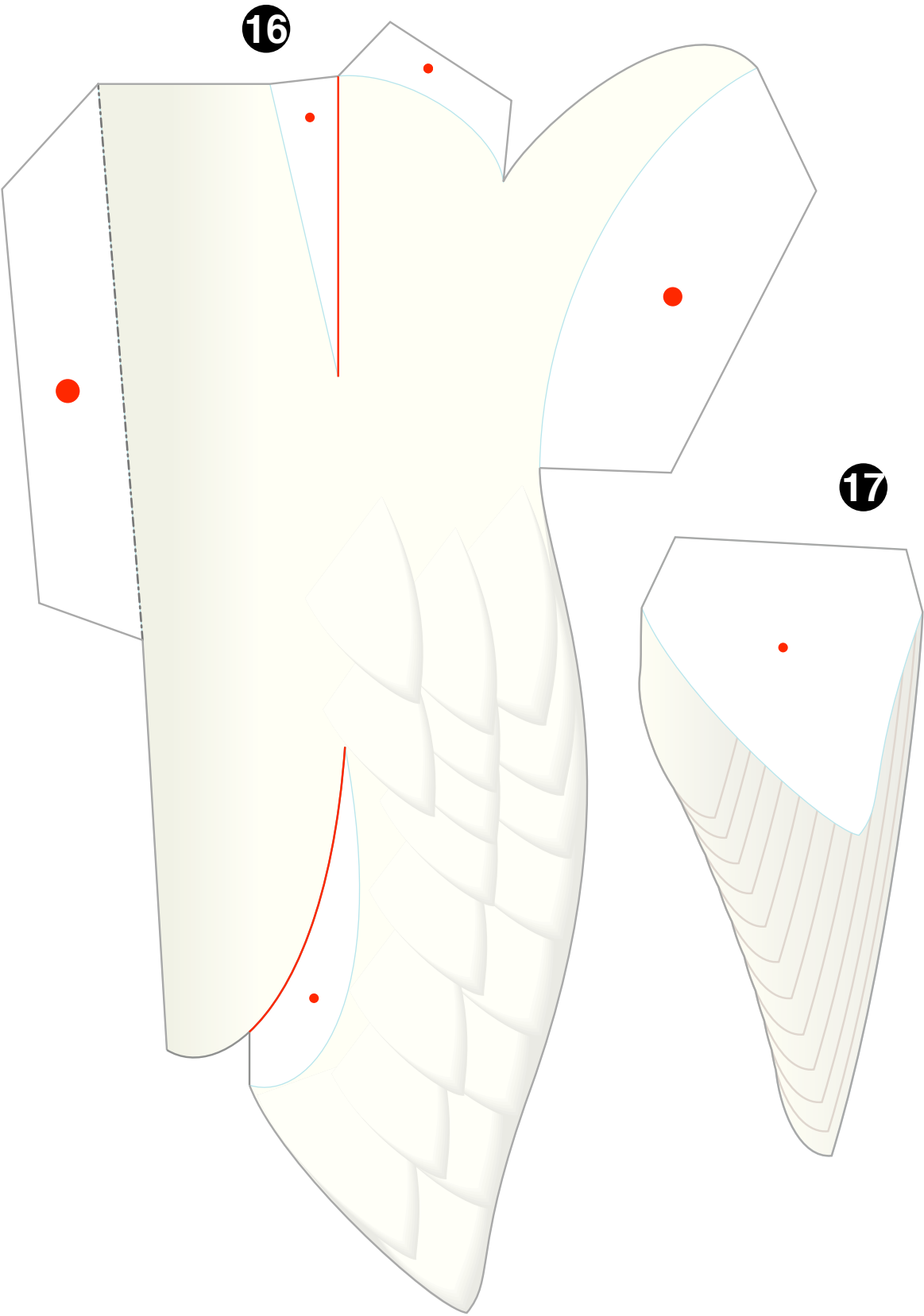




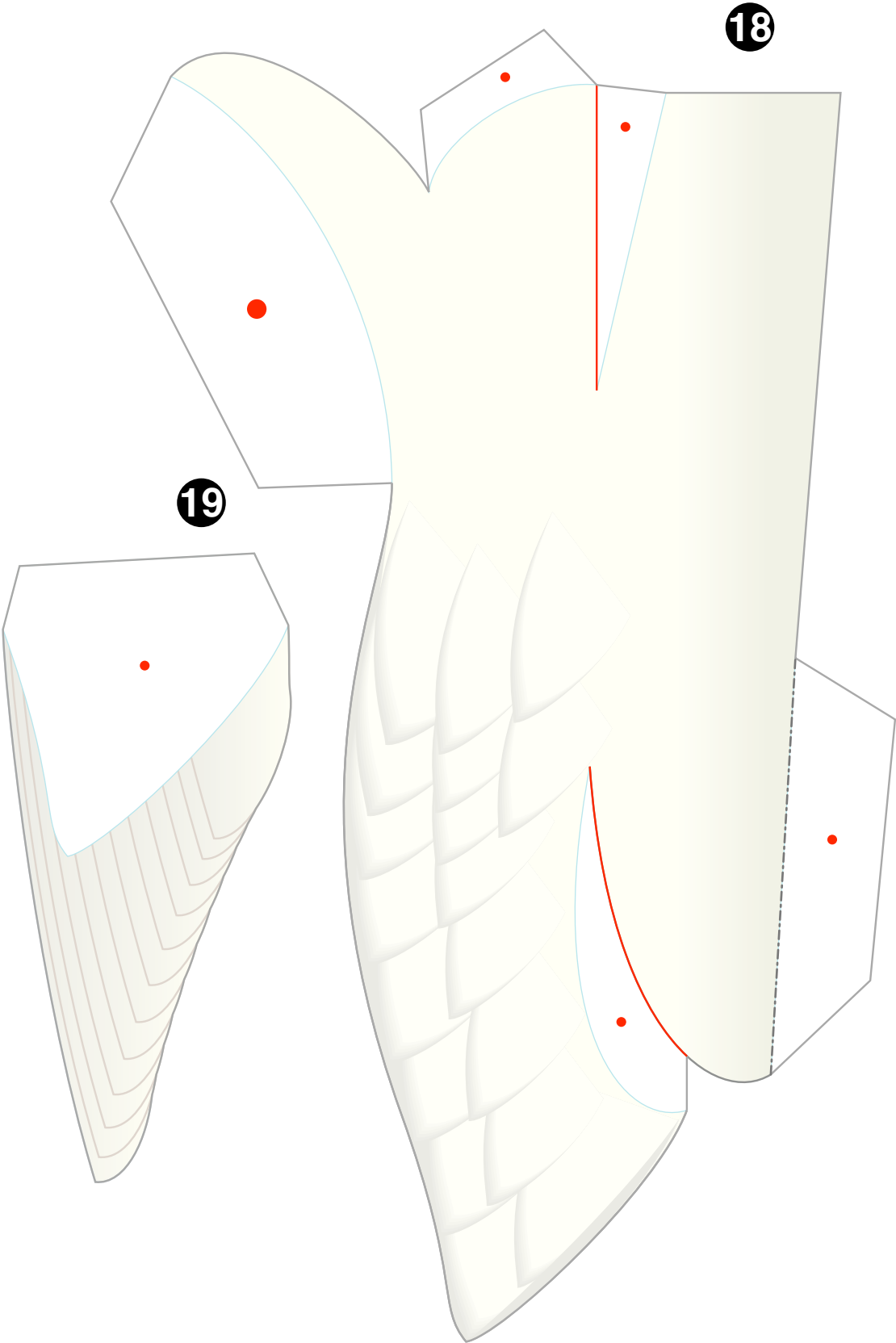


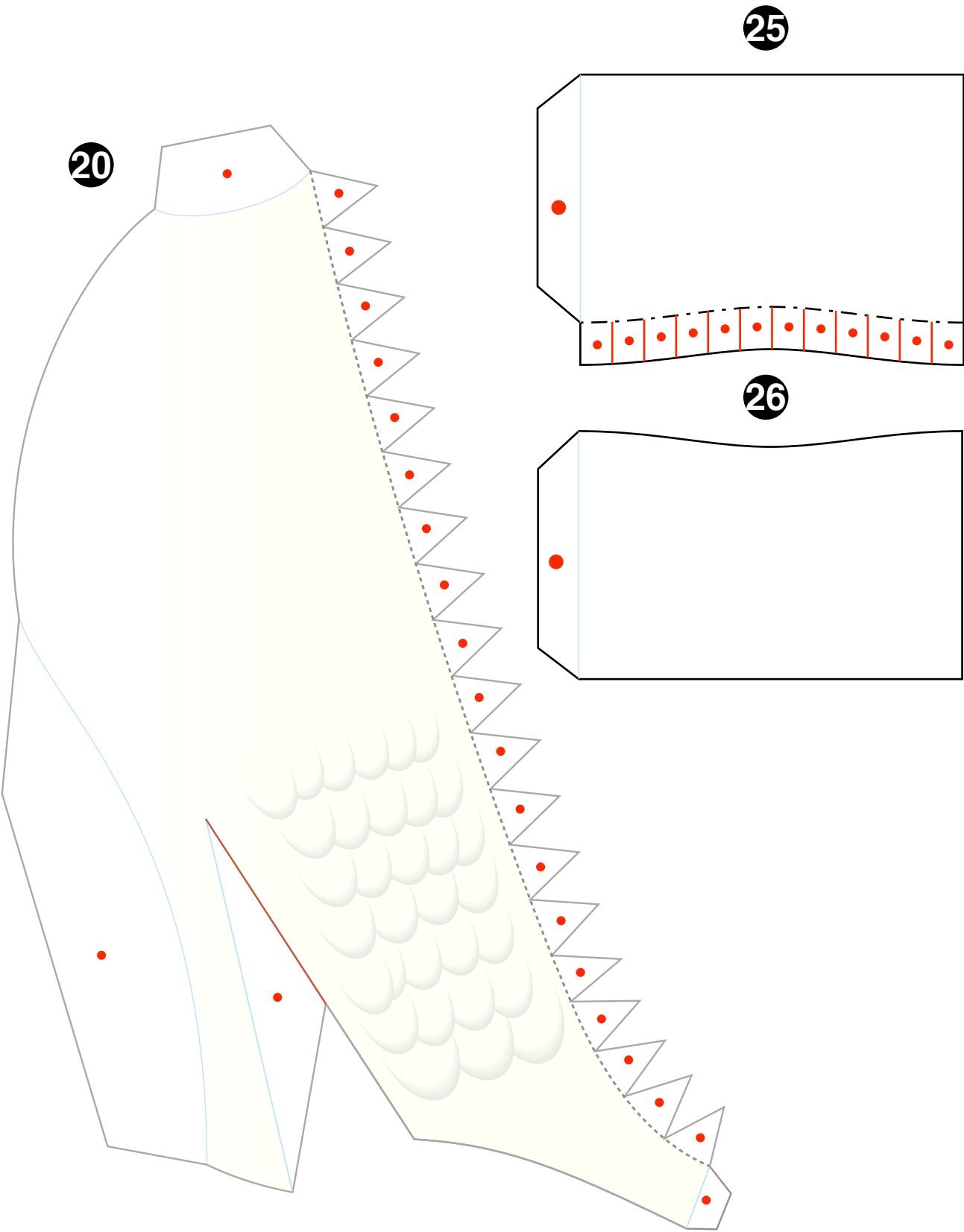


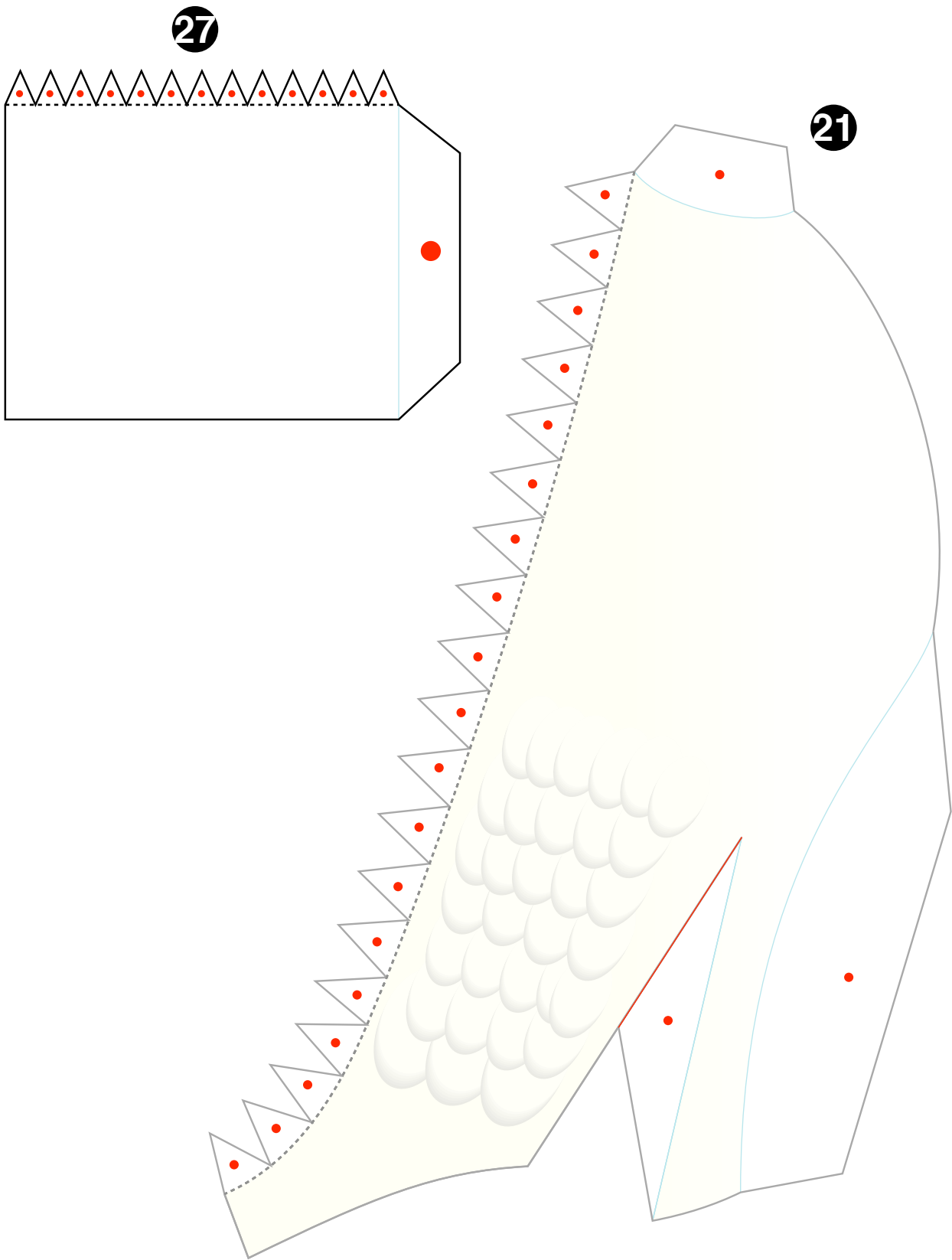


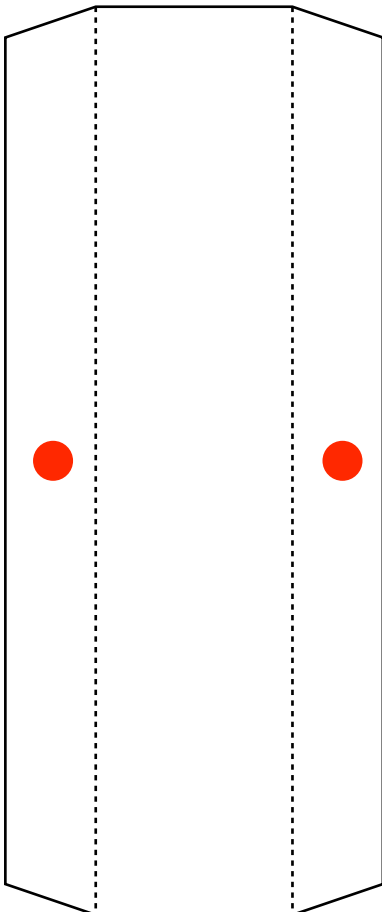
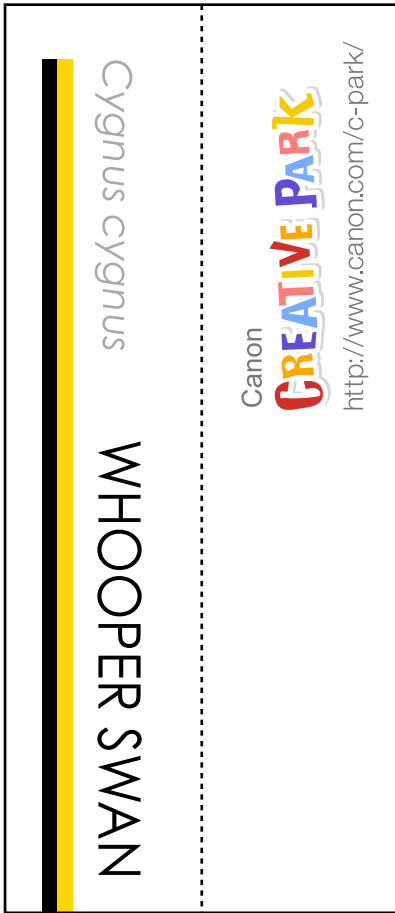






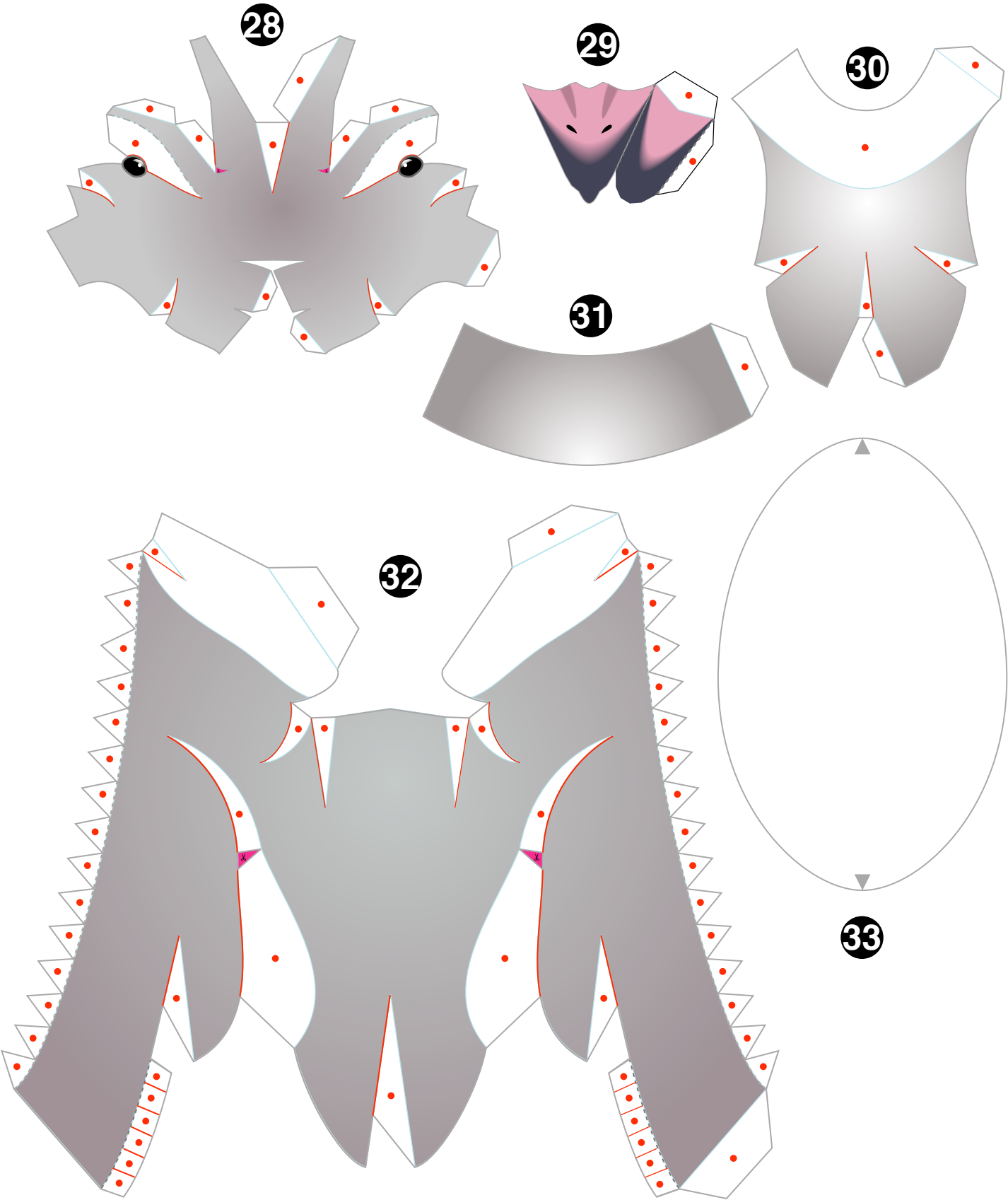






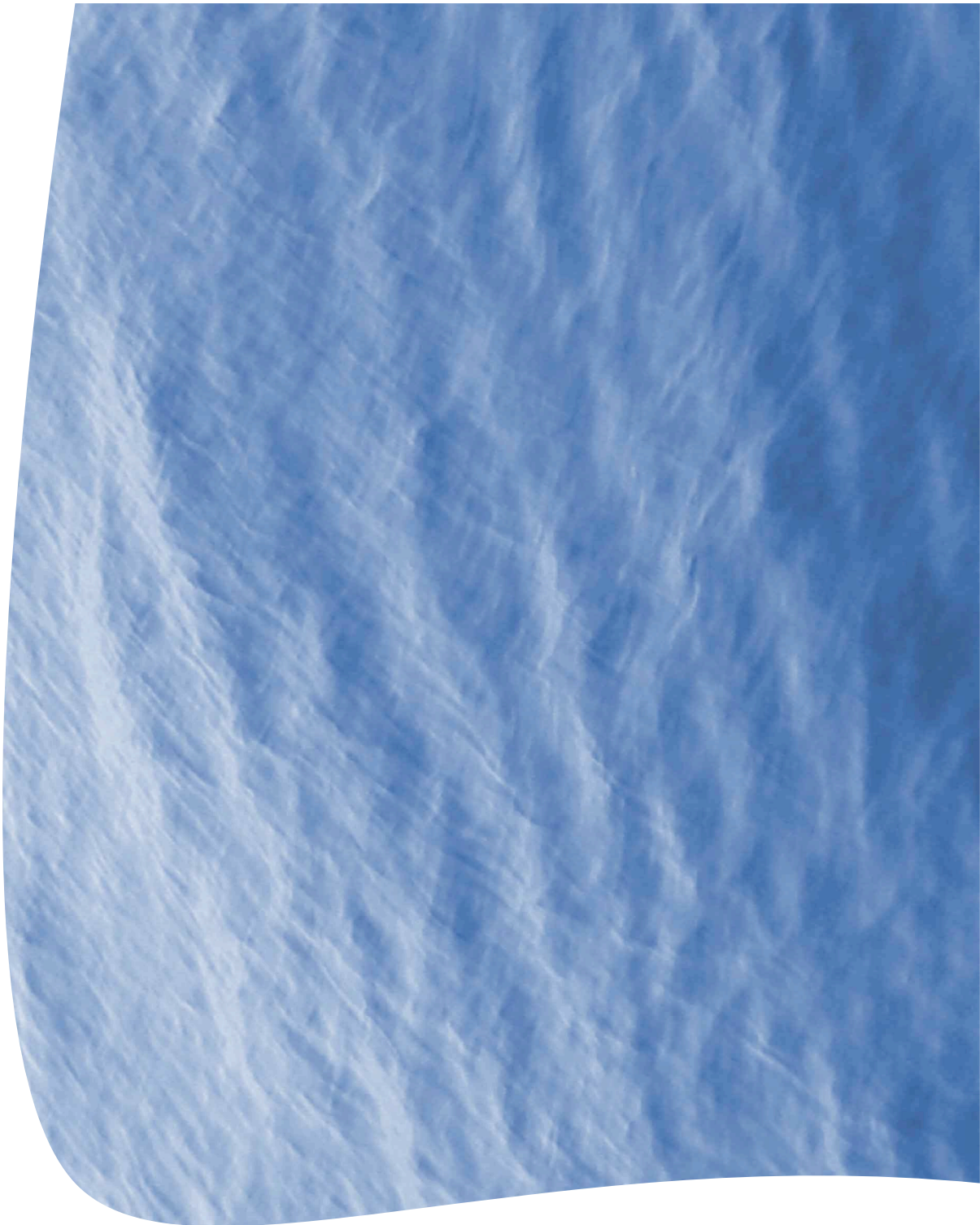
Ikuo Anazawa's  
paper craft  
<http://www1.odn.ne.jp/i-a/>



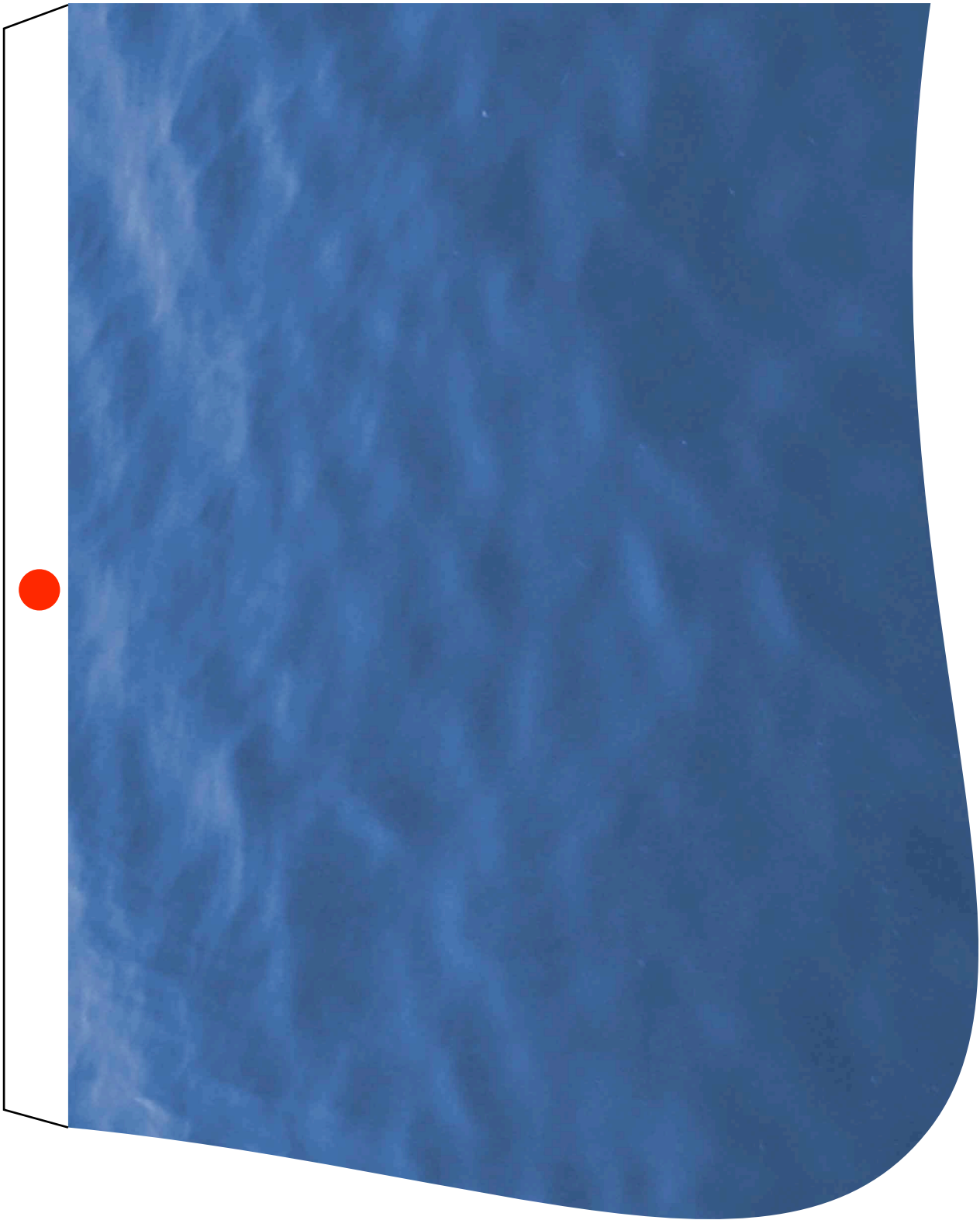




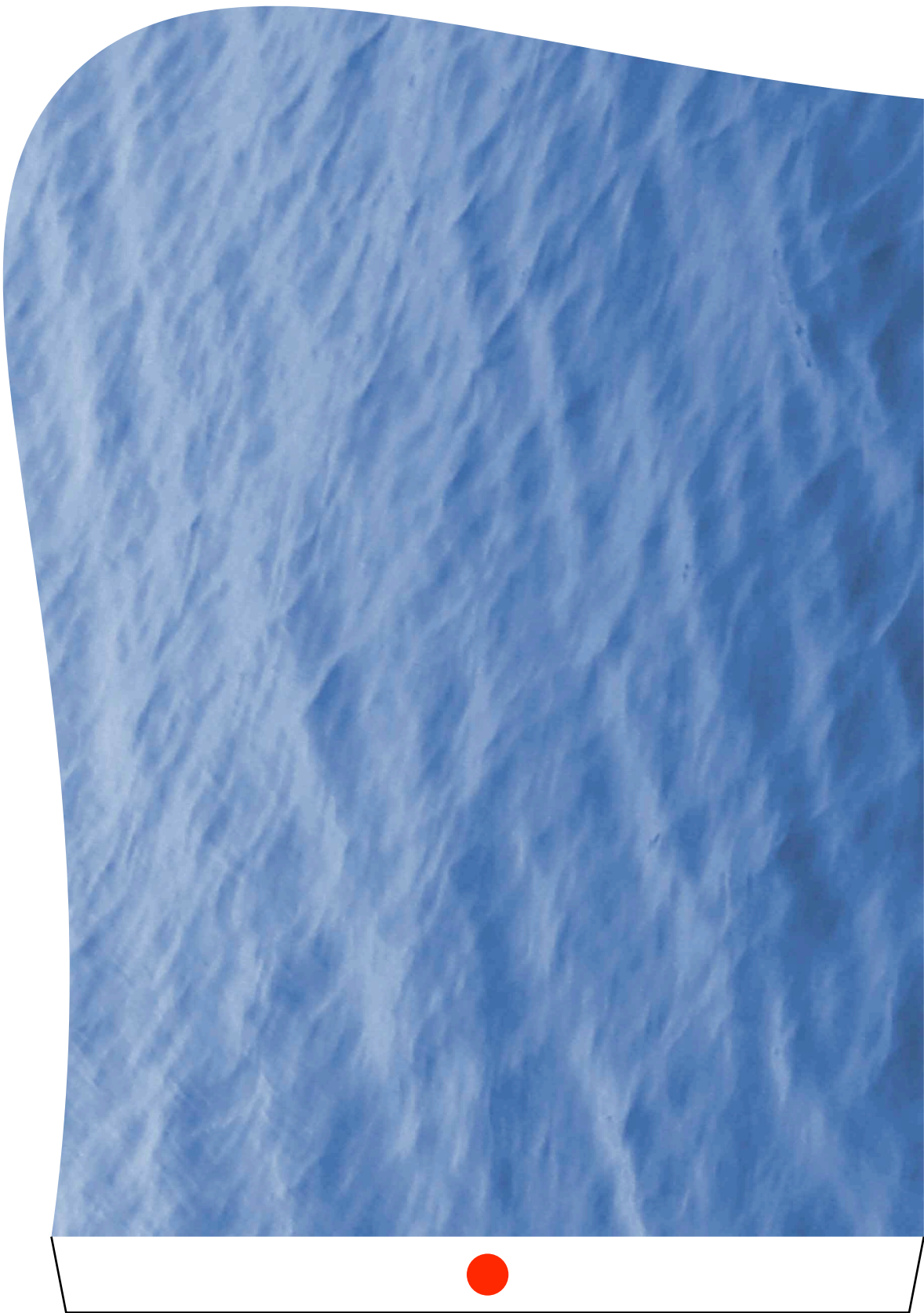
34



35



36



37

