



Mountain Gorilla



Tools

Scissors
Paste, or woodwork glue
Stencil pen, or bodkin
Ruler

Notation Key

——— Scissors line
..... Mountain fold
- - - - - Valley fold
+ Glue spot
A1, B1 Parts No.

- ◆ The Pattern is divided into three blocks:
A (head), B (arms, body, and thigh), and C (hands and legs).
Follow the instructions for each block to assemble your mountain gorilla.

<Caution>

- ※ Keep scissors and glue away from small children.
- ※ Be careful not to cut your fingers when using scissors.

- Mammalia Carnivora Pongidae family
- Length (incl. tail): approx. 150 to 170cm(approx. 4.9 to 5.5 feet)
- Weight: approx. 90 to 180kg (approx. 198.4 to 398.6 lbs)
- Habitat: Uganda, Rwanda, Congo

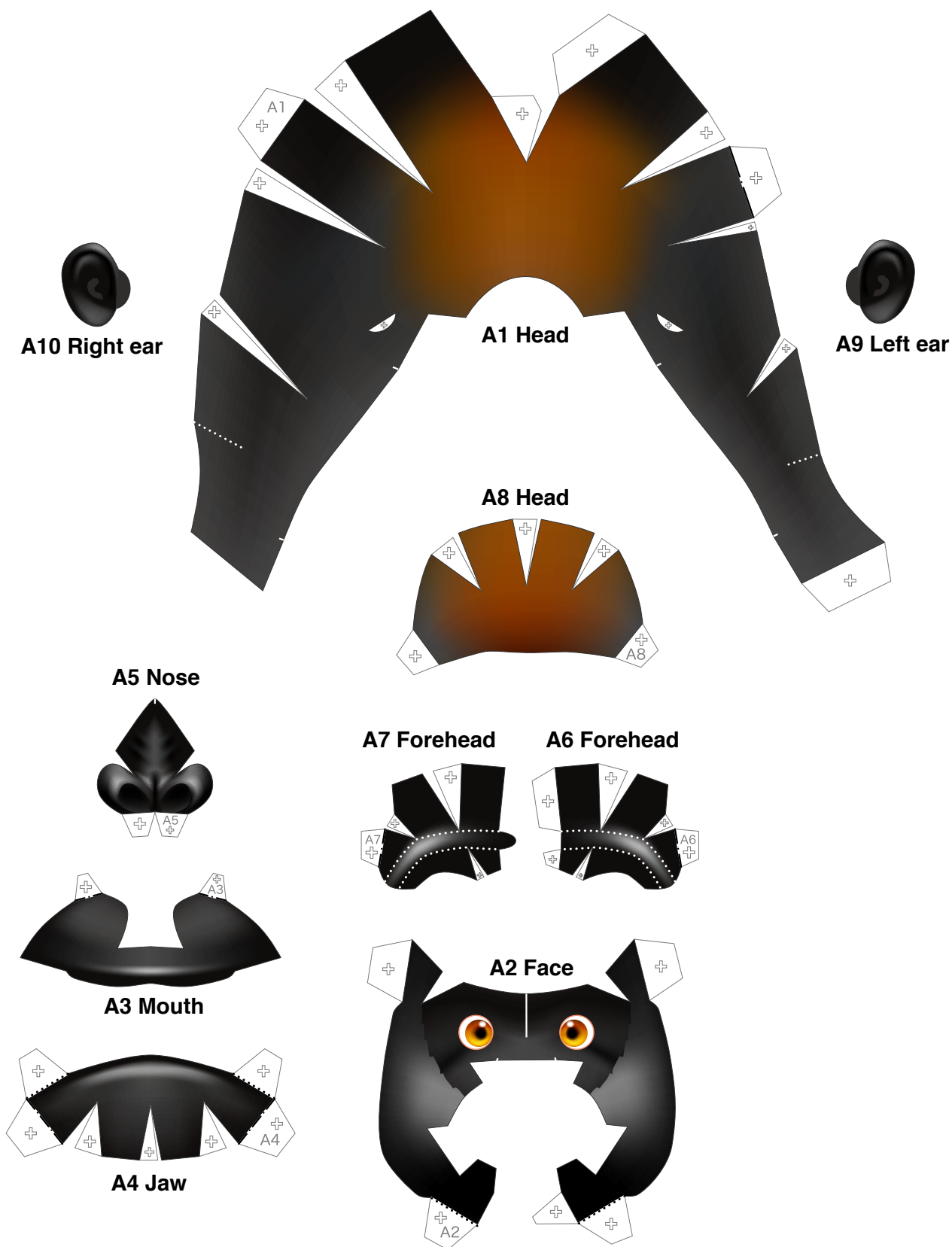
The mountain gorilla can be found in the central African countries of Rwanda, Congo, and Uganda. They make their habitat in tropical forests in the mountains, and live in troops consisting of one male and several females. The mountain gorilla has a robust body and protruding stomach, and moves on the ground by "knuckle-walking" as its arms are longer than its legs. When a male reaches maturity, its back becomes a grayish-white color, and its head takes on a conical shape. It also begins to use chest-beating as a way of expressing aggression. Mountain gorillas eat thistles and nettles that grow in the mountains. It is estimated that as little as 1,000 gorillas currently exist in the wild, making them at high risk of extinction.





Head parts

Refer to Assembly Instructions: Page1 / Page2.

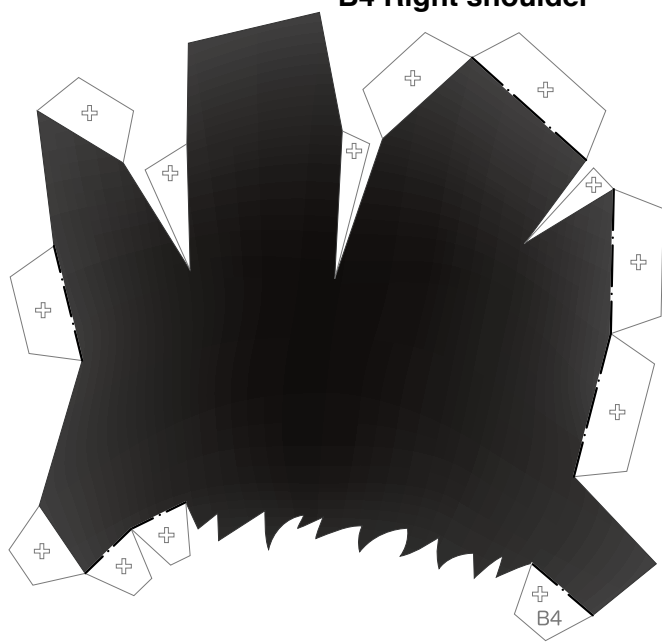




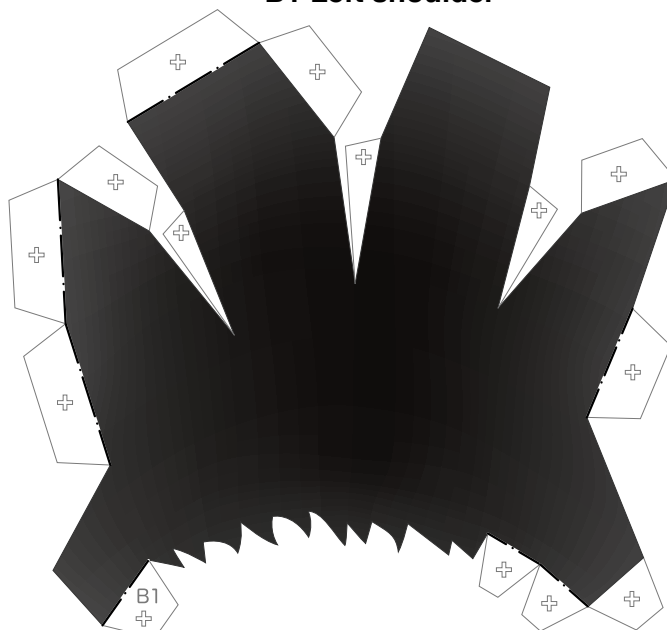
Arm parts

Refer to Assembly Instructions: Page2 / Page3.

B4 Right shoulder



B1 Left shoulder



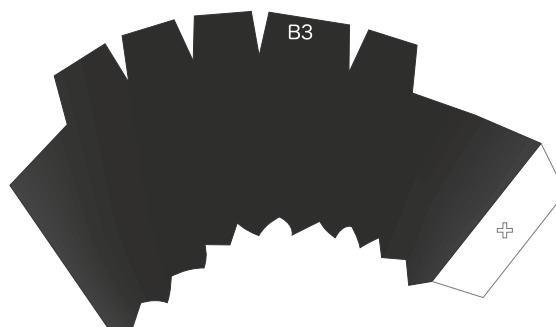
B2 Left arm



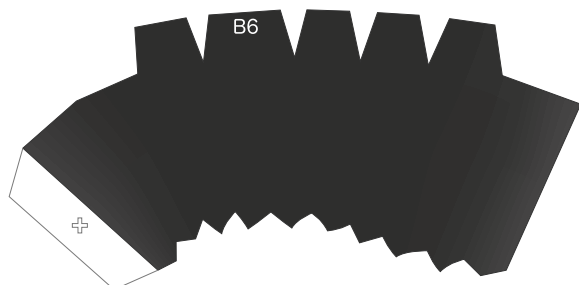
B5 Right arm



B3 Left arm

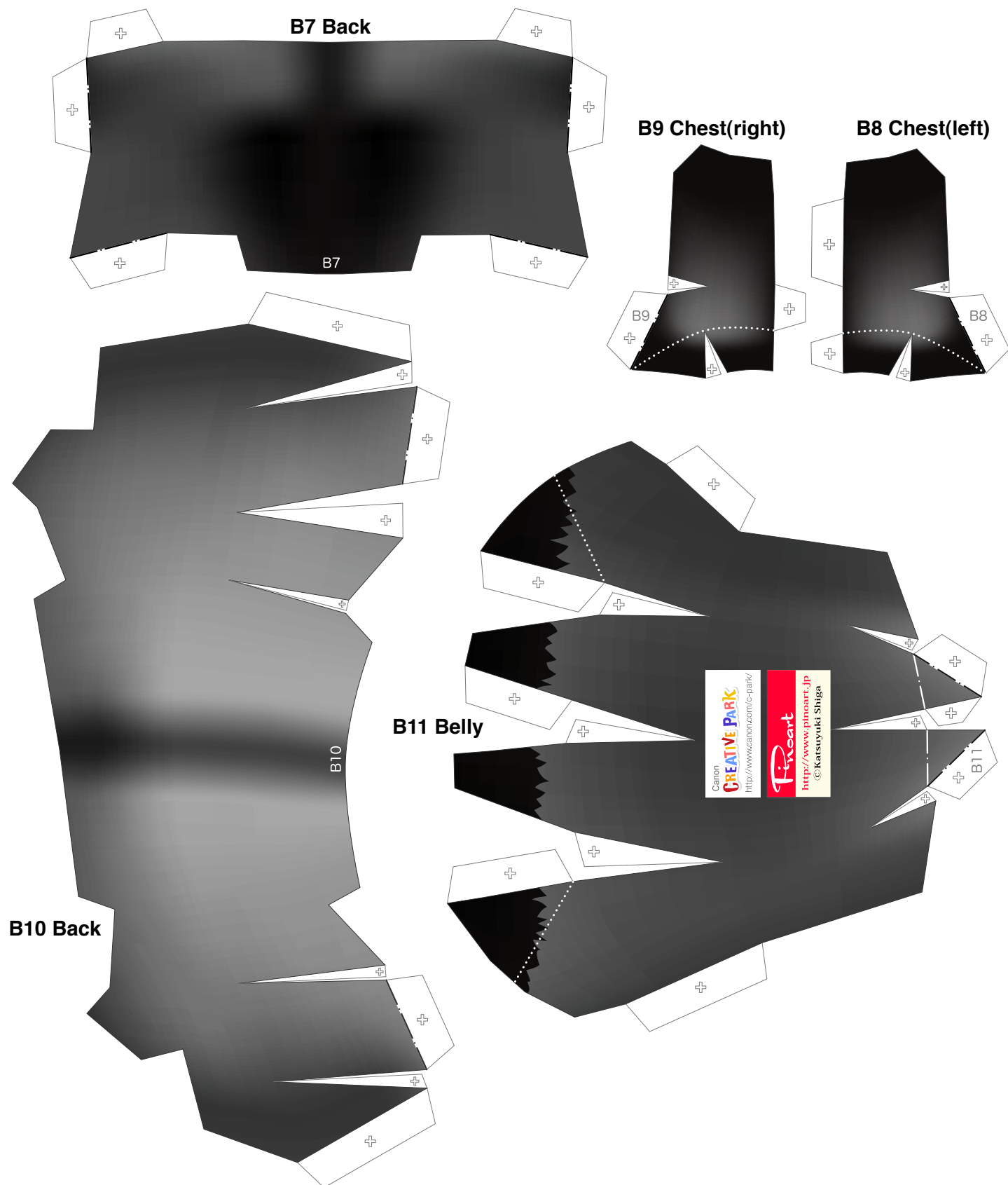


B6 Right arm



B Body parts

Refer to Assembly Instructions: Page3.

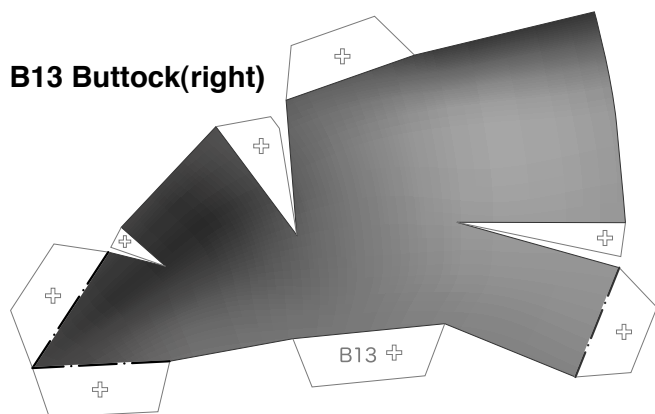


B

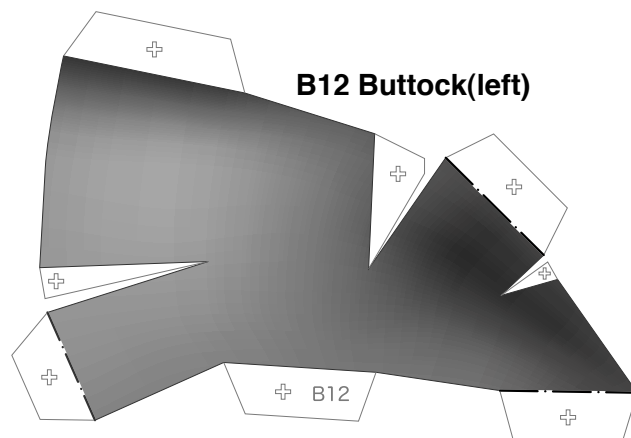
Body and thigh parts

Refer to Assembly Instructions: Page3 / Page4.

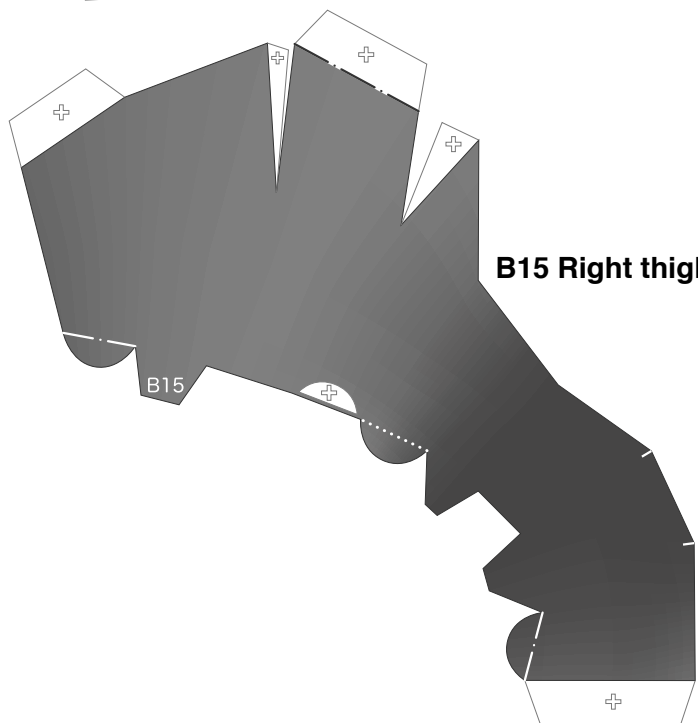
B13 Buttock(right)



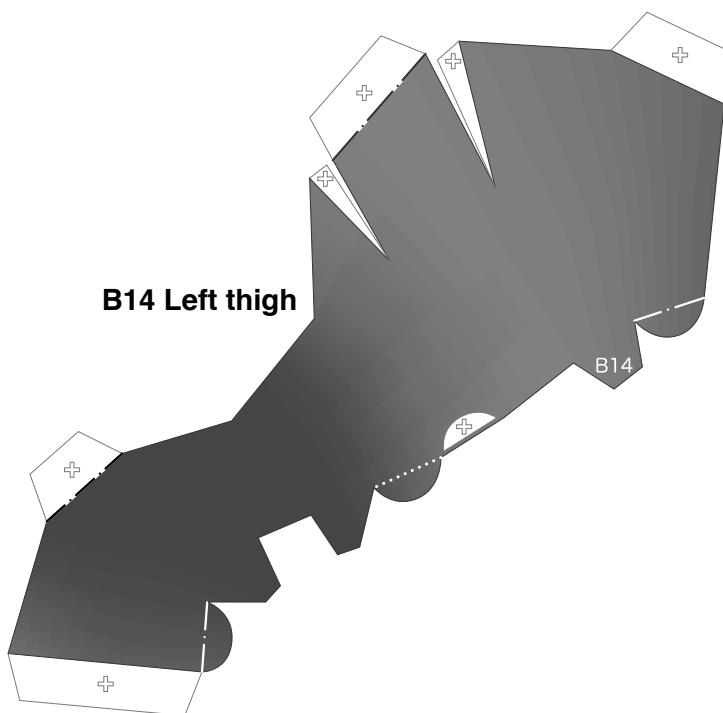
B12 Buttock(left)



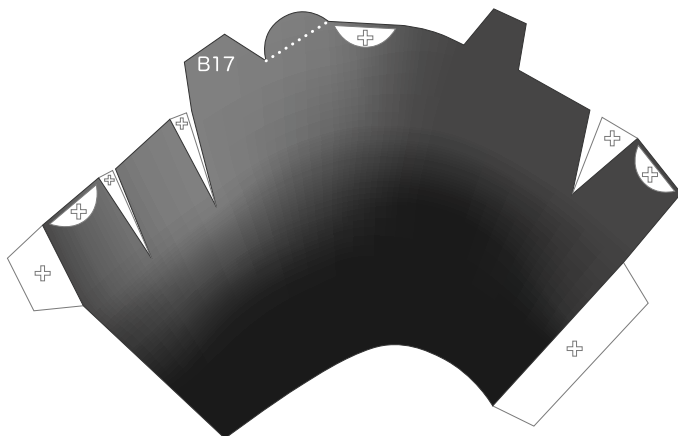
B15 Right thigh



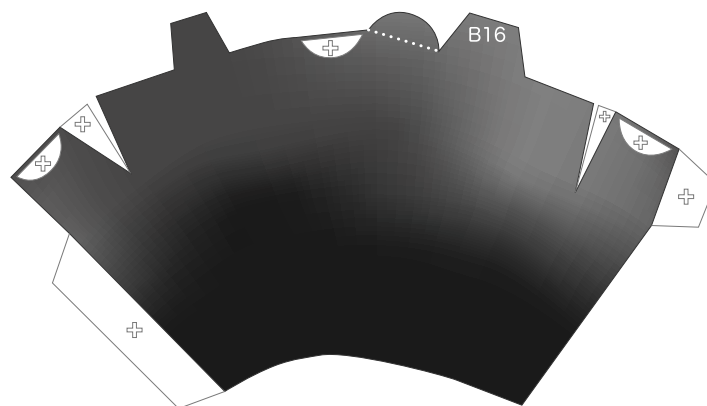
B14 Left thigh



B17 Right thigh



B16 Left thigh





Hand and leg parts

Refer to Assembly Instructions: Page4.

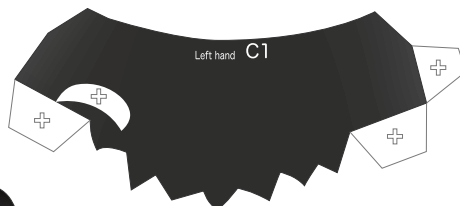
C4 Right hand



C6 Right hand



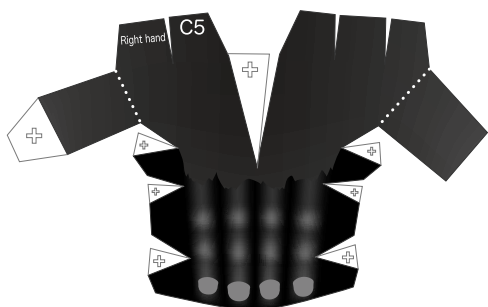
C1 Left hand



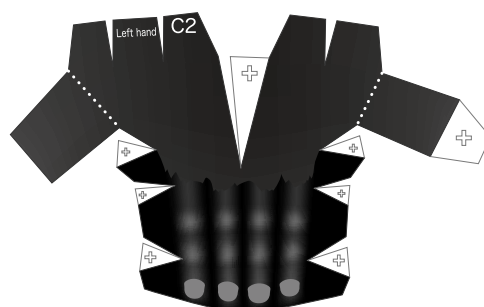
C3 Left hand



C5 Right hand



C2 Left hand



C9 Right leg



C10 Right leg



C7 Left leg



C8 Left leg

