



Lion



- Mammalia Carnivora Felidae
- Length (incl. tail): approx. 1.5 to 2.4m (approx. 4.92 to 7.87 feet)
- Weight: approx. 150 to 260kg (approx. 330.69 to 573.20 lbs)
- Habitat: Certain regions of Africa and India

The lion is a large carnivore from the cat family. Its current habitat is limited to some areas of Africa and India, but there was a time when lions could be found all over Africa, Asia, and southern Europe. The lion's dignified appearance and demeanor, along with its ranking among the strongest animals in the world, make it known as the "king of beasts." Lions usually travel in groups known as "prides," usually consisting of one or two males, three to six females and several children. They feed on many different things, their prey including everything from beetles and reptiles, to large herbivorous animals.



Tools

Scissors
Paste, or woodwork glue
Stencil pen, or bodkin
Ruler

Notation Key

——— Scissors line
..... Mountain fold
- - - - - Valley fold
+ Glue spot
⊙ Glue reverse side
A1, B1 Parts No.

- ◆ The Pattern are divided into three blocks:
A (head), B (body), C (legs).
Follow the instructions for each block to assemble your lion.

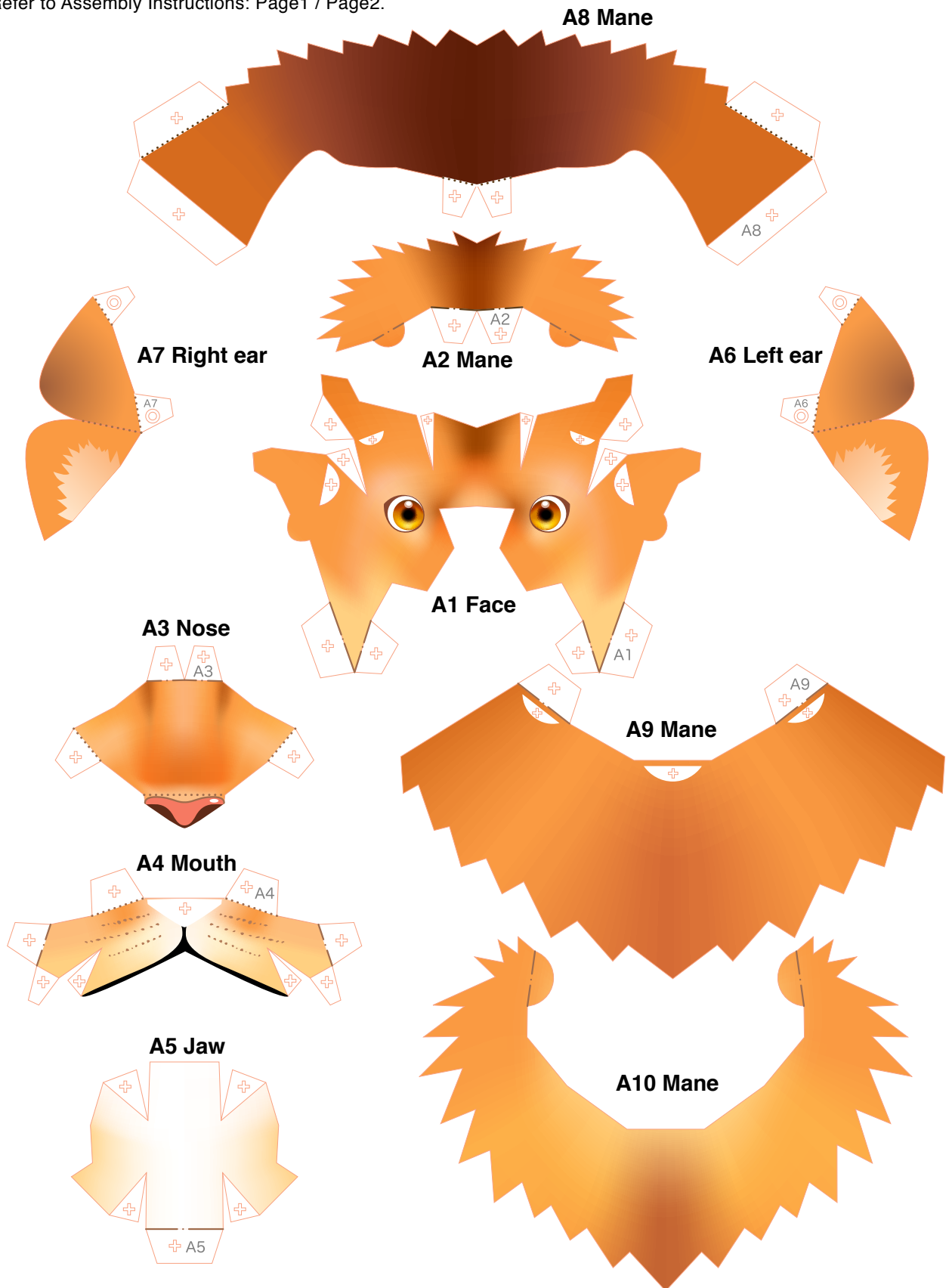
<Caution>

- ✂ Keep scissors and glue away from small children.
- ✂ Be careful not to cut your fingers when using scissors.



Head parts

Refer to Assembly Instructions: Page1 / Page2.

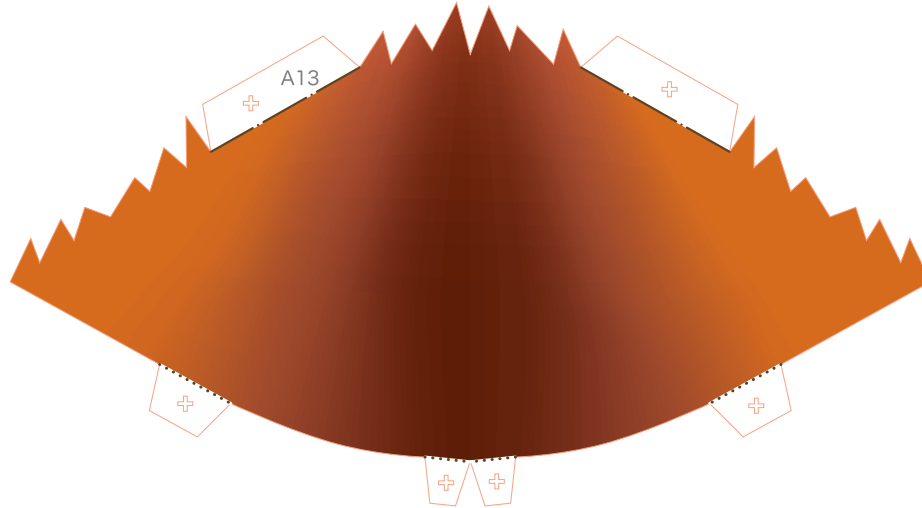




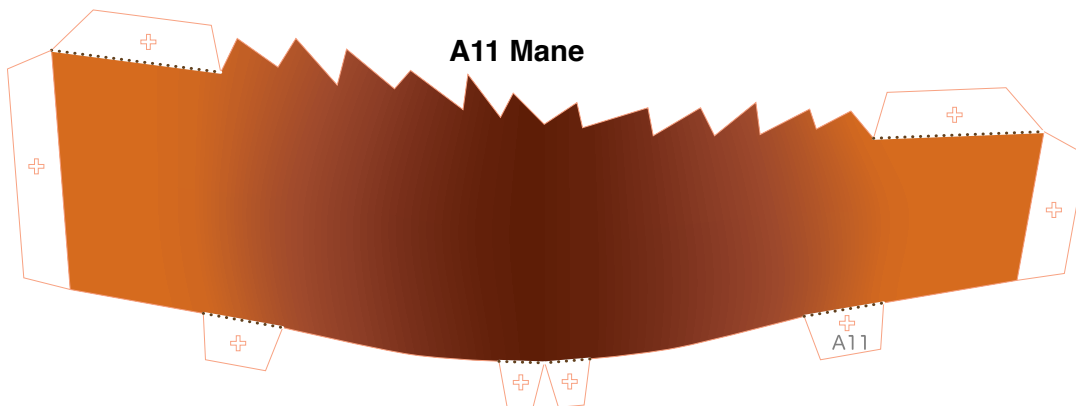
Head parts

Refer to Assembly Instructions: Page2.

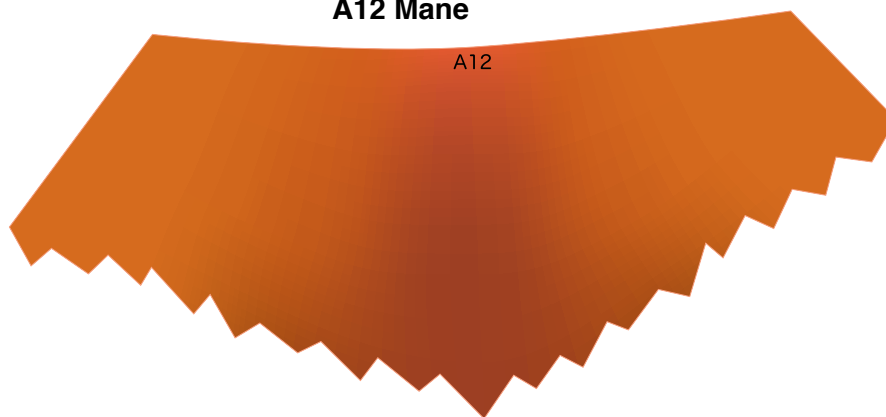
A13 Mane



A11 Mane



A12 Mane

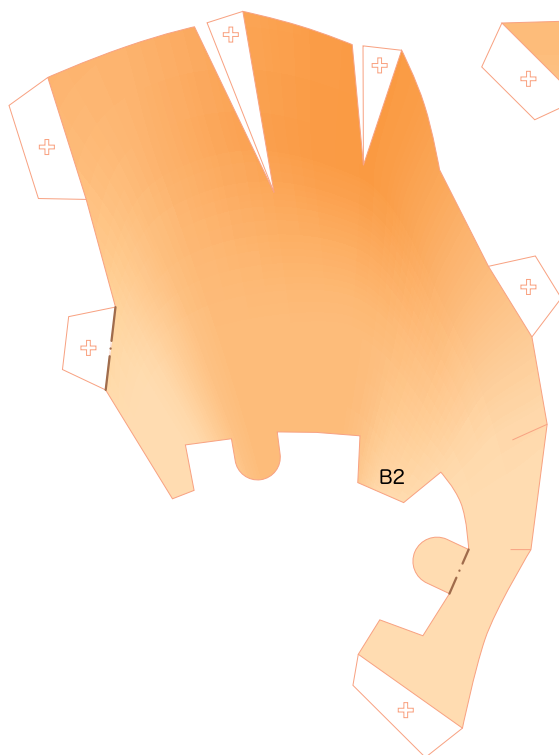




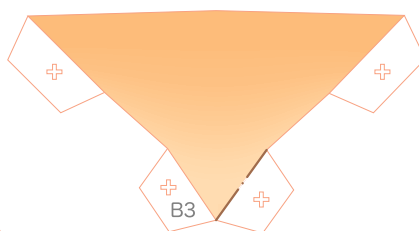
Body Parts

Refer to Assembly Instructions: Page3.

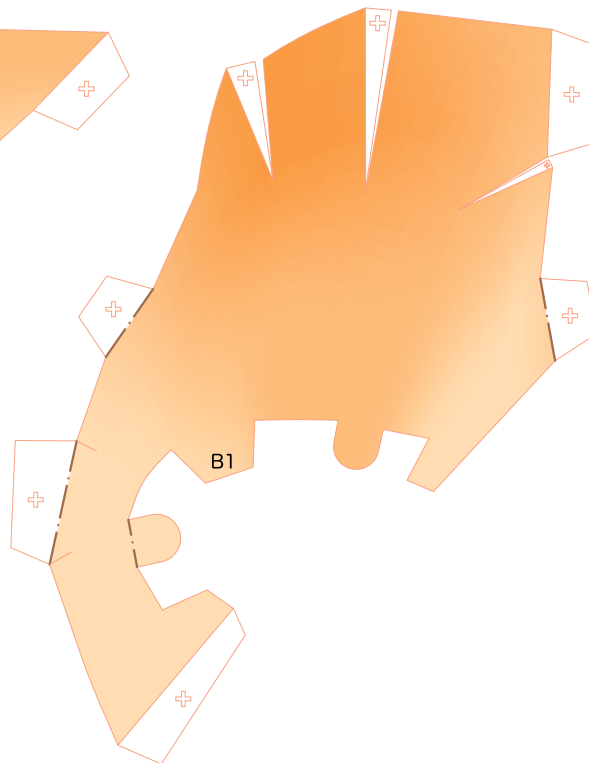
B2 Right shoulder



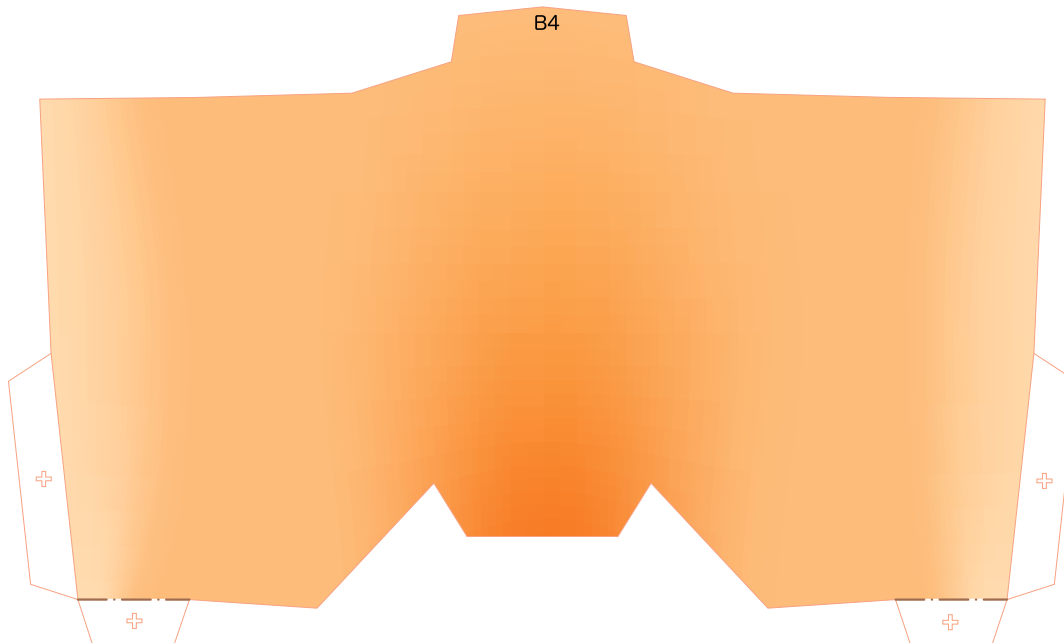
B3 Chest



B1 Left shoulder

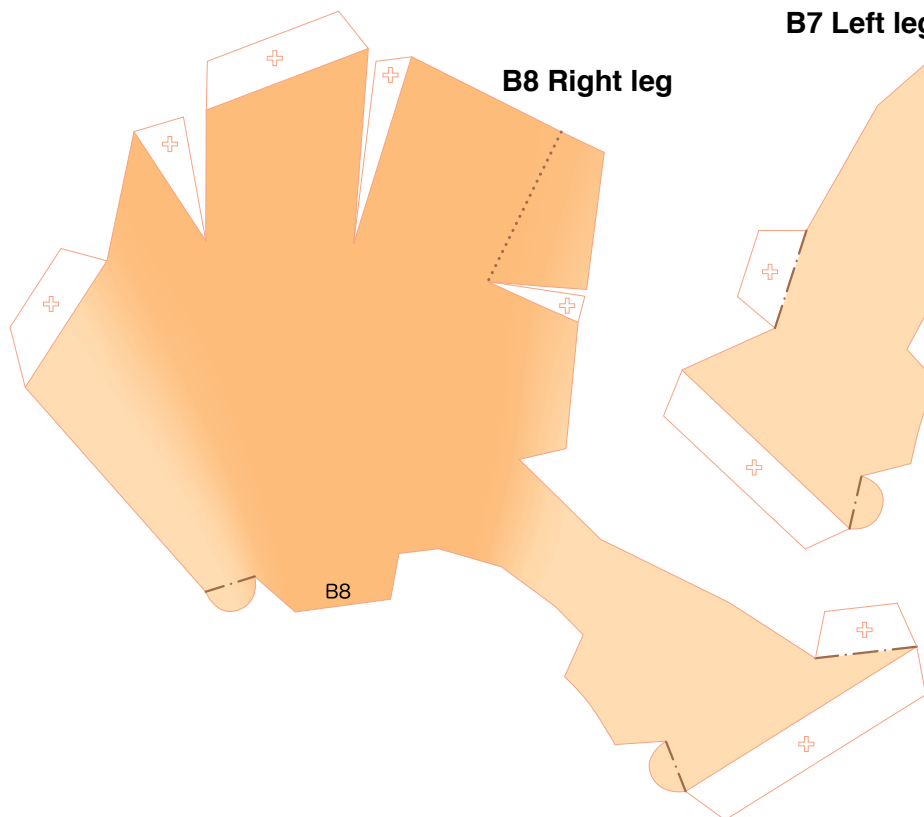
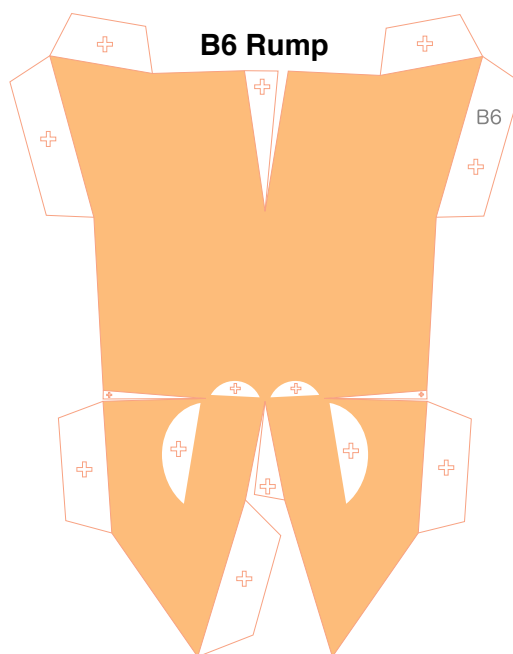
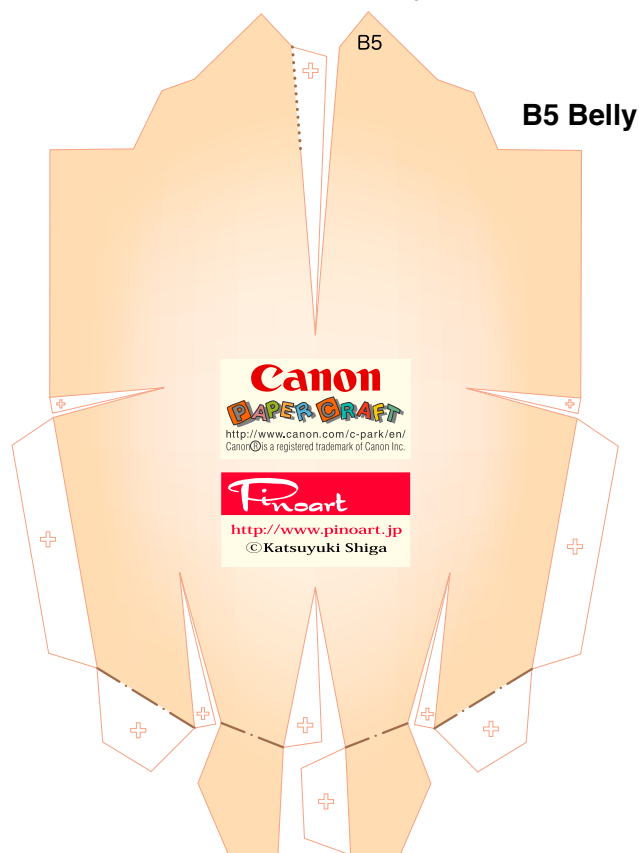


B4 Back



B Body Parts

Refer to Assembly Instructions: Page3.

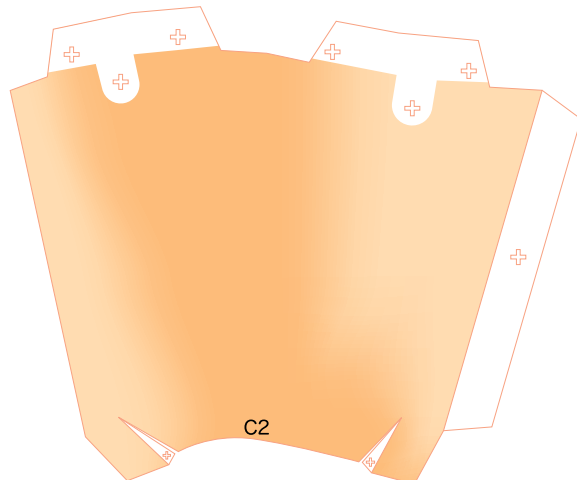




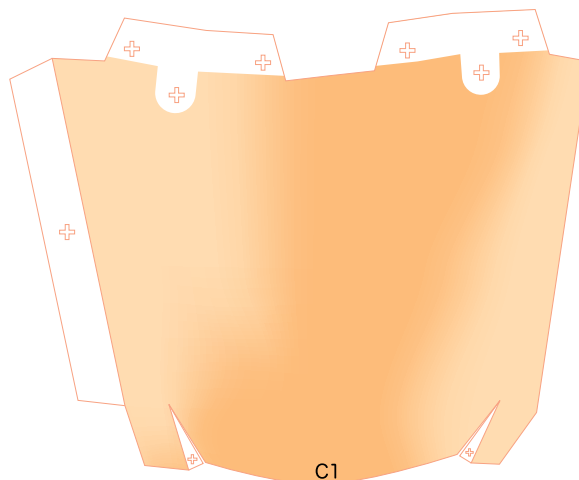
Leg parts

Refer to Assembly Instructions: Page4.

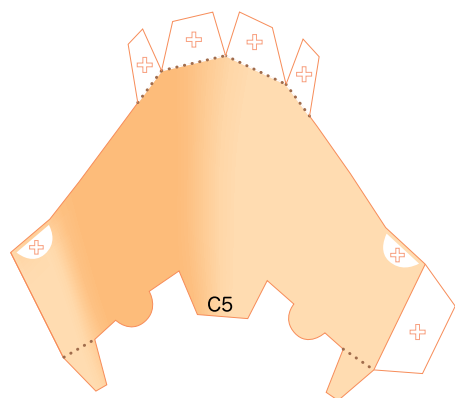
C2 Right front leg



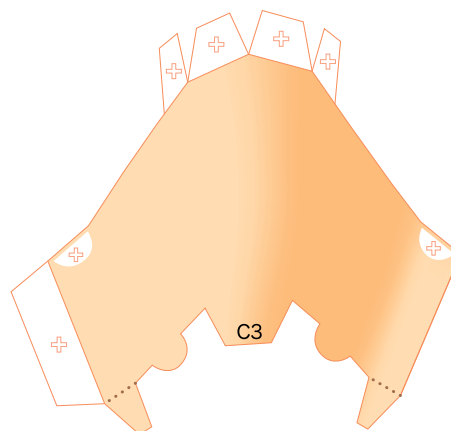
C1 Left front leg



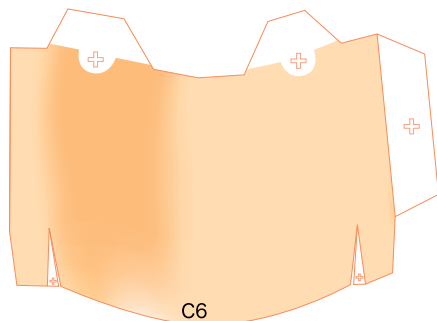
C5 Right hind leg



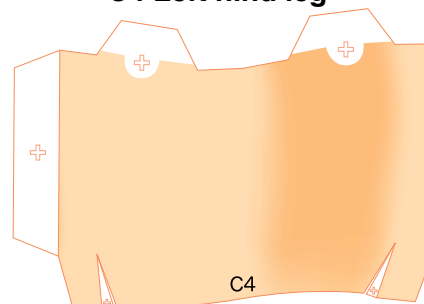
C3 Left hind leg



C6 Right hind leg



C4 Left hind leg



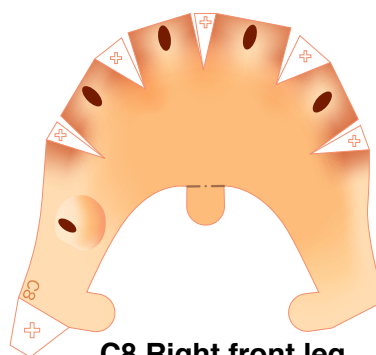


Leg parts

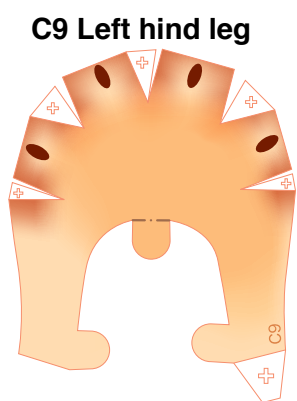
Refer to Assembly Instructions: Page4.



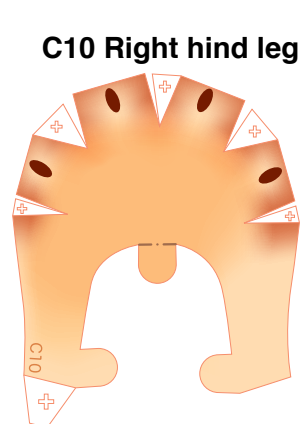
C7 Left front leg



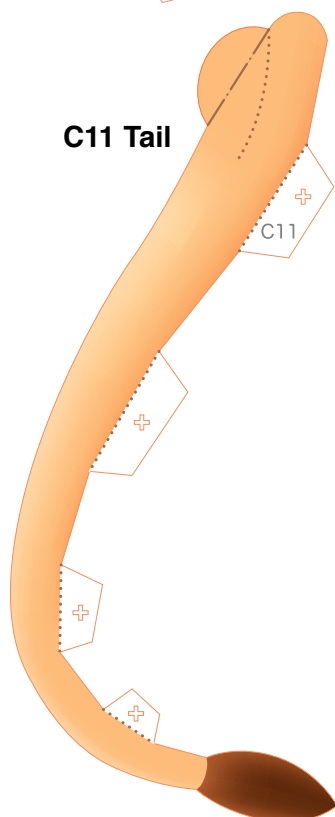
C8 Right front leg



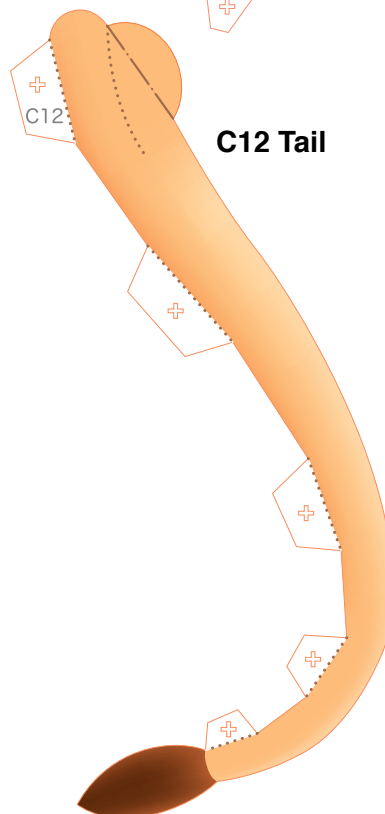
C9 Left hind leg



C10 Right hind leg



C11 Tail



C12 Tail