



- Fish Myliobatiformes order Myliobatidae family
- Length: Approx.300 to 500cm (approx. 9.8 to 16.4 feet)
- Weight: Approx.3t (approx. 6,000 lbs)
- Habitat: Tropical and subtropical waters

The manta ray is the world's largest species of ray. Larger manta rays can reach sizes of up to 8m across. Their bodies are colored black to grayish blue on the back and white on the belly, and they glide gracefully through the sea, propelling themselves by moving their large pectoral fins up and down. They inhabit tropical and subtropical oceans around the world, feeding on plankton as they swim close to the surface. They have a docile, curious temperament, making them popular with scuba divers.



Tools	Notation Key
Scissors	——— Scissors line
Paste, or woodwork glue	..... Mountain fold
Stencil pen, or bodkin	- - - - - Valley fold
Ruler	+ Glue spot
	A1, B1 Parts No.

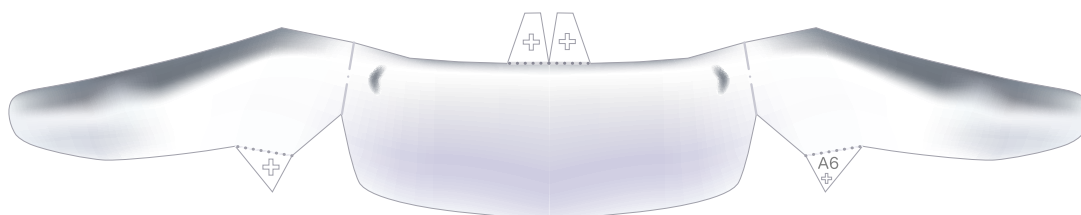
- ◆ The Pattern is divided into two blocks:  
A (body, fin, tail) and B (display stand, coral).  
Follow the instructions for each block to assemble your manta ray.

- <Caution>
- ※ Keep scissors and glue away from small children.
  - ※ Be careful not to cut your fingers when using scissors.



## Body parts

Refer to Assembly Instructions: Page1 / Page2.

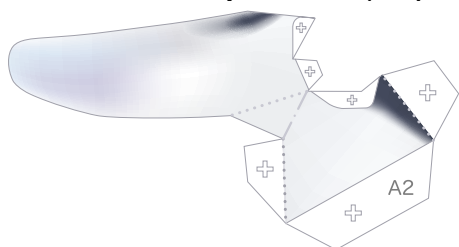


A6 Mouth

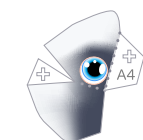
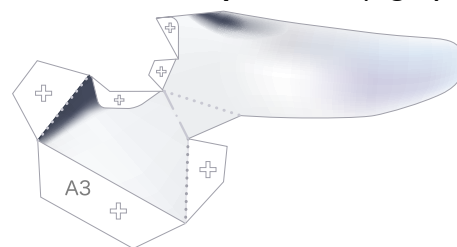


A7 Jaw

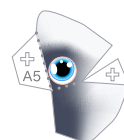
A2 Cephalic fin (left)



A3 Cephalic fin (right)

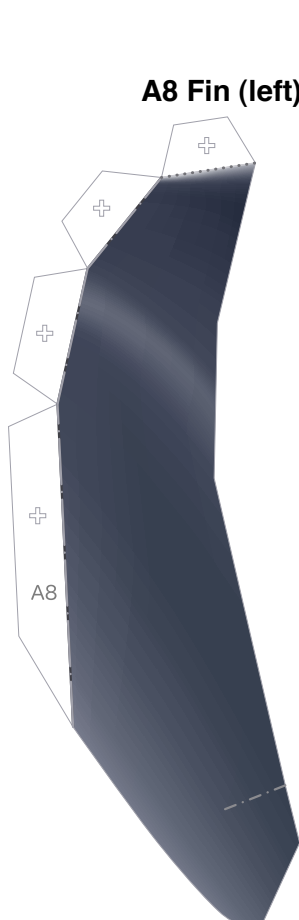


A4 Left eye

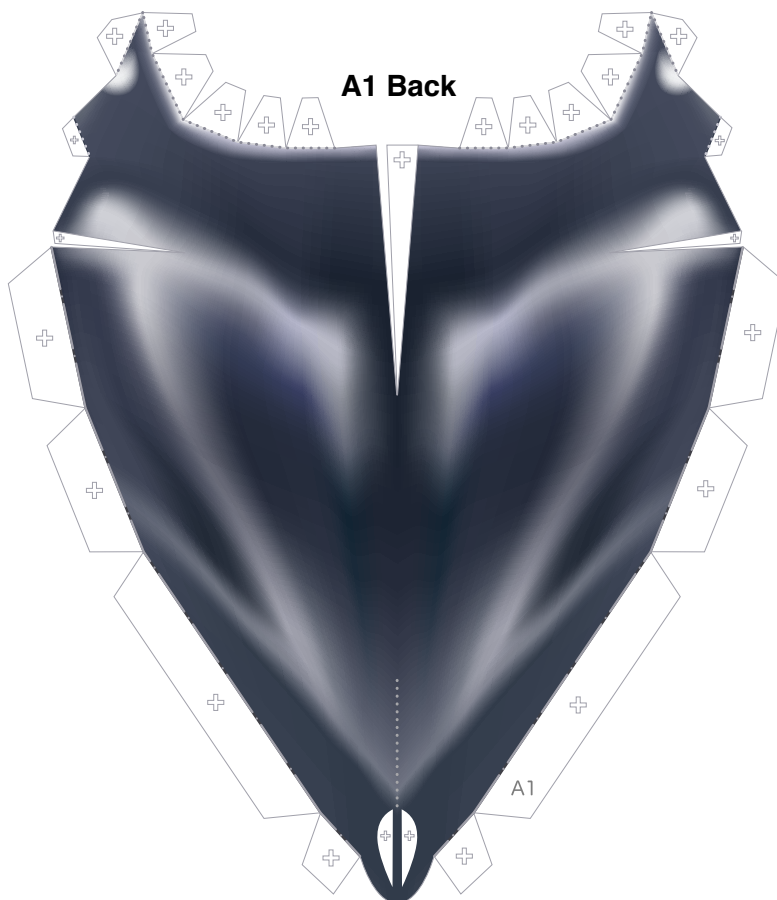


A5 Right eye

A8 Fin (left)



A1 Back



A9 Fin (right)

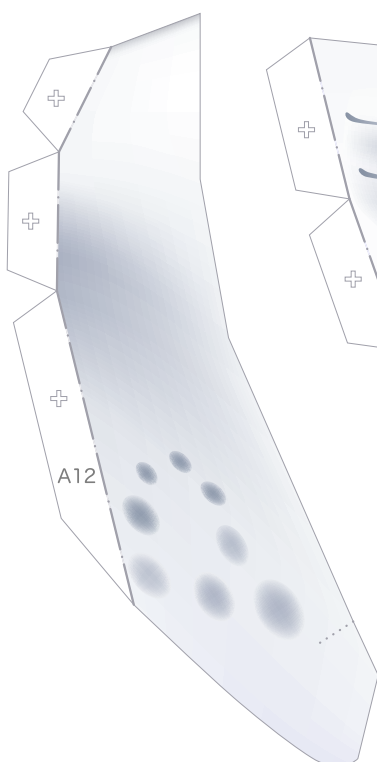




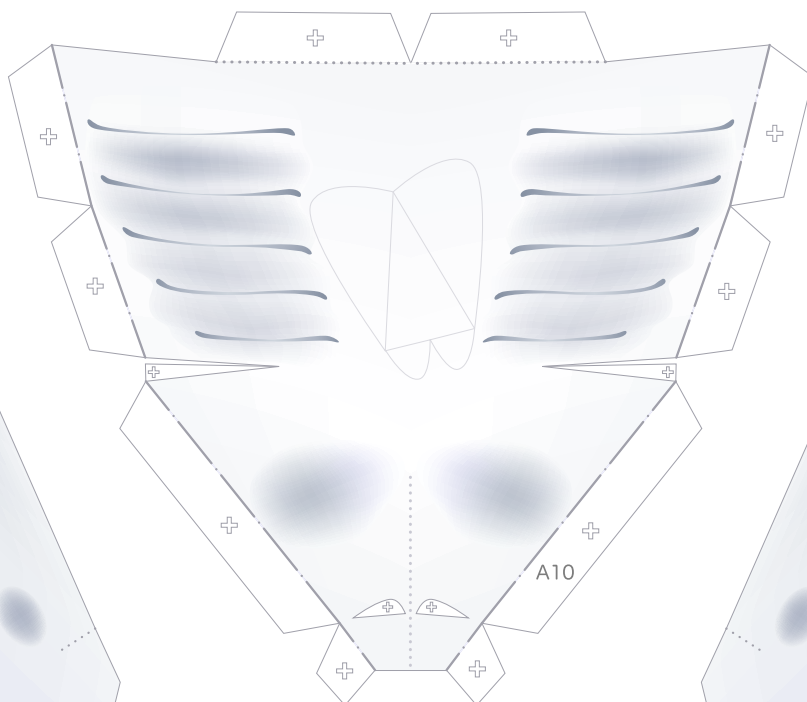
## Body parts

Refer to Assembly Instructions: Page2.

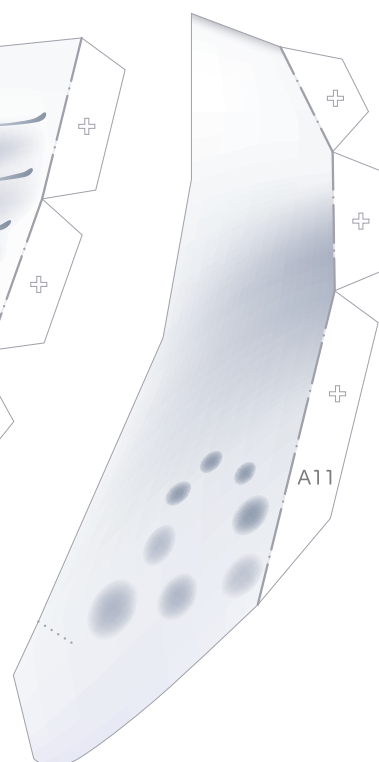
**A12 Fin (right)**



**A10 Belly**



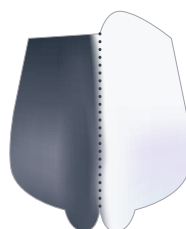
**A11 Fin (left)**



**A14 Tail fin (right)**



**A13 Tail fin (left)**

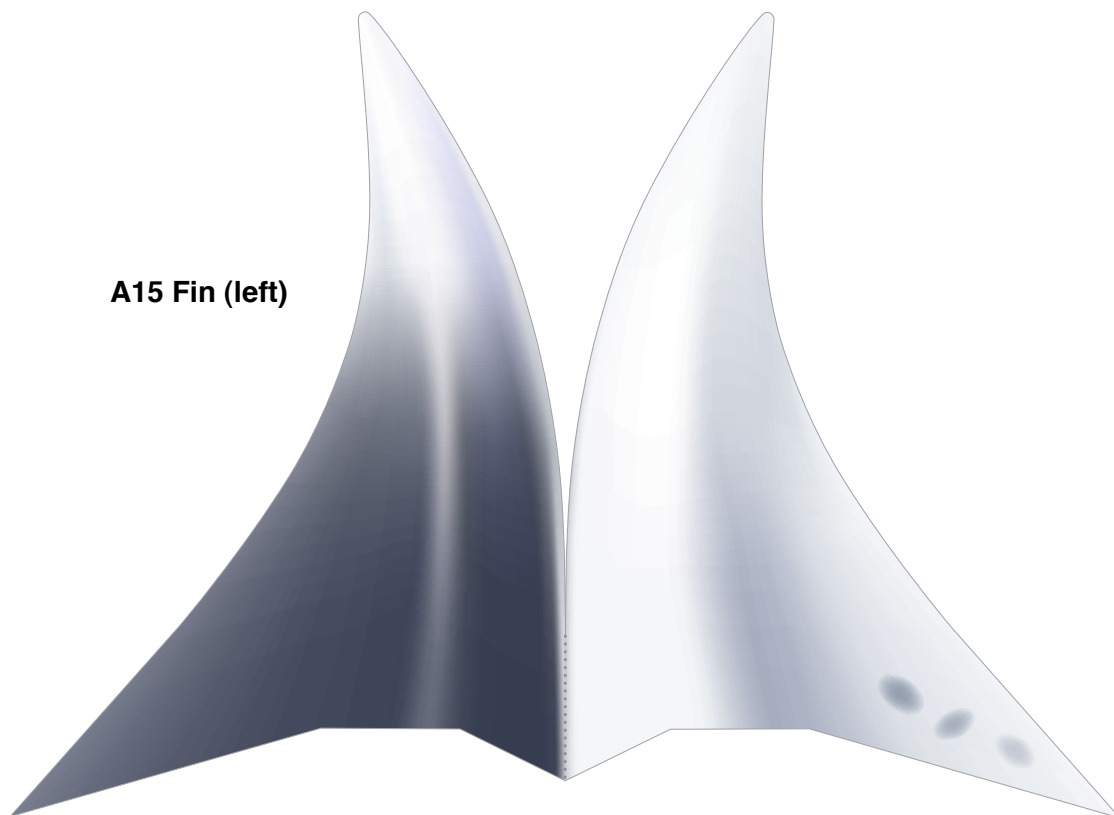




## Fin and tail parts

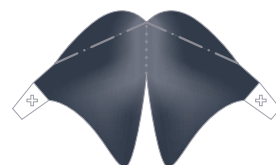
Refer to Assembly Instructions: Page2 / Page3.

**A15 Fin (left)**



**A16 Fin (right)**

**A17 Back fin**



**A18 Tail**

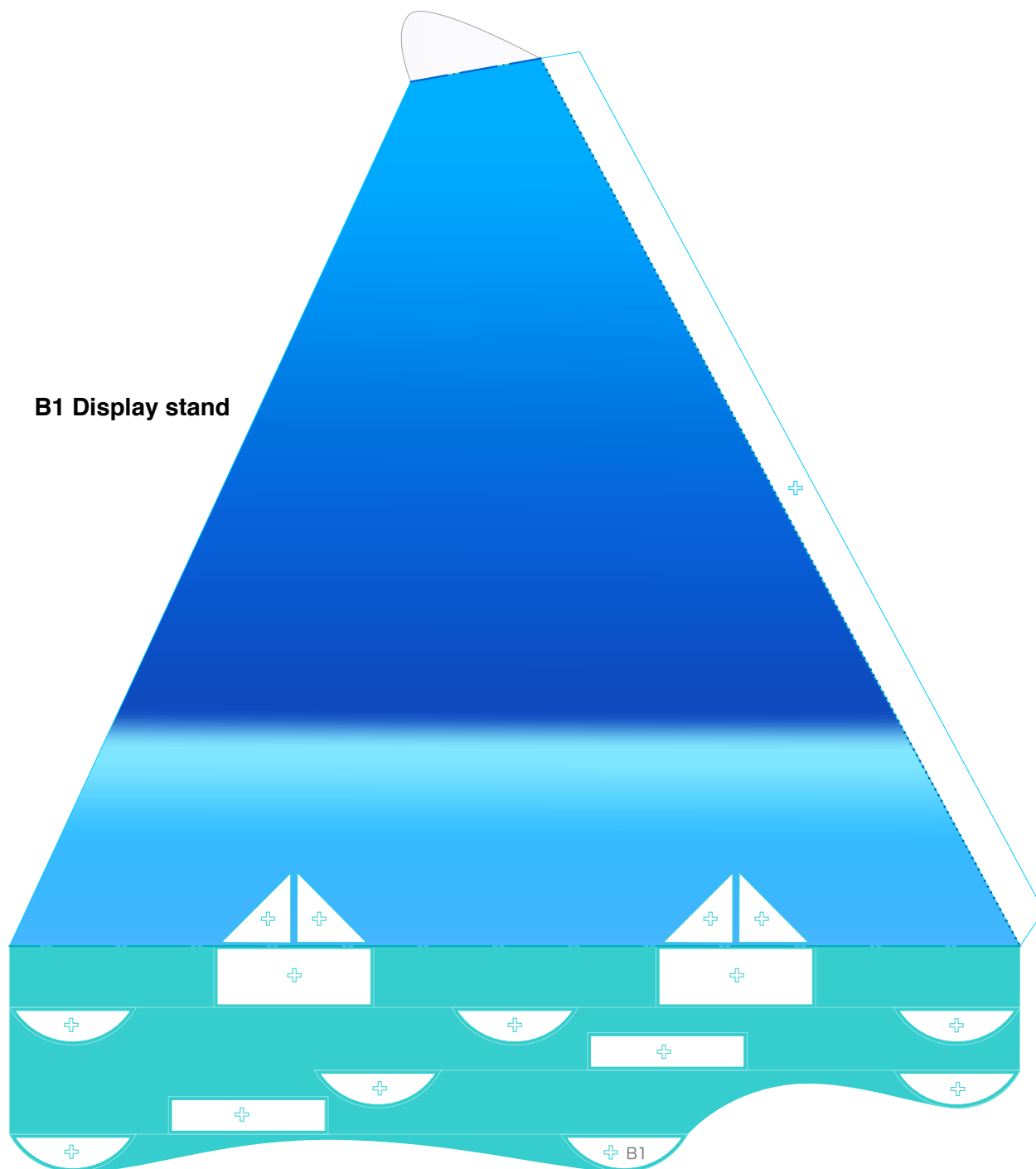




## Display stand parts

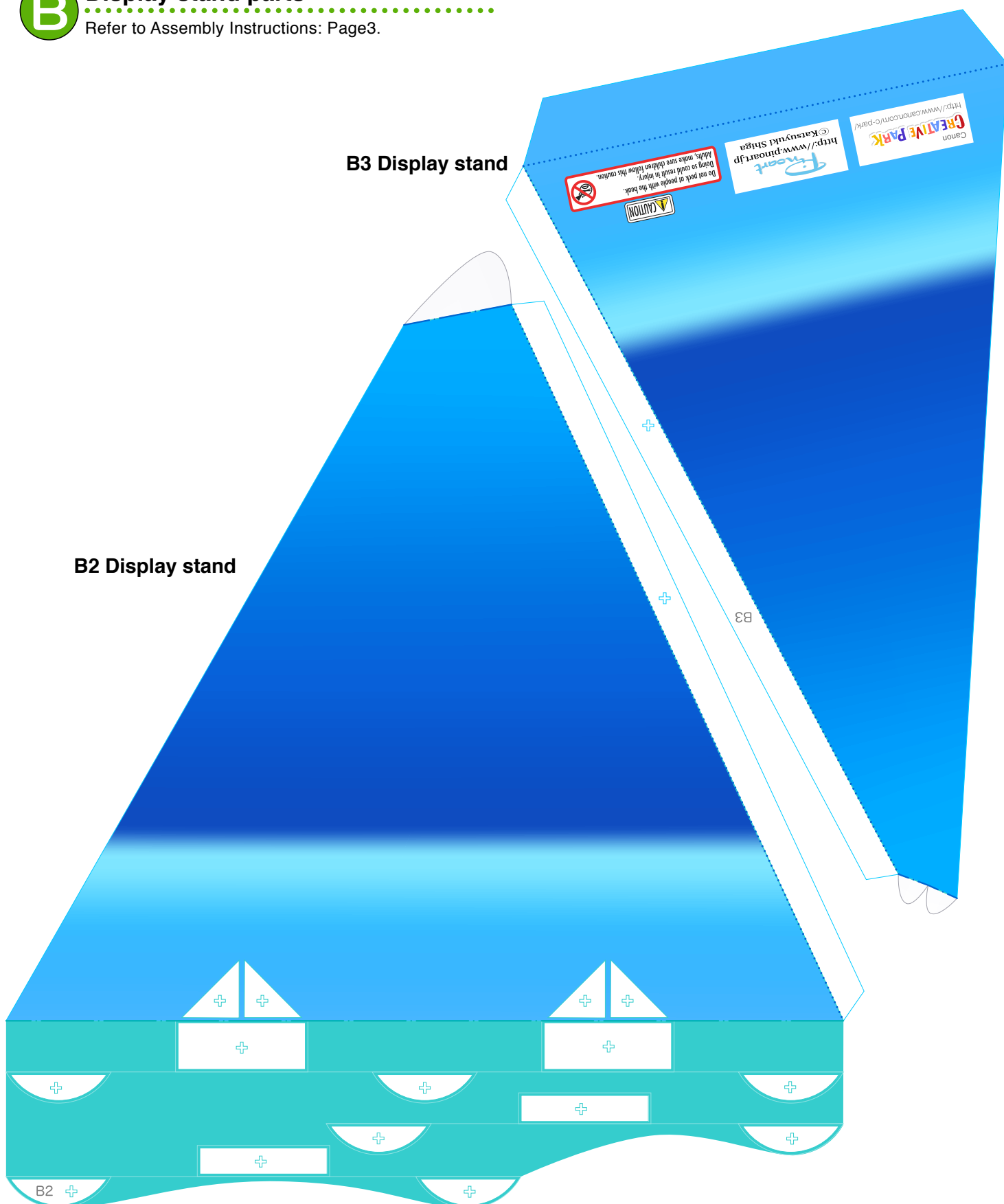
Refer to Assembly Instructions: Page3.

B1 Display stand



## B Display stand parts

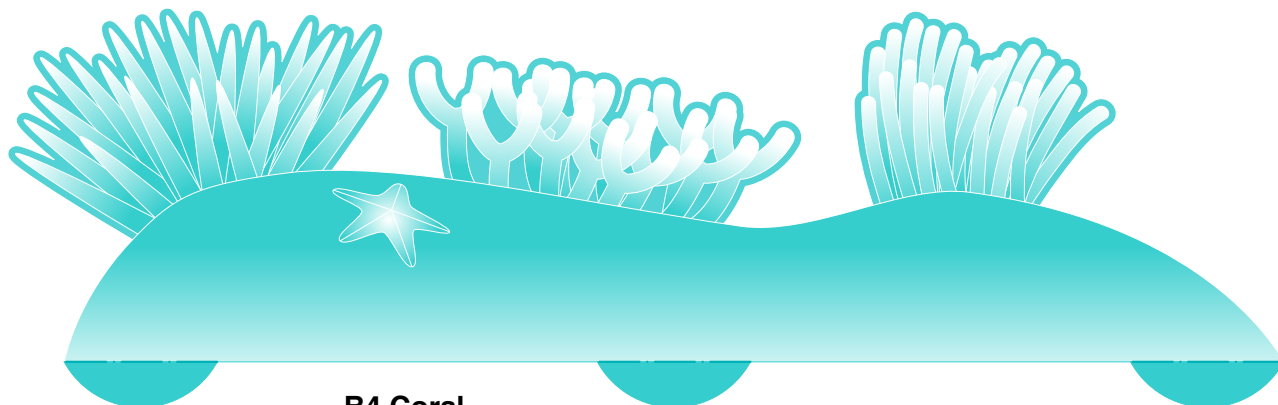
Refer to Assembly Instructions: Page3.



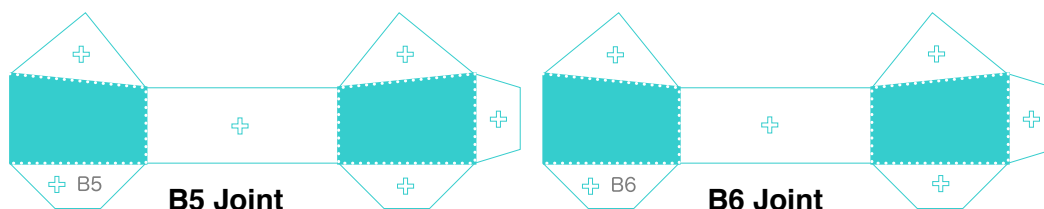


## Coral parts

Refer to Assembly Instructions: Page3.

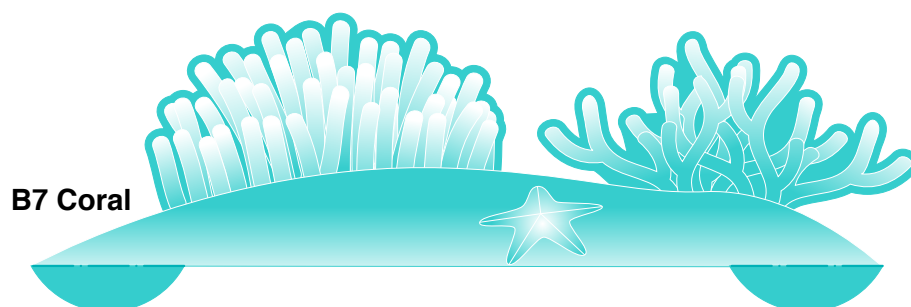


**B4 Coral**



**B5 Joint**

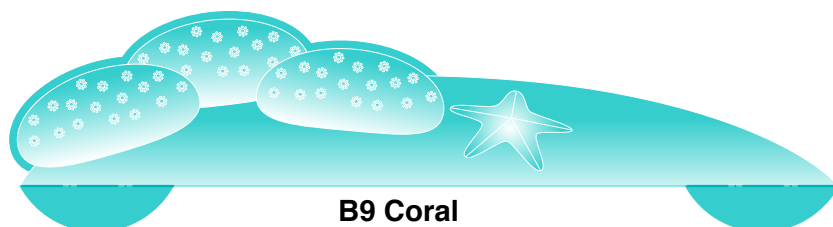
**B6 Joint**



**B7 Coral**



**B8 Joint**



**B9 Coral**



**B10 Joint**

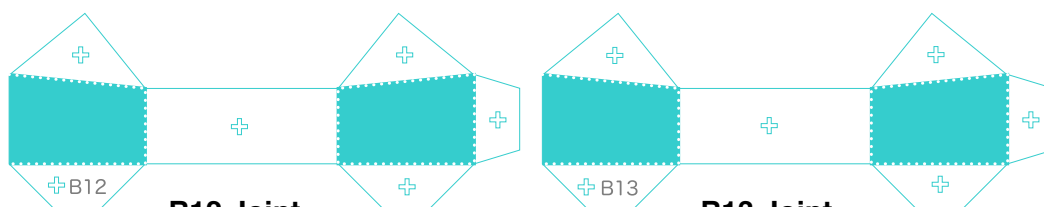


## Coral parts

Refer to Assembly Instructions: Page3.



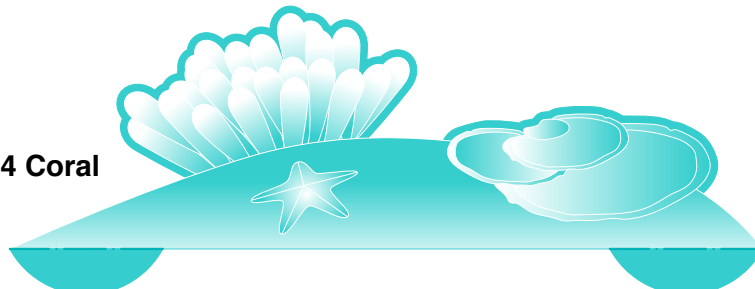
**B11 Coral**



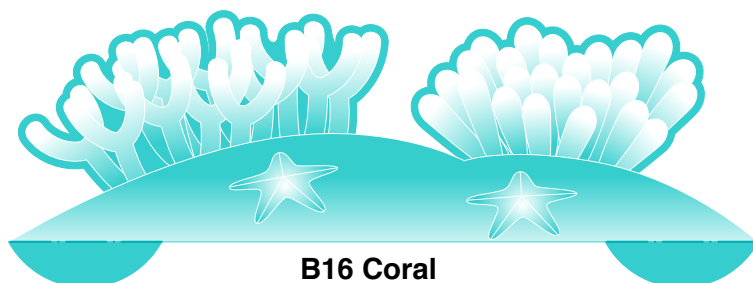
**B12 Joint**

**B13 Joint**

**B14 Coral**



**B15 Joint**



**B16 Coral**



**B17 Joint**